



GVU DATA SUMMIT

Power BI and Copilot for Report Authors

John Callahan

john.callahan@microsoft.com

SR Specialist - Data & AI | US Education

FEBRUARY 2025

GVU DIGITAL
TRANSFORMATION

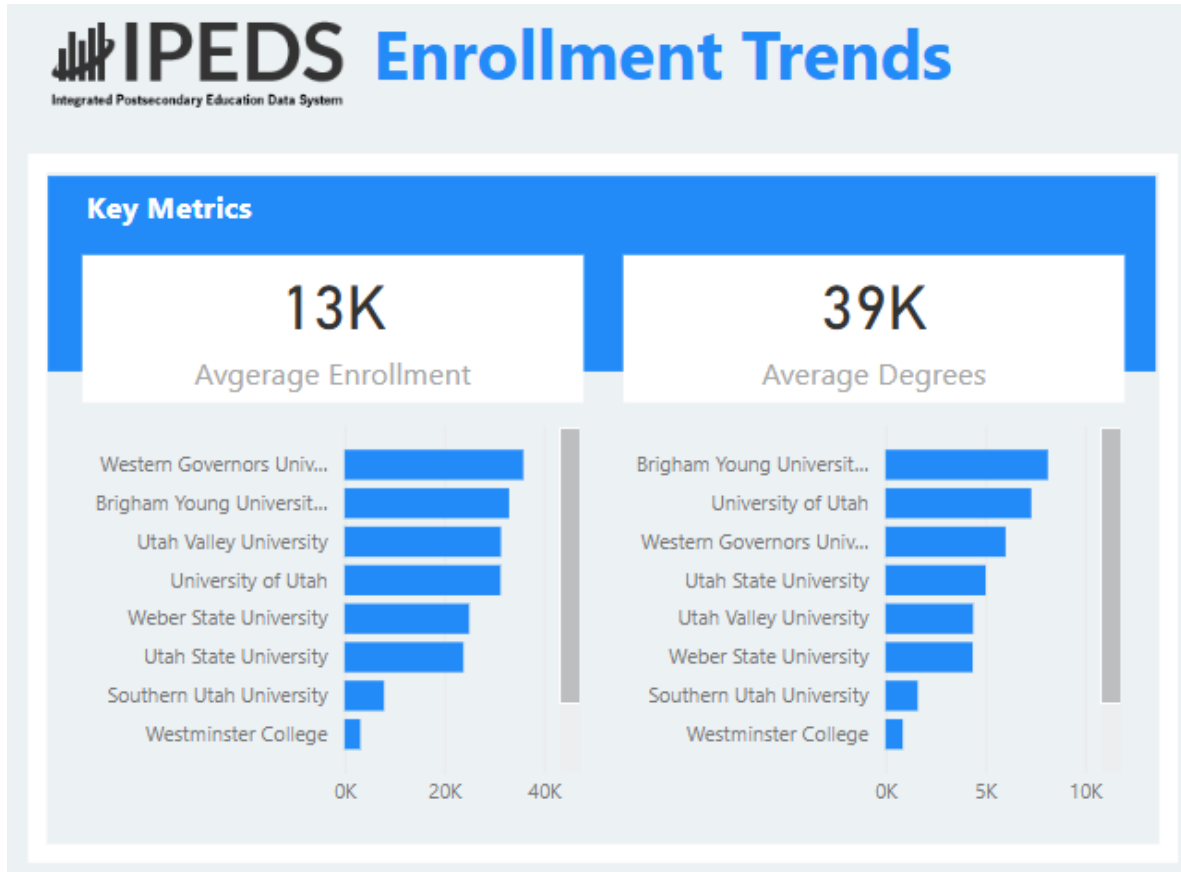
Agenda

- Overview of Copilot for Power BI
- Converse with your data (**hands-on**)
- Improve your semantic model to work well with Copilot
- Create new content using Copilot in Power BI Service (**hands-on**)
 - Power BI Desktop can also be configured to use Copilot to create new content)
- References and take away document

The background of the slide is a light green color with a pattern of semi-transparent squares in various shades of green and yellow, scattered across the top and bottom. A dark green horizontal bar is positioned in the middle, containing the title text.

Overview of Copilot for Power BI

Enhancing Reports with Copilot



- [Summarize the underlying semantic model](#)
- [Get help with report creation and content suggestions](#)
- [Generate narrative visuals that summarize reports](#)
- [Ask Copilot questions about the data in the semantic model](#)
- [Use Copilot to create measures](#)
- [Use Copilot to simplify DAX query writing](#)
- [Streamline documentation of your semantic model](#)

Converse with your data (hands-on)

Training Resources for this section:

[Summarize a report page in the Copilot pane - Power BI | Microsoft Learn](#)

[Create interactive reports using Copilot for Power BI - Training | Microsoft Learn](#)

Example questions (prompts)

The screenshot shows the Copilot interface with a chat window. The chat window contains the following text:

Welcome to the preview version of Copilot. Here's what's new:

- Ask a question about the underlying data in your report and get a visual answer.

[Get the latest on what's in preview](#)

Here are some things you can try:

- Give me an executive summary
- What insights should I look into?
- Answer a question about the data

Question: Which state had the biggest YOY enrollment change?

The response includes a bar chart titled "Enrollment Trends" showing enrollment from 2009 to 2014. The chart shows a significant increase in enrollment from 2009 to 2014, with a peak of 723K in 2014. A blue arrow points to the 2014 bar.

Enrollment Trends

From 2009 to 2014, overall enrollment in institutions from CO, ID, MT, NV, UT, and NM increased from 623.97K to 723.07K. Degrees awarded also rose from 121.67K in 2010 to 146.95K in 2014. The percentage of degrees earned by women remained higher than that earned by men, consistently above 54.92% [1].

The average enrollment by institution within these states shows Western Governors University leading with 35.88K students, followed by Brigham Young University-Provo with 33.01K [2]. In terms of average degrees awarded, Brigham Young University-Provo again tops the list with 8.14K, followed by the University of Colorado Boulder at 7.41K [3].

A table titled "AVERAGE DEGREES BY INSTITUTE NAME" is shown below the text. The table has 3 columns and 1 row visible. A blue arrow points to the first column header.

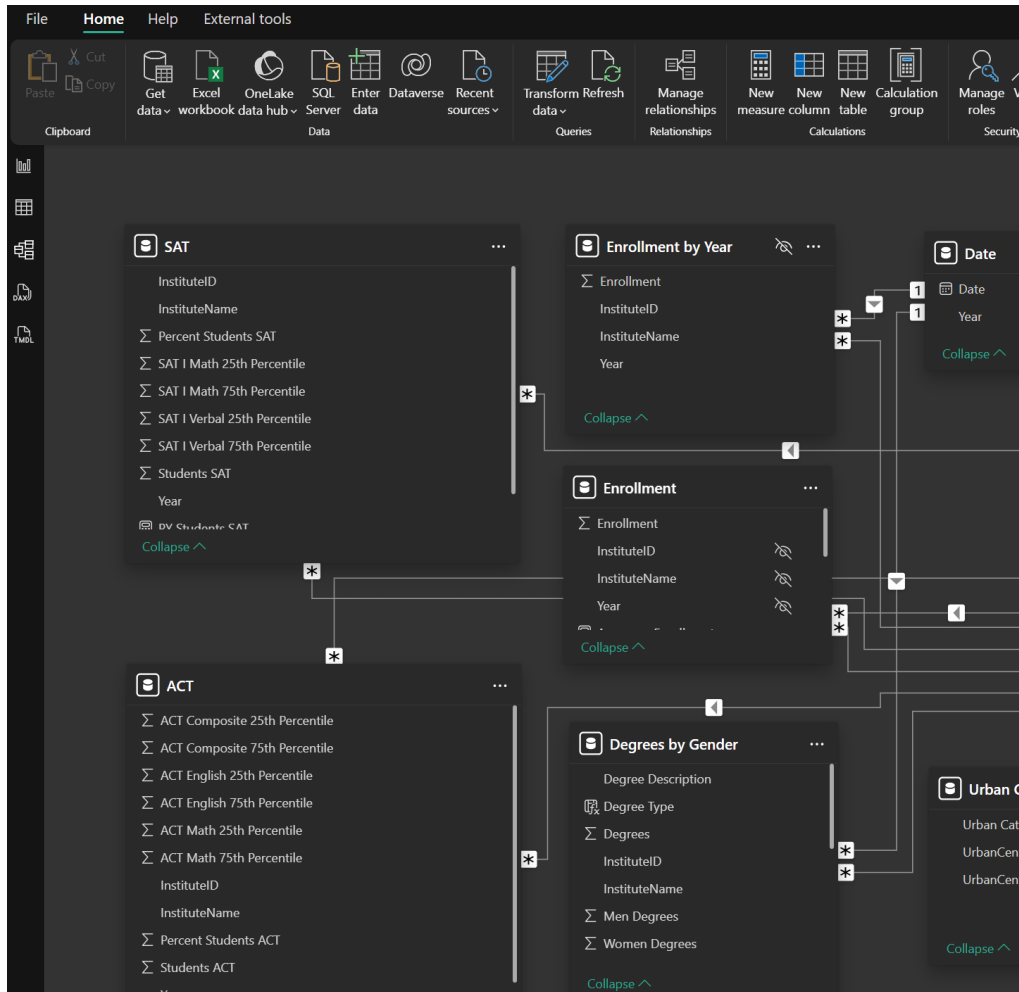
AVERAGE DEGREES BY INSTITUTE NAME
Enrollment Trends

- Click on the “Give me an executive summary” prompt
 - Review reference footnotes created that link to the visual used as the source for the response
- Click on the “What insights should I look into?” prompt
- Click on the “Answer a question about the data” prompt
 - Ad-hoc questions can benefit from predefined measures, such as year over year, available in your semantic model

The background of the slide is a light green color with a pattern of semi-transparent squares in various shades of green and yellow, scattered across the top and bottom. A dark green horizontal bar is positioned in the middle of the slide, containing the main title in white text.

Improve your semantic model for Copilot

Importance of Data Quality in Power BI Reports



- **Completeness:** Missing values can cause gaps.
- **Validity:** Out-of-range data values can skew visuals and results.
- **Consistency:** Inconsistent data can affect date-related visuals.
- **Uniqueness:** Duplicates can affect data accuracy.
- **Data Relationships:** Cross-table visuals might not be possible without relationships.
- **DAX Calculations:** Limited calculations can result in fewer possible insights. Period calculations, such as year over year, provide value when responding to ad-hoc prompts.

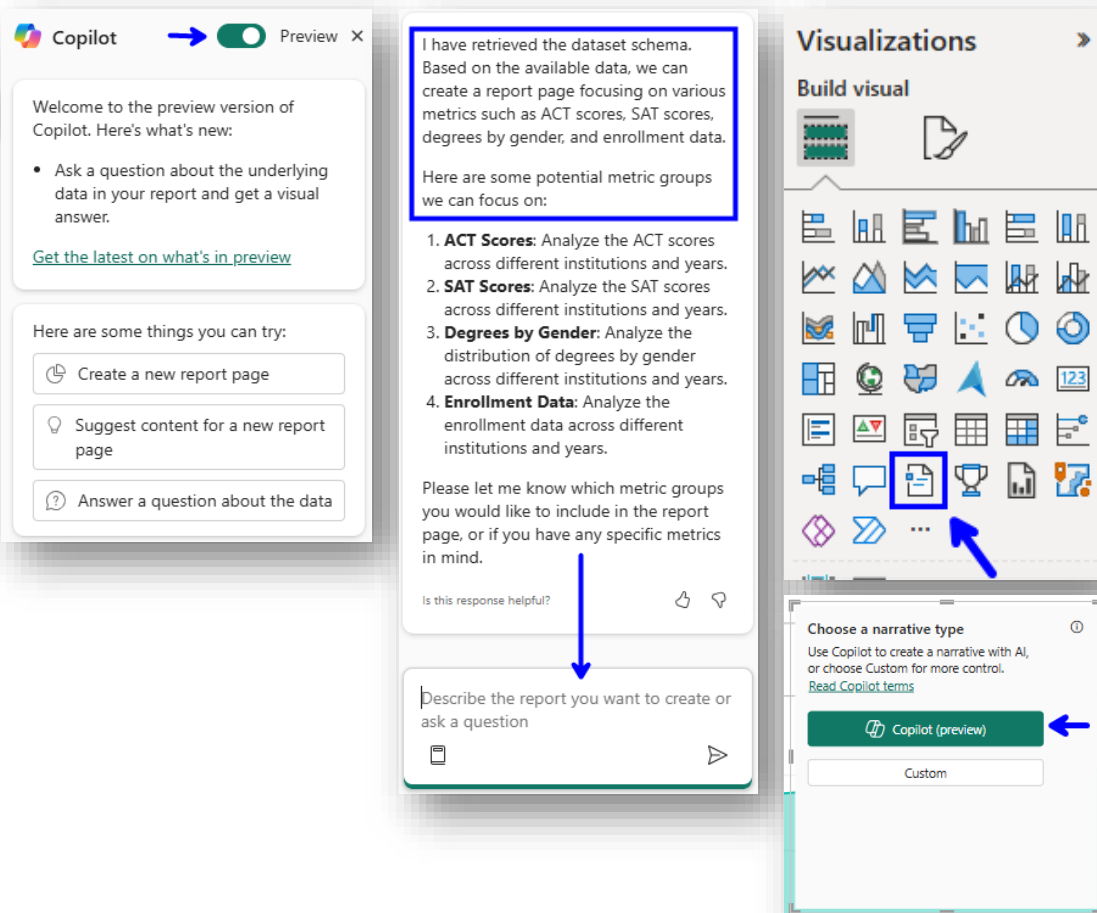
Create new content using Copilot (hands-on)

Training Resources for this section:

[Create interactive reports using Copilot for Power BI - Training | Microsoft Learn](#)

[Update your data model to work well with Copilot for Power BI - Power BI](#)

Example Prompts (use mode)



Copilot Preview X

Welcome to the preview version of Copilot. Here's what's new:

- Ask a question about the underlying data in your report and get a visual answer.

[Get the latest on what's in preview](#)

Here are some things you can try:

- Create a new report page
- Suggest content for a new report page
- Answer a question about the data

I have retrieved the dataset schema. Based on the available data, we can create a report page focusing on various metrics such as ACT scores, SAT scores, degrees by gender, and enrollment data.

Here are some potential metric groups we can focus on:

- ACT Scores:** Analyze the ACT scores across different institutions and years.
- SAT Scores:** Analyze the SAT scores across different institutions and years.
- Degrees by Gender:** Analyze the distribution of degrees by gender across different institutions and years.
- Enrollment Data:** Analyze the enrollment data across different institutions and years.

Please let me know which metric groups you would like to include in the report page, or if you have any specific metrics in mind.

Is this response helpful?

Describe the report you want to create or ask a question

Visualizations

Build visual

Choose a narrative type

Use Copilot to create a narrative with AI, or choose Custom for more control. [Read Copilot terms](#)

Copilot (preview)

Custom

- Click on the “Create a new report page” prompt
 - The responses will suggest potential focus areas and ask you to enter which to use in creating a new report page
 - Continue building the new report by entering a prompt to create a new slicer, “Add a slicer for _____”
- Click on the “Suggest content for a new report page” prompt
- Add a **Smart Narrative** visual using Copilot to the report
 - Filter the report page and then **Refresh** the Copilot enabled Smart Narrative

References and take away document

[Overview of Copilot in Fabric - Microsoft Fabric | Microsoft Learn](#)

[Overview of Copilot for Power BI - Power BI | Microsoft Learn](#)

[Update your data model to work well with Copilot for Power BI - Power BI | Microsoft Learn](#)

Training

[Create interactive reports using Copilot for Power BI - Training | Microsoft Learn](#)

SQL (Natural Language to SQL)

[Announcing SQL Server Management Studio \(SSMS\) 21 Preview 1 and Copilot in SSMS](#)

[Introducing Copilot for SQL database in Microsoft Fabric | Data Exposed](#)

YouTube

[Copilot for Power BI: Your Ultimate Copilot Guide](#)

Takeaway Document

Power BI and Copilot for Report Authors Training.docx