

SEARCH & FIND

OCTOBER – HAUNTED HISTORY

Tree – Page 1



1. Cthulhu.

Clue: Cthulhu is a character created by H.P. Lovecraft in a short story called *The Call of Cthulhu*. He is a cosmic entity worshiped by cults and other Lovecraftian monster. In the universe Lovecraft created, Cthulu is the source of all subconscious human anxiety.

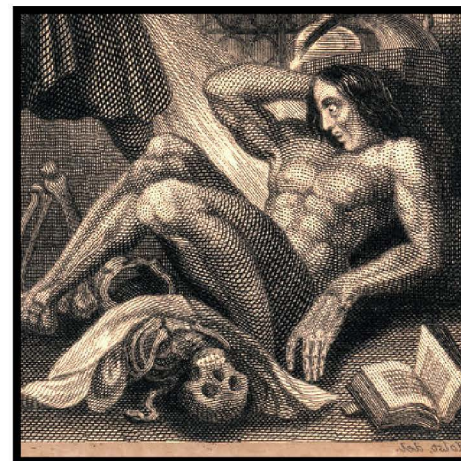
Image: By Joe Broers; Lovecraftzine; ©Joe Broers



2. Plague Doctor.

Clue: Recognized by their distinctive costumes, these doctors took on the task of treating patients with bubonic plague. The beaked masks, an invention attributed to King Louis XIII's chief physician Charles de Lorme during the seventeenth century, served as a protective mask.

Image: By Paulus Fürst; Wikimedia Commons; Public Domain



3. Modern Prometheus.

Clue: *The Modern Prometheus*, or *Frankenstein*, by Mary Shelley, was the first horror novel ever written. It chronicles the work of a young scientist to create life in an unorthodox and unnatural scientific experiment. This depiction is of the Creature, or Frankenstein's monster, by Theodor Von Holst.

Image: By Theodor Von Holst; Wikimedia; Public Domain



4. Vlad the Impaler's Signature.

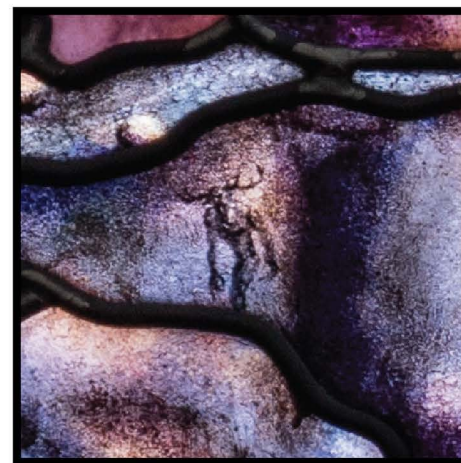
Clue: Vlad the Impaler, Vlad III or Vlad Dracula, was a brutal and important ruler of Wallachia, modern day Romaina, during the mid-1400s. He ordered and carried out many mass murders and provided the name and inspiration for Bram Stoker's *Dracula*.



5. Nosferatu.

Clue: The silent horror film *Nosferatu* (1922) is a cinematic work of German-Expressionism directed by F.W. Murnau and inspired by Bram Stoker's novel *Dracula*.

Image: By F.W. Murnau; Wikimedia Commons; Public Domain



6. Wendigo.

Clue: The Wendigo is a creature from the folklore and mythology of First Nations tribes from Canada and the Northeastern United States. It is a human-like monster that is said to possess individuals and inspires greed, murder, and cannibalism.



ROOTS OF KNOWLEDGE
UTAH VALLEY UNIVERSITY



SEARCH & FIND

OCTOBER – HAUNTED HISTORY

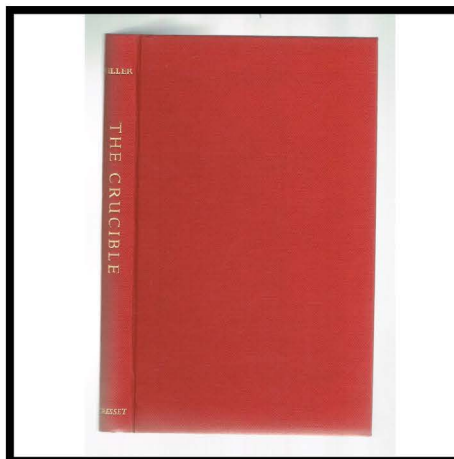
Tree – Page 2



7. Queen of the Night.

Clue: Die Zauberflöte (The Magic Flute) was written by Wolfgang Amadeus Mozart. This image shows the Queen of the Night, a powerful monarch who plays the role of a villain in the opera.

Image: By Karl Friedrich Schinkel; Met; Public Domain



8. The Crucible.

Clue: *The Crucible* is a partially fictitious 1953 play by Arthur Miller about the Salem Witch Trials that took place in Salem, Massachusetts during the late 17th century. Miller used the setting as an allegory for anti-communist sentiment and McCarthyism in the United States.

Image: By Arthur Miller; abebooks; ©Arthur Miller



9. Malleus Maleficarum.

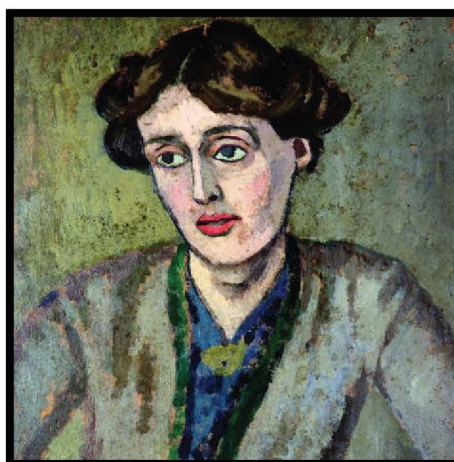
Clue: *Malleus Maleficarum*, translated to the *Hammer of Witches*, is a dissertation on the ways of identifying, hunting, trying, and ultimately punishing "witches," written by Heinrich Kramer in 1486.



10. Reynard the Fox.

Clue: Reynard is a trickster character, depicted as a fox living in a kingdom of anthropomorphic animals, who uses his cunning to exploit societal customs and other characters' flaws to serve his own self-interests.

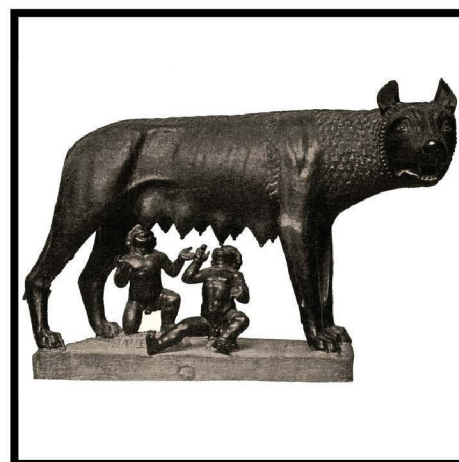
Image: By William Caxton; Northseacrossings; Public domain



11. Virginia Woolf.

Clue: Virginia Woolf published the short story *A Haunted House* in 1921 as a part of her eight-story anthology, *Monday or Tuesday*. What appears as a straightforward ghost story turns into a philosophical tale about life, love, and death.

Image: By Roger Fry; Wikimedia Commons; Public Domain



12. She-Wolf.

Clue: The She-Wolf is the adopted mother of the brothers Romulus and Remus, central characters in the mythology of the founding of Rome. Their story ends with betrayal as Romulus kills his twin brother Remus.

Image: By Unknown, Wikimedia Commons; Public Domain

