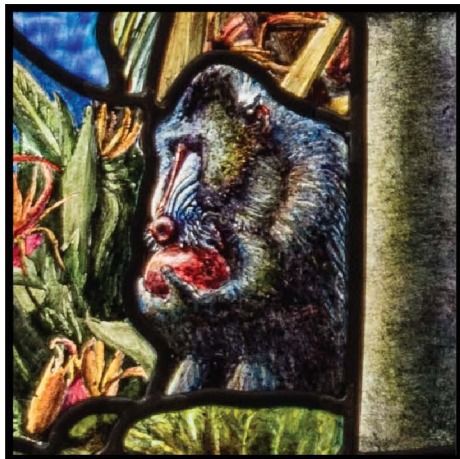


SEARCH & FIND

AUGUST – ANIMALS

Seed- Page 1



1. Mandrill.

Clue: Mandrill (*Mandrillus sphinx*) is the largest monkey in the world and is native to Cameroon, Gabon, and neighboring countries. It is distinctive for the bright coloring of its nose and backside.



2. Great Horned Owl.

Clue: A native of the western hemisphere, the Great Horned Owl (*Bubo virginianus*) is a large, highly-adaptable owl. Owls are traditionally associated with knowledge and wisdom in the West.

Image: By Peter K. Burian; Wikimedia Commons; CC BY 4.0



3. Prairie Dog.

Clue: Prairie dogs (genus *Cynomys*) are ground squirrels native to North America. There are five different species of prairie dogs in North America: black-tailed, white-tailed, Gunnison's, Utah, and Mexican prairie dogs.



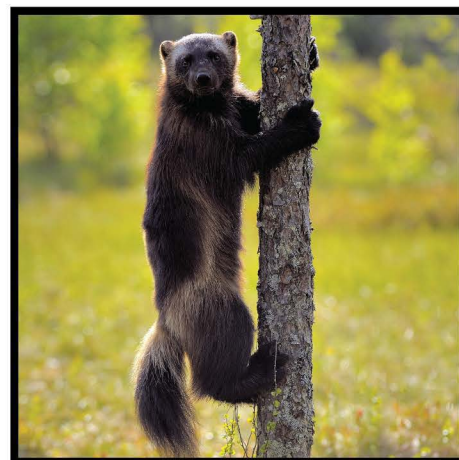
4. Wolf-Dog.

Clue: Jack London, the famous American author, is pictured here with a wolf-dog hybrid who is the main character in his novel, *White Fang*. The book is written from the point of view of White Fang, the wolf-dog, and follows his journey to domestication.



5. Elephant.

Clue: Elephants are the largest living land mammals in the world. There are three species of elephants recognized: the African bush elephant, the African forest elephant, and the Asian elephant.



6. Wolverine.

Clue: The wolverine (*Gulo Gulo*) is a large, land-dwelling carnivorous animal. Wolverines are normally found in remote areas away from human contact in northern Canada and the United States.

Image: By Vittorio Ricci; Sciencing; ©Vittorio Ricci



ROOTS OF KNOWLEDGE
UTAH VALLEY UNIVERSITY

UVU

SEARCH & FIND

AUGUST – ANIMALS

Seed – Page 2



7. Wild Turkey.

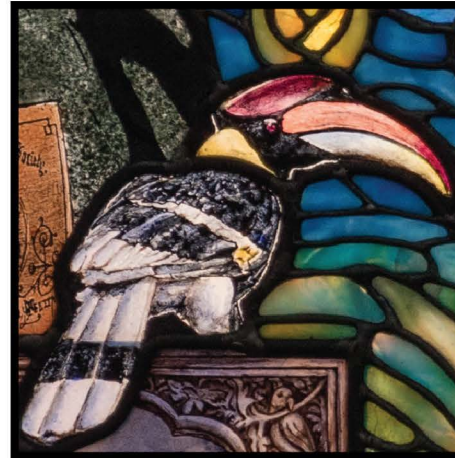
Clue: The wild turkey (*Meleagris gallopavo*) is a large bird native to North America. The turkey plays a special role in American culture, and Benjamin Franklin once suggested that it be the national bird.

Image: By Riki7; Wikimedia Commons; Public Domain



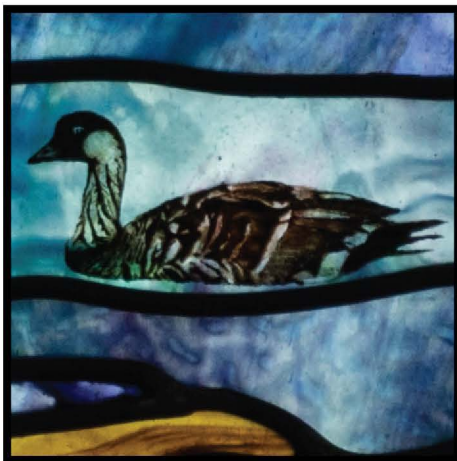
8. Oxen.

Clue: Oxen are large, bovine mammals often used for farming or transportation. Oxen were first domesticated by humans around 4000 B.C.



9. Great Hornbill.

Clue: The great hornbill is a bird native to central and southeast Asia. Their most distinctive features are their yellow and orange beaks and black casques (a hard helmet-like structure on a bird's head).



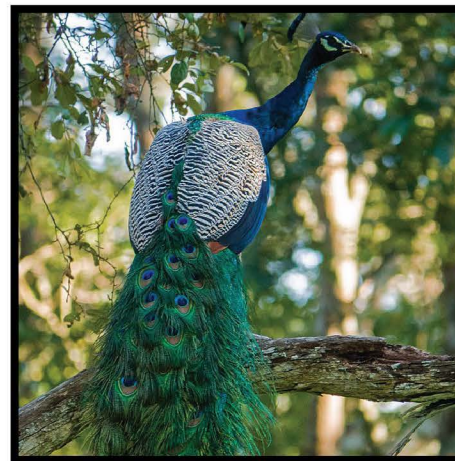
10. Nene.

Clue: The nene (*Branta sandvicensis* or *sandwicensis*) is a bird that is found exclusively on the Hawaiian Islands where it is the state bird. They are thought to have evolved from Canadian geese that arrived on the islands 500,000 years ago.



11. Japanese Macaque.

Clue: The highly intelligent Japanese macaque (*Macaca fuscata*) is native to all but the northernmost of the Japanese islands. Macaques are often portrayed as a mediator between deities and mortals in Eastern folklore.



12. Peacock.

Clue: Indian peacocks (*Pavo cristatus*) were originally native to South Asia, but they can now be found all over the world. It is the national bird of India.

Image: By Mike Prince; Wikimedia Commons; CC BY 2.0