

# SEARCH & FIND

AUGUST – ANIMALS

Sapling – Page 1



## 1. Camel Caravan.

*Clue:* Camel caravans have been used for centuries to support trade between nations. Camels are an ideal beast of burden for long-distance travel, especially across deserts, due to their evolutionary adaptations. They were domesticated by humans as early as 6,000 years ago.



## 2. Plague Rat.

*Clue:* Rats (genus *Rattus*) were often blamed for spreading diseases, such as the Plague of Justinian and the Black Death. The real culprits were the fleas (order Siphonaptera) that traveled with the rodents.

Image: By AnemoneProjectors; Wikimedia Commons; CC BY-SA 2.0



## 3. Scarlet Ibis.

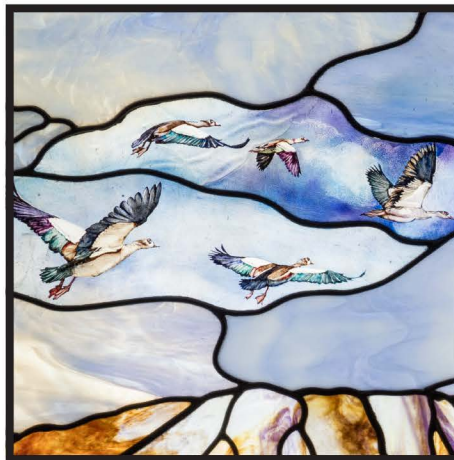
*Clue:* The scarlet ibis (*Eudocimus ruber*) is a wading bird native to South America and the Caribbean.

Image: By Sandy Cole; Wikimedia Commons; CC BY-SA 3.0



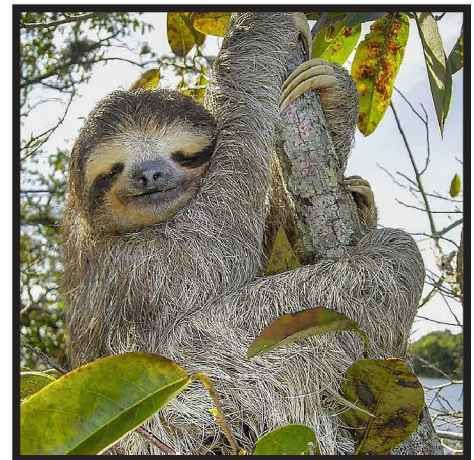
## 4. Canadian Geese.

*Clue:* The Canada goose (*Branta canadensis*) is native to North America, but its yearly migrations can extend to Europe and South America.



## 5. Egyptian Geese.

*Clue:* The Egyptian goose (*Alopochen aegyptiacus*) is a colorful species that was considered sacred by ancient Egyptians.



## 6. Three-toed Sloth.

*Clue:* The three-toed sloth (*Bradypus tridactylus*) lives in a limited portion of northern South America.

Image: By Stefan Laube; Wikimedia Commons; Public Domain

# SEARCH & FIND

## AUGUST ANIMALS

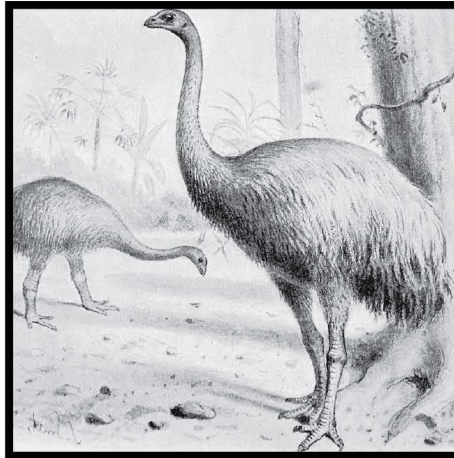
Sapling- Page 2



### 7. Red Kangaroo.

*Clue:* The red kangaroo (*Macropus rufus*) is the largest of its kind and is an iconic animal native to Australia.

Image: By Bidgee; Wikimedia Commons; CC BY 3.0



### 8. Giant Moa.

*Clue:* This extinct bird (genus *Dinornis*), one of the tallest ever, was unique to New Zealand.

Image: By Joseph Smit; Wikimedia Commons; Public Domain



### 9. Dove.

*Clue:* Doves (family *Columbidae*) are traditionally symbols of peace in Western culture.



### 10. Anansi the Spider.

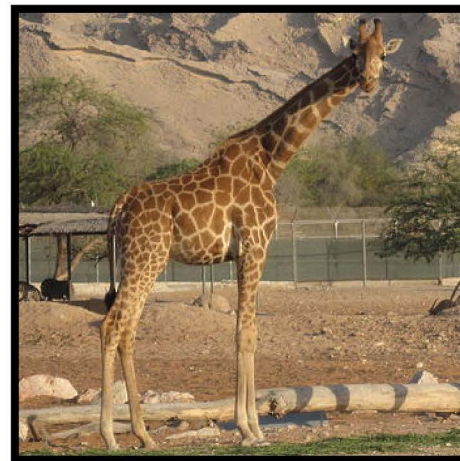
*Clue:* Anansi the Spider is a trickster character from West African folklore. The first Anansi stories were told by the Ashanti people of Ghana, but they are now told throughout West Africa and the Caribbean.



### 11. Zebra.

*Clue:* Zebras are African equine (horse like) mammals known for their black and white stripes. Lord Rothschild, a British politician, was photographed with zebras pulling carts and carriages to Buckingham Palace to prove to zoologists that the wild horse could be tamed.

Image: By Unknown; The Vintage News; Public Domain



### 12. Nubian Giraffe.

*Clue:* The Nubian giraffe (*Giraffa camelopardalis camelopardalis*) is an endangered species, native to the drier regions of Sub-Saharan Africa.

Image: By Doug Belshaw; Wikimedia Commons; CC BY 2.0



ROOTS OF KNOWLEDGE  
UTAH VALLEY UNIVERSITY

UVU