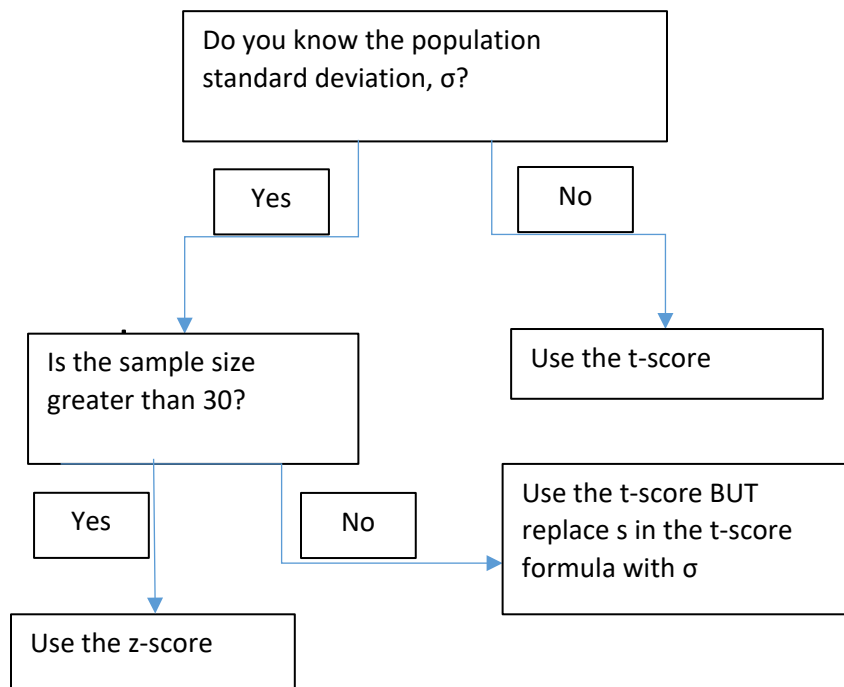


T-score vs Z-score:

Definitions and Symbols			
Population		Sample	
Population	The entirety of the group	Sample	A section of the population
Parameter	A number that describes the entire population	Statistic	A number that describes the sample
μ	Population mean	\bar{x}	Sample mean
N	Population size	n	Sample size
σ (sigma)	Population standard deviation	s	Sample standard deviation
	$\sqrt{\frac{\sum (x_i - \mu)^2}{n}}$		$\sqrt{\frac{\sum (x_i - \bar{x})^2}{n - 1}}$



Z - Score	T - Score
$z = \frac{x - \mu}{\frac{\sigma}{\sqrt{n}}}$	$t = \frac{x - \bar{x}}{\frac{s}{\sqrt{n}}}$