

UVU focuses on student success, engaged learning, rigorous academic programs and faculty-mentored research. It is transforming higher education by making it more affordable and accessible to students of all backgrounds.

Total students: 39,000+ (the largest college in Utah)
Origin: from all 50 states and 74 countries
Male: 53%
Female: 47%
Faculty: 1,500+ (22:1 student to faculty ratio)
Athletics: NCAA Division I

Located at the base of the Wasatch Mountains, many students choose UVU for its ideal location as well as superb academics.



uvu.edu/engineering



UTAH VALLEY UNIVERSITY

800 W. University Parkway

Orem, UT 84058

(801) 863-8373

engineering@uvu.edu

uvu.edu/engineering



Utah Valley University does not discriminate on the basis of race, color, religion, national origin, sex, sexual orientation, gender identity, gender expression, age (40 and over), disability, veteran status, pregnancy, childbirth, or pregnancy-related conditions, citizenship, genetic information, or other basis protected by applicable law in employment, treatment, admission, access to educational programs and activities, or other University benefits or services. The following office has been designated to handle inquiries regarding non-discrimination: EOAA/Title IX – 801-863-5704 – 800 W University Pkwy, Orem, 84058, Suite BA 203.

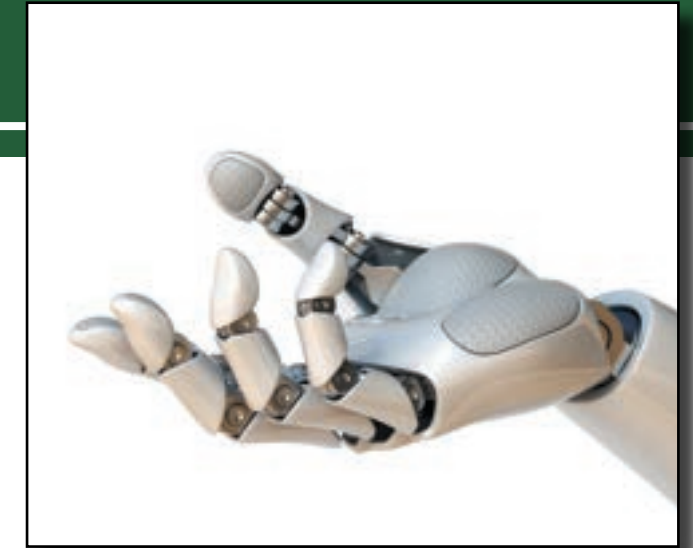
Mechanical Engineering

One of UVU's newest 4-year Engineering Degrees



UTAH VALLEY UNIVERSITY

uvu.edu/engineering



The Mechanical Engineering (ME) Program at UVU is an engaging and challenging major that prepares students for exciting careers and graduate programs in Mechanical Engineering.

Students begin their study by completing a series of foundation courses in Math, Science, Writing and Engineering. After successful completion of these foundation courses, students will apply and be accepted to the Mechanical Engineering Program before enrolling in upper division (3000 level or higher) major courses.

Applications for admission to the Mechanical Engineering program are accepted until two weeks prior to the start of a new semester. However, we encourage you to apply as early as possible.



Mechanical engineering, which has evolved over the years as new technologies have emerged, is one of the broadest engineering disciplines.

The Bachelor of Science in Mechanical Engineering (BSME) prepares graduates to apply mathematical and scientific principles to the design, development, testing, and manufacturing of machines, robots, tools, biomedical devices, power generating equipment such as steam and gas turbines, wind turbines, solar systems, internal combustion engines, and heating, cooling, and refrigeration equipment.

The BSME provides combined classroom and laboratory components and will prepare students to work for local, state, and federal governments; biomedical and aerospace fields; manufacturing sectors; consulting firms; transportation industry; and high tech and energy sectors. The program will also prepare students for further studies at the graduate level should they decide to do so.

uvu.edu/engineering



uvu.edu/engineering



Mechanical Engineering



For the latest information about the Mechanical Engineering program at UVU, please visit our website at: uvu.edu/engineering.

We also welcome personal visits. Please call to arrange a tour of our campus and facilities. We look forward to seeing you!

