

PREFACE

*This **FACT BOOK** is an annual publication of Utah Valley State College and the Office of Institutional Research and Strategic Planning. The purpose of the **FACT BOOK** is to translate accumulated data into useful information to those within and outside our college environment.*

*Every effort has been made to include within this publication the data most often requested. A decision had to be made early in the development of the **FACT BOOK** to limit the published data. We invite the users of this book to freely comment on what data they would like to have included in the future. Please contact our office, (801) 222-8000 ext. 8365, with your comments.*

The Office of Institutional Research and Strategic Planning wishes to thank the individuals or departments who have contributed to this publication.



Nancy M. Smith, Ph.D.
Executive Director
Office of Institutional Research
and Strategic Planning

UTAH VALLEY STATE COLLEGE
FACT BOOK
1992-93 DATA
TABLE OF CONTENTS

GENERAL INFORMATION	1
ADMINISTRATION	21
FACULTY	32
ENROLLMENT	41
STUDENT PROFILE	57
SUPPORT ORGANIZATIONS	73
FINANCE	93
FACILITIES	105
RESEARCH	111
INDEX/GLOSSARY	166

CONTENTS

GENERAL INFORMATION

Institutional Mission	1
History of Utah Valley State College	2
College Calendar, 1993 Fall Semester	7
College Calendar, 1994 Spring Semester	8
College Calendar, 1994 Summer Term	9
College Presidents	10
College Name Changes	10
Utah State Board of Regents	11
Utah State Board of Regent Chairs	12
Utah Commissioners of Higher Education	12
Utah State Board for Vocational Education Chairs	13
Utah System of Higher Education	14
Tuition and Student Fees, Fall 1989, 1990, 1991, 1992, 1993	15
Student Body Presidents	16
Teacher of the Year	19
Employee of the Year	19
Athletics, Final Records and Conference Finishes	20

INSTITUTIONAL MISSION

Utah Valley State College is a state college comprised of two interdependent divisions. The lower division embraces and preserves the philosophy and mission of a comprehensive community college, while the upper division consists of selected programs leading to baccalaureate degrees in areas of high community demand and interest.

Utah Valley State College is dedicated to providing a broad range of quality academic, vocational, technical, cultural, and social opportunities and experiences designed to encourage and assist students in attaining their goals and realizing their talents and potential, personally and professionally. The College is committed to meeting student and community lower division and selected upper division needs for occupational training; providing developmental, general, and transfer education; meeting the needs for continuing education for personal enrichment and career enhancement; and providing diverse social, cultural, and international opportunities, and student support services.

HISTORY OF UTAH VALLEY STATE COLLEGE

Utah Valley State College, Orem, is situated in the heart of Utah County. Nestled beneath mountains on all sides, the name Utah Valley has become synonymous with Utah County and is used interchangeably throughout the state. With a population of more than 263,000 it is the second largest county in the State and includes twenty incorporated cities. The College serves primarily the Mountainlands District of students with Utah County residents comprising 61 percent of it's enrollment.

*The College was established when the Utah State Legislature passed an appropriation of \$100,000 for the biennium of 1936-38 for vocational education. Central Utah residents who had been supported by government funding, wanted to upgrade their skills in order to obtain better jobs and many enrolled in vocational classes administered by the school districts. However, the school districts were not able to give adequate supervision to organize, conduct, coordinate, and supervise adult programs, and in the spring of 1938, **Hyrum E. Johnson** of Provo was appointed supervisor of vocational education for Utah and Heber Valleys.*

*In the fall of 1941 the scattered classes throughout the two valleys were moved to a central location in south Provo and the Fairgrounds Campus was enthusiastically welcomed by the staff and students. Provo School District assumed the financial supervision of the new school and both federal and state monies flowed through the District to the school. It became imperative that the school have proper identification and the name **Central Utah Vocational School** was selected. With the advent of World War II, most of the school's operating budget came from federal government funds for war production training.*

The birth of the school as a state institution was March 15, 1945, when Governor Herbert B. Maw signed a bill appropriating \$50,000 to operate for the biennium of 1945-47. A second bill was introduced and adopted in 1947 making the school a permanent state institution without any cut-off date. In 1946 Wilson W. Sorensen was appointed director of the school by the Utah State Board for Vocational Education and was the chief executive officer until June 1982.

In 1948 a new site, located between 1200 and 1400 North on 150 East in Provo, was obtained. The site was purchased by the four school districts (Alpine, Nebo, Provo and Wasatch) as well as Provo City and Utah County, with the understanding, if the property were given to the school, the state would appropriate the money for buildings. The location of the campus was considered ideal because of accessibility to students from Provo High School, the Vocational School, or Brigham Young University.

*In March 1953 the name of the school was changed from Central Utah Vocational School to **Utah Trade Technical Institute**. In March 1967 the name was again changed, this time to **Utah Technical College at Provo**. In February 1966 the Utah State Board for Vocational Education approved granting Associate of Applied Science Degrees and on July 14, 1967, the State Board approved offering general education courses. In August of 1971 the Associate of Science Degree was approved.*

Enrollment growth became so immense the Provo Campus was no longer adequate and a search for a new site was begun. Several locations in Provo and Orem were reviewed and a decision was made to purchase 185 acres in southwest Orem. This location was chosen because of its landscape, excellent traffic flow, and accessibility. The business education building, student center, heating plant, and auto trades building were occupied at the beginning of the 1976-77 school year.

In 1974 the Associate of Science Degree was discontinued, but approval was given by the Board of Regents to again award the degree in December 1980. In 1981 the Legislature approved granting an Associate of Science Degree in general education on a three-year probationary basis with permanent approval in 1985.

*On June 1, 1982, Wilson W. Sorensen retired as President and **Dr. J. Marvin Higbee** was selected by the Board of Regents as the new President.*

Since the move to the Orem Campus the College continued to grow with a trades building, learning resource center, athletic center and administration building added. As classes and service facilities were moved from Provo to Orem the vacated areas were filled by new programs, thus maintaining a split campus. A new science building was occupied in fall 1989. An extensive addition to the Learning Resource building was completed for use in 1992.

Beginning fall quarter 1985 articulation was completed with Weber State College to offer a four-year bachelor's degree in electronic technology while students continue their advanced courses on this campus. In winter quarter 1987 the same opportunity was offered students in the computer information systems program.

*In 1987 the legislature approved a name change better reflecting the location and mission of the College--**Utah Valley Community College**.*

*In October 1987 Dr. J. Marvin Higbee resigned as President and **Dr. Lucille T. Stoddard** was appointed Acting President until a new chief executive officer was selected.*

Dr. Kerry D. Romesburg was appointed President of Utah Valley Community College on July 17, 1988.

The Associate of Arts Degree was approved by the Board of Regents in 1987 and in 1989 the Regents and State Legislature approved funding for the Associate Degree Nursing program.

October 21, 1988, the College was granted permission by the State Board of Regents to convert from the quarter to the semester calendar system. This change became effective fall semester 1990.

A four-year accounting program became available to students beginning fall semester 1990.

In 1989 the College added an International Studies Center to coordinate exchange programs, bring international students on campus, and assist in giving faculty exchange opportunities. During this same period Utah Valley Community College became one of the first community colleges in the United States to sign an exchange agreement with Soviet Russia. Exchange agreements were reached with Central America and Caribbean countries, China, Hong Kong, Japan, Taiwan and Germany.

*August 1, 1991, Dr. Sharon Staples was appointed Director of the new **University Center** and assumed responsibility for bachelor's degree programs in accounting, computer science information systems, criminal justice, early childhood/elementary education and electronic engineering technology. These programs are offered on the UVCC campus and degrees are awarded through Utah State and Weber State Universities.*

January 17, 1992, the Utah State Board of Regents directed Utah Valley Community College and the Commissioner of Higher Education to develop a proposed model or plan for offering a limited number of high demand bachelor's degree programs directed to the needs of the region. The Regents' action directed that the model include the following: full data on costs with a 5-year projection, enrollment projections, program offerings, deployment of faculty, quality safeguards, accreditation processes, library and other requirements. Underscoring all of the process was the Regents' expressed concern for the undiminished continuation of UVCC's present lower division academic and technical programs.

*A five-year, renewable consortium agreement was established between **Utah Valley Community College** and the **Kiev College of Hotel Management**. The program began in September, 1992 in Kiev, Ukraine.*

*On July 1, 1993 the name of the College was changed by the Board of Regents to **Utah Valley State College** and UVSC was given provisional accreditation by Northwest Accrediting Association to offer four year degree programs. The mission of the college was expanded to include four year degree programs. At the same time, UVSC became the first U.S. institution to receive accreditation for programs offered in the former Soviet Union.*

Sources: [A Miracle in Utah Valley--The Story of Utah Technical College 1941-1982](#) by Wilson W. Sorensen
Utah Valley State College--Office of Vice President for Academic Affairs
Utah Valley State College--Office of the President

COLLEGE CALENDAR 1993 FALL SEMESTER

Early Registration Payment Deadline	August 11
Instruction Begins	August 25
Labor Day Holiday	September 6
Student Fall Break	October 25
Thanksgiving Holiday	November 24, 25, 26
Last Day of Classes	December 10
Final Examinations	December 13, 14, 15, 16
Fall Semester Ends	December 16

COLLEGE CALENDAR 1994 SPRING SEMESTER

Instruction Begins	January 5
Human Rights Day Holiday	January 17
President's Day Holiday	February 21
Spring Break	March 18
Good Friday Holiday	April 1
Community College Conference (no classes)	April 8
Last Day of Classes	April 22
Final Examinations	April 25, 26, 27, 28
Commencement	April 29

COLLEGE CALENDAR
1994 SUMMER TERM
(tentative schedule)

Instruction Begins	June 6
Independence Day Holiday	July 4
First Block Ends	July 8
Second Block Begins	July 11
Pioneer Day Holiday	July 25
Last Day of Classes	August 11
Final Examinations	August 12

COLLEGE PRESIDENTS

Mr. Wilson W. Sorensen	1946-1982
Dr. J. Marvin Higbee	1982-1988
Dr. Kerry D. Romesburg	1988-present

COLLEGE NAME CHANGES

1941	Central Utah Vocational School
1963	Utah Trade Technical Institute
1967	Utah Technical College at Provo
1987	Utah Valley Community College
1993	Utah Valley State College

UTAH STATE BOARD OF REGENTS

<u>Name</u>	<u>Term*</u>
Kenneth G. Anderton	1995
Pamela J. Atkinson	1997
Aileen H. Clyde	1995
Ian M. Cumming	1999
Mark D. Fisher	1994
Douglas S. Foxley	1997
John B. Goddard	1997
Larzette G. Hale	1999
L. Brent Hoggan	1997
Karen H. Huntsman	1995
Evelyn B. Lee	1999
Clifford S. LeFevre	1997
K. L. McIff	1999
Paul S. Rogers	1995
Steven E. Snow	1995
Dale O. Zabriskie	1999
Cecelia H. Foxley, Commissioner	

* Term expires June 30 of year indicated.

Source: Utah Valley State College, Office of the President

UTAH STATE BOARD OF REGENT CHAIRS

Peter W. Billings	1969-1973
Donald B. Holbrook	1973-1973
George G. Hatch	1973-1977
Donald B. Holbrook	1977-1981
Kem C. Gardner	1981-1985
Sue Marie Young	1985-1987
W. Eugene Hansen	1987-1989
Douglas S. Foxley	1989-1993
Steven E. Snow	1993-present

UTAH COMMISSIONERS OF HIGHER EDUCATION

G. Homer Durham	1969-1976
Terrel H. Bell	1976-1981
Arvo Van Alstyne	1981-1985
Wm. Rolfe Kerr	1985-1993
Cecelia H. Foxley	1993-present

UTAH STATE BOARD OF EDUCATION UTAH STATE BOARD FOR VOCATIONAL EDUCATION CHAIRS

1991-present	Neola Brown	1972-73	John L. Owen
1990-91	Jay Liechty	1970-72	Helen B. Ure
1988-90	Ruth Hardy Funk	1968-70	LeGrand P. Backman
1985-88	Keith T. Checketts	1966-68	Lynn S. Richards
1984-85	M. Richard Maxfield	1964-66	Sheldon S. Allred
1982-84	Oscar McConkie	1962-64	LeGrand P. Backman
1981-82	Jay Monson	1960-62	Moroni H. Brown
1980-81	W. Dean Beinap	1958-60	W. C. Cole
1979-80	Lila Bjorklund	1956-58	Charles A. White
1978-79	Jay Monson	1954-56	R. V. Larson
1977-78	W. Dean Beinap	1952-54	Rulon Hinkley
1976-77	Joan Burnside	1950-52	William O. Bentley
1975-76	Reuben D. Law	1944-50	E. Allen Bateman
1973-75	W. Robert Wright	1940-44	Charles H. Skidmore

UTAH SYSTEM OF HIGHER EDUCATION

Institution

College of Eastern Utah
Dixie College
Salt Lake Community College
Snow College
Southern Utah University
University of Utah
Utah State University
Utah Valley State College
Weber State University

President

Dr. Michael A. Petersen
Dr. Robert C. Huddleston
Dr. Frank W. Budd
Dr. Gerald J. Day
Dr. Gerald R. Sherratt
Dr. Arthur K. Smith
Dr. George H. Emert
Dr. Kerry D. Romesburg
Dr. Paul H. Thompson

TUITION AND STUDENT FEES

	<u>Fall 1989</u>	<u>Fall 1990</u>	<u>Fall 1991</u>	<u>Fall 1992</u>	<u>Fall 1993</u>
Resident					
Based on:					
5 Credit Hours	\$178	\$279	\$298.00	\$328.25	\$339.25
10 Credit Hours	\$308	\$487	\$524.00	\$575.25	\$593.75
15 Credit Hours	\$389	\$597	\$619.50	\$661.75	\$683.25
Non-Resident					
Based on:					
5 Credit Hours	\$457	\$718	\$773.50	\$867.50	\$936.00
10 Credit Hours	\$818	\$1,309	\$1,417.50	\$1,582.00	\$1,708.00
15 Credit Hours	\$1,071	\$1,650	\$1,713.00	\$1,855.50	\$2,004.50

The tuition and fee schedule is partially linear; therefore, the amounts charged for tuition and fees change at each increment of total credit hours enrolled. The above figures show the amounts for three of these increments: 5, 10 and 15 credit hours.

STUDENT BODY PRESIDENTS

Stephen Hatch	American Fork, Utah	1993-1994
Paul Von Strahl	Orem, Utah	1992-1993
Ken Patey	Orem, Utah	1991-1992
Kelly Bitters	Orem, Utah	1990-1991
Deryn Young	Alton, Utah	1989-1990
Jim Woods	Provo, Utah	1988-1989
Ben Gould	Orem, Utah	1987-1988
George Marshall	Orem, Utah	1986-1987
Bobby Thomas	California	1985-1986
Jay Deuel	Tucson, Arizona	1984-1985
Gordon Wilson	Lehi, Utah	1983-1984
Scott Banasky	Green River, Utah	1982-1983
Kerry Graves	Mapleton, Utah	1981-1982
Mark Fisher	Lanham, Maryland	1980-1981
Lee Barrus	Othello, Washington	1979-1980
Bruce Burnett	Provo, Utah	1978-1979
Blake Buhler	American Fork, Utah	1977-1978
William Reese	Vernal, Utah	1976-1977
Mel Poulsen	Richfield, Utah	1975-1976
LaVerl Crosby	Provo, Utah	1974-1975
Randy Kidman	Ogden, Utah	1973-1974

STUDENT BODY PRESIDENTS

(continued)

Terry K. Holt	Brigham City, Utah	1972-1973
Ken Law	Springville, Utah	1971-1972
Norm Thorson	Provo, Utah	1970-1971
Richard L. Evans	Orem, Utah	1970-1971
Doug Wright	Provo, Utah	1969-1970
Bruce Smith	Orem, Utah	1968-1969
Gary Houser	Orem, Utah	1967-1968
Jim Tilson	Spanish Fork, Utah	1966-1967
Donald P. Fordham	Pleasant Grove, Utah	1965-1966
Chuck Goodyear	Indianapolis, Indiana	1964-1965
Glen LaVar Cox	Hinkley, Utah	1963-1964
Robert Button	Provo, Utah	1962-1963
Paul Hart	Orem, Utah	1961-1962
Duane Jonhson	Showlow, Arizona	1960-1961
Duane Johnson	Showlow, Arizona	1959-1960
William Nuttall	Provo, Utah	1958-1959
James G. Goodman	Roy, Utah	1957-1958
Lynn Powell	Nephi, Utah	1956-1957
Biane Elton	Santaquin, Utah	1955-1956
Clark Jolley	Pleasant Grove, Utah	1954-1955
Calvin Davies	Panguitch, Utah	1953-1954

STUDENT BODY PRESIDENTS
(continued)

William H. White	Goshen, Utah	1952-1953
Mark Anderson	Provo, Utah	1951-1952
Bill Hales	Pocatello, Idaho	1950-1951
Thomas Donald Forsyth	Provo, Utah	1949-1950
Lee Russell Cardall	Salt Lake City, Utah	1948-1949
Mark H. Nilsen	Provo, Utah	1947-1948
Don A. Taylor	Spanish Fork, Utah	1946-1947

TEACHER OF THE YEAR

1976-77	Elma Mack	1985-86	Wesley M. Bitters
1977-78	J. D. Davidson	1986-87	Kim I. Brewster
1978-79	Rex Losee	1987-88	Elma Mack
1979-80	Robert F. Steele	1988-89	David O. Litchford
1980-81	Stephen M. Trane	1989-90	Barbra Ann Hoge
1982-83	James E. Barnes	1990-91	Larry B. Marsing
1983-84	Rulon J. Wells	1991-92	Del Shumway
1984-85	Douglas L. Jorgensen	1992-93	Steve Adams

EMPLOYEE OF THE YEAR

1985-86	Helen Kennington	1989-90	Kathleen Crawford
1986-87	Linda L. Makin	1990-91	Terena Anderson
1987-88	James L. Michaelis	1991-92	vacant
	Keith Barlow	1992-93	(will be announced 12/93)
	Kenneth E. Mathews		
1988-89	Craig Gappmayer		
	Ruth Broderick		
	Shelley Olsen		

ATHLETICS

FINAL RECORDS AND CONFERENCE FINISHES

	<u>1987-88</u>	<u>1988-89</u>	<u>1989-90</u>	<u>1990-91</u>	<u>1991-92</u>	<u>1992-93</u>
WOMEN						
Basketball	23-4 (1st)	17-8 (5th)	26-4(1st)	29-3(1st)	26-3(1st)	26-5(1st)
Softball	17-12 (1st)	22-17(1st)	20-6 (1st)	17-13(2nd)	30-18(1st)	14-23(3rd)
Volleyball	35-6 (1st)	26-5 (1st)	24-9(1st)	31-9 (2nd)	32-18(2nd)	30-8(2nd)
Rodeo	3rd	3rd	2nd	4th	3rd	3rd
MEN						
Basketball	22-10 (4th)	29-5 (2nd)	22-12(2nd)	22-9(2nd)	28-5(2nd)	16-15(5th)
Baseball	33-11 (1st)	26-15 (2nd)	20-17(1st)	27-23(2nd)	22-20(3rd)	28-14(1st)
Rodeo	3rd	1st	2nd	2nd	2nd	3rd

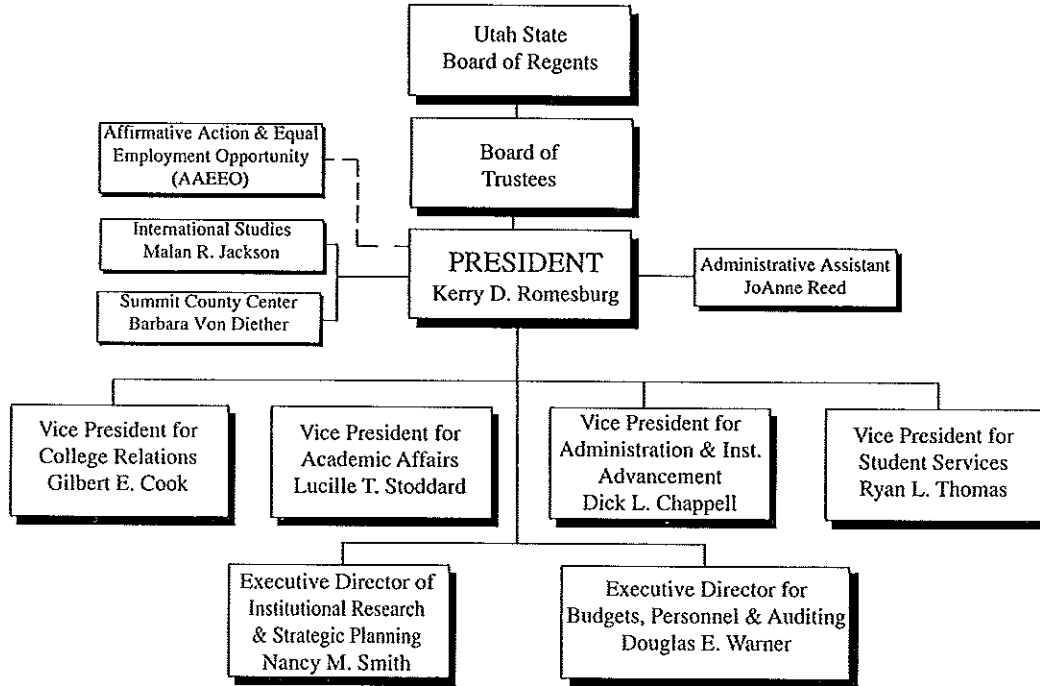
Source: Utah Valley State College, Sports Information Director
 Utah Valley State College, Rodeo Club

CONTENTS

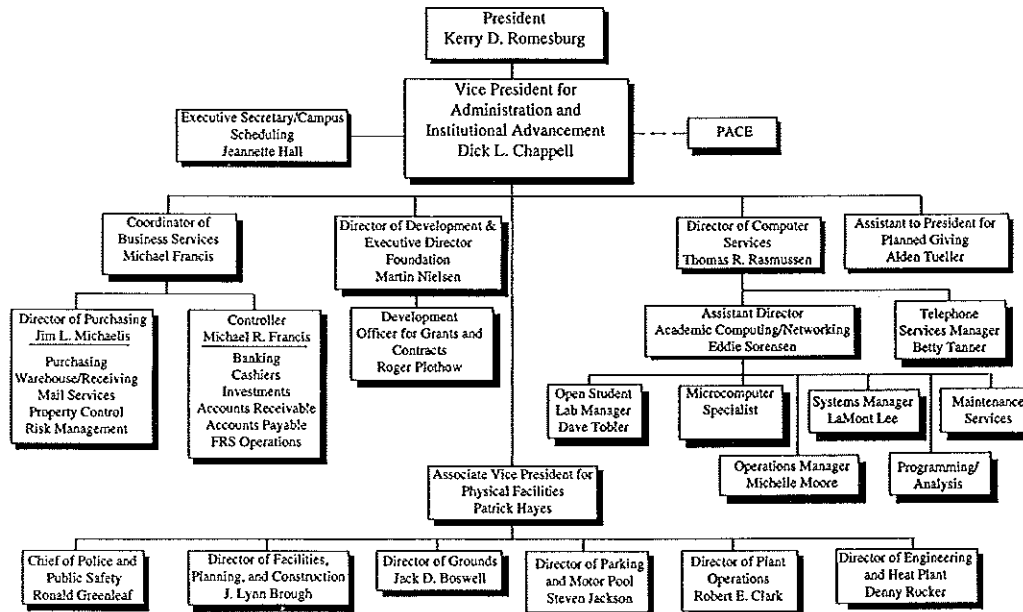
ADMINISTRATION

College Organizational Chart	21
Administration and Institutional Advancement (Organizational Chart)	22
College Relations (Organizational Chart)	23
Academic Affairs (Organizational Chart)	24
Institutional Research and Strategic Planning (Organizational Chart)	27
Student Services (Organizational Chart)	28
Budget Office (Organizational Chart)	29
Board of Trustees Members, Appointed as of June 16, 1993	30
Board of Trustees Chairs	31

Utah Valley State College Organizational Chart

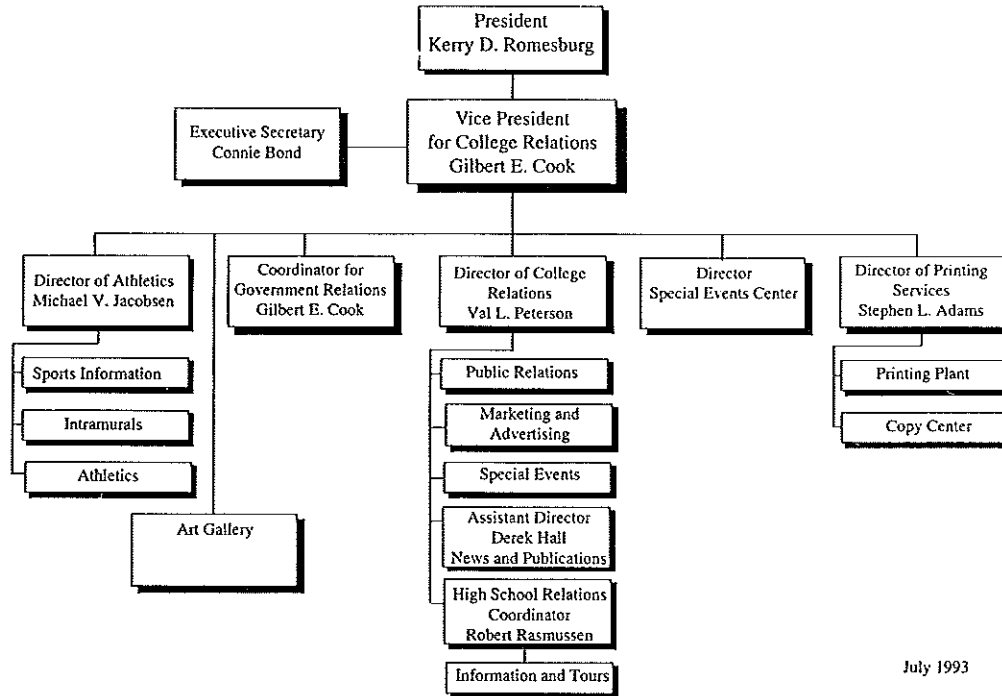


Administration and Institutional Advancement



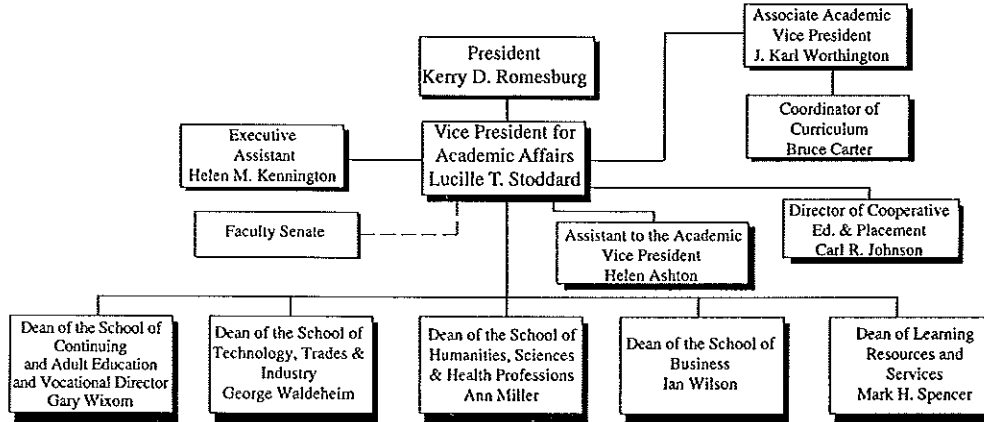
January 1993

College Relations



July 1993

Academic Affairs



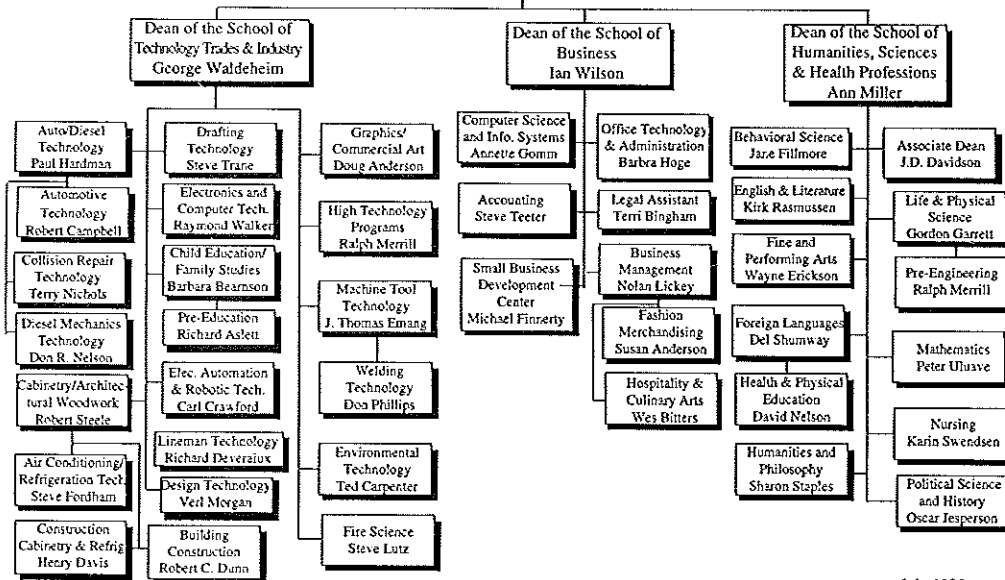
July 1993

Academic Affairs

(Continued)

President
Kerry D. Romesburg

Vice President for
Academic Affairs
Lucille T. Stoddard



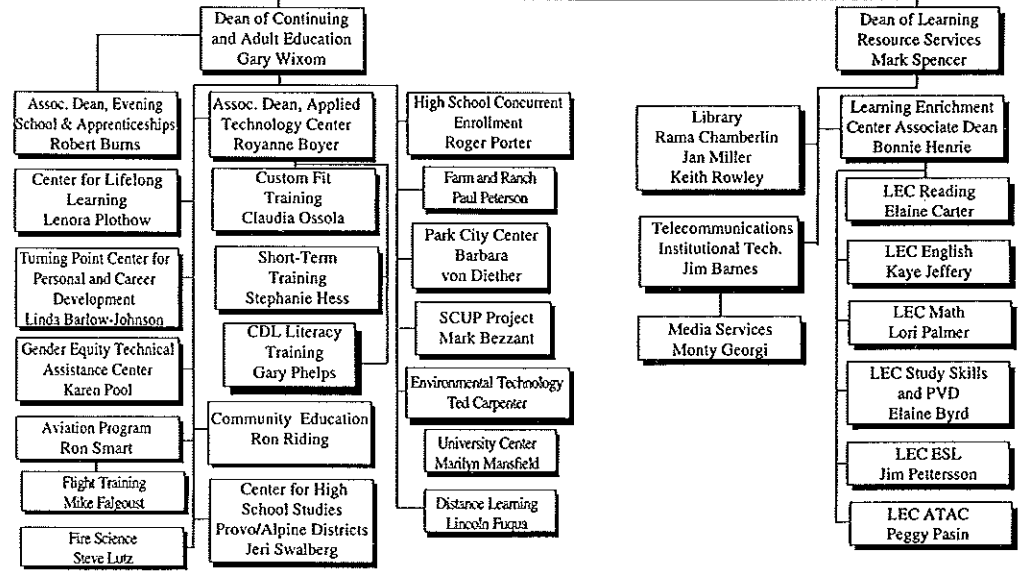
July 1993

Academic Affairs (Continued)

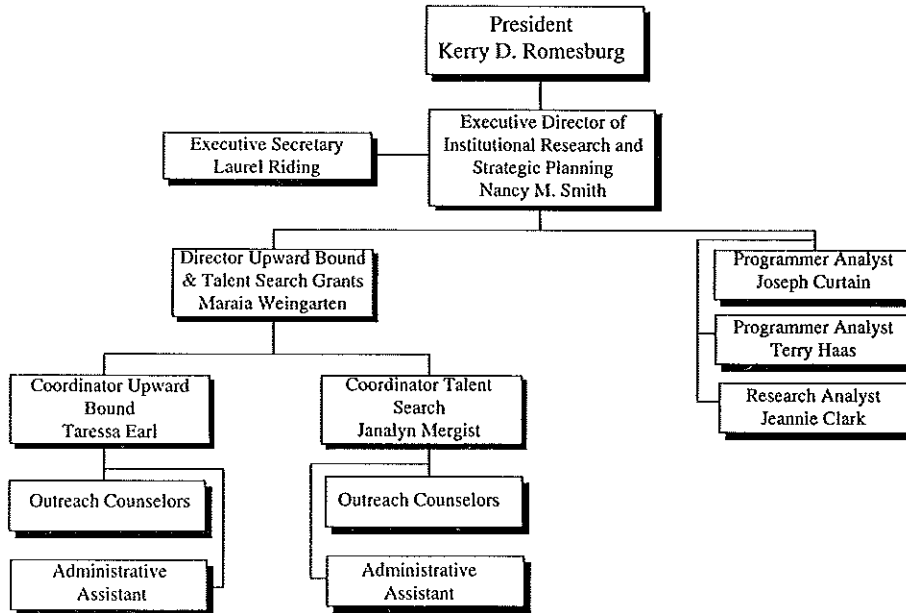
President
Kerry D. Romesburg

Vice President for
Academic Affairs
Lucille T. Stoddard

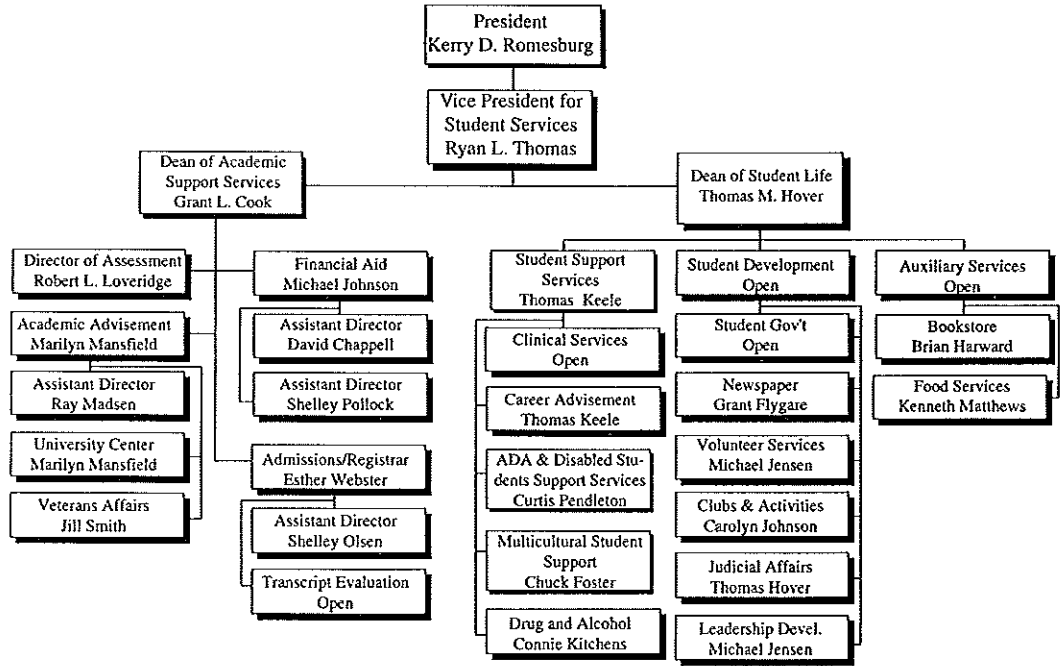
July 1993



Institutional Research and Strategic Planning

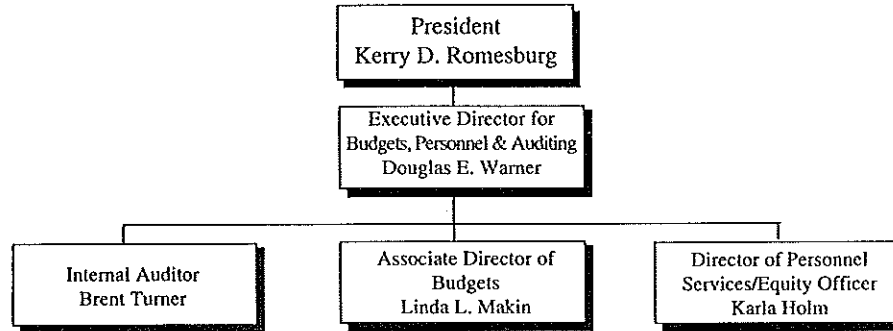


Student Services



October 1993

Budget Office



January 1993

BOARD OF TRUSTEES
Members Appointed by the Governor of Utah
as of June 16, 1993

<u>NAME</u>	<u>TERM EXPIRES</u>
Alan C. Ashton (Chair)	June 30, 1997
William A. Brown	June 1, 1994
Joseph A. Cannon	June 30, 1997
Ray M. Harding, Jr.	June 30, 1995
Stephen C. Hatch	April 30, 1994
Marianne F.G. Heaps	June 30, 1995
Nancy M. Heuston	June 30, 1995
Douglas W. Morrison	June 30, 1997
Paul K. Sybrowsky	June 30, 1997
Beth Tolbert (Vice Chair)	June 30, 1995

BOARD OF TRUSTEES CHAIRS

	<u>When Elected</u>
Alan Ashton	September 1993
Ray Harding	September 1991
DeLance Squire	July 1989
Mary Anne Wood	September 1985
Howard Pace	July 1982
Charles Bates	July 1980
Grant Burgon	July 1978

CONTENTS

FACULTY

Age Distribution of Full-Time Faculty by Degree and Gender, August 1993	32
Ethnic Distribution of Full-Time Faculty by Degree and Gender, August 1993	33
Universities Represented by Doctorates of Contract Faculty and Administrators, 1992-1993	34
Rank by Department, 1992-1993	38

**AGE DISTRIBUTION OF FULL-TIME FACULTY
BY DEGREE AND GENDER
August 1993**

		<u>26-30</u>	<u>31-35</u>	<u>36-40</u>	<u>41-45</u>	<u>46-50</u>	<u>51-55</u>	<u>56-60</u>	<u>Over 60</u>
Doctorate	Male	1	1	2	3	7	9	3	1
	Female	0	1	1	1	2	2	1	0
Masters	Male	0	5	10	12	13	16	9	1
	Female	3	3	6	3	7	9	2	2
Bachelors	Male	1	0	1	1	6	5	3	2
	Female	0	0	0	1	2	3	3	1
Associate	Male	1	1	0	1	5	1	1	0
	Female	0	0	0	0	0	0	0	0
No Degree	Male	0	2	1	2	2	2	2	2
	Female	0	0	0	0	0	0	0	0
Total		6	13	21	24	44	47	24	9

Source: Utah Valley State College, Personnel Office

**ETHNIC DISTRIBUTION OF FULL-TIME FACULTY
BY DEGREE AND GENDER
August 1993**

	<u>American Indian Alask/Nat</u>	<u>Asian Pacific Islander</u>	<u>Black</u>	<u>Caucasian</u>	<u>Hispanic</u>	<u>Other</u>
Doctorate						
Male	0	0	0	27	0	0
Female	0	0	0	8	0	0
Masters						
Male	0	2	0	64	0	0
Female	0	0	0	35	0	0
Bachelors						
Male	0	0	1	18	0	0
Female	0	0	0	10	0	0
Associate						
Male	0	0	0	10	0	0
Female	0	0	0	0	0	0
No Degree						
Male	0	0	0	12	0	1
Female	0	0	0	0	0	0
Total Male	0	2	1	131	0	1
Total Female	0	0	0	53	0	0

Source: Utah Valley State College, Personnel Office

UNIVERSITIES REPRESENTED BY
DOCTORATES OF CONTRACT FACULTY & ADMINISTRATORS
1992 - 1993

FACULTY

Aslett, Richard
Bingham, Terri C.
Buchman, Joseph
Bullock, Brent
Carey, Ernest
Chappell, Dick L.
Chipman, Ken
Crandall, Vern
Duckworth, Victoria
Fairclough, Dennis
Fillmore, Jane
Garrett, Gordon B.
Gomm, Annette J. (Thomason)
Grcic, Joseph
Greer, Dennis
Hammond, Ronald
Harris, James G.
Hinkson, Jimmy
Holbrook, Harwood

UNIVERSITY

Brigham Young University
Brigham Young University
Indiana University
Brigham Young University
University of Hawaii
Columbia Pacific University
Brigham Young University
University of Washington
University of Georgia
Brigham Young University
Brigham Young University
University of Southern California
Oklahoma State University
University of Notre Dame
Utah State University
Brigham Young University
University of Alberta Edmonton
Indiana University
Claremont Graduate School

UNIVERSITIES REPRESENTED BY
DOCTORATES OF CONTRACT FACULTY & ADMINISTRATORS

1992 - 1993

(continued)

FACULTY

Jackson, Malan R.
Jenkins, Robert B.
Laughton, Barbara
Lehnardt, Eberhard
Li, Ya
Loveridge, Robert L.
Mecham, Harvey Dee
Merrin, Christine Rossi
Miller, Ann
Nield, John
Oyler, Edward Dee
Parker, Bruce David
Perkins, Thomas
Plothow, Roger H.
Rasmussen, Kirk
Raynes, Joseph L.
Richan, Frederic P.
Richards, Grant L.
Richards, Kathleen

UNIVERSITY

Arizona State University
Utah State University
University of California
Rice University
University of Utah
New Mexico State University
Brigham Young University
New Mexico State University
Kent State University
Idaho State University
Brigham Young University
Utah State University
University of Utah
Brigham Young University
University of Utah
Texas A & M University
University of Northern Colorado
Brigham Young University
Utah State University

UNIVERSITIES REPRESENTED BY
DOCTORATES OF CONTRACT FACULTY & ADMINISTRATORS

1992 - 1993

(continued)

FACULTY

Romesburg, Kerry D.
Rosenthal, Sherry
Shively, Michael
Shumway, Del K.
Silvia, Alfred
Smith, D.J.
Smith, Nancy M.
Spafford, Ann
Staples, Sharon L.
Stoddard, Lucille T.
Szentpeteri, Georgina
Tayler, Paul L.
Tobin, S. Carl
Tueller, Alden B.
Vawdrey, Colleen
Waldheim, George
Warner, Douglas E.

UNIVERSITY

Arizona State University
University of California
Purdue University
Washington University, St. Louis
University of Pittsburgh
University of Utah
Brigham Young University
Brigham Young University
University of Utah
Utah State University
University of Economics, Budapest
University of Utah
Northern Arizona University
University of California
Utah State University
California State University
Arizona State University

UNIVERSITIES REPRESENTED BY
DOCTORATES OF CONTRACT FACULTY & ADMINISTRATORS
1992 - 1993
(continued)

FACULTY

Whaley, Wayne
Wilson, Ian Kenneth
Wixom, Gary
Worthington, J. Karl

UNIVERSITY

Brigham Young University
University of Calgary
Brigham Young University
University of Iowa

RANK BY DEPARTMENT 1992 - 1993

<u>DEPARTMENT</u>	<u>PROFESSOR</u>	<u>ASSOCIATE PROFESSOR</u>	<u>ASSISTANT PROFESSOR</u>	<u>INSTRUCTOR</u>
Accounting	1	0	3	1
Air Conditioning	0	0	1	1
Automotive	0	2	0	3
Aviation	1	0	0	0
Behavioral Sciences	1	1	2	0
Building Trades	2	0	0	0
Business Management	4	1	2	3
Cabinetry	1	0	0	1
Child Education	3	0	3	1
Collision Repair	0	1	1	1
Computer Information	2	2	3	3
Coop	0	0	0	1
Criminal Justice	0	0	0	1
Culinary Arts	0	0	0	2
Diesel Mechanics	2	2	0	0
Drafting Technology	2	1	0	2
Electrical Automation	4	0	0	0
Electronics	3	3	4	0

RANK BY DEPARTMENT
1992 - 1993
(continued)

<u>DEPARTMENT</u>	<u>PROFESSOR</u>	<u>ASSOCIATE PROFESSOR</u>	<u>ASSISTANT PROFESSOR</u>	<u>INSTRUCTOR</u>
English	0	1	6	8
Environmental Tech	0	0	0	1
Fashion Merchandising	0	1	0	0
Fine Arts	0	2	1	3
Fire Science	0	1	0	0
Foreign Language	0	1	2	0
Graphics/Commercial Art	4	0	0	1
Health/PE	0	3	1	5
Hospitality Management	1	0	0	0
Humanities	1	2	2	1
Learning Enrichment	0	6	7	7
Legal Assisting	0	1	2	0
Life & Physical Science	3	3	4	4
Lineman Technology	0	0	0	2
Machine Tool Technology	1	0	1	1
Math & Science	1	2	6	6
Nursing	0	6	4	4

RANK BY DEPARTMENT

1992 - 1993

(continued)

<u>DEPARTMENT</u>	<u>PROFESSOR</u>	<u>ASSOCIATE PROFESSOR</u>	<u>ASSISTANT PROFESSOR</u>	<u>INSTRUCTOR</u>
Office Technology	2	2	4	2
Pre-Engineering	1	0	1	0
Professional Driving	1	1	0	0
Social/Political Science	2	3	2	0
Welding	2	0	0	0

CONTENTS

ENROLLMENT

Headcount Enrollment, Fall Semester 1993	41
Full-Time Equivalent Enrollment, Fall Semester 1993	42
Enrollment Comparison - Annualized FTE Students (bar graph)	43
Enrollment History, Fall Semesters 1987-1993 (bar graph)	44
Enrollment History, Spring Semesters 1987-1993 (bar graph)	45
Enrollment History, Summer Terms 1987-1993 (bar graph)	46
County Resident/Non-Resident Headcount, Fall Semesters 1987-1993	47
Resident/Non-Resident Headcount, Fall Semesters 1987-1993 (bar graph)	48
Utah System of Higher Education - Headcount Enrollment by Utah County Residency (bar graph)	49
Part-Time/Full-Time Headcount, Fall Semesters 1987-1993	50
Part-Time/Full-Time Headcount, Fall Semesters 1987-1993 (bar graph)	51
Headcount by Area of Study, Fall Semesters 1987-1993 (bar graph)	52
Average Credit Hours Per Student, Fall Semester 1993 (bar graph)	53
Average Credit Hours Per Student by School, Fall Semesters 1987-1993	54
Average Credit Hours Per Student, Fall Semesters 1987-1993 (bar graph)	55
Enrollment Comparison of Utah Universities/Colleges, Fall 1992	56

HEADCOUNT ENROLLMENT Fall Semester 1993

TOTAL HEADCOUNT 10,510

Male	5,608	53%	Freshmen	7,347	70%
Female	4,902	47%	Sophomores	3,163	30%
Resident	9,299	88%	Part-time	5,165	49%
Non-resident	1,211	12%	Full-time	5,345	51%
Vocational-Technical Majors	3,773	36%	Average Age	23.2	
General Studies Majors	6,737	64%			

FULL-TIME EQUIVALENT ENROLLMENT Fall Semester 1993

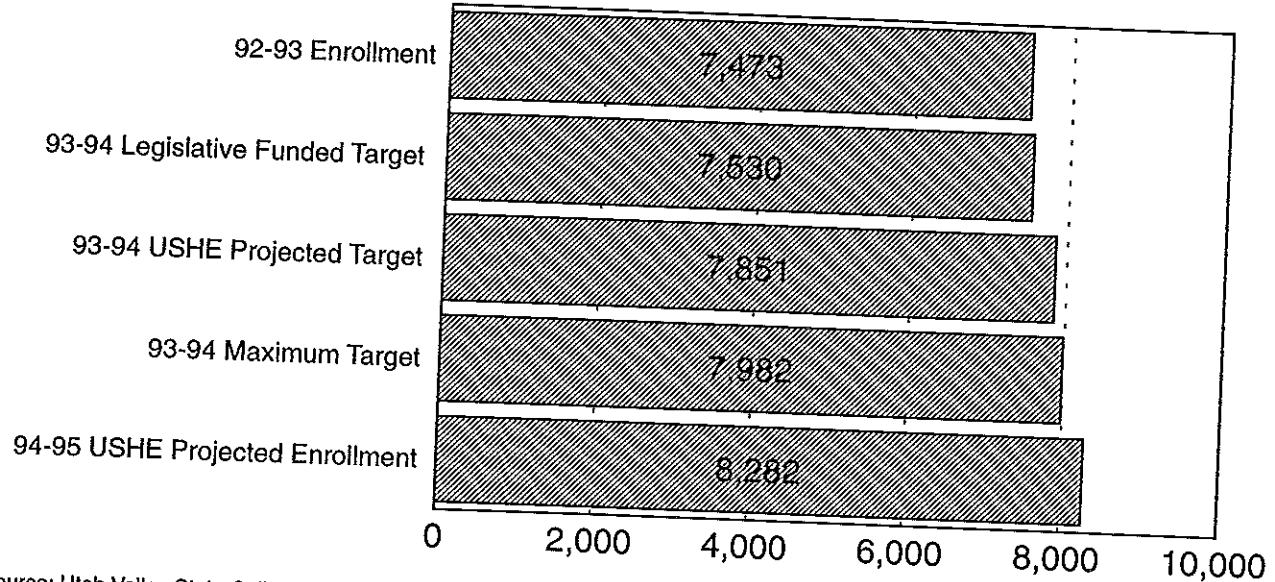
TOTAL FULL-TIME EQUIVALENT (FTE)* 7,181

Vocational-Technical Majors	2,488.6	35%
General Studies Majors	4,692.4	65%
Residents	6,224.0	87%
Non-residents	957.0	13%
Part-time	1,236.0	17%
Full-time	5,945.9	83%

*Full-time equivalent is the total number of credit hours in which students are enrolled divided by 15 (the credit hour load of a hypothetical "full-time" student).

ENROLLMENT COMPARISON

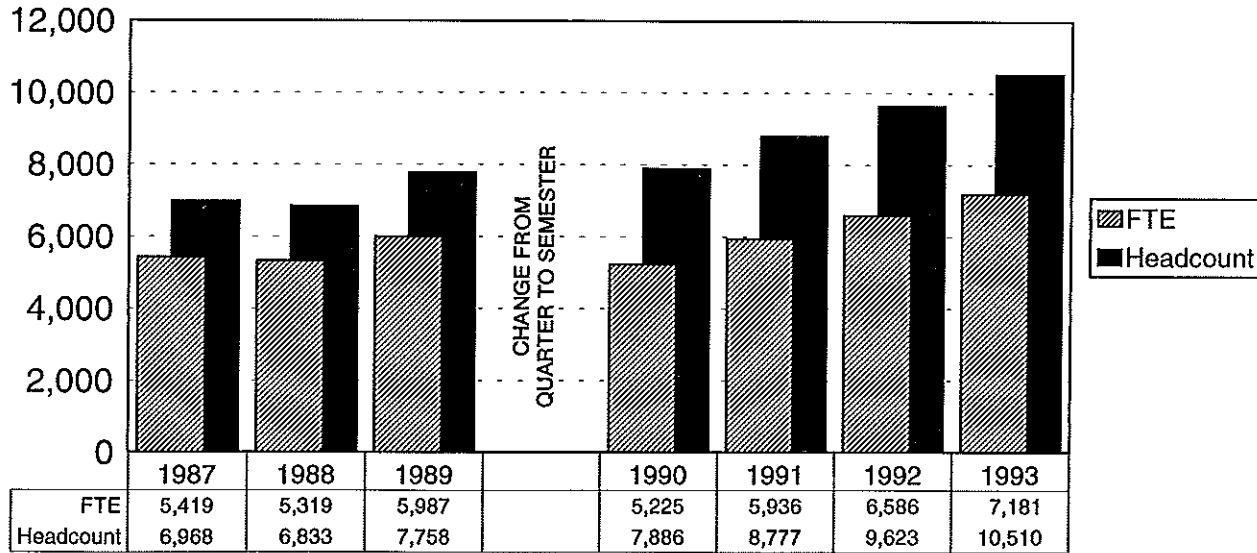
Annualized FTE Students



Source: Utah Valley State College, Budget Office

ENROLLMENT HISTORY

Fall Semesters 1987 - 1993*

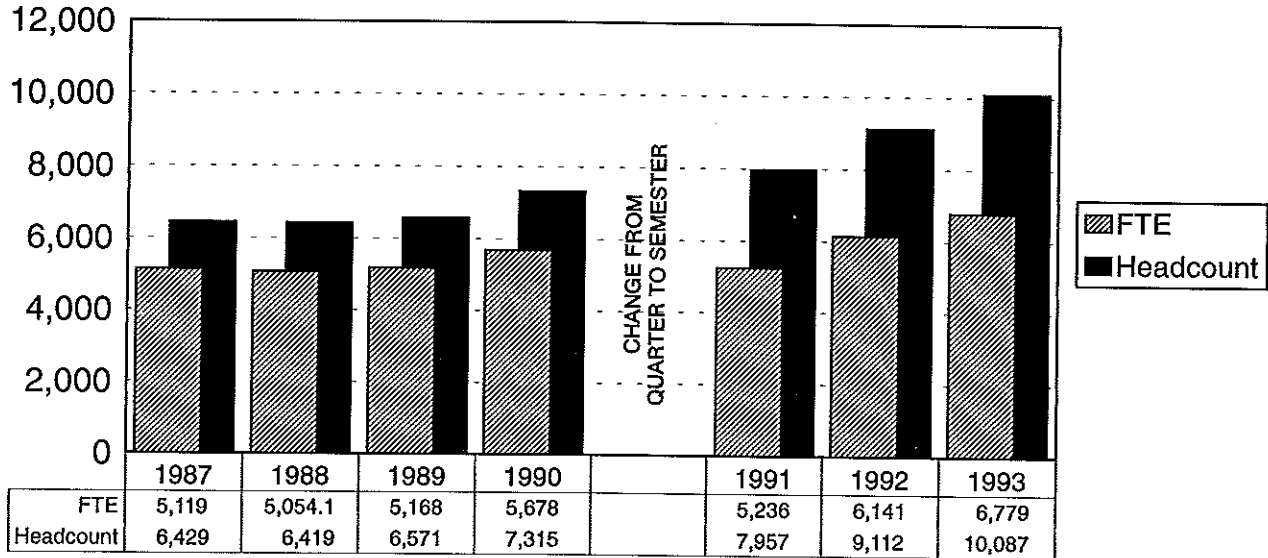


Source: Utah Valley State College, Office of Institutional Research and Strategic Planning

*Fall 1987-1989 Quarters

ENROLLMENT HISTORY

Spring Semesters 1987-1993*

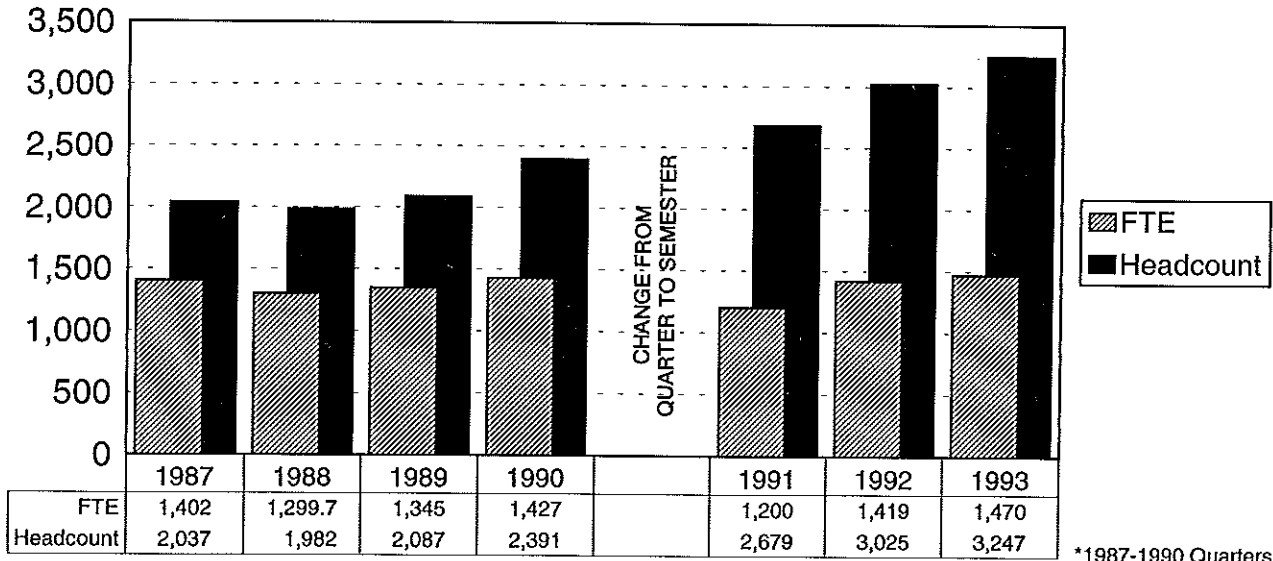


*Spring 1987-1990 Compared to Winter Quarters

Source: Utah Valley State College, Office of Institutional Research and Strategic Planning

ENROLLMENT HISTORY

Summer Terms 1987-1993*

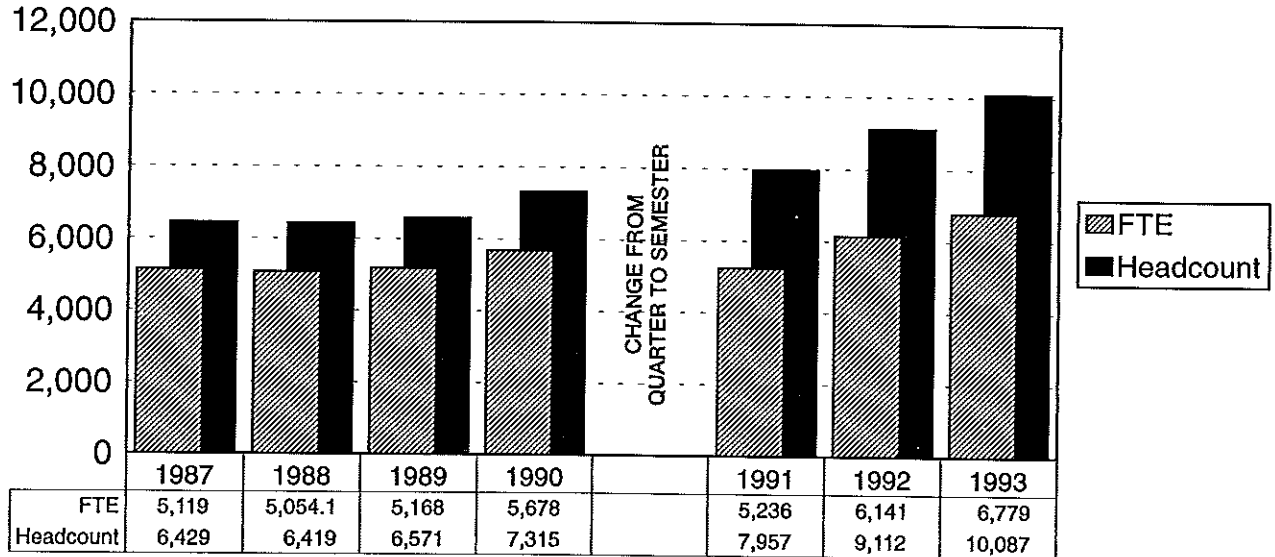


*1987-1990 Quarters

Source: Utah Valley State College, Office of Institutional Research and Strategic Planning

ENROLLMENT HISTORY

Spring Semesters 1987-1993*

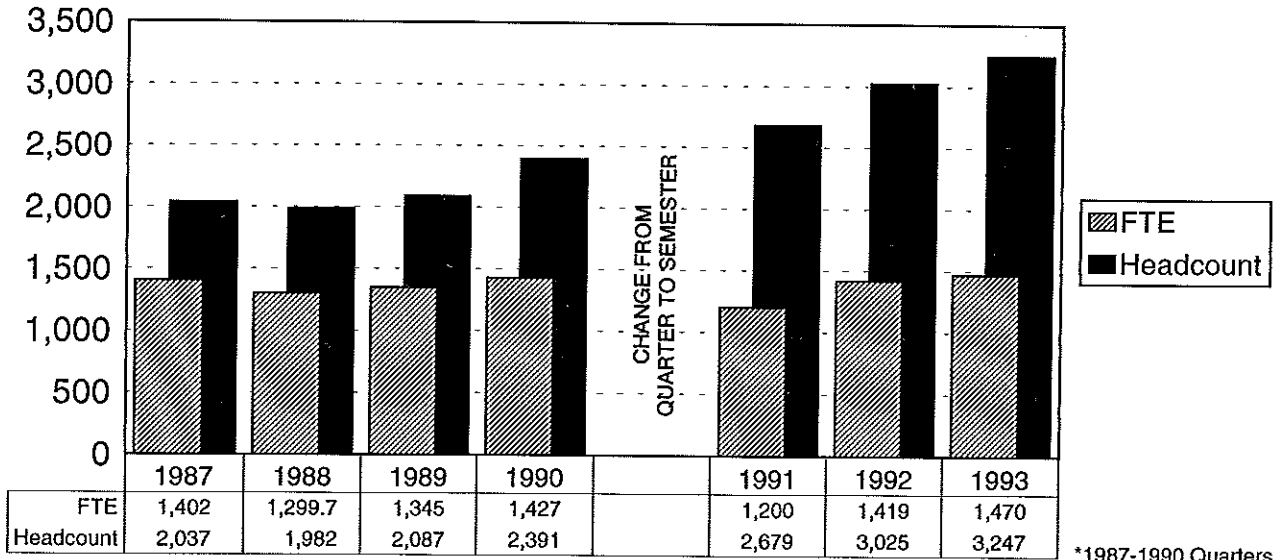


*Spring 1987-1990 Compared to Winter Quarters

Source: Utah Valley State College, Office of Institutional Research and Strategic Planning

ENROLLMENT HISTORY

Summer Terms 1987-1993*



*1987-1990 Quarters

Source: Utah Valley State College, Office of Institutional Research and Strategic Planning

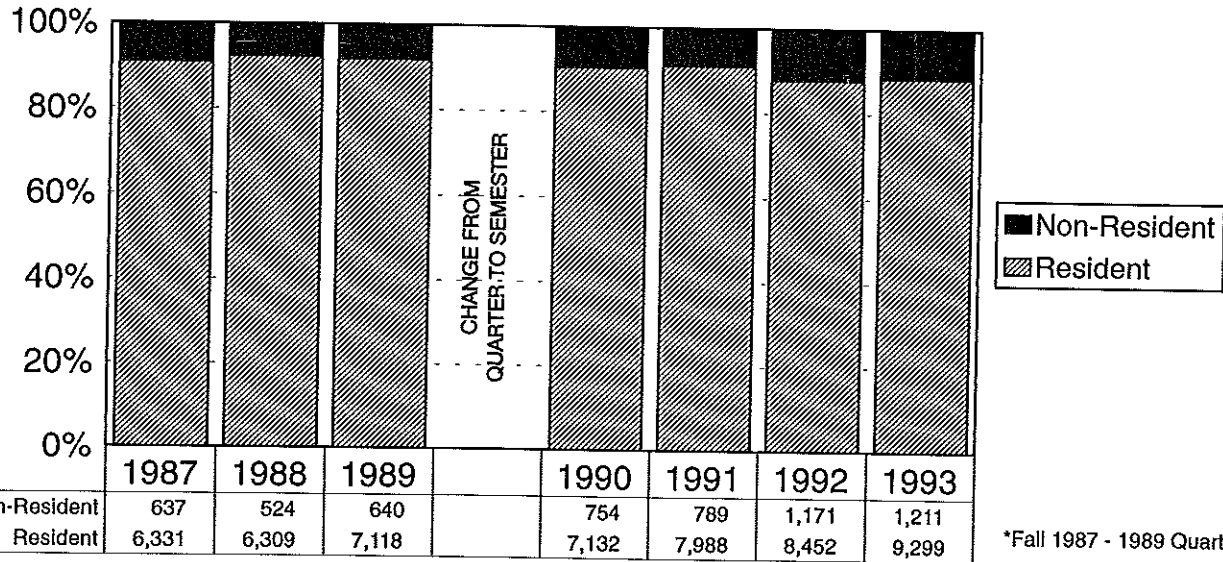
COUNTY RESIDENT/NON-RESIDENT HEADCOUNT FALL SEMESTERS 1987-1993*

	<u>1987</u>	<u>1988</u>	<u>1989</u>	<u>1990</u>	<u>1991</u>	<u>1992</u>	<u>1993</u>
TOTAL	6,968	6,833	7,758	7,886	8,777	9,623	10,510
Resident	6,331	6,309	7,118	7,132	7,988	8,452	9,299
%	91	92	92	90	91	88	88
Utah County	5,325	4,790	5,245	5,142	5,623	5,816	7,177
%	76	70	68	65	65	61	68
Salt Lake County	255	274	292	286	464	397	626
%	4	4	4	4	5	4	6
Wasatch County	90	96	116	90	104	112	188
%	1	1	1	1	1	1	2
Other Counties	661	1,149	1,465	1,614	1,797	2,127	1,308
%	9	17	19	20	20	22	12
Non-resident	637	524	640	754	789	1,171	1,211
%	9	8	8	10	9	12	12
Other States	506	433	460	548	670	831	868
%	7	6	6	7	8	8	9
Foreign	131	91	180	206	119	340	343
%	2	1	2	3	1	4	3

*Fall 1987-1989 Quarters

RESIDENT/NON-RESIDENT HEADCOUNT

Fall Semesters 1987 - 1993*

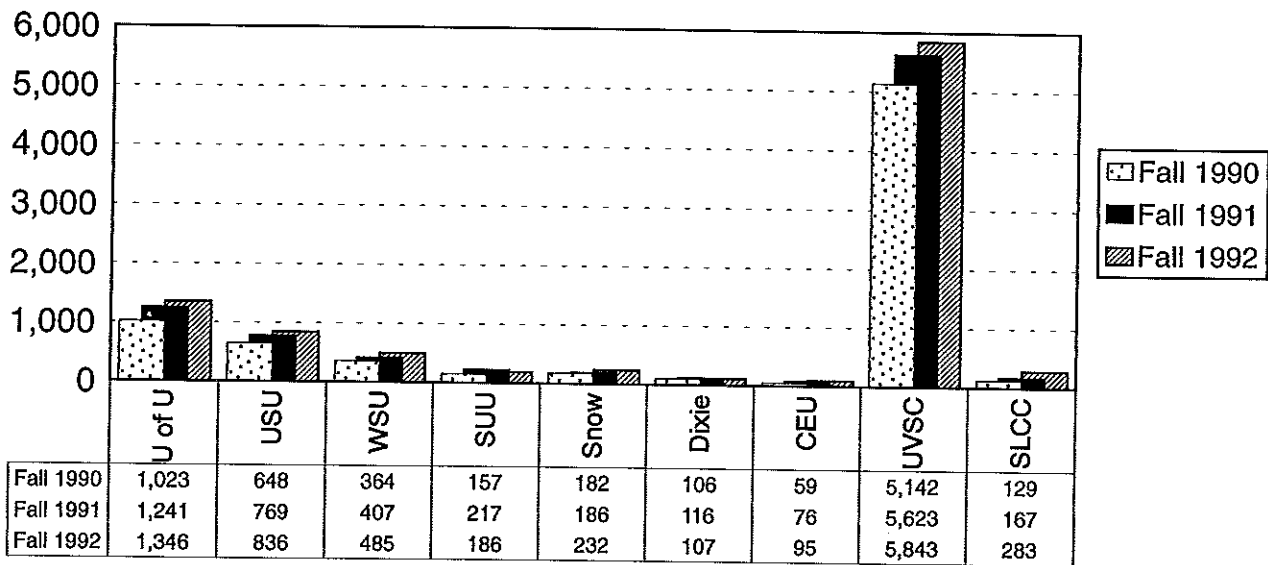


*Fall 1987 - 1989 Quarters

Source: Utah Valley State College, Office of Institutional Research and Strategic Planning

UTAH SYSTEM OF HIGHER EDUCATION

Headcount Enrollment by Utah County Residency



Source: Utah System of Higher Education, 1993-94 Data Book

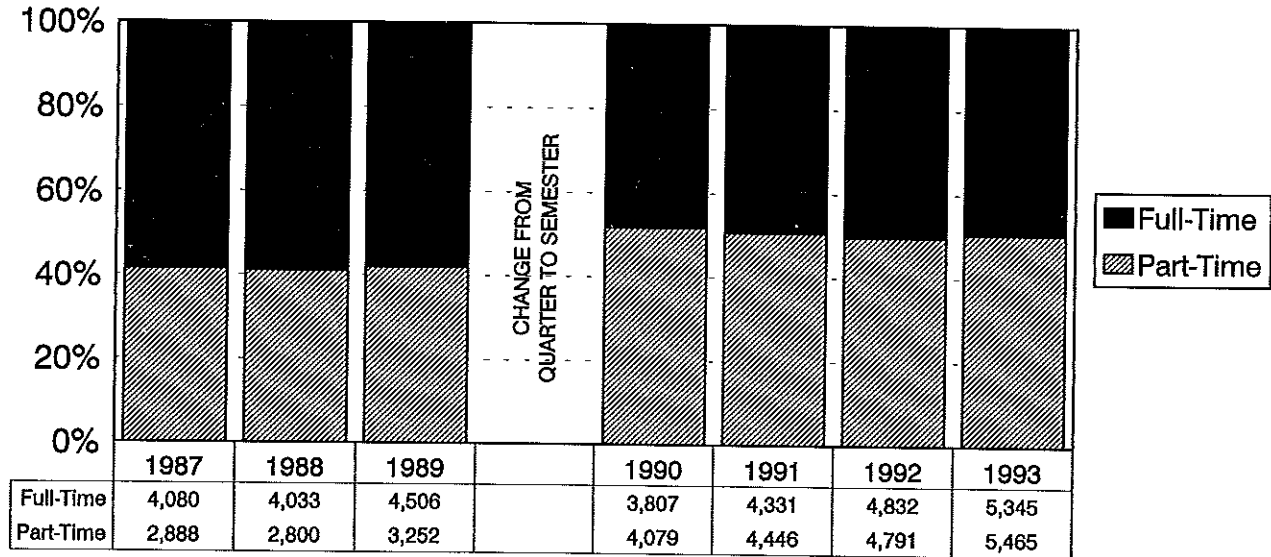
PART-TIME/FULL-TIME HEADCOUNT - FALL SEMESTERS 1987-1993*

	<u>1987</u>	<u>1988</u>	<u>1989</u>	<u>1990</u>	<u>1991</u>	<u>1992</u>	<u>1993</u>
TOTAL	6,968	6,833	7,758	7,886	8,777	9,623	10,510
Part-time	2,888	2,800	3,252	4,079	4,446	4,791	5,165
< 7 hours	1,387	1,337	1,473	2,209	2,448	2,461	2,685
7 - 11 hours	1,501	1,463	1,779	1,870	1,998	2,330	2,480
Full-time	4,080	4,033	4,506	3,807	4,331	4,832	5,345
12 hours	556	604	695	1,525	1,369	1,544	1,748
13 hours	682	661	787	851	941	1,084	1,175
14 hours	423	442	543	468	657	778	852
15 hours	1,163	1,194	1,350	422	582	619	646
16 hours	372	320	382	271	374	373	427
17 hours	211	237	160	110	217	242	257
18 hours	268	246	247	74	89	119	147
19 hours	162	86	103	34	30	45	48
20 hours	135	141	120	19	31	18	22
> 20 hours	108	102	119	33	41	10	23

*Fall 1987-1989 Quarters

PART-TIME/FULL-TIME HEADCOUNT

Fall Semesters 1987 - 1993*

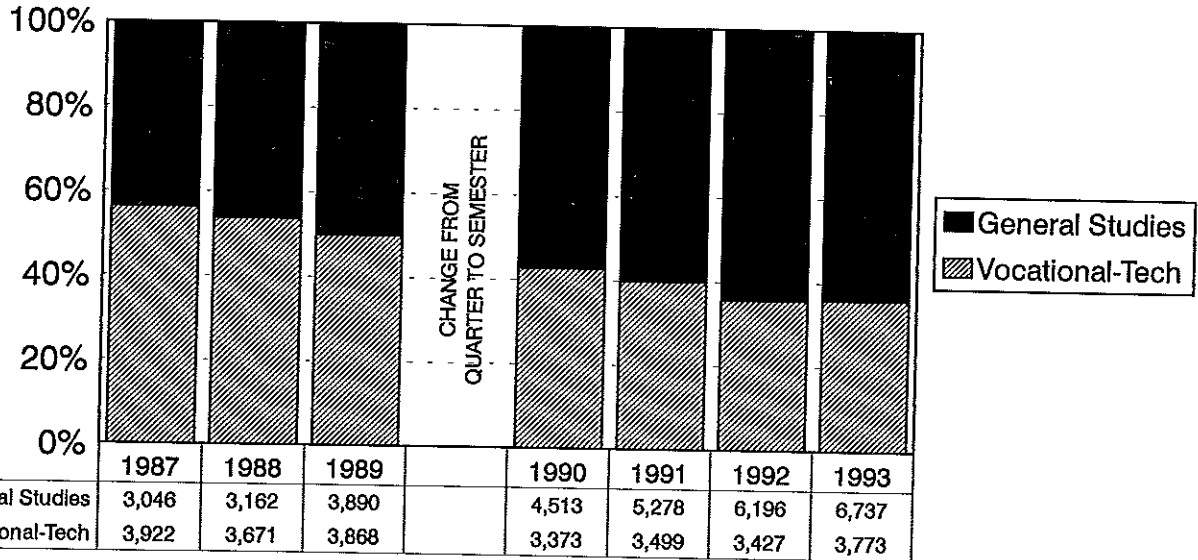


Source: Utah Valley State College, Office of Institutional Research and Strategic Planning

*Fall 1987 - 1989 Quarters

HEADCOUNT BY AREA OF STUDY

Fall Semesters 1987 - 1993*

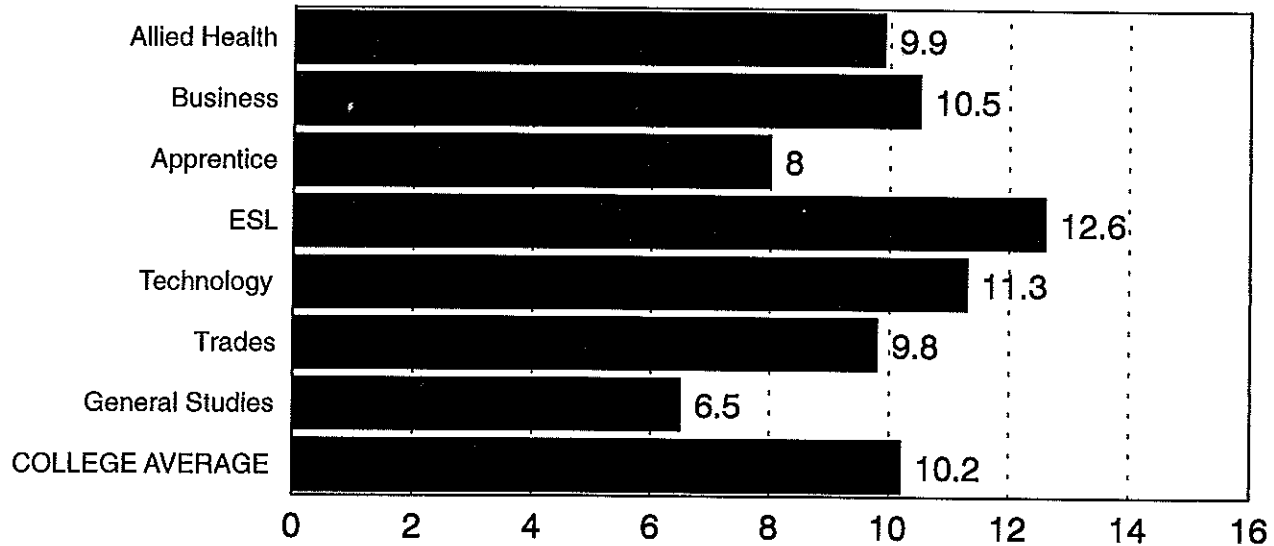


Source: Utah Valley State College, Office of Institutional Research and Strategic Planning

*1987 - 1989 Quarters

AVERAGE CREDIT HOURS PER STUDENT

Fall Semester 1993



Source: Utah Valley State College, Office of Institutional Research and Strategic Planning

AVERAGE CREDIT HOURS PER STUDENT BY SCHOOL

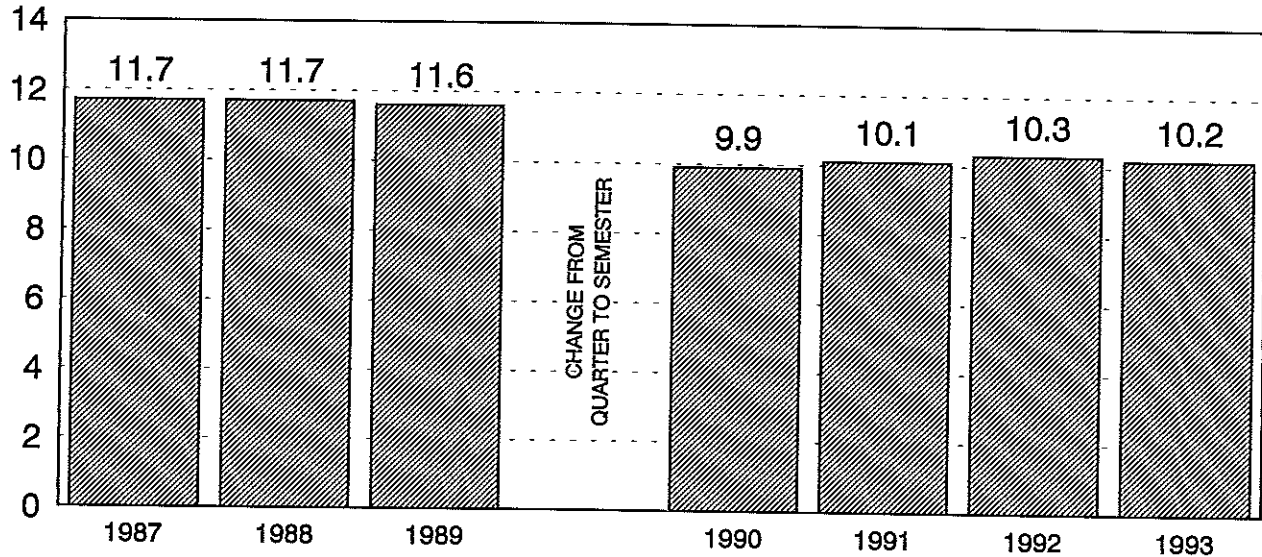
Fall Semesters 1987 - 1993*

<u>SCHOOL OF</u>	<u>1987</u>	<u>1988</u>	<u>1989</u>	<u>1990</u>	<u>1991</u>	<u>1992</u>	<u>1993</u>
Allied Health	12.6	12.9	11.9	9.7	9.6	9.6	9.9
Business	11.2	11.2	11.3	9.8	10.1	10.3	10.5
Apprentice	6.2	6.6	7.0	5.0	4.7	6.0	8.0
General Studies	11.3	11.8	11.5	10.0	10.2	10.3	6.5
Learning Enrichment	12.0	11.5	11.8	11.4	11.8	13.2	12.6
Technology	13.7	11.4	11.5	9.7	10.8	10.2	11.3
Trades	13.2	13.6	13.4	11.2	10.1	11.6	9.8
 College Average	 11.7	 11.7	 11.6	 9.9	 10.1	 10.3	 10.2

*Fall 1987-1989 Quarters

AVERAGE CREDIT HOURS PER STUDENT

Fall Semesters 1987 - 1993*



Source: Utah Valley State College, Office of Institutional Research and Strategic Planning

*1987 - 1989 Quarters

ENROLLMENT COMPARISON OF UTAH UNIVERSITIES AND COLLEGES FALL 1992

<u>University/College</u>	<u>Headcount</u>	<u>FTE</u>
University of Utah	26,799	20,971
Utah State University	17,114	13,121
Weber State University	14,993	11,128
Southern Utah University	4,434	3,736
Salt Lake Community College	17,767	10,953
Utah Valley State College*	9,623	6,586
Dixie College	2,868	2,402
College of Eastern Utah	2,746	1,875
Snow College	2,819	2,452

*Utah Valley State College changed to semesters Fall 1990

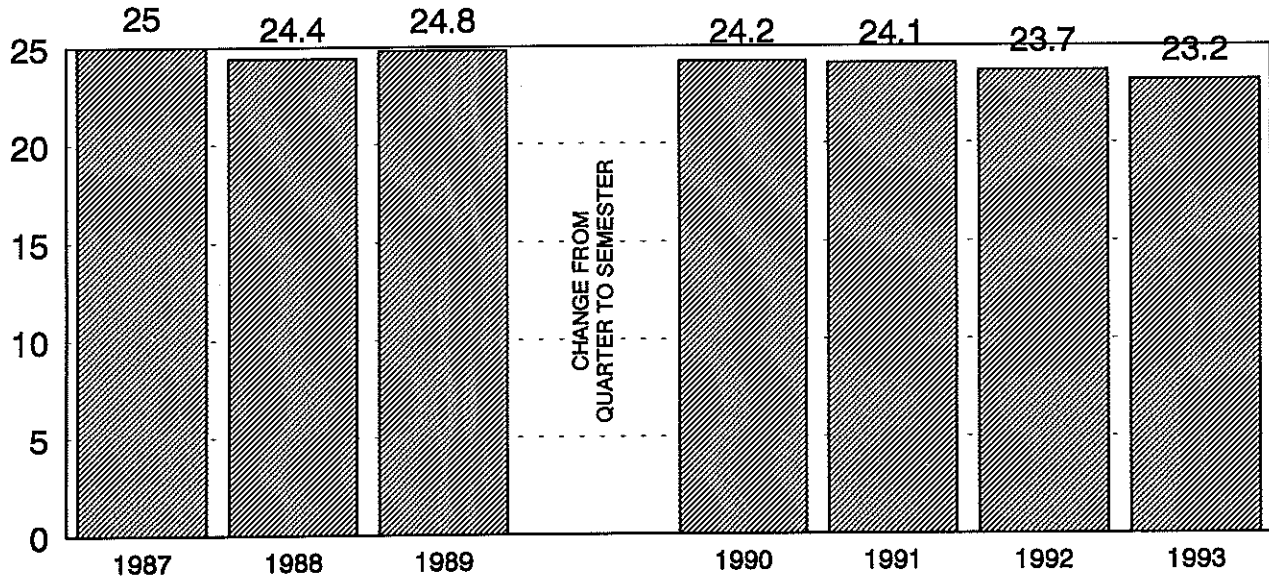
CONTENTS

STUDENT PROFILE

Mean Age of Students, 1987-1993 (bar graph)	57
Headcount Distribution by Age, Fall 1987-1993	58
Headcount Distribution by Ethnic Group, Fall 1987-1993	59
Male/Female Headcount, Fall 1987-1993 (bar graph)	60
Freshman/Sophomore Headcount, 1987-1993 (bar graph)	61
Geographic Origin of Students, United States, Fall 1993 (map)	62
Geographic Origin of Students, United States, Fall 1990-1993	63
Citizenship of Foreign Students, Fall 1993 (map)	67
Citizenship of Foreign Students, Fall 1990-1993	68
Graduate Degrees and Certificates Awarded 1991-92 and 1992-93	72

MEAN AGE OF STUDENTS

Fall Semesters 1987 - 1993*



Source: Utah Valley State College, Office of Institutional Research and Strategic Planning

*Fall 1987 - 1989 Quarters

HEADCOUNT DISTRIBUTION BY AGE FALL SEMESTERS 1987-1993*

	<u>1987</u>	<u>1988</u>	<u>1989</u>	<u>1990</u>	<u>1991</u>	<u>1992</u>		<u>1993</u>
TOTAL	6,968	6,833	7,758	7,886	8,777	9,623		10,510
Under 19 years	969	1,032	1,244	1,288	1,378	2,023	Under 18 years	282
19-20 years	1,362	1,405	1,643	1,684	1,842	1,808	18-19 years	2,917
21-22 years	1,215	1,273	1,405	1,401	1,702	1,911	20-21 years	1,738
23-24 years	884	871	1,023	1,053	1,184	1,167	22-24 years	2,467
25-29 years	1,107	1,009	1,156	1,120	1,225	1,261	25-29 years	1,372
30-34 years	584	535	526	556	629	597	30-34 years	684
35-39 years	353	297	351	366	363	388	35-39 years	449
Over 39 years	488	395	408	408	450	468	Over 39 years	601
Unknown	6	16	2	12	4	0		0
Mean Age	25.0	24.4	24.8	24.2	24.1	23.7		23.2

*Fall 1987-1989 Quarters

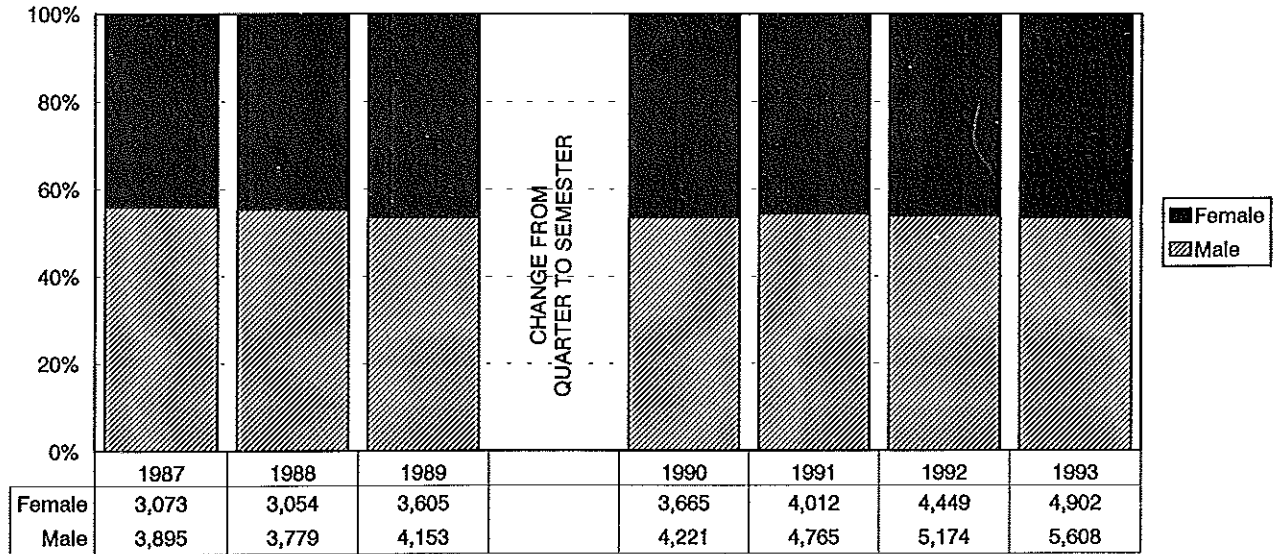
HEADCOUNT DISTRIBUTION BY ETHNIC GROUP Fall Semesters 1987 - 1993*

	<u>1987</u>	<u>1988</u>	<u>1989</u>	<u>1990</u>	<u>1991</u>	<u>1992</u>	<u>1993</u>
Total	6,968	6,833	7,758	7,886	8,777	9,623	10,510
White	6,452	6,341	7,205	7,280	8,103	8,839	9,616
Hispanic	142	122	169	186	218	204	264
Asian-Islander	110	90	92	104	133	138	149
American Indian	111	112	97	91	97	85	124
Black	6	9	15	19	15	17	14
Non-Resident Alien	147	159	180	206	211	340	343

*Fall 1987-1989 Quarters

MALE/FEMALE HEADCOUNT

Fall Semesters 1987 - 1993*

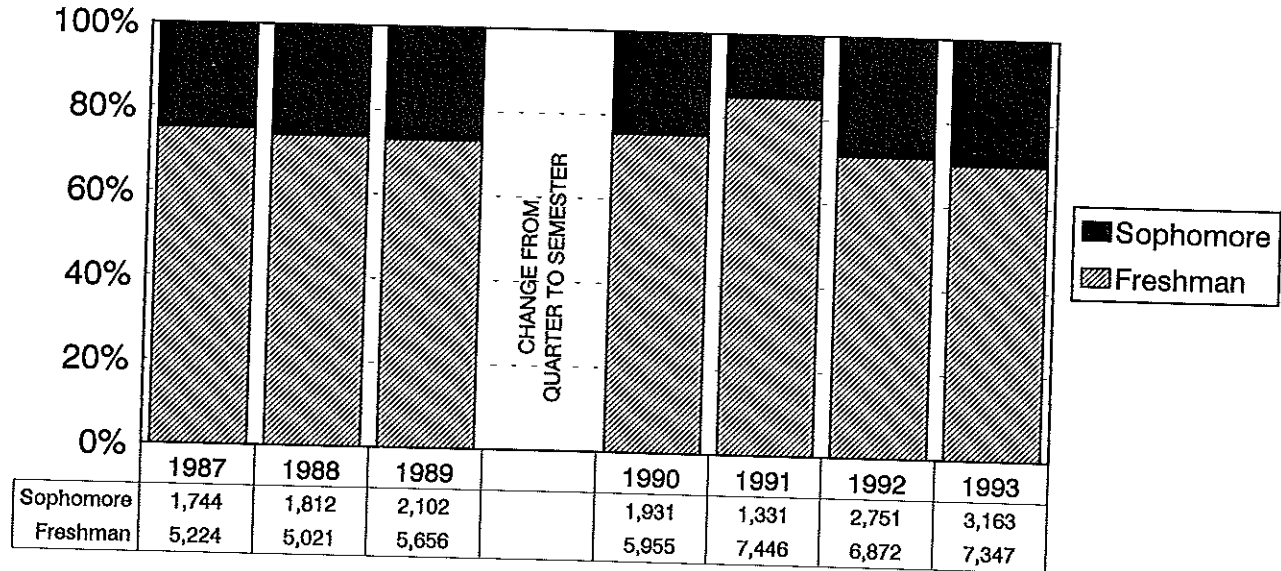


Source: Utah Valley State College, Office of Institutional Research and Strategic Planning

*Fall 1987 - 1989 Quarters

FRESHMAN/SOPHOMORE HEADCOUNT

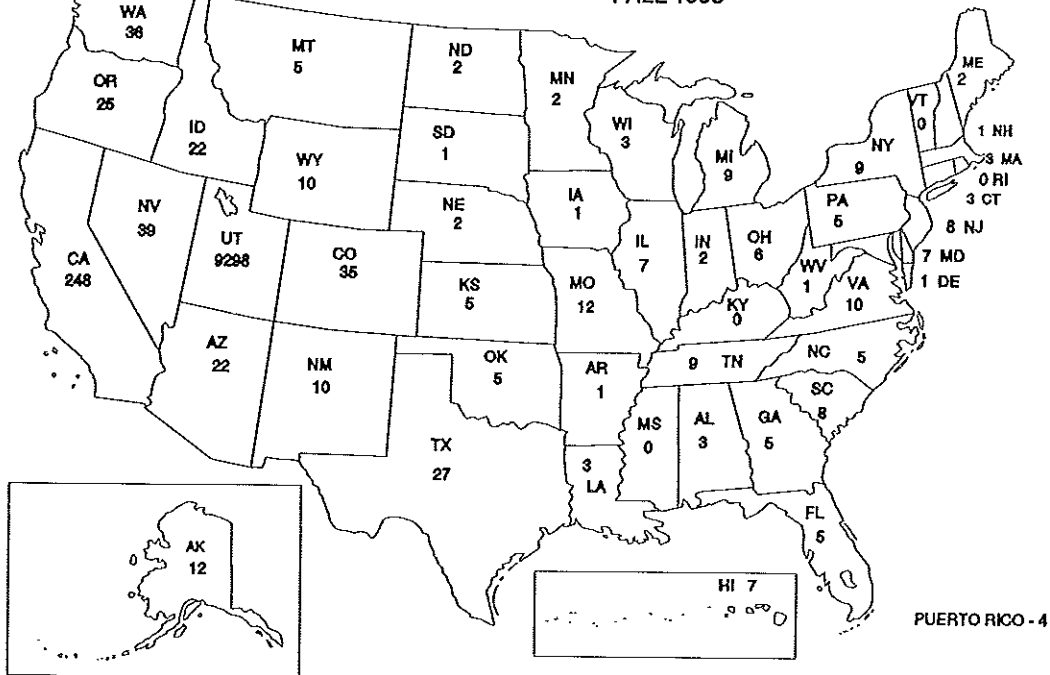
Fall Semesters 1987-1993*



Source: Utah Valley State College, Office of Institutional Research and Strategic Planning

*1987-1989 Quarters

GEOGRAPHIC ORIGIN OF STUDENTS - UNITED STATES FALL 1993



Source: Utah Valley State College, Office of Institutional Research and Strategic Planning

GEOGRAPHIC ORIGIN OF STUDENTS
FALL 1990-1993
UNITED STATES

<u>States Represented</u>	<u>1990</u>	<u>1991</u>	<u>1992</u>	<u>1993</u>
Alabama	1	2	2	3
Alaska	18	5	6	12
Arizona	98	134	59	22
Arkansas	5	5	1	1
California	413	497	345	248
Colorado	57	68	38	35
Connecticut	4	13	6	3
Delaware	0	0	1	1
Florida	39	30	9	5
Georgia	8	15	6	5
Hawaii	11	12	4	7
Idaho	117	123	46	22
Illinois	23	25	5	7
Indiana	8	10	5	2
Iowa	7	5	3	1
Kansas	11	10	5	5
Kentucky	2	5	1	0

GEOGRAPHIC ORIGIN OF STUDENTS

FALL 1990-1993

UNITED STATES

(continued)

<u>States Represented</u>	<u>1990</u>	<u>1991</u>	<u>1992</u>	<u>1993</u>
Louisiana	5	12	1	3
Maine	3	2	0	2
Maryland	10	11	8	7
Massachusetts	5	4	2	3
Michigan	20	16	6	9
Minnesota	11	13	3	2
Mississippi	1	3	0	0
Missouri	17	15	5	12
Montana	21	24	7	5
Nebraska	2	1	2	2
Nevada	34	52	44	39
New Hampshire	1	2	2	1
New Jersey	9	15	4	8
New Mexico	28	34	22	10
New York	21	20	18	9
North Carolina	7	6	6	5

GEOGRAPHIC ORIGIN OF STUDENTS

FALL 1990-1993

UNITED STATES

(continued)

<u>States Represented</u>	<u>1990</u>	<u>1991</u>	<u>1992</u>	<u>1993</u>
North Dakota	1	0	0	2
Ohio	16	22	13	6
Oklahoma	8	13	4	5
Oregon	40	54	21	25
Pennsylvania	13	17	3	5
Puerto Rico	13	7	4	4
Rhode Island	1	0	0	0
South Carolina	9	16	3	8
South Dakota	24	3	0	1
Tennessee	12	8	8	9
Texas	53	60	16	27
Utah	6268	6808	8452	9298
Vermont	2	1	1	0
Virgin Islands	1	1	0	0
Virginia	16	6	21	10
Washington	92	92	52	36

GEOGRAPHIC ORIGIN OF STUDENTS

FALL 1990-1993

UNITED STATES

(continued)

<u>States Represented</u>	<u>1990</u>	<u>1991</u>	<u>1992</u>	<u>1993</u>
West Virginia	2	5	2	1
Wisconsin	10	6	3	3
Wyoming	26	31	8	10
Total	7624	8239	9283	9946

CITIZENSHIP OF STUDENTS - FALL 1993



Source: Utah Valley State College, Office of Institutional Research and Strategic Planning

CITIZENSHIP OF FOREIGN STUDENTS Fall 1990-1993

<u>Countries Represented</u>	<u>1990</u>	<u>1991</u>	<u>1992</u>	<u>1993</u>
Angola	0	0	0	1
Argentina	4	7	10	5
Austria	1	0	0	0
Australia	3	5	5	2
Barbados	0	1	1	2
Belgium	3	4	1	1
Belize	0	1	0	0
Bolivia	3	4	3	3
Brazil	6	7	5	5
Bulgaria	0	0	1	2
Cameroon	1	1	0	0
Canada	41	51	56	42
Chile	4	5	4	2
China	0	2	6	1
Columbia	2	0	0	0
Costa Rica	4	5	3	2
Denmark	2	1	1	1
Dominican Republic	0	5	5	6
Ecuador	7	1	4	4
El Salvador	1	2	2	2

CITIZENSHIP OF FOREIGN STUDENTS

Fall 1990-1993

(continued)

<u>Countries Represented</u>	<u>1990</u>	<u>1991</u>	<u>1992</u>	<u>1993</u>
England	3	4	4	3
Finland	0	0	1	0
France	1	2	1	1
Germany	5	5	2	5
Grenada	1	4	1	0
Guatemala	1	2	9	3
Haiti	1	1	1	1
Honduras	0	7	8	5
Hong Kong	6	7	10	11
India	5	1	0	1
Indonesia	6	7	0	1
Iran	1	1	0	0
Israel	0	2	0	0
Italy	4	2	0	1
Jamaica	1	1	1	2
Japan	51	64	86	98
Jordan	0	0	3	1
Korea	2	4	16	15
Kuwait	1	2	0	0

CITIZENSHIP OF FOREIGN STUDENTS

Fall 1990-1993

(continued)

<u>Countries Represented</u>	<u>1990</u>	<u>1991</u>	<u>1992</u>	<u>1993</u>
Lebanon	0	0	1	1
Malaysia	2	1	0	1
Mexico	13	15	30	14
Morocco	1	1	0	0
New Caledonia	0	1	0	0
New Zealand	1	1	0	0
Nicaragua	0	1	0	0
Nigeria	0	0	0	2
Norway	0	0	2	1
Panama	1	2	6	2
Paraguay	0	1	0	0
Peru	7	5	4	1
Philippines	1	0	1	2
Poland	0	0	1	1
Portugal	2	1	0	1
Scotland	1	1	0	1
Singapore	1	0	1	3
South Africa	1	1	0	2
Soviet Union	0	0	1	0
Spain	3	2	5	2

CITIZENSHIP OF FOREIGN STUDENTS

Fall 1990-1993

(continued)

<u>Countries Represented</u>	<u>1990</u>	<u>1991</u>	<u>1992</u>	<u>1993</u>
Sri Lanka	0	1	0	0
Sudan	1	0	0	0
Sweden	2	1	4	2
Switzerland	2	2	2	4
Taiwan	14	10	16	16
Thailand	14	2	7	8
Togo	1	0	0	0
Tonga	1	1	0	0
Uganda	2	1	0	0
United Arab Emirates	0	1	0	0
Uruguay	0	0	1	0
Venezuela	6	6	4	0
Vietnam	1	0	1	1
West Indies	4	7	3	2
Western Samoa	1	0	0	0
Zaire	1	1	0	0
TOTAL	255	284	330	306

Source: Utah Valley State College, Office of Institutional Research and Strategic Planning

GRADUATE DEGREES & CERTIFICATES AWARDED 1991-1992 and 1992-1993 School Years

	<u>1991-92</u>	<u>1992-93</u>
Associate of Science	331	388
Associate of Science in Nursing	38	36
Associate of Arts	47	53
Associate in Applied Science	314	342
Diploma	34	35
One-Year Certificate	156	143
Two-Year Certificate	0	0
TOTAL	920	997

CONTENTS

SUPPORT ORGANIZATIONS

Faculty Senate Presidents	73
Ace/Pace Presidents	73
Utah Valley State College Foundation Board, 1993-1994	74
Utah Valley State College Foundation Board Members, 1993-1994	75
Utah Valley State College Alumni Association Board of Directors, 1993-1994	76
Advisory Committees, Accounting, Air Conditioning and Refrigeration Technology, Automotive Technology, Aviation Science, Building Construction & Construction Management, Building Inspection, Business Management,	77
Advisory Committees, Cabinetry and Architectural Woodwork, Child Education & Family Studies, Collision Repair, Computer Science & Information, Culinary Arts, Diesel Mechanics, Drafting	78
Advisory Committees, Education, Electrical Automation, Electronics & Computer Technology, Environmental Technology	79
Advisory Committees, Fashion Merchandising, Finance and Banking, Fire Science, Graphics Commercial Art, Hospitality Management	80
Advisory Committees, International Business, Legal Assistant, Lineman Technology, Machine Tool Technology, Nursing	81
Advisory Committees, Office Technology Administration, Physical Plant Management, Professional Driving, Welding	82

CONTENTS

SUPPORT ORGANIZATIONS (continued)

Clubs and Organizations, Alpha Kappa Epsilon, Campus Venture, CAS-CASP, Chess, Cogito Ergo Pingo . . .	83
Clubs and Organizations, Computer Club, DEX, Drafting Club, Ecumenical College Fellowship, Environmental	84
Clubs and Organizations, French Club, GAIA, Game Club, German Club, Health Awareness, Hewlett Packard	85
Clubs and Organizations, IMA, Intercollegiate Knights, International Student Club, Jipang, Karate, Korean . . .	86
Clubs and Organizations, Lambda Delta Sigma, LAUSA, Law Society, LDSSA, Math, MIDImuse	87
Clubs and Organizations, Native American Student Club, Outdoor Recreation, Phi Beta Lambda, Phi Theta Kappa, Polynesian Club	88
Clubs and Organizations, Progressive Club, Racquetball, Rainbow Club, Rodeo Club, Russian Club, Sigma Gamma Chi,	89
Clubs and Organizations, Ski Club, Soccer, Spanish Club, Student Alumni, Student Literary Publications Club, Synergy	90
Clubs and Organizations, VICA, USU/UVSC IMA, Utah Valley Collegiate Aero Club, Utah Valley Cyclists, UVSC Ballroom Dance Company, Western Dance Club	91
Clubs and Organizations, Women's Connection	92

FACULTY SENATE PRESIDENTS

1976-77	Stephen M. Trane	1985-86	Larry B. Marsing
1977-78	Stephen L. Adams	1986-87	F. Dennis Farnsworth
1978-79	Douglas E. Warner	1987-88	Barbra Ann Hoge
1979-80	Russell C. Black	1988-89	Orrin A. Nelson
1980-81	Robert F. Steele	1989-90	J. D. Davidson
1981-82	Kenneth M. Foster	1990-91	Bonnie G. Henrie
1982-83	J. D. Davidson	1991-92	Del Shumway
1983-84	Wesley M. Bitters	1992-93	Douglas Bradley
1984-85	Kenneth M. Foster	1993-94	D.J. Rowley

Source: Utah Valley State College, Faculty Senate Minutes

ACE/PACE PRESIDENTS

1982-83	ACE	Michael H. Johnson	1988-89	PACE	Thomas R. Rasmussen
1983-84	ACE	Barbara Dabling	1989-90	PACE	Noel C. Lyman
1984-85	ACE	Duane Jacobs	1990-91	PACE	Michael V. Jacobsen
1985-86	ACE	Lucile M. Steele	1991-92	PACE	Leah J. Holt
1986-87	ACE	Linda L. Makin	1992-93	PACE	Michael L. Jones
1987-88	PACE	Evan A. Frampton	1993-94	PACE	Tara Yates

Source: Utah Valley State College, Office of Institutional Research and Strategic Planning

UTAH VALLEY STATE COLLEGE FOUNDATION BOARD
1993 - 1994

Bill J. Anderson
Dick Chappell
Louise Clyde
Stanley E. Collins
Ronald J. Dallin
David D. Halladay
Greg Nelson
Renee Nelson, Secretary
H. Don Norton, Treasurer
David W. Reeves
Kerry D. Romesburg
Neal Savage
Marlon O. Snow, Chairman
LaVorn G. Sparks, Vice-Chairman
Martin A. Nielsen

Business Consultant
UVSC
Retired
Smith Barney Shearson
Storehouse Markets
First Security Bank of Utah
Magnetic Research, Inc.
The Daily Herald
Far West Bank
Beneficial Life Insurance
UVSC
Savage Brothers
MST Trucking, Inc.

UVSC

UTAH VALLEY STATE COLLEGE
FOUNDATION BOARD MEMBERS
1993 - 1994

G. William "Bill" Aaron
Merrill Bushnell
Wilford W. Clyde
David Gunther
Ron Hawkins
J. Marvin Higbee
Doug Horne
Jeff Kahn
Norm Nielsen
David Palfreyman
Florence B. Ragan
Wilson W. Sorensen
Paul Sybrowsky
Maria Vargas
Hal Wing
Steve Winn

Merrill Lynch
Century 21 Bushnell Realty
Geneva Rock
Merrill Lynch
Hawkins, Borup, Cloward
Jostens Learning
Horne's Lodging Properties
First Security Bank
SCERA Corporation
Central Bank & Trust

DYNIX, Inc.
Hard Disk Cafe
Wing Enterprises, Inc.
Mr. Mac's

UTAH VALLEY STATE COLLEGE
ALUMNI ASSOCIATION BOARD OF DIRECTORS
1993 - 1994

William A. Brown, President
Blake Buhler
Sheila Christensen, Treasurer
Geri Clements, President Elect
Brent J. DeMille
Kerry Graves
David D. Halladay
Terry Ann Harward
Stephen Hatch
Heidi Hess
Jeffrey Kahn
Randy S. Kester
Phil Mock
Greg Nelson, Past President
Tom Rasmussen
Jon W. Startup
Lisa Warner

Business: Pepsi Cola/7-Up Bottling Company
NOAH

Mansell & Associates Realty
Service Master
First Security Bank

UVSC - Student Body President
Brigham Young University
First Security Bank
Attorney at Law
IBM
Magnetic Research, Inc.
UVSC - Computer Center
Startup Candy Company

ADVISORY COMMITTEES

1993 - 1994

Accounting

Joe Squire - Chairman
Lois Anderson
Steve Densley
Diane Hicken
Dr. Dee Hubbard
Gene Hughes
C. Joseph Rowberry
Mercedes Smith
Lewis Tippetts
Kelly Ward

Air Cond & Refrig Technology

Gaylen Atkinson
Richard Carmen
Thoral Collings
Randy Farnworth
Dean Gunther
Bob Remund

Automotive Technology

Chuck Barber
Chris Bassett

Automotive (cont)

Phil Crockett
Melvin Ferguson
Clay Liston
Jim MacFarland

Aviation Science

Bruce Carter
Lowell Call
Claude LePendou
Jim Mathis
Richard Nye
Steve Snelson
Debbie Valline

Building Const & Const Mgt

Russ Berry
John Dester
Bill Fairbanks
Robert Hansen

Building Inspection Tech

Roger Evans

Building Inspection (cont)

Paul Hayward
Chuck Hugo
Frank Robinette
Greg Sauter
Alicia Timm
Jerry Wray

Business Management

Randy Armstrong
Scott Baird
T. J. James
Ken Fakler
Rob Kallas
Neil Larson
Brad Mortenson
Mark Olson
Jon Startup
Bryce Taylor

ADVISORY COMMITTEES

1993 - 1994

(continued)

Cabinet & Archit Woodwork

Jon Fondell
Dennis Hardcastle
Markay Johnson
Michael Marcum

Child Ed./Family Studies

Rudy Anderson
Ann Austin
Harvey Hirschi
RoniLynn Jenkins
Kathy Luke
Ireta Midgley
Luana Searle
Anita Spainhower
Sterling Swensen
Cheryl Wright

Collision Repair Technology

Lee Bellows
Bruce Keetch
Lee Mackey

Collision Repair (cont)

Robin Roberts
Steve Whitlock

Computer Science & Info
Systems

Richard Hodson - Chairman
Lois Anderson
Alan Ashton
Elaine Bonham
Richard Bradford
Steve Carter
Alan Dixon
Lee Murdock
Brett Parkinson
Norm Wright

Culinary Arts

Kim Anderson
Tracy Erdmann
Wayne Griffin
Rico Renzetti

Culinary Arts (cont)

Glen Sandberg
Len Thompson
Marilyn Thorne
Mark Steaner

Diesel Mechanics Technology

Kurt Burningham
John Crandall
Ron Dallinga
Albert Harmer
Don Jones
Ernest Parkin

Drafting Technology

Mechanical Drafting

Jerry Barker
Ephraim J. Escamilla
Bryan L. Jacobson
Mike Kipp
Dan Olson

ADVISORY COMMITTEES

1993 - 1994

(continued)

Surveying

Larry Buss
Donald C. Cole
Clyde Naylor
John Stahl
Al York

Structural Drafting

Terry L. Beighley
David Patten
Max Powell

Architectural Drafting

Guilford Rand
Lee C. Knell
Eric Sandstrom
George Olson
David Markham

Education

Rudy Anderson
Ann Austin

Education (cont)

Kathy Luke
Luana Searle
Anita Spainhower
Sterling Swenson
Cheryl Wright

Elect Auto Technology

Ken Colovich
Bernard Cope
Allen Ferreira
Rulon Wells

Electronics & Computer Technology

Tony Coates
Mel Crouch
John Ellsworth
Bill Gillman
John Greenhalgh
Mark Hoyt

Electronics (cont)

Gary Maag
Dick Morrell
Richard Ohran
David Owen
Peter Underlin

Environmental Technology

Gordon Beals
Travis Black
Brent Bradford
Kenneth Bullock
Willard DeVault
David Gunn
Chris Horting
Charles Jeffs
Garland Mayne
Jay Pitkin
Judy Sims
Gayle Smith
Neil Taylor

ADVISORY COMMITTEES

1993 - 1994

(continued)

Fashion Merchandising

Jerry Christopherson
Diane Downs
Donna Judson
Jana Linnell
Dave Nielsen
Sheryl Sharp
Ron Sumner
Laurie Vukich
Chris Wightman

Finance & Banking

Andy Anderson
Scott Cartwright
Leonel Castillo
Richard Hillam
Nanette Lassen
Larry Schlappi
David Wakefield

Fire Science

Scott Adams
Ralph Anderson
Dave Bentley
Lynn Borg
William Feeney
Lorayne Frank
Andrew Glad
Brent Haliday
D. Pete Hansen
Robert Headman
Larry Hinman
Bill Leavitt
Shirl Maxfield
John Williams

Graphics/Commercial Art

Sterling Anderson
Jeff Beil

Graphics (cont)

Steve Bushman
Joanne Froelich
Stephen A. Hales
Wayne Harwood
Steve Keele
Todd Purser
Lynn Roundy
Mike Whitehead

Hospitality Management

Owen Black
John Bramwell
Sam Brooks
John Warner

ADVISORY COMMITTEES

1993 - 1994

(continued)

International Business

Greg Crandall
Edmond Dosch
Barbara Everett
Lloyd Hansen
Malan Jackson
Randy Lindstrom
David Pearson
Kent Pinney
Lee Radebaugh
Stan Reese
Barry Thompson

Legal Assistant

Renee Allan
Donna Barrett
David Bradford
Maxine Bullett
Carol Elggren
Gary Hill
Beth Kearsley

Legal (cont)

Barbara Ochoa
Bill Orton
Marilu Peterson
Peter Reynolds
Honorable David Sam
Layne Sisk
Marie Smith

Lineman Technology

Dean Cordner
Doug Gadd
Karl Jones
Rick Marchal
Lyle Powell
Brent Thomas

Machine Tool Technology

Max Healy
Jim King
Howard Knight
Danny Olsen

Nursing

Linda Barlow
Betty Bigler
Donna Cartwright
Lee Duke
Jo Nielson
Lane Pedersen
Sandy Rogers

ADVISORY COMMITTEES

1993 - 1994

(continued)

Office Tech & Administration

Lorena Aiken
Rex Barrington
Noma Bowman
Lana Anderson Clements
C. Garn Coombs
Susan Corson
Marcia Fluharty
Maralyn Harmstron
Nellie Jensen
Jerry Ann Lance
Carolyn Lloyd
LuAnn Oakes
Loralee Pearson
Becky Peterson
Robert Rose

Physical Plant Management

Lynn Brough
Marshall Leach
Phil Lott
Don Underwood
Mark Woods

Professional Driving

Dick Allen
Ricky Bryan
Randy Hutchings
Ted Lockhart
LeRoy Ownbey
Ward Perry
Reed Reeve
Lynn Thompson
Pam Woodward

Welding Technology

Nile Christofferson
Kevin Kessler
Max Knight
Ron Noyes
Clark Olsen
Robert Patch
Robert Max Walker

CLUBS AND ORGANIZATIONS 1993 - 1994

ALPHA KAPPA EPSILON (CLUB MED) The purpose of CLUB MED is to promote academic excellence in pre-medical students and those interested in any other medical branch. Advisor: Gordon Garrett

CAMPUS VENTURE To introduce students to Jesus Christ and to help them develop a relationship with Him. To develop a Christ-centered world view based upon an evangelical interpretation of the Bible and to provide an inter-denominational atmosphere. Advisor: David Porter

CAS-CASP The organization is to provide International and American students of UVSC the opportunity to learn more about different countries of the world and their unique cultures especially those from Central America and the Caribbean. Advisor: Malan Jackson

CHESS This club provides an outlet for those who enjoy this strategic game. It provides a chance to sharpen skills and compete with other chess players. Advisor: D.J. Smith

COGITO ERGO PINGO "I think, therefore I paint". The purpose is to enhance opportunities in visual arts by expanding individual and social development with professionals and peers in the visual arts field. Open to anyone interested in aesthetics. Advisor: Verl Morgan

CLUBS AND ORGANIZATIONS

1993 - 1994

(continued)

COMPUTER CLUB This club provides the opportunity for students to update their computer skills. Advisor: David Tobler

DEX Delta Epsilon Chi, a division of DECA, is a program centering around professional activities such as marketing, management, merchandising, and hospitality. The purpose is to provide real life experiences found in real life situations. Advisor: Karen Green

DRAFTING CLUB This club promotes activities and social contact with other schools and professionals in the field. They provide tours to public companies and guest speakers for the purpose of professional and social development of the member. Advisor: Darin Taylor

ECUMENICAL COLLEGE FELLOWSHIP This club offers students Christian, spiritual and social assistance in the form of programs, discussions, and other activities. Advisor: Ann Miller

ENVIRONMENTAL CLUB What more can be said about this club except it is here to make students more aware of our depleting environment. Advisor: Jim Harris

CLUBS AND ORGANIZATIONS

1993 - 1994

(continued)

FRENCH CLUB To teach and acquaint students with the French Speaking world and their culture and customs.

Advisor: Fred Silvia

GAIA To develop a bio-aesthetical approach, that is any and all processes dedicated to the harmonic expressions of mans' relationship to the environment, through fostering of "geomancy" or the discussion of self, environmental and inter-species, through artistic expression, and development of awareness.

Advisor: Jim Harris

GAME CLUB To supply the opportunity for students to play different games. Advisor: Curtis Pendleton

GERMAN CLUB Experience cultural activities related to the German language. This is a great club to join if you speak a little German or none at all, but enjoy participation in German cultural events. Advisor:

Rudy Lehnhardt

HEALTH AWARENESS KLUB (HAWK) Educate students about substance abuse and prevention. We provide activities to participate in that don't include alcohol and other drugs.

HEWLETT PACKARD To bring HP handheld calculator users together for mutual benefit with the exchange of information, ideas, and improved usage skills. Advisor: Harvey Mecham

CLUBS AND ORGANIZATIONS

1993 - 1994

(continued)

- IMA** Institute in Management Accountants - First and second year students. Advisor: Karin Darais
- INTERCOLLEGIATE KNIGHTS** This is a branch of the National Honorary Service Fraternity. Members participate in a variety of service projects. Advisor: Malan Jackson
- INTERNATIONAL STUDENT CLUB** The purpose is to foster fraternity and cultural integrity among the international students through social and cultural activities at UVSC. Advisor: Malan Jackson
- JIPANG** Offering mutual improvement and cultural gathering for Japanese, Japanese speakers, and those who are interested in Japan and Japanese culture. Advisor: Malan Jackson
- KARATE CLUB** The main purpose of this club is to help club members learn the mental, physical and spiritual aspects of Kenpo Karate. This club is for those who would like to develop their skills in karate. Advisor: Doug Anderson
- KOREAN CLUB** To help Korean students fulfill their goals as a student and to help UVSC understand the Korean culture. Advisor: Jong Hwang

CLUBS AND ORGANIZATIONS

1993 - 1994

(continued)

LAMBDA DELTA SIGMA A sorority sponsored by the LDS Church to strengthen women, allowing them to have influence in student affairs, render campus and community services, enjoy wholesome social activities and build lasting bonds of sisterhood. Advisor: Marilyn Smith

LAUSA (Latin American LAUSA) To provide support to the Hispanic minority and other minorities in providing opportunities for them at UVSC and the community. All students are welcome. Advisor: Chuck Foster

LAW SOCIETY Members learn about the law through activities, seminars and working with those already established in the field of law. Improve your chances for success in the real world through knowledge of laws and leadership skills. Advisor: Terri Bingham

LDSSA The goal of the Latter Day Saint Student Association is to bring students unto Christ. This is accomplished by student participation with religious education and student activities which include community service, dances, show choir and many other events. Advisor: Dave Litchford/Scott Anderson

MATH This club is for those who enjoy the outcome of a negative derivative. Advisor: David Brandt

MIDI/muse This club is for those who need a musical diversion in life. It provides a chance to sharpen skills on the synthesizer as well as writing music. Advisor: Monty Georgi

CLUBS AND ORGANIZATIONS

1993 - 1994

(continued)

NATIVE AMERICAN STUDENT CLUB This club is for Native American Students and to expose UVSC Student body to Native American culture. Advisor: Chuck Foster

OUTDOOR RECREATION AND RENTALS Any college organized activity attempting to implement rock climbing rappelling, rafting, or any other outdoor activity in their program is required to go through the Outdoor Recreational Department under the direction of Clay Chivers, located in the Student Center. Such activities require special training and equipment. Because of the high liability of these activities, safety is of the utmost importance. Advisor: Clay Chivers

PHI BETA LAMBDA The purpose is to bring business and education together in a positive working relationship by promoting competition, developing character, teaching leadership and learning to have self-confidence. PBL is the collegiate level of FBLA. Membership is open to all students of this college. Advisor: Colleen Vawdrey

PHI THETA KAPPA The purpose of the club is to recognize and encourage scholarship among two-year college students. Phi Theta Kappa shall provide opportunity for the development of leadership and service; an intellectual climate to exchange ideas and ideals; a lively fellowship for scholars; and the stimulation of interest in continuing academic excellence. Advisor: Mike Falgoust

POLYNESIAN CLUB This is a great club to join if you want to learn about the Polynesian culture or if you have lived it. Advisor: Peter Uluave

CLUBS AND ORGANIZATIONS

1993 - 1994

(continued)

PROGRESSIVE CLUB This club is here to initiate education and activities relating to progressive issues and community service: Advisor: Joseph Grcic

RACQUETBALL This club is provided to sharpen skills of the beginner as well as the intermediate racquetball player. They also compete around Utah. Advisor: Vince Miner

RAINBOW CLUB (ABLE) Advance Awareness, Believe in ourselves, Lend service to community and others, Encourage integration for students and others with disabilities. Membership is not limited to those with disabilities. Advisor: Curtis Pendleton

RODEO CLUB The club competes in college rodeos throughout Utah and Idaho. Enjoy competing together as a team and participating in many other activities outside of rodeo competition. This club is open to anyone who is interested in rodeo whether you ride, rope or just enjoy a great time. Advisor: Steve Trane

RUSSIAN CLUB Cultural activities related to the Russian language are sponsored for those who speak Russian or wish to learn. Advisor: Eberhardt Lehnardt

SIGMA GAMMA CHI A fraternity sponsored by the LDS Church to promote leadership, scholarship, spirituality, service, patriotism and brotherhood. This is a great opportunity to get involved in school affairs and meet people. Advisor: Phil Kresge

CLUBS AND ORGANIZATIONS

1993 - 1994

(continued)

SKI CLUB The ski team gives students the opportunity to ski competitively against other college students. The team placed third in both men's and women's divisions in 1986 and 1987. Weber State, University of Utah, Utah State and Montana State are current competitors. Advisor: Bart Jacobs

SOCCER This gives students the opportunity to build team participation as well as compete against other college students. Advisor: Carl Johnson

SPANISH CLUB The club is designed for students studying Spanish as a second language. The purpose is to organize social/cultural activities, peer tutoring, and study groups. Advisor: Del Shumway

STUDENT ALUMNI REPRESENTATIVE Bridge the gap between students and alumni. Create reasons for interaction of the two groups in ways that will benefit and promote UVSC. Advisor: Dennis Farnsworth, Jr.

STUDENT LITERARY PUBLICATIONS CLUB To provide UVSC students with an opportunity to create and publish personal works of art, graphics, poetry, photography, short stories and narratives in a yearly student magazine. Advisor: Grant Flygare

SYNERGY Synergy allows students interested in dance to develop their skills and also give UVSC student body more depth in the Fine Arts. Advisor: Connie Reynolds

CLUBS AND ORGANIZATIONS

1993 -1994

(continued)

VICA Vocational Industrial Clubs of America is for all trade, industrial, technical and health occupation students. An emphasis is placed on dignity of work, education, fair play and high moral and spiritual standards. Prepare "...for leadership in the world-of-work" through State and National competitions. Advisor: Eldon Greenhalgh

USU/UVSC IMA (Institute of Management Account) To introduce management accounting students planning careers in business. Advisor: Dennis Greer

UTAH VALLEY COLLEGIATE AERO CLUB The purpose is to promote interest in the science of aviation, and increase public awareness of an appreciation for the impact of aviation in our world. Advisor: Mike Falgoust

UTAH VALLEY CYCLISTS The club goal is to raise public awareness of cycling and its benefits. The club wants to improve safety in cycling practices in Utah Valley. Advisor: Bart Jacobs

UVSC BALLROOM DANCE COMPANY It has been said the "Dance is life put to music." Our purpose is to promote ballroom dancing through the education of others, and the building up of the UVSC Ballroom Dance Company. Advisor: David Nelson

WESTERN DANCE CLUB Students enjoy Western Dance and associating with others. Advisor: D.J. Smith

CLUBS AND ORGANIZATIONS

1993 -1994

(continued)

WOMEN'S CONNECTION Personal and Career Development Club for non-traditional students will provide socialization, networking, and help build self esteem. It is especially designed to help students in becoming emotionally and economically self-sufficient and provide a safe environment for growth and learning. Advisor: Betty McMasters

CONTENTS

FINANCE

History of Education and General Operating Budgets and Appropriations 1979-1993	93
History of State Appropriation Per FTE, 1979-1993	94
Education and General Operating Funds Use Expenditure Category, 1993-1994 (pie chart)	95
Education and General Operating Funds Expenditure Purpose, 1993-1994 (pie chart)	96
Education and General Revenue Sources, 1993-1994 (pie chart)	97
History of Education and General Operating Budget and Appropriation 1982-1993 (bar graph)	98
Fuel and Power Expenditures, 1985-1993 (bar graph)	99
Scholarship Activity Report 1992-1993	100
Financial Aid Activity Report 1992-1993	102
Federal, State, and Private Gift Status Report 1992-1993	103
Private Funding, 1991-1993	104

HISTORY OF EDUCATION AND GENERAL OPERATING BUDGET AND STATE APPROPRIATION

<u>Year</u>	<u>Total Budget</u>	State <u>General Fund</u>	<u>Percentage</u>
1979-80	\$7,462,800	\$5,346,500	71.64%
1980-81	\$8,656,400	\$6,206,500	71.70%
1981-82	\$10,281,200	\$7,054,100	68.61%
1982-83	\$11,377,500	\$7,671,400	67.43%
1983-84	\$12,021,700	\$7,997,700	66.53%
1984-85	\$13,854,100	\$9,963,500	71.92%
1985-86	\$15,400,281	\$10,723,475	69.63%
1986-87	\$15,967,752	\$10,716,500	67.11%
1987-88	\$16,796,426	\$11,162,400	66.46%
1988-89	\$17,268,400	\$11,449,800	66.30%
1989-90	\$18,856,800	\$12,370,900	65.60%
1990-91	\$21,319,500	\$13,939,400	65.38%
1991-92	\$23,538,800	\$14,994,600	63.70%
1992-93	\$26,416,500	\$16,121,200	61.03%
1993-94	\$29,663,000	\$17,364,100	58.54%

Source: Utah Valley State College, Budget Office
Excludes supplementals and one-time reductions

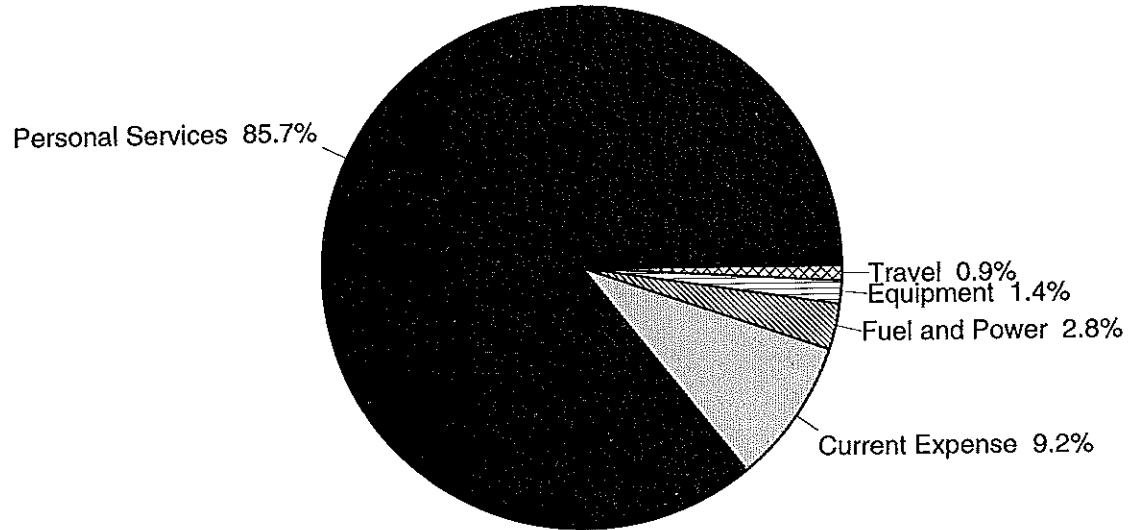
HISTORY OF STATE APPROPRIATION PER FTE*

<u>Year</u>	<u>Base State Appropriation</u>	<u>Annualized FTE</u>	<u>Appropriation Per FTE</u>
1979-80	\$5,346,500	3,250	\$1,645
1980-81	\$6,206,500	3,840	\$1,616
1981-82	\$7,054,100	4,349	\$1,622
1982-83	\$7,671,400	5,035	\$1,524
1983-84	\$7,997,700	5,272	\$1,517
1984-85	\$9,963,500	4,947	\$2,014
1985-86	\$10,723,475	4,899	\$2,189
1986-87	\$10,716,500	5,206	\$2,058
1987-88	\$11,162,400	5,302	\$2,105
1988-89	\$11,449,800	5,329	\$2,149
1989-90	\$12,370,900	5,854	\$2,113
1990-91	\$13,939,400	5,787	\$2,409
1991-92	\$14,994,600	6,732	\$2,227
1992-93	\$16,121,200	7,472	\$2,158

*FTE = Full-time equivalent

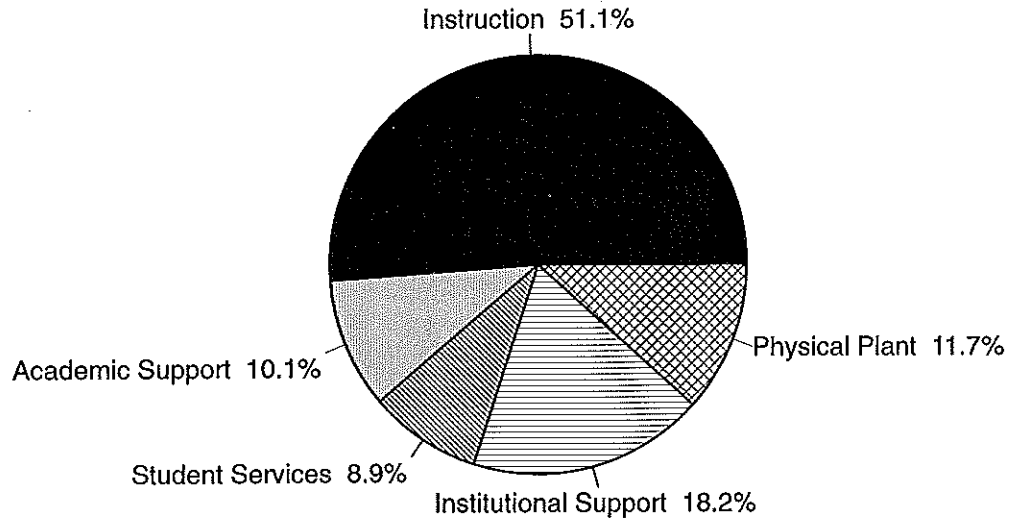
Source: Utah Valley State College, Budget Office

EDUCATION & GENERAL OPERATING FUNDS USE EXPENDITURE CATEGORY 1993 - 1994



Source: Utah Valley State College, Budget Office

EDUCATION & GENERAL OPERATING FUNDS EXPENDITURE PURPOSE 1993 - 1994

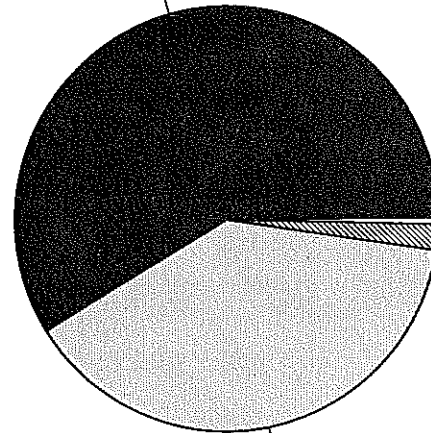


Source: Utah Valley State College, Budget Office

EDUCATION AND GENERAL REVENUE SOURCES

1993 - 1994

State General Fund 58.5%

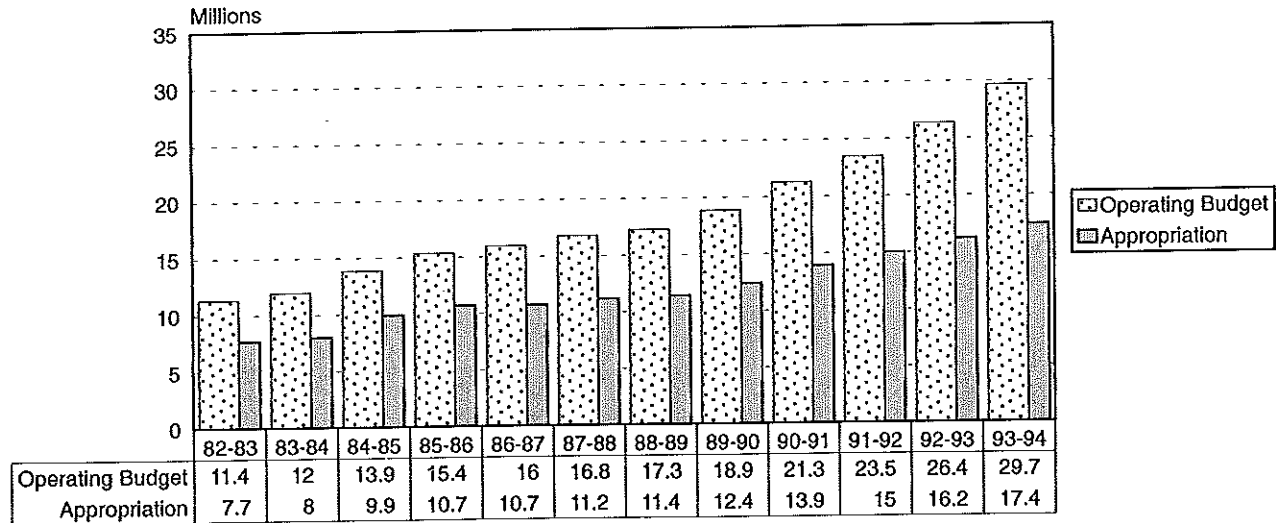


Other 0.5%
Mineral Lease 1.9%

Tuition and Fees 39.1%

Source: Utah Valley State College, Budget Office

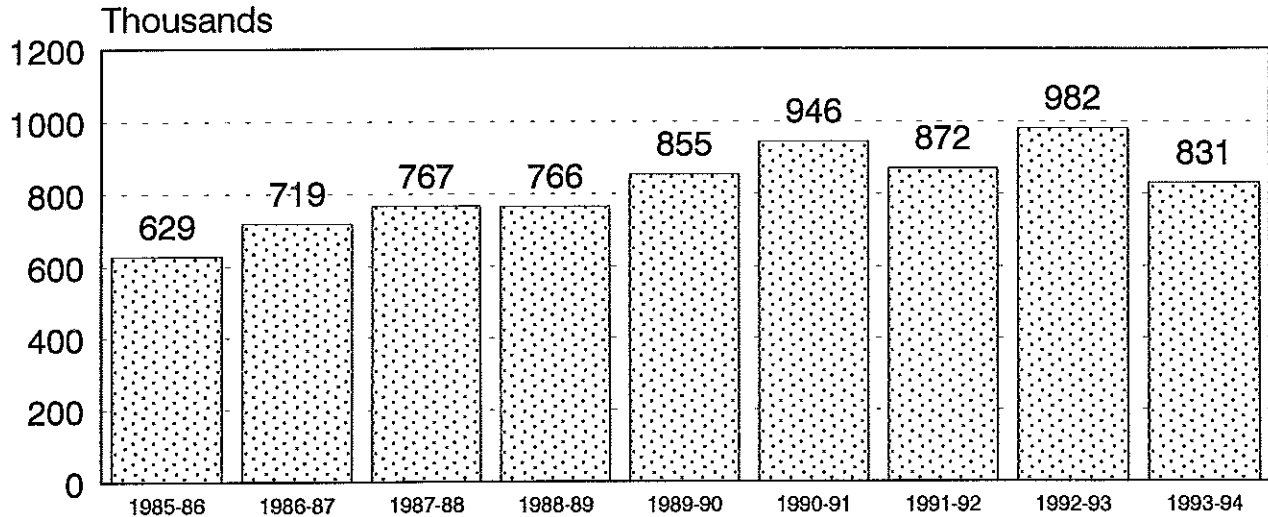
HISTORY OF EDUCATION AND GENERAL OPERATING BUDGET AND STATE APPROPRIATION



Source: Utah Valley State College, Budget Office

FUEL AND POWER EXPENDITURES

(Includes energy projects approved by the Board of Regents)



Budgeted

Source: Utah Valley State College, Budget Office

SCHOLARSHIP ACTIVITY REPORT 1992-1993

<u>Name</u>	<u>Number</u>	<u>Amount</u>
Athletic Non-Resident Waiver	15	22,378.05
Athletic Scholarship	58	20,345.62
Athletic Tuition Waiver	59	50,969.25
B/L Clyde Scholarship	2	1,500.00
Cass Scholarship	29	92,361.00
Crouch Auto Mechanic Scholarship	1	1,800.00
Dean's Discretionary School of Business	24	6,713.00
Dean's Discretionary School of General Studies	21	19,278.00
Dean's Discretionary School of Trades/Technology	17	5,622.75
First-Time Needs Tuition Waiver	29	28,381.50
First-Time Student Tuition Waiver	90	146,601.14
Florence B. Regan Scholarship	2	1,362.00
General Scholarship	1	500.00
Geneva Steel Emp-Scholarship	3	2,597.89
Governor's Vocational Tuition Waiver	17	20,518.25
Greer Nursing Scholarship	12	2,864.75
Gunther Family Scholarship	3	1,499.75

SCHOLARSHIP ACTIVITY REPORT

1992 - 1993

(continued)

<u>Name</u>	<u>Number</u>	<u>Amount</u>
Mac Minority Scholarship	17	13,826.00
Miscellaneous Scholarship	1	535.50
Pearson Trust Scholarship	19	6,258.25
Performing Arts Tuition Waiver	78	50,025.75
PGA Scholarship	5	3,200.00
Pleasant Grove Health Scholarship	1	671.75
Presidential Scholarship	11	8,277.50
Rodeo Scholarship	2	959.25
Second-Year Student Tuition Waiver	42	39,598.64
Special Attainment Tuition Waiver	17	13,698.25
Stouffer Foods Scholarship	2	1,070.00
Student Activities Tuition Waiver	65	54,732.50
Utah Career Teaching Scholarship	10	13,770.75

FINANCIAL AID ACTIVITY REPORT 1992 - 1993

<u>GRANTS</u>	<u>NUMBER OF STUDENTS</u>	<u>AMOUNT</u>
Pell	3,653	\$5,459,173.30
SEOG	1,401	224,136.50
SSIG	357	100,238.62
<u>LOANS</u>		
Alaskan Loans	6	19,750.00
Canadian Loans	3	4,447.00
Perkins	130	201,839.00
Stafford	1,752	2,794,691.00
Supplemental Loans	89	228,201.00
Short-Term	2,937	1,642,175.00
Miscellaneous	63	427,365.00
<u>EMPLOYMENT</u>		
College Work-Study	129	156,128.46
 TOTAL	 10,520	 \$11,258,144.88

FEDERAL, STATE, AND PRIVATE GIFT STATUS REPORT 1992-1993

Formula	\$194,871	Bamberger Foundation	\$ 2,500
Sex Equity	10,536	Talent Search	173,557
Single Parent	48,939	Child Care	64,000
Tech Prep. Educ IIIE	176,386	Centers of Excellence	10,000
Consumer Home Ec IIIB	3,000	Serving Utah Network	20,500
Community Based Org IIIA	20,000	Tracy Rock Survey	30,000
JTPA	29,003	Browning Foundation	100,000
Displaced Homemakers	1,401	U.S. West	3,500
Flow Thru	50,401	Culligan Water Purification	40,000
Formula Allocation	257,316	Utah Lake Monitor	20,000
Summer Food Service	1,810	Novell	30,000
Displaced Homemakers	43,467	DOE Title III	462,282
Flow Thru	45,675	Environmental Technology	4,000
K-12	5,499	Curricular Ethics Renewal	59,810
Regions not Served by ATC's	95,023	Upward Bound	200,000
SUBTOTAL	\$983,327	SCUP	319,726
		SUBTOTAL	1,539,875
		TOTAL	2,523,202

PRIVATE FUNDING

(Includes Foundations, Corporations, Businesses, and Individuals)

	<u>1991-92</u>	<u>1992-93</u>
UNRESTRICTED:	\$2,745	\$8,000
RESTRICTED:	510,049	316,124
ENDOWMENT:	299,201	141,061
GIFTS IN KIND:	183,675	279,465
TOTAL PRIVATE FUNDING	<u>\$995,670</u>	<u>\$774,650</u>

CONTENTS

FACILITIES

Physical Facilities, Building, Square Feet	105
Physical Facilities, Buildings in Progress	106
Physical Facilities, Priority Requests 1994	107
Physical Facilities, Type of Space	108
Physical Facilities, Square Feet (bar graph)	109
Age of Physical Facilities, Placed in Service, Square Footage	110

PHYSICAL FACILITIES

1993

<u>Building</u>	<u>Gross Square Feet</u>
Activity Center	39,500
Administration Building	81,676
Automotive & Auxiliary Buildings	96,985
Business Building	75,412
Central Plant & Auxiliary Buildings	11,162
Environmental Technology Lab	6,715
Gunther Trades	140,056
Learning Resource Center	91,577
Pioneer House	1,511
Planning Center & Auxiliary Buildings	19,737
Provo Campus	161,590
Science Building	82,482
Student Center	92,023
President's Residence	3,442
Total Square Feet	903,868

'SQUARE FOOTAGE FIGURES ARE APPROXIMATE

PHYSICAL FACILITIES
Buildings in Progress 1993

<u>Buildings in Progress</u>	<u>Gross Square Feet</u>
Physical Education/Special Events Center	109,100
Total Square Feet*	109,100

*SQUARE FOOTAGE FIGURES ARE APPROXIMATE

PHYSICAL FACILITIES

<u>Priority Requests for 1994</u>	<u>Gross Square Feet</u>
Space Utility/Capacity Enhancement	28,825
Physical Plant	52,700
Provo Campus Renovation	161,590
Electronics and Engineering Technology Building	112,800
Total Net Square Feet*	355,915

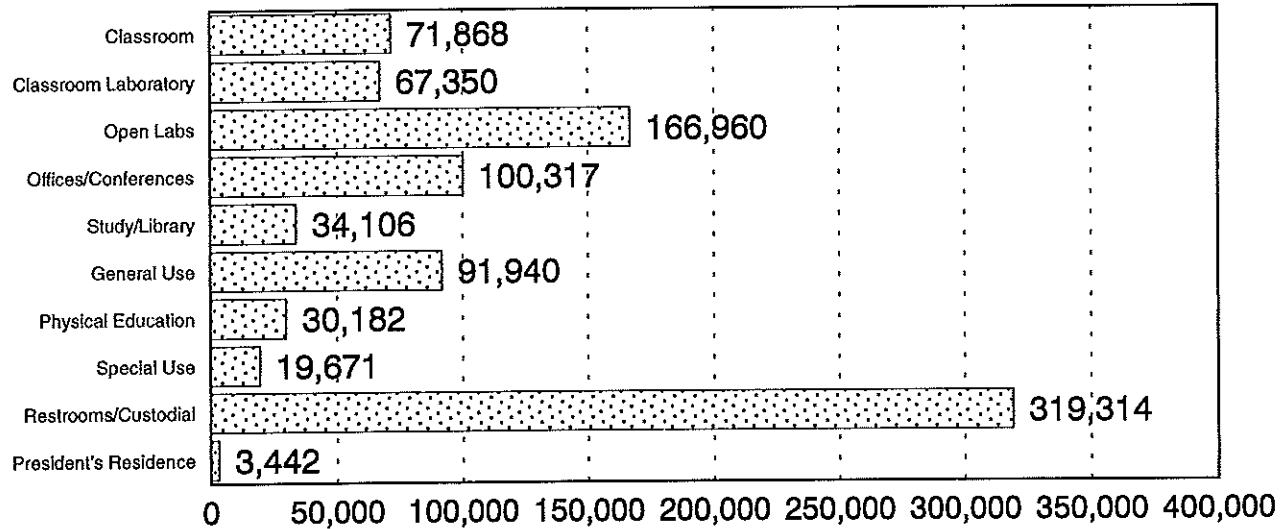
*SQUARE FOOTAGE FIGURES ARE APPROXIMATE

PHYSICAL FACILITIES Type of Space - 1993

<u>Type of Space</u>	<u>Gross Square Feet</u>
Classrooms	71,868
Classroom Laboratories	67,350
Open Labs	166,960
Offices/Conference Rooms	100,317
Study/Library Facilities	34,106
General Use Facilities	91,940
Physical Education Facilities	30,182
Special Use Facilities	19,671
Restrooms/Circulation/Custodial/Mechanical Area/Structural	319,314
Residential	3,442
Total Square Feet	905,150

*SQUARE FOOTAGE FIGURES ARE APPROXIMATE, SPACE INCLUDES "LEASED IN" AND "LEASED OUT" SQUARE FEET, OPEN LAB SPACE IS EQUIPMENT INTENSIVE - NOT VACANT SPACE

PHYSICAL FACILITIES NET SQUARE FEET



FALL 1993

Source: Utah Valley State College, Office of the Vice President of Administrative Services and Planning

AGE OF PHYSICAL FACILITIES 1993

<u>Placed in Service</u>	<u>Square Footage</u>
1950-1959	89,393
1960-1969	74,800
1970-1979	404,275
1980-1989	189,454
1990	23,270
1992	39,780
1993	46,000
 Total Square Footage	 866,972

Source: Utah Valley State College, Office of the Vice President of Administrative Services & Planning

CONTENTS

RESEARCH

GRADUATE FOLLOW-UP	111
What was your primary educational objective when you first enrolled?	112
Did you change this educational objective while at UVCC?	113
What did you change your educational objective to?	114
Have you achieved your ultimate educational objective at UVCC?	115
Do you feel your experiences at UVCC have improved the quality of your life?	116
If you could go back, knowing what you know now, would you still attend UVCC?	117
Would you recommend attending UVCC to your friends and acquaintances?	118
UVCC should have helped you to improve your ability to communicate orally?	119
UVCC helped you to improve your ability to communicate orally?	120
UVCC should have helped you to improve your ability to write well?	121
UVCC helped you to improve your ability to write well?	122
UVCC should have helped you to improve your ability to make good decisions?	123
UVCC helped you to improve your ability to made good decisions?	124
UVCC should have helped you learn to get along better with other people?	125
UVCC helped you learn to get along better with other people?	126
UVCC should have helped you to expand your tolerance for people and ideas?	127
UVCC helped you to expand your tolerance for people and ideas?	128

CONTENTS

RESEARCH (continued)

How satisfied were you with the content of courses at UVCC?	129
How satisfied were you with the quality of instruction at UVCC?	130
How satisfied were you with the usefulness/relevance of training to your current job?	131
How satisfied were you with the career or transfer preparation at UVCC?	132
The semester system suited my schedule better?	133
The learning process was enhanced due to more time in the semester system?	134
I felt I learned more in the semester system?	135
I liked the semester system better?	136
Are you currently taking any classes or training?	137
After graduating from UVCC did you enroll at a 4-year college or university?	138
If UVCC were to become a 4-year school, would you consider returning for a baccalaureate degree?	139
After graduating from UVCC, did you look for a full-time job?	140
Which of the following best describes your current employment situation?	141
How is your job related to the skills you developed at UVCC?	142
Is your current job the first one you have had in this career field?	143
Were you employed in this job before enrolling in the UVCC career program?	144
Did your UVCC degree/certificate help you obtain this job?	145
Gender of respondents?	146
What is your age?	147
Which of the following best describes your annual family income?	148

CONTENTS

RESEARCH (continued)

NEW STUDENT SURVEY	149
What is your student status?	150
How far is your home from UVSC?	151
How did you learn about UVSC?	152
What are your living arrangements?	153
Will you need financial assistance?	154
How many semesters do you plan to attend?	155
Are you a member of a single parent family?	156
Has anyone in your family completed a four-year college degree?	157
If yes, what is the highest degree for your father, mother brother/sister?	158
How many children are in your parents' family?	159
How many hours do you plan to work each week while attending school?	160
What is your approximate family income?	161
How likely are you to pursue a four year degree?	162
If you decide to pursue a four-year degree, where would UVSC rank as an option?	163
If UVSC was not your first choice, please indicate your first choice?	164
Why did you choose to attend UVSC?	165

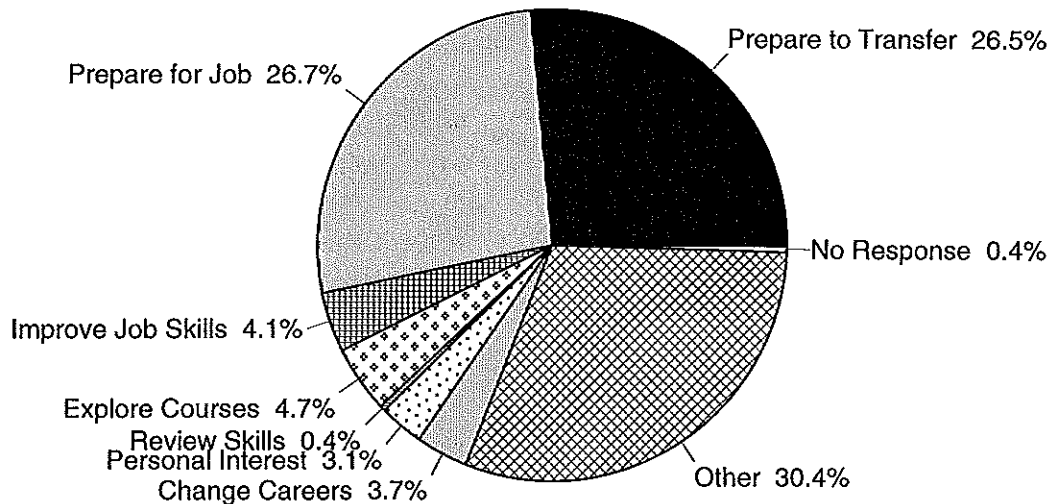
GRADUATE FOLLOW UP

At the completion of each academic year, UVSC graduates are contacted by an independent research firm and asked to respond to an extensive questionnaire about their experiences at UVSC.

During the 1992-93 school year, 53 percent of all 1992 graduates were surveyed and their responses to pertinent questions are shown in the following graphs. The sample included 490 graduate responses.

WHAT WAS YOUR PRIMARY EDUCATIONAL OBJECTIVE WHEN YOU FIRST ENROLLED?

GRADUATE FOLLOW-UP SURVEY 1992

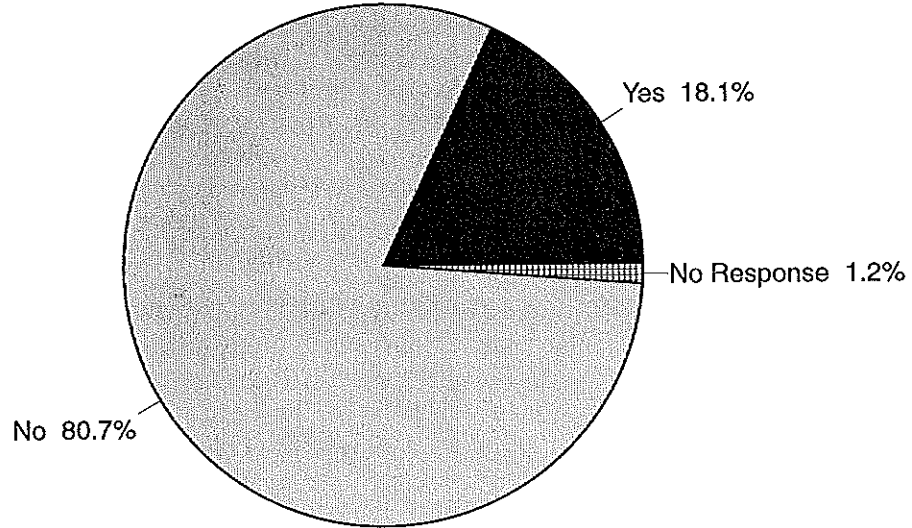


Source: Utah Valley State College, Office of Institutional Research and Strategic Planning

n = 490

112

DID YOU CHANGE THIS EDUCATIONAL OBJECTIVE WHILE AT UVCC? GRADUATE FOLLOW-UP SURVEY 1992

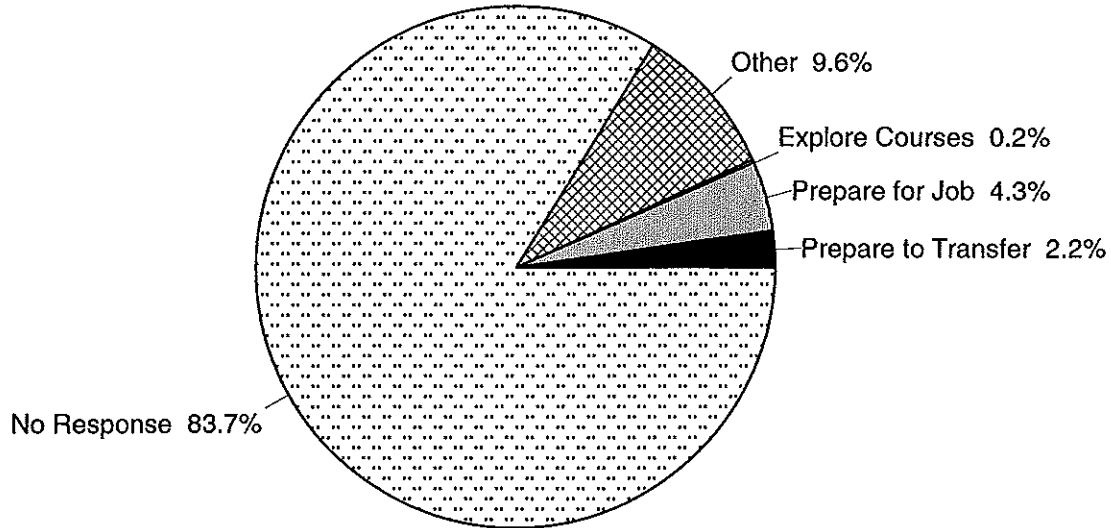


Source: Utah Valley State College, Office of Institutional Research and Strategic Planning

n = 490

WHAT DID YOU CHANGE YOUR EDUCATIONAL OBJECTIVE TO?

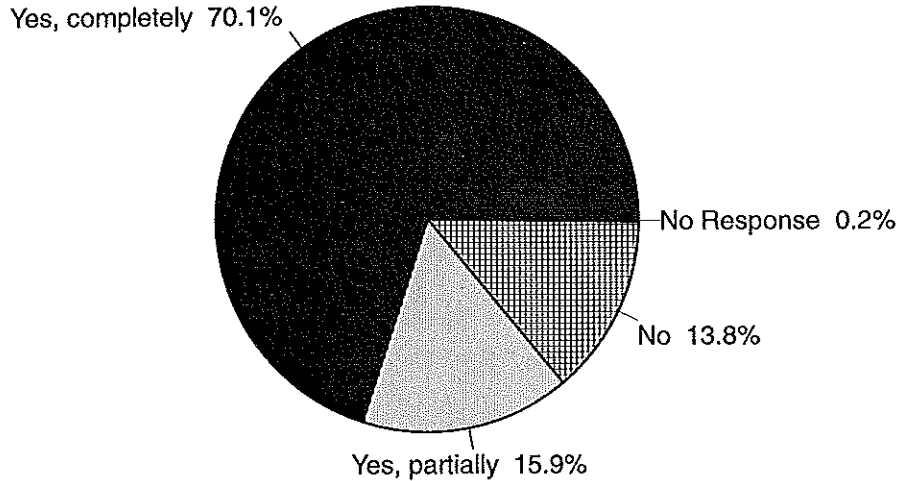
GRADUATE FOLLOW-UP SURVEY 1992



Source: Utah Valley State College, Office of Institutional Research and Strategic Planning

n = 490

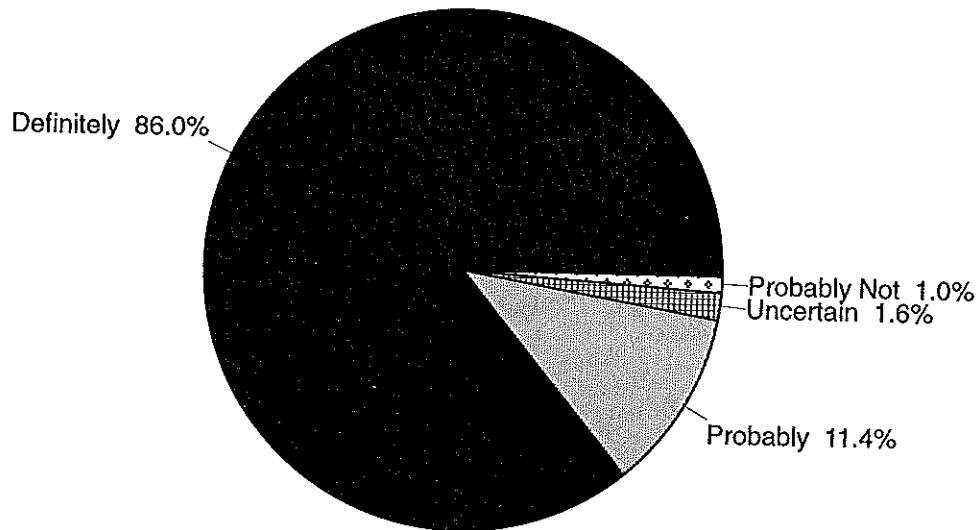
HAVE YOU ACHIEVED YOUR ULTIMATE EDUCATIONAL OBJECTIVE AT UVCC? GRADUATE FOLLOW-UP SURVEY 1992



Source: Utah Valley State College, Office of Institutional Research and Strategic Planning

n = 490

DO YOU FEEL YOUR EXPERIENCES AT UVCC HAVE IMPROVED THE QUALITY OF YOUR LIFE? GRADUATE FOLLOW-UP SURVEY 1992

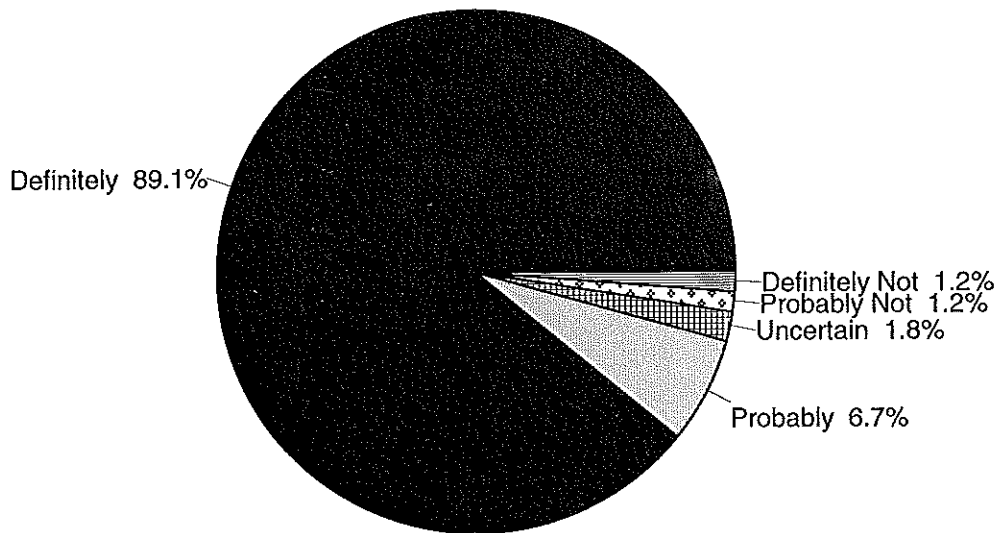


Source: Utah Valley State College, Office of Institutional Research and Strategic Planning

n = 490

IF YOU COULD GO BACK, KNOWING WHAT YOU KNOW NOW, WOULD YOU STILL ATTEND UVCC?

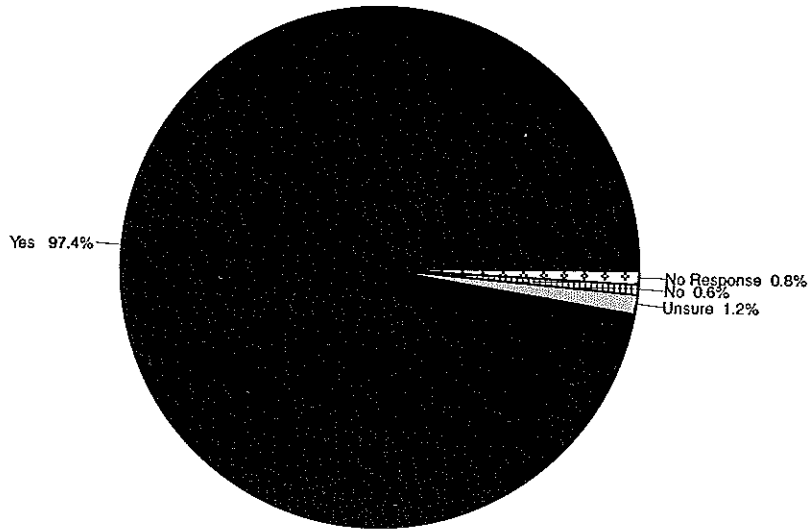
GRADUATE FOLLOW-UP SURVEY 1992



Source: Utah Valley State College, Office of Institutional Research and Strategic Planning

n = 490

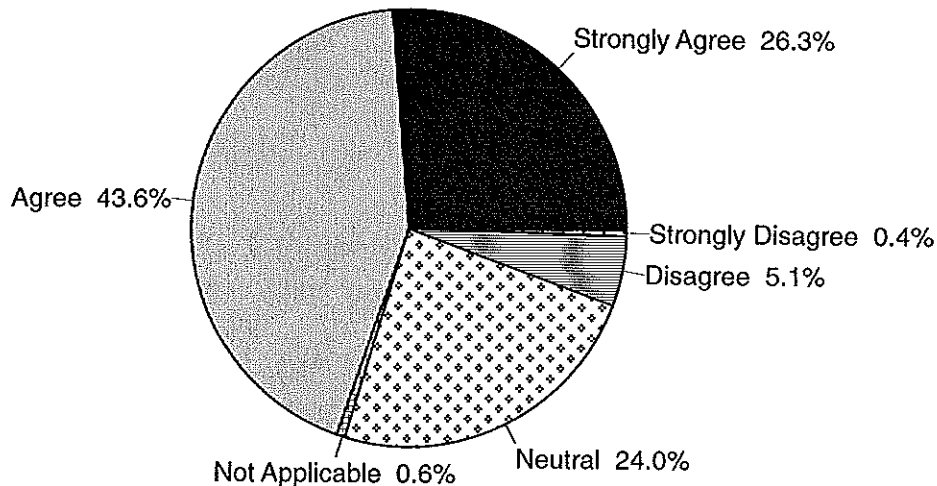
WOULD YOU RECOMMEND ATTENDING UVCC TO YOUR FRIENDS AND ACQUAINTANCES? GRADUATE FOLLOW-UP SURVEY 1992



Source: Utah Valley State College, Office of Institutional Research and Strategic Planning

n = 490
118

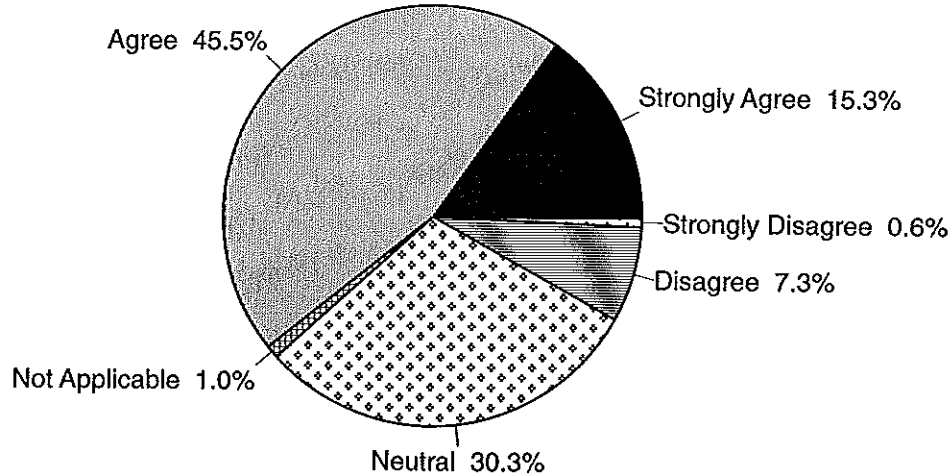
UVCC SHOULD HAVE HELPED YOU TO IMPROVE YOUR ABILITY TO COMMUNICATE ORALLY? GRADUATE FOLLOW-UP SURVEY 1992



Source: Utah Valley State College, Office of Institutional Research and Strategic Planning

n = 490

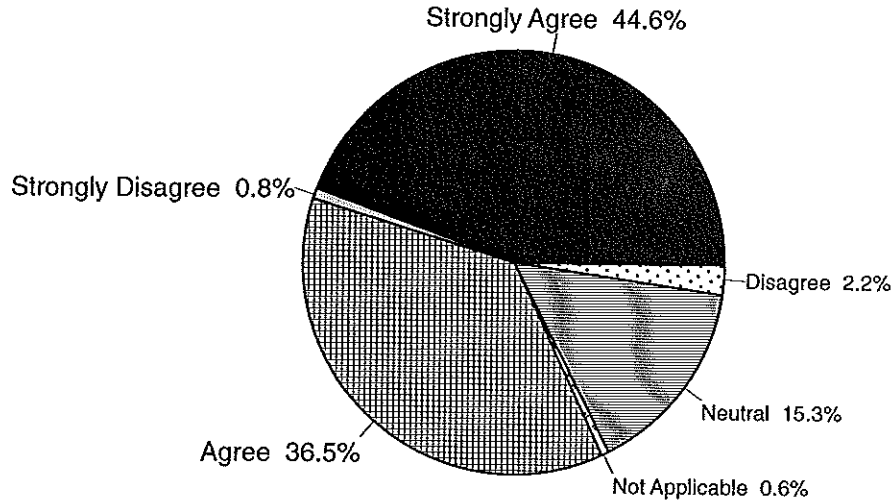
UVCC HELPED YOU TO IMPROVE YOUR ABILITY TO COMMUNICATE ORALLY? GRADUATE FOLLOW-UP SURVEY 1992



Source: Utah Valley State College, Office of Institutional Research and Strategic Planning

n = 490
120

UVCC SHOULD HAVE HELPED YOU TO IMPROVE YOUR ABILITY TO WRITE WELL? GRADUATE FOLLOW-UP SURVEY 1992

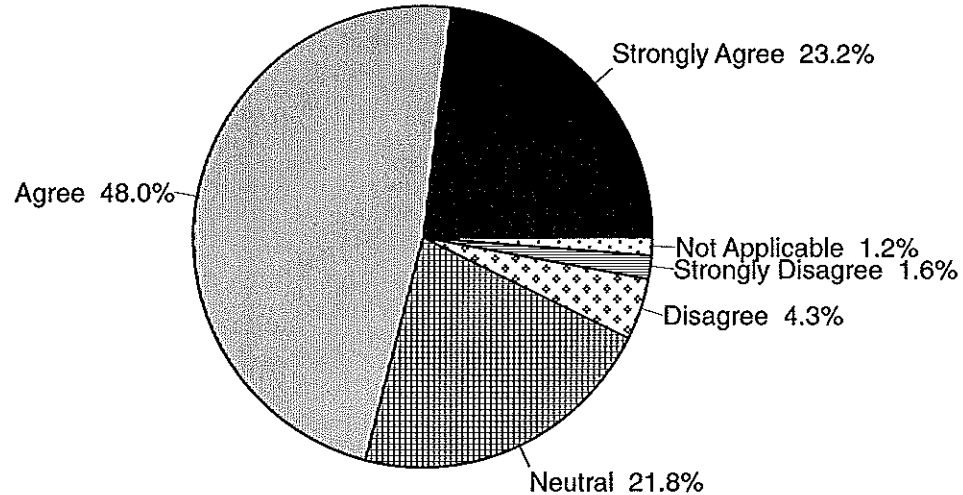


Source: Utah Valley State College, Office of Institutional Research and Strategic Planning

n = 490

UVCC HELPED YOU TO IMPROVE YOUR ABILITY TO WRITE WELL?

GRADUATE FOLLOW-UP SURVEY 1992

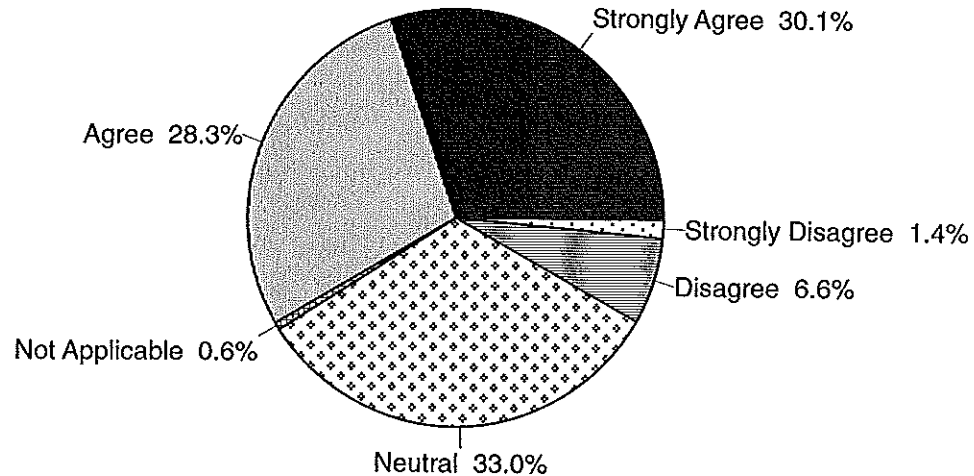


Source: Utah Valley State College, Office of Institutional Research and Strategic Planning

n = 490

122

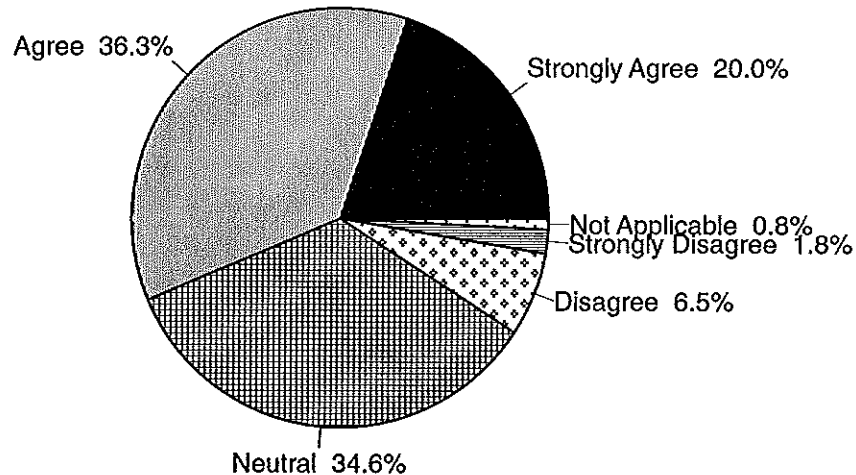
UVCC SHOULD HAVE HELPED YOU TO IMPROVE YOUR ABILITY TO MAKE GOOD DECISIONS? GRADUATE FOLLOW-UP SURVEY 1992



Source: Utah Valley State College, Office of Institutional Research and Strategic Planning

n = 490

UVCC HELPED YOU TO IMPROVE YOUR ABILITY TO MAKE GOOD DECISIONS? GRADUATE FOLLOW-UP SURVEY 1992

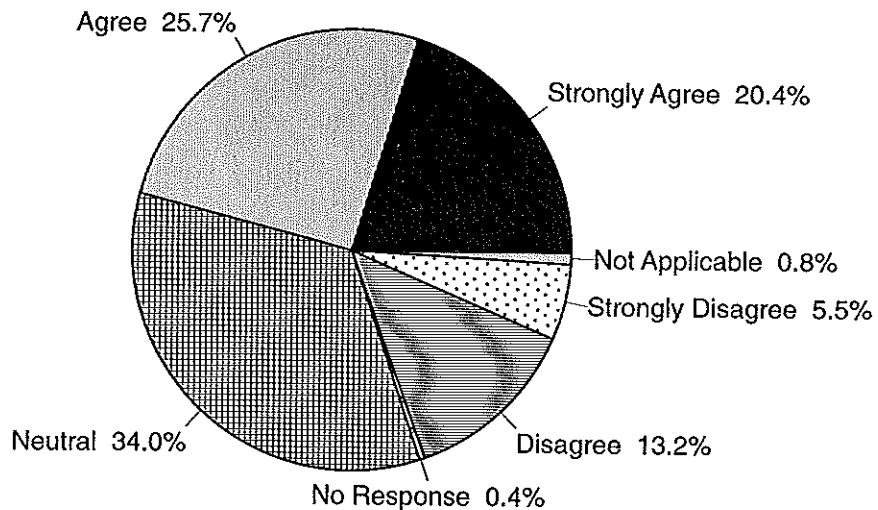


Source: Utah Valley State College, Office of Institutional Research and Strategic Planning

n = 490

124

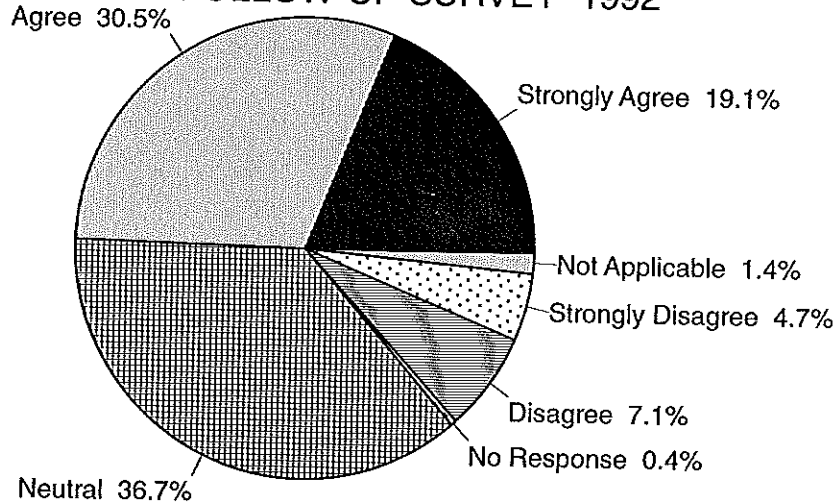
UVCC SHOULD HAVE HELPED YOU LEARN TO GET ALONG BETTER WITH OTHER PEOPLE? GRADUATE FOLLOW-UP SURVEY 1992



Source: Utah Valley State College, Office of Institutional Research and Strategic Planning

n = 490

UVCC HELPED YOU LEARN TO GET ALONG BETTER WITH OTHER PEOPLE? GRADUATE FOLLOW-UP SURVEY 1992

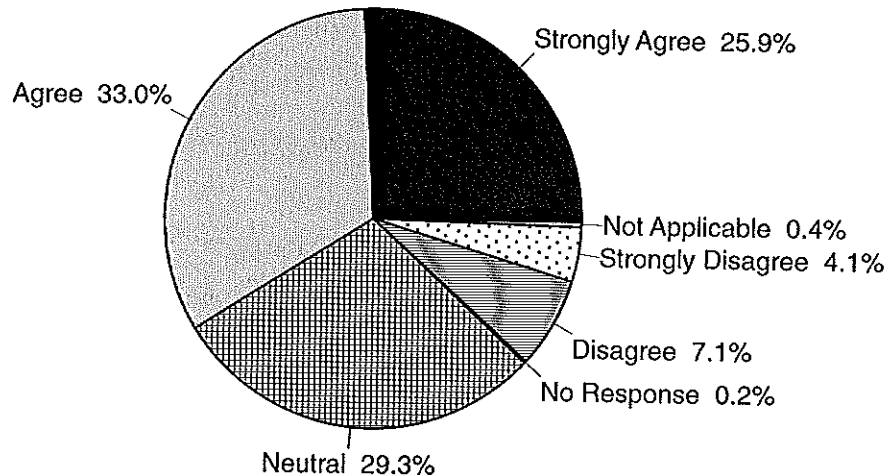


Source: Utah Valley State College, Office of Institutional Research and Strategic Planning

n = 490

126

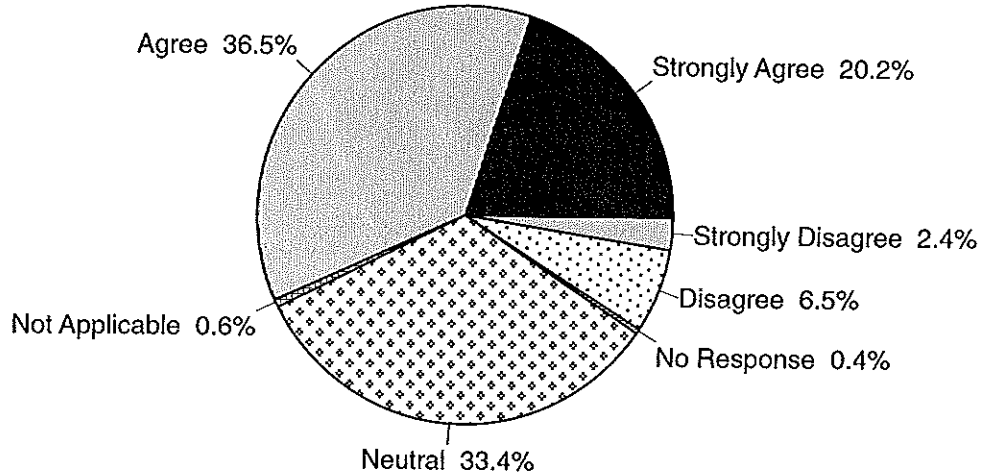
UVCC SHOULD HAVE HELPED YOU TO EXPAND YOUR TOLERANCE FOR PEOPLE AND IDEAS? GRADUATE FOLLOW-UP SURVEY 1992



Source: Utah Valley State College, Office of Institutional Research and Strategic Planning

n = 490

UVCC HELPED YOU TO EXPAND YOUR TOLERANCE FOR PEOPLE AND IDEAS? GRADUATE FOLLOW-UP SURVEY 1992

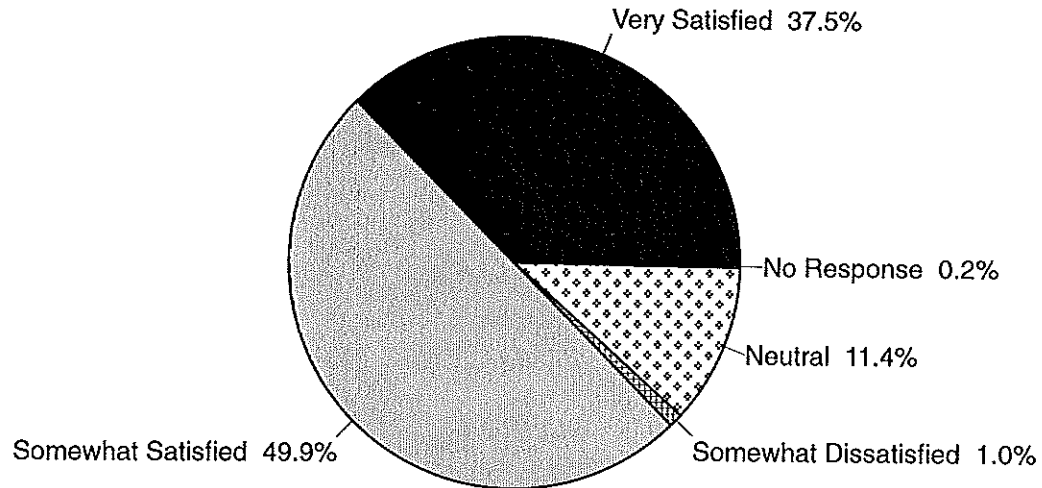


Source: Utah Valley State College, Office of Institutional Research and Strategic Planning

n = 490

128

HOW SATISFIED WERE YOU WITH THE CONTENT OF COURSES AT UVCC? GRADUATE FOLLOW-UP SURVEY 1992

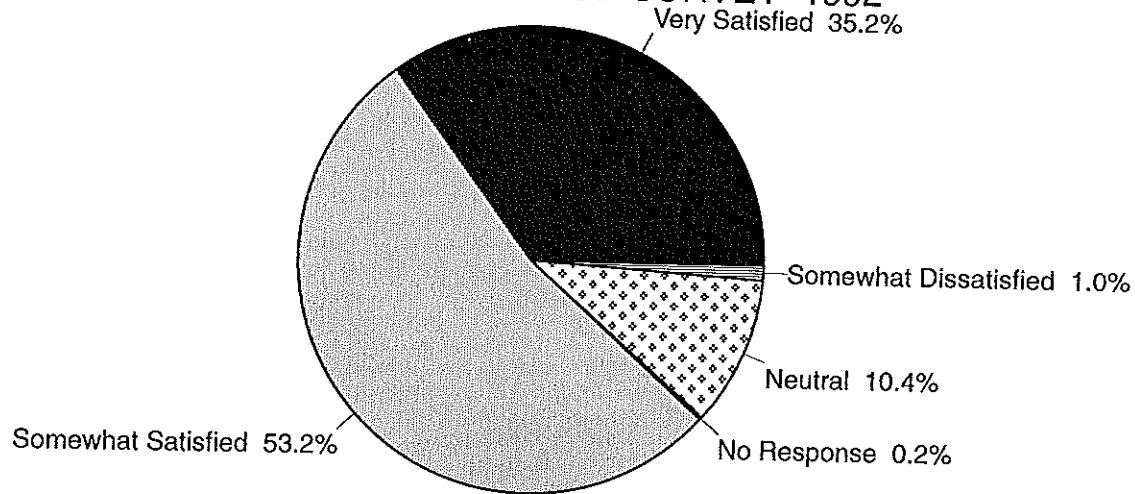


Source: Utah Valley State College, Office of Institutional Research and Strategic Planning

n = 490

129

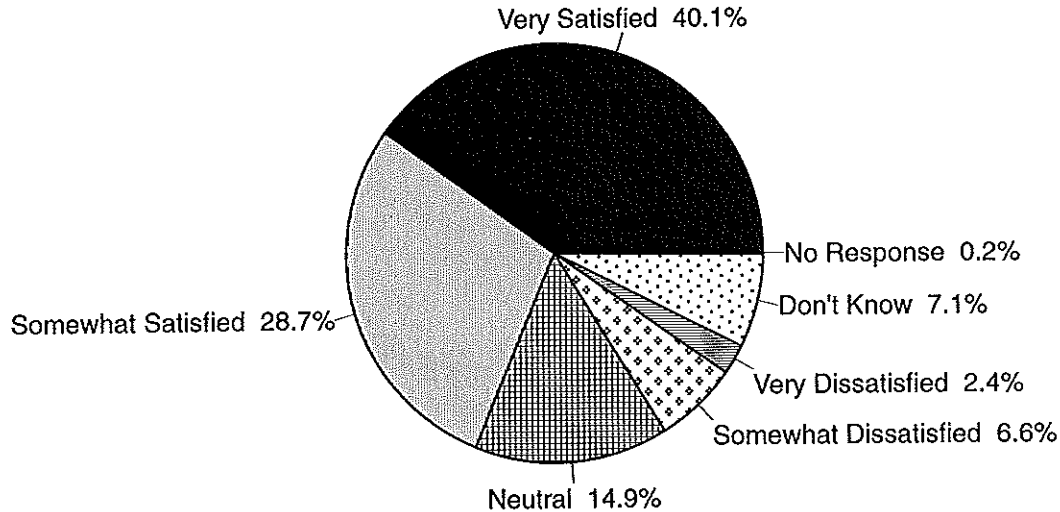
HOW SATISFIED WERE YOU WITH THE QUALITY OF INSTRUCTION AT UVCC? GRADUATE FOLLOW-UP SURVEY 1992



Source: Utah Valley State College, Office of Institutional Research and Strategic Planning

n = 490

HOW SATISFIED WERE YOU WITH THE USEFULNESS/RELEVANCE OF TRAINING TO YOUR CURRENT JOB? GRADUATE FOLLOW-UP SURVEY 1992

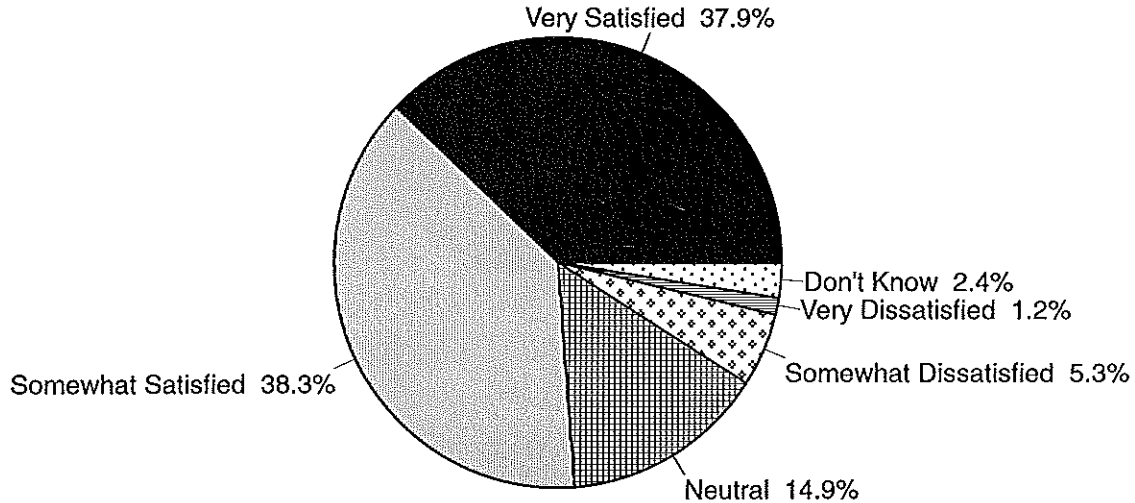


Source: Utah Valley State College, Office of Institutional Research and Strategic Planning

n = 490

131

HOW SATISFIED WERE YOU WITH THE CAREER OR TRANSFER PREPARATION AT UVCC? GRADUATE FOLLOW-UP SURVEY 1992



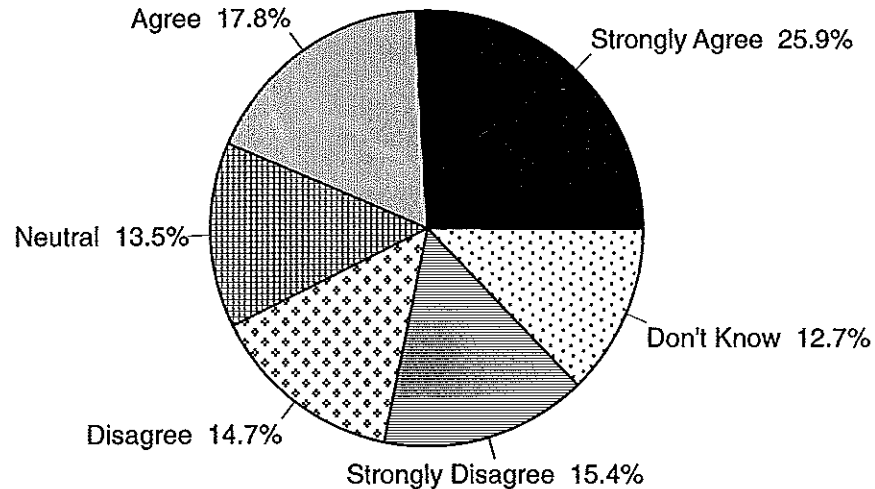
Source: Utah Valley State College, Office of Institutional Research and Strategic Planning

n = 490

132

THE SEMESTER SYSTEM SUITED MY SCHEDULE BETTER?

GRADUATE FOLLOW-UP SURVEY 1992



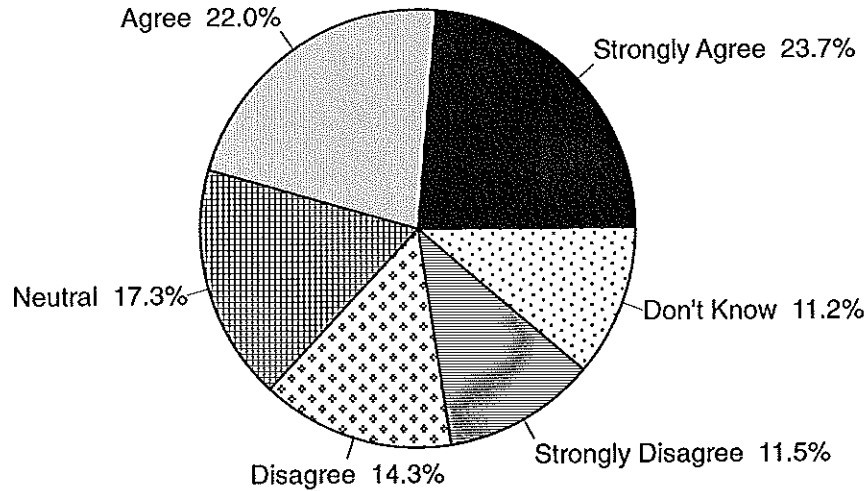
Source: Utah Valley State College, Office of Institutional Research and Strategic Planning

n = 490

133

THE LEARNING PROCESS WAS ENHANCED DUE TO MORE TIME IN CLASS IN THE SEMESTER SYSTEM?

GRADUATE FOLLOW-UP SURVEY 1992



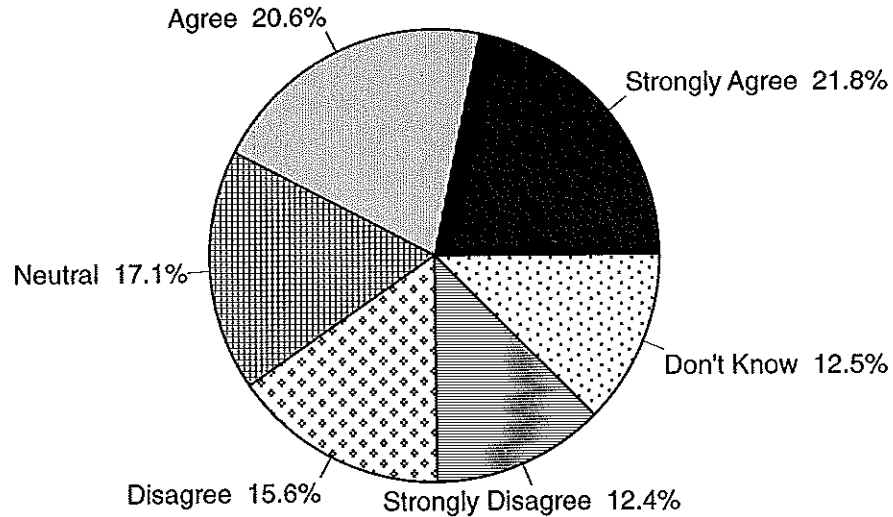
Source: Utah Valley State College, Office of Institutional Research and Strategic Planning

n = 490

134

I FELT I LEARNED MORE IN THE SEMESTER SYSTEM?

GRADUATE FOLLOW-UP SURVEY 1992



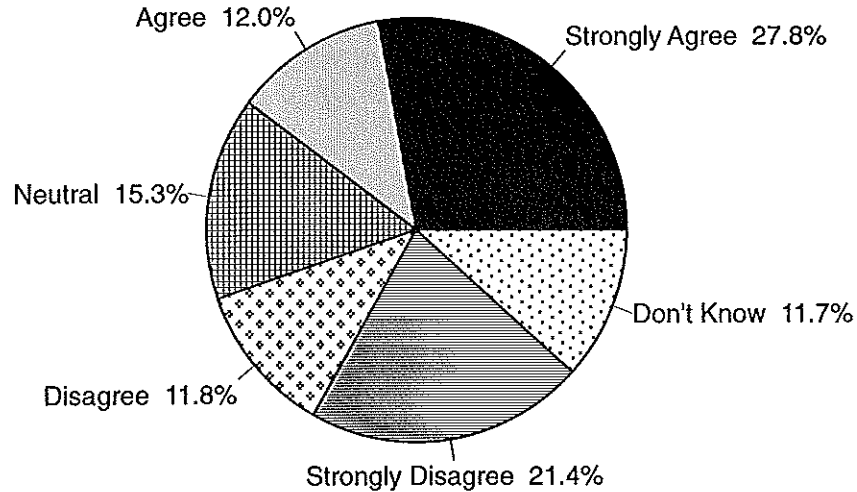
n = 490

135

Source: Utah Valley State College, Office of Institutional Research and Strategic Planning

I LIKED THE SEMESTER SYSTEM BETTER?

GRADUATE FOLLOW-UP SURVEY 1992



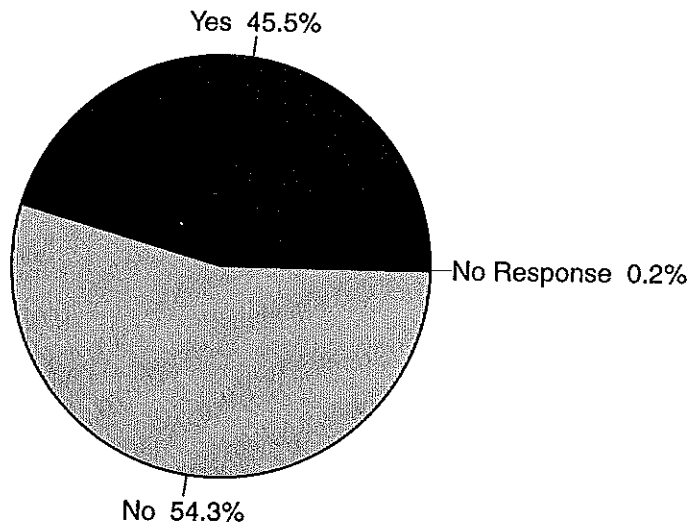
Source: Utah Valley State College, Office of Institutional Research and Strategic Planning

n = 490

136

ARE YOU CURRENTLY TAKING ANY CLASSES OR TRAINING?

GRADUATE FOLLOW-UP SURVEY 1992

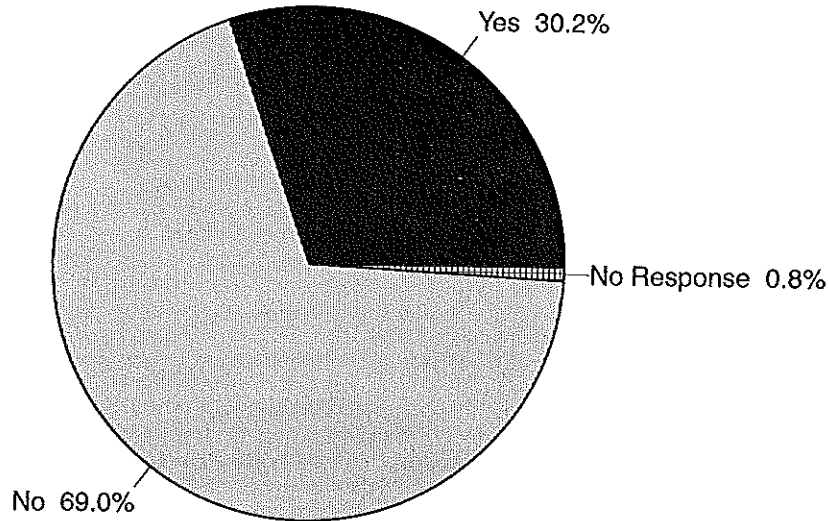


Source: Utah Valley State College, Office of Institutional Research and Strategic Planning

n = 490

137

AFTER GRADUATING FROM UVCC DID YOU
ENROLL AT A 4-YEAR COLLEGE OR UNIVERSITY?
GRADUATE FOLLOW-UP SURVEY 1992

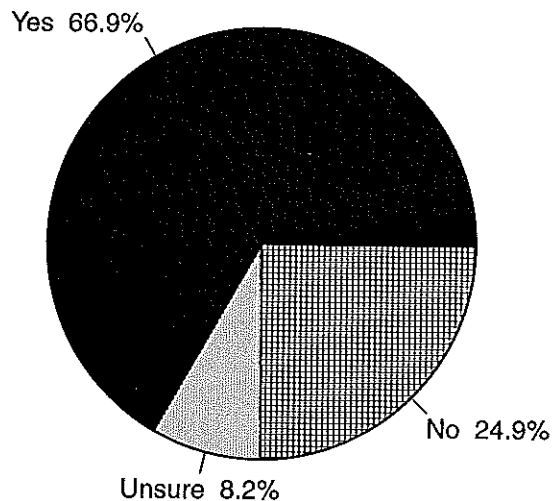


Source: Utah Valley State College, Office of Institutional Research and Strategic Planning

n = 490

138

IF UVCC WERE TO BECOME A 4-YEAR SCHOOL,
WOULD YOU CONSIDER RETURNING FOR A
BACCALAUREATE DEGREE?
GRADUATE FOLLOW-UP SURVEY 1992



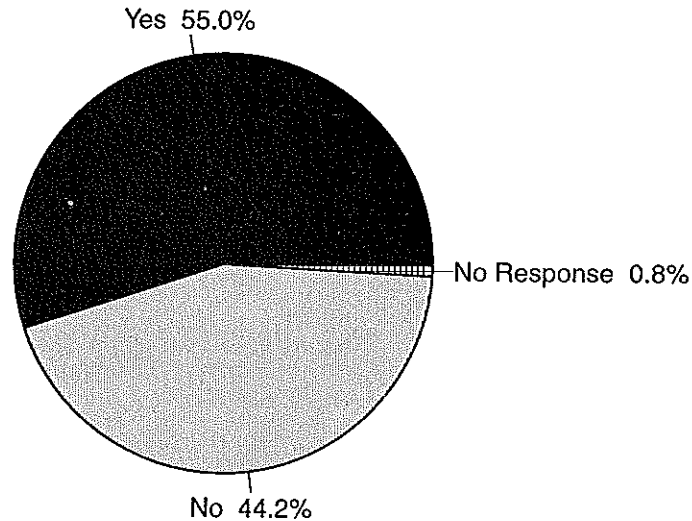
Source: Utah Valley State College, Office of Institutional Research and Strategic Planning

n = 490

139

AFTER GRADUATING FROM UVCC, DID YOU LOOK FOR A FULL-TIME JOB?

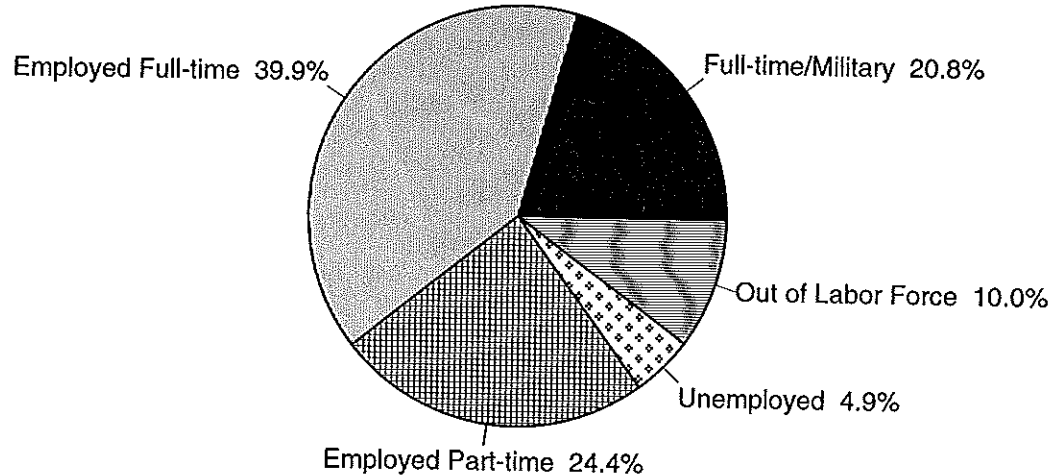
GRADUATE FOLLOW-UP SURVEY 1992



Source: Utah Valley State College, Office of Institutional Research and Strategic Planning

n = 490
140

WHICH OF THE FOLLOWING BEST DESCRIBES YOUR CURRENT EMPLOYMENT SITUATION? GRADUATE FOLLOW-UP SURVEY 1992

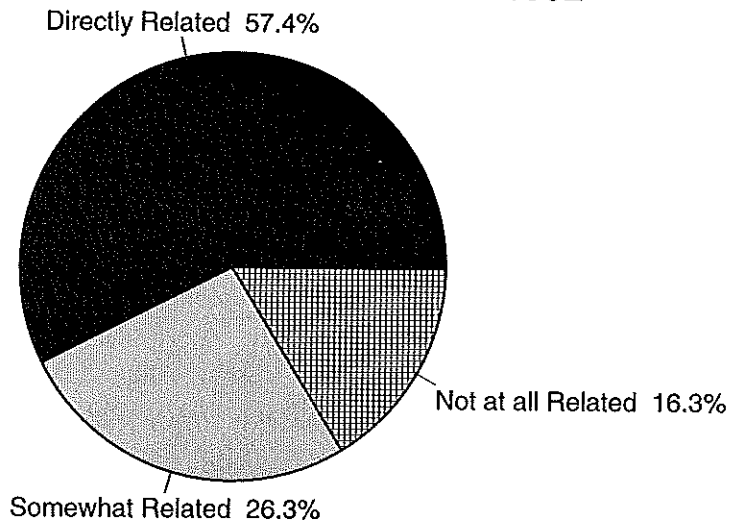


Source: Utah Valley State College, Office of Institutional Research and Strategic Planning

n = 490

HOW IS YOUR JOB RELATED TO THE SKILLS YOU DEVELOPED AT UVCC?

GRADUATE FOLLOW-UP SURVEY 1992

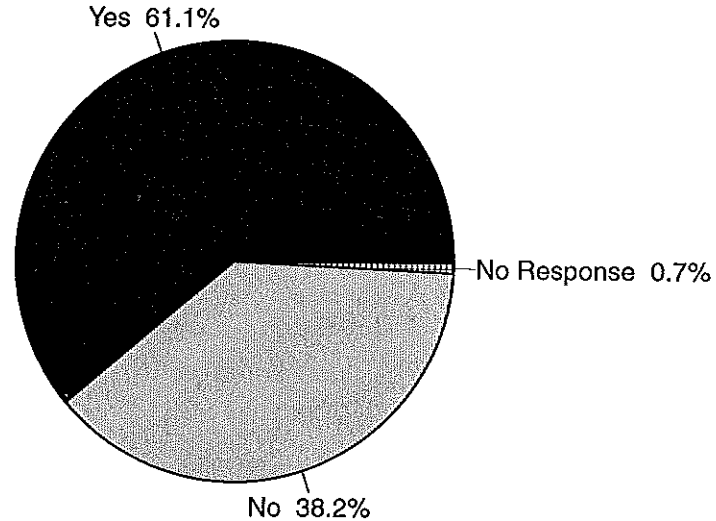


Source: Utah Valley State College, Office of Institutional Research and Strategic Planning

n = 490

142

IS YOUR CURRENT JOB THE FIRST ONE YOU
HAVE HAD IN THIS CAREER FIELD?
GRADUATE FOLLOW-UP SURVEY 1992

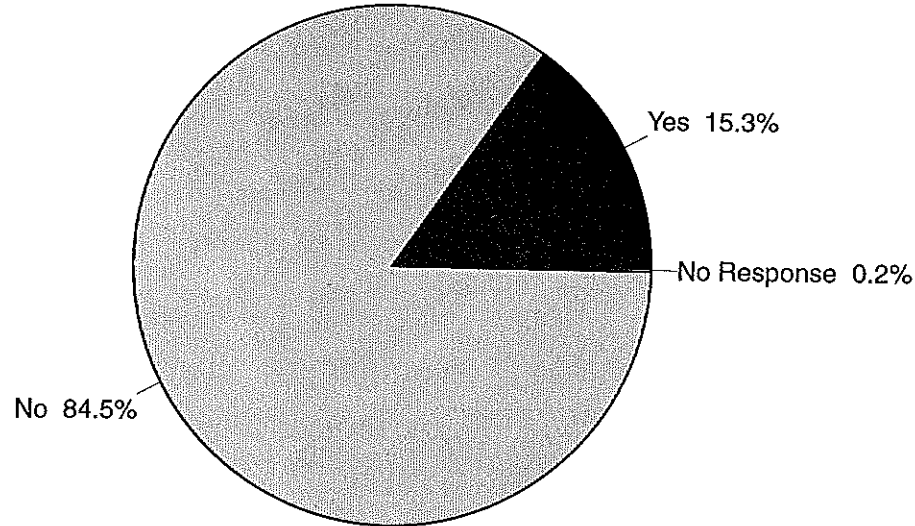


Source: Utah Valley State College, Office of Institutional Research and Strategic Planning

n = 490

143

WERE YOU EMPLOYED IN THIS JOB BEFORE
ENROLLING IN THE UVCC CAREER PROGRAM?
GRADUATE FOLLOW-UP SURVEY 1992

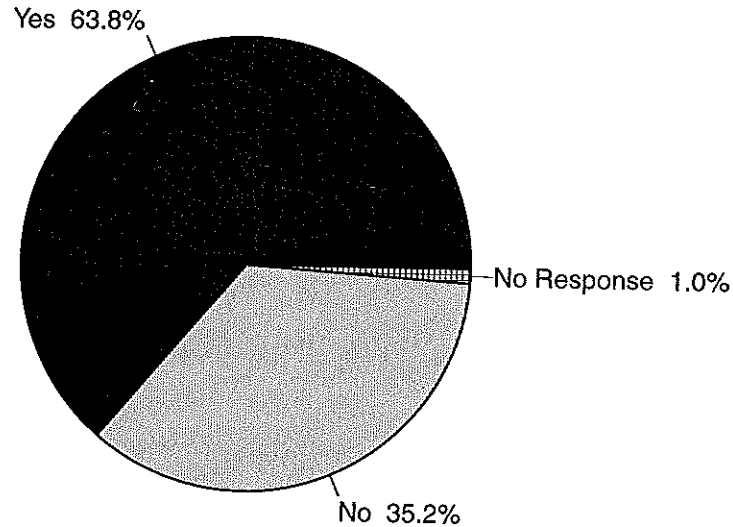


Source: Utah Valley State College, Office of Institutional Research and Strategic Planning

n = 490

144

DID YOUR UVCC DEGREE/CERTIFICATE HELP YOU OBTAIN THIS JOB? GRADUATE FOLLOW-UP SURVEY 1992



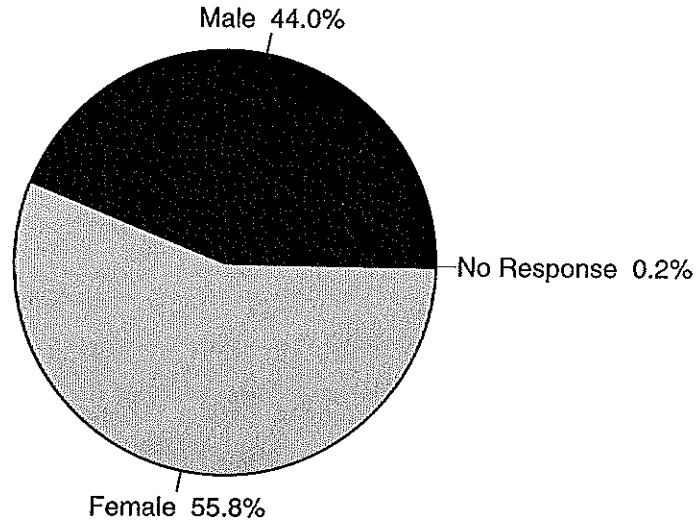
Source: Utah Valley State College, Office of Institutional Research and Strategic Planning

n = 490

145

GENDER OF RESPONDENTS?

GRADUATE FOLLOW-UP SURVEY 1992

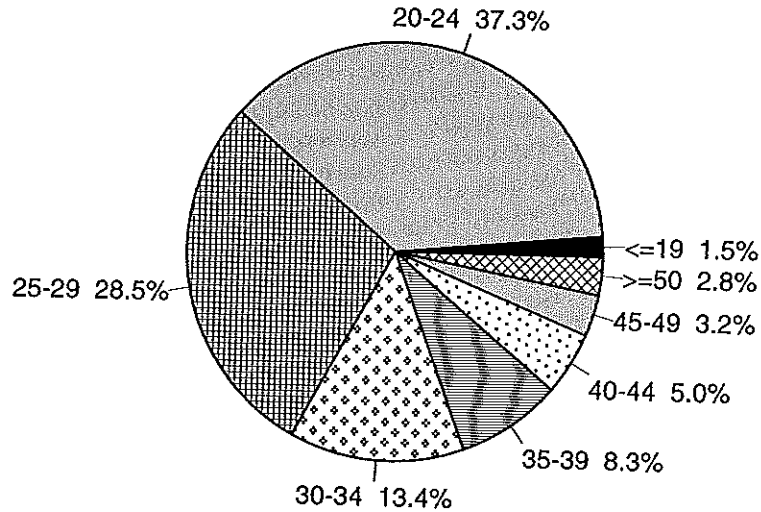


Source: Utah Valley State College, Office of Institutional Research and Strategic Planning

n = 490
146

WHAT IS YOUR AGE?

GRADUATE FOLLOW-UP SURVEY 1992

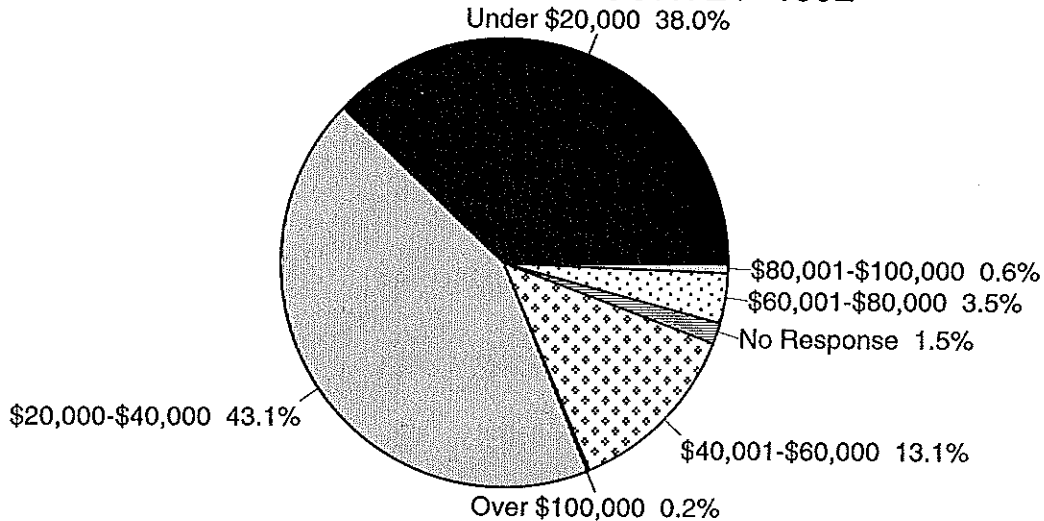


Source: Utah Valley State College, Office of Institutional Research and Strategic Planning

n = 490

147

WHICH OF THE FOLLOWING BEST DESCRIBES YOUR ANNUAL FAMILY INCOME? GRADUATE FOLLOW-UP SURVEY 1992



Source: Utah Valley State College, Office of Institutional Research and Strategic Planning

n = 490

148

NEW STUDENT SURVEY FALL 1993

According to the Fall 1993 New Student Survey, 77.5 percent of new fall students work more than 10 hours per week.

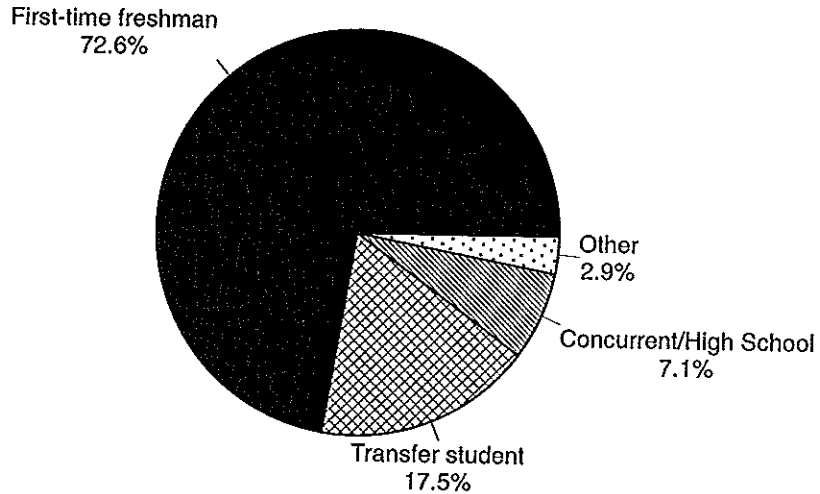
More than 2,900 new fall students were surveyed relative to family size, living arrangements, need for financial assistance and working schedules. It was discovered through this survey that: 21 percent of new fall students live within five miles of the school and an additional 26.3 percent live within 10 miles of the school.

Forty-six percent of all new fall students live with parents or relatives and 23 percent live with other students.

Almost 60 percent of new fall students need financial assistance and 60 percent of new fall students come from families with five or more children.

What Is Your Student Status?

Fall 1993 New Student Survey



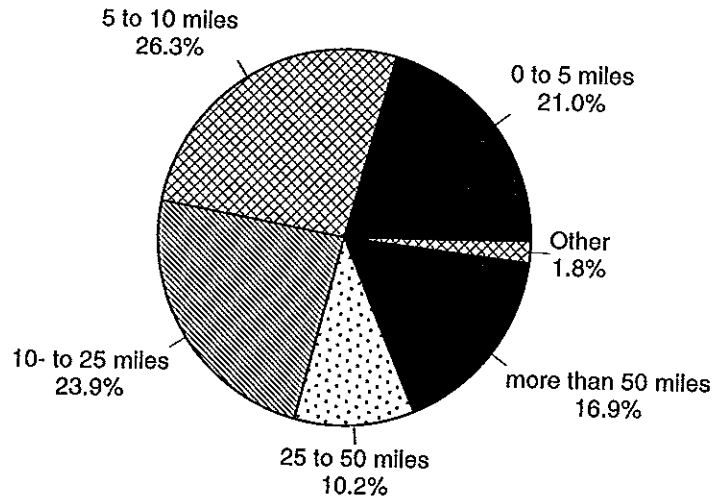
Source: Office of Institutional Research and Strategic Planning

n = 2993

150

How Far Is Your Home From UVSC?

Fall 1993 New Student Survey

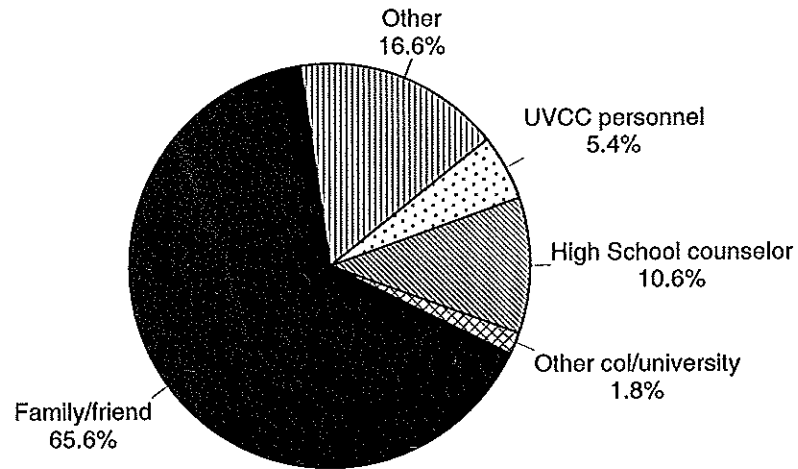


Source: Office of Institutional Research and Strategic Planning

n = 2993

How Did You Learn About UVSC?

Fall 1993 New Student Survey



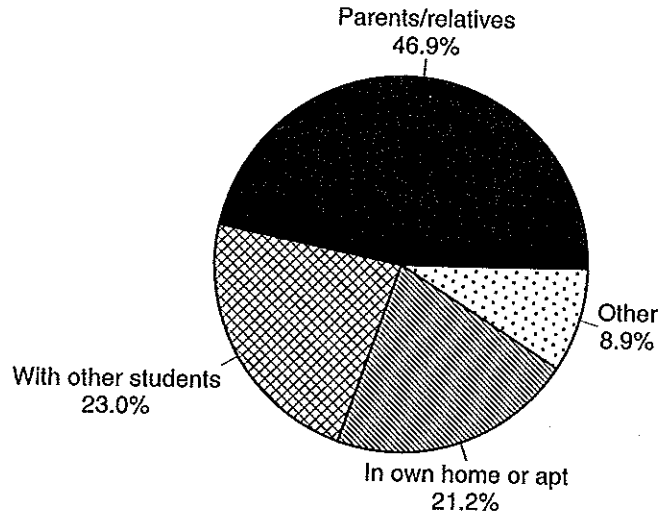
Source: Office of Institutional Research and Strategic Planning

n = 2993

152

What Are Your Living Arrangements?

Fall 1993 New Student Survey



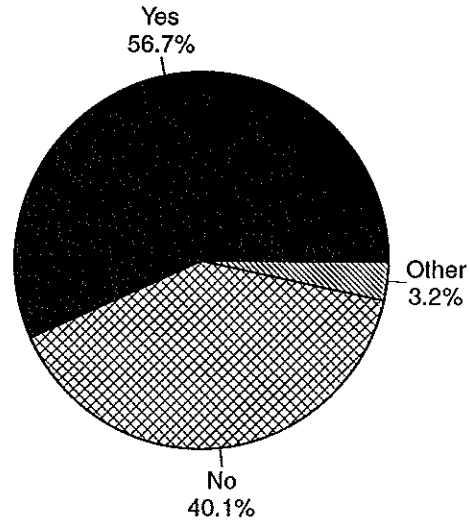
Source: Office of Institutional Research and Strategic Planning

n = 2993

153

Will You Need Financial Assistance?

Fall 1993 New Student Survey



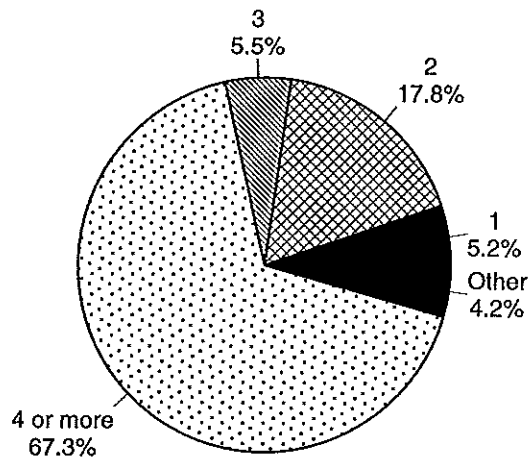
Source: Office of Institutional Research and Strategic Planning

n = 2993

154

How Many Semesters Do You Plan To Attend?

Fall 1993 New Student Survey



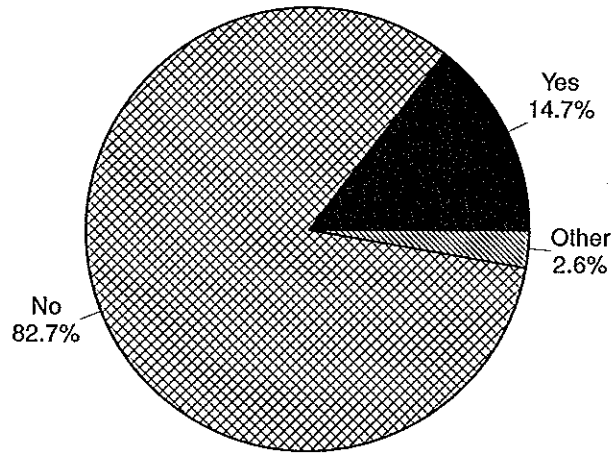
Source: Office of Institutional Research and Strategic Planning

n = 2993

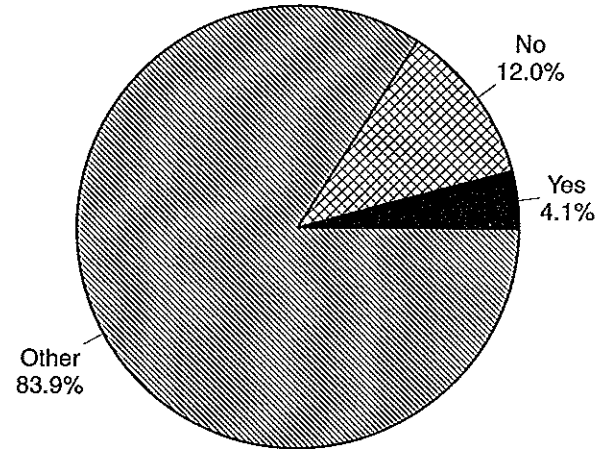
155

Are You A Member Of A Single-Parent Family?

Fall 1993 New Student Survey



Are you a single parent?



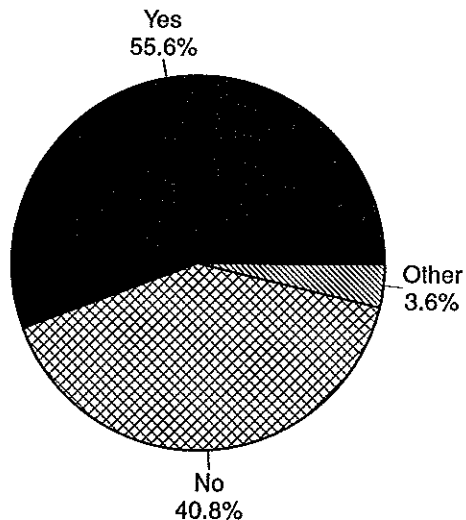
Source: Office of Institutional Research and Strategic Planning

n = 2993

156

Has Anyone In Your Family Completed A Four-Year College Degree?

Fall 1993 New Student Survey



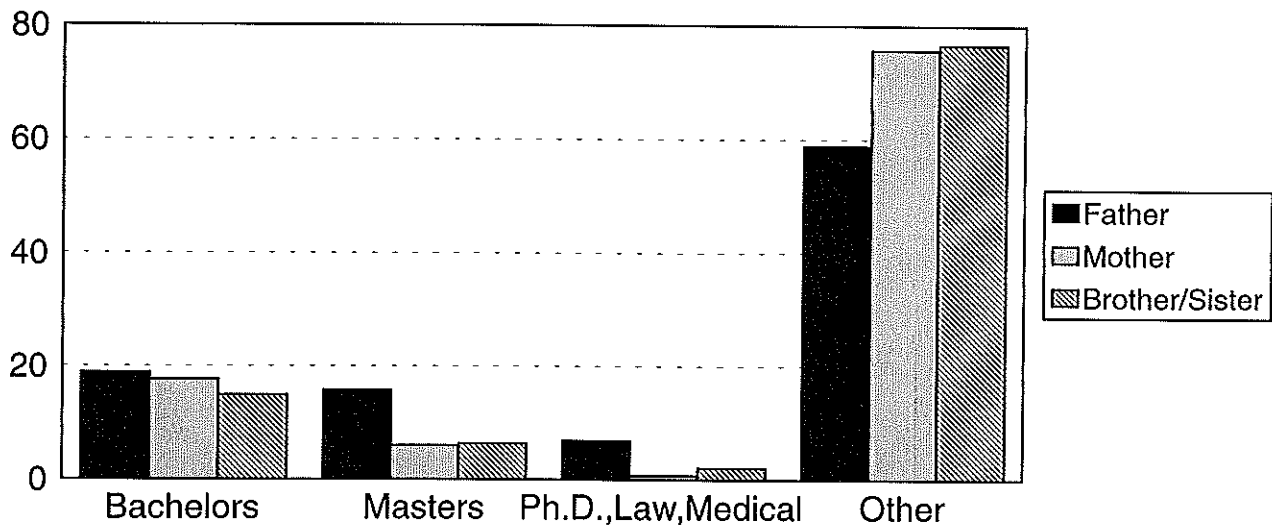
Source: Office of Institutional Research and Strategic Planning

n = 2993

157

If YES, What Is The Highest Degree For Your:

Fall 1993 New Student Survey



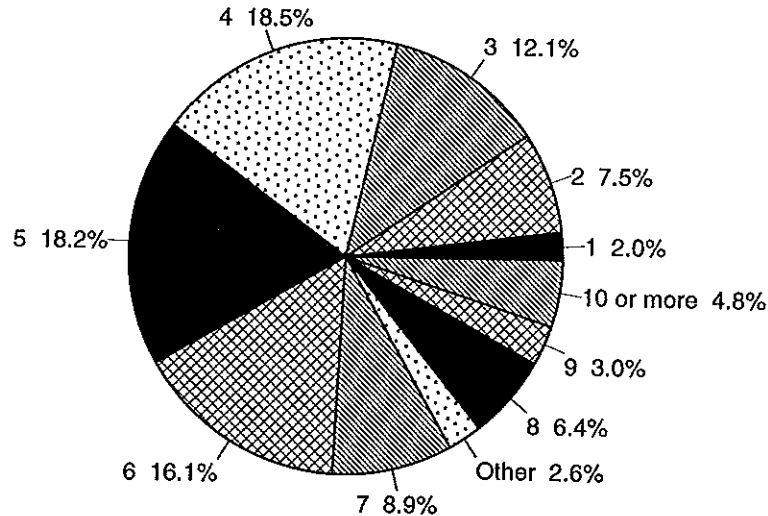
Source: Office of Institutional Research and Strategic Planning

n = 2993

158

How Many Children (including yourself) Are In Your Parents' Family?

Fall 1993 New Student Survey

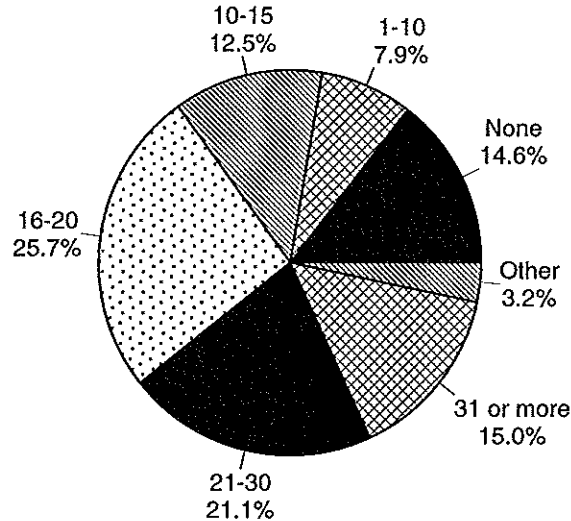


Source: Office of Institutional Research and Strategic Planning

n = 2993

How Many Hours Do You Plan To Work Each Week While Attending School?

Fall 1993 New Student Survey



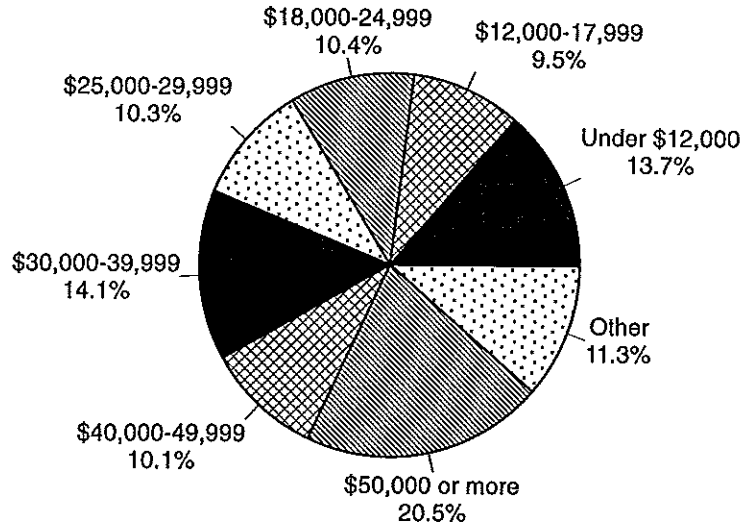
Source: Office of Institutional Research and Strategic Planning

n = 2993

160

What Is Your Approximate Family Income?

Fall 1993 New Student Survey



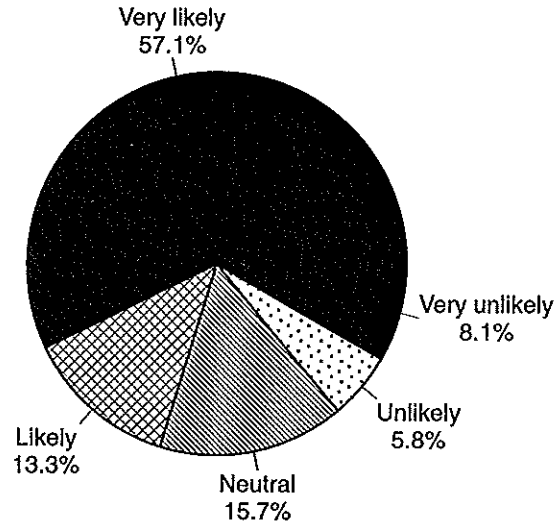
Source: Office of Institutional Research and Strategic Planning

n = 2993

161

How Likely Are You To Pursue A Four-Year Degree?

Fall 1993 New Student Survey



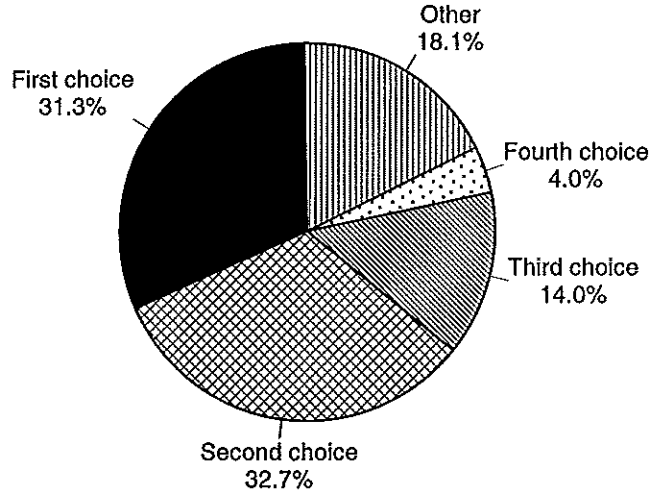
Source: Office of Institutional Research and Strategic Planning

n = 2993

162

If You Decide To Pursue A Four-Year Degree, Where Would UVSC Rank As An Option?

Fall 1993 New Student Survey



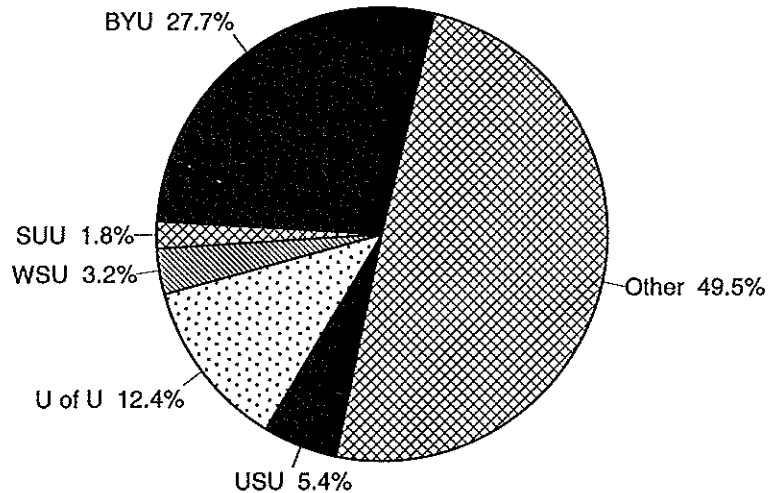
Source: Office of Institutional Research and Strategic Planning

n = 2993

163

If UVSC Was Not Your First Choice, Please Indicate Your First Choice

Fall 1993 New Student Survey



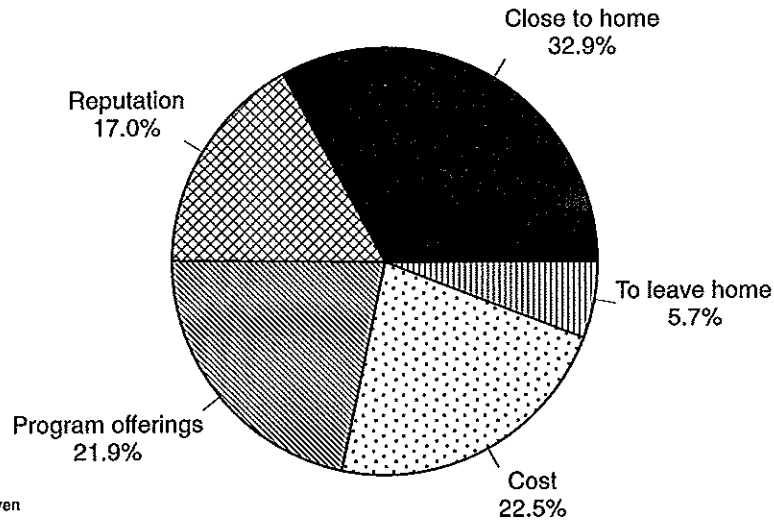
Source: Office of Institutional Research and Strategic Planning

n = 2993

164

Why Did You Choose To Attend UVSC?

Fall 1993 New Student Survey



More than one answer may have been given

Source: Office of Institutional Research and Strategic Planning

n = 2993

165

INDEX/GLOSSARY

Academic Affairs (Organizational Chart)	24
Ace/Pace Presidents	73
Administration and Institutional Advancement (Organizational Chart)	22
Advisory Committees, Accounting, Air Conditioning and Refrigeration Technology, Automotive Technology, Aviation Science, Building Construction & Construction Management, Building Inspection, Business Management	77
Advisory Committees, Cabinetry and Architectural Woodwork, Child Education & Family Studies, Collision Repair, Computer Science & Information, Culinary Arts, Diesel Mechanics, Drafting	78
Advisory Committees, Education, Electrical Automation, Electronics & Computer Technology, Environmental Technology	79
Advisory Committees, Fashion Merchandising, Finance and Banking, Fire Science, Graphics/Commercial Art, Hospitality Management	80
Advisory Committees, International Business, Legal Assistant, Lineman Technology, Machine Tool Technology, Nursing	81
Advisory Committees, Office Technology Administration, Physical Plant Management, Professional Driving, Welding	82
After graduating from UVCC did you enroll at a 4-year college or university?	138
After graduating from UVCC, did you look for a full-time job?	140
Age of Physical Facilities, Placed in Service, Square Footage	110
Age Distribution of Full-Time Faculty by Degree and Gender, August 1993	32

INDEX/GLOSSARY (continued)

Are you a member of a single parent family?	156
Are you currently taking any classes or training?	137
Athletics, Final Records and Conference Finishes	20
Average Credit Hours Per Student by School, Fall Semesters 1987-1993	54
Average Credit Hours Per Student, Fall Semester 1993 (bar graph)	53
Average Credit Hours Per Student, Fall Semesters 1987-1993 (bar graph)	55
Board of Trustees Chairs	31
Board of Trustees Members, Appointed as of June 16, 1993	30
Budget Office (Organizational Chart)	29
Citizenship of Foreign Students, Fall 1993 (map)	67
Citizenship of Foreign Students, Fall 1990-1993	68
Clubs and Organizations, Alpha Kappa Epsilon, Campus Venture, CAS-CASP, Chess, Cogito Ergo Pingo ...	83
Clubs and Organizations, Computer Club, DEX, Drafting Club, Ecumenical College Fellowship, Environmental	84
Clubs and Organizations, French Club, GAIA, Game Club German Club, Health Clubs and Awareness, Hewlett Packard	85
Clubs and Organizations, IMA, Intercollegiate Knights, International Student Club, Jipang, Karate Club, Korean	86
Clubs and Organizations, Lambda Delta Sigma, LAUSA, Law Society, LDSSA, Math, MIDimuse	87
Clubs and Organizations, Native American Student Club, Outdoor Recreation, Phi Beta Lambda, Phi Theta Kappa, Polynesian Club	88
Clubs and Organizations, Progressive Club, Racquetball, Rainbow Club, Rodeo Club, Russian Club, Sigma Gamma Chi,	89

INDEX/GLOSSARY (continued)

Clubs and Organizations, Ski Club, Soccer, Spanish Club, Student Alumni, Student Literary Publications Club, Synergy	90
Clubs and Organizations, VICA, USU/UVSC IMA, Utah Valley Collegiate Aero Club, Utah Valley Cyclists, UVSC Ballroom Dance Company, Western Dance Club	91
Clubs and Organizations, Women's Connection	92
College Calendar, 1993 Fall Semester	7
College Relations (Organizational Chart)	23
College Organizational Chart	21
College Calendar, 1994 Summer Term	9
College Name Changes	10
College Calendar, 1994 Spring Semester	8
College Presidents	10
County Resident/Non-Resident Headcount, Fall Semesters 1987-1993	47
Did your UVCC degree/certificate help you obtain this job?	145
Did you change this educational objective while at UVCC?	113
Do you feel your experiences at UVCC have improved the quality of your life?	116
Education and General Revenue Sources, 1993-1994 (pie chart)	97
Education and General Operating Funds Use Expenditure Category, 1993-1994 (pie chart)	95
Education and General Operating Funds Expenditure Purpose, 1993-1994 (pie chart)	96
Employee of the Year	19
Enrollment Comparison of Utah Universities/Colleges, Fall 1992	56
Enrollment History, Spring Semesters 1987-1993 (bar graph)	45

INDEX/GLOSSARY (continued)

Enrollment History, Fall Semesters 1987-1993 (bar graph)	44
Enrollment History, Summer Terms 1987-1993 (bar graph)	46
Enrollment Comparison - Annualized FTE Students (bar graph)	43
Ethnic Distribution of Full-Time Faculty by Degree and Gender, August 1993	33
Faculty Senate Presidents	73
Federal, State, and Private Gift Status Report 1992-1993	103
Financial Aid Activity Report 1992-1993	102
Freshman/Sophomore Headcount, 1987-1993 (bar graph)	61
Fuel and Power Expenditures, 1985-1993 (bar graph)	99
Full-Time Equivalent Enrollment, Fall Semester 1993	42
Gender of respondents?	146
Geographic Origin of Students, United States, Fall 1990-1993	63
Geographic Origin of Students, United States, Fall 1993 (map)	62
Graduate Degrees and Certificates Awarded 1991-92 and 1992-93	72
GRADUATE FOLLOW-UP	111
Has anyone in your family completed a four-year college degree?	157
Have you achieved your ultimate educational objective at UVCC?	115
Headcount Distribution by Age, Fall 1987-1993	58
Headcount Distribution by Ethnic Group, Fall 1987-1993	59
Headcount by Area of Study, Fall Semesters 1987-1993 (bar graph)	52
Headcount Enrollment, Fall Semester 1993	41
History of Education and General Operating Budget and Appropriation 1982-1993 (bar graph)	98
History of Utah Valley State College	2

INDEX/GLOSSARY (continued)

History of State Appropriation Per FTE, 1979-1993	94
History of Education and General Operating Budgets and Appropriations 1979-1993	93
How many semesters do you plan to attend?	155
How satisfied were you with the usefulness/relevance of training to your current job?	131
How did you learn about UVSC?	152
How satisfied were you with the career or transfer preparation at UVCC?	132
How is your job related to the skills you developed at UVCC?	142
How far is your home from UVSC?	151
How satisfied were you with the quality of instruction at UVCC?	130
How likely are you to pursue a four year degree?	162
How many children are in your parents' family?	159
How many hours do you plan to work each week while attending school?	160
How satisfied were you with the content of courses at UVCC?	129
I liked the semester system better?	136
I felt I learned more in the semester system?	135
If yes, what is the highest degree for your father, mother brother/sister?	158
If UVCC were to become a 4-year school, would you consider returning for a baccalaureate degree?	139
If you could go back, knowing what you know now, would you still attend UVCC?	117
If you decide to pursue a four-year degree, where would UVSC rank as an option?	163
Institutional Mission	1
Institutional Research and Strategic Planning (Organizational Chart)	27
Is your current job the first one you have had in this career field?	143
Male/Female Headcount, Fall 1987-1993 (bar graph)	60

INDEX/GLOSSARY (continued)

Mean Age of Students, 1987-1993 (bar graph)	57
NEW STUDENT SURVEY	149
Part-Time/Full-Time Headcount, Fall Semesters 1987-1993	50
Part-Time/Full-Time Headcount, Fall Semesters 1987-1993 (bar graph)	51
Physical Facilities, Square Feet (bar graph)	109
Physical Facilities, Buildings in Progress	106
Physical Facilities, Building, Square Feet	105
Physical Facilities, Priority Requests 1994	107
Physical Facilities, Type of Space	108
Private Funding, 1991-1993	104
Rank by Department, 1992-1993	38
Resident/Non-Resident Headcount, Fall Semesters 1987-1993 (bar graph)	48
Scholarship Activity Report 1992-1993	100
Student Body Presidents	16
Student Services (Organizational Chart)	28
Teacher of the Year	19
The learning process was enhanced due to more time in the semester system?	134
The semester system suited my schedule better?	133
Tuition and Student Fees, Fall 1989, 1990, 1991, 1992, 1993	15
Universities Represented by Doctorates of Contract Faculty and Administrators, 1992-1993	34
Utah System of Higher Education - Headcount Enrollment by Utah County Residency (bar graph)	49
Utah State Board for Vocational Education Chairs	13
Utah Commissioners of Higher Education	12

INDEX/GLOSSARY (continued)

Utah System of Higher Education	14
Utah State Board of Regent Chairs	12
Utah Valley State College Alumni Association Board of Directors, 1993-1994	76
Utah Valley State College Foundation Board Members, 1993-1994	75
Utah Valley State College Foundation Board, 1993-1994	74
Utah State Board of Regents	11
UVCC should have helped you to improve your ability to write well?	121
UVCC should have helped you to expand your tolerance for people and ideas?	127
UVCC helped you to expand your tolerance for people and ideas?	128
UVCC should have helped you to improve your ability to communicate orally?	119
UVCC helped you learn to get along better with other people?	126
UVCC should have helped you learn to get along better with other people?	125
UVCC helped you to improve your ability to write well?	122
UVCC should have helped you to improve your ability to make good decisions?	123
UVCC helped you to improve your ability to made good decisions?	124
UVCC helped you to improve your ability to communicate orally?	120
Were you employed in this job before enrolling in the UVCC career program?	144
What was your primary educational objective when you first enrolled?	112
What did you change your educational objective to?	114
What is your student status?	150
What is your age?	147
What are your living arrangements?	153
What is your approximate family income?	161

INDEX/GLOSSARY (continued)

Which of the following best describes your current employment situation?	141
Which of the following best describes your annual family income?	148
Will you need financial assistance?	154
Would you recommend attending UVCC to your friends and acquaintances?	118