

PREFACE

This FACT BOOK is an annual publication of Utah Valley Community College and the Office of Institutional Research and Strategic Planning. The purpose of the FACT BOOK is to translate accumulated data into useful information to those within and outside our college environment.

Every effort has been made to include within this publication the data most often requested. A decision had to be made early in the development of the FACT BOOK to limit the published data. We invite the users of this book to freely comment on what data they would like to have included in the future. Please contact our office, (801) 222-8000 ext. 8365, with your comments.

The Office of Institutional Research and Strategic Planning wishes to thank the individuals or departments who have contributed to this publication.



*Nancy M. Smith, Ph.D.
Director
Office of Institutional Research
and Strategic Planning*

UTAH VALLEY COMMUNITY COLLEGE
FACT BOOK
1991-92 DATA
TABLE OF CONTENTS

GENERAL INFORMATION	1
ADMINISTRATION	20
FACULTY	31
ENROLLMENT	36
STUDENT PROFILE	50
SUPPORT ORGANIZATIONS	65
FINANCE	84
FACILITIES	97
RESEARCH	103
INDEX/GLOSSARY	148

CONTENTS

GENERAL INFORMATION

Institutional Mission	1
History of Utah Valley Community College	2
College Calendar, 1992 Fall Semester	7
College Calendar, 1993 Spring Semester	8
College Calendar, 1993 Summer Term	9
College Presidents	10
College Name Changes	10
Utah State Board of Regents	11
Utah State Board of Regent Chairs	12
Utah Commissioners of Higher Education	12
Utah State Board for Vocational Education Chairs	13
Tuition and Student Fees, Fall 1988, 1989, 1990, 1991, 1992	14
Student Body Presidents	15
Teacher of the Year	18
Employee of the Year	18
Athletics, Final Records and Conference Finishes	19

INSTITUTIONAL MISSION

Utah Valley Community College is dedicated to providing a broad range of quality academic, vocational, technical, and social opportunities and experiences designed to encourage and assist students in attaining their goals and maximizing their talents and potential, personally and professionally. The college is committed to meeting student and community needs for occupational training; providing developmental, general, and transfer education; meeting the needs for continuing education for personal enrichment and career enhancement; and providing diverse social, cultural, and international opportunities, and student support services.

HISTORY OF UTAH VALLEY COMMUNITY COLLEGE

Utah Valley Community College, Orem, is situated in the heart of Utah County. Nestled beneath mountains on all sides, the name Utah Valley has become synonymous with Utah County and is used interchangeably throughout the state. With a population of more than 263,000 it is the second largest county in the State and includes twenty incorporated cities. The College serves primarily the Mountainlands District of students with Utah County residents comprising 61 percent of it's enrollment.

The College was established when the Utah State Legislature passed an appropriation of \$100,000 for the biennium of 1936-38 for vocational education. Central Utah residents who had been supported by government funding, wanted to upgrade their skills in order to obtain better jobs and many enrolled in vocational classes administered by the school districts. However, the school districts were not able to give adequate supervision to organize, conduct, coordinate, and supervise adult programs, and in the spring of 1938, Hyrum E. Johnson of Provo was appointed supervisor of vocational education for Utah and Heber Valleys.

*In the fall of 1941 the scattered classes throughout the two valleys were moved to a central location in south Provo and the Fairgrounds Campus was enthusiastically welcomed by the staff and students. Provo School District assumed the financial supervision of the new school and both federal and state monies flowed through the District to the school. It became imperative that the school have proper identification and the name **Central Utah Vocational School** was selected. With the advent of World War II, most of the school's operating budget came from federal government funds for war production training.*

The birth of the school as a state institution was March 15, 1945, when Governor Herbert B. Maw signed a bill appropriating \$50,000 to operate for the biennium of 1945-47. A second bill was introduced and adopted in 1947 making the school a permanent state institution without any cut-off date. In 1946 Wilson W. Sorensen was appointed director of the school by the Utah State Board for Vocational Education and was the chief executive officer until June 1982.

In 1948 a new site, located between 1200 and 1400 North on 150 East in Provo, was obtained. The site was purchased by the four school districts (Alpine, Nebo, Provo and Wasatch) as well as Provo City and Utah County, with the understanding, if the property were given to the school, the state would appropriate the money for buildings. The location of the campus was considered ideal because of accessibility to students from Provo High School, the Vocational School, or Brigham Young University.

In March 1953 the name of the school was changed from Central Utah Vocational School to Utah Trade Technical Institute. In March 1967 the name was again changed, this time to Utah Technical College at Provo. In February 1966 the Utah State Board for Vocational Education approved granting Associate of Applied Science Degrees and on July 14, 1967, the State Board approved offering general education courses. In August of 1971 the Associate of Science Degree was approved.

Enrollment growth became so immense the Provo Campus was no longer adequate and a search for a new site was begun. Several locations in Provo and Orem were reviewed and a decision was made to purchase 185 acres in southwest Orem. This location was chosen because of its landscape, excellent traffic flow, and accessibility. The business education building, student center, heating plant, and auto trades building were occupied at the beginning of the 1976-77 school year.

In 1974 the Associate of Science Degree was discontinued, but approval was given by the Board of Regents to again award the degree in December 1980. In 1981 the Legislature approved granting an Associate of Science Degree in general education on a three-year probationary basis with permanent approval in 1985.

On June 1, 1982, Wilson W. Sorensen retired as President and Dr. J. Marvin Higbee was selected by the Board of Regents as the new President.

Since the move to the Orem Campus the College continued to grow with a trades building, learning resource center, athletic center and administration building added. As classes and service facilities were moved from Provo to Orem the vacated areas were filled by new programs, thus maintaining a split campus. A new science building was occupied in fall 1989. An extensive addition to the Learning Resource building was completed for use in 1992.

Beginning fall quarter 1985 articulation was completed with Weber State College to offer a four-year bachelors degree in electronic technology while students continue their advanced courses on this campus. In winter quarter 1987 the same opportunity was offered students in the computer information systems program.

In 1987 the legislature approved a name change better reflecting the location and mission of the College-- Utah Valley Community College.

In October 1987 Dr. J. Marvin Higbee resigned as President and Dr. Lucille T. Stoddard was appointed Acting President until a new chief executive officer was selected.

Dr. Kerry D. Romesburg was appointed President of Utah Valley Community College on July 17, 1988.

The Associate of Arts Degree was approved by the Board of Regents in 1987 and in 1989 the Regents and State Legislature approved funding for the Associate Degree Nursing program.

October 21, 1988, the College was granted permission by the State Board of Regents to convert from the quarter to the semester calendar system. This change became effective fall semester 1990.

A four-year accounting program became available to students beginning fall semester 1990.

In 1989 the College added an International Studies Center to coordinate exchange programs, bring international students on campus, and assist in giving faculty exchange opportunities. During this same period Utah Valley Community College became one of the first community colleges in the United States to sign an exchange agreement with Soviet Russia. Exchange agreements were reached with Central America and Caribbean countries, China, Hong Kong, Japan, Taiwan and Germany.

August 1, 1991, Dr. Sharon Staples was appointed Director of the new University Center and assumed responsibility for bachelor's degree programs in accounting, computer science information systems, criminal justice, early childhood/elementary education and electronic engineering technology. These programs are offered on the UVCC campus and degrees are awarded through Utah State and Weber State Universities.

January 17, 1992, the Utah State Board of Regents directed Utah Valley Community College and the Commissioner of Higher Education to develop a proposed model or plan for offering a limited number of high demand bachelor's degree programs directed to the needs of the region. The Regents' action directed that the model include the following: full data on costs with a 5-year projection, enrollment projections, program offerings, deployment of faculty, quality safeguards, accreditation processes, library and other requirements. Underscoring all of the process was the Regents' expressed concern for the undiminished continuation of UVCC's present lower division academic and technical programs.

A five-year, renewable consortium agreement was established between Utah Valley Community College and the Kiev College of Hotel Management. The program began in September, 1992 in Kiev, Ukraine.

Sources: A Miracle in Utah Valley--The Story of Utah Technical College 1941-1982 by Wilson W. Sorensen
Utah Valley Community College--Office of Vice President for Academic Affairs
Utah Valley Community College--Office of the President

COLLEGE CALENDAR

1992 FALL SEMESTER

Early Registration Payment Deadline	August 12
Instruction Begins	August 26
Labor Day Holiday	September 7
Fall Break	October 19
Thanksgiving Holiday	November 25, 26, 27
Last Day of Classes	December 11
Final Examinations	December 14, 15, 16, 17
Fall Semester Ends	December 17

COLLEGE CALENDAR
1993 SPRING SEMESTER

Instruction Begins	January 6
Human Rights Day	January 18
President's Day Holiday	February 15
Spring Break	March 19
Good Friday Holiday	April 9
Last Day of Classes	April 23
Study/Preparation Day	April 24
Final Examinations	April 26, 27, 28, 29
Commencement	April 29

COLLEGE CALENDAR

1993 SUMMER TERM

Instruction Begins	June 7
Independence Day Holiday	July 4
First Block Ends	July 9
Second Block Begins	July 12
Pioneer Day Holiday	July 24
Last Day of Classes	August 13

COLLEGE PRESIDENTS

Mr. Wilson W. Sorensen	1946-1982
Dr. J. Marvin Higbee	1982-1988
Dr. Kerry D. Romesburg	1988-present

COLLEGE NAME CHANGES

1941	Central Utah Vocational School
1963	Utah Trade Technical Institute
1967	Utah Technical College at Provo
1987	Utah Valley Community College

Source: Utah Valley Community College, Office of the President

UTAH STATE BOARD OF REGENTS

<u>Name</u>	<u>Term*</u>
Kenneth G. Anderton	1995
Aileen H. Clyde	1995
Larry D. Cox	1993
Ian M. Cumming	1993
Douglas S. Foxley	1997
John B. Goddard	1997
Robert D. Hales	1993
L. Brent Hoggan	1997
Karen H. Huntsman	1995
Michael O. Leavitt	1997
Evelyn B. Lee	1993
Clifford S. LeFevre	1997
Paul S. Rogers	1995
Steven E. Snow	1995
Fred H. Stringham	1993
Dale O. Zabriskie	1993
Wm. Rolfe Kerr, Commissioner	

* Term expires June 30 of year indicated.

Source: Utah Valley Community College, Office of the President

UTAH STATE BOARD OF REGENT CHAIRS

Peter W. Billings	1969-1973
Donald B. Holbrook	1973-1973
George G. Hatch	1973-1977
Donald B. Holbrook	1977-1981
Kem C. Gardner	1981-1985
Sue Marie Young	1985-1987
W. Eugene Hansen	1987-1989
Douglas S. Foxley	1989-present

UTAH COMMISSIONERS OF HIGHER EDUCATION

G. Homer Durham	1969-1976
Terrel H. Bell	1976-1981
Arvo Van Alstyne	1981-1985
Wm. Rolfe Kerr	1985-present

Source: Office of the Utah Commissioner of Higher Education

**UTAH STATE BOARD OF EDUCATION
UTAH STATE BOARD FOR VOCATIONAL EDUCATION
CHAIRS**

1991-present	Neola Brown	1972-73	John L. Owen
1990-91	Jay Liechty	1970-72	Helen B. Ure
1988-90	Ruth Hardy Funk	1968-70	LeGrand P. Backman
1985-88	Keith T. Checketts	1966-68	Lynn S. Richards
1984-85	M. Richard Maxfield	1964-66	Sheldon S. Allred
1982-84	Oscar McConkie	1962-64	LeGrand P. Backman
1981-82	Jay Monson	1960-62	Moroni H. Brown
1980-81	W. Dean Belnap	1958-60	W. C. Cole
1979-80	Lila Bjorklund	1956-58	Charles A. White
1978-79	Jay Monson	1954-56	R. V. Larson
1977-78	W. Dean Belnap	1952-54	Rulon Hinkley
1976-77	Joan Burnside	1950-52	William O. Bentley
1975-76	Reuben D. Law	1944-50	E. Allen Bateman
1973-75	W. Robert Wright	1940-44	Charles H. Skidmore

Source: Utah State Office of Education

TUITION AND STUDENT FEES

	<u>Fall 1988</u>	<u>Fall 1989</u>	<u>Fall 1990</u>	<u>Fall 1991</u>	<u>Fall 1992</u>
Resident					
Based on:					
5 Credit Hours	\$169	\$178	\$279	\$298.00	\$328.25
10 Credit Hours	\$279	\$308	\$487	\$524.00	\$575.25
15 Credit Hours	\$363	\$389	\$597	\$619.50	\$661.75
Non-Resident					
Based on:					
5 Credit Hours	\$429	\$457	\$718	\$773.50	\$867.50
10 Credit Hours	\$749	\$818	\$1,309	\$1,417.50	\$1,582.00
15 Credit Hours	\$995	\$1,071	\$1,650	\$1,713.00	\$1,855.50

The tuition and fee schedule is partially linear; therefore, the amounts charged for tuition and fees change at each increment of total credit hours enrolled. The above figures show the amounts for three of these increments: 5, 10 and 15 credit hours.

Source: Utah Valley Community College, Fall Quarter 1988, 1989 and Fall Semester 1990, 1991, 1992 Class Schedules.

STUDENT BODY PRESIDENTS

Paul Von Strahl	Orem, Utah	1992-1993
Ken Patey	Orem, Utah	1991-1992
Kelly Bitters	Orem, Utah	1990-1991
Deryn Young	Alton, Utah	1989-1990
Jim Woods	Provo, Utah	1988-1989
Ben Gould	Orem, Utah	1987-1988
George Marshall	Orem, Utah	1986-1987
Bobby Thomas	California	1985-1986
Jay Deuel	Tucson, Arizona	1984-1985
Gordon Wilson	Lehi, Utah	1983-1984
Scott Banasky	Green River, Utah	1982-1983
Kerry Graves	Mapleton, Utah	1981-1982
Mark Fisher	Lanham, Maryland	1980-1981
Lee Barrus	Othello, Washington	1979-1980
Bruce Burnett	Provo, Utah	1978-1979
Blake Buhler	American Fork, Utah	1977-1978
William Reese	Vernal, Utah	1976-1977
Mel Poulsen	Richfield, Utah	1975-1976
LaVerl Crosby	Provo, Utah	1974-1975
Randy Kidman	Ogden, Utah	1973-1974
Terry K. Holt	Brigham City, Utah	1972-1973

STUDENT BODY PRESIDENTS

(continued)

Ken Law	Springville, Utah	1971-1972
Norm Thorson	Provo, Utah	1970-1971
Richard L. Evans	Orem, Utah	1970-1971
Doug Wright	Provo, Utah	1969-1970
Bruce Smith	Orem, Utah	1968-1969
Gary Houser	Orem, Utah	1967-1968
Jim Tilson	Spanish Fork, Utah	1966-1967
Donald P. Fordham	Pleasant Grove, Utah	1965-1966
Chuck Goodyear	Indianapolis, Indiana	1964-1965
Glen LaVar Cox	Hinkley, Utah	1963-1964
Robert Button	Provo, Utah	1962-1963
Paul Hart	Orem, Utah	1961-1962
Duane Johnson	Showlow, Arizona	1960-1961
Duane Johnson	Showlow, Arizona	1959-1960
William Nuttall	Provo, Utah	1958-1959
James G. Goodman	Roy, Utah	1957-1958
Lynn Powell	Nephi, Utah	1956-1957
Blane Elton	Santaquin, Utah	1955-1956
Clark Jolley	Pleasant Grove, Utah	1954-1955
Calvin Davies	Panguitch, Utah	1953-1954
William H. White	Goshen, Utah	1952-1953

STUDENT BODY PRESIDENTS

(continued)

Mark Anderson	Provo, Utah	1951-1952
Bill Hales	Pocatello, Idaho	1950-1951
Thomas Donald Forsyth	Provo, Utah	1949-1950
Lee Russell Cardall	Salt Lake City, Utah	1948-1949
Mark H. Nilsen	Provo, Utah	1947-1948
Don A. Taylor	Spanish Fork, Utah	1946-1947

Source: Utah Valley Community College, Office of the Vice President for Student Services

TEACHER OF THE YEAR

1976-77	Elma Mack	1984-85	Douglas L. Jorgensen
1977-78	J. D. Davidson	1985-86	Wesley M. Bitters
1978-79	Rex Losee	1986-87	Kim I. Brewster
1979-80	Robert F. Steele	1987-88	Elma Mack
1980-81	Stephen M. Trane	1988-89	David O. Litchford
1982-83	James E. Barnes	1989-90	Barbra Ann Hoge
1983-84	Rulon J. Wells	1990-91	Larry B. Marsing
		1991-92	Del Shumway

EMPLOYEE OF THE YEAR

1985-86	Helen Kennington	1988-89	Craig Gappmayer
1986-87	Linda L. Makin		Ruth Broderick
1987-88	James L. Michaelis		Shelley Olsen
	Keith Barlow	1989-90	Kathleen Crawford
	Kenneth E. Mathews	1990-91	Terena Anderson
		1991-92	To be announced in December

ATHLETICS

FINAL RECORDS AND CONFERENCE FINISHES

	<u>1984-85</u>	<u>1985-86</u>	<u>1986-87</u>	<u>1987-88</u>	<u>1988-89</u>	<u>1989-90</u>	<u>1990-91</u>	<u>1991-92</u>
WOMEN								
Basketball	20-3 (1st)	25-1 (1st)	23-4 (1st)	23-4 (1st)	17-8 (5th)	26-4(1st)	29-3(1st)	26-3(1st)
Softball	19-16 (2nd)	19-14 (2nd)	27-8 (1st)	17-12 (1st)	22-17(1st)	20-6 (1st)	17-13(2nd)	30-18(1st)
Volleyball	25-6 (2nd)	30-8 (1st)	21-12 (2nd)	35-6 (1st)	26-5 (1st)	24-9(1st)	31-9 (2nd)	32-18(2nd)
Rodeo	3rd	4th	3rd	3rd	3rd	2nd	4th	3rd
MEN								
Basketball	18-12 (3rd)	21-11 (1st)	16-14 (5th)	22-10 (4th)	29-5 (2nd)	22-12(2nd)	22-9(2nd)	28-5(2nd)
Baseball	30-15 (1st)	18-19 (1st)	21-16 (2nd)	33-11 (1st)	26-15 (2nd)	20-17(1st)	27-23(2nd)	22-20(3rd)
Rodeo	3rd	2nd	2nd	3rd	1st	2nd	2nd	2nd

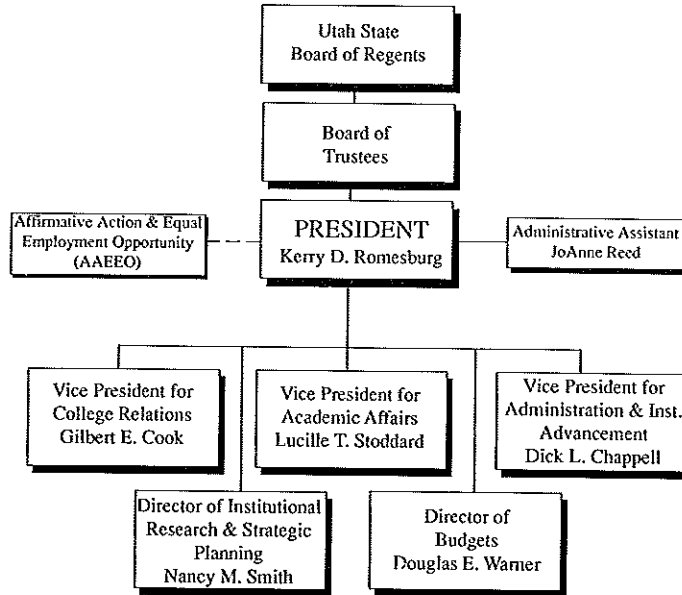
Source: Utah Valley Community College, Sports Information Director
 Utah Valley Community College, Rodeo Club

CONTENTS

ADMINISTRATION

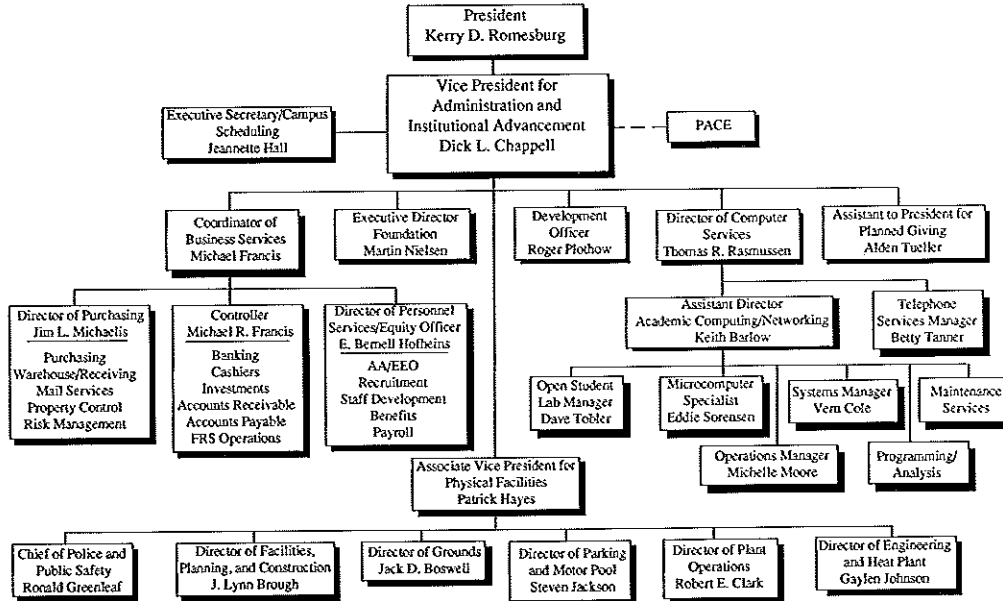
College Organizational Chart	20
Administration and Institutional Advancement (Organizational Chart)	21
College Relations (Organizational Chart)	22
Institutional Research and Strategic Planning (Organizational Chart)	23
Academic Affairs (Organizational Chart)	24
Budget Office (Organizational Chart)	27
Board of Trustees Members, Appointed as of June 16, 1992	28
Board of Trustees Chairs	29
Former Board of Trustees Members	30

Utah Valley Community College Organizational Chart



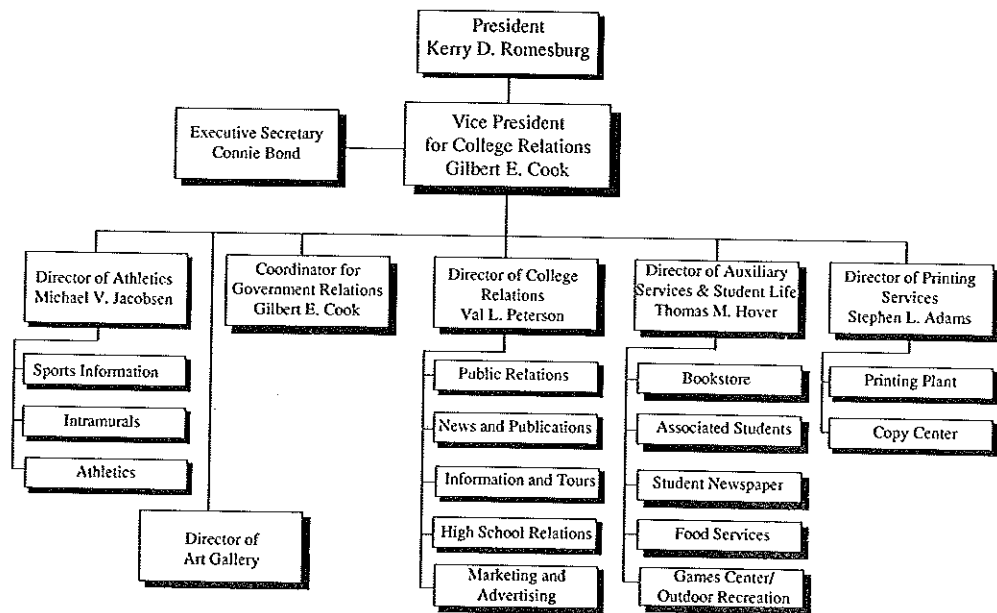
September 1992

Administration and Institutional Advancement



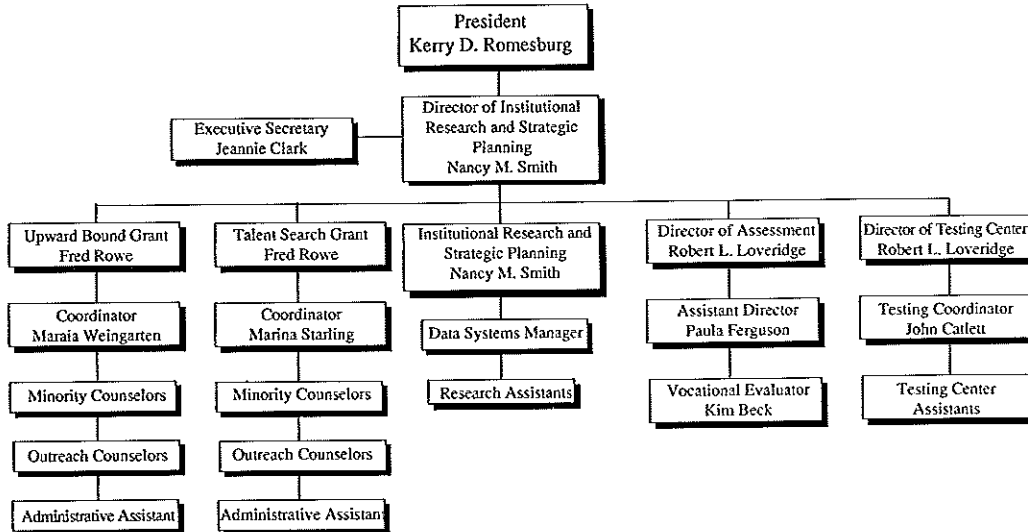
September 1992

College Relations



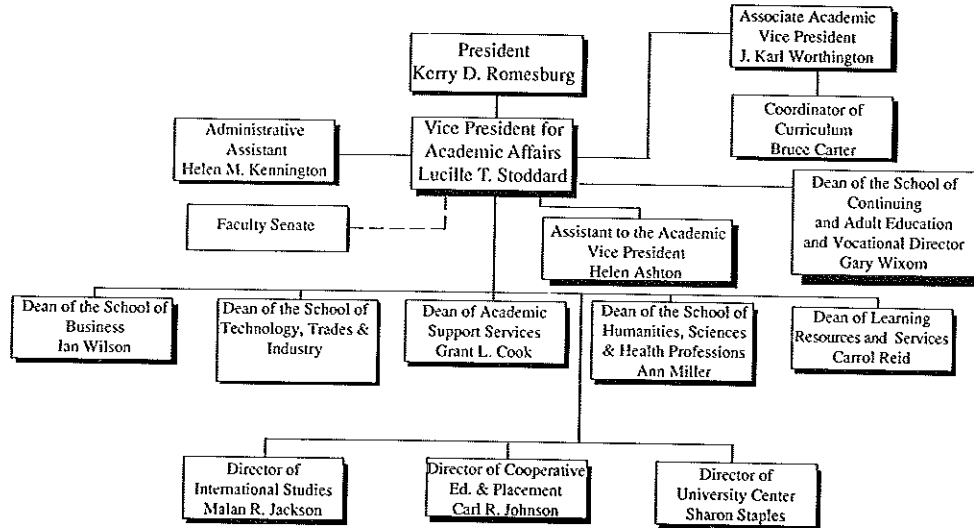
September 1992

Institutional Research and Strategic Planning



September, 1992

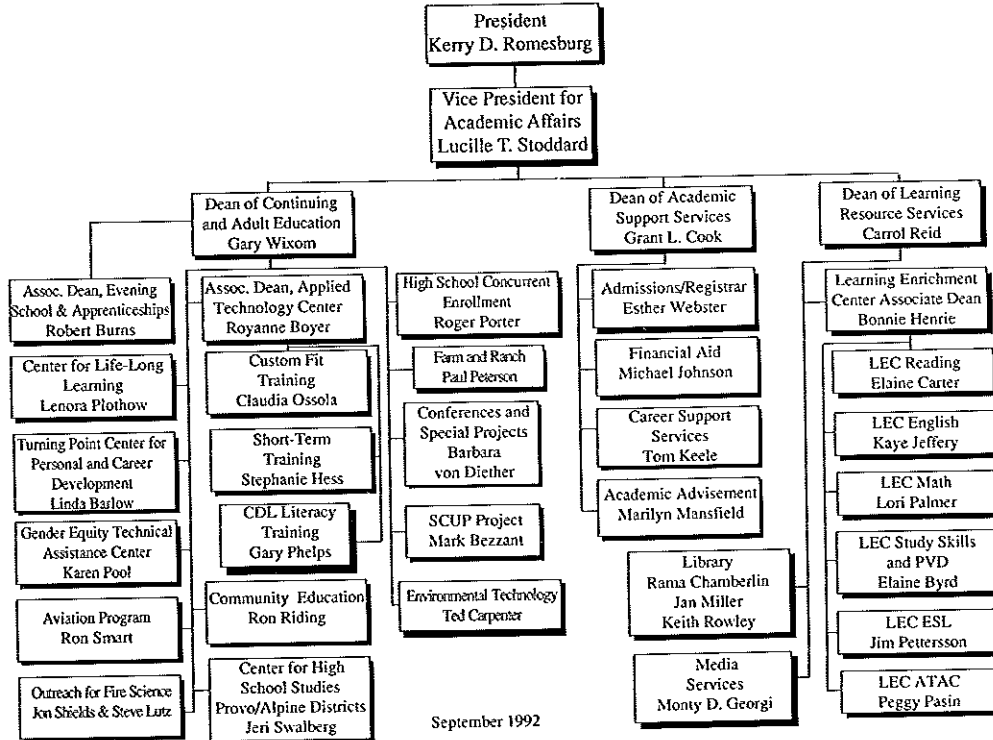
Academic Affairs



September 1992

Academic Affairs

(Continued)

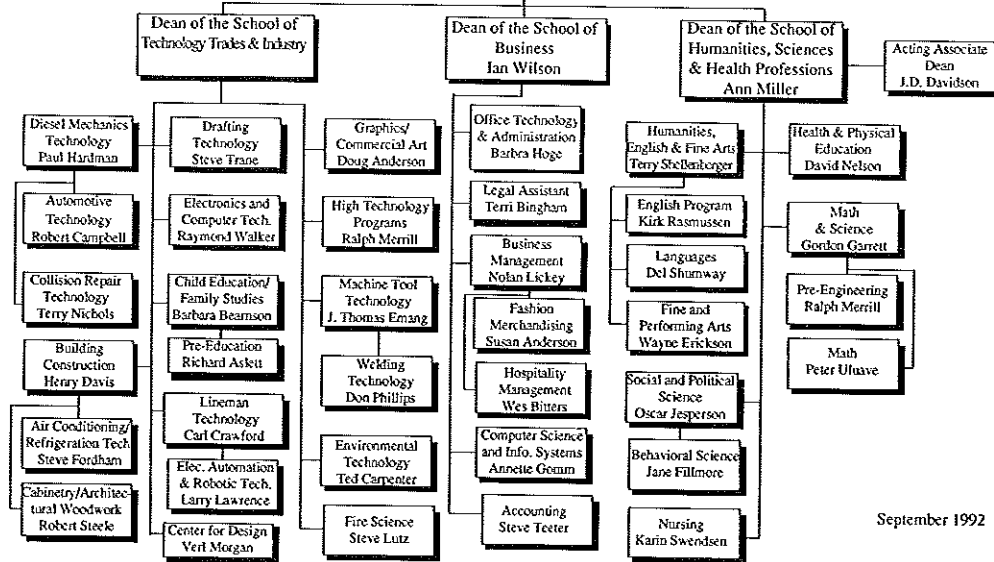


Academic Affairs

(Continued)

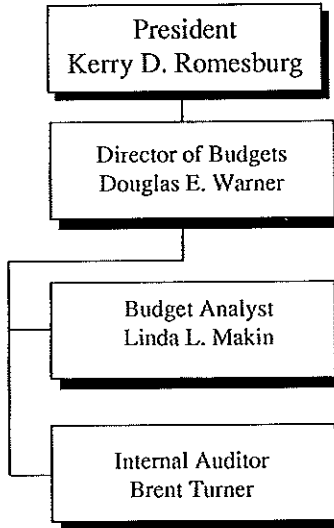
President
Kerry D. Romesburg

Vice President for
Academic Affairs
Lucille T. Stoddard



September 1992

Budget Office



September, 1992

BOARD OF TRUSTEES
Members Appointed by the Governor of Utah
as of June 16, 1992

<u>NAME</u>	<u>TERM EXPIRES</u>
Alan C. Ashton (Vice-Chair)	6/30/93
Joseph A. Cannon	6/30/93
Lawrence A. Haines	6/30/95
Ray M. Harding, Jr. (Chair)	6/30/95
Nancy M. Heuston	6/30/95
Gregory S. Nelson	6/30/93
DeLance W. Squire	6/30/93
Beth Tolbert	6/30/95
Paul Von Strahl	4/30/93
Mary Anne Q. Wood	6/30/93

Source: Utah Valley Community College, Office of the President

BOARD OF TRUSTEES CHAIRS

	<u>When Elected</u>
Ray Harding	August 1991
DeLance Squire	July 1989
Mary Anne Wood	September 1985
Howard Pace	July 1982
Charles Bates	July 1980
Grant Burgon	July 1978

FORMER BOARD OF TRUSTEES MEMBERS

Warren E. Bartel
Charles L. Bates
Kelly M. Bitters
Grant C. Burgon
Aileen Clyde
Brent DeMille
Bruce T. Griffin
David D. Halladay
Robert E. Halladay
David A. Jacobsen
Wm. Rolfe Kerr
Robert D. McDougall
Raymond J. Noorda
Margaret L. Nelson

Howard Pace
Kenneth C. Patey
Philip Perlman
Howard J. Ruff
Eris Y. Sumner
Boyd C. Sunderland
Jon Startup
Jay Weaver
Brent Welch
Deryn Young

Source: Utah Valley Community College, Office of the President

CONTENTS

FACULTY

Age Distribution of Full-Time Faculty by Degree and Gender, August 1992	31
Ethnic Distribution of Full-Time Faculty by Degree and Gender, August 1992	32
Universities Represented by Doctorates of Contract Faculty and Administrators, 1991-92	33

AGE DISTRIBUTION OF FULL-TIME FACULTY BY DEGREE AND GENDER

August 1992

	<u>26-30</u>	<u>31-35</u>	<u>36-40</u>	<u>41-45</u>	<u>46-50</u>	<u>51-55</u>	<u>56-60</u>	<u>Over 60</u>
Doctorate								
Male	1	1	4	1	8	4	2	2
Female		2	1	1		1		
Masters								
Male	1	6	6	9	14	19	10	2
Female	5	1	4	6	10	8	4	1
Bachelors								
Male		2	5	8	6	6	2	1
Female				2	1	4	2	
Associate								
Male	2	1	1	2	4	1	2	
Female								
No Degree								
Male		2	1	1	22	5		2
Female								
Total	9	15	22	30	65	48	22	8

Source: Utah Valley Community College, Personnel Office

ETHNIC DISTRIBUTION OF FULL-TIME FACULTY BY DEGREE AND GENDER

August 1992

	<u>American Indian Alask/Nat</u>	<u>Asian Pacific Islander</u>	<u>Black</u>	<u>Caucasian</u>	<u>Hispanic</u>	<u>Other</u>
Doctorate						
Male				2		1
Female				5		
Masters						
Male		3		62		
Female				37		
Bachelors						
Male			1	27		
Female				11		
Associate						
Male				14		1
Female						
No Degree						
Male				13		
Female						
Total Male		3	1	118		2
Total Female				67		

Source: Utah Valley Community College, Personnel Office

UNIVERSITIES REPRESENTED BY DOCTORATES OF CONTRACT FACULTY & ADMINISTRATORS

1991 - 1992

FACULTY

Aslett, Richard
Bingham, Terri C.
Bullock, Brent
Carey, Ernest
Chappell, Dick L.
Dosch, Edmond
Ellenberger, Suzanne
Fillmore, Jane
Garrett, Gordon B.
Gomm, Annette J. (Thomason)
Grcic, Joseph
Greer, Dennis
Hammond, Ronald
Harris, James G.
Jackson, Malan R.
Jenkins, Robert B.
Laughton, Barbara
Lehnardt, Eberhardt
Li, Ya
Loveridge, Robert L.
Luckenbach, Roger
Mecham, Harvey Dee
Merrin, Christine Rossi
Miller, Ann

UNIVERSITY

Brigham Young University
Brigham Young University
Brigham Young University
University of Hawaii
Columbia Pacific University
Columbia Pacific University
Oregon Graduate Center
Brigham Young University
University of Southern California
Oklahoma State University
University of Notre Dame
Utah State University
Brigham Young University
University of Alberta Edmonton
Arizona State University
Utah State University
University of California
Rice University
University of Utah
New Mexico State University
University of California
Brigham Young University
New Mexico State University
Kent State University

UNIVERSITIES REPRESENTED BY DOCTORATES OF CONTRACT FACULTY & ADMINISTRATORS

1991 - 1992

(continued)

FACULTY

Nield, John
Oyler, Edward Dee
Parker Bruce David
Perkins, Thomas
Peterson, Paul
Plothow, Roger H.
Rasmussen, Kirk
Raynes, Joseph L.
Richan, Frederic P.
Richards, Grant L.
Romesburg, Kerry D.
Shively, Michael
Shumway, Del K.
Silvia, Alfred
Smith, D.J.
Smith, Nancy M.
Spafford, Ann
Staples, Sharon L.
Stoddard, Lucille T.
Tayler, Paul L.
Tueller, Alden B.
Vawdrey, Colleen
Waldheim, George
Warner, Douglas E.

UNIVERSITY

Idaho State University
Brigham Young University
Utah State University
University of Utah
University of Missouri
Brigham Young University
University of Utah
Texas A & M University
University of Northern Colorado
Brigham Young University
Arizona State University
Purdue University
Washington University, St. Louis
University of Pittsburgh
University of Utah
Brigham Young University
Brigham Young University
University of Utah
Utah State University
University of Utah
University of California
Utah State University
California State University
Arizona State University

UNIVERSITIES REPRESENTED BY
DOCTORATES OF CONTRACT FACULTY & ADMINISTRATORS

1991 - 1992

(continued)

FACULTY

Whaley, Wayne
Wilson, Ian Kenneth
Wixom, Gary
Worthington, J. Karl

UNIVERSITY

Brigham Young University
University of Calgary
Brigham Young University
University of Iowa

Source: Utah Valley Community College, Personnel Office, Catalog

CONTENTS

ENROLLMENT

Headcount Enrollment, Fall Semester 1992	36
Full-Time Equivalent Enrollment, Fall Semester 1992	37
Enrollment Comparison - Annualized FTE Students (bar graph)	38
Average Credit Hours Per Student, Fall Semester 1992 (bar graph)	39
Enrollment History, Fall Semesters 1982-1992 (bar graph)	40
County Resident/Non-Resident Headcount, Fall Semesters 1986-1992	41
Resident/Non-Resident Headcount, Fall Semesters 1985-1992 (bar graph)	42
Utah System of Higher Education - Headcount Enrollment by Utah County Residency (bar graph)	43
Part-Time/Full-Time Headcount, Fall Semesters 1986-1992	44
Part-Time/Full-Time Headcount, Fall Semesters 1985-1992 (bar graph)	45
Headcount by Area of Study, Fall Semesters 1985-1992 (bar graph)	46
Average Credit Hours Per Student by School, Fall Semesters 1986-1992	47
Average Credit Hours Per Student, Fall Semesters 1985-1992 (bar graph)	48
Enrollment Comparison of Utah Colleges/Universities, Fall 1991	49

HEADCOUNT ENROLLMENT Fall Semester 1992

TOTAL HEADCOUNT 9623

Male	5174	54%		Freshmen	6872	71%
Female	4449	46%		Sophomores	2751	29%
Resident	8452	88%		Part-time	4791	50%
Non-resident	1171	12%		Full-time	4832	50%
				Vocational-Technical Majors	3427	36%
				General Studies Majors	6196	64%

Average Age 23.7

Source: Utah Valley Community College, Office of Institutional Research and Strategic Planning

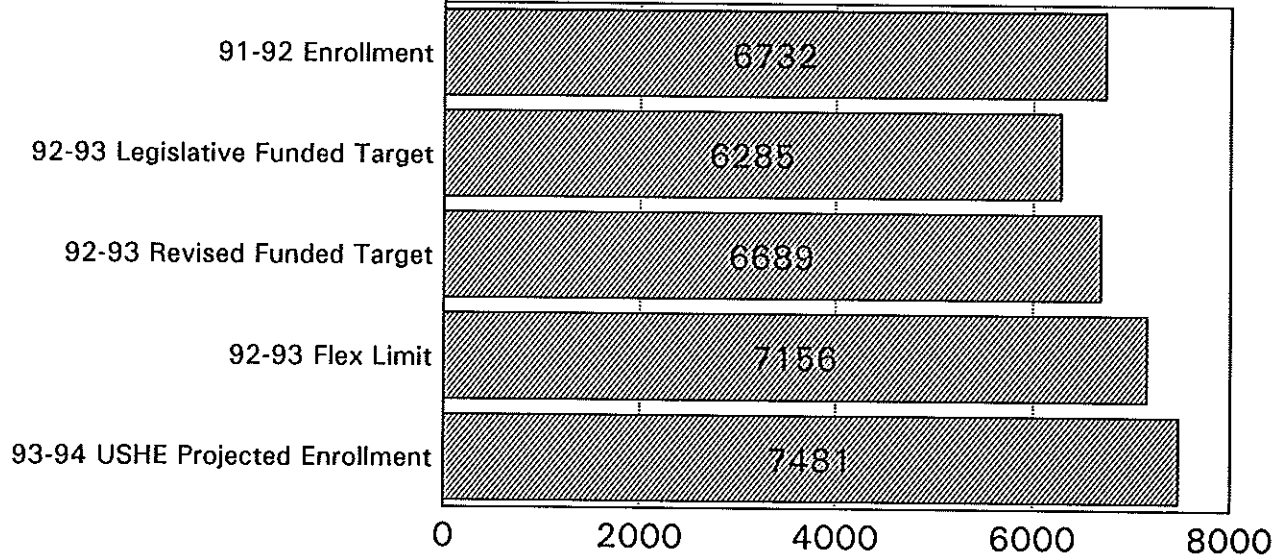
FULL-TIME EQUIVALENT ENROLLMENT Fall Semester 1992

TOTAL FULL-TIME EQUIVALENT (FTE)*	6586.4	
Vocational-Technical Majors	2318.8	35%
General Studies Majors	4267.6	65%
Residents	5679.4	86%
Non-residents	907.0	14%
Part-time	1126.5	17%
Full-time	5459.9	83%

*Full-time equivalent is the total number of credit hours in which students are enrolled divided by 15 (the credit hour load of a hypothetical "full-time" student).

ENROLLMENT COMPARISON

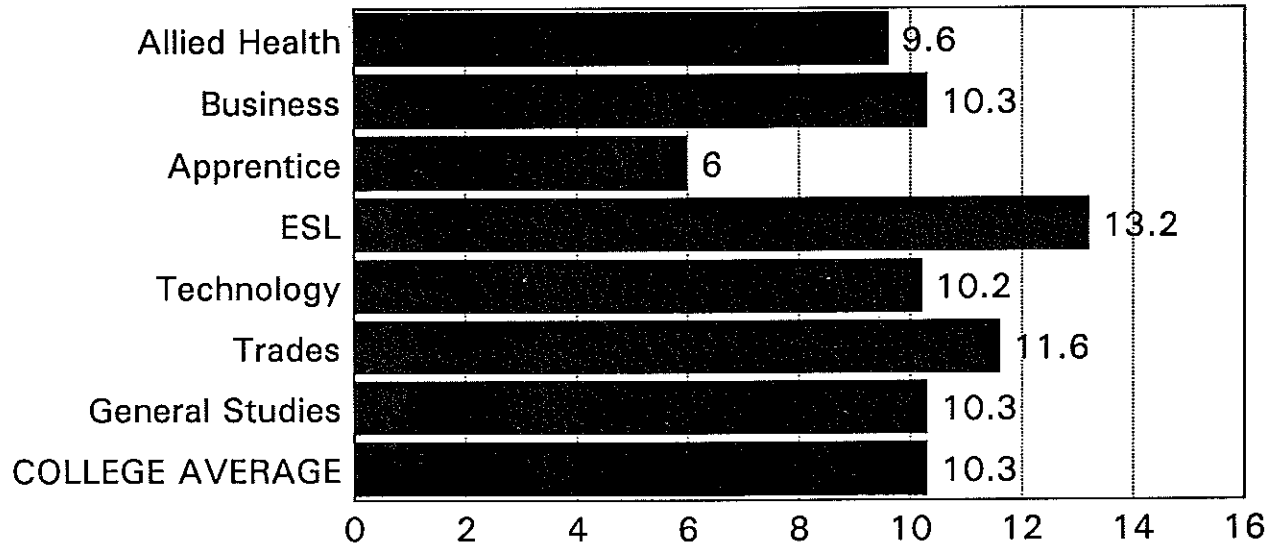
Annualized FTE Students



Source: Utah Valley Community College, Budget Office

AVERAGE CREDIT HOURS PER STUDENT

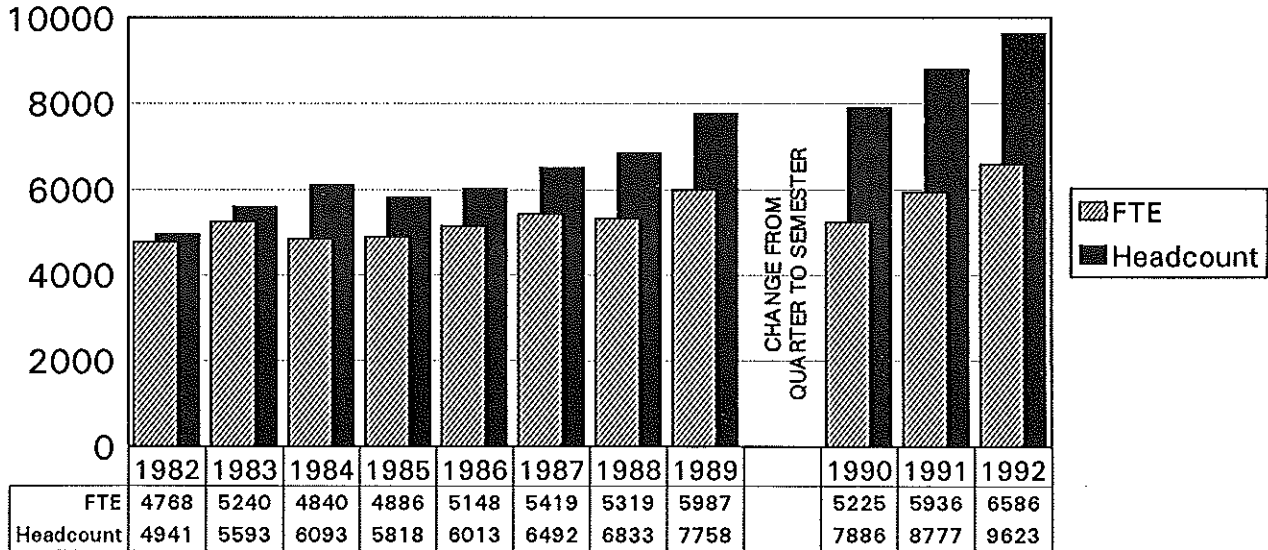
Fall Semester 1992



Source: Utah Valley Community College, Office of Institutional Research and Strategic Planning

ENROLLMENT HISTORY

Fall Semesters 1982 - 1992*



Source: Utah Valley Community College, Office of Institutional Research and Strategic Planning

*Fall 1982-1989 Quarters
40

COUNTY RESIDENT/NON-RESIDENT HEADCOUNT FALL SEMESTERS 1986-1992*

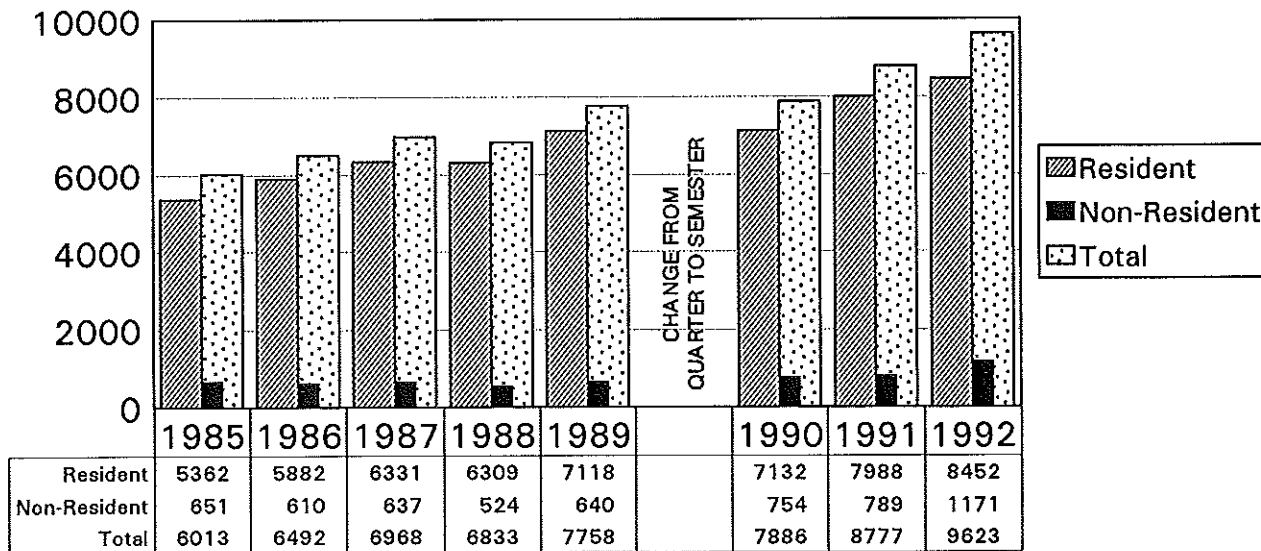
	<u>1986</u>	<u>1987</u>	<u>1988</u>	<u>1989</u>	<u>1990</u>	<u>1991</u>	<u>1992</u>
TOTAL	6,492	6,968	6,833	7758	7886	8777	9623
Resident	5,882	6,331	6,309	7118	7132	7988	8452
%	90	91	92	92	90	91	88
Utah County	NA	5,325	4,790	5245	5142	5623	5816
%		76	70	68	65	65	61
Salt Lake County	NA	255	274	292	286	464	397
%		4	4	4	4	5	4
Wasatch County	NA	90	96	116	90	104	112
%		1	1	1	1	1	1
Other Counties	NA	661	1,149	1465	1614	1797	2127
%		9	17	19	20	20	22
Non-resident	610	637	524	640	754	789	1171
%	9	9	8	8	10	9	12
Other States	448	506	433	460	548	670	831
%		7	6	6	7	8	8
Foreign	162	131	91	180	206	119	340
%	3	2	1	2	3	1	4

*Fall 1986-1989 Quarters

Source: Utah Valley Community College, Office of Institutional Research and Strategic Planning

RESIDENT/NON-RESIDENT HEADCOUNT

Fall Semesters 1985 - 1992*

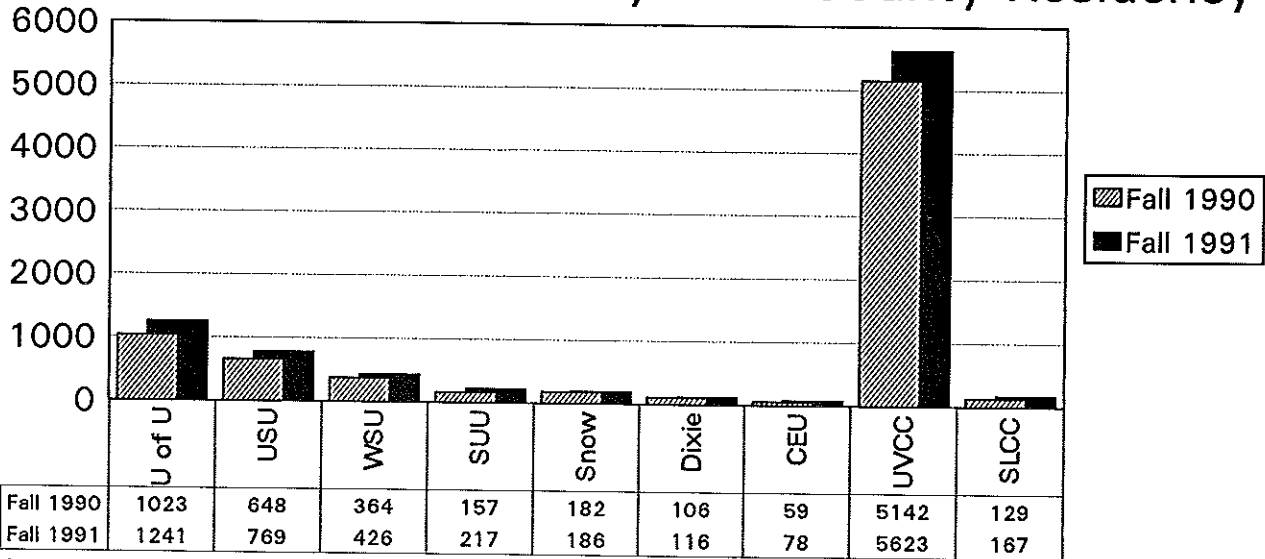


Source: Utah Valley Community College, Office of Institutional Research and Strategic Planning

*Fall 1985 - 1989 Quarters

UTAH SYSTEM OF HIGHER EDUCATION

Headcount Enrollment by Utah County Residency



Source: Utah Valley Community College, Budget Office

PART-TIME/FULL-TIME HEADCOUNT - FALL SEMESTERS 1986-1992*

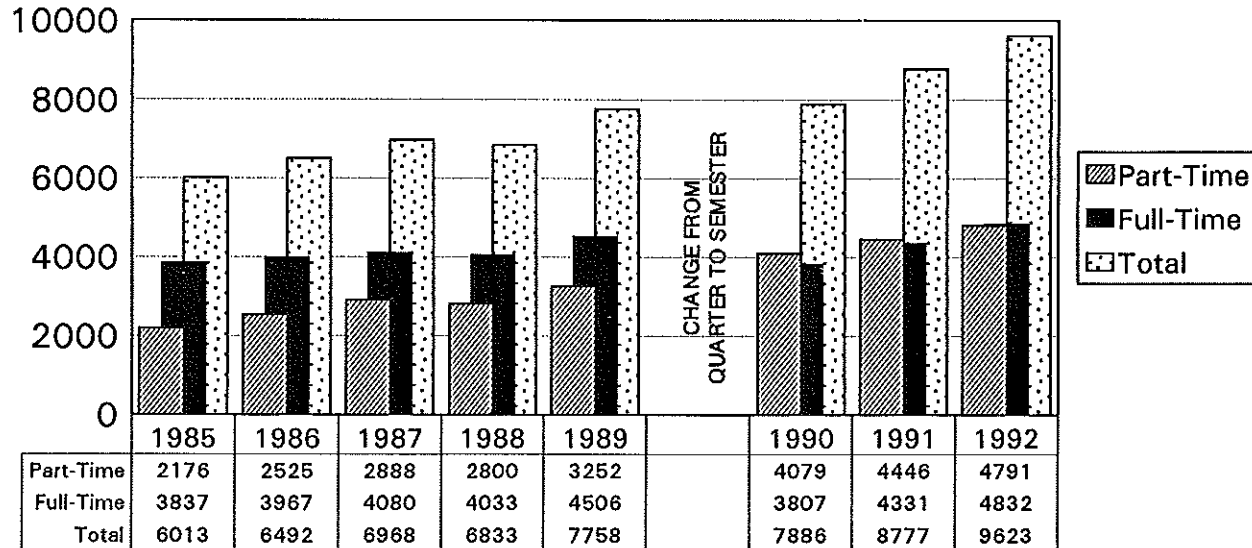
	<u>1986</u>	<u>1987</u>	<u>1988</u>	<u>1989</u>	<u>1990</u>	<u>1991</u>	<u>1992</u>
TOTAL	6,492	6,968	6,833	7,758	7886	8777	9623
Part-time	2,525	2,888	2,800	3,252	4079	4446	4791
< 7 hours	1,144	1,387	1,337	1,473	2209	2448	2461
7 - 11 hours	1,381	1,501	1,463	1,779	1870	1998	2330
Full-time	3,967	4,080	4,033	4,506	3807	4331	4832
12 hours	545	556	604	695	1525	1369	1544
13 hours	771	682	661	787	851	941	1084
14 hours	473	423	442	543	468	657	778
15 hours	812	1,163	1,194	1,350	422	582	619
16 hours	366	372	320	382	271	374	373
17 hours	237	211	237	160	110	217	242
18 hours	341	268	246	247	74	89	119
19 hours	135	162	86	103	34	30	45
20 hours	146	135	141	120	19	31	18
> 20 hours	141	108	102	119	33	41	10

*Fall 1986-1989 Quarters

Source: Utah Valley Community College, Office of Institutional Research and Strategic Planning

PART-TIME/FULL-TIME HEADCOUNT

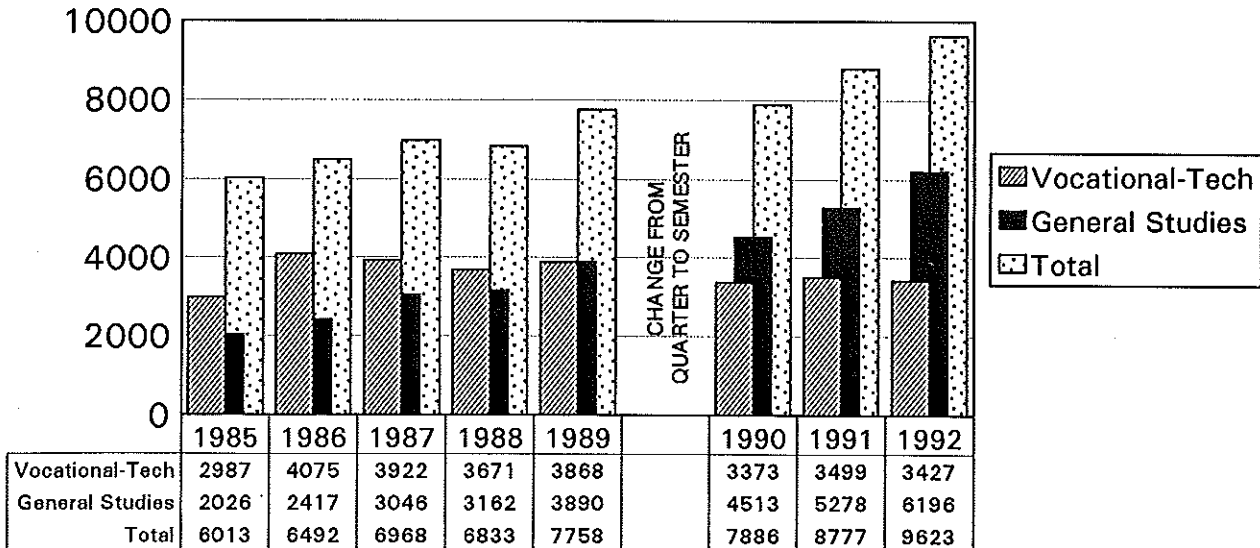
Fall Semesters 1985 - 1992*



Source: Utah Valley Community College, Office of Institutional Research and Strategic Planning *Fall 1985 - 1989 Quarters

HEADCOUNT BY AREA OF STUDY

Fall Semesters 1985 - 1992 *



Source: Utah Valley Community College, Office of Institutional Research and Strategic Planning

*1985 - 1989 Quarters
46

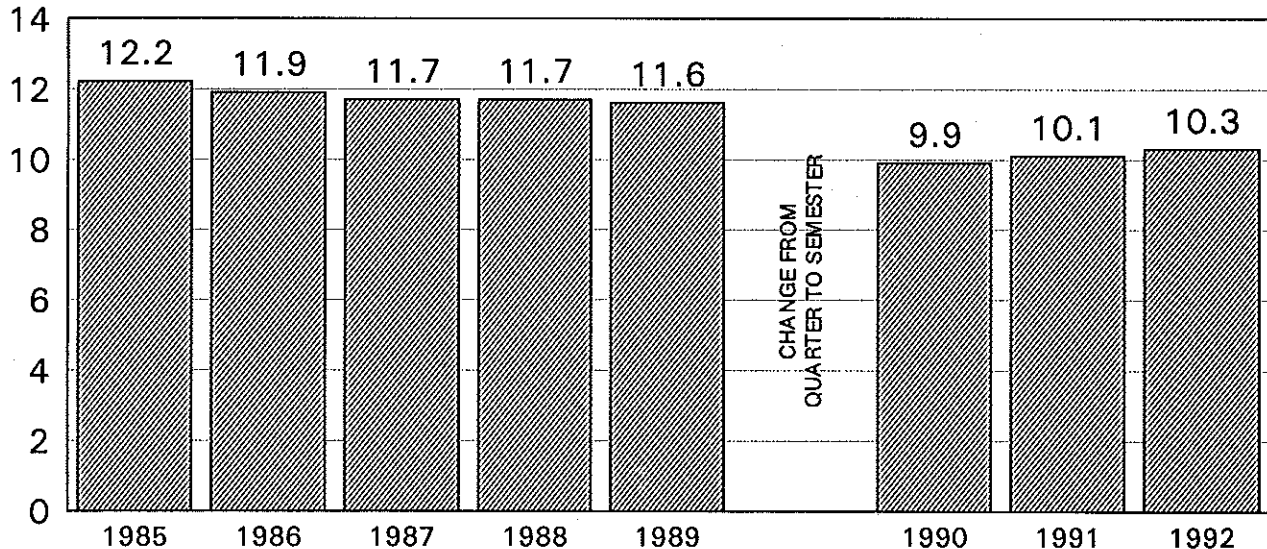
AVERAGE CREDIT HOURS PER STUDENT BY SCHOOL
Fall Semesters 1986 - 1992*

<u>SCHOOL OF</u>	<u>1986</u>	<u>1987</u>	<u>1988</u>	<u>1989</u>	<u>1990</u>	<u>1991</u>	<u>1992</u>
Allied Health	12.9	12.6	12.9	11.9	9.7	9.6	9.6
Business	11.4	11.2	11.2	11.3	9.8	10.1	10.3
Apprentice	6.8	6.2	6.6	7.0	5.0	4.7	6.0
General Studies	11.5	11.3	11.8	11.5	10.0	10.2	10.3
Learning Enrichment	12.5	12.0	11.5	11.8	11.4	11.8	13.2
Technology	13.7	13.7	11.4	11.5	9.7	10.8	10.2
Trades	13.3	13.2	13.6	13.4	11.2	10.1	11.6
 College Average	 11.9	 11.7	 11.7	 11.6	 9.9	 10.1	 10.3

*Fall 1986-1989 Quarters

AVERAGE CREDIT HOURS PER STUDENT

Fall Semesters 1985 - 1992*



Source: Utah Valley Community College, Office of Institutional Research and Strategic Planning

*1985 - 1989 Quarters
48

ENROLLMENT COMPARISON OF UTAH UNIVERSITIES AND COLLEGES

FALL 1991

<u>University/College</u>	<u>Headcount</u>	<u>FTE</u>
University of Utah	26,637	20,575
Utah State University	16,531	12,732
Weber State University	14,432	10,566
Southern Utah University	4,293	3,515
Salt Lake Community College	15,972	9,767
Utah Valley Community College*	8,777	6,067
Dixie College	2,963	2,398
College of Eastern Utah	2,766	1,833
Snow College	2,553	2,198

*Utah Valley Community College changed to Semesters, Fall 1990.

Source: Utah System of Higher Education, 1992-93 Data Book

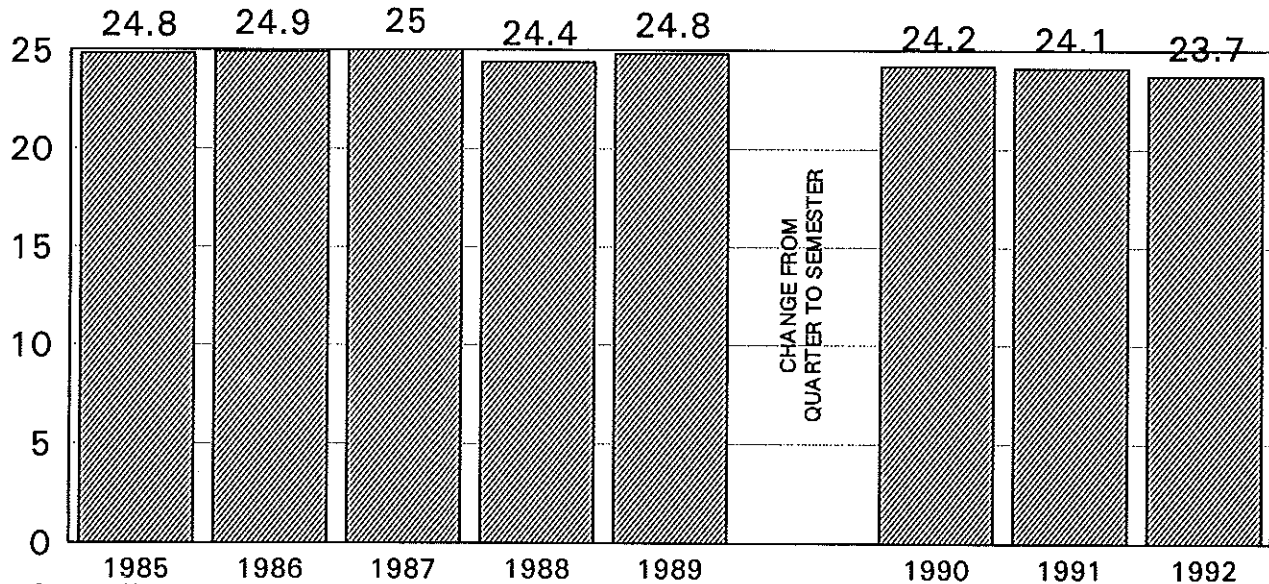
CONTENTS

STUDENT PROFILE

Mean Age of Students, 1985-1992 (bar graph)	50
Headcount Distribution by Age - Fall 1986-1992	51
Headcount Distribution by Ethnic Group - Fall 1986-1992	52
Male/Female Headcount - Fall 1985-1992 (bar graph)	53
Geographic Origin of Students, United States - Fall 1992 (map)	54
Geographic Origin of Students, United States - Fall 1992	55
Citizenship of Foreign Students - Fall 1992 (map)	59
Citizenship of Foreign Students - Fall 1992	60
Graduate Degrees and Certificates Awarded 1990-91 and 1991-92	64

MEAN AGE OF STUDENTS

Fall Semesters 1985 - 1992*



Source: Utah Valley Community College, Office of Institutional Research and Strategic Planning, Fall 1985 - 1989 Quarters

HEADCOUNT DISTRIBUTION BY AGE FALL SEMESTERS 1986-1992 *

	<u>1986</u>	<u>1987</u>	<u>1988</u>	<u>1989</u>	<u>1990</u>	<u>1991</u>	<u>1992</u>
TOTAL	6,492	6,968	6,833	7758	7886	8777	9623
Under 19 years	855	969	1,032	1,244	1288	1378	2023
19-20 years	1,214	1,362	1,405	1,643	1684	1842	1808
21-22 years	1,126	1,215	1,273	1,405	1401	1702	1911
23-24 years	846	884	871	1,023	1053	1184	1167
25-29 years	1,129	1,107	1,009	1,156	1120	1225	1261
30-34 years	587	584	535	526	556	629	597
35-39 years	331	353	297	351	366	363	388
Over 39 years	382	488	395	408	408	450	468
Unknown	22	6	16	2	12	4	0
Mean Age	24.9	25.0	24.4	24.8	24.2	24.1	23.7

*Fall 1986-1989 Quarters

Source: Utah Valley Community College, Office of Institutional Research and Strategic Planning

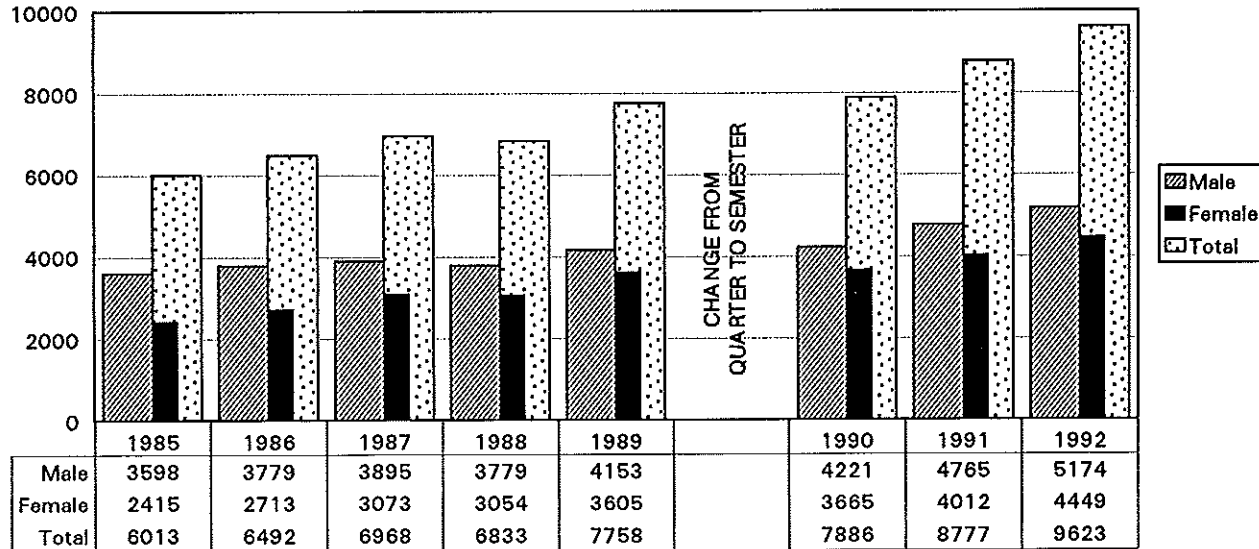
HEADCOUNT DISTRIBUTION BY ETHNIC GROUP Fall Semesters 1986 - 1992*

	<u>1986</u>	<u>1987</u>	<u>1988</u>	<u>1989</u>	<u>1990</u>	<u>1991</u>	<u>1992</u>
Total	6492	6968	6833	7758	7886	8777	9623
White	5934	6452	6341	7205	7280	8103	8839
Hispanic	138	142	122	169	186	218	204
Asian-Islander	118	110	90	92	104	133	138
American Indian	103	111	112	97	91	97	85
Black	5	6	9	15	19	15	17
Non-Resident Alien	194	147	159	180	206	211	340

*Fall 1986-1989 Quarters

MALE/FEMALE HEADCOUNT

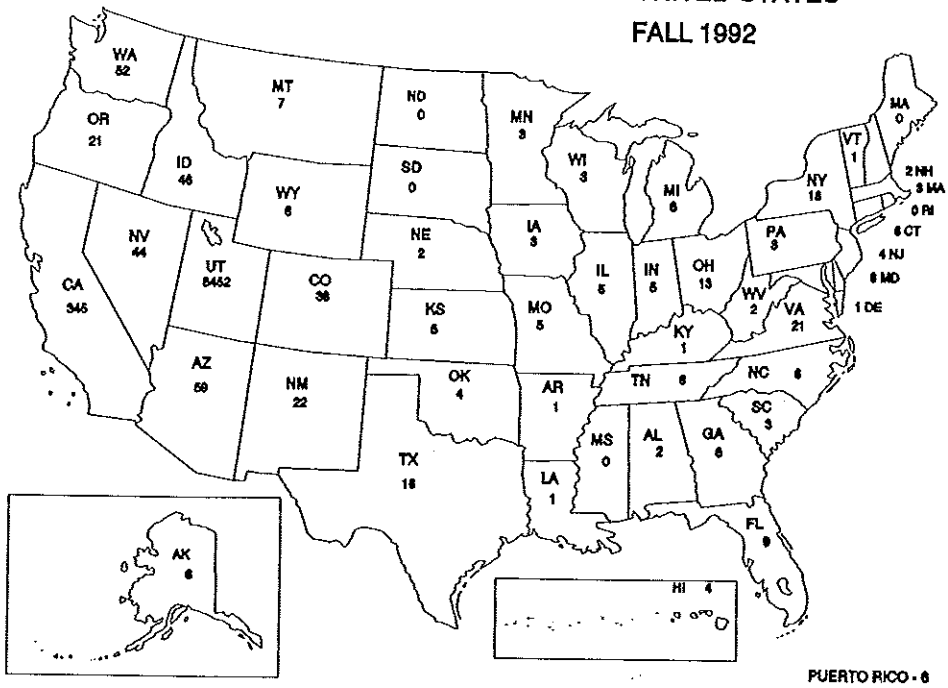
Fall Semesters 1985 - 1992*



Source: Utah Valley Community College, Office of Institutional Research and Strategic Planning *Fall 1985 - 1989 Quarters

GEOGRAPHIC ORIGIN OF STUDENTS - UNITED STATES

FALL 1992



Source: Utah Valley Community College, Office of Institutional Research and Strategic Planning

**GEOGRAPHIC ORIGIN OF STUDENTS
FALL 1990-1992
UNITED STATES**

<u>States Represented</u>	<u>1990</u>	<u>1991</u>	<u>1992</u>
Alabama	1	2	2
Alaska	18	5	6
Arizona	98	134	59
Arkansas	5	5	1
California	413	497	345
Colorado	57	68	38
Connecticut	4	13	6
Delaware	0	0	1
Florida	39	30	9
Georgia	8	15	6
Hawaii	11	12	4
Idaho	117	123	46
Illinois	23	25	5
Indiana	8	10	5
Iowa	7	5	3
Kansas	11	10	5
Kentucky	2	5	1

**GEOGRAPHIC ORIGIN OF STUDENTS
FALL 1990-1992
UNITED STATES**

(continued)

<u>States Represented</u>	<u>1990</u>	<u>1991</u>	<u>1992</u>
Louisiana	5	12	1
Maine	3	2	0
Maryland	10	11	8
Massachusetts	5	4	2
Michigan	20	16	6
Minnesota	11	13	3
Mississippi	1	3	0
Missouri	17	15	5
Montana	21	24	7
Nebraska	2	1	2
Nevada	34	52	44
New Hampshire	1	2	2
New Jersey	9	15	4
New Mexico	28	34	22
New York	21	20	18
North Carolina	7	6	6

**GEOGRAPHIC ORIGIN OF STUDENTS
FALL 1990-1992
UNITED STATES**

(continued)

<u>States Represented</u>	<u>1990</u>	<u>1991</u>	<u>1992</u>
North Dakota	1	0	0
Ohio	16	22	13
Oklahoma	8	13	4
Oregon	40	54	21
Pennsylvania	13	17	3
Puerto Rico	13	7	4
Rhode Island	1	0	0
South Carolina	9	16	3
South Dakota	24	3	0
Tennessee	12	8	8
Texas	53	60	16
Utah	6268	6808	8452
Vermont	2	1	1
Virgin Islands	1	1	0
Virginia	16	6	21
Washington	92	92	52

**GEOGRAPHIC ORIGIN OF STUDENTS
FALL 1990-1992
UNITED STATES**

(continued)

<u>States Represented</u>	<u>1990</u>	<u>1991</u>	<u>1992</u>
West Virginia	2	5	2
Wisconsin	10	6	3
Wyoming	26	31	8

Source: Utah Valley Community College, Office of Institutional Research and Strategic Planning

CITIZENSHIP OF STUDENTS - FALL 1992



Source: Utah Valley Community College, Office of Institutional Research and Strategic Planning

CITIZENSHIP OF FOREIGN STUDENTS
Fall 1990-1992

<u>Countries Represented</u>	<u>1990</u>	<u>1991</u>	<u>1992</u>
Argentina	4	7	10
Austria	1	0	0
Australia	3	5	5
Barbados	0	1	1
Belgium	3	4	1
Belize	0	1	0
Bolivia	3	4	3
Brazil	6	7	5
Bulgaria	0	0	1
Cameroon	1	1	0
Canada	41	51	56
Chile	4	5	4
China	0	2	6
Columbia	2	0	0
Costa Rica	4	5	3
Denmark	2	1	1
Dominican Republic	0	5	5
Ecuador	7	1	4
El Salvador	1	2	2

CITIZENSHIP OF FOREIGN STUDENTS

Fall 1990-1992

(continued)

<u>Countries Represented</u>	<u>1990</u>	<u>1991</u>	<u>1992</u>
England	3	4	4
Finland	0	0	1
France	1	2	1
Germany	5	5	2
Grenada	1	4	1
Guatemala	1	2	9
Haiti	1	1	1
Honduras	0	7	8
Hong Kong	6	7	10
India	5	1	0
Indonesia	6	7	0
Iran	1	1	0
Israel	0	2	0
Italy	4	2	0
Jamaica	1	1	1
Japan	51	64	86
Jordan	0	0	3
Korea	2	4	16
Kuwait	1	2	0

CITIZENSHIP OF FOREIGN STUDENTS

Fall 1990-1992

(continued)

<u>Countries Represented</u>	<u>1990</u>	<u>1991</u>	<u>1992</u>
Lebanon	0	0	1
Malaysia	2	1	0
Mexico	13	15	30
Morocco	1	1	0
New Caledonia	0	1	0
New Zealand	1	1	0
Nicaragua	0	1	0
Norway	0	0	2
Panama	1	2	6
Paraguay	0	1	0
Peru	7	5	4
Philippines	1	0	1
Poland	0	0	1
Portugal	2	1	0
Scotland	1	1	0
Singapore	1	0	1
South Africa	1	1	0
Soviet Union	0	0	1
Spain	3	2	5

CITIZENSHIP OF FOREIGN STUDENTS

Fall 1990-1992

(continued)

<u>Countries Represented</u>	<u>1990</u>	<u>1991</u>	<u>1992</u>
Sri Lanka	0	1	0
Sudan	1	0	0
Sweden	2	1	4
Switzerland	2	2	2
Taiwan	14	10	16
Thailand	14	2	7
Togo	1	0	0
Tonga	1	1	0
Uganda	2	1	0
United Arab Emirates	0	1	0
Uruguay	0	0	1
Venezuela	6	6	4
Vietnam	1	0	1
West Indies	4	7	3
Western Samoa	1	0	0
Zaire	1	1	0

Source: Utah Valley Community College, Office of Institutional Research and Strategic Planning

GRADUATE DEGREES & CERTIFICATES AWARDED
1990-1991 and 1991-1992 School Years

	<u>1990-91</u>	<u>1991-92</u>
Associate of Science	283	331
Associate of Science in Nursing	37	38
Associate of Arts	19	47
Associate in Applied Science	257	314
Diploma	57	34
One-Year Certificate	189	156
Two-Year Certificate	0	0
TOTAL	878	920

Source: Utah Valley Community College, Graduation Office

CONTENTS

SUPPORT ORGANIZATIONS

Faculty Senate Presidents	65
Ace/Pace Presidents	65
Utah Valley Community College Foundation Board, 1992-1993	66
Utah Valley Community College Foundation Board Members	67
Utah Valley Community College Alumni Association Board of Directors, 1992-1993	68
Advisory Committees, Accounting, Air Conditioning and Refrigeration Technology, Automotive Technology, Aviation Science, Building Construction & Construction Management, Business Management, Cabinetry and Architectural Woodwork, Child Education & Family Studies	69
Advisory Committees, Collision Repair, Computer Science & Information, Culinary Arts, Diesel Mechanics, Drafting	70
Advisory Committees, Education, Electrical Automation, Electronics & Computer Technology, Environmental Technology	71
Advisory Committees, Fashion Merchandising, Finance and Banking, Fire Science, Graphics Commercial Art, Hospitality Management, Human Services	72
Advisory Committees, International Business, Legal Assistant, Lineman Technology, Machine Tool Technology, Nursing	73
Advisory Committees, Office Technology Administration, Physical Plant Management, Professional Driving, Welding	74

CONTENTS

SUPPORT ORGANIZATIONS (continued)

Clubs and Organizations, Alpha Kappa Epsilon, CCDC, Campus Venture, CAS-CASP	75
Clubs and Organizations, Cheerleaders, Chess, Cogito Ergo Pingo, Computer Club, DEX, Drafting Club	76
Clubs and Organizations, Ecumenical College Fellowship, Environmental Club, French Club, GAIA, German Club	77
Clubs and Organizations, Hewlett Packard, Intercollegiate Knights, International Student Club, Jipang, Karate Club, Lambda Delta Sigma,	78
Clubs and Organizations, LAUSA, Law Society, LDSSA, Math, MIDImuse, Native American Student Club	79
Clubs and Organizations, Outdoor Recreation and Rentals, Phi Beta Lambda, Phi Theta Kappa, Polynesian Club, Progressive Club	80
Clubs and Organizations, Racquetball, Rainbow Club, Rodeo Club, Russian Club, Sigma Gamma Chi, Ski Club	81
Clubs and Organizations, Soccer, Student Literary Publications Club, Synergy, The College Times, VICA, USU/UVCC IMA	82
Clubs and Organizations, Utah Valley Collegiate Aero Club, Utah Valley Cyclists, UVCC Ballroom Dance Company, Women's Connection	83

FACULTY SENATE PRESIDENTS

1976-77	Stephen M. Trane	1984-85	Kenneth M. Foster
1977-78	Stephen L. Adams	1985-86	Larry B. Marsing
1978-79	Douglas E. Warner	1986-87	F. Dennis Farnsworth
1979-80	Russell C. Black	1987-88	Barbra Ann Hoge
1980-81	Robert F. Steele	1988-89	Orrin A. Nelson
1981-82	Kenneth M. Foster	1989-90	J. D. Davidson
1982-83	J. D. Davidson	1990-91	Bonnie G. Henrie
1983-84	Wesley M. Bitters	1991-92	Del Shumway
		1992-93	Douglas Bradley

Source: Utah Valley Community College, Faculty Senate Minutes

ACE/PACE PRESIDENTS

1982-83	ACE	Michael H. Johnson	1987-88	PACE	Evan A. Frampton
1983-84	ACE	Barbara Dabbling	1988-89	PACE	Thomas R. Rasmussen
1984-85	ACE	Duane Jacobs	1989-90	PACE	Noel C. Lyman
1985-86	ACE	Lucile M. Steele	1990-91	PACE	Michael V. Jacobsen
1986-87	ACE	Linda L. Makin	1991-92	PACE	Leah J. Holt
			1992-93	PACE	Michael L. Jones

Source: Utah Valley Community College, Office of Institutional Research and Strategic Planning

UTAH VALLEY COMMUNITY COLLEGE FOUNDATION BOARD

1992 - 1993

G. William Aaron, Vice Chairman
Bill J. Anderson
Louise Clyde
Wilford W. Clyde
Stanley E. Collins
Ronald J. Dallin
DeVere Fowler
David D. Halladay
Renee Nelson, Secretary
H. Don Norton, Treasurer
David W. Reeves
Neal Savage, Chairman
Marion O. Snow

Business: Merrill Lynch
Business Consultant
Retired
Geneva Rock
Shearson Lehman Brothers
Storehouse Markets
Fowler Company
First Security Bank of Utah
The Daily Herald
Far West Bank
Beneficial Life Insurance
Savage Brothers
MST Trucking, Inc.

Source: Utah Valley Community College, Development Office

UTAH VALLEY COMMUNITY COLLEGE FOUNDATION BOARD MEMBERS

1992 - 1993

Ray Bartholomew
David Bradford
Donald J. Butler
Ron Clark
Leonard R. Ellis
Dr. Roy Hammond, Sr.
J. Marvin Higbee
Mark J. Howard
Jeffrey Kahn
Douglas Nielson
David K. Palfreyman
Max Pinegar
Ben Shippen
Joe Squire
Maria Vargas
Firle J. Wilkins
Karl A. Wrigley

Merrill Bateman
Neal Bullock
Joe Cannon
Steven R. Covey
Robert Grow
Ron Hawkins
Hal Holmstead
Blaine T. Hudson
Robert Mendenhall
Joseph Ollivier
Russell Park
Florence Ragan
Wilson W. Sorensen
Mark Sumsion
Mark Vernon
Hal Wing
Allen Young

Roger Bjarnson
Merrill Bushnell
Homer C. Chandler
H. Clyde Davis
David Gunther
Gary R. Herbert
Doug Horne
Merlynn K. Jones
Norman Nielsen
Glen A. Overton
Ed Pinegar
Steven Shallenberger
LaVorn Sparks
Paul Sybrowsky
Steve Watts
Steve Winn

**UTAH VALLEY COMMUNITY COLLEGE
ALUMNI ASSOCIATION BOARD OF DIRECTORS
1992 - 1993**

William A. Brown, President Elect	Business:	Pepsi Cola - 7-Up Bottling Company
Blake Buhler		NOAH
Sheila Christensen, Treasurer		UVCC - Office Administration
Geri Clements		
Brent J. DeMille		Mansell & Associates Realty
Candice Elton		
Kerry Graves		Service Master
David D. Halladay, Past President		First Security Bank
Randy S. Kester		Attorney at Law
Greg Nelson, President		Magnetic Research, Inc.
John Pack		Johnny B's Comedy Club
Tom Rasmussen		UVCC - Computer Center
Jon W. Startup		Startup Candy Company
Don A. Taylor		
Paul Von Strahl		UVCC - Studentbody President
Lisa Warner		
Polly Weenig		UVCC - Registration Office

Source: Utah Valley Community College, Development Office

ADVISORY COMMITTEES

1992 - 1993

Accounting

Joe Squire - Chairman
Lois Anderson
Steve Densley
Diane Hicken
Dr. Dee Hubbard
Gene Hughes
C. Joseph Rowberry
Mercedes Smith
Lewis Tippets
Kelly Ward

Air Cond & Refrig

Technology

Gaylen Atkinson
Richard Carmen
Thoral Collings
Dean Gunther
Bob Remund

Automotive Technology

Chuck Barber
Chris Bassett

Automotive (cont)

Phil Crockett
Melvin Ferguson
Clay Liston
Jim MacFarland

Aviation Science

Bruce Carter
Lowell Call
Michael Falgoust
Jim Mathis
Richard Nye

Building Const & Const Mgt

Russ Berry
John Dester
Bill Fairbanks
Robert Hansen

Business Management

William Anderson
Ladd Black
Mac Boyer

Business Mgt (cont)

Brent DeMille
Ken Fakler
Kelly Liljenquist
Tim Morris
Brad Mortenson
Jon Startup
Ron Tiffany

Cabinet & Archit

Woodwork

David Barlow
Richard Fetzer
Markay Johnson

Child Ed./Family Studies

Rudy Anderson
Ann Austin
Harvey Hirschi
RoniLynn Jenkins
Kathy Luke
Ireta Midgley
Diane Pace

ADVISORY COMMITTEES

1992 - 1993

(continued)

Child Ed./Family (cont)

Luana Searle
Anita Spainhower
Sterling Swensen
Cheryl Wright

Collision Repair Technology

Dean Hood
Bruce Keetch
Ronald Lourenco
Robin Roberts
Steve Whitlock

Computer Science & Info
Systems

Richard Hodson - Chairman
Lois Anderson
Alan Ashton
Elaine Bonham
Richard Bradford
Steve Carter

Computer (cont)

Alan Dixon
Lee Murdock
Brett Parkinson
Norm Wright

Culinary Arts

Kim Anderson
Tracy Erdmann
Wayne Griffin
Rico Renzetti
Glen Sandberg
Len Thompson
Marilyn Thorne
Mark Steaner

Diesel Mechanics
Technology

Kurt Burningham
John Crandall
Ron Dallinga

Diesel (cont)

Albert Harmer
Don Jones
Ernest Parkin

Drafting Technology

Mechanical Drafting
Jerry Barker
Ephraim J. Escamilla
Bryan L. Jacobson
Mike Kipp
Dan Olson

Surveying

Larry Buss
Donald C. Cole
Clyde Naylor
John Stahl
Al York

ADVISORY COMMITTEES

1992 - 1993

(continued)

Structural Drafting

Terry L. Beighley
David Patten
Max Powell

Architectural Drafting

Guilford Rand
Lee C. Knell
Eric Sandstrom
George Olson
David Markham

Education

Rudy Anderson
Ann Austin
Kathy Luke
Luana Searle
Anita Spainhower
Sterling Swenson
Cheryl Wright

Elect Auto Technology

O. Dewey Bennett
Richard Bogus
Bernard Cope
Howard Eves
Boyd Miner
Peter Pennarts
Anton Tonc
Rulon Wells

**Electronics & Computer
Technology**

Tony Coates
Bill Gillman
John Greenhalgh
Mark Hoyt
Stephen Jeppson
Gary Maag
Dick Morrell
Richard Ohran

Electronics (cont)

David Owen
Peter Underlin

Environmental Technology

Gordon Beals
Travis Black
Brent Bradford
Kenneth Bullock
Willard DeVault
David Gunn
Chris Horting
Charles Jeffs
Garland Mayne
Jay Pitkin
Judy Sims
Gayle Smith
Neil Taylor

ADVISORY COMMITTEES

1992 - 1993

(continued)

Fashion Merchandising

Diane Downs
Jana Linnell
Ron Sumner
Julie Wiscombe

Finance & Banking

Andy Anderson
Bret VanAusdal
Scott Cartwright
Randy Hall
Richard Hillam
Paul Jacobson
Robert Kallas
Nanette Lassen
Rod Lisonbee
Dennis Wanlass
Blaine Willes
Les Wolfe

Fire Science

Ralph Anderson
Dave Bentley
Lynn Borg
William Feeney
Lorayne Frank
Andrew Glad
Brent Haliday
D. Pete Hansen
Larry Hinman

Graphics/Commercial Art

Jeff Bell
Steve Bushman
Bob DeWitt
Rodayne Esmay
Joanne Froelich
Stephen A. Hales
Dave Harmon

Graphics (cont)

Steve Keele
Jeff Kroneberger
Joe Raynes
Chuck Revill
Karren Turner
Lisa Warner
Bevin Wulfenstein

Hospitality Management

Owen Black
John Bramwell
Sam Brooks
John Warner

Human Services

Jay Bawden
Jan Cook
Lloyd Evans

ADVISORY COMMITTEES

1992 - 1993

(continued)

Human Services (cont)

Brian Miller

Daile Pikus

Dick Urban

International Business

Greg Crandall

Edmond Dosch

Barbara Everett

Lloyd Hansen

Malan Jackson

Randy Lindstrom

David Pearson

Kent Pinney

Lee Radebaugh

Stan Reese

Barry Thompson

Legal Assistant

Renee Allan

Legal Assistant (cont)

Donna Barrett

David Bradford

Max Bullett

Carol Elggren

Gary Hill

Beth Kearsley

Barbara Ochoa

Bill Orton

Marilu Peterson

Peter Reynolds

Hugh Rode

Honorable David Sam

Layne Sisk

Marie Smith

Lineman Technology

Dean Cordner

Doug Gadd

Karl Jones

Lineman (cont)

Rick Marchal

Lyle Powell

Brent Thomas

Machine Tool Technology

Duane Carrier

Max Healy

Howard Knight

Rod Merrill

Danny Olsen

Andy Thatcher

Nursing

Linda Barlow

Betty Bigler

John Bramall

Donna Cartwright

Lee Duke

Jo Nielson

ADVISORY COMMITTEES

1992 - 1993

(continued)

Nursing (cont)

Lane Pedersen
Sandy Rogers

Office Tech (cont)

Becky Peterson
Robert Rose

Pro Driving (cont)

Lynn Thompson
Pam Woodward

Office Tech &
Administration

Lorena Aiken
Rex Barrington
Noma Bowman
Lisa Ciriako
Lana Anderson Clements
Doug Cole
Susan Corson
Marcia Fluharty
Jody Gonzales
Maralyn Harmstron
Nellie Jensen
Carolyn Lloyd
LuAnn Oakes
Loralee Pearson

Physical Plant Management

Lynn Brough
Marshall Leach
Phil Lott
Don Underwood
Mark Woods

Professional Driving

Dick Allen
Ricky Bryan
Randy Hutchings
Ted Lockhart
LeRoy Ownbey
Ward Perry
Reed Reeve

Welding Technology

Nile Christofferson
Wallace Hamblin
Kevin Kessler
Max Knight
Ron Noyes
Clark Olsen
Robert Patch
Robert Max Walker

CLUBS AND ORGANIZATIONS

ALPHA KAPPA EPSILON (CLUB MED) The purpose of the CLUB MED is to promote academic excellence in pre-medical students and those interested in any other medical branch. Advisor: Gordon Garrett

CCDC Community College Deaf Club offers social and cultural support. Promotes deaf awareness and a positive interaction between the school and the student. Anyone interested in learning sign language and especially those who are deaf or have skills using signing would benefit the most from membership in this club. Advisor: Toni Deveraux

CAMPUS VENTURE Introduces students to Jesus Christ and helps them grow in their relationship with Him. To develop a Christ-centered world view based upon an evangelical interpretation of the Bible and to provide an inter-denominational atmosphere. Advisor: David Porter

CAS-CASP The organization is to provide International and American students of UVCC the opportunity to learn more about different countries of the world and their unique cultures especially those from Central America and the Caribbean. Advisor: Gustavo Estrada

CLUBS AND ORGANIZATIONS

(continued)

CHEERLEADERS A branch of the Athletic Department with the specific purpose to promote and increase school spirit and unity. All students are invited to participate in school sponsored games and activities. Advisor: Kristen Anderson

CHESS This club provides an outlet for those who enjoy this strategic game. It provides a chance to sharpen skills and compete with other chess players. Advisor: D.J. Smith

COGITO ERGO PINGO "I think, therefore I paint". The purpose is to enhance opportunities in visual arts by expanding individual and social development with professionals and peers in the visual arts field. Open to anyone interested in aesthetics. Advisor: Verl Morgan

COMPUTER CLUB This club provides the opportunity for students to update their computer skills. Advisor: David Tobler

DEX Delta Epsilon Chi, a division of DECA, is a program centered around professional activities such as marketing, management, merchandising and hospitality. The purpose is to provide real life experiences found in real life situations. Advisor: Karen Green

DRAFTING CLUB This club promotes activities and social contact with other schools and professionals in the field. They provide tours to public companies and guest speakers for the purpose of professional and social development of the member. Advisor: Bart Lynn

CLUBS AND ORGANIZATIONS

(continued)

- ECUMENICAL COLLEGE FELLOWSHIP** This club offers students Christian, spiritual and social assistance in the form of programs, discussions, and other activities. Advisor: Ann Miller
- ENVIRONMENTAL CLUB** What more can be said about this club except it is here to make students more aware of our depleting environment. Advisor: Jim Harris
- FRENCH CLUB** To teach and acquaint students with the French Speaking world and their culture and customs. Advisor: Abdou Touati
- GAIA** To develop a bio-aesthetical approach, that is any and all processes dedicated to the harmonic expressions of mans' relationship to the environment, through fostering of "geomancy" or the discussion of self, environmental and inter-species, through artistic expression, and development of awareness. Advisor: Jim Harris
- GERMAN CLUB** Experience cultural activities related to the German language. This is a great club to join if you speak a little German or none at all, but enjoy participation in German cultural events. Advisor: Rudy Lehnhardt

CLUBS AND ORGANIZATIONS

HEWLETT PACKARD To bring HP handled calculator users together for mutual benefit with the exchange of information, ideas, and improved usage skills. Advisor: Harvey Mecham

INTERCOLLEGIATE KNIGHTS (Nationally founded 1919) Silver Plume Chapter is a branch of the National Student Service Organization building integrity and leadership skills through serving our Alma Mater and the community at large, while fostering college spirit. Advisor: Malan Jackson

INTERNATIONAL STUDENT CLUB The purpose is to foster fraternity and cultural integrity among the international students through social and cultural activities at UVCC. Advisor: Gustavo Estrada

JIPANG Offering mutual improvement and cultural gathering for Japanese, Japanese speakers, and those who are interested in Japan and Japanese culture. Advisor: Malan Jackson

KARATE CLUB The main purpose of this club is to help club members learn the mental, physical and spiritual aspects of Kenpo Karate. This club is for those who would like to develop their skills in karate. Advisor: Doug Anderson

LAMBDA DELTA SIGMA A sorority sponsored by the LDS Church to strengthen women, allowing them to have influence in student affairs, render campus and community services, enjoy wholesome social activities and build lasting bonds of sisterhood. Advisor: Marilyn Smith

CLUBS AND ORGANIZATIONS

(continued)

LAUSA (Latin American LAUSA) To provide support to the Hispanic minority and other minorities in providing opportunities for them at UVCC and the community. All students are welcome. Advisor: Chuck Foster

LAW SOCIETY Members learn about the law through activities, seminars and working with those already established in the field of law. Improve your chances for success in the real world through knowledge of laws and leadership skills. Advisor: Terri Bingham

LDSSA The goal of the Latter Day Saint Student Association is to bring students unto Christ. This is accomplished by student participation with religious education and student activities which include community service, dances, show choir and many other events. Advisor: Dave Litchford/Scott Anderson

MATH This club is for those who enjoy the outcome of a negative derivative. Advisor: Joseph Huwang

MIDImuse This club is for those who need a musical diversion in life. It provides a chance to sharpen skills on the synthesizer as well as writing music. Advisor: Marden Pond

NATIVE AMERICAN STUDENT CLUB This club is for Native American Students and to expose UVCC Student body to Native American culture. Advisor: Chuck Foster

CLUBS AND ORGANIZATIONS
(continued)

OUTDOOR RECREATION AND RENTALS Any college organized activity attempting to implement rock climbing, rappelling, rafting, or any other outdoor activity in their program is required to go through the Outdoor Recreational Department under the direction of Clay Chivers, located in the Student Center. Such activities require special training and equipment. Because of the high liability of these activities, safety is of the utmost importance. Advisor: Clay Chivers

PHI BETA LAMBDA The purpose is to bring business and education together in a positive working relationship by promoting competition, developing character, teaching leadership and learning to have self-confidence. PBL is the collegiate level of FBLA. Membership is open to all students of this college. Advisor: Colleen Vawdrey

PHI THETA KAPPA The purpose of the club is to promote scholarship, development of leadership and service, and cultivate fellowship among qualified students of this college. Advisor: Mike Falgoust

POLYNESIAN CLUB This is a great club to join if you want to learn about the Polynesian culture or if you have lived it. Advisor: Peter Uluave

PROGRESSIVE CLUB This club is here to initiate education and activities relating to progressive issues and community service. Advisor: Joseph Grcic

CLUBS AND ORGANIZATIONS

RACQUETBALL This club is provided to sharpen skills of the beginner as well as the intermediate racquetball player. They also compete around Utah. Advisor: Vince Miner

RAINBOW CLUB (ABLE) Advance Awareness, Believe in ourselves, Lend service to community and others, Encourage integration for students and others with disabilities. Membership is not limited to those with disabilities. Advisor: Curtis Pendleton

RODEO CLUB The club competes in college rodeos throughout Utah and Idaho. Enjoy competing together as a team and participating in many other activities outside of rodeo competition. This club is open to anyone who is interested in rodeo whether you ride, rope or just enjoy a great time. Advisor: Russ Black

RUSSIAN CLUB Cultural activities related to the Russian language are sponsored for those who speak Russian or wish to learn. Advisor: Eberhardt Lehnardt

SIGMA GAMMA CHI A fraternity sponsored by the LDS Church to promote leadership, scholarship, spirituality, service, patriotism and brotherhood. This is a great opportunity to get involved in school affairs and meet people. Advisor: Phil Kresge

SKI CLUB The ski team gives students the opportunity to ski competitively against other college students. The team placed third in both men's and women's divisions in 1986 and 1987. Weber State, University of Utah, Utah State and Montana State are current competitors. Advisor: Bart Jacobs

CLUBS AND ORGANIZATIONS

(continued)

SOCCKER This gives students the opportunity to build team participation as well as compete against other college students. Advisor: Carl Johnson

STUDENT LITERARY PUBLICATIONS CLUB To provide UVCC students with an opportunity to create and publish personal works of art, graphics, poetry, photography, short stories and narratives in a yearly student magazine. Advisor: Grant Flygare

SYNERGY Synergy allows students interested in dance to develop their skills and also give UVCC student body more depth in the Fine Arts. Advisor: Connie Reynolds

THE COLLEGE TIMES The College Times is UVCC's official college newspaper. Students participating on the Times staff develop writing, editing, designing, selling, and business skills. All UVCC students are welcome to gain experience with the Times. Keep pace with UVCC; Keep pace with the Times. Advisor: Grant Flygare

VICA Vocational Industrial Clubs of America is for all trade, industrial, technical and health occupation students. An emphasis is placed on dignity of work, education, fair play and high moral and spiritual standards. Prepare "...for leadership in the world-of-work" through State and National competitions. Advisor: Ken Ewell

USU/UVCC IMA (Institute of Management Account) To introduce management accounting students planning careers in business. Advisor: Dennis Greer

CLUBS AND ORGANIZATIONS

(continued)

UTAH VALLEY COLLEGIATE AERO CLUB The purpose is to promote interest in the science of aviation, and increase public awareness of an appreciation for the impact of aviation in our world. Advisor: Ron Smart

UTAH VALLEY CYCLISTS The club goal is to raise public awareness of cycling and its benefits. The club wants to improve safety in cycling practices in Utah Valley. Advisor: Bart Jacobs

UVCC BALLROOM DANCE COMPANY It has been said the "Dance is life put to music." Our purpose is to promote ballroom dancing through the education of others, and the building up of the UVCC Ballroom Dance Company. Advisor: Scot Asbell

WOMEN'S CONNECTION Personal and Career Development Club for non-traditional students will provide socialization, networking, and help build self esteem. It is especially designed to help students in becoming emotionally and economically self-sufficient and provide a safe environment for growth and learning. Advisor: Betty McMasters

Source: Utah Valley Community College, Student Handbook

CONTENTS

FINANCE

History of Education and General Operating Budgets and Appropriations 1979-1992	84
History of State Appropriation Per FTE, 1979-1992	85
Education and General Operating Funds Use Expenditure Category, 1992-1993 (pie chart) . . .	86
Education and General Operating Funds Expenditure Purpose, 1992-1993 (pie chart)	87
Education and General Revenue Sources, 1992-1993 (pie chart)	88
History of Education and General Operating Budget and Appropriation 1982-1992 (bar graph) .	89
Fuel and Power Expenditures, 1985-1992 (bar graph)	90
Scholarship Activity Report 1991-1992	91
Financial Aid Activity Report 1991-1992	94
Federal, State, and Private Gift Status Report 1991-1992	95
Private Funding	96

HISTORY OF EDUCATION AND GENERAL OPERATING BUDGET AND STATE APPROPRIATION

<u>Year</u>	<u>Total Budget</u>	State <u>General Fund</u>	<u>Percentage</u>
1979-80	\$7,462,800	\$5,346,500	71.64%
1980-81	\$8,656,400	\$6,206,500	71.70%
1981-82	\$10,281,200	\$7,054,100	68.61%
1982-83	\$11,377,500	\$7,671,400	67.43%
1983-84	\$12,021,700	\$7,997,700	66.53%
1984-85	\$13,854,100	\$9,963,500	71.92%
1985-86	\$15,400,281	\$10,723,475	69.63%
1986-87	\$15,967,752	\$10,716,500	67.11%
1987-88	\$16,796,426	\$11,162,400	66.46%
1988-89	\$17,268,400	\$11,449,800	66.30%
1989-90	\$18,856,800	\$12,370,900	65.60%
1990-91	\$21,319,500	\$13,939,400	65.38%
1991-92	\$23,538,800	\$14,994,600	63.70%
1992-93	\$26,416,500	\$16,121,200	61.03%

Source: Utah Valley Community College, Budget Office
Excludes supplementals and one-time reductions

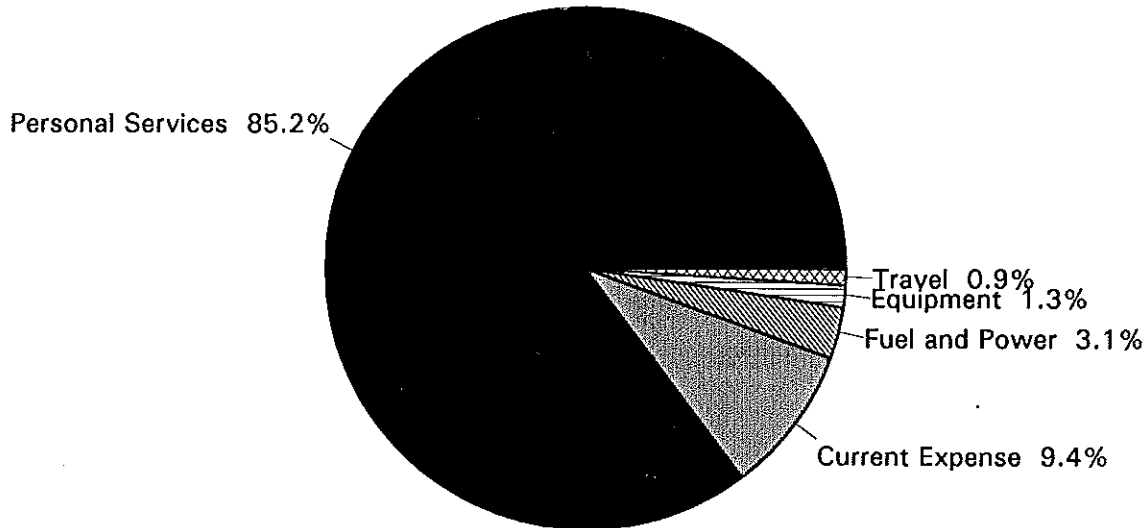
HISTORY OF STATE APPROPRIATION PER FTE*

<u>Year</u>	<u>State Appropriation</u>	<u>Annualized FTE</u>	<u>Appropriation Per FTE</u>
1979-80	\$5,346,500	3,250	\$1,645
1980-81	\$6,206,500	3,840	\$1,616
1981-82	\$7,054,100	4,349	\$1,622
1982-83	\$7,671,400	5,035	\$1,524
1983-84	\$7,997,700	5,272	\$1,517
1984-85	\$9,963,500	4,947	\$2,014
1985-86	\$10,723,475	4,899	\$2,189
1986-87	\$10,716,500	5,206	\$2,058
1987-88	\$11,162,400	5,302	\$2,105
1988-89	\$11,449,800	5,329	\$2,149
1989-90	\$12,370,900	5,854	\$2,113
1990-91	\$13,939,400	5,787	\$2,409
1991-92	\$14,994,600	6,732	\$2,227

*FTE = Full-time equivalent

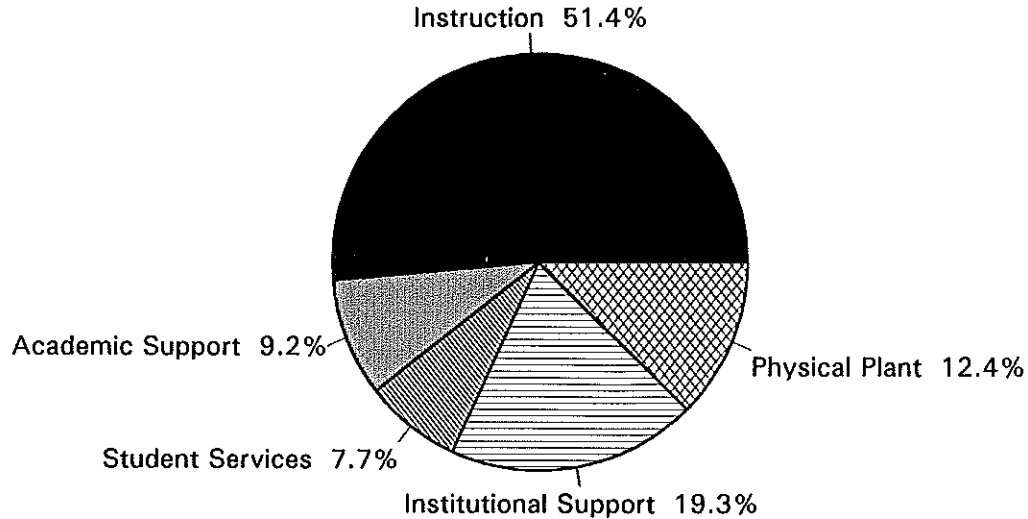
Source: Utah Valley Community College, Budget Office

EDUCATION & GENERAL OPERATING FUNDS USE EXPENDITURE CATEGORY 1992 - 1993



Source: Utah Valley Community College, Budget Office

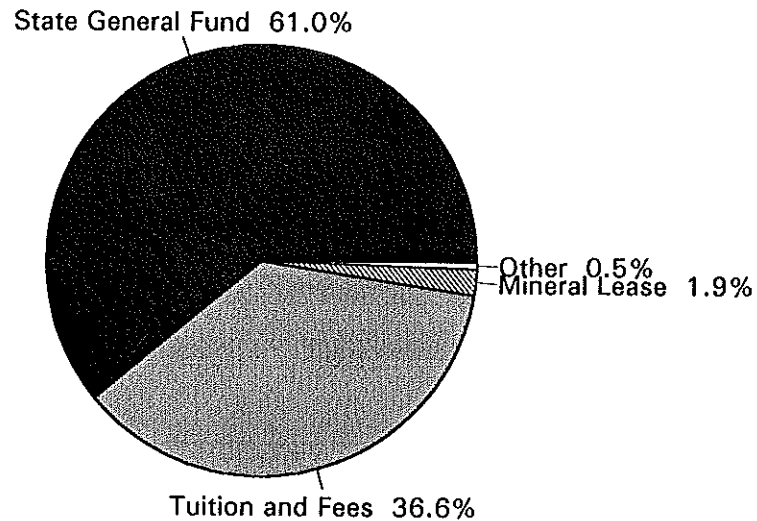
EDUCATION & GENERAL OPERATING FUNDS EXPENDITURE PURPOSE 1992 - 1993



Source: Utah Valley Community College, Budget Office

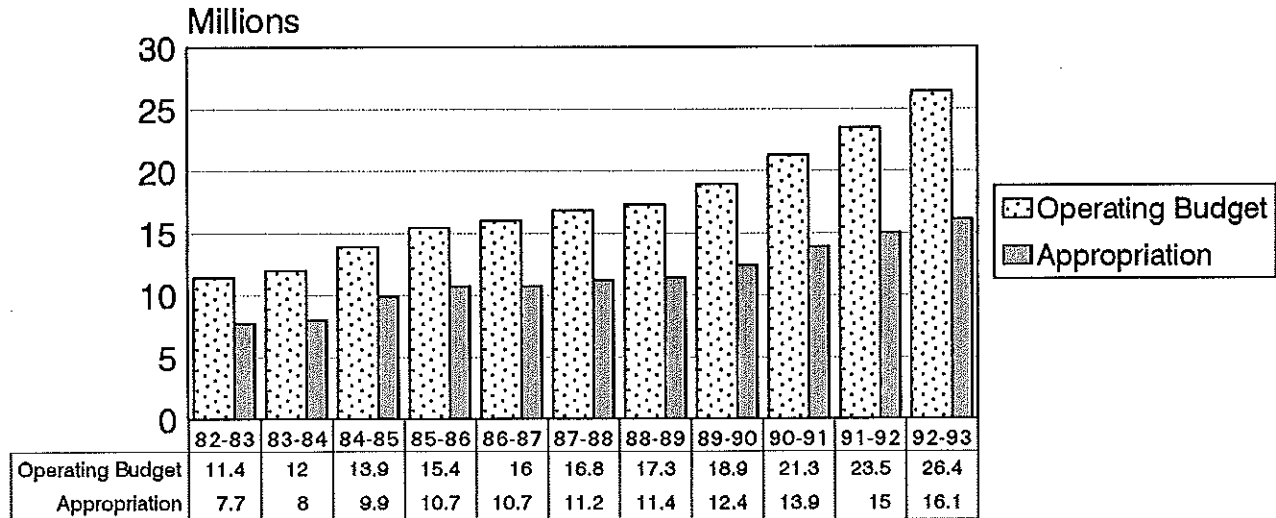
EDUCATION AND GENERAL REVENUE SOURCES

1992 - 1993



Source: Utah Valley Community College, Budget Office

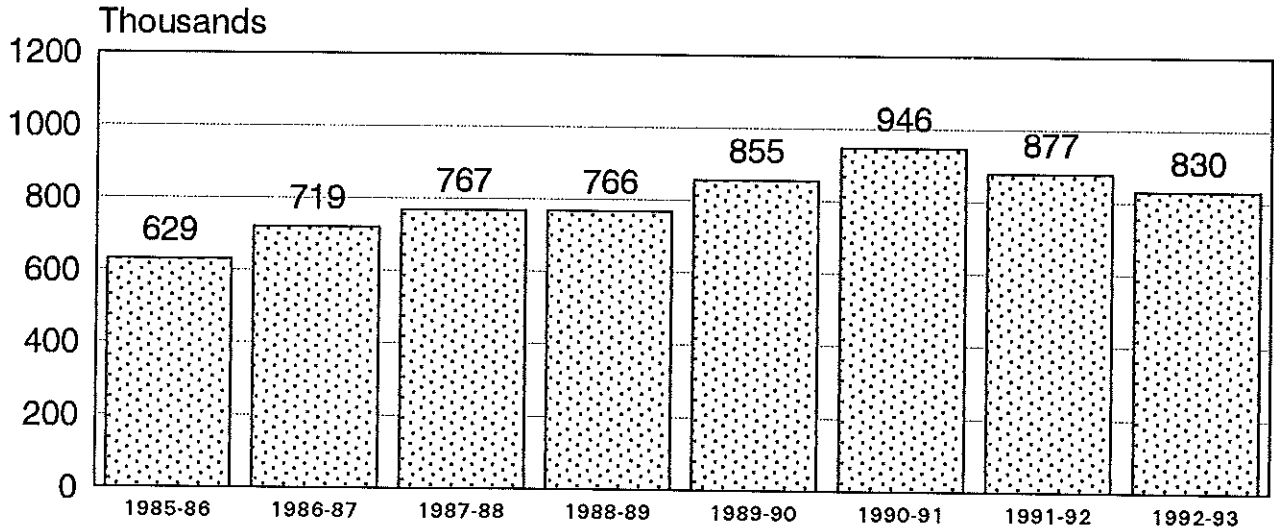
HISTORY OF EDUCATION AND GENERAL OPERATING BUDGET AND STATE APPROPRIATION



Source: Utah Valley Community College, Budget Office

FUEL AND POWER EXPENDITURES

(Includes energy projects approved by the Board of Regents)



Source: Utah Valley Community College, Budget Office

Budgeted
90

SCHOLARSHIP ACTIVITY REPORT 1991-1992

<u>Name</u>	<u>Number</u>	<u>Amount</u>
Athletic Non-Resident Waiver	14	18,492.00
Athletic Scholarship	40	20,579.82
Athletic Tuition Waiver	68	64,078.34
B/L Clyde Scholarship	2	1,852.00
Cass Scholarship	22	183,139.50
Collision Repair Scholarship	1	531.00
Crouch Auto Mechanic Scholarship	3	10,706.25
Cummins Intermountain Scholarship	3	1,500.00
Dean's Discretionary School of Business	27	7,764.50
Dean's Discretionary School of General Studies	65	45,545.38
Dean's Discretionary School of Trades/Technology	43	12,089.50
Don Black Scholarship	1	1,116.50
Don James Scholarship	4	2,246.00
Don/Renee Butler Scholarship	1	380.00
Dwane Frandsen Scholarship Fund	1	800.00
First Security Foundation Scholarship	2	1,500.00
First-Time Needs Tuition Waiver	24	23,918.00
First-Time Student Tuition Waiver	84	126,001.50

SCHOLARSHIP ACTIVITY REPORT
(continued)

<u>Name</u>	<u>Number</u>	<u>Amount</u>
Florence B. Regan Scholarship	2	2,000.00
General Scholarship	21	33,966.50
Geneva Steel Emp-Scholarship	3	4,000.00
Governor's Vocational Tuition Waiver	20	28,329.00
Greer Nursing Scholarship	22	7,260.00
Gunther Family Scholarship	30	17,864.00
Home Builders Scholarship	7	6,072.00
Irma Burge (PEO) Scholarship	2	1,858.50
Joanne B. Losee Scholarship	5	2,533.00
Mac Minority Scholarship	10	13,826.00
Math & Science Scholarship	2	520.00
Minority Student Scholarship	5	2,738.00
Miscellaneous Scholarship	24	2,701.50
Morton Thiokol Scholarship	1	1,500.00
Mountain Fuel Scholarship	4	4,495.00
Non-Traditional Student Scholarship	7	9,462.00
Pacific Corp Scholarship	2	2,500.00
Pearson Trust Scholarship	23	15,161.50
Performing Arts Tuition Waiver	66	56,862.25

SCHOLARSHIP ACTIVITY REPORT

(continued)

PGA Scholarship	2	1,000.00
Pleasant Grove Health Scholarship	1	994.00
Rodeo Scholarship	9	5,071.50
Second-Year Student Tuition Waiver	64	77,532.00
Special Attainment Tuition Waiver	12	17,892.00
Stouffer Foods Scholarship	9	4,848.00
Student Activities Non-Resident Tuition	6	3,330.00
Student Activities Tuition Waiver	64	47,687.25
Student or Program in Need Scholarship	5	15,475.63
Turning Point Scholarship	1	661.50
Utah Career Teaching Scholarship	3	6,829.50
Utah Power & Light Scholarship	2	2,150.00
Welding Scholarship	1	460.00
William D. Ford Scholarship	1	1,119.50

Source: Utah Valley Community College, Financial Aid Office

FINANCIAL AID ACTIVITY REPORT 1991 - 1992

	<u>NUMBER OF STUDENTS</u>	<u>AMOUNT</u>
<u>GRANTS</u>		
Pell	3,423	\$4,756,730
SEOG	457	255,441
SSIG	193	88,461
<u>LOANS</u>		
Alaskan Loans	5	22,725
Canadian Loans	6	14,583
Perkins	104	173,790
Stafford	1,367	2,900,023
Supplemental Loans	89	228,201
Short-Term	2,937	1,642,175
Miscellaneous	45	219,183
<u>EMPLOYMENT</u>		
College Work-Study	106	140,628
 TOTAL	 8,732	 \$10,441,940

Source: Utah Valley Community College, Office of Financial Aids

FEDERAL, STATE, AND PRIVATE GIFT STATUS REPORT 1991-1992

Formula	\$384,750
CBO	20,000
Underserved	48,000
JTPA	40,974
Displaced Homemakers	57,233
Flow Through	592,892
Sex Equity	53,213
Single Parent	75,000
TOTAL	\$1,209,262
Title III, U.S. Dept of Educ (5 yr)	\$2,159,000
Talent Search, U.S. Dept of Educ (3 yr)	572,736
S.C.U.P., U.S. Dept of Educ	825,000
Commercial Driving, U.S. Dept of Educ	217,820
DCED-High Tech	122,127
Upward Bound, U.S. Dept of Educ (3 yr)	761,697
Drug Prevention, U.S. Dept of Educ	115,000
Ethics/Curriculum, U.S. Dept of Educ	185,575
Title III, U.S. Dept of Educ	1,000,000
TOTAL	\$5,958,957

Source: Utah Valley Community College, Development Office

PRIVATE FUNDING

(Includes Foundations, Corporations, Businesses, and Individuals)

	<u>1989-90</u>	<u>1990-91</u>	<u>1991-92</u>
UNRESTRICTED:			
Undesignated	\$2,377	\$2,317	\$2,745
*RESTRICTED:			
Administrative enhancement	2,325	2,176	3,348
Awards	3,000	0	0
Endowment administrative costs	9,538	14,838	13,421
Institution departments	2,519	34,388	180,391
Institutional excellence	0	100	0
Nursing	3,502	0	0
Scholarships	24,952	24,284	101,605
ENDOWMENT:			
Administrative enhancement	18,000	0	0
Awards	2,385	1,912	1,824
Institutional excellence	65,100	17,053	6,050
PACE	5,000	0	0
Scholarships	100,273	62,350	264,751
GIFTS IN KIND:	41,084	86,306	183,675
TOTAL PRIVATE FUNDING	<u>\$280,055</u>	<u>\$245,724</u>	<u>\$757,810</u>

*Restricted funding is recognized when it is used for its intended purpose.

Source: Utah Valley Community College, Development Office

CONTENTS

FACILITIES

Physical Facilities, Building, Square Feet	97
Physical Facilities, Buildings in Progress	98
Physical Facilities, Priority Requests 1992	99
Physical Facilities, Type of Space	100
Physical Facilities, Square Feet (bar graph)	101
Age of Physical Facilities, Placed in Service, Square Footage	102

PHYSICAL FACILITIES

<u>Building</u>	<u>Gross Square Feet</u>
Activity Center	39,500
Administration Building	81,645
Automotive & Auxiliary Buildings	97,106
Business Building	71,520
Central Plant & Auxiliary Buildings	13,740
Environmental Technology Lab	6,715
Gunther Trades	140,056
Learning Resource Center	91,577
Pioneer House	1,511
Planning Center & Auxiliary Buildings	13,200
Provo Campus	162,663
Science Building	82,482
Student Center	57,621
President's Residence	3,442
Total Square Feet*	862,778

*SQUARE FOOTAGE FIGURES ARE APPROXIMATE

Source: Utah Valley Community College, Office of Facilities Planning, Office of Institutional Research and Strategic Planning

PHYSICAL FACILITIES

<u>Buildings in Progress</u>	<u>Gross Square Feet</u>
Physical Education/Special Events Center	109,050
Student Center Addition	46,000
Total Square Feet*	155,050

*SQUARE FOOTAGE FIGURES ARE APPROXIMATE

Source: Utah Valley Community College, Office of Facilities Planning, Office of Institutional Research and Strategic Planning

PHYSICAL FACILITIES

<u>Priority Requests for 1993</u>	<u>Gross Square Feet</u>
Space Utility/Capacity Enhancement	31,855
Physical Plant	52,800
Provo Campus Renovation	161,500
Electronics and Engineering Technology Building	120,600
Total Net Square Feet*	366,755

*SQUARE FOOTAGE FIGURES ARE APPROXIMATE

Source: Utah Valley Community College, Office of Facilities Planning, Office of Institutional Research and Strategic Planning

PHYSICAL FACILITIES

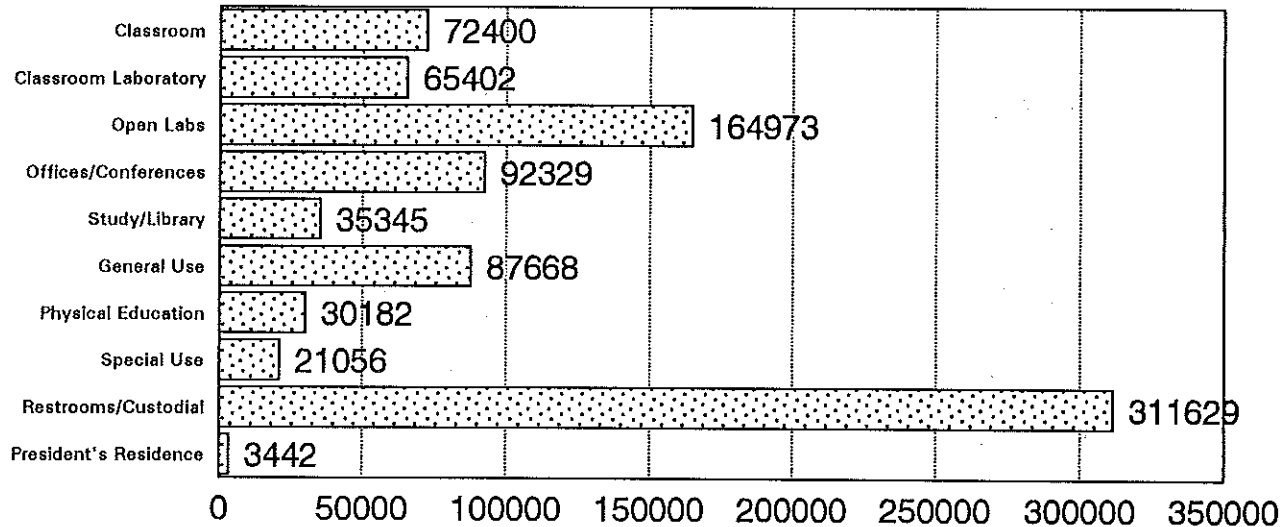
<u>Type of Space</u>	<u>Gross Square Feet</u>
Classrooms	72,400
Classroom Laboratories	65,402
Open Labs	164,973
Offices/Conference Rooms	92,329
Study/Library Facilities	35,345
General Use Facilities	87,668
Physical Education Facilities	30,182
Special Use Facilities	21,056
Restrooms/Circulation/Custodial/Mechanical Area/Structural	311,629
Residential	3,442
Total Square Feet*	884,426

*SQUARE FOOTAGE FIGURES ARE APPROXIMATE, SPACE INCLUDES "LEASED IN" AND "LEASED OUT" SQUARE FEET, OPEN LAB SPACE IS EQUIPMENT INTENSIVE - NOT VACANT SPACE

Source: Utah Valley Community College, Office of Facilities Planning, Office of Institutional Research and Strategic Planning

PHYSICAL FACILITIES

NET SQUARE FEET



Source: Utah Valley Community College, Office of Facilities Planning, Office of Institutional Research

AGE OF PHYSICAL FACILITIES

<u>Placed in Service</u>	<u>Square Footage</u>
1950-1959	89,393
1960-1969	74,800
1970-1979	404,275
1980-1989	189,454
1990	23,270
1992	<u>39,780</u>
Total Square Footage	820,972

Source: Utah Valley Community College, Office of Facilities Planning, Office of Institutional Research and Strategic Planning

CONTENTS

RESEARCH

NEW AND CONTINUING STUDENT SURVEY	103
Employment During First Term in College, Entering Student	104
Employment During First Term in College, Continuing Student	105
Preferred Classtime, Entering Student	106
Preferred Classtime, Continuing Student	107
Are You A Financial Aid Applicant?, Entering Student	108
Are You A Financial Aid Applicant?, Continuing Student	109
Enrollment Status, Entering Student	110
Enrollment Status, Continuing Student	111
How Long Have You Been Attending Our College?, Continuing Student	112
If UVCC Was Not Your First Choice, What Type College Was Your First Choice?, Entering . . .	113
Marital Status, Entering Student	114
Marital Status, Continuing Student	115
If You Are Single And Renting An Apartment, Are You:	116
Which Of The Following Best Describes Your Housing Arrangement?	117
How Many Miles From UVCC Is Your Permanent Residence?	118

CONTENTS

GRADUATE FOLLOW-UP SURVEY	119
What Was Your Primary Educational Objective When You First Enrolled?	120
Did You Achieve Your Ultimate Educational Objective At UVCC?	121
Do You Feel Your Experiences At UVCC Have Improved The Quality of Your Life?	122
If You Could Go Back, Knowing What You Know Now, Would You Still Attend UVCC?	123
How Satisfied Were You With The Content Of Courses At UVCC?	124
How Satisfied Were You With The Quality Of Instruction AT UVCC?	125
Usefulness Or Relevance Of Training To Your Current Job?	126
How Satisfied Were You With The Career Or Transfer Preparation At UVCC?	127
Are You Currently Taking Any Classes Or Training?	128
After Graduating From UVCC Did You Enroll At A Four Year University?	129
If UVCC Were To Become A Four Year School Would You Consider Returning For A BS?	130
After Graduating From UVCC, Did You Look For A Full-Time Job?	131
Which Of The Following Best Describes Your Current Employment Situation?	132
Would You Recommend Attending UVCC To Your Friends And Acquaintances?	133
 FALL 1992 NEW STUDENT SURVEY	 134
What Is Your Student Status?	135
How Far Is Your Home From UVCC?	136
How Did You Learn About UVCC?	137
What Are Your Living Arrangements?	138
Will You Need Financial Assistance?	139

CONTENTS

FALL 1992 NEW STUDENT SURVEY (continued)

How Many Semesters Do You Plan To Attend?	140
How Many Children (Including Yourself) Are In Your Parents' Family?	141
How Many Hours Do You Plan To Work Each Week While Attending School?	142
What Is Your Approximate Family Income?	143
How Likely Are You To Pursue A Four-Year Degree?	144
If You Decide To Pursue A Four-Year Degree, Where Would UVCC Rank As An Option?	145
If UVCC Was Not Your First Choice, Please Indicate Your First Choice	146
Why Did You Choose To Attend UVCC?	147

NEW AND CONTINUING STUDENT SURVEY

The following charts and graphs have been compiled from data collected from UVCC NEW and CONTINUING students during Fall Quarter 1989, Fall Semester 1990, and Fall Semester 1991.

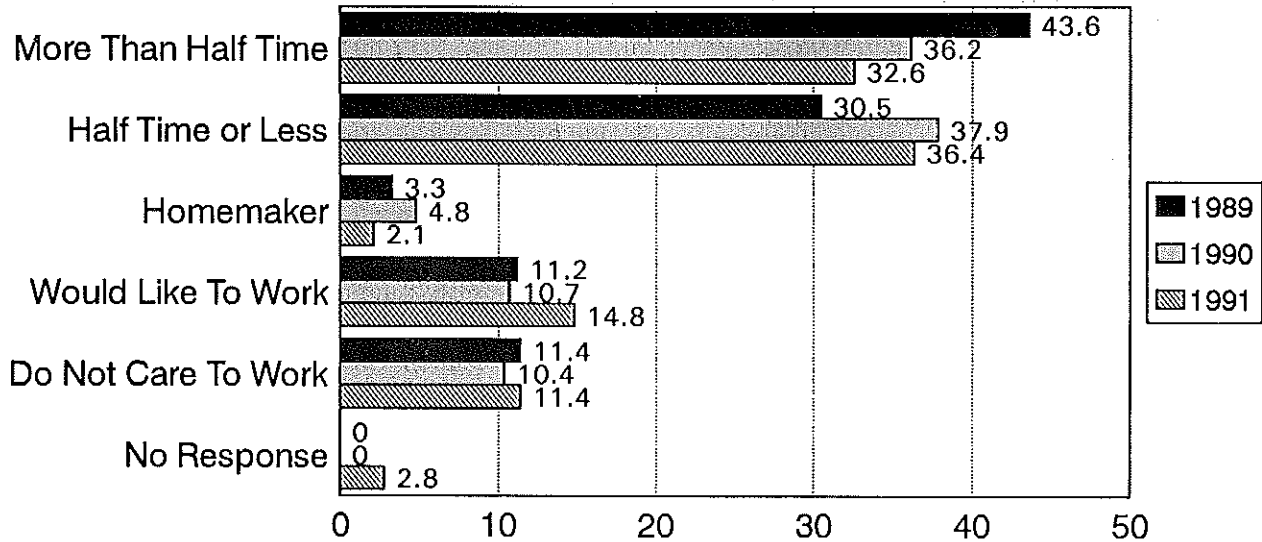
The Office of Institutional Research and Strategic Planning initiated this study in an effort to provide the college with a more detailed profile of students and their preferences.

The survey instruments utilized in the study were developed by the National Center for Higher Education Management Systems and are specific to community college students. The validity and reliability of the testing instruments has been well-substantiated by NCHEMS and other participating institutions.

A very cautious random sample of NEW and CONTINUING students was taken. Variables of major, class time and location were considered in the sampling process and more than 10 percent of the studentbody participated in the study. A more detailed statistical analysis of this research is available upon request.

EMPLOYMENT DURING FIRST TERM IN COLLEGE

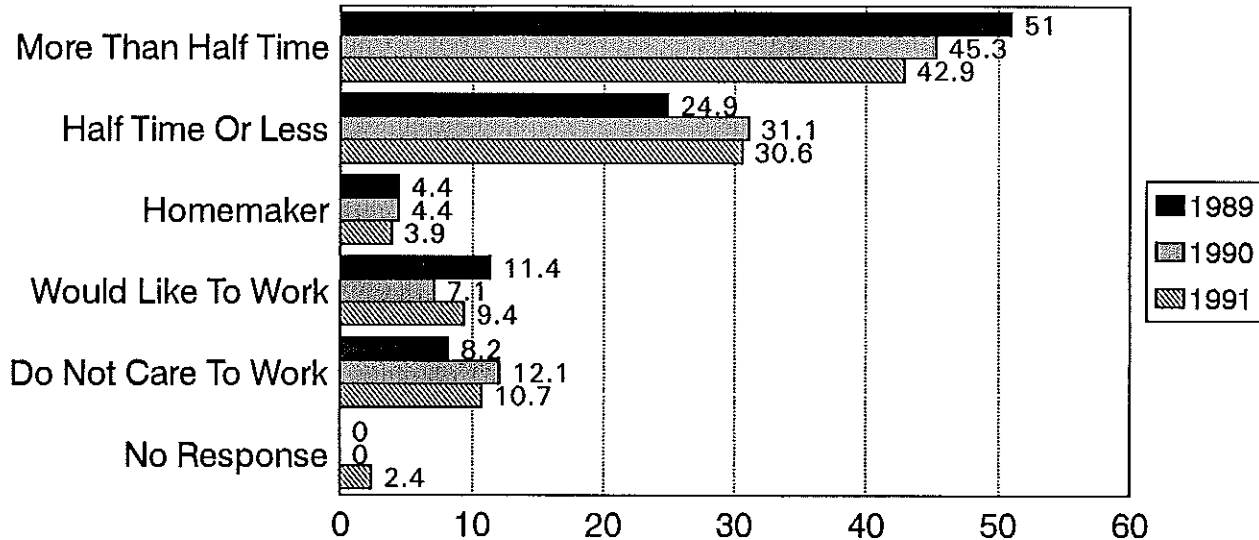
ENTERING STUDENT SURVEY 1991



Source: Utah Valley Community College, Office of Institutional Research and Strategic Planning

EMPLOYMENT DURING FIRST TERM IN COLLEGE

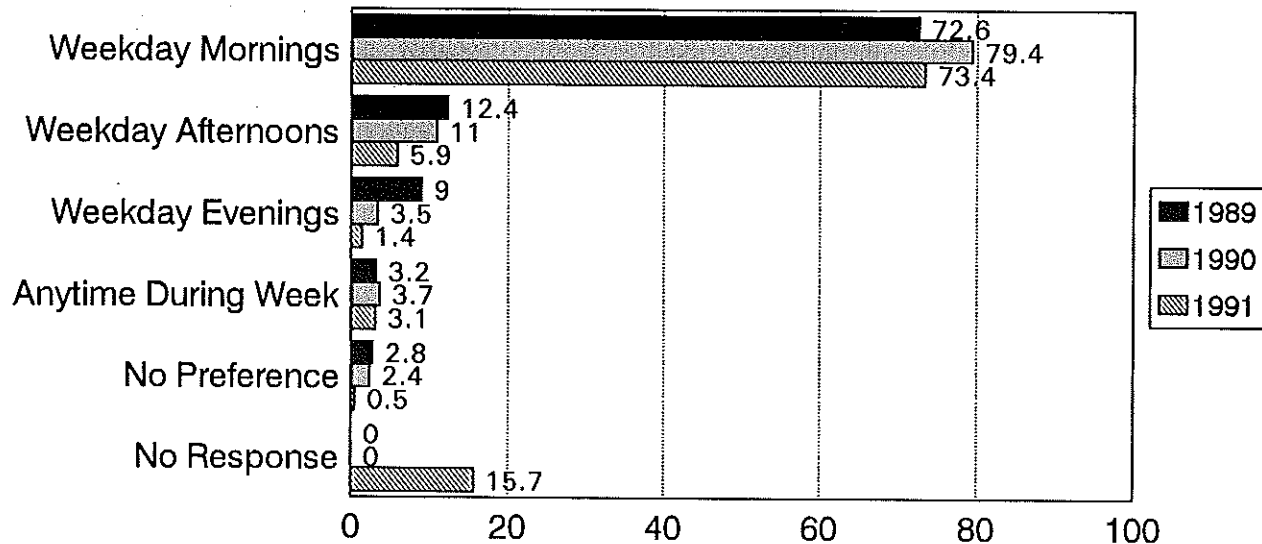
CONTINUING STUDENT SURVEY 1991



Source: Utah Valley Community College, Office of Institutional Research and Strategic Planning

PREFERRED CLASS TIME

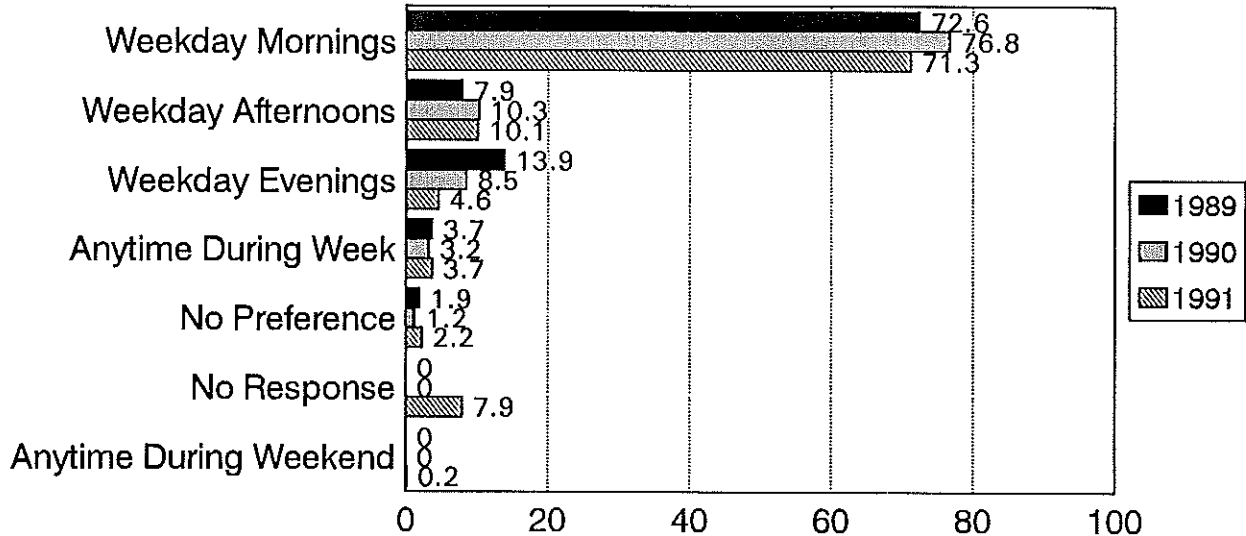
ENTERING STUDENT SURVEY 1991



Source: Utah Valley Community College, Office of Institutional Research and Strategic Planning

PREFERRED CLASS TIME

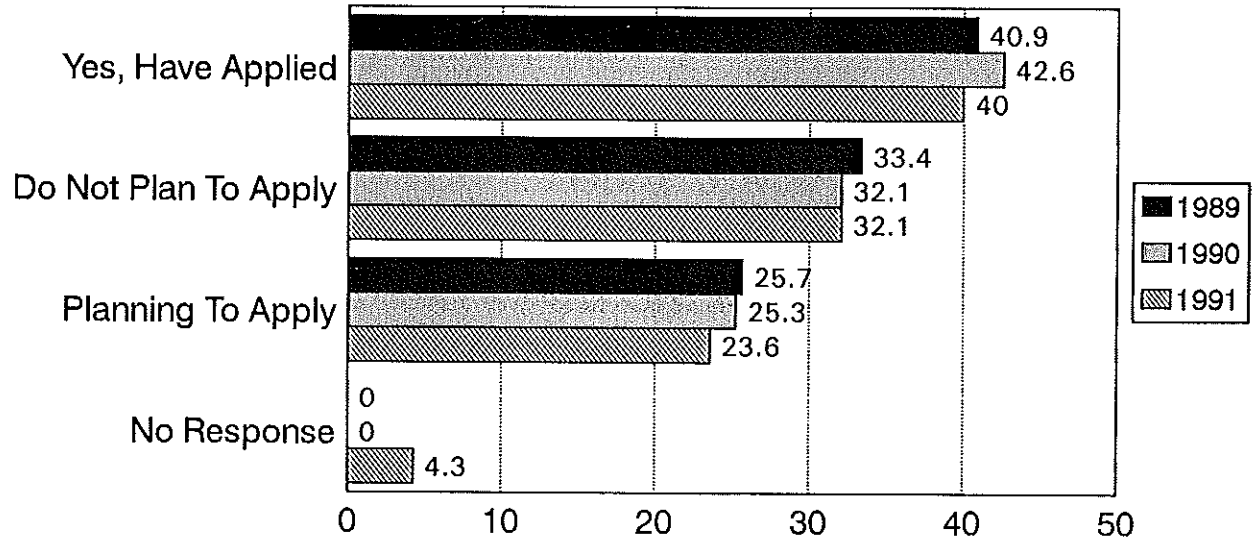
CONTINUING STUDENT SURVEY 1991



Source: Utah Valley Community College, Office of Institutional Research and Strategic Planning

ARE YOU A FINANCIAL AID APPLICANT?

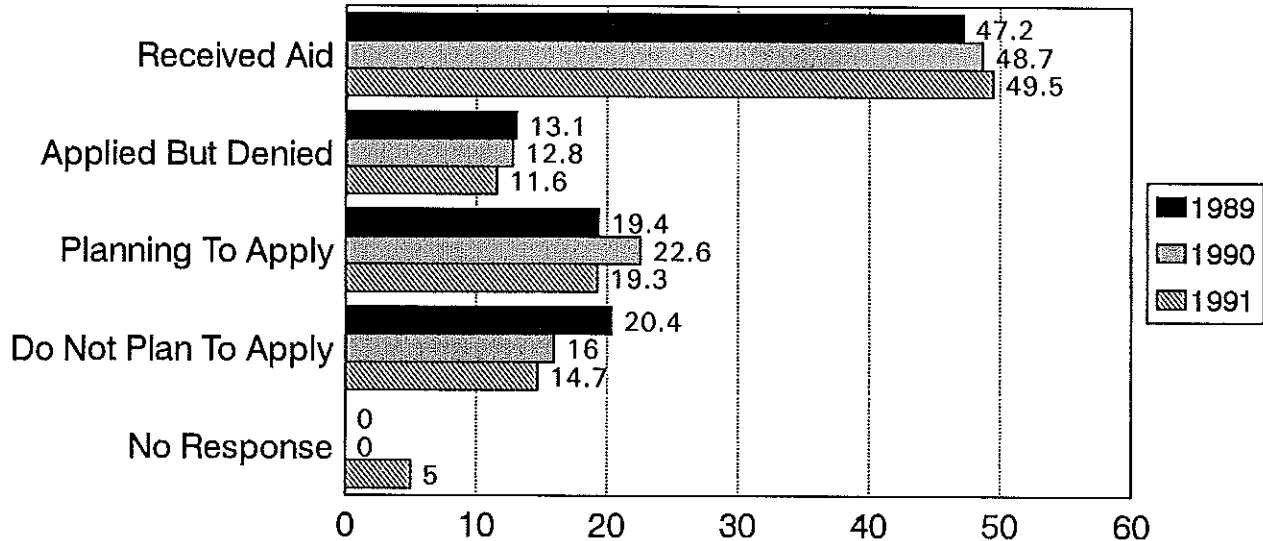
ENTERING STUDENT SURVEY 1991



Source: Utah Valley Community College, Office of Institutional Research and Strategic Planning

ARE YOU A FINANCIAL AID APPLICANT?

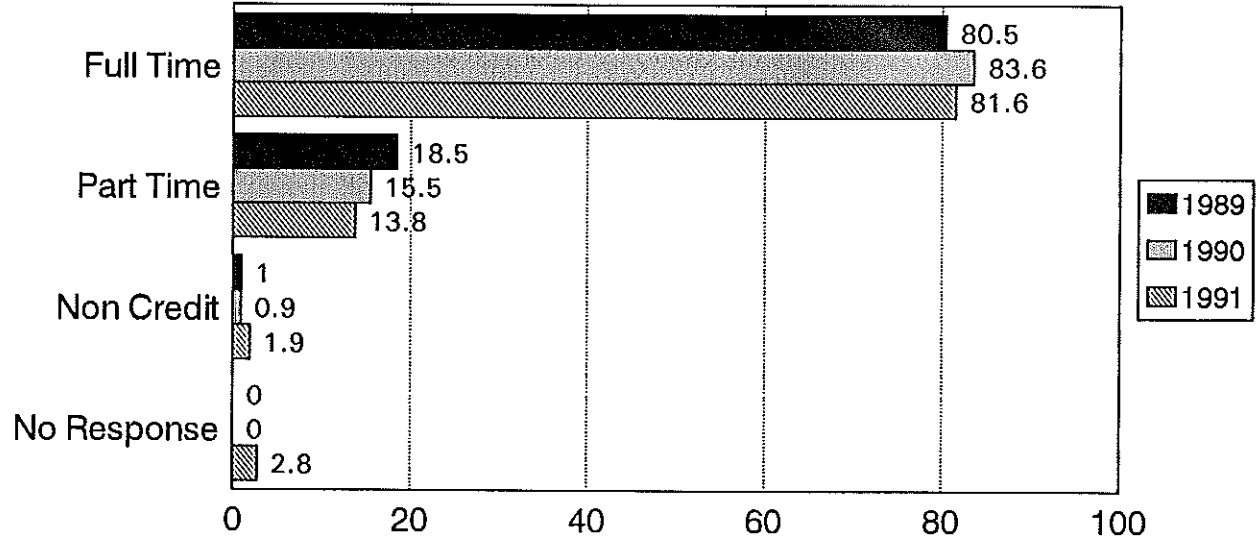
CONTINUING STUDENT SURVEY 1991



Source: Utah Valley Community College, Office of Institutional Research and Strategic Planning

ENROLLMENT STATUS

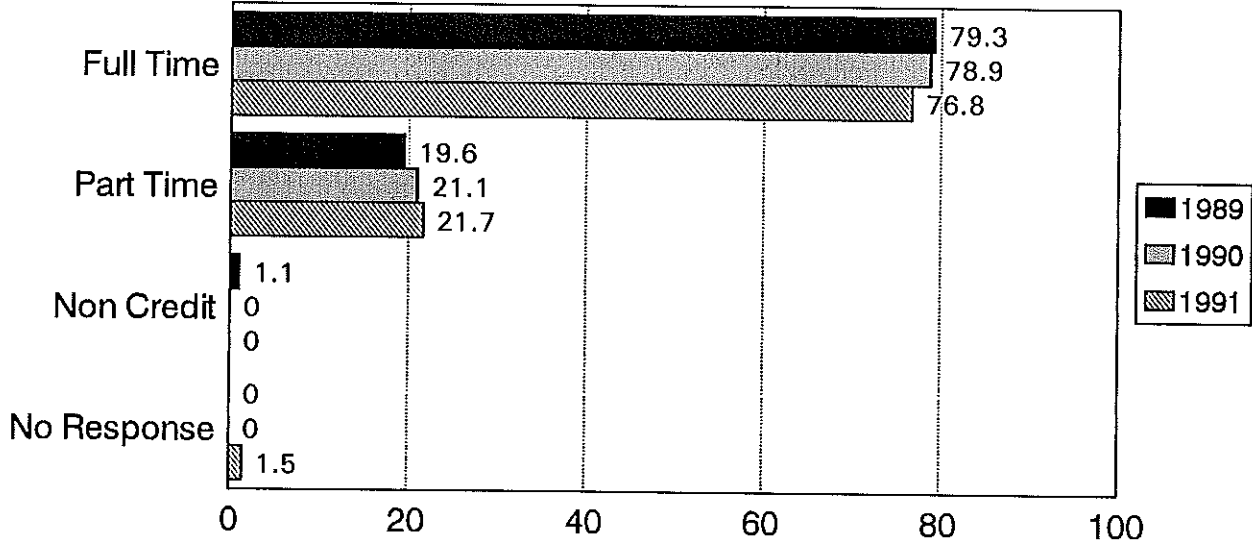
ENTERING STUDENT SURVEY 1991



Source: Utah Valley Community College, Office of Institutional Research and Strategic Planning

ENROLLMENT STATUS

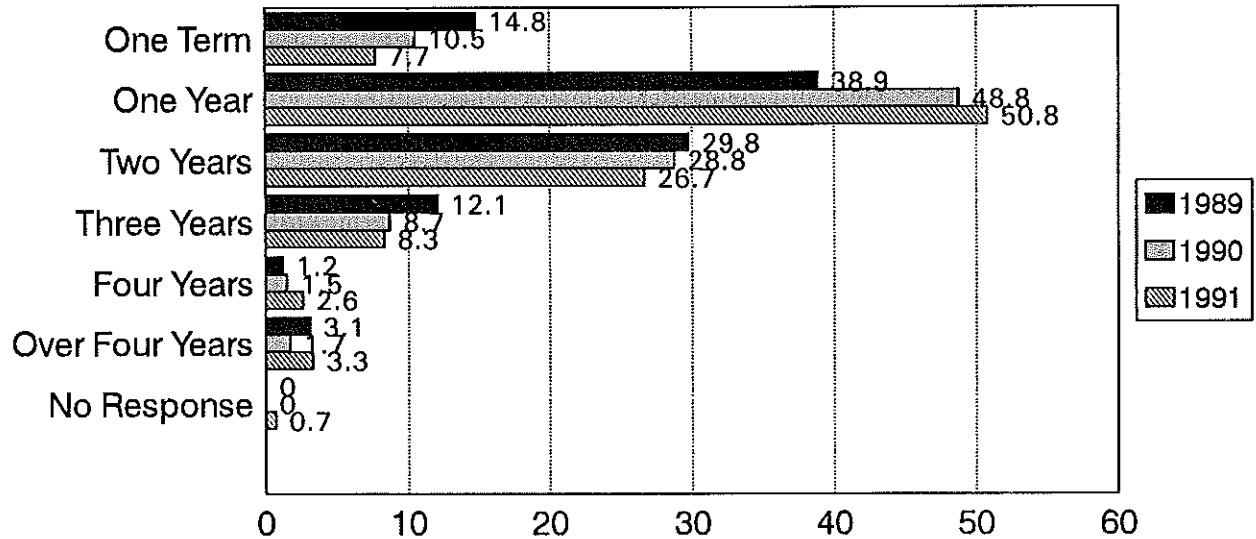
CONTINUING STUDENT SURVEY 1991



Source: Utah Valley Community College, Office of Institutional Research and Strategic Planning

HOW LONG HAVE YOU BEEN ATTENDING OUR COLLEGE?

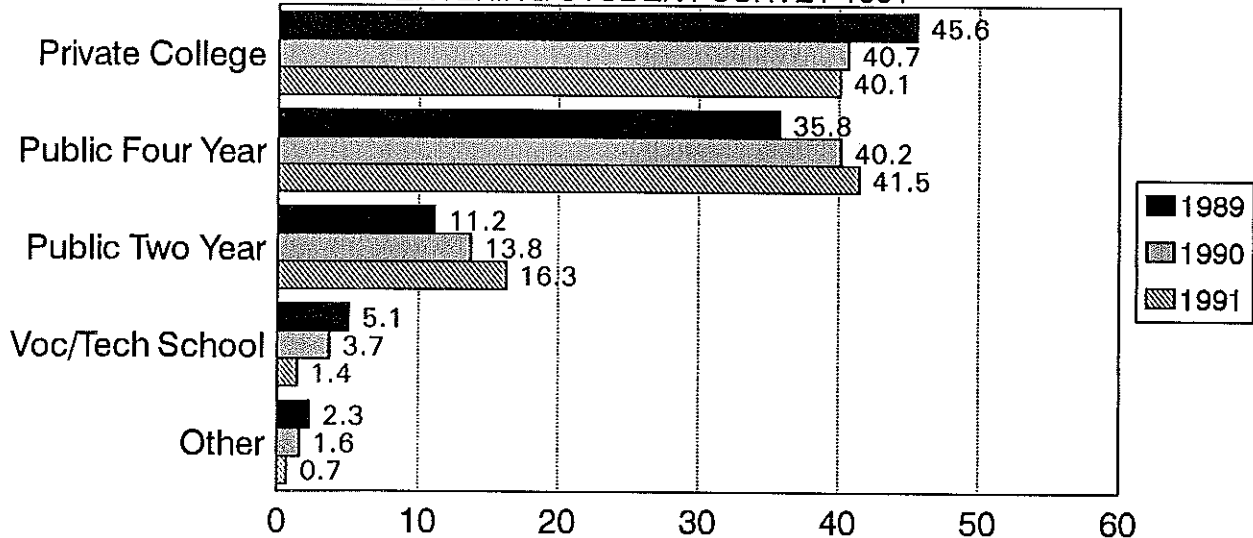
CONTINUING STUDENT SURVEY 1991



Source: Utah Valley Community College, Office of Institutional Research and Strategic Planning

IF UVCC WAS NOT YOUR FIRST CHOICE, WHAT TYPE COLLEGE WAS YOUR FIRST CHOICE?

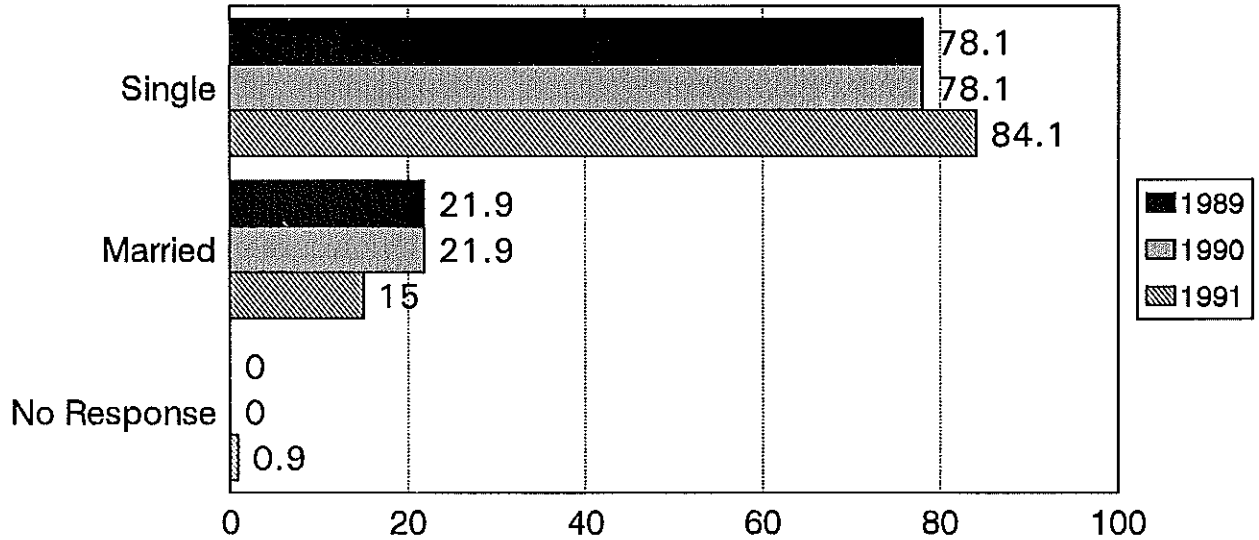
ENTERING STUDENT SURVEY 1991



Source: Utah Valley Community College, Office of Institutional Research and Strategic Planning

MARITAL STATUS

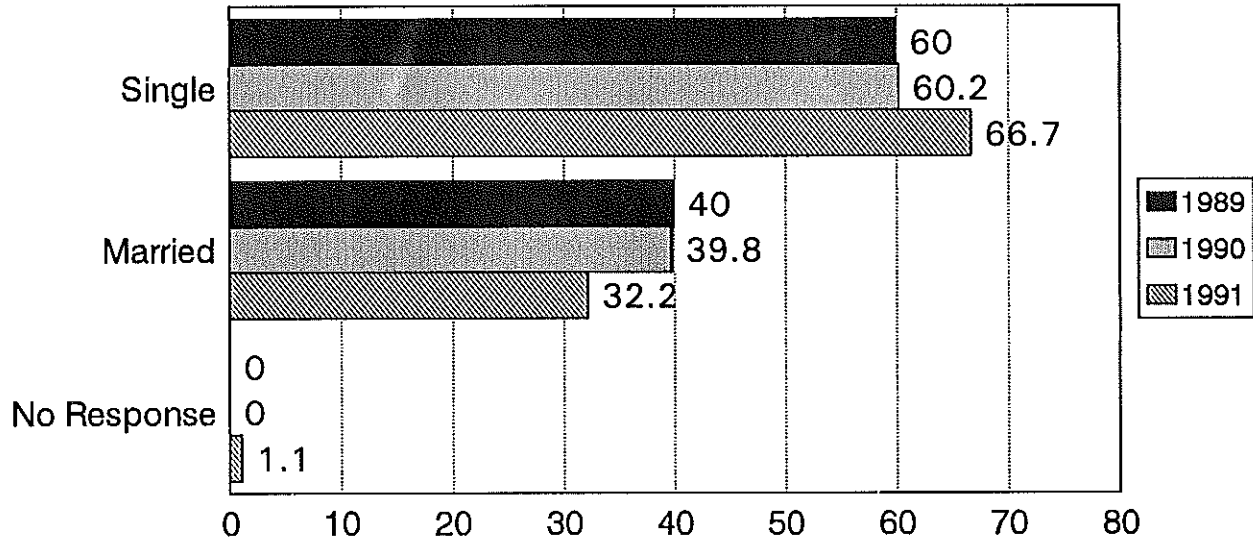
ENTERING STUDENT SURVEY 1991



Source: Utah Valley Community College, Office of Institutional Research and Strategic Planning

MARITAL STATUS

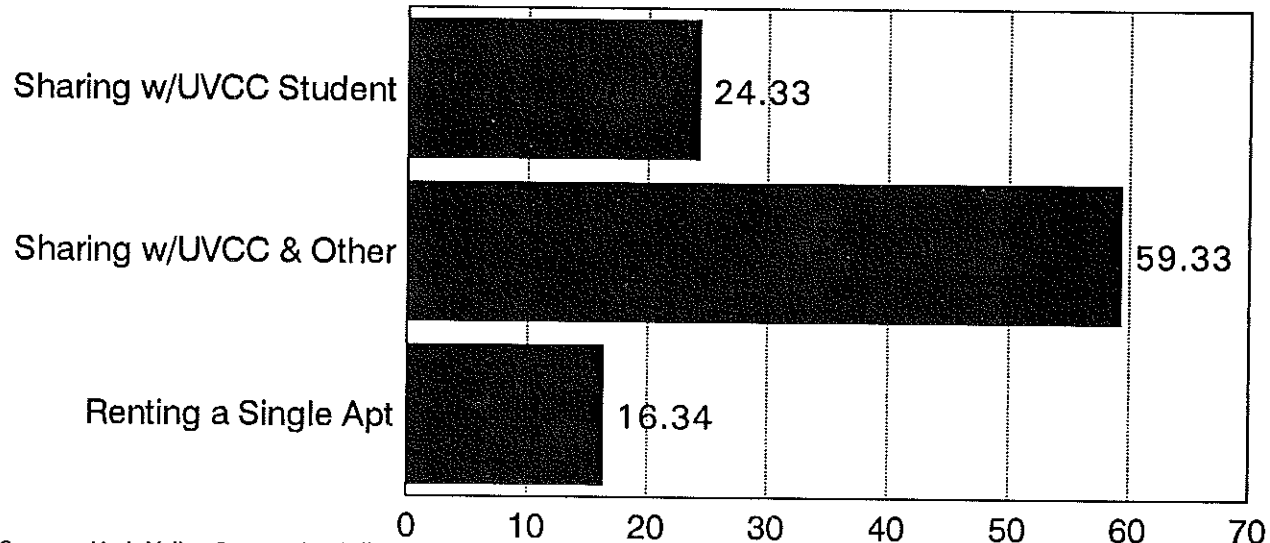
CONTINUING STUDENT SURVEY 1991



Source: Utah Valley Community College, Office of Institutional Research and Strategic Planning

IF YOU ARE SINGLE AND RENTING AN APARTMENT, ARE YOU

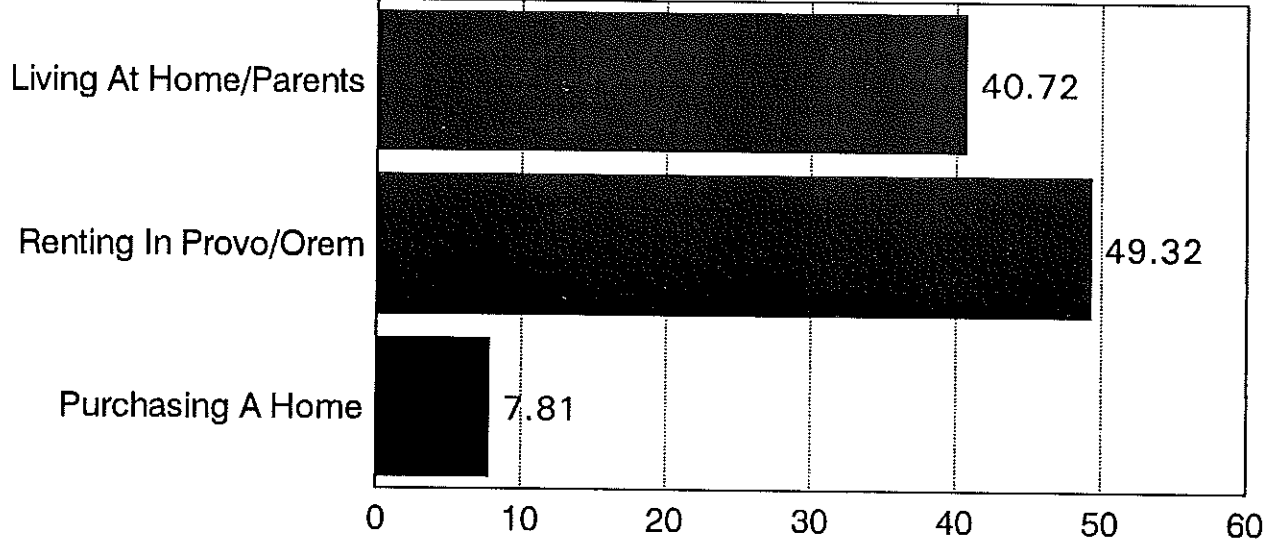
NEW AND CONTINUING STUDENT SURVEY



Source: Utah Valley Community College, Office of Institutional Research and Strategic Planning

WHICH OF THE FOLLOWING BEST DESCRIBES YOUR HOUSING ARRANGEMENT?

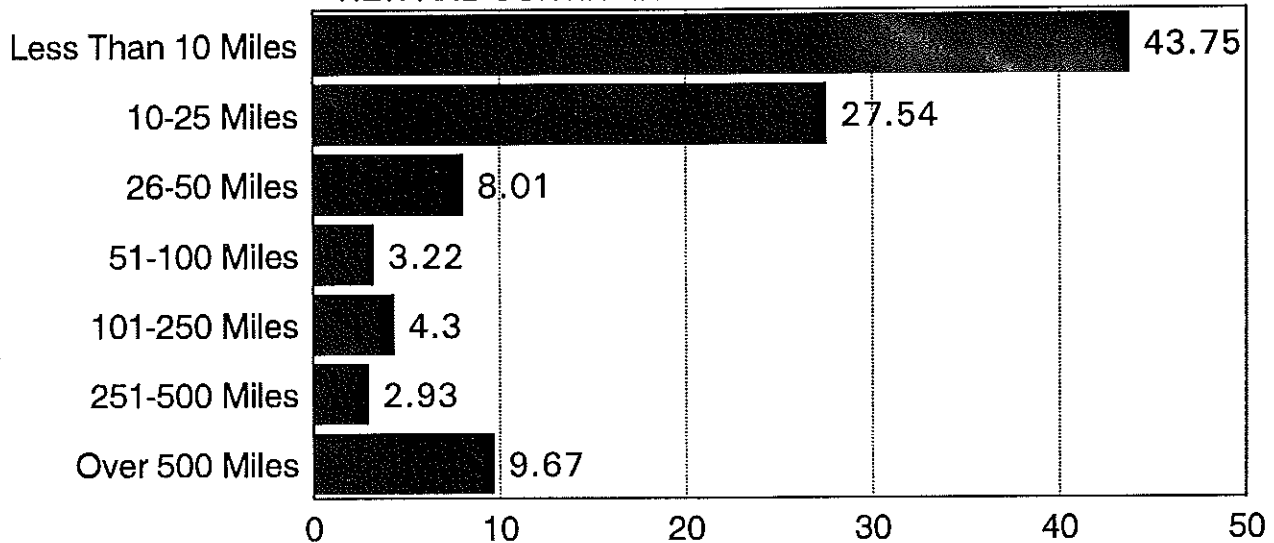
NEW AND CONTINUING STUDENT SURVEY



Source: Utah Valley Community College, Office of Institutional Research and Strategic Planning

HOW MANY MILES FROM UVCC IS YOUR PERMANENT RESIDENCE?

NEW AND CONTINUING STUDENT SURVEY



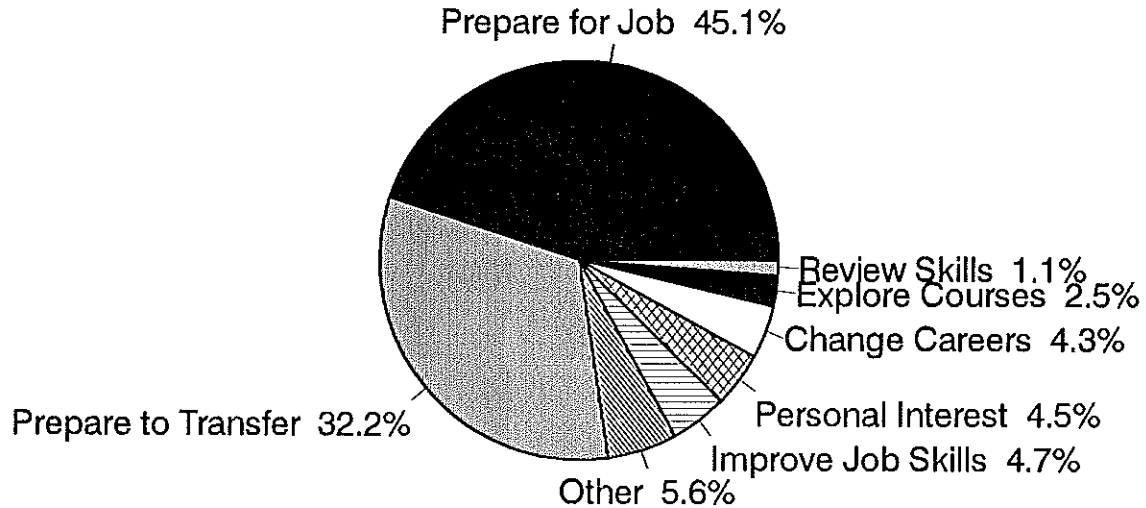
GRADUATE FOLLOW-UP SURVEY

At the completion of each academic year, UVCC graduates are contacted by an independent research firm and asked to respond to an extensive questionnaire about their experiences at UVCC.

During the 1991 - 1992 school year, 55 percent of all 1991 graduates were surveyed and their responses to pertinent questions are shown in the following graphs. The sample included 443 graduates.

WHAT WAS YOUR PRIMARY EDUCATIONAL OBJECTIVE WHEN YOU FIRST ENROLLED?

GRADUATE FOLLOW-UP SURVEY



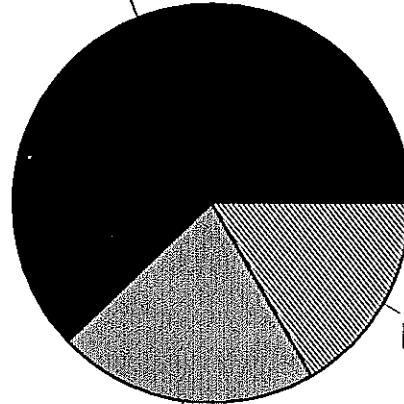
Source: Utah Valley Community College, Office of Institutional Research and Strategic Planning

1990-91
120

DID YOU ACHIEVE YOUR ULTIMATE EDUCATIONAL OBJECTIVE AT UVCC?

GRADUATE FOLLOW-UP SURVEY

Yes, Completely 62.2%



No 16.7%

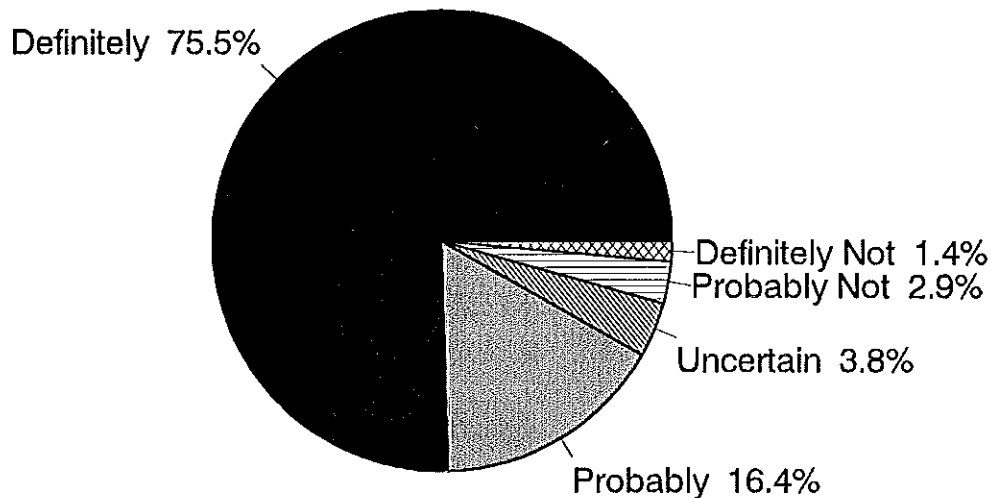
Yes, Partially 21.2%

Source: Utah Valley Community College, Office of Institutional Research and Strategic Planning

1990-91
121

DO YOU FEEL YOUR EXPERIENCES AT UVCC HAVE IMPROVED THE QUALITY OF YOUR LIFE?

GRADUATE FOLLOW-UP SURVEY

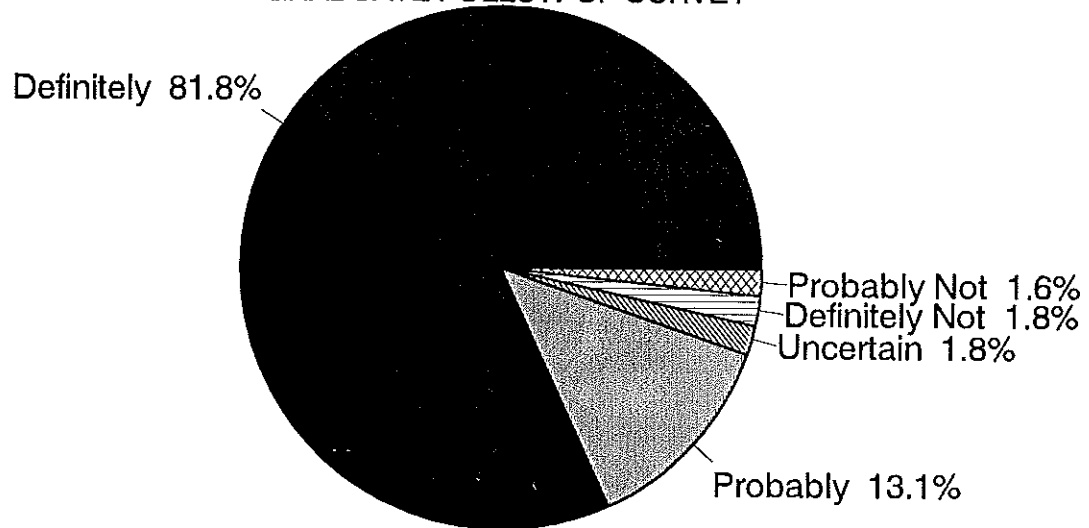


Source: Utah Valley Community College, Office of Institutional Research and Strategic Planning

1990-91
122

IF YOU COULD GO BACK, KNOWING WHAT YOU KNOW NOW, WOULD YOU STILL ATTEND UVCC?

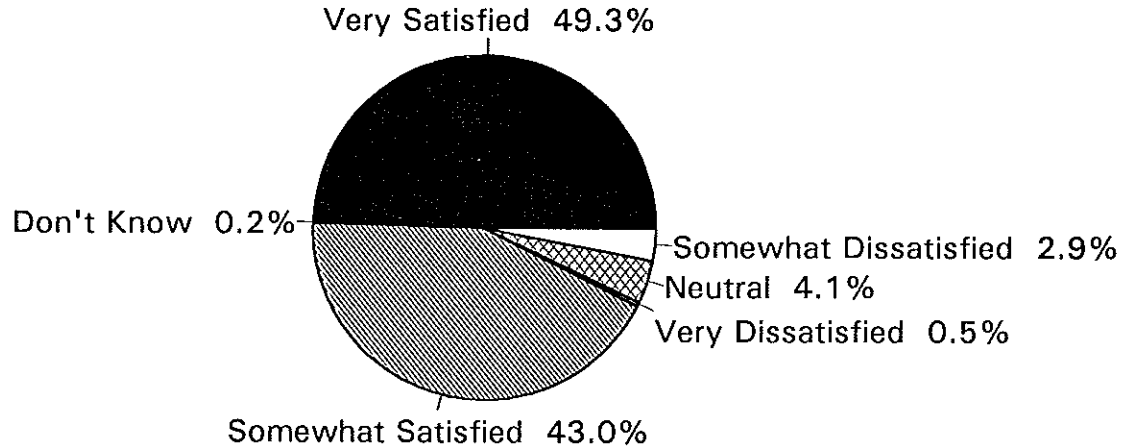
GRADUATE FOLLOW-UP SURVEY



Source: Utah Valley Community College, Office of Institutional Research and Strategic Planning

HOW SATISFIED WERE YOU WITH THE CONTENT OF COURSES AT UVCC?

GRADUATE FOLLOW-UP SURVEY



Source: Utah Valley Community College, Office of Institutional Research and Strategic Planning

HOW SATISFIED WERE YOU WITH THE QUALITY OF INSTRUCTION AT UVCC?

GRADUATE FOLLOW-UP SURVEY

Very Satisfied 49.6%

Don't Know 0.2%

Neutral 5.0%

Somewhat Dissatisfied 3.2%

Very Dissatisfied 1.1%

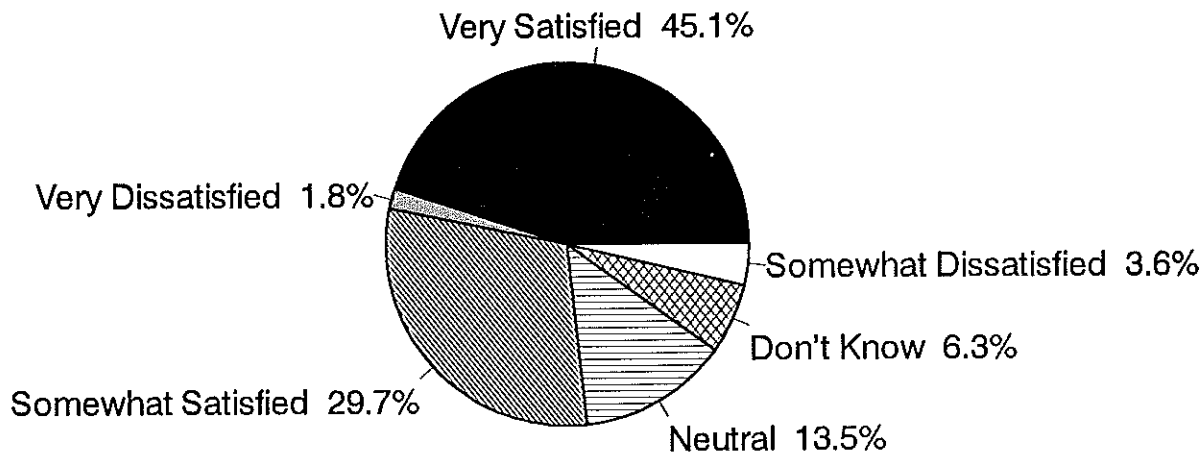
Somewhat Satisfied 41.0%

Source: Utah Valley Community College, Office of Institutional Research and Strategic Planning

1990-91
125

USEFULNESS OR RELEVANCE OF TRAINING TO YOUR CURRENT JOB?

GRADUATE FOLLOW-UP SURVEY

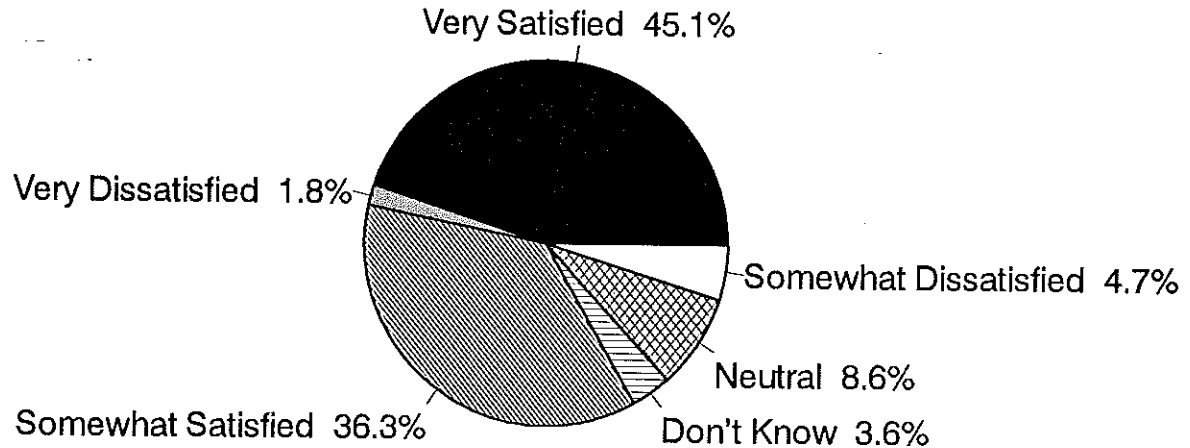


Source: Utah Valley Community College, Office of Institutional Research and Strategic Planning

1990-91
126

HOW SATISFIED WERE YOU WITH THE CAREER OR TRANSFER PREPARATION AT UVCC?

GRADUATE FOLLOW-UP SURVEY

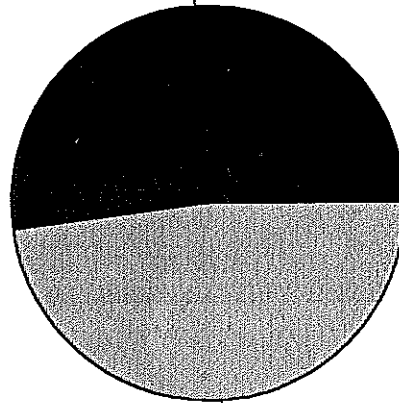


Source: Utah Valley Community College, Office of Institutional Research and Strategic Planning

ARE YOU CURRENTLY TAKING ANY CLASSES OR TRAINING?

GRADUATE FOLLOW-UP SURVEY

No 52.0%



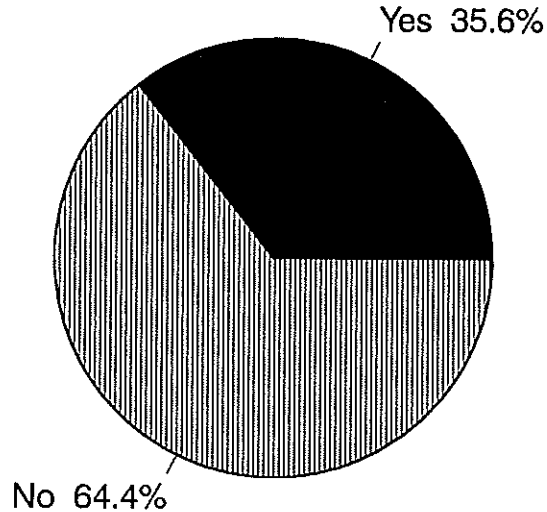
Yes 48.0%

Source: Utah Valley Community College, Office of Institutional Research and Strategic Planning

1990-91
128

AFTER GRADUATING FROM UVCC DID YOU ENROLL AT A 4-YEAR UNIVERSITY?

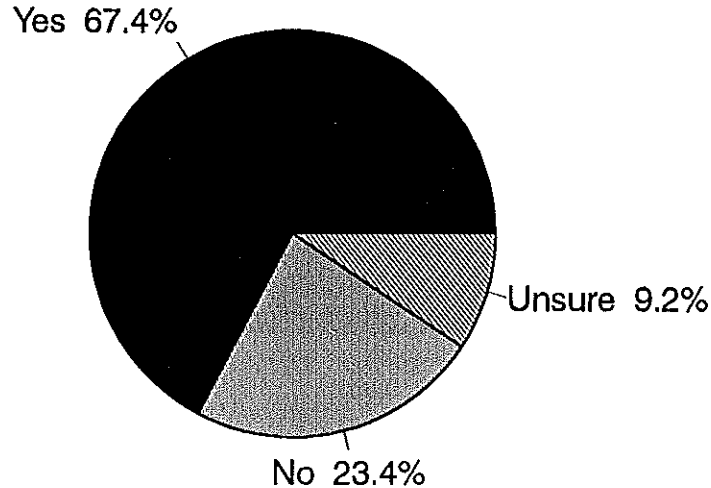
GRADUATE FOLLOW-UP SURVEY



Source: Utah Valley Community College, Office of Institutional Research and Strategic Planning

IF UVCC WERE TO BECOME A 4-YEAR SCHOOL WOULD YOU CONSIDER RETURNING FOR A BS?

GRADUATE FOLLOW-UP SURVEY

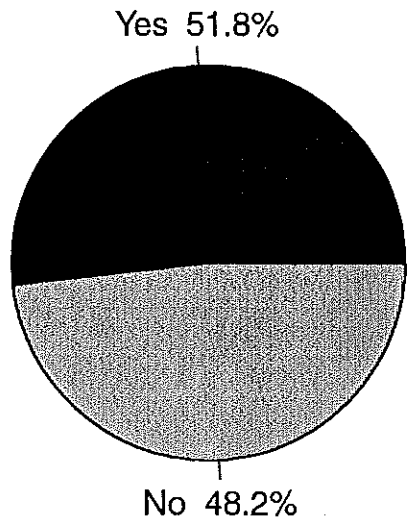


Source: Utah Valley Community College, Office of Institutional Research and Strategic Planning

1990-91
130

AFTER GRADUATING FROM UVCC, DID YOU LOOK FOR A FULL-TIME JOB?

GRADUATE FOLLOW-UP SURVEY

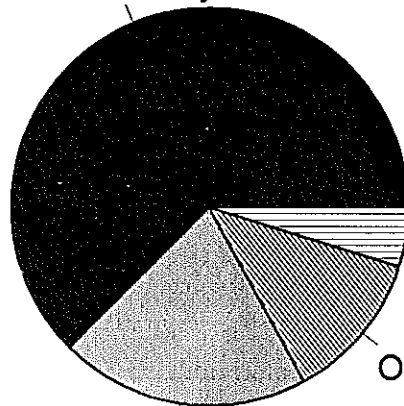


Source: Utah Valley Community College, Office of Institutional Research and Strategic Planning

WHICH OF THE FOLLOWING BEST DESCRIBES YOUR CURRENT EMPLOYMENT SITUATION?

GRADUATE FOLLOW-UP SURVEY

Full-Time or Military 62.6%



Unemployed 4.7%

Out of Labor Force 12.4%

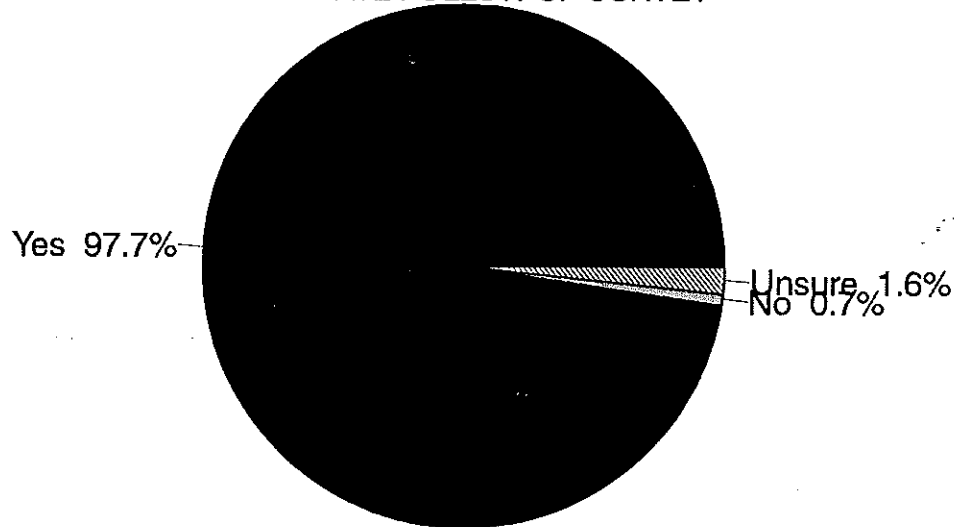
Part-Time 20.3%

Source: Utah Valley Community College, Office of Institutional Research and Strategic Planning

1990-91
132

WOULD YOU RECOMMEND ATTENDING UVCC TO YOUR FRIENDS AND ACQUAINTANCES?

GRADUATE FOLLOW-UP SURVEY



Source: Utah Valley Community College, Office of Institutional Research and Strategic Planning

FALL 1992 NEW STUDENT SURVEY

According to the Fall 1992 New Student Survey, 77 percent of new fall students work more than 10 hours per week.

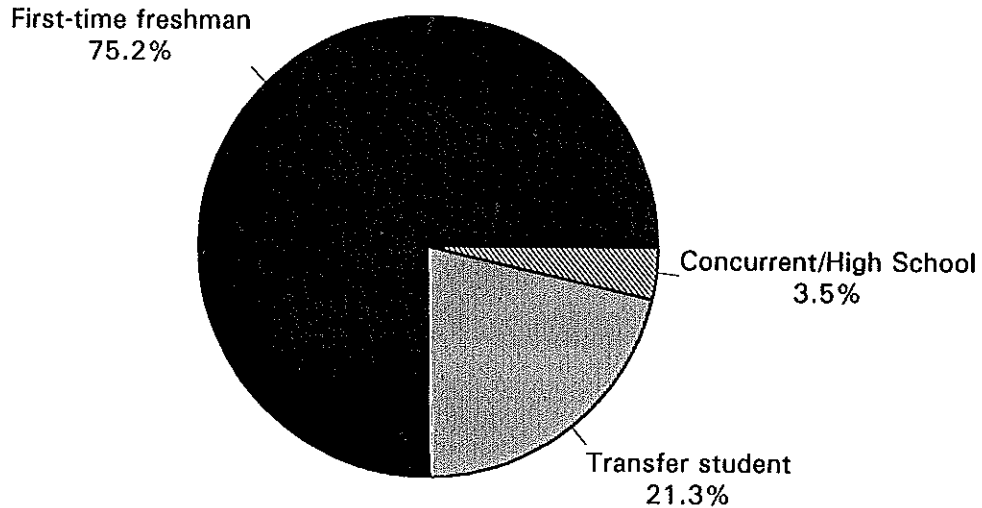
More than 2,500 new fall students were surveyed relative to family size, living arrangements, need for financial assistance and working schedules. It was discovered through this survey that: 25 percent of new fall students live within five miles of the school and an additional 25 percent live within 10 miles of the school.

Forty-seven percent of all new fall students live with parents or relatives and 27 percent live with other students.

Sixty percent of new fall students need financial assistance and 60 percent of new fall students come from families with five or more children.

What Is Your Student Status?

Fall 1992 New Student Survey

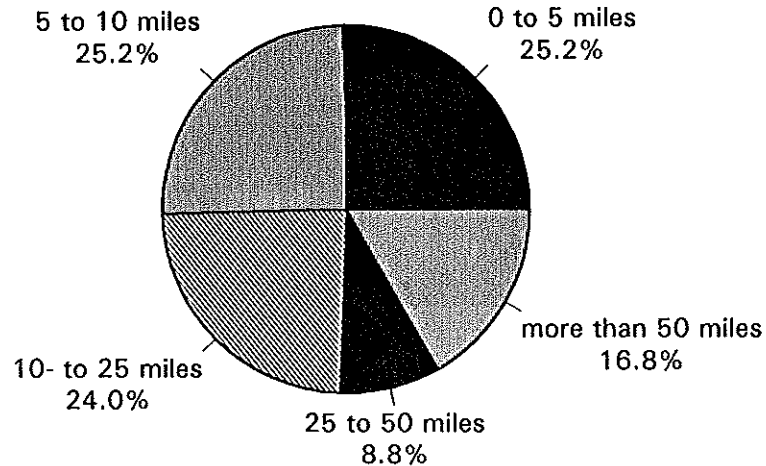


Source: Utah Valley Community College, Office of Institutional Research and Strategic Planning

n = 2530
135

How Far Is Your Home From UVCC?

Fall 1992 New Student Survey

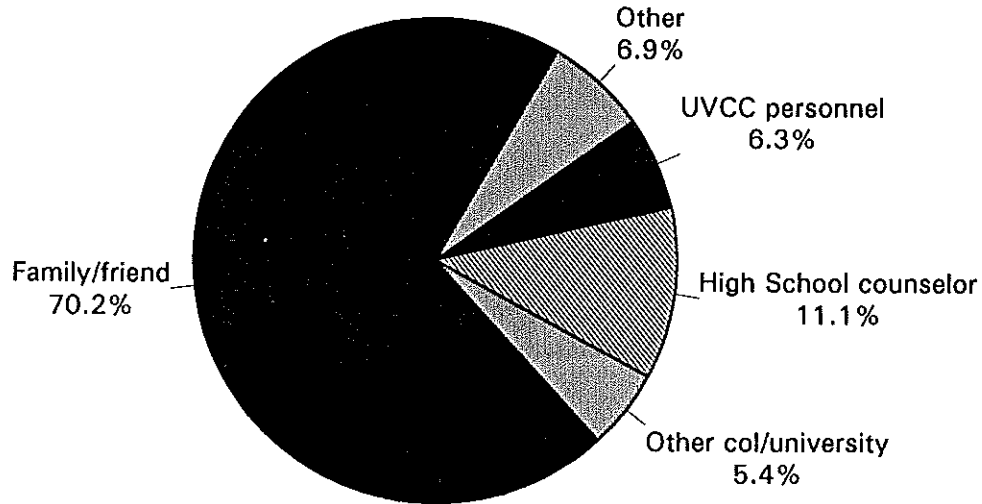


Source: Utah Valley Community College, Office of Institutional Research and Strategic Planning

n = 2530
136

How Did You Learn About UVCC?

Fall 1992 New Student Survey

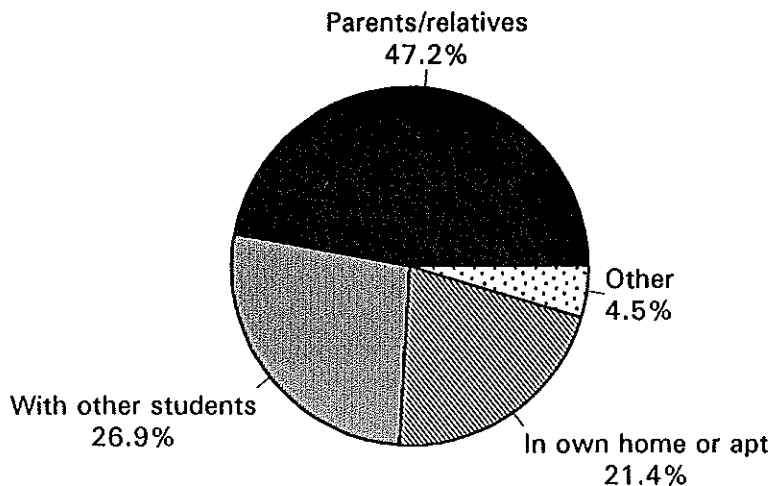


Source: Utah Valley Community College, Office of Institutional Research and Strategic Planning

n = 2530
137

What Are Your Living Arrangements?

Fall 1992 New Student Survey

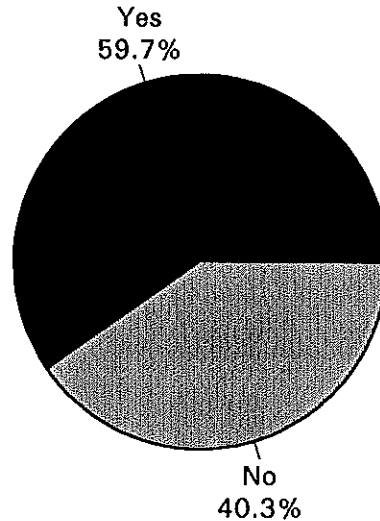


Source: Utah Valley Community College, Office of Institutional Research and Strategic Planning

n = 2530
138

Will You Need Financial Assistance?

Fall 1992 New Student Survey

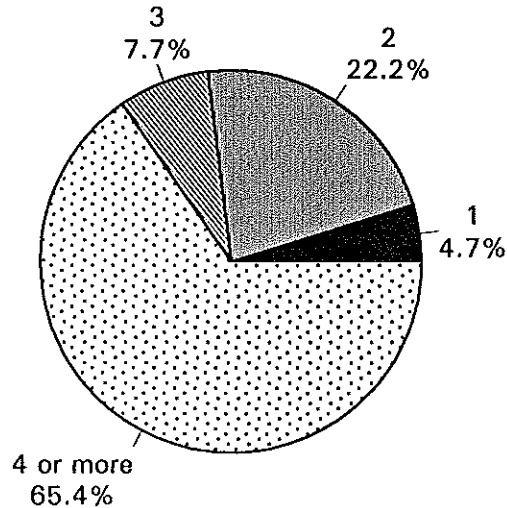


Source: Utah Valley Community College, Office of Institutional Research and Strategic Planning

n = 2530
139

How Many Semesters Do You Plan To Attend?

Fall 1992 New Student Survey

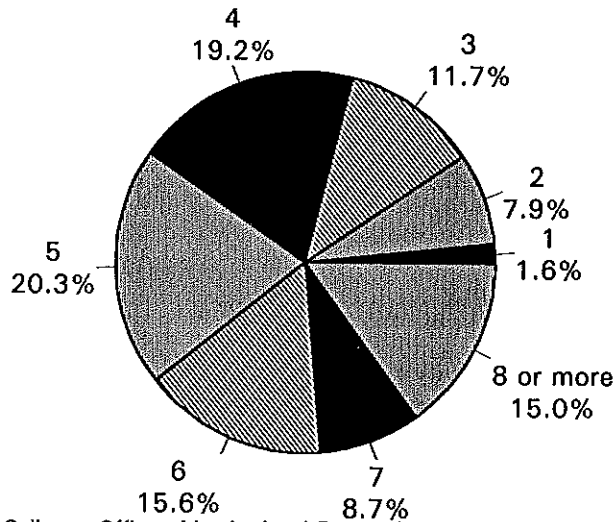


Source: Utah Valley Community College, Office of Institutional Research and Strategic Planning

n = 2530
140

How Many Children (including yourself) Are In Your Parents' Family?

Fall 1992 New Student Survey

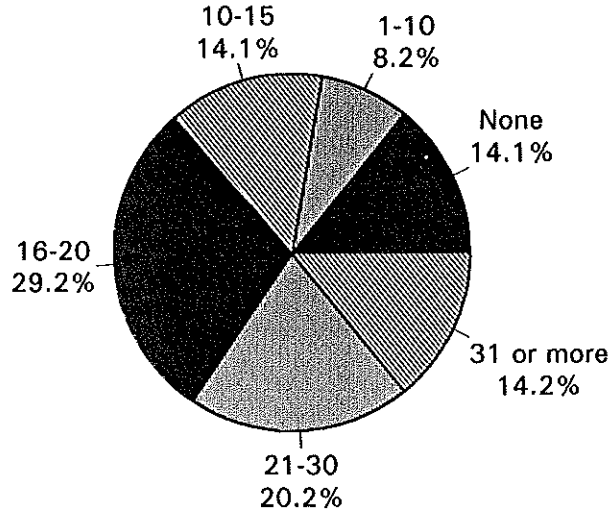


Source: Utah Valley Community College, Office of Institutional Research and Strategic Planning

n = 2530
141

How Many Hours Do You Plan To Work Each Week While Attending School?

Fall 1992 New Student Survey

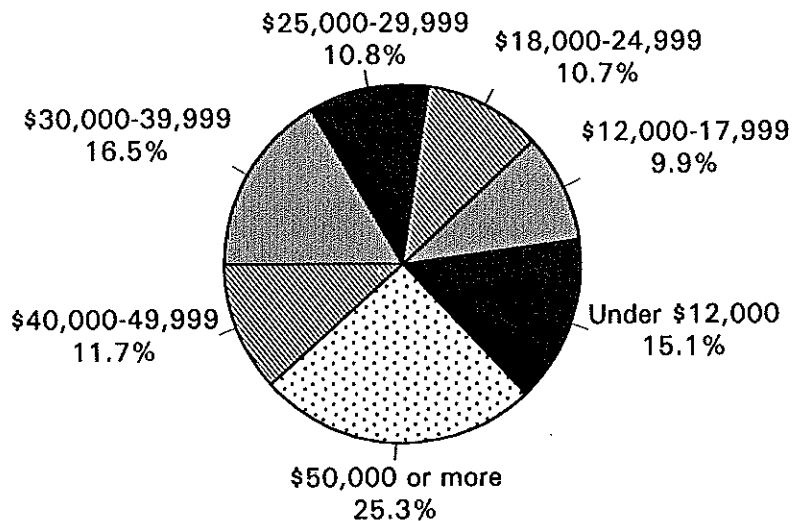


Source: Utah Valley Community College, Office of Institutional Research and Strategic Planning

n = 2530
142

What Is Your Approximate Family Income?

Fall 1992 New Student Survey

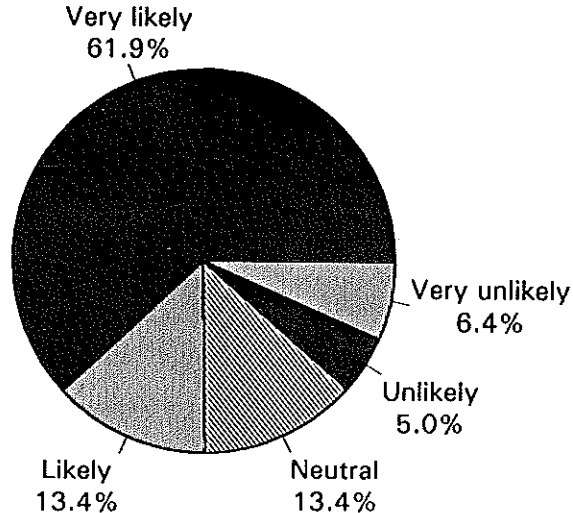


Source: Utah Valley Community College, Office of Institutional Research and Strategic Planning

n = 2530
143

How Likely Are You To Pursue A Four-Year Degree?

Fall 1992 New Student Survey

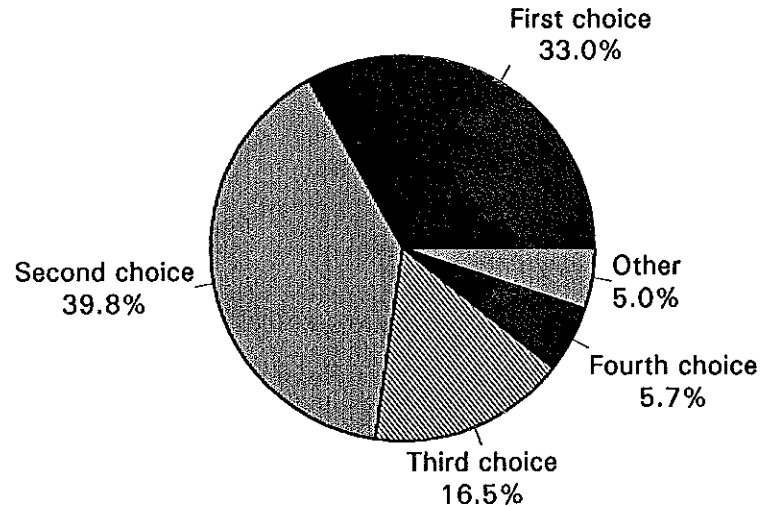


Source: Utah Valley Community College, Office of Institutional Research and Strategic Planning

n = 2530
144

If You Decide To Pursue A Four-Year Degree, Where Would UVCC Rank As An Option?

Fall 1992 New Student Survey

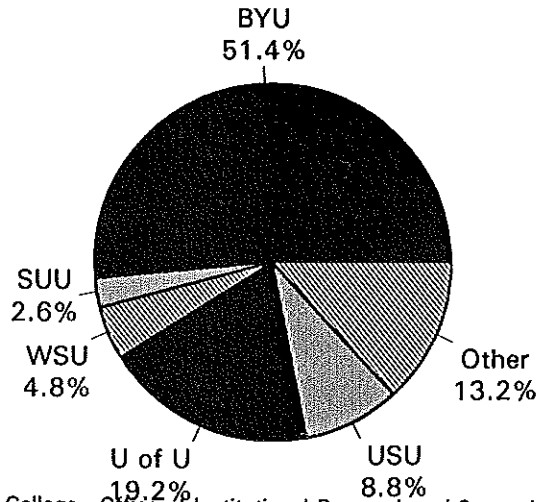


Source: Utah Valley Community College, Office of Institutional Research and Strategic Planning

n = 2530
145

If UVCC Was Not Your First Choice, Please Indicate Your First Choice

Fall 1992 New Student Survey

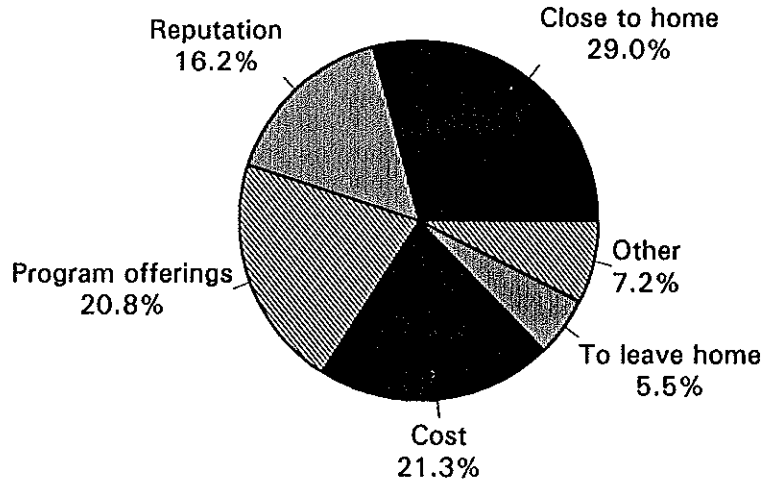


Source: Utah Valley Community College, Office of Institutional Research and Strategic Planning

n = 2530
146

Why Did You Choose To Attend UVCC?

Fall 1992 New Student Survey



Source: Utah Valley Community College, Office of Institutional Research and Strategic Planning

n = 2530
147

INDEX/GLOSSARY

Academic Affairs (Organizational Chart)	24
Ace/Pace Presidents	65
Administration and Institutional Advancement (Organizational Chart)	21
Advisory Committees, Accounting, Air Conditioning and Refrigeration Technology, Automotive Technology, Aviation Science, Building Construction & Construction Management, Business Management, Cabinetry and Architectural Woodwork, Child Education & Family Studies	69
Advisory Committees, Collision Repair, Computer Science & Information, Culinary Arts, Diesel Mechanics, Drafting	70
Advisory Committees, Education, Electrical Automation, Electronics & Computer Technology, Environmental Technology	71
Advisory Committees, Fashion Merchandising, Finance and Banking, Fire Science, Graphics Commercial Art, Hospitality Management, Human Services	72
Advisory Committees, International Business, Legal Assistant, Lineman Technology, Machine Tool Technology, Nursing	73
Advisory Committees, Office Technology Administration, Physical Plant Management, Professional Driving, Welding	74
After Graduating From UVCC Did You Enroll At A Four Year University?	129
After Graduating From UVCC, Did You Look For A Full-Time Job?	131
Age Distribution of Full-Time Faculty by Degree and Gender, August 1992	31
Age of Physical Facilities, Placed in Service, Square Footage	102
Are You A Financial Aid Applicant?, Entering Student	108
Are You Currently Taking Any Classes Or Training?	128

INDEX/GLOSSARY (continued)

Are You A Financial Aid Applicant?, Continuing Student	109
Athletics, Final Records and Conference Finishes	19
Average Credit Hours Per Student by School, Fall Semesters 1986-1992	47
Average Credit Hours Per Student, Fall Semester 1992 (bar graph)	39
Average Credit Hours Per Student, Fall Semesters 1985-1992 (bar graph)	48
Board of Trustees Chairs	29
Board of Trustees Members, Appointed as of June 16, 1992	28
Budget Office (Organizational Chart)	27
Citizenship of Foreign Students - Fall 1992 (map)	59
Citizenship of Foreign Students - Fall 1992	60
Clubs and Organizations, Alpha Kappa Epsilon, CCDC, Campus Venture, CAS-CASP	75
Clubs and Organizations, Cheerleaders, Chess, Cogito Ergo Pingo, Computer Club, DEX, Drafting Club	76
Clubs and Organizations, Ecumenical College Fellowship, Environmental Club, French Club, GAIA, German Club	77
Clubs and Organizations, Hewlett Packard, Intercollegiate Knights, International Student Club, Jipang, Karate Club, Lambda Delta Sigma,	78
Clubs and Organizations, LAUSA, Law Society, LDSSA, Math, MIDImuse, Native American Student Club	79
Clubs and Organizations, Outdoor Recreation and Rentals, Phi Beta Lambda, Phi Theta Kappa, Polynesian Club, Progressive Club	80
Clubs and Organizations, Racquetball, Rainbow Club, Rodeo Club, Russian Club, Sigma Gamma Chi, Ski Club	81

INDEX/GLOSSARY (continued)

Clubs and Organizations, Soccer, Student Literary Publications Club, Synergy, The College Times, VICA, USU/UVCC IMA	82
Clubs and Organizations, Utah Valley Collegiate Aero Club, Utah Valley Cyclists, UVCC Ballroom Dance Company, Women's Connection	83
College Name Changes	10
College Organizational Chart	20
College Presidents	10
College Relations (Organizational Chart)	22
College Calendar, 1993 Spring Semester	8
College Calendar, 1992 Fall Semester	7
College Calendar, 1993 Summer Term	9
County Resident/Non-Resident Headcount, Fall Semesters 1986-1992	41
Did You Achieve Your Ultimate Educational Objective At UVCC?	121
Do You Feel Your Experiences At UVCC Have Improved The Quality of Your Life?	122
Education and General Revenue Sources, 1992-1993 (pie chart)	88
Education and General Operating Funds Use Expenditure Category, 1992-1993 (pie chart) ...	86
Education and General Operating Funds Expenditure Purpose, 1992-1993 (pie chart)	87
Employee of the Year	18
Employment During First Term in College, Entering Student	104
Employment During First Term in College, Continuing Student	105
Enrollment Comparison - Annualized FTE Students (bar graph)	38
Enrollment Status, Entering Student	110
Enrollment Comparison of Utah Colleges/Universities, Fall 1991	49

INDEX/GLOSSARY (continued)

Enrollment Status, Continuing Student	111
Enrollment History, Fall Semesters 1982-1992 (bar graph)	40
Ethnic Distribution of Full-Time Faculty by Degree and Gender, August 1992	32
Faculty Senate Presidents	65
FALL 1992 NEW STUDENT SURVEY	134
Federal, State, and Private Gift Status Report 1991-1992	95
Financial Aid Activity Report 1991-1992	94
Former Board of Trustees Members	30
Fuel and Power Expenditures, 1985-1992 (bar graph)	90
Full-Time Equivalent Enrollment, Fall Semester 1992	37
Geographic Origin of Students, United States - Fall 1992	55
Geographic Origin of Students, United States - Fall 1992 (map)	54
Graduate Degrees and Certificates Awarded 1990-91 and 1991-92	64
GRADUATE FOLLOW-UP SURVEY	119
Headcount Distribution by Ethnic Group - Fall 1986-1992	52
Headcount by Area of Study, Fall Semesters 1985-1992 (bar graph)	46
Headcount Distribution by Age - Fall 1986-1992	51
Headcount Enrollment, Fall Semester 1992	36
History of Education and General Operating Budget and Appropriation 1982-1992 (bar graph)	89
History of Utah Valley Community College	2
History of State Appropriation Per FTE, 1979-1992	85
History of Education and General Operating Budgets and Appropriations 1979-1992	84

INDEX/GLOSSARY (continued)

How Many Hours Do You Plan To Work Each Week While Attending School?	142
How Long Have You Been Attending Our College?, Continuing Student	112
How Many Children (Including Yourself) Are In Your Parents' Family?	141
How Did You Learn About UVCC?	137
How Far Is Your Home From UVCC?	136
How Many Semesters Do You Plan To Attend?	140
How Many Miles From UVCC Is Your Permanent Residence?	118
How Satisfied Were You With The Career Or Transfer Preparation At UVCC?	127
How Satisfied Were You With The Content Of Courses At UVCC?	124
How Satisfied Were You With The Quality Of Instruction AT UVCC?	125
How Likely Are You To Pursue A Four-Year Degree?	144
If You Decide To Pursue A Four-Year Degree, Where Would UVCC Rank As An Option?	145
If UVCC Was Not Your First Choice, Please Indicate Your First Choice	146
If You Could Go Back, Knowing What You Know Now, Would You Still Attend UVCC?	123
If UVCC Were To Become A Four Year School Would You Consider Returning For A BS?	130
If You Are Single And Renting An Apartment, Are You:	116
If UVCC Was Not Your First Choice, What Type College Was Your First Choice?, Entering	113
Institutional Mission	1
Institutional Research and Strategic Planning (Organizational Chart)	23
Male/Female Headcount - Fall 1985-1992 (bar graph)	53
Marital Status, Continuing Student	115
Marital Status, Entering Student	114
Mean Age of Students, 1985-1992 (bar graph)	50

INDEX/GLOSSARY (continued)

NEW AND CONTINUING STUDENT SURVEY	103
Part-Time/Full-Time Headcount, Fall Semesters 1985-1992 (bar graph)	45
Part-Time/Full-Time Headcount, Fall Semesters 1986-1992	44
Physical Facilities, Building, Square Feet	97
Physical Facilities, Buildings in Progress	98
Physical Facilities, Priority Requests 1992	99
Physical Facilities, Square Feet (bar graph)	101
Physical Facilities, Type of Space	100
Preferred Classtime, Continuing Student	107
Preferred Classtime, Entering Student	106
Private Funding	96
Resident/Non-Resident Headcount, Fall Semesters 1985-1992 (bar graph)	42
Scholarship Activity Report 1991-1992	91
Student Body Presidents	15
Teacher of the Year	18
Tuition and Student Fees, Fall 1988, 1989, 1990, 1991, 1992	14
Universities Represented by Doctorates of Contract Faculty and Administrators, 1991-92	33
Usefulness Or Relevance Of Training To Your Current Job?	126
Utah State Board for Vocational Education Chairs	13
Utah Commissioners of Higher Education	12
Utah State Board of Regents	11
Utah State Board of Regent Chairs	12
Utah Valley Community College Alumni Association Board of Directors, 1992-1993	68

INDEX/GLOSSARY (continued)

Utah System of Higher Education - Headcount Enrollment by Utah County Residency (bar graph)	43
Utah Valley Community College Foundation Board, 1992-1993	66
Utah Valley Community College Foundation Board Members	67
What Is Your Approximate Family Income?	143
What Was Your Primary Educational Objective When You First Enrolled?	120
What Is Your Student Status?	135
What Are Your Living Arrangements?	138
Which Of The Following Best Describes Your Housing Arrangement?	117
Which Of The Following Best Describes Your Current Employment Situation?	132
Why Did You Choose To Attend UVCC?	147
Will You Need Financial Assistance?	139
Would You Recommend Attending UVCC To Your Friends And Acquaintances?	133

ACE stands for the Association of Classified Employees. This on-campus organization has been replaced by **PACE**. **PACE** is the on-campus organization of Professional, Administrative, and Classified Employees.

The **Associate in Applied Science Degree** offers students the specialized training needed in order to earn a living. A minimum of 16 semester hours of General Studies courses are required. General Studies courses seek to broaden perspectives and teach essential intellectual skills. An **Associate of Arts Degree** may be earned upon completion of the equivalent of two full-time years of college work. This degree will meet the general education/liberal arts requirements at all four-year colleges and universities in the Utah System of Higher Education. However, specific majors may require specific general education courses. An **Associate of Science Degree** may be earned upon completion of the equivalent of two full-time years of college work. This degree will meet the general education/liberal arts requirements at all four-year colleges and universities in the Utah System of Higher Education. However, specific majors may require specific general education courses.

A **Diploma** requires a minimum of 50 credits in a specialty area. All programs offering the Associate in Applied Science degree also offer Diplomas, except Child Education and Family Studies, Legal Assistant, and Graphics and Commercial Art.

FTE means Full Time Equivalent. Full Time Equivalent is equal to 15 semester hours of courses taken or taught.

SCH stands for Student Credit Hour.

STIT is the program for Short Term Intensive Training.