

## PREFACE

*This FACT BOOK is an annual publication of Utah Valley Community College and the Office of Institutional Research and Strategic Planning. The purpose of the FACT BOOK is to translate accumulated data into useful information to those within and outside our college environment.*

*Every effort has been made to include within this publication the data most often requested. A decision had to be made early in the development of the FACT BOOK to limit the published data. We invite the users of this book to freely comment on what data they would like to have included in the future. Please contact our office, (801) 222-8000 ext. 365, with your comments.*

*The Office of Institutional Research and Strategic Planning wishes to thank the individuals or departments who have contributed to this publication.*

*Nancy M. Smith*  
Nancy M. Smith, Ph.D.  
Director  
Office of Institutional Research  
and Strategic Planning

UTAH VALLEY COMMUNITY COLLEGE  
FACT BOOK  
1990-91

TABLE OF CONTENTS

GENERAL INFORMATION.....	1
ADMINISTRATION.....	18
FACULTY.....	29
ENROLLMENT.....	35
ENROLLMENT PROJECTIONS.....	54
STUDENT PROFILE.....	55
BUDGET & FINANCE.....	79
ECONOMIC IMPACT.....	85
SUPPORT.....	86
PHYSICAL FACILITIES.....	109

## CONTENTS

### GENERAL INFORMATION

History of Utah Valley Community College.....	1
College Calendar, 1990 Fall Semester.....	5
College Calendar, 1991 Spring Semester.....	6
College Calendar, 1991 Summer Term.....	6
College Presidents.....	7
College Name Changes.....	8
Student Body President History.....	8
Utah State Board of Regent Chairs.....	10
Utah Commissioners of Higher Education.....	10
Utah State Board of Education Chairs.....	11
Utah State Board for Vocational Education Chairs.....	11
Athletics, Final Records and Conference Finishes.....	12
Tuition and Student Fees, Fall 1986, 1987, 1988, 1989, 1990.....	13
Utah Valley Population, 1970, 1980, 1988, Change 1980-88.....	14
Population Growth Projections, 1988, Projected 2000.....	15
Utah County Growth Indicators.....	15
Utah Valley Employment by Occupation, 1987-88.....	16
Race and Sex Composition of Employed Persons in Utah Valley, 1987-88.....	17

## *HISTORY OF UTAH VALLEY COMMUNITY COLLEGE*

*Utah Valley Community College, Orem, is situated in the heart of Utah County. Nestled beneath mountains on all sides, the name Utah Valley has become synonymous with Utah County and is used interchangeably throughout the state. With a population of 260,000 it is the second largest county in the State and includes twenty incorporated cities. The College serves primarily the Mountainlands District of students with Utah County residents comprising percent of it's enrollment.*

*The College was established when the Utah State Legislature passed an appropriation of \$100,000 for the biennium of 1936-38 for vocational education. Central Utah residents who had been supported by government funding, wanted to upgrade their skills in order to obtain better jobs and many enrolled in vocational classes administered by the school districts. However, the school districts were not able to give adequate supervision to organize, conduct, coordinate, and supervise adult programs, and in the spring of 1938, Hyrum E. Johnson of Provo was appointed supervisor of vocational education for Utah and Heber Valleys.*

*In the fall of 1941 the scattered classes throughout the two valleys were moved to a central location in south Provo and the Fairgrounds Campus was enthusiastically welcomed by the staff and students. Provo School District assumed the financial supervision of the new school and both federal and state monies flowed through the District to the school. It became imperative that the school have proper identification and the name **Central Utah Vocational School** was selected. With the advent of World War II, most of the school's operating budget came from federal government funds for war production training.*

*The birth of the school as a state institution was March 15, 1945, when Governor Herbert B. Maw signed a bill appropriating \$50,000 to operate for the biennium of 1945-47. A second bill was introduced and adopted in 1947 making the school a permanent state institution without any cut-off date. In 1946 **Wilson W. Sorensen** was appointed director of the school by the Utah State Board for Vocational Education and was the chief executive officer until June 1982.*

*In 1948 a new site, located between 1200 and 1400 North on 150 East in Provo, was obtained. The site was purchased by the four school districts (Alpine, Nebo, Provo and Wasatch) as well as Provo City and Utah County, with the understanding, if the property were given to the school, the state would appropriate the money for buildings. The location of the campus was considered ideal because of accessibility to students from Provo High School, the Vocational School, or Brigham Young University.*

*In March 1953 the name of the school was changed from Central Utah Vocational School to **Utah Trade Technical Institute**. In March 1967 the name was again changed, this time to **Utah Technical College at Provo**.*

*In February 1966 the Utah State Board for Vocational Education approved granting Associate of Applied Science Degrees and on July 14, 1967, the State Board approved offering general education courses. In August of 1971 the Associate of Science Degree was approved.*

*Enrollment growth became so immense the Provo Campus was no longer adequate and a search for a new site was begun. Several locations in Provo and Orem were reviewed and a decision was made to purchase 185 acres in southwest Orem. This location was chosen because of its landscape, excellent traffic flow, and accessibility. The business education building, student center, heating plant, and auto trades building were occupied at the beginning of the 1976-77 school year.*

*In 1974 the Associate of Science Degree was discontinued, but approval was given by the Board of Regents to again award the degree in December 1980. In 1981 the Legislature approved granting an Associate of Science Degree in general education on a three-year probationary basis with permanent approval in 1985.*

*On June 1, 1982, Wilson W. Sorensen retired as President and Dr. J. Marvin Higbee was selected by the Board of Regents as the new President.*

*Since the move to the Orem Campus the College has continued to grow with a trades building, learning resource center, athletic center and administration building added. As classes and service facilities were moved from Provo to Orem the vacated areas were filled by new programs, thus maintaining a split campus. A new science building was occupied in fall 1989.*

*Beginning fall quarter 1985 articulation was completed with Weber State College to offer a four-year bachelors degree in electronic technology while students continue their advanced courses on this campus. In winter quarter 1987 the same opportunity was offered students in the computer information systems program.*

*In 1987 the legislature approved a name change better reflecting the location and mission of the College--Utah Valley Community College.*

*In October 1987 Dr. J. Marvin Higbee resigned as President and Dr. Lucille T. Stoddard was appointed Acting President until a new chief executive officer was selected.*

*Dr. Kerry D. Romesburg was appointed President of Utah Valley Community College on July 17, 1988.*

*The Associate of Arts Degree was approved by the Board of Regents in 1987 and in 1989 the Regents and State Legislature approved funding for the Associate Degree Nursing program.*

*October 21, 1988, the College was granted permission by the State Board of Regents to convert from the quarter to the semester calendar system. This change became effective fall semester 1990.*

*Accounting students will be able to receive their four-year bachelors degree from Utah State University by taking classes offered on this campus beginning fall semester 1990.*

*In 1989 the College added an International Studies Center to coordinate exchange programs, bring international students on campus, and assist in giving faculty exchange opportunities. During this same period Utah Valley Community College became one of the first community colleges in the United States to sign an exchange agreement with Soviet Russia. Exchange agreements have also been reached with Central America and Caribbean countries, China, Hong Kong, Japan, Taiwan and Germany.*

*Sources: A Miracle in Utah Valley--The Story of Utah Technical College 1941-1982 by Wilson W. Sorensen  
Utah Valley Community College--Office of Vice President for Academic Affairs  
Utah Valley Community College--Office of the President*

# COLLEGE CALENDAR

## 1990 FALL SEMESTER

Orientation and Advisement for New Students	June 25
Payment Deadline for Early & Priority Registrations	August 17
Open Registration	August 27, 28
Instruction Begins	August 29
Labor Day Holiday	September 3
Harvest Holiday	October 22
Last Day to Drop or Withdraw	November 7
Thanksgiving Holiday	November 21, 22, 23
Last Day of Classes	December 14
Final Examinations	December 17, 18, 19, 20
Fall Semester Ends	December 20



# COLLEGE CALENDAR

## 1991 SPRING SEMESTER

Early Registration for Continuing and Readmitted Students  
Instruction Begins  
Human Rights Day  
President's Day Holiday  
Easter Holiday  
Last Day of Classes  
Final Examinations  
Spring Semester Ends  
Commencement

November 12 - December 21  
January 8  
January 21  
February 18  
March 29  
April 23  
April 25, 26, 29, 30  
April 30  
May 1

## 1991 SUMMER TERM

Instruction Begins  
Independence Day Holiday  
First Block Ends  
Second Block Begins  
Pioneer Day Holiday  
Last Day of Classes

June 3  
July 4  
July 5  
July 8  
July 24  
August 9

## COLLEGE PRESIDENTS

Mr. Wilson W. Sorensen	1946-1982
Dr. J. Marvin Higbee	1982-1988
Dr. Kerry D. Romesburg	1988-present

## COLLEGE NAME CHANGES

1941	Central Utah Vocational School
1963	Utah Trade Technical Institute
1967	Utah Technical College at Provo
1987	Utah Valley Community College

Source: Utah Valley Community College, Office of the President

## STUDENT BODY PRESIDENTS

Don A. Taylor	Spanish Fork, Utah	1946-1947
Mark H. Nilsen	Provo, Utah	1947-1948
Lee Russell Cardall	Salt Lake City, Utah	1948-1949
Thomas Donald Forsyth	Provo, Utah	1949-1950
Bill Hales	Pocatello, Idaho	1950-1951
Mark Anderson	Provo, Utah	1951-1952
William H. White	Goshen, Utah	1952-1953
Calvin Davies	Panguitch, Utah	1953-1954
Clark Jolley	Pleasant Grove, Utah	1954-1955
Blane Elton	Santaquin, Utah	1955-1956
Lynn Powell	Nephi, Utah	1956-1957
James G. Goodman	Roy, Utah	1957-1958
William Nuttall	Provo, Utah	1958-1959
Duane Johnson	Showlow, Arizona	1959-1960
Duane Johnson	Showlow, Arizona	1960-1961
Paul Hart	Orem, Utah	1961-1962
Robert Button	Provo, Utah	1962-1963
Glen LaVar Cox	Hinkley, Utah	1963-1964
Chuck Goodyear	Indianapolis, Indiana	1964-1965
Donald P. Fordham	Pleasant Grove, Utah	1965-1966
Jim Tilson	Spanish Fork, Utah	1966-1967
Gary Houser	Orem, Utah	1967-1968
Bruce Smith	Orem, Utah	1968-1969

## STUDENT BODY PRESIDENTS

(continued)

Doug Wright	Provo, Utah	1969-1970
Richard L. Evans	Orem, Utah	1970-1971
Norm Thorson	Provo, Utah	1970-1971
Ken Law	Springville, Utah	1971-1972
Terry K. Holt	Brigham City, Utah	1972-1973
Randy Kidman	Ogden, Utah	1973-1974
LaVerl Crosby	Provo, Utah	1974-1975
Mel Poulsen	Richfield, Utah	1975-1976
William Reese	Vernal, Utah	1976-1977
Blake Buhler	American Fork, Utah	1977-1978
Bruce Burnett	Provo, Utah	1978-1979
Lee Barrus	Othello, Washington	1979-1980
Mark Fisher	Lanham, Maryland	1980-1981
Kerry Graves	Mapleton, Utah	1981-1982
Scott Banasky	Green River, Utah	1982-1983
Gordon Wilson	Lehi, Utah	1983-1984
Jay Deuel	Tucson, Arizona	1984-1985
Bobby Thomas	California	1985-1986
George Marshall	Orem, Utah	1986-1987
Ben Gould	Orem, Utah	1987-1988
Jim Woods	Provo, Utah	1988-1989
Deryn Young	Alton, Utah	1989-1990
Kelly Bitters	Orem, Utah	1990-1991

Source: Utah Valley Community College, Office of the Vice President for Student Services

## UTAH STATE BOARD OF REGENT CHAIRS

Peter W. Billings	1969-1973
Donald B. Holbrook	1973-1973
George G. Hatch	1973-1977
Donald B. Holbrook	1977-1981
Kem C. Gardner	1981-1985
Sue Marie Young	1985-1987
W. Eugene Hansen	1987-1989
Douglas S. Foxley	1989-present

## UTAH COMMISSIONERS OF HIGHER EDUCATION

G. Homer Durham	1969-1976
Terrel H. Bell	1976-1981
Arvo Van Alstyne	1981-1985
Wm. Rolfe Kerr	1985-present

Source: Office of the Utah Commissioner of Higher Education

## UTAH STATE BOARD OF EDUCATION UTAH STATE BOARD FOR VOCATIONAL EDUCATION CHAIRS

1990-present	Jay Liechty	1970-72	Helen B. Ure
1988-90	Ruth Hardy Funk	1968-70	LeGrand P. Backman
1985-88	Keith T. Checketts	1966-68	Lynn S. Richards
1984-85	M. Richard Maxfield	1964-66	Sheldon S. Allred
1982-84	Oscar McConkie	1962-64	LeGrand P. Backman
1981-82	Jay Monson	1960-62	Moroni H. Brown
1980-81	W. Dean Belnap	1958-60	W. C. Cole
1979-80	Lila Bjorklund	1956-58	Charles A. White
1978-79	Jay Monson	1954-56	R. V. Larson
1977-78	W. Dean Belnap	1952-54	Rulon Hinkley
1976-77	Joan Burnside	1950-52	William O. Bentley
1975-76	Reuben D. Law	1944-50	E. Allen Bateman
1973-75	W. Robert Wright	1940-44	Charles H. Skidmore
1972-73	John L. Owen		

Source: Utah State Office of Education

## ATHLETICS FINAL RECORDS AND CONFERENCE FINISHES

	<u>1982-83</u>	<u>1983-84</u>	<u>1984-85</u>	<u>1985-86</u>	<u>1986-87</u>	<u>1987-88</u>	<u>1988-89</u>	<u>1989-90</u>
<b>WOMEN</b>								
Basketball	0-14 (6th)	6-8 (4th)	20-3 (1st)	25-1 (1st)	23-4 (1st)	23-4 (1st)	17-8 (5th)	26-4(1st)
Softball	19-16 (2nd)	19-14 (2nd)	27-8 (1st)	17-12 (1st)	22-17 (1st)	20-6(1st)		
Volleyball	26-5 (2nd)	29-8 (1st)	25-6 (2nd)	30-8 (1st)	21-12 (2nd)	35-6 (1st)	26-5 (1st)	23-9(1st)
Rodeo	3rd	2nd	3rd	4th	3rd	3rd	3rd	2nd
<b>MEN</b>								
Basketball	12-16 (4th)	18-12 (4th)	18-12 (3rd)	21-11 (1st)	16-14 (5th)	22-10 (4th)	29-5 (1st)	22-12(2nd)
Baseball	30-10 (1st)	28-12 (1st)	19-18 (2nd)	30-15 (1st)	18-19 (1st)	21-16 (2nd)	33-11 (2nd)	19-15(1st)
Rodeo	3rd	3rd	3rd	2nd	2nd	3rd	1st	2nd

Source: Utah Valley Community College, Sports Information Director  
Utah Valley Community College, Rodeo Club

## TUITION AND STUDENT FEES

	<u>FALL 1986</u>	<u>FALL 1987</u>	<u>FALL 1988</u>	<u>FALL 1989</u>	<u>FALL 1990</u>
<b>Resident</b>					
Based on:					
5 Credit Hours	\$151	\$161	\$169	\$178	\$279
10 Credit Hours	\$246	\$266	\$279	\$308	\$487
15 Credit Hours	\$312	\$342	\$363	\$389	\$597
<b>Non-Resident</b>					
Based on:					
5 Credit Hours	\$374	\$400	\$429	\$457	\$718
10 Credit Hours	\$644	\$705	\$749	\$818	\$1,309
15 Credit Hours	\$831	\$927	\$995	\$1,071	\$1,650

The tuition and fee schedule is partially linear; therefore, the amounts charged for tuition and fees change at each increment of total credit hours enrolled. The above figures show the amounts for three of these increments: 5, 10 and 15 credit hours.

Source: Utah Valley Community College, Fall Quarter 1986, 1987, 1988, 1989 and Fall Semester 1990 Class Schedules.



## UTAH VALLEY POPULATION

<u>AREA</u>	<u>1970</u>	<u>1980</u>	<u>1988</u>	CHANGE
				<u>1980-88</u> <u>(Percent)</u>
Provo	53,131	73,907	80,300	8.7
Orem	25,729	52,399	67,400	28.6
American Fork	7,713	12,417	16,300	31.3
Springville	8,790	12,101	14,800	22.3
Pleasant Grove	5,327	10,669	14,000	31.2
Spanish Fork	7,284	9,825	12,000	22.1
Payson	4,501	8,246	10,400	26.1
Lehi	4,659	6,848	8,800	28.5
Lindon	1,644	2,796	3,800	35.9
Mapleton	1,980	2,726	3,400	24.7
Alpine	1,047	2,649	3,600	35.9
Highland	--	2,435	3,900	60.1
Salem	1,081	2,233	2,800	25.4
Santaquin	1,236	2,175	2,900	33.3
Genola	424	630	760	20.6
Goshen	459	582	760	30.6
Cedar Hills	--	571	720	26.1
Elk Ridge	--	381	550	44.4
Unincorporated	12,771	14,516	15,600	7.5
<b>COUNTY TOTAL</b>	<b>137,776</b>	<b>218,106</b>	<b>262,790</b>	<b>20.5</b>

Source: UVEDA, (Utah Department of Employment Security, Labor Market Information)

## POPULATION GROWTH PROJECTIONS

LOCATION	1988	1970-1988	PROJECTED 2000	1988-2000
	POPULATION TOTAL	PERCENT INCREASE	POPULATION TOTAL	PERCENT INCREASE
UTAH COUNTY	262,790	89.0	310,000	18.3
SALT LAKE COUNTY	705,000	53.7	800,000	13.5
WASATCH FRONT	1,309,000	59.3	1,500,000	14.6

## UTAH COUNTY GROWTH INDICATORS

YEAR	ELEMENTARY AND SECONDARY			ANNUAL	TOTAL FIRMS	WHOLESALE AND RETAIL	NON-AG MONTHLY	PER	JOB
	POPULATION JULY 1	SCHOOL ENROLLMENT	LABOR FORCE	UNEMPLOYMENT RATE		FIRMS	AVERAGE WAGE	CAPITA INCOME	OPENINGS RECEIVED
1970	139,000	36,510	47,000	6.2	1,934	702	455	2,600	5,425
1975	166,000	40,072	61,300	6.3	2,572	866	653	3,700	9,578
1980	221,000	49,821	82,200	7.2	3,893	1,068	992	5,900	11,936
1985	250,000	61,178	93,400	6.5	4,142	1,244	1,213	8,200	11,037
1986	523,000	62,156	97,600	6.3	4,215	1,256	1,233	8,600	9,392
1987	258,000	63,150	99,600	6.9	4,206	1,283	1,247	8,900	13,828
1988	262,000	66,725	100,500	4.2	4,271	1,322	1,318	10,100	14,714

Source: UVEDA, (Utah Job Service)

## UTAH VALLEY EMPLOYMENT BY OCCUPATION 1987-1988\*

<u>Occupation</u>	<u>Employed Persons</u>	
	<u>1987</u>	<u>1988</u>
Professional, Technical & Related	17,045	20,300
Nonfarm Managers & Administrators	8,300	9,200
Sales Workers	9,430	10,400
Clerical Workers	12,160	14,400
Craftsmen, Foremen & Related	14,696	14,900
Operatives, except Transportation	10,468	11,800
Transport Equipment Operatives	1,811	2,000
Nonfarm Laborers	4,369	4,800
Service Workers	12,248	14,400
Private Household Workers	511	600
Farm Workers	2,025	2,200
<b>TOTAL</b>	<b>93,063</b>	<b>105,000</b>

\* Most current data available

Source: UVEDA, (Utah Department of Employment Security, "Affirmative Action Information", 1988)

RACE AND SEX COMPOSITION OF EMPLOYED PERSONS  
IN UTAH VALLEY LABOR MARKET  
1987-1988\*

<u>Race/Sex</u>	<u>Percent</u>	
	<u>1987</u>	<u>1988</u>
White (Non-Hispanic)	95.6	95.7
Black (Non-Hispanic)	0.1	0.1
Hispanic	2.3	2.2
Other	2.0	2.0
Male	59.2	53.9
Female	40.8	46.1

\* Most current data available

Source: UVEDA, (Utah Department of Employment Security, "Affirmative Action Information", 1988)

## CONTENTS

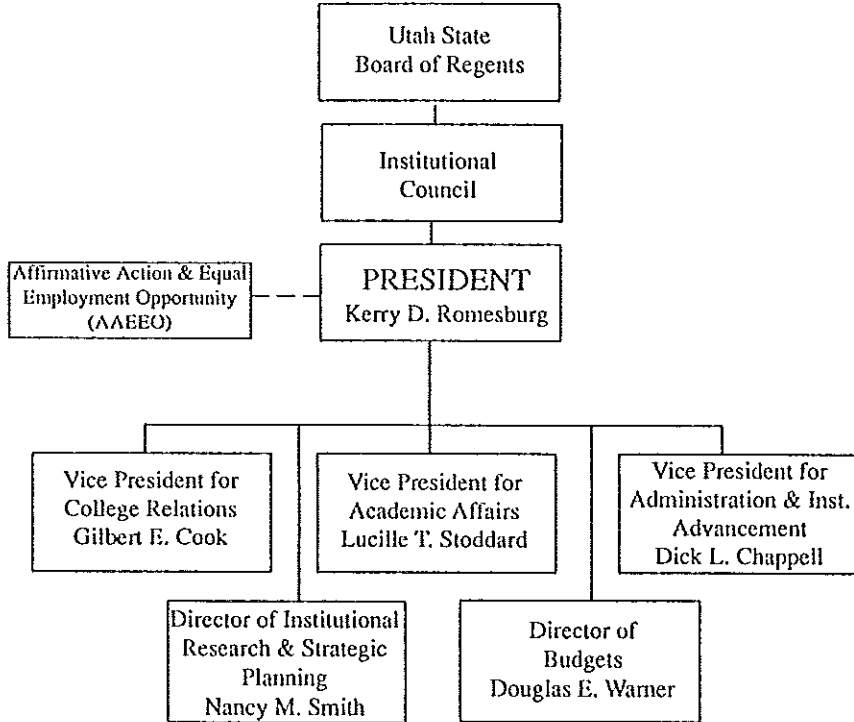
### ADMINISTRATION

Institutional Mission.....	18
College Organizational Chart.....	19
Administrative Services (Organizational Chart).....	20
College Relations (Organizational Chart).....	21
Budget Office, Institutional Research and Strategic Planning (Organizational Chart).....	22
Academic Affairs (Organizational Chart).....	23
Academic Affairs (Organizational Chart, continued).....	24
Academic Affairs (Organizational Chart, continued).....	25
Institutional Council Members, Appointed as of June 30, 1990.....	26
Institutional Council Chairs, Since July 1978.....	27
Former Institutional Council Members.....	28

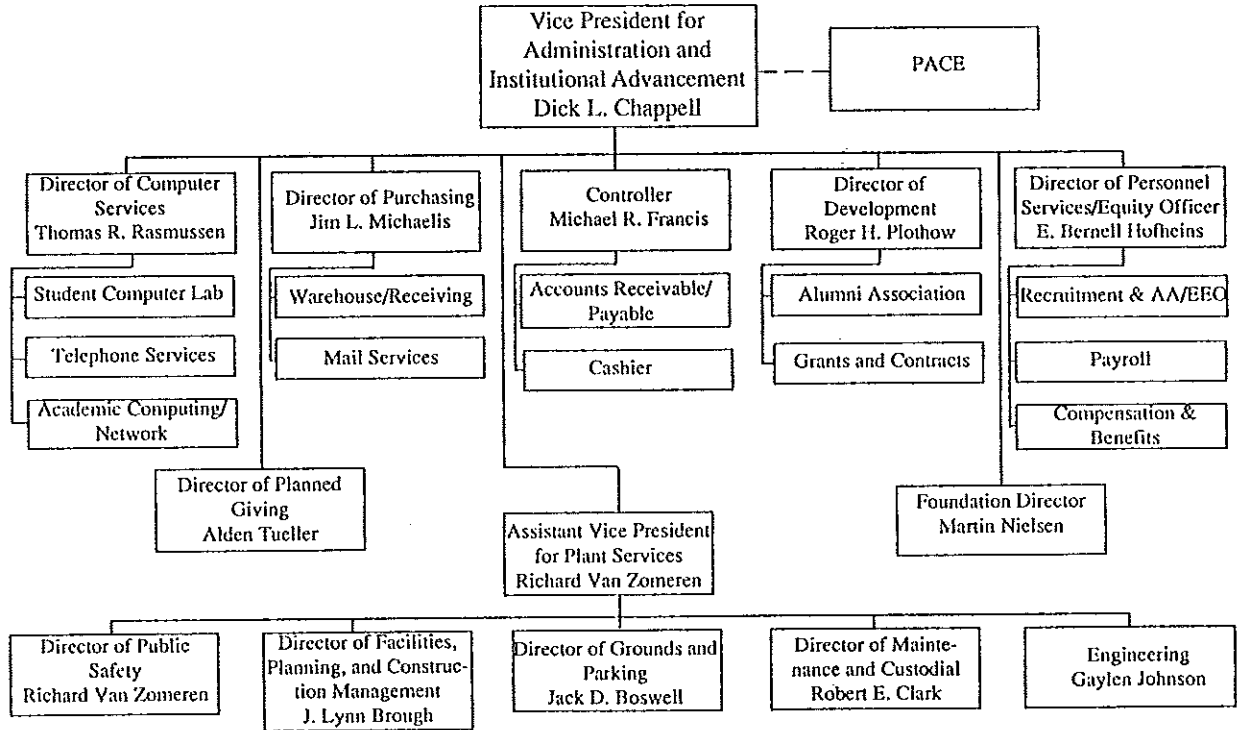
## *INSTITUTIONAL MISSION*

*Utah Valley Community College is dedicated to providing a broad range of quality academic, vocational, technical, and social opportunities and experiences designed to encourage and assist students in attaining their goals and maximizing their talents and potential, personally and professionally. The college is committed to meeting student and community needs for occupational training; providing developmental, general, and transfer education; meeting the needs for continuing education for personal enrichment and career enhancement; and providing diverse social, cultural, and international opportunities, and student support services.*

# Utah Valley Community College Organizational Chart

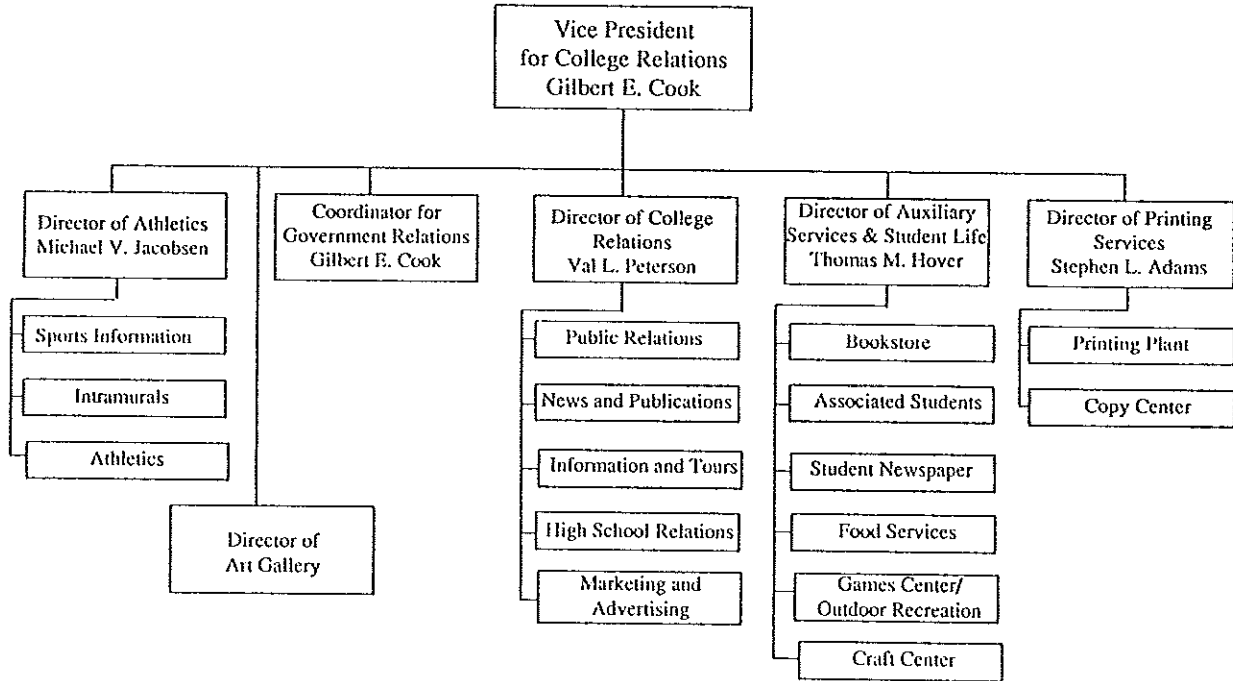


# Administrative Services

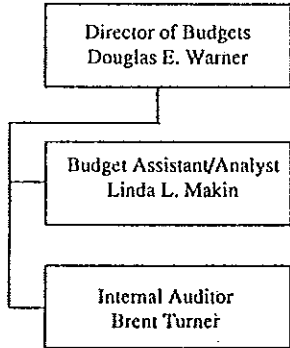




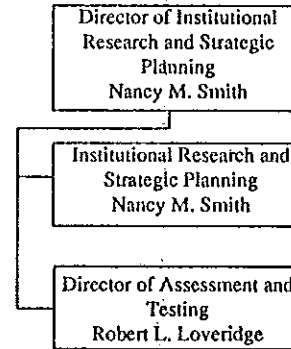
# College Relations



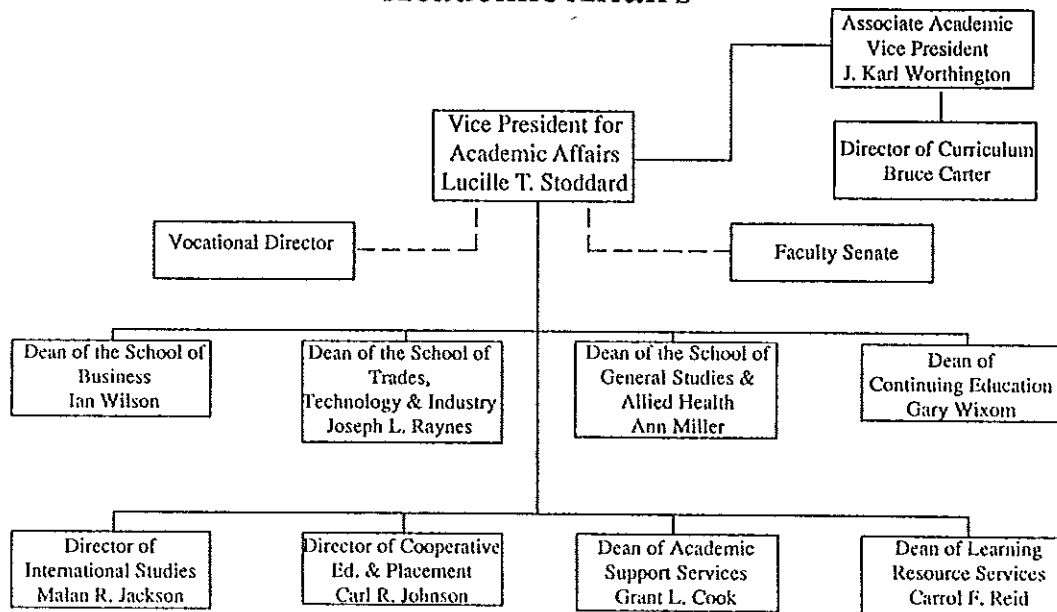
## Budget Office



## Institutional Research and Strategic Planning

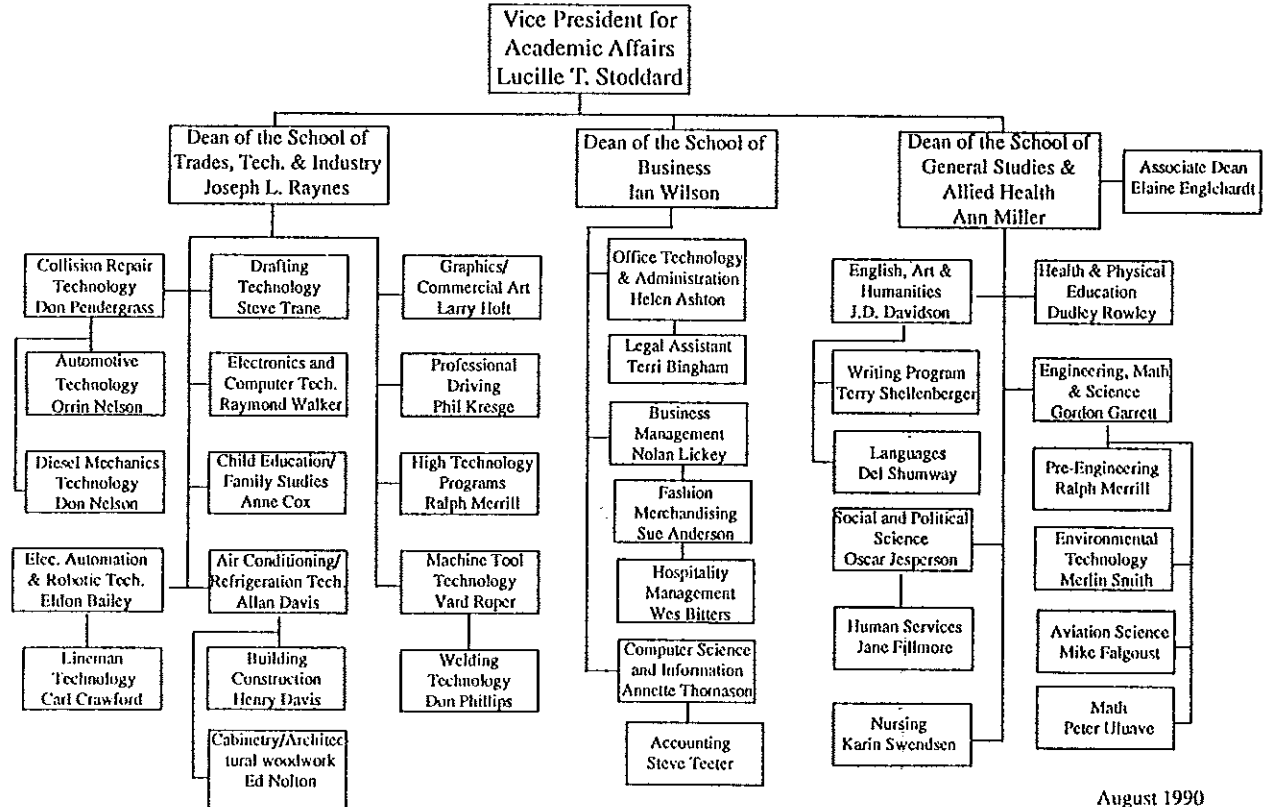


# Academic Affairs



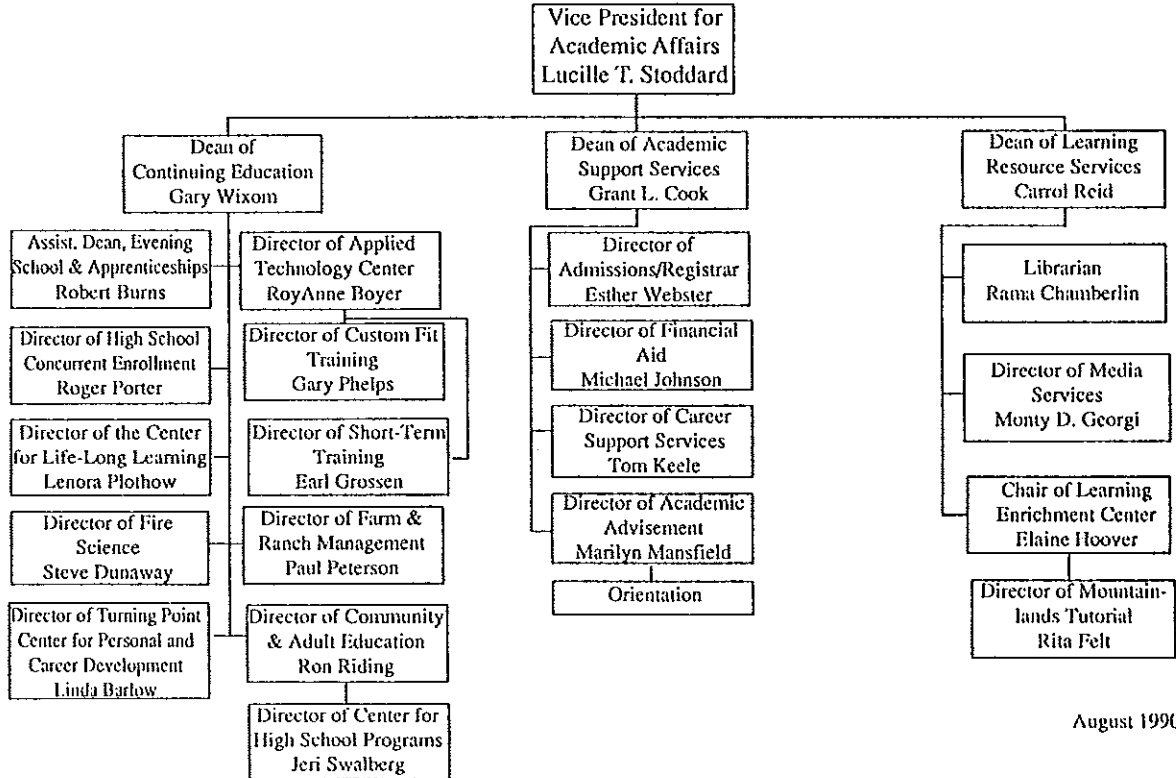
# Academic Affairs

(Continued)



# Academic Affairs

(Continued)



## INSTITUTIONAL COUNCIL

Members Appointed by the Governor of Utah  
as of June 30, 1990

### NAME

### TERM EXPIRES

Alan C. Ashton	6/30/93
Kelly Bitters	6/30/91
Joseph A. Cannon	6/30/93
Brent J. DeMille	6/30/91
Ray M. Harding, Jr.	6/30/91
Nancy M. Heuston	6/30/91
DeLance W. Squire, Chair	6/30/93
Jay Weaver	6/30/91
Brent J. Welch	6/30/91
Mary Anne Q. Wood	6/30/93

Source: Utah Valley Community College, Office of the President

## INSTITUTIONAL COUNCIL CHAIRS

	<u>When Elected</u>
Grant Burgon	July 1978
Charles Bates	July 1980
Howard Pace	July 1982
Mary Anne Wood	September 1985
DeLance Squire	July 1989

Source: Utah Valley Community College, Office of the President

## FORMER INSTITUTIONAL COUNCIL MEMBERS

Warren E. Bartel

Charles L. Bates

Grant C. Burgon

Aileen Clyde

Bruce T. Griffin

Robert E. Halladay

David A. Jacobsen

Wm. Rolfe Kerr

Robert D. McDougall

Raymond J. Noorda

Margaret L. Nelson

Howard Pace

Philip Perlman

Howard J. Ruff

Eris Y. Sumner

Boyd C. Sunderland

Jon Startup

Deryn Young

Provo, Utah

Springville, Utah

Orem, Utah

Springville, Utah

Ogden, Utah

Murray, Utah

Provo, Utah

Provo, Utah

Provo, Utah

Provo, Utah

Salt Lake City, Utah

American Fork, Utah

Salt Lake City, Utah

Springville, Utah

Orem, Utah

Chester, Utah

Provo, Utah

Orem, Utah



## CONTENTS

### FACULTY

Universities Represented by Doctorates of Contract Faculty and Administrators, 1989-90.....	29
Ethnic Distribution of Full-Time Faculty by Degree and Gender, August 1990.....	31
Age Distribution of Full-Time Faculty by Degree and Gender, August 1990.....	32
Faculty Senate Presidents, 1976-91.....	33
Ace/Pace Presidents, 1982-91.....	33
Teacher of the Year, 1976-90.....	34
Employee of the Year, 1985-89.....	34

**UNIVERSITIES REPRESENTED BY  
DOCTORATES OF CONTRACT FACULTY & ADMINISTRATORS  
1989 - 1990**

**FACULTY**

Aslett, Richard  
Bingham, Terri C.  
Bullock, Brent  
Chappell, Dick L.  
Edwards, Clyde  
Garrett, Gordon B.  
Gomm, Annette J. (Thomason)  
Greer, Dennis P.  
Grossen, Earl L.  
Harris, James G.  
Jackson, Malan R.  
Jenkins, Robert B.  
Lehnardt, Eberhardt  
Li, Ya  
Loveridge, Robert L.  
Mecham, Harvey Dee  
Miller, Ann  
Nield, John  
Oyler, Edward Dee  
Perkins, Thomas M.

**UNIVERSITY**

Brigham Young University  
Brigham Young University  
Brigham Young University  
Columbia Pacific University  
Brigham Young University  
University of Southern California  
Oklahoma State University  
Utah State University  
University of Utah  
University of Alberta Edmonton  
Arizona State University  
Utah State University  
Rice University  
University of Utah  
New Mexico State University  
Brigham Young University  
Kent State University  
Idaho State University  
Brigham Young University  
Brigham Young University

UNIVERSITIES REPRESENTED BY  
DOCTORATES OF CONTRACT FACULTY & ADMINISTRATORS

1989 - 1990

(continued)

FACULTY

Peterson, Paul  
Plothow, Roger H.  
Rasmussen, Kirk  
Raynes, Joseph L.  
Richan, Frederic P.  
Romesburg, Kerry D.  
Shumway, Del K.  
Smith, Nancy M.  
Spafford, Ann  
Staples, Sharon L.  
Stoddard, Lucille T.  
Tayler, Paul L.  
Tueller, Aiden B.  
Warner, Douglas E.  
Wilson, Ian Kenneth  
Winter, Mark L.  
Worthington, J. Karl

UNIVERSITY

University of Missouri  
Brigham Young University  
University of Utah  
Texas A & M  
University of Northern Colorado  
Arizona State University  
Washington University, St. Louis  
Brigham Young University  
Brigham Young University  
University of Utah  
Utah State University  
University of Utah  
University of California  
Arizona State University  
University of Calgary  
University of Utah  
University of Iowa

**ETHNIC DISTRIBUTION OF FULL-TIME FACULTY  
BY DEGREE AND GENDER**

August 1990

	<u>American Indian Alask/Nat</u>	<u>Asian Pacific Islander</u>	<u>Black</u>	<u>Caucasian</u>	<u>Hispanic</u>	<u>Other</u>
<b>Doctorate</b>						
Male				17		
Female		1		3		
<b>Masters</b>						
Male		2		48		
Female				26		
<b>Bachelors</b>						
Male			1	30		
Female				14		
<b>Associate</b>						
Male				11		
Female						
<b>Total Male</b>		2	1	106		
<b>Total Female</b>		1		43		

Source: Utah Valley Community College, Personnel Office

**AGE DISTRIBUTION OF FULL-TIME FACULTY  
BY DEGREE AND GENDER  
August 1990**

	<u>26-30</u>	<u>31-35</u>	<u>36-40</u>	<u>41-45</u>	<u>46-50</u>	<u>51-55</u>	<u>56-60</u>	<u>Over 60</u>
<b>Doctorate</b>								
Male		1	3		7	5		2
Female	1				1	1		
<b>Masters</b>								
Male		3	4	8	13	14	6	1
Female	1	3	2	3	8	5	2	1
<b>Bachelors</b>								
Male	1	4	3	9	6	4	3	2
Female		2	1	3	1	2	2	2
<b>Associate</b>								
Male			1	6	1	3	1	
Female								
<b>Total</b>	<b>3</b>	<b>13</b>	<b>14</b>	<b>29</b>	<b>37</b>	<b>34</b>	<b>14</b>	<b>8</b>

## FACULTY SENATE PRESIDENTS

1976-77	Stephen M. Trane	1984-85	Kenneth M. Foster
1977-78	Stephen L. Adams	1985-86	Larry B. Marsing
1978-79	Douglas E. Warner	1986-87	F. Dennis Farnsworth
1979-80	Russell C. Black	1987-88	Barbra Ann Hoge
1980-81	Robert F. Steele	1988-89	Crrin A. Nelson
1981-82	Kenneth M. Foster	1989-90	J. D. Davidson
1982-83	J. D. Davidson	1990-91	Bonnie G. Henrie
1983-84	Wesley M. Bitters		

Source: Utah Valley Community College, Faculty Senate Minutes

## ACE/PACE PRESIDENTS

1982-83	ACE	Michael H. Johnson	1987-88	PACE	Evan A. Frampton
1983-84	ACE	Barbara Dabbling	1988-89	PACE	Thomas R. Rasmussen
1984-85	ACE	Duarie Jacobs	1989-90	PACE	Noel C. Lyman
1985-86	ACE	Lucile M. Steele	1990-91	PACE	Michael V. Jacobsen
1986-87	ACE	Linda L. Makin			

Source: Utah Valley Community College, Office of Institutional Research and Strategic Planning

## TEACHER OF THE YEAR

1976-77	Elma Mack	1983-84	Rulon J. Wells
1977-78	J. D. Davidson	1984-85	Douglas L. Jorgensen
1978-79	Rex Losee	1985-86	Wesley M. Bitters
1979-80	Robert F. Steele	1986-87	Kim I. Brewster
1980-81	Stephen M. Trane	1987-88	Elma Mack
1982-83	James E. Barnes	1988-89	David O. Litchford
		1989-90	Barbra Ann Hoge

Source: Utah Valley Community College, Office of Institutional Research and Strategic Planning

## EMPLOYEE OF THE YEAR

1985-86	Helen Kennington	1987-88	James L. Michaelis
1986-87	Linda L. Makin	1988-89	Craig Gappmayer

Source: Utah Valley Community College, Office of Institutional Research and Strategic Planning

## CONTENTS

### ENROLLMENT

Headcount Enrollment, Fall Semester 1990.....	35
Full-Time Equivalent Enrollment, Fall Semester 1990.....	36
Geographic Origin of Students, United States, Fall Semester 1990 (map).....	37
Citizenship of Foreign Students, Fall Semester 1990.....	38
Average Credit Hours Per Student, Fall Semester 1990 (bar graph).....	39
Enrollment History, Fall Quarters 1980-1990 (bar graph).....	40
Resident/Non-Resident Headcount, Fall Quarters 1984-1990.....	41
Resident/Non-Resident Headcount, Fall Quarters 1983-1990 (bar graph).....	42
Part-Time/Full-Time Headcount, Fall Quarters 1984-1990.....	43
Part-Time/Full-Time Headcount, Fall Quarters 1983-1990 (bar graph).....	44
Headcount Distribution by Age, Fall Quarters 1984-1990.....	45
Mean Age of Students, Fall Quarters 1983-1990 (bar graph).....	46
Headcount Distribution by Ethnic Group, Fall Quarters 1984-1990.....	47
Male/Female Student Headcount, Fall Quarters 1983-1990 (bar graph).....	48
Headcount by Major Area of Study, Fall Quarters 1983-1990 (bar graph).....	49
Average Credit Hours Per Student by School, Fall Quarters 1985-1990.....	50
Average Credit Hours Per Student, Fall Quarters 1984-1990 (bar graph).....	51
Graduate Degrees & Certificates Awarded, 1988-1990 School Years.....	52
Enrollment Comparison of Utah Colleges/Universities, Fall 1990.....	53



## HEADCOUNT ENROLLMENT Fall Semester 1990

TOTAL HEADCOUNT      7886

Male	4221	54%	Freshmen	5955	76%
Female	3665	46%	Sophomores	1931	24%
Resident	7132	90%	Part-time	4079	52%
Non-resident	754	10%	Full-time	3807	48%
Vocational-Technical Majors				3373	43%
General Studies Majors				4513	57%

Average Age      24.2

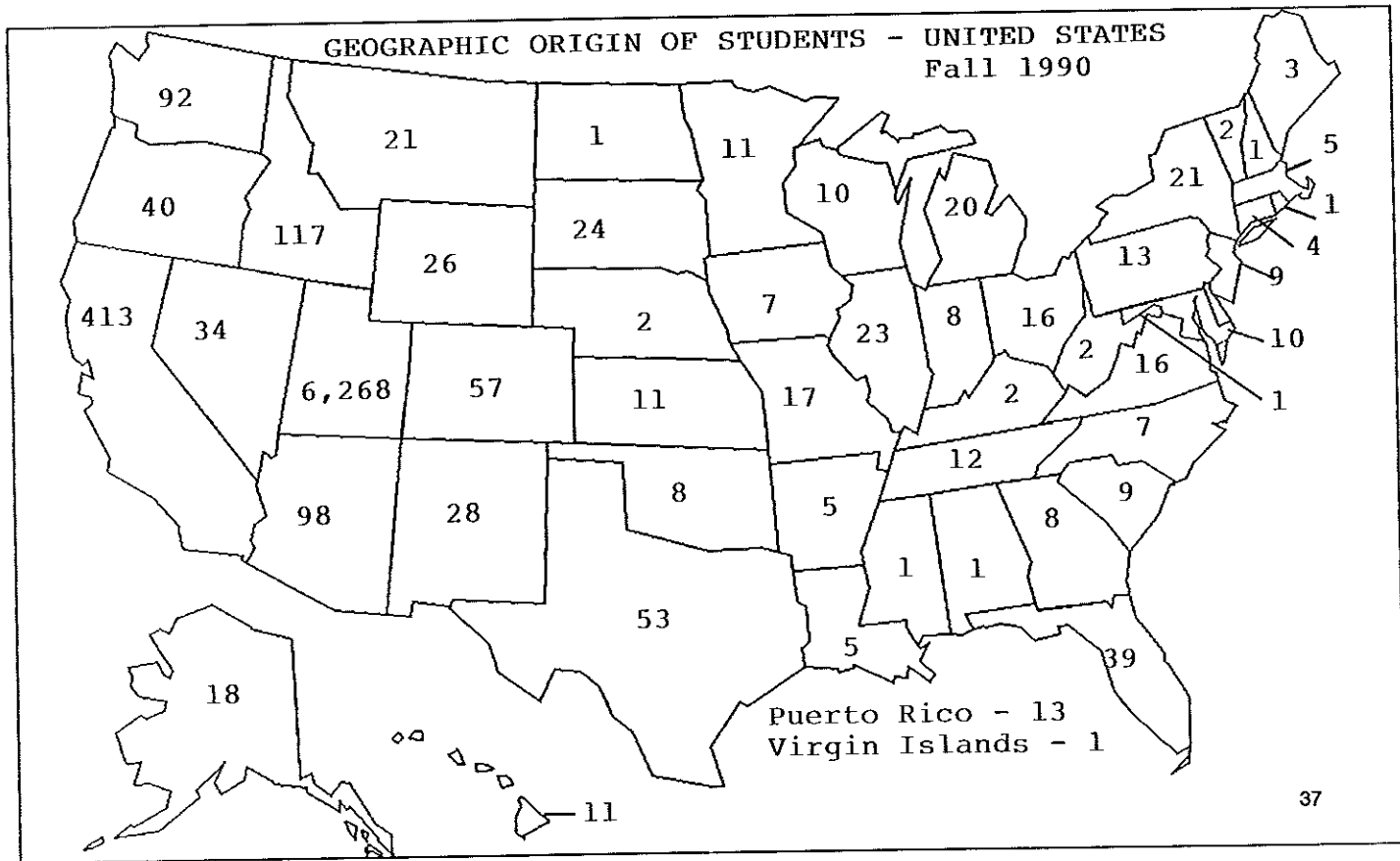
Source: Utah Valley Community College, Office of Institutional Research and Strategic Planning

## FULL-TIME EQUIVALENT ENROLLMENT Fall Semester 1990

TOTAL FULL-TIME EQUIVALENT (FTE)*	5225.1	
Vocational-Technical Majors	2215.5	42%
General Studies Majors	3010.0	58%
Residents	4644.4	89%
Non-residents	580.7	11%
Part-time	1771.7	34%
Full-time	3453.4	66%

\*Full-time equivalent is the total number of credit hours in which students are enrolled divided by 15 (the credit hour load of a hypothetical "full-time" student).

GEOGRAPHIC ORIGIN OF STUDENTS - UNITED STATES  
Fall 1990



## CITIZENSHIP OF FOREIGN STUDENTS

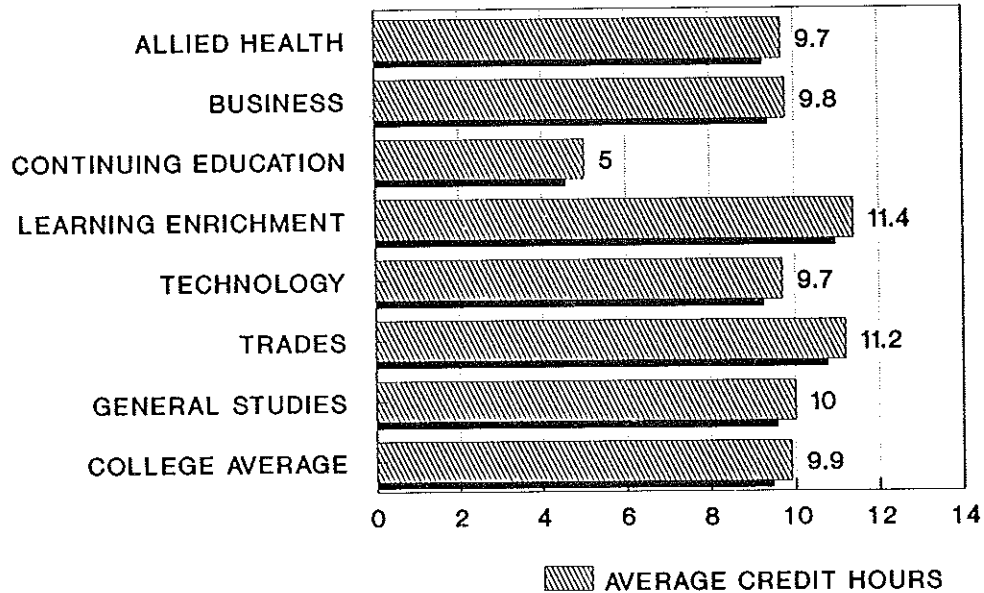
Fall 1990

Argentina	4	Australia	3
Austria	1	Belguim	1
Bolivia	3	Brazil	6
Canada	41	Chile	4
Cameroon	1	Colombia	2
Denmark	2	Ecuador	7
El Salvador	1	England	3
France	1	Germany	5
Greece	2	Grenada	1
Guatemala	1	Haiti	1
Honduras	5	Hong Kong	6
India	1	Indonesia	2
Iran	1	Italy	4
Jamaica	1	Japan	51
Korea	2	Kuwait	1
Malaysia	2	Mauritius	1
Mexico	13	Morocco	1
New Zealand	1	Nigeria	2
Panama	1	Peru	7
Philippines	1	Portugal	2
Scotland	1	Singapore	1
South Africa	1	Spain	3
Sudan	1	Sweden	2
Switzerland	2	Thailand	14
Taiwan	14	Togo	1
Tonga	1	Uganda	2
Venezuela	6	Vietnam	1
West Indies	4	Zaire	1

Source: Utah Valley Community College, Office of Institutional Research and Strategic Planning

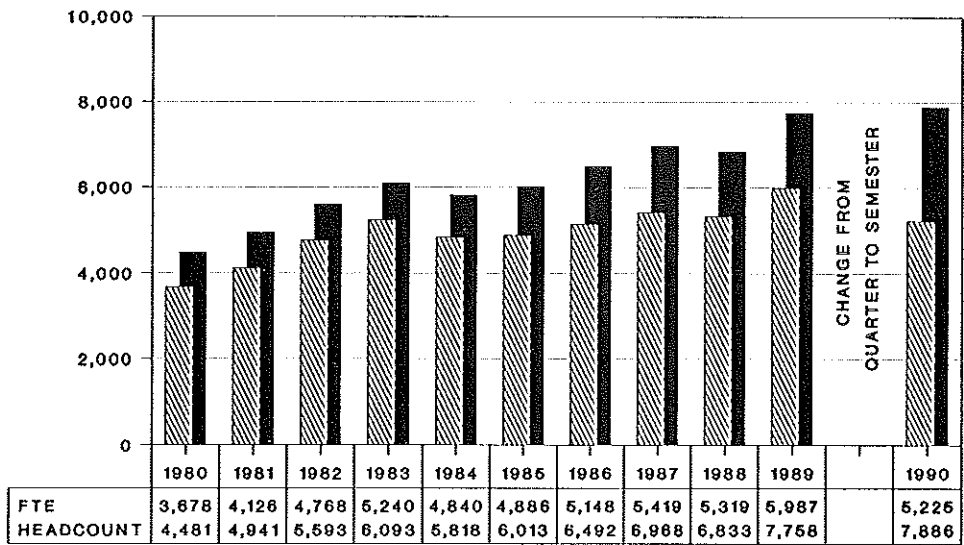
# AVERAGE CREDIT HOURS PER STUDENT

Fall Semester 1990



Source: Utah Valley Community College, Office of Institutional Research and Strategic Planning

## ENROLLMENT HISTORY FALL QUARTERS 1980 - 1990\*



\*Fall 1990 Semester

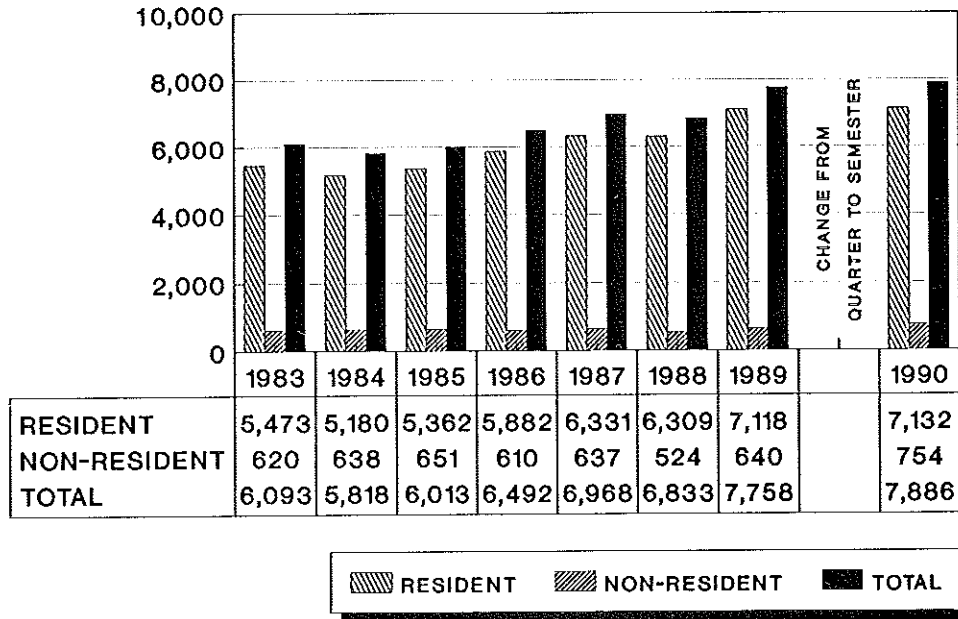


## RESIDENT/NON-RESIDENT HEADCOUNT - FALL QUARTERS 1984-1990\*

	<u>1984</u>	<u>1985</u>	<u>1986</u>	<u>1987</u>	<u>1988</u>	<u>1989</u>	<u>1990*</u>
<b>TOTAL</b>	<b>5,818</b>	<b>6,013</b>	<b>6,492</b>	<b>6,968</b>	<b>6,833</b>	<b>7758</b>	<b>7886</b>
<b>Resident</b>	<b>5,180</b>	<b>5,362</b>	<b>5,882</b>	<b>6,331</b>	<b>6,309</b>	<b>7118</b>	<b>7132</b>
%	89	89	91	91	92	92	90
Utah County	4,204	4,405	NA	5,325	4,790	5245	5142
%	72	73		76	70	68	65
Salt Lake County	234	227	NA	255	274	292	286
%	4	4		4	4	4	4
Wasatch County	100	85	NA	90	96	116	90
%	2	1		1	1	1	1
Other Counties	642	645	NA	661	1,149	1465	1614
%	11	11		9	17	19	20
<b>Non-resident</b>	<b>638</b>	<b>651</b>	<b>610</b>	<b>637</b>	<b>524</b>	<b>640</b>	<b>754</b>
%	11	11	9	9	8	8	10
Other States	476	489	NA	506	433	460	548
%	8	8		7	6	6	7
Foreign	162	162	162	131	91	180	206
%	3	3	3	2	1	2	3

Source: Utah Valley Community College, Office of Institutional Research and Strategic Planning

### RESIDENT/NON-RESIDENT STUDENT HEADCOUNT FALL QUARTERS 1983 - 1990\*



Source: Utah Valley Community College, Office of Institutional Research and Strategic Planning

\*Fall 1990 Semester



## PART-TIME/FULL-TIME HEADCOUNT - FALL QUARTERS 1984-1990\*

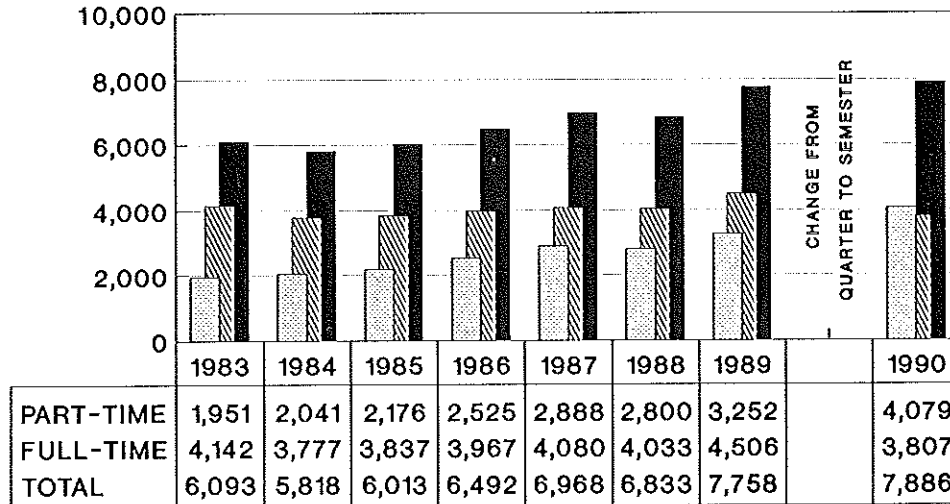
	<u>1984</u>	<u>1985</u>	<u>1986</u>	<u>1987</u>	<u>1988</u>	<u>1989</u>	<u>1990*</u>
TOTAL	5,818	6,013	6,492	6,968	6,833	7,758	7886
Part-time	2,041	2,176	2,525	2,888	2,800	3,252	4079
< 7 hours	1,192	1,065	1,144	1,387	1,337	1,473	2209
7 - 11 hours	849	1,111	1,381	1,501	1,463	1,779	1870
Full-time	3,777	3,837	3,967	4,080	4,033	4,506	3807
12 hours	361	511	545	556	604	695	1525
13 hours	468	600	771	682	661	787	851
14 hours	354	468	473	423	442	543	468
15 hours	765	754	812	1,163	1,194	1,350	422
16 hours	365	378	366	372	320	382	271
17 hours	453	303	237	211	237	160	110
18 hours	431	321	341	268	246	247	74
19 hours	211	151	135	162	86	103	34
20 hours	202	183	146	135	141	120	19
> 20 hours	167	168	141	108	102	119	33

Source: Utah Valley Community College, Office of Institutional Research and Strategic Planning

## PART-TIME/FULL-TIME STUDENT HEADCOUNT

### FALL QUARTERS 1983 - 1990\*

\*FULL-TIME STUDENT IS 12 OR MORE CREDITS



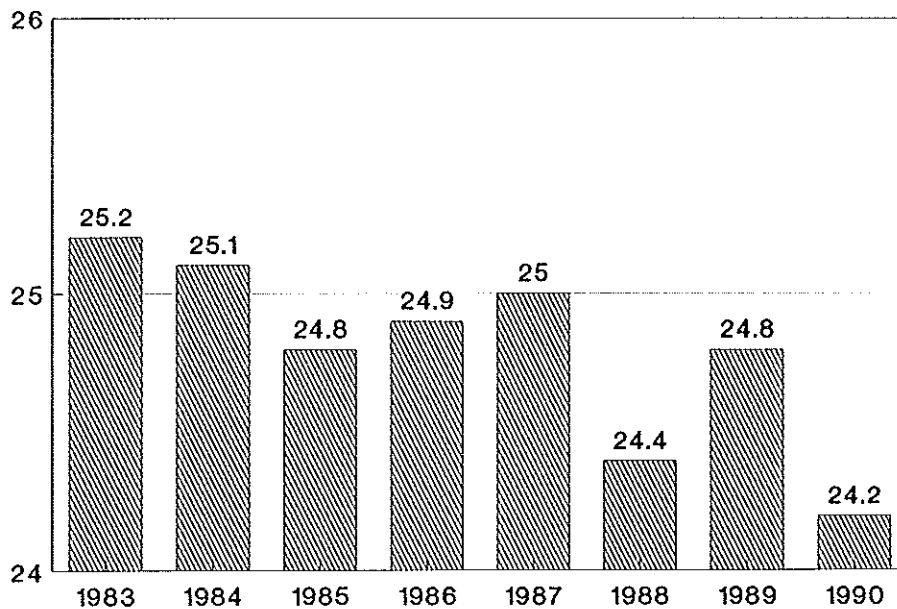
PART-TIME    
  FULL-TIME    
  TOTAL

## HEADCOUNT DISTRIBUTION BY AGE - FALL QUARTERS 1984-1990\*

	<u>1984</u>	<u>1985</u>	<u>1986</u>	<u>1987</u>	<u>1988</u>	<u>1989</u>	<u>1990*</u>
TOTAL	5,818	6,013	6,492	6,968	6,833	7758	7886
Under 19 years	694	751	855	969	1,032	1,244	1288
19-20 years	1,062	1,116	1,214	1,362	1,405	1,643	1684
21-22 years	1,053	1,071	1,126	1,215	1,273	1,405	1401
23-24 years	826	862	846	884	871	1,023	1053
25-29 years	1,019	1,061	1,129	1,107	1,009	1,156	1120
30-34 years	510	527	587	584	535	526	556
35-39 years	291	290	331	353	297	351	366
Over 39 years	363	334	382	488	395	408	408
Unknown	0	1	22	6	16	2	12
Mean Age	25.1	24.8	24.9	25.0	24.4	24.8	24.2

Source: Utah Valley Community College, Office of Institutional Research and Strategic Planning

## MEAN AGE OF STUDENTS FALL QUARTERS 1983 - 1990\*



Source: Utah Valley Community College, Office of Institutional Research and Strategic Planning

\*Fall 1990 Semester

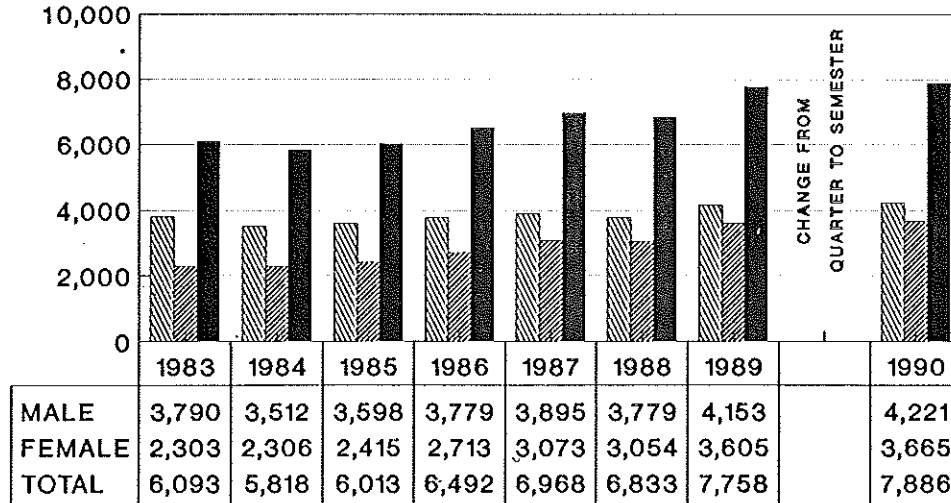
## HEADCOUNT DISTRIBUTION BY ETHNIC GROUP

### Fall Quarters 1984 - 1990\*

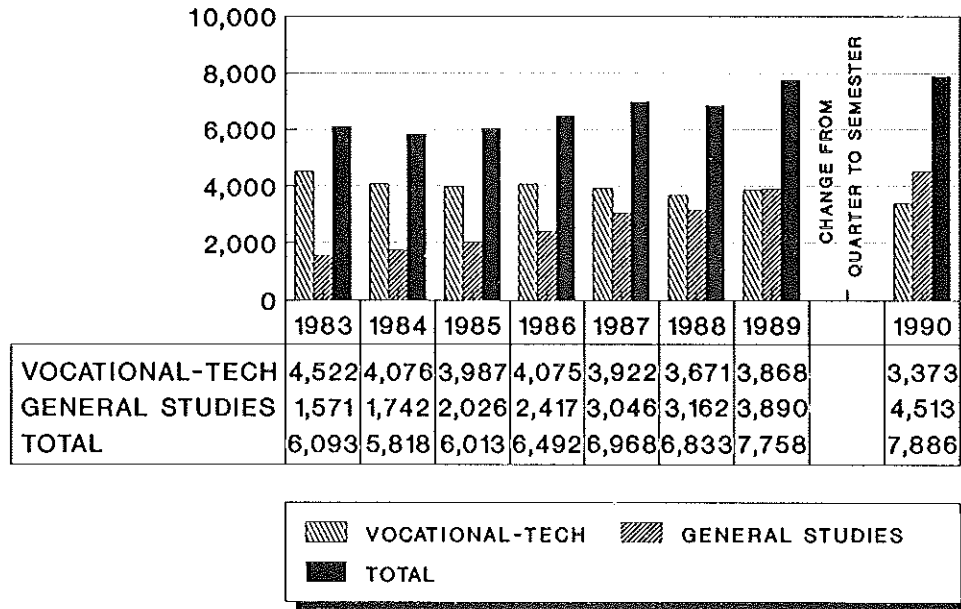
	<u>1984</u>	<u>1985</u>	<u>1986</u>	<u>1987</u>	<u>1988</u>	<u>1989</u>	<u>*Fall 1990 Semester</u> <u>1990*</u>
Total	5818	6013	6492	6968	6833	7758	7886
White	5327	5511	5934	6452	6341	7205	7280
Hispanic	117	139	138	142	122	169	186
Asian-Islander	121	107	118	110	90	92	104
American Indian	93	102	103	111	112	97	91
Black	12	5	5	6	9	15	19
Non-Resident Alien	148	149	194	147	159	180	206

Source: Utah Valley Community College, Office of Institutional Research and Strategic Planning

## MALE/FEMALE STUDENT HEADCOUNT FALL QUARTERS 1983 - 1990\*



## HEADCOUNT BY MAJOR AREA OF STUDY FALL QUARTERS 1983 - 1990\*



Source: Utah Valley Community College, Office of Institutional Research and Strategic Planning \*Fall 1990 Semester

## AVERAGE CREDIT HOURS PER STUDENT BY SCHOOL

### Fall Quarters 1985 - 1990\*

<u>SCHOOL OF</u>	<u>1985</u>	<u>1986</u>	<u>1987</u>	<u>1988</u>	<u>1989</u>	<u>1990*</u>
Allied Health	13.4	12.9	12.6	12.9	11.9	9.7
Business	11.6	11.4	11.2	11.2	11.3	9.8
Continuing Education	6.3	6.8	6.2	6.6	7.0	5.0
General Studies	1.5	11.5	11.3	11.8	11.5	10.0
Learning Enrichment	3.0	12.5	12.0	11.5	11.8	11.4
Technology	14.5	13.7	13.7	11.4	11.5	9.7
Trades	15.2	13.3	13.2	13.6	13.4	11.2
College Average	12.2	11.9	11.7	11.7	11.6	9.9

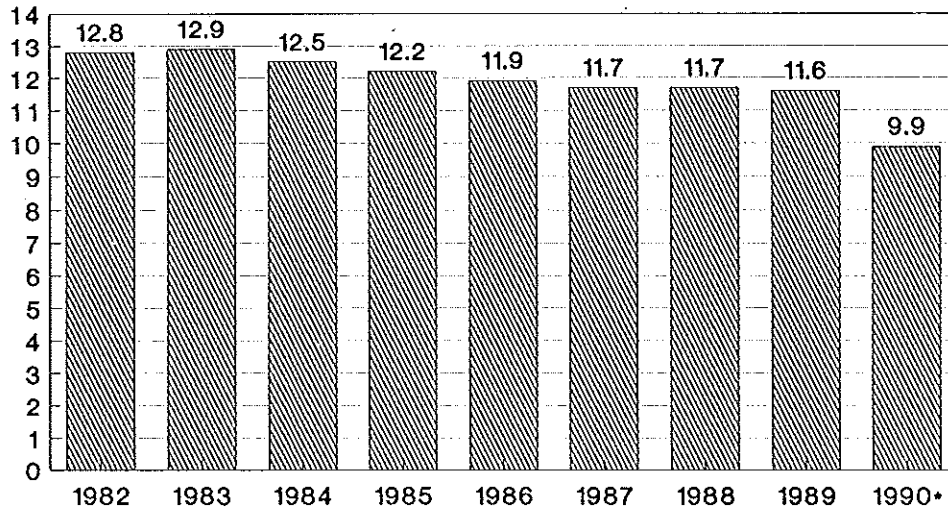
\*Fall 1990 Semester

Source: Utah Valley Community College, Office of Institutional Research and Strategic Planning



## AVERAGE CREDIT HOURS PER STUDENT

Fall Quarters 1982 - 1990\*



\*Fall 1990 Semester

 CREDIT HOURS

## GRADUATE DEGREES & CERTIFICATES AWARDED 1988-1989 and 1989-1990 School Years

	<u>1988-89</u>	<u>1989-90</u>
Associate of Science	277	317
Associate of Science in Nursing		25
Associate of Arts	9	14
Associate in Applied Science	271	300
Diploma	97	74
One-Year Certificate	180	169
Two-Year Certificate	1	3
Two-Quarter Certificate	11	1
<b>TOTAL</b>	<b>846</b>	<b>903</b>

## ENROLLMENT COMPARISON OF UTAH UNIVERSITIES AND COLLEGES

FALL 1990

<u>University/College</u>	<u>Headcount</u>	<u>FTE</u>
University of Utah	25,425	19,912
Utah State University	15,572	11,513
Weber State University	14,113	10,053
Southern Utah University	3,474	3,157
Salt Lake Community College	13,344	7,918
Utah Valley Community College*	7,886	5,225
Dixie College	2,528	2,158
College of Eastern Utah	2,960	1,800
Snow College	1,872	1,798

\*Utah Valley Community College changed to Semesters, Fall 1990.

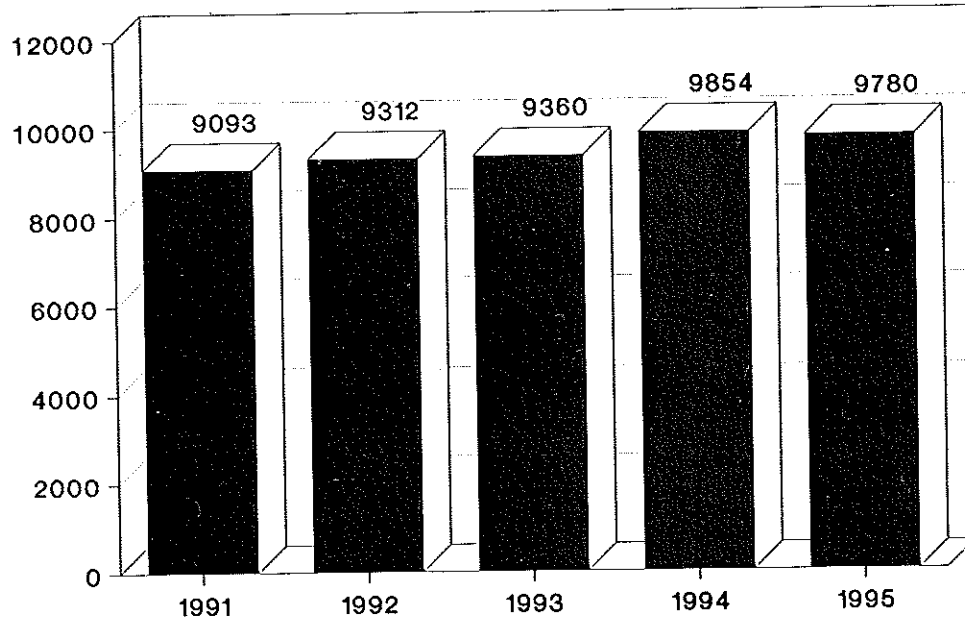
Source: Utah Valley Community College, Office of Institutional Research and Strategic Planning

CONTENTS

ENROLLMENT PROJECTIONS

Fall Headcount Projections, 1991-1995..... 54

## FALL HEADCOUNT PROJECTIONS 1991-1995



Source: Utah Valley Community College, Office of Institutional Research and Strategic Planning

## CONTENTS

### STUDENT PROFILE

Non-Returning Student Survey.....	55
Why Did You Decide Not To Continue Your Studies?.....	56
What Was Your Primary Educational Objective When You First Enrolled?.....	57
What Did You Change Your Objective To?.....	58
Have You Acheived Your Ultimate Educational Objective?.....	59
Do You Feel Your Experiences At UVCC Have Improved The Quality of Your Life?.....	60
Would You Recommend Attending UVCC to Your Friends and Acquaintances?.....	61
Do You Plan To Enroll In College Again?.....	62
Where Do You Plan To Enroll?.....	63
Which Of The Following Best Describes Your Current Employment Situation?.....	64
What Is Your Marital Status?.....	65
Which Of The Following Best Describes Your Annual Family Income?.....	66
Entering and Continuing Student Survey.....	67
Reasons For Attending UVCC.....	68
Was This Your First Choice College.....	69
What Type Of College Was Your First Choice.....	70
Learned About The College From.....	71
Plan To Enroll At This College Next Term.....	72
Preferred Class Time.....	73
Employment During First Term In College.....	74
Are You A Financial Aid Applicant.....	75
Present Academic Goals.....	76
Future Academic Goals.....	77
Current Degree Plans.....	78

## NON-RETURNING STUDENT SURVEY

While enrollment at Utah Valley Community College continues to increase each quarter (up 11.3 percent during Fall, 1989), a significant number of students enroll for one term and do not return the following quarter. This pattern is particularly acute from Fall to Winter Quarters.

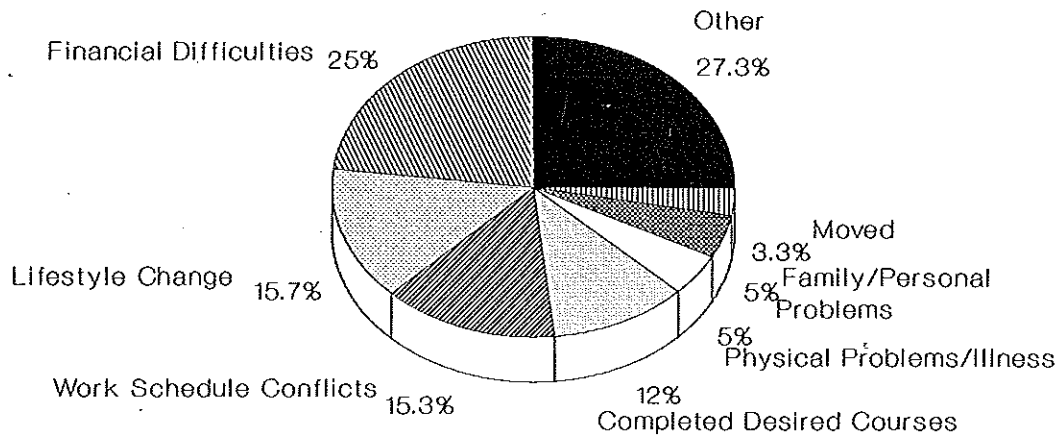
In order to better understand the reasons why students do not return, a Non-Returning Student Telephone Survey was conducted during Winter Quarter 1990. The survey instrument was developed by the Office of Institutional Research and Strategic Planning and consisted of 18 questions. The telephone survey was conducted by Western Watts, Marketing Researchers.

The population represented 1206 students who were enrolled for more than 9 credits and did not graduate during the Fall 1989 Quarter and who did not re-enroll for Winter Quarter. Three hundred students or 24.9 percent of the population were sampled.

An analysis of the data reveals some interesting facts about non-returning students at Utah Valley Community College. Some of the more pertinent results are described graphically on the following pages.

# WHY DID YOU DECIDE NOT TO CONTINUE YOUR STUDIES AT UVCC?

## Non-returning Student Profile

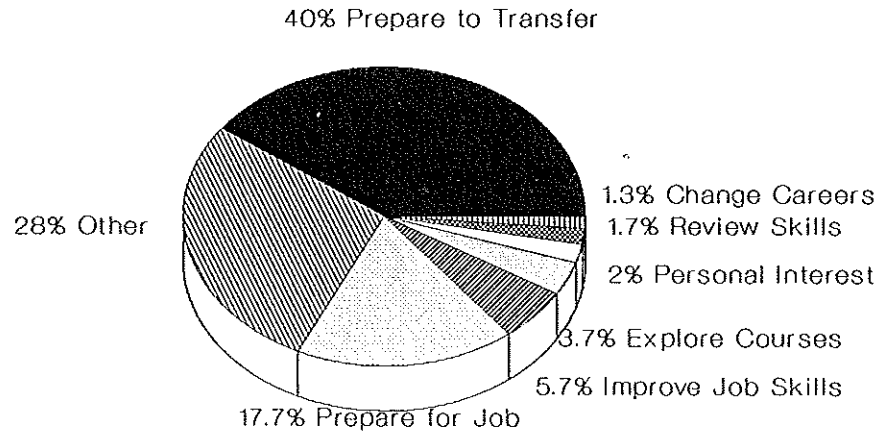


Fall to Winter 1989-90



# WHAT WAS YOUR PRIMARY EDUCATIONAL OBJECTIVE WHEN YOU FIRST ENROLLED?

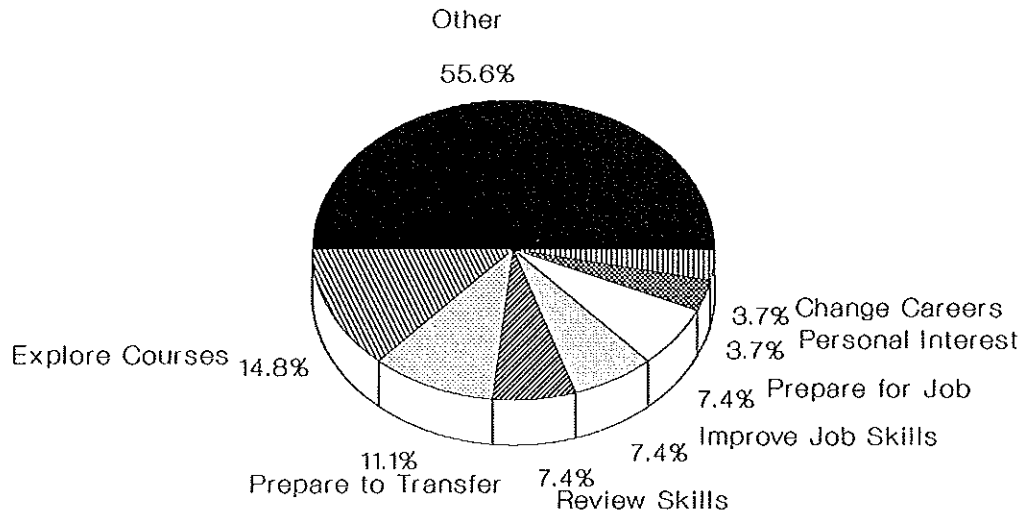
Non-returning Student Profile



Fall to Winter 1989-90

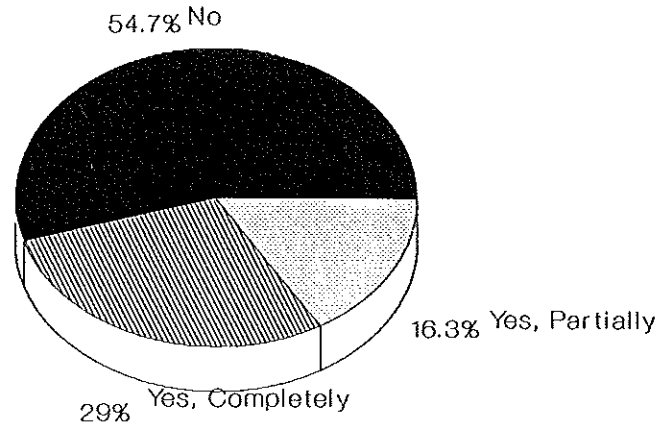
# IF YOU CHANGED YOUR OBJECTIVE, WHAT DID YOU CHANGE YOUR OBJECTIVE TO?

Non-returning Student Profile



Fall to Winter 1989-90

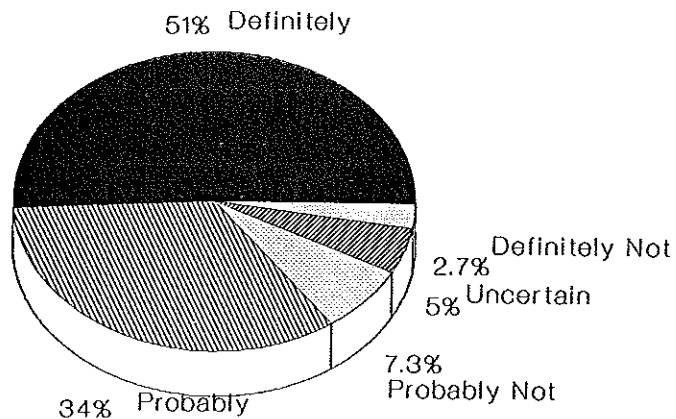
# HAVE YOU ACHIEVED YOUR ULTIMATE EDUCATIONAL OBJECTIVE AT UVCC? Non-returning Student Profile



Fall to Winter 1989-90

# DO YOU FEEL YOUR EXPERIENCES AT UVCC HAVE IMPROVED THE QUALITY OF YOUR LIFE?

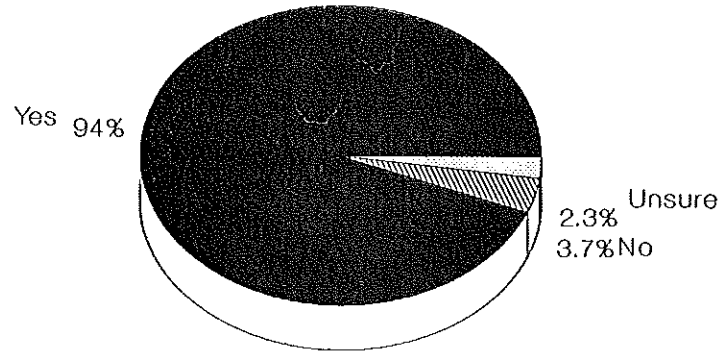
Non-returning Student Profile



Fall to Winter 1989-90

# WOULD YOU RECOMMEND ATTENDING UVCC TO YOUR FRIENDS AND ACQUAINTANCES?

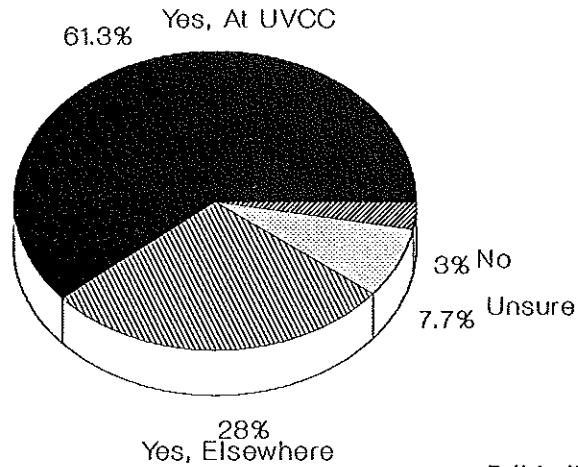
Non-returning Student Profile



Fall to Winter 1989-90

# DO YOU PLAN TO ENROLL IN COLLEGE AGAIN?

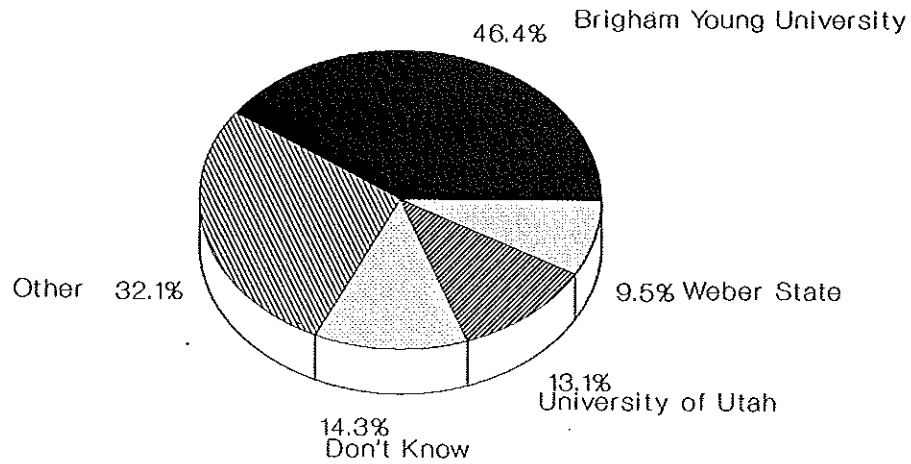
## Non-returning Student Profile



Fall to Winter 1989-90

# IF YOU PLAN TO ENROLL IN COLLEGE AGAIN ELSEWHERE, WHERE DO YOU PLAN TO ENROLL?

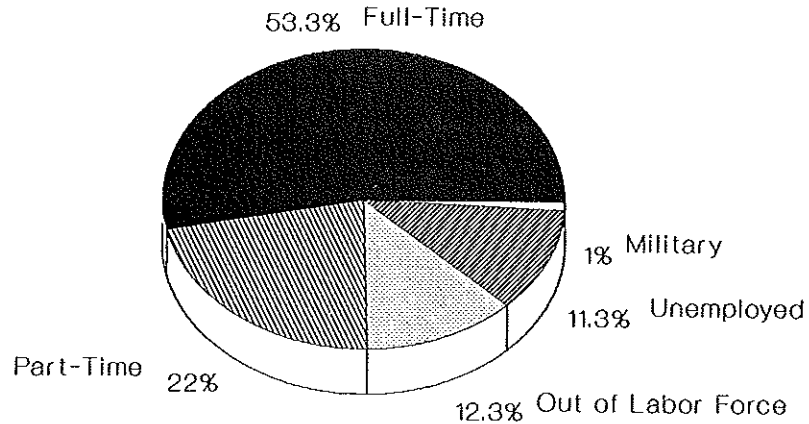
Non-returning Student Profile



Fall to Winter 1989-90

# WHICH OF THE FOLLOWING BEST DESCRIBES YOUR CURRENT EMPLOYMENT SITUATION?

Non-returning Student Profile

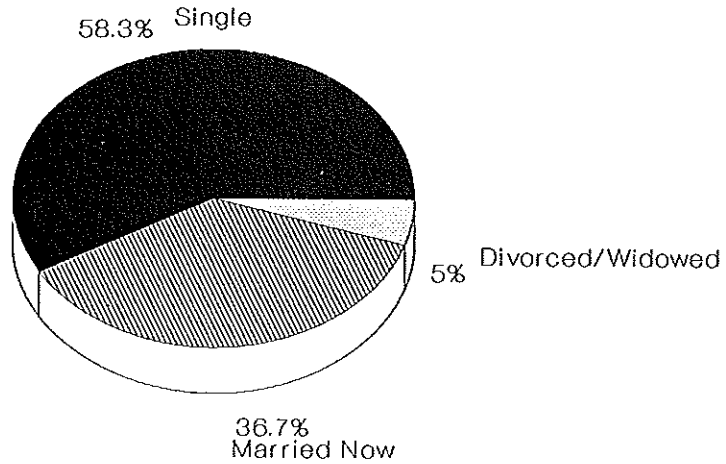


Fall to Winter 1989-90



# WHAT IS YOUR MARITAL STATUS?

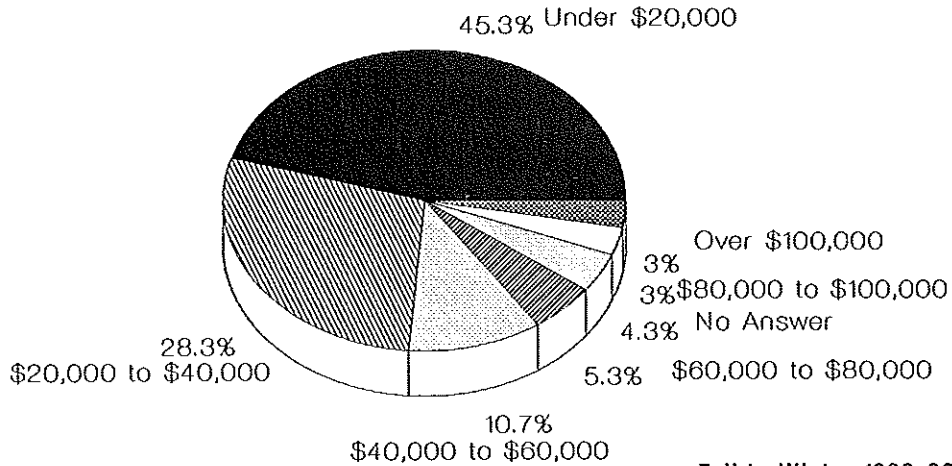
Non-returning Student Profile



Fall to Winter 1989-90

# WHICH OF THE FOLLOWING BEST DESCRIBES YOUR ANNUAL FAMILY INCOME?

Non-returning Student Profile



Fall to Winter 1989-90

## ENTERING AND CONTINUING STUDENT SURVEY

During Fall Quarter 1989 the Office of Institutional Research and Strategic Planning conducted an on-campus survey of ENTERING and CONTINUING students in an effort to compile some of the basic parameters of enrollment at Utah Valley Community College. Lucile Steele served as project director with assistance from Wendy Smith.

This project would not have been possible without the wholehearted support of the Academic Vice President, Dr. Lucille Stoddard, and participating faculty and students.

The survey instruments utilized in the study were developed by the National Center for Higher Education Management Systems and are specific to community college students. The validity and reliability of the testing instruments has been well-substantiated by NCHEMS and other participating institutions.

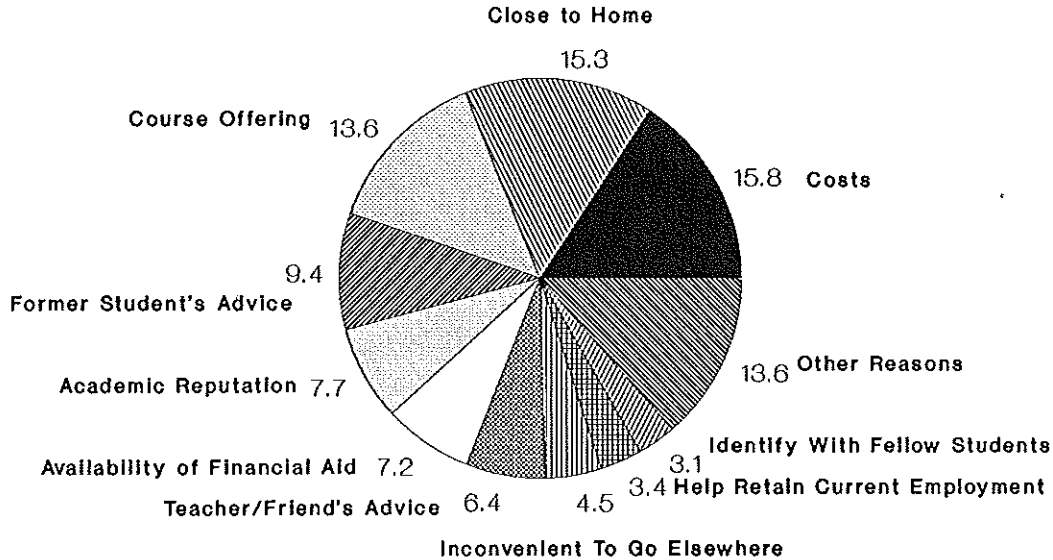
A very cautious random sample of ENTERING and CONTINUING students was taken. Variables of major, class time and location were considered in the sampling process. The total sample size was 967 or 16.1 percent of the Fall student enrollment.

The surveys were coded and analyzed by the College Board and the data have been graphically displayed by Jeannie Brown.

A more detailed statistical analysis of the findings of this study is available upon request from the Office of Institutional Research and Strategic Planning.

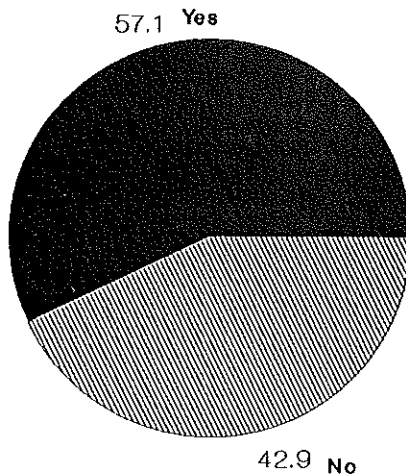
# REASONS FOR ATTENDING UVCC

## Entering Student Survey 1989



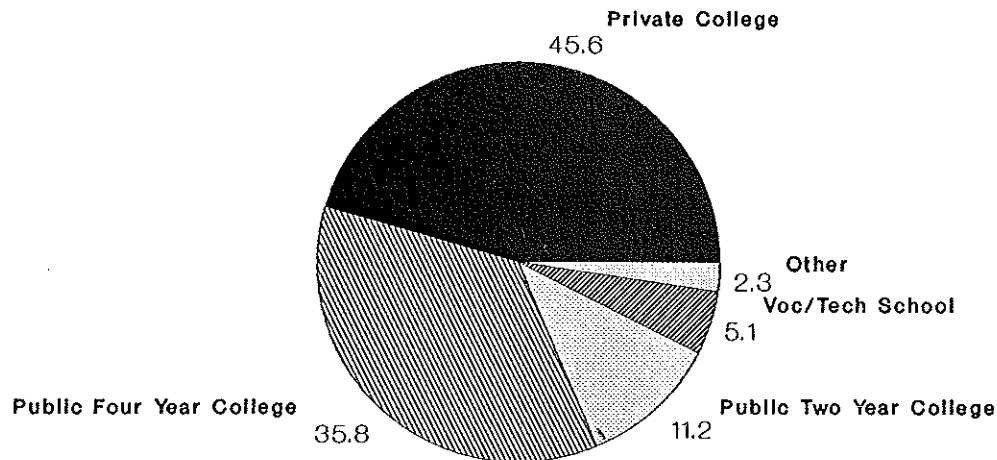
# WAS THIS YOUR FIRST CHOICE COLLEGE?

Entering Student Survey 1989

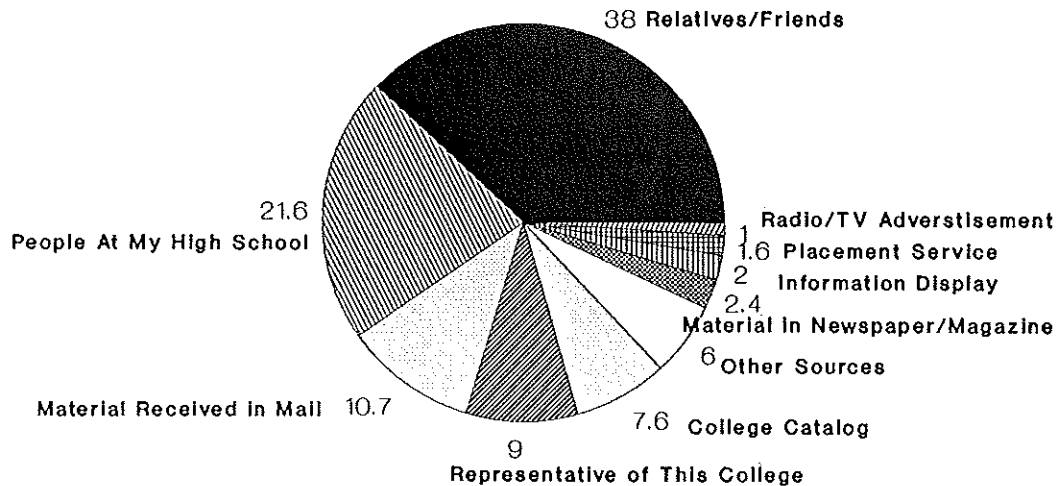


# IF THIS WAS NOT YOUR FIRST CHOICE WHAT TYPE COLLEGE WAS YOUR FIRST CHOICE?

Entering Student Survey 1989

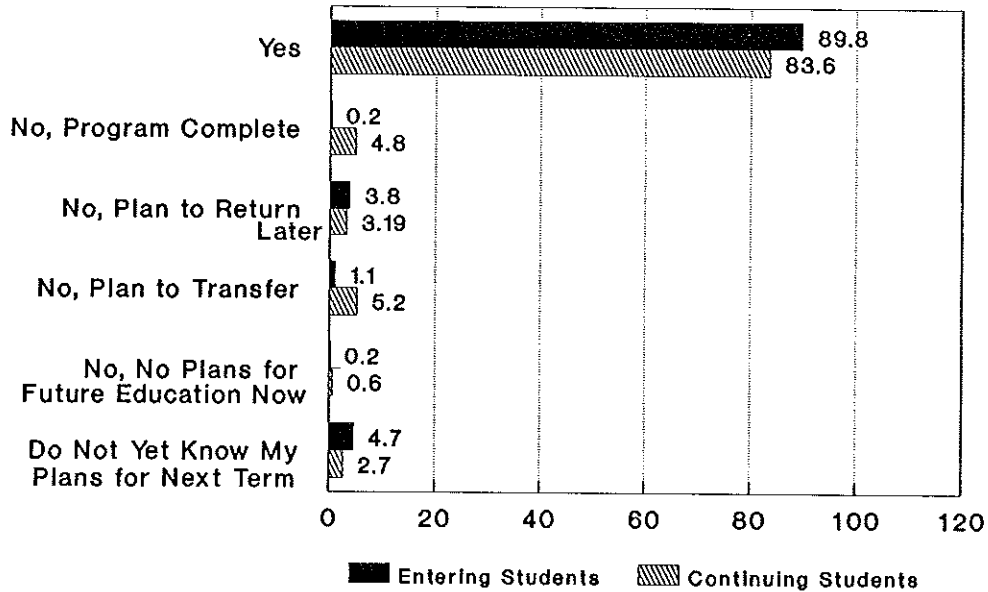


# LEARNED ABOUT THE COLLEGE FROM: Entering Student Survey 1989



# PLAN TO ENROLL AT THIS COLLEGE NEXT TERM

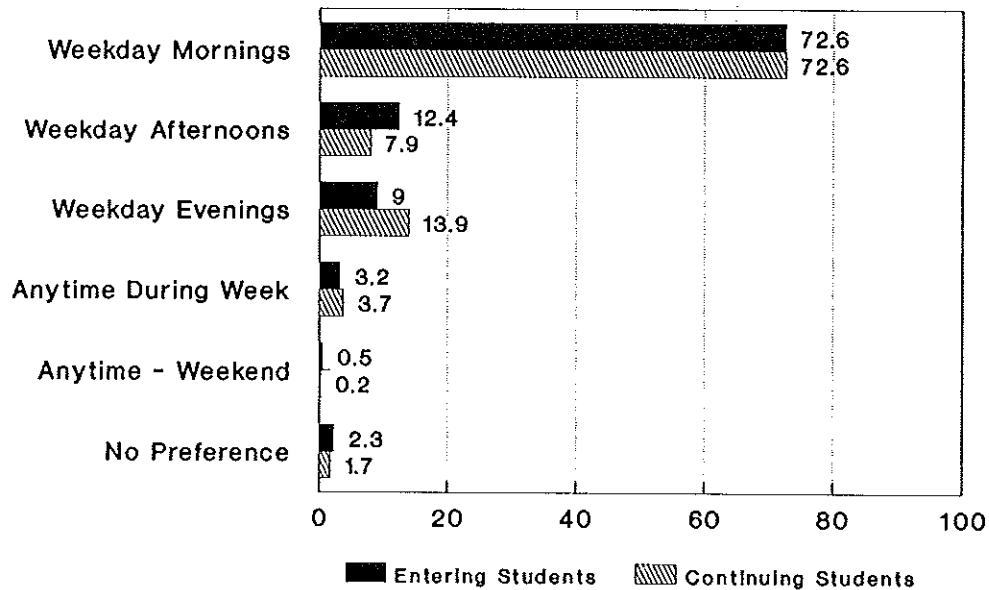
Student Survey 1989





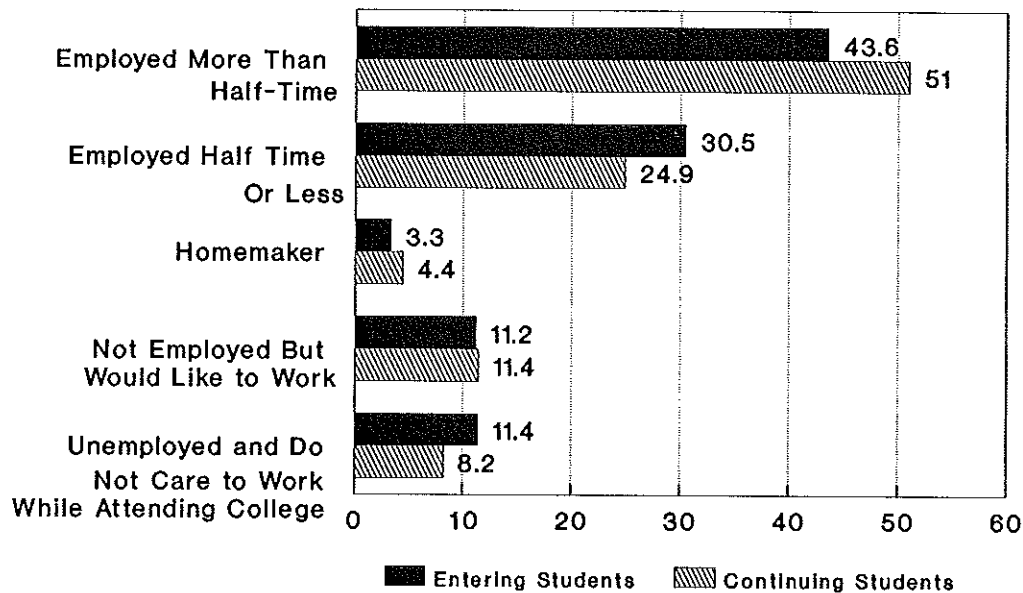
# PREFERRED CLASS TIME

Student Survey 1989



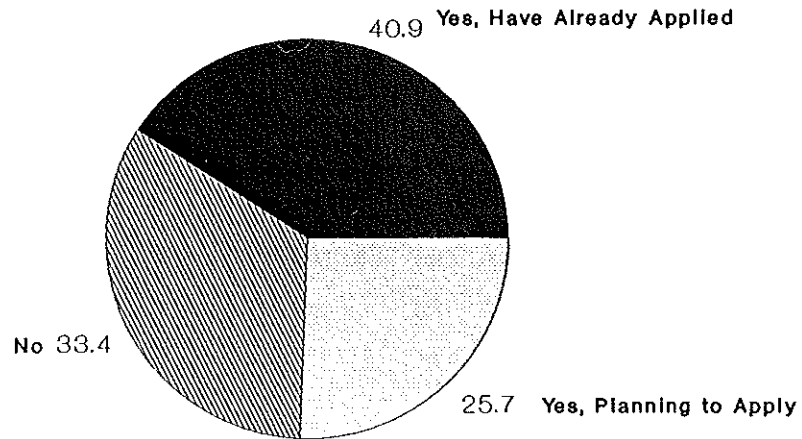
# EMPLOYMENT DURING FIRST TERM IN COLLEGE

Student Survey 1989



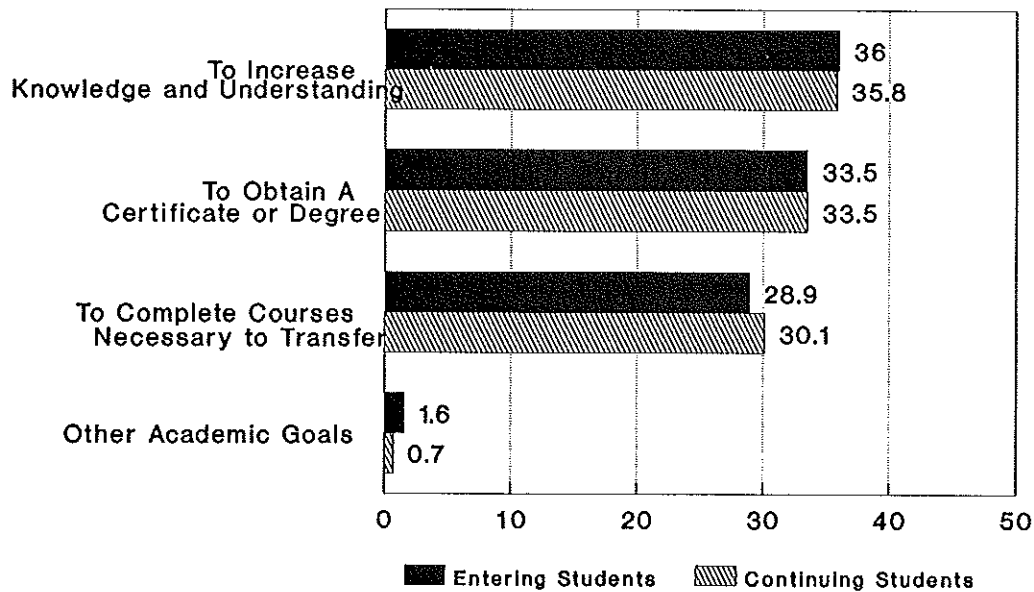
# ARE YOU A FINANCIAL AID APPLICANT?

Entering Student Survey 1989



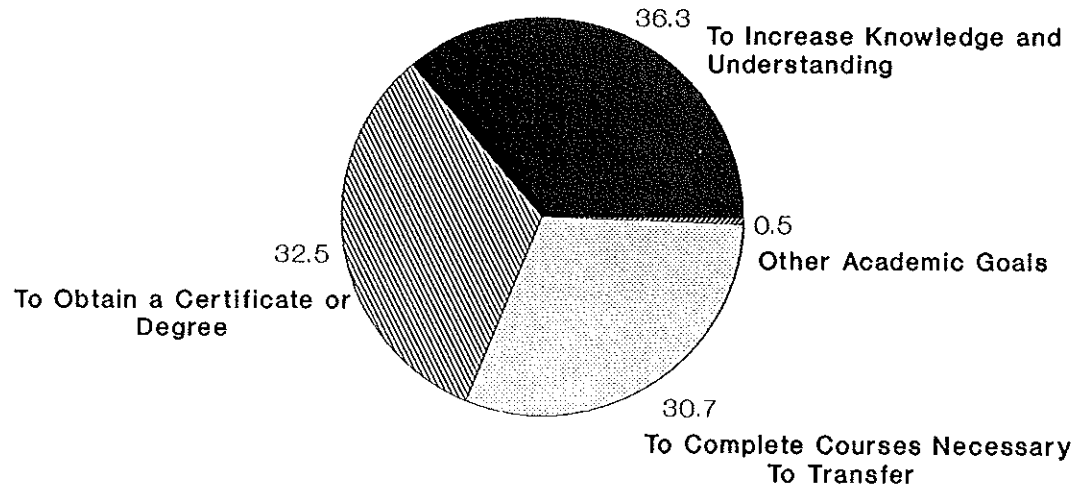
# PRESENT ACADEMIC GOALS

Student Survey 1989



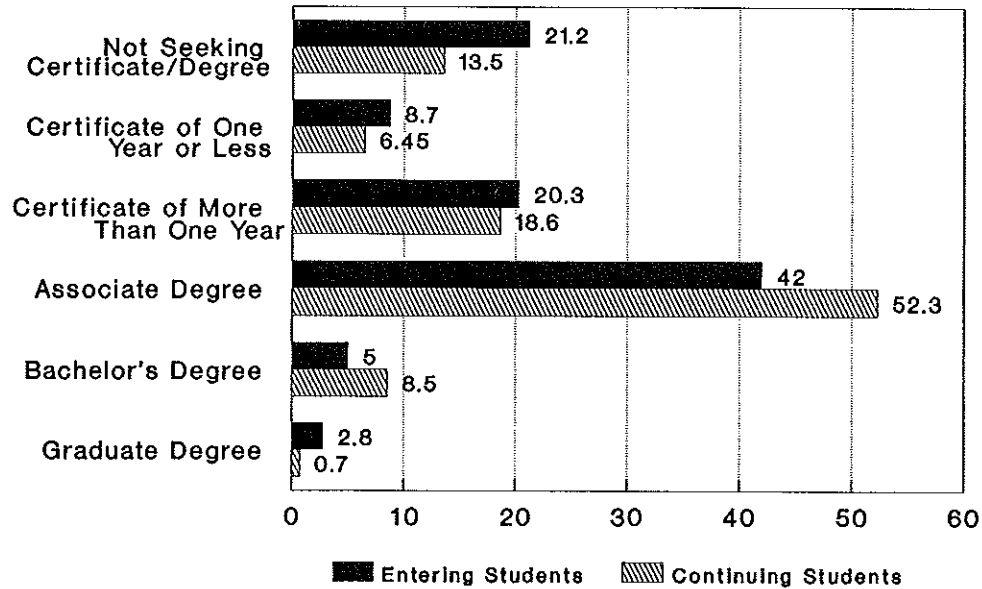
## FUTURE ACADEMIC GOALS

Continuing Student Survey 1989



# CURRENT DEGREE PLANS

Student Survey 1989

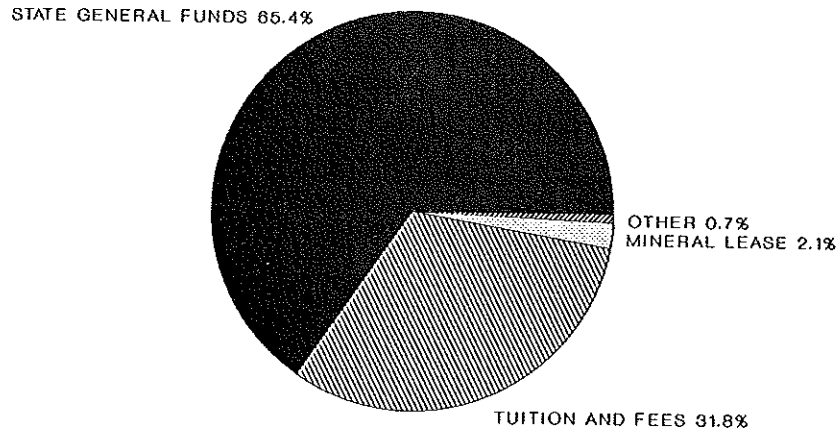


## CONTENTS

### BUDGET & FINANCE

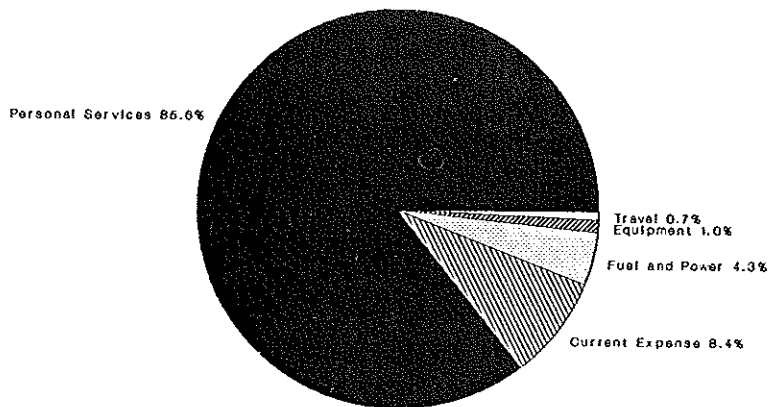
Education and General Revenue Sources, 1990-1991 (pie chart).....	79
Education and General Operating Funds Use Expenditure Category, 1990-1991 (pie chart).....	80
Ten Year History of Education and General Operating Budgets and Appropriations 1979-1991.....	81
Ten Year History-Education and General Operating Budget and Appropriation 1981-1991 (bar graph).....	82
Ten Year History of State Appropriation Per FTE, 1979-1990.....	83
Fuel and Power Expenditures, 1984-1991 (bar graph).....	84

# EDUCATION AND GENERAL REVENUE SOURCES 1990 - 1991





## EDUCATION & GENERAL OPERATING FUNDS USE EXPENDITURE CATEGORY 1990-91



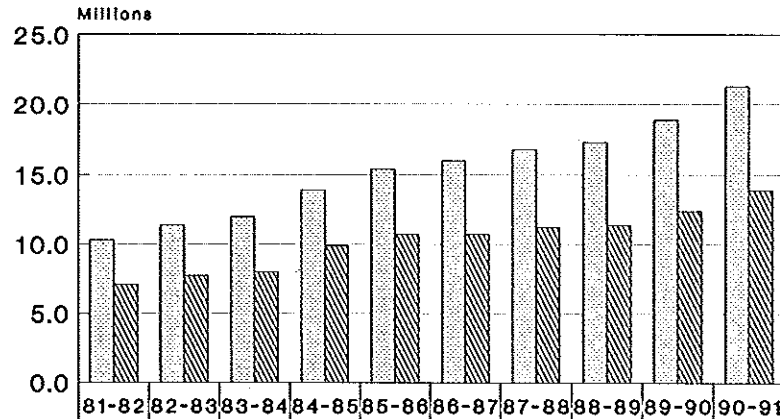
Source: Utah Valley Community College, Budget Office

## TEN YEAR HISTORY OF EDUCATION AND GENERAL OPERATING BUDGETS AND APPROPRIATIONS

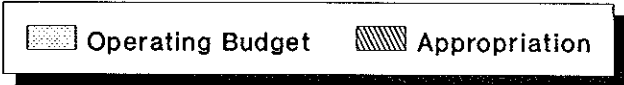
<u>Year</u>	<u>Total Budget</u>	<u>Amount Appropriated</u>	<u>Percentage</u>
1979-80	\$7,462,800	\$5,346,500	72.85%
1980-81	\$8,656,400	\$6,206,500	71.70%
1981-82	\$10,281,200	\$7,054,100	68.61%
1982-83	\$11,377,500	\$7,671,400	67.43%
1983-84	\$12,021,700	\$7,997,700	66.53%
1984-85	\$13,854,100	\$9,963,500	71.92%
1985-86	\$15,400,281	\$10,723,475	69.63%
1986-87	\$15,967,752	\$10,716,500	67.11%
1987-88	\$16,796,426	\$11,162,400	66.46%
1988-89	\$17,268,400	\$11,449,800	66.30%
1989-90	\$18,856,800	\$12,370,900	65.60%
1990-91	\$21,319,500	\$13,939,400	65.38%

Source: Utah Valley Community College, Budget Office  
Excludes supplementals and one-time reductions

## TEN YEAR HISTORY-EDUCATION AND GENERAL OPERATING BUDGET AND APPROPRIATION



	81-82	82-83	83-84	84-85	85-86	86-87	87-88	88-89	89-90	90-91
Operating Budget	10.3	11.4	12.0	13.9	15.4	16.0	16.8	17.3	18.9	21.3
Appropriation	7.1	7.7	8.0	9.9	10.7	10.7	11.2	11.4	12.4	13.9



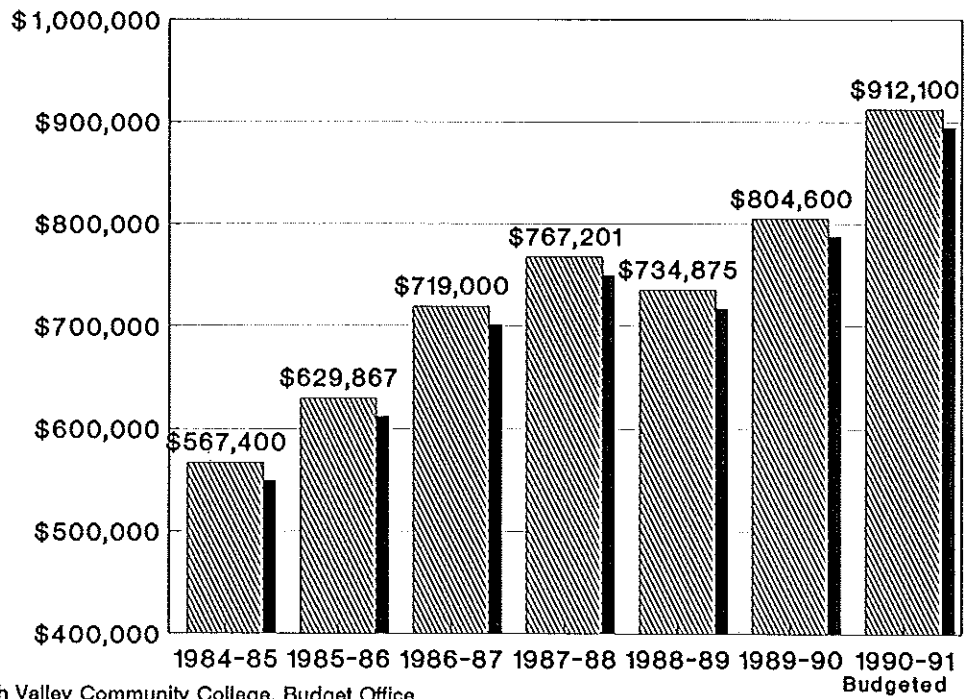
## TEN YEAR HISTORY OF STATE APPROPRIATION PER FTE\*

<u>Year</u>	<u>State Appropriation</u>	<u>Annualized FTE</u>	<u>Appropriation Per FTE</u>
1979-80	\$5,346,500	3,250	\$1,645
1980-81	\$6,206,500	3,840	\$1,616
1981-82	\$7,054,100	4,349	\$1,622
1982-83	\$7,671,400	5,035	\$1,524
1983-84	\$7,997,700	5,272	\$1,517
1984-85	\$9,963,500	4,947	\$2,014
1985-86	\$10,723,475	4,899	\$2,189
1986-87	\$10,716,500	5,206	\$2,058
1987-88	\$11,162,400	5,302	\$2,105
1988-89	\$11,449,800	5,329	\$2,149
1989-90	\$12,370,900	5,854	\$2,113

\*FTE = Full-time equivalent

Source: Utah Valley Community College, Budget Office

## FUEL AND POWER EXPENDITURES



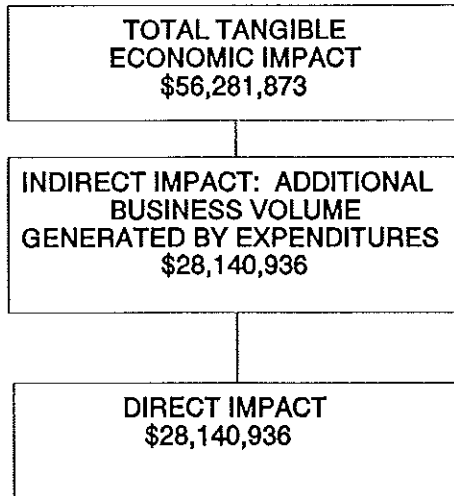
Source: Utah Valley Community College, Budget Office

CONTENTS

ECONOMIC IMPACT

Total Tangible Economic Impact..... 85

**Total Tangible Economic Impact of the Utah Valley Community College on Utah**



Source: Utah Valley Community College, Office of Institutional Research and Strategic Planning

## CONTENTS

### SUPPORT

Scholarships and Waivers Through Financial Aid Office, 1988-1990.....	86
Financial Aid Activity Report, 1989-1990.....	87
Grants and Contracts, 1987-1990.....	88
Private Funding, 1987-1990.....	90
Utah Valley Community College Foundation Board, 1989-1990.....	92
Utah Valley Community College Alumni Association Board of Directors, 1990-1991.....	93
Utah Valley Community College Foundation Advisory Board.....	94
Advisory Committees, Accounting, Automotive Technology, Air Conditioning and Refrigeration Technology Building Construction & Construction Management, Business Management.....	95
Advisory Committees, Computer Science and Information, Cabinetry and Architectural Woodwork, Child Education & Family Studies, Collision Repair, Diesel Mechanics.....	96
Advisory Committees, Drafting Technology, Electronics & Computer Technology, Electrical Automation....	97
Advisory Committees, Fashion Merchandising, Fire Science, Finance & Banking, Environmental.....	98
Advisory Committees, Graphics/Commercial Art, Hospitality Management, Human Services, Learning Enrichment, Legal Assistant, International Business.....	99
Advisory Committees, Machine Tool Technology, Lineman Technology, Minority, Nursing.....	100
Advisory Committees, Office Technology Administration, Physical Plant Management, Professional Driving	101
Advisory Committees, Public Relations, Welding Technology.....	102
Clubs and Organizations, Cheerleaders, CCDC, Country Wester, DPMA.....	103
Clubs and Organizations, DEX, Drafting Club, German Club, Ham Radio.....	104
Clubs and Organizations, International Knights, Karate, Lambda Delta Sigma, Spanish.....	105
Clubs and Organizations, LDSSA, Law Society, PCDC, PBL.....	106
Clubs and Organizations, Rodeo Club, Sigma Gamma Chi, Ski Team, VICA, Russian.....	107
Library Patrons, Academic Years 1983-1984 through 1990-1990.....	108



## SCHOLARSHIPS AND WAIVERS THROUGH FINANCIAL AID OFFICE

<u>Name</u>	1988-1989		1989-1990	
	<u>Number</u>	<u>Amount</u>	<u>Number</u>	<u>Amount</u>
Athletic Non-Resident Waiver	3	\$8,396	8	\$10,629
Athletic Scholarship	44	\$8,422	49	\$9,499
Athletic Waivers	60	\$34,852	56	\$35,498
Auto Body Scholarships			1	\$407
Continuing Student Waivers	154	\$73,806	112	\$81,997
Crouch Auto Mechanic Scholarships	2	\$6,000	1	\$1,206
Department Discretionary Waiver	70	\$19,526	72	\$26,263
First-time Student Waivers	145	\$91,210	102	\$81,400
Geneva Steel Scholarship			3	\$1,500
Governor's Craftsmen Waivers	18	\$10,565	18	\$13,116
Gunther Scholarship	1	\$693	3	\$2,998
Institutional Discretionary Scholarship	5	\$2,110	3	\$659
LPN Scholarship	4	\$1,316	8	\$3,500
Miscellaneous Scholarship	4	\$2,150	9	\$2,967
Non-Resident Miscellaneous Waiver	1	\$100	1	\$346
PG Health Scholarship	2	\$938	2	\$1,225
Pearson Trust Scholarship	26	\$8,438	23	\$8,200
Resident Miscellaneous Waivers	5	\$2,619	13	\$7,365
Rodeo			10	\$3,172
Special Attainment Waivers			18	\$12,660
Student Waivers	32	\$16,643	36	\$18,198
Studentbody Scholarship	5	\$1,381		
Utah Career Teaching Scholarship	7	\$8,856	8	\$6,859
<b>TOTAL</b>	<b>588</b>	<b>\$298,021</b>	<b>556</b>	<b>\$329,664</b>

Source: Utah Valley Community College, Financial Aid Office

## FINANCIAL AID ACTIVITY REPORT 1989 - 1990

	<u>NUMBER OF STUDENTS</u>	<u>AMOUNT</u>	<u>% OF TOTAL</u>
<u>GRANTS</u>			
Pell	2,574	\$3,766,752	45%
SEOG	261	167,773	2%
SSIG	200	113,085	1%
<u>LOANS</u>			
Perkins	161	267,150	3%
Stafford	1,024	3,149,101	38%
Short-Term	1,730	651,722	8%
SLS	17	60,751	.7%
PLUS	12	54,771	.7%
<u>EMPLOYMENT</u>			
College Work-Study	135	185,552	2%
 <b>TOTAL</b>	 <b>6,114</b>	 <b>\$8,416,657</b>	 <b>100%</b>

Source: Utah Valley Community College, Office of Financial Aids

## GRANTS AND CONTRACTS

	<u>1987-88</u>	<u>1988-89</u>	<u>1989-90</u>
Academic Facilities	\$ 94,920		
Administration			\$231,546
Adult A			18,480
Adult B			38,383
Adult IIB	90,000		
Business/Industry	44,960		
CETSEG/STIT		\$123,466	
Consumer/Homemaker			8,000
Continuing Education		3,000	
Co-op			9,000
Co-op Supplemental	6,076	20,000	
Co-op Title VIII Demo Grant	175,168	171,291	
Curriculum Development			6,000
Disadvantaged	206,604	196,024	100,863
Displaced Homemaker	15,642	12,703	54,652
Environmental Technology		31,000	
Equipment	123,601	19,150	
Federal Vocational Equipment			37,000
Fire Science Training	70,000	70,000	70,000
FIPSE/Accounting	25,000		
FIPSE/Electronics	84,720		
General Equity		28,000	
General Studies/Band Instruments		18,000	

## GRANTS AND CONTRACTS

(continued)

	<u>1987-88</u>	<u>1988-89</u>	<u>1989-90</u>
Guidance/Homemaker			9,355
Guidance/Placement	42,000	29,979	
Handicapped Services	\$ 17,904	\$ 14,626	\$ 15,240
Humanities	39,600	40,600	38,000
Job Training Partnership			62,353
New Programs - Ranch			56,000
Outreach		30,000	
Retraining-Underserved Areas			43,757
Sex Equity	24,000	28,000	60,070
Single Parent	60,000	57,500	62,683
STIT	32,000		
Technical/Academics	59,395		
Title III	199,624	188,021	199,225
Title III Endowment		200,000	
Vocational Assessment	2,740		
Vocational Camp		5,509	
Vocational Education		2,844	
Waste Water Training			<u>30,000</u>
<b>TOTAL</b>	<b>\$1,413,954</b>	<b>\$1,289,713</b>	<b>\$1,150,607</b>

Source: Utah Valley Community College, Development Office

## PRIVATE FUNDING\*

(Includes Foundations, Corporations and Individuals)

	<u>1987-88</u>	<u>1988-89</u>	<u>1989-90</u>
Faculty/Staff Donations	\$9,771	\$9,394	\$11,905
Institutional Excellence	\$0	\$0	\$85,100
Institutional Support:			
Art Gallery	\$0	\$100	\$0
Computer Services	\$0	\$0	\$10,000
Development	\$1,000	\$0	\$0
Library	\$8,350	\$4,311	\$51,352
Mail Services	\$0	\$0	\$500
Other	\$1,600	\$0	\$5,935
Personnel	\$400	\$0	\$0
Safety	\$0	\$1,000	\$0
Ski Team	\$0	\$4,500	\$0
Solar Car	\$0	\$500	\$0
Staff Awards	\$0	\$0	\$5,000
Scholarships:			
Business Management	\$0	\$500	\$0
Endowments	\$58,510	\$187,500	\$132,795
General	\$12,408	\$12,681	\$18,946
Unrestricted	\$15,033	\$9,677	\$7,830

\*Cash and Gift-in-kind Items

Source: Utah Valley Community College, Development Office

## PRIVATE FUNDING\*

(Includes Foundations, Corporations and Individuals)  
(continued)

Programs:	<u>1987-88</u>	<u>1988-89</u>	<u>1989-90</u>
Athletics	\$3,050	\$13,015	\$0
Auto Mechanics	\$14,600	\$6,025	\$8,925
Building Construction	\$0	\$0	\$1,159
Business Management	\$0	\$250	\$0
Career Center	\$4,000	\$200	\$500
CIS/Accounting	\$200	\$19,180	\$0
Collision Repair	\$5,013	\$0	\$1,665
Diesel Mechanics	\$0	\$14,850	\$4,000
Electronics	\$2,000	\$5,237	\$6,900
Environmental	\$0	\$0	\$5,000
General Studies	\$5,825	\$0	\$0
Graphics	\$0	\$0	\$10,000
Legal Assisting	\$9,000	\$0	\$0
Lineman Training	\$0	\$34,496	\$0
Machine Tool Technology	\$0	\$0	\$3,900
Nursing	\$0	\$0	\$3,502
Professional Driving	\$0	\$1,200	\$0
Refrigeration	\$2,500	\$0	\$0
Robotics	\$0	\$200,000	\$0
Welding	\$0	\$212	\$0
<b>TOTALS</b>	<b>\$153,260</b>	<b>\$524,828</b>	<b>\$374,914</b>

\*Cash and Gift-in-kind Items

Source: Utah Valley Community College, Development Office

## UTAH VALLEY COMMUNITY COLLEGE FOUNDATION BOARD

1989 - 1990

G. William Aaron  
Bill J. Anderson, Chairman  
Ray Bartholomew  
Joe Cannon  
Louise Clyde  
James B. Lindahl  
Renee Nelson  
Max Pinegar  
Florence Ragan  
Neal Savage, Chairman - Elect  
Paul Sybrowsky  
Maria Vargas  
Harold R. Wing

Business:

Merrill Lynch  
Business Consultant  
Squire & Company  
Geneva Steele  
Geneva Rock  
Business Consultant  
Daily Herald  
NuSkin  
Retired Business Woman  
Savage Industries  
Dynix  
Word Perfect, Hard Disk Cafe  
Wing Enterprises

Source: Utah Valley Community College, Development Office

UTAH VALLEY COMMUNITY COLLEGE  
ALUMNI ASSOCIATION BOARD OF DIRECTORS

1990 - 1991

Kelly Bitters  
Sheila Christensen  
Brent J. DeMille  
Ben K. Gould, Jr.  
David D. Halladay  
Scott P. Hancock  
Lisa Hatch  
Randy J. Kester  
George Marshall  
Greg Nelson  
John Pack  
Tom Rasmussen  
Jon Startup  
Don Taylor  
Polly Weenig

UVCC Studentbody Offices  
UVCC - Office Administration  
Mansell & Associates Realty  
Novell, Inc.  
First Security Bank  
Scott Hancock Studio  
Nature's Sunshine  
Attorney at Law  
Student - Utah State University  
Hart Scientific  
Johnny B's  
UVCC - Computer Center  
Startup Candy Company  
  
UVCC - Registration Office



## UVCC FOUNDATION ADVISORY BOARD

Roger Bjarnson  
Wilford W. Clyde  
J. Marvin Higbee (Co-Chair)  
Doug Horne  
Merlynn K. Jones  
Jeffrey Kahn  
Norman Nielsen  
Glen A. Overton  
David K. Palfreyman  
C. Dee Sandgren  
Wilson W. Sorensen (Co-Chair)

### Business:

Bonneville Bank  
Geneva Rock  
Wicat  
Horne Lodging Properties  
Jones Paint & Glass  
First Security Bank  
Scera  
Heritage Schools  
Central Bank & Trust  
Businessman  
UVCC President Emeritus

Source: Utah Valley Community College, Development Office

## ADVISORY COMMITTEES 1990 - 1991

### Accounting

Joe Squire - Chairman  
Lois Anderson  
Steve Densley  
Diane Hicken  
E. Dee Hubbard  
Gene Hughes  
Mercedes Smith  
Lewis Tippets  
Kelly Ward

### Air Conditioning & Refrigeration Technology

Richard Carman  
Thoral Collings  
Dean Gunther  
Robert Remund

### Automotive Technology

Chris Bassett  
Steve Frandsen  
Melvin Ferguson  
Clay Liston  
Kevin Lloyd  
Jim MacFarland

### Building Construction & Construction Management

Cont Jones  
Gordon Dawe  
Robert Hansen  
Dave Hardy  
Karl Stum

### Business Management

William Anderson  
Ladd Black  
Mac Boyer  
Brent DeMille  
Ken Fakler  
Kelly Liljenquist  
Tim Morris  
Brad Mortenson  
John Startup  
Ron Tiffany

## ADVISORY COMMITTEES

1990 - 1991

(continued)

### Cabinetry & Architectural

#### Woodwork

David Barlow  
Richard Fetzer  
Lloyd Hone  
Markay Johnson

### Child Education & Family Studies

Rudy Anderson  
Janet Geary  
Marleen Hirschi  
RonLynn Jenkins  
Ireta Midgley  
Mary Olsen  
Diane Pace  
Anita Spainhower  
Cheryl Wright

### Collision Repair

#### Technology

Lee Mackey, Chairman  
Lee Bellows  
Bruce Keetch  
Ronald Lourenco  
Robin Roberts  
Steve Whitlock

### Computer Science & Information Systems

Richard Hodson, Chairman  
Lois Anderson  
Alan Ashton  
Elaine Bonham  
Richard Bradford  
Steve Carter  
Alan Dixon  
Lee Murdock  
Brett Parkinson  
Norm Wright

### Diesel Mechanics Technology

John Crandall  
Fred Fairbanks  
Albert Harmer  
Art Johnson  
Don Jones  
Brent Mickelson

## ADVISORY COMMITTEES

1990 - 1991

(continued)

### Drafting Technology

#### **Mechanical Drafting**

Jerry Barker  
Ephraim Escamilla  
Bryan Jacobson  
Mike Kipp  
Dan Olsen

#### **Surveying**

Larry Buss  
Donald Cole  
Clyde Naylor  
John Stahl  
Al York

#### **Structural Drafting**

Terry Beighley  
Mike Long  
Mike Luke  
David Patten  
Max Powell

### **Architectural Drafting**

Guilford Rand  
Lee Knell  
Eric Sandstrom  
George Olson  
David Markham

### Electrical Automation & Robotics Technology

O. Dewey Bennett  
Richard Bogus  
Bernard Cope  
Howard Eves  
Boyd Miner  
Anton Tonc  
Rulon Wells

### Electronic & Computer

#### Technology

Tony Coates  
Bill Gillman  
John Greenhalgh  
Mark Hoyt  
Stephen Jeppson  
Gary Maag  
Dick Morrell  
Richard Ohran  
David Owen  
Peter Underlin

## ADVISORY COMMITTEES

1990 - 1991

(continued)

### Environmental Technology

Gordon Beals  
Travis Black  
Brent Bradord  
Carol Kotler  
Willard DeVault  
David Gunn  
Chris Horting  
Charles Jeffs  
Garland Mayne  
Jay Pitkin  
Judy Sims  
Gayle Smith  
Neil Taylor

### Fashion Merchandising

Diane Downs  
Donna Judson  
Jana Linnell  
Ron Sumner  
Julie Wiscombe

### Finance & Banking

Andy Anderson  
Bret Van Ausdal  
Scott Cartwright  
Richard Hillam  
Paul Jacobson  
Robert Kallas  
Nanette Lassen  
Rod Lisonbee  
Dennis Wanlass  
Blaine Willes  
Les Wolfe

### Fire Science

Ralph Anderson  
Dave Bentley  
Lynn Borg  
J. Steve Dunaway  
William Feeney  
Lorayne Frank  
Andrew Glad  
Brent Haliday  
D. Pete Hansen  
Robert Headman  
Larry Hinman  
Bill Leavitt  
Max Lowe  
Clyde Palmer  
John Shield  
Grant Walker

## ADVISORY COMMITTEES

1990 - 1991

(continued)

### Graphics/Commercial Art

Jeff Bell  
Steve Bushman  
Jeff Colyar  
Bob DeWitt  
Dave Harmon  
Wayne Harward  
Lisa Hatch  
Steve Keele  
Levor Oldham  
Chuck Revill  
Karren Turner  
Steve Weisenberger  
Bevin Wulfenstein

### Hospitality Management

Jerry Anderson  
Owen Black  
Stanley Briggs  
Sam Brooks  
Paul Christensen  
Jim Ferguson  
Glen Sandberg

### Human Services

Jay Bawden  
Jan Cook  
Lloyd Evans  
Brian Miller  
Daile Pikus  
Dick Urban

### International Business

Eric Anthony  
Edmond Dosch  
Barbara Everett  
Lloyd Hansen  
Malan Jackson  
Randy Lindstrom  
David Pearson  
Kent Pinney  
Lee Radebaugh  
Stan Reese  
Barry Thompson  
John White

### Learning

#### Enrichment

Rod Barlow  
Anagene Cottrell  
Karin Swendsen

#### Legal Assistant

Renee Allan  
Lois Anderson  
Donna Barrett  
David Bradford  
Max Bullett  
Billie Casper  
Gary Hill  
Stuart Hinckley  
Michael Moss  
Barbara Ochoa  
Marilu Peterson  
Joseph Raynes  
Peter Reynolds  
Hugh Rode  
David Sam 99

## ADVISORY COMMITTEES

1990 - 1991

(continued)

### Lineman Technology

Dean Cordus  
Doug Gadd  
Carl Jones  
Rick Marchal  
Lyle Powell  
Glen Spivey  
Brent Thomas

### Machine Tool Technology

Duane Carrier  
Max Healy  
Howard Knight  
Rod Merrell  
Evan Mitchell  
Danny Olsen  
Andy Thatcher

### Minority Programming

Cynthia Akins  
Robert Archuleta  
Rod Barlow  
Henry Chai  
Grant Cook  
J.D. Davidson  
Maria Fernandez  
Steve Hall  
Jaymes Helmstetler  
Ana Roselia Hinojos  
Frank Hinojos  
Ladybird Jack  
Malan Jackson  
Marion Jackson  
Michael Johnson  
Tom Keele  
George Lee  
Marilyn Mansfield  
Shelley Olsen  
Val Peterson

Lenora Plothow  
Justin Roundstone  
Dale Tingey  
Abdou Touati  
Peter Uluave  
Esther Webster

### Nursing

Linda Barlow  
John Bramall  
Lee Duke  
Jo Nielson  
Lane Pedersen  
Linda Tulimafua

## ADVISORY COMMITTEES

1990 - 1991

(continued)

Office Technology  
& Administration

Executive Secretary

Lisa Ciriako

Jody Gonzales

Legal Secretary

Maxine Christensen

Leuzi Cardoso

Information Processing

Mike Lamkin

Donna Payne

Nancy Sanchez

Maralyn Harmstron

Medical Secretary

Oris Boan

Jane Sowards

Office Manager

Frances Penne

Toni Sullivan

Receptionist

Lorena Aiken

Melody Downey

At Large

Lois Anderson

Kay Peterson

Jolene Succo

Casey Simmons

Physical Plant

Management

Lynn Brough

Marshall Leach

Phil Lott

Don Underwood

Mark Woods

Professional  
Driving

Dick Allen

Wayne Cedarholme

Paul Garrett

Ted Lockhart

Robert Morrey

Lee Porter

Marlon Snow

Pam Woodward



## ADVISORY COMMITTEES

1990 - 1991

(continued)

### Public Relations

Curtis Bramble  
Jerry Conder  
Mitchell Haws  
Cynthia Krebs  
Verl Morgan  
Val Peterson  
Annette Thomason  
Sheila Underwood  
Linda Walton

### Welding Technology

Nile Christofferson  
Duane Corrier  
Wallace Hamblin  
Kevin Kessler  
Max Knight  
Ron Noyes  
Robert Patch  
Robert Max Walker

## CLUBS AND ORGANIZATIONS

### CHEERLEADERS

A branch of the student government with the specific purpose to promote and increase school spirit and unity. All students are invited to participate in school sponsored games and activities. Advisor: Kristen Anderson

### CCDC

Community College Deaf Club offers social and cultural support. Promotes deaf awareness and a positive interaction between the school and the student. Anyone interested in learning sign language and especially those who are deaf or have skills using sign would benefit the most from membership in this club. Advisor: Elaine Smiley

### COUNTRY WESTERN DANCE CLUB

This club provides its members the opportunity to update dance skills, create new dance steps and meet people who share an interest in country dancing. Besides getting involved in school activities, the club sponsors two dances a month. Advisor: D.J. Smith

### DPMA

The Data Processing Management Information Club is for those interested in computers and those pursuing a career in data processing. Members of the industry are invited to discuss various aspects in this field. Members participate in a national programming contest. Advisor: Chris Jones

Source: Utah Valley Community College, Student Center

## CLUBS AND ORGANIZATIONS

(continued)

**DEX** Delta Epsilon Chi, better known as DECA, is a program centering around professional activities such as marketing, management, merchandising and hospitality. The purpose is to provide real life experiences so that the students can apply what they have learned to real life situations. Advisor: Sue Anderson

### **DRAFTING CLUB**

This club promotes activities and social contact with other schools and professionals in the field. They provide tours to local companies and guest speakers for the purpose of professional and social development of the member. Advisor: Bart Lynn

### **GERMAN CLUB**

Experience cultural activities related to the German language. This is a great club to join if you speak a little German or none at all, but enjoy participation in German cultural events. Advisor: Rudy Lehnhardt

### **HAM RADIO**

Complete amateur radio facilities are available to club members. Discussions will increase your knowledge in radio use to help you become licensed. Participate in rescue missions and relaying public information in the area and communicate throughout the world. Advisor: David Draper

## CLUBS AND ORGANIZATIONS

(continued)

### INTERCOLLEGIATE KNIGHTS

This is a branch of the National Honorary Service Fraternity. Members participate in a variety of service projects. Advisor: June Reid

### INTERNATIONAL SPANISH

Cultural activities related to the Spanish language are sponsored for those who speak Spanish or wish to learn. Advisor: Del Shumway

### KARATE

Our main purpose is to help club members learn the mental, physical and spiritual aspects of Kenpo Karate. Karate tournaments are sponsored throughout the year. This club is for those who would like to develop their skills in karate. Advisor: Doug Anderson

### LAMBDA DELTA SIGMA

A sorority sponsored by the LDS Church to strengthen women, allow them to have influence in student affairs, render campus and community services, enjoy wholesome social activities and build lasting bonds of sisterhood. Advisor: Gerrie Bills

## CLUBS AND ORGANIZATIONS

(continued)

**LDSSA** The goal of the Latter Day Saint Student Association is to bring students unto Christ. This is accomplished by student participation with religious education and student activities which include community service, dances, show choir and many other events. Advisor: Dave Litchford

### LAW SOCIETY

Members learn about the law through activities, seminars and working with those already established in the field of law. Improve your chances for success in the real world through knowledge of laws and leadership skills. Advisor: Sheila Underwood

### PCDC

Personal and Career Development Club for non-traditional students will provide socialization, networking and help build self-esteem. It is especially designed to help students in becoming emotionally and economically self-sufficient and provide a safe environment for growth and learning. Guest speakers will be invited to speak in areas of interest. Advisor: Anita Musto

### PBL

Phi Beta Lambda's purpose is to bring business and education together in a positive working relationship by promoting competition, developing character, teaching leadership and learning to have self-confidence. PBL is the collegiate level of FBLA. Membership is open to all students who have one business related class. Advisor: Colleen Vawdrey

## CLUBS AND ORGANIZATIONS

(continued)

**RODEO CLUB** Compete in college rodeos throughout Utah and Idaho. Enjoy competing together as a team and participating in many other activities outside of rodeo competition. This club is open to anyone who is interested in rodeo whether you ride, rope or just enjoy a great time. Advisor: Russ Black

**RUSSIAN** Cultural activities related to the Russian language are sponsored for those who speak Russian or wish to learn. Advisor: Eberhardt Lehnardt

### **SIGMA GAMMA CHI**

A fraternity sponsored by the LDS Church to promote leadership, scholarship, spirituality, service, patriotism and brotherhood. This is a great opportunity to get involved in school affairs and meet people. Advisor: Wes Bitters

**SKI TEAM** The ski team gives students the opportunity to ski competitively against other college students. The team placed third in both men's and women's divisions in 1986 and 1987. Weber State, University of Utah, Utah State and Montana State are current competitors. Advisor: Bart Jacobs

**VICA** Vocational Industrial Clubs of America is for all trade, industrial, technical and health students. An emphasis is placed on dignity of work, education, fair play and high moral and spiritual standards. Prepare "...for leadership in the world-of-work" through State and National competitions. Advisor: Ken Ewell

## LIBRARY PATRONS

Academic Years 1983-84 through 1989-90

	<u>1983-84</u>	<u>1984-85</u>	<u>1985-86</u>	<u>1986-87</u>	<u>1987-88</u>	<u>1988-89</u>	<u>1989-90</u>
Patrons (counted 10:30 a.m.)	19,992	19,791	20,459	23,012	25,635	27,288	33,642
Materials Checked Out	5,269	4,474	5,953	7,398	9,019	11,758	13,742
Reshelled	9,159	11,336	12,672	14,786	16,708	18,223	36,378

Source: Utah Valley Community College, Library

## CONTENTS

### PHYSICAL FACILITIES

Physical Facilities, Building, Net Square Feet.....	109
Physical Facilities, Type of Space, Net Square Feet.....	110
Physical Facilities, Buildings in Progress.....	111
Physical Facilities, Priority Requests.....	112
Age of Physical Facilities, Placed in Service, Square Footage.....	113
Age of Physical Facilities, Placed in Service, Square Footage, 1950-1989 (bar graph).....	114
Physical Facilities, Net Square Feet (bar graph).....	115



## PHYSICAL FACILITIES

<u>Building</u>	<u>Net Square Feet</u>
Activity Center	35,487
Administration	55,007
Assessment Center (Trailer)	1,303
Automotive & Auxiliary Buildings	91,789
Business Building	64,510
Central Plant & Auxiliary Buildings	11,016
Engineering (Trailer)	1,337
Environmental Lab	6,228
Learning Resource Center	53,775
Pioneer House	1,283
Planning Center & Auxiliary Buildings	3,630
Provo Campus	150,678
Science Building	74,252
Student Center	53,861
Trades	130,382
Other Buildings	1,542
Total Net Square Feet*	736,080

\* SQUARE FOOTAGE FIGURES ARE APPROXIMATE

Source: Utah Valley Community College, Office of Institutional Research and Strategic Planning

## PHYSICAL FACILITIES

<u>Type of Space</u>	<u>Net Square Feet</u>
Classrooms	59,934
Classroom Laboratories	56,378
Special Class Laboratories/Individual Study Labs	190,126
Offices/Conference Rooms	85,267
Study/Library Facilities	15,638
General Use Facilities	83,656
Physical Education Facilities	25,648
Special Use Facilities	5,680
Restrooms/Circulation/Custodial/Mechanical Area	213,753
Total Net Square Feet*	736,080

\*SQUARE FOOTAGE FIGURES ARE APPROXIMATE

Source: Utah Valley Community College, Office of Institutional Research and Strategic Planning

## PHYSICAL FACILITIES

<u>Buildings in Progress</u>	<u>Net Square Feet</u>
Administration Completion	23,270
Learning Resource Center Expansion	39,780
Student Center Addition	30,520
Total Net Square Feet*	93,570

\* SQUARE FOOTAGE FIGURES ARE APPROXIMATE

Source: Utah Valley Community College, Office of Institutional Research and Strategic Planning

## PHYSICAL FACILITIES

<u>Priority Requests for 1991</u>	<u>Net Square Feet</u>
Community College Complex	132,650
Physical Plant	65,000
Technology Building	76,400
Humanities/Art Building	42,500
Total Net Square Feet*	316,550

\*SQUARE FOOTAGE FIGURES ARE APPROXIMATE

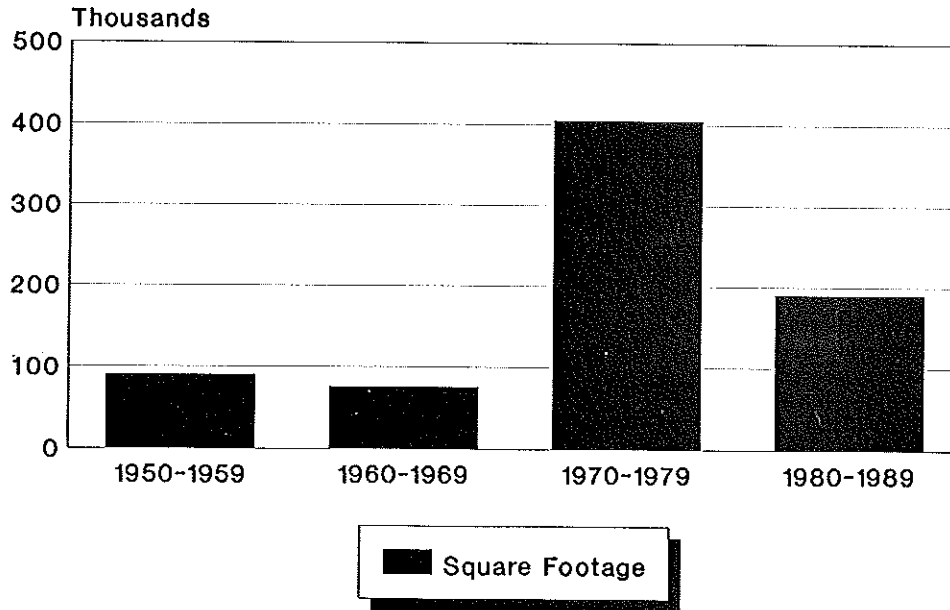
Source: Utah Valley Community College, Office of Institutional Research and Strategic Planning

## AGE OF PHYSICAL FACILITIES

<u>Placed in Service</u>	<u>Square Footage</u>
1950-1959	89,393
1960-1969	74,800
1970-1979	404,275
1980-1989	<u>189,454</u>
Total Square Footage	757,922

Source: Utah Valley Community College, Institutional Research and Strategic Planning

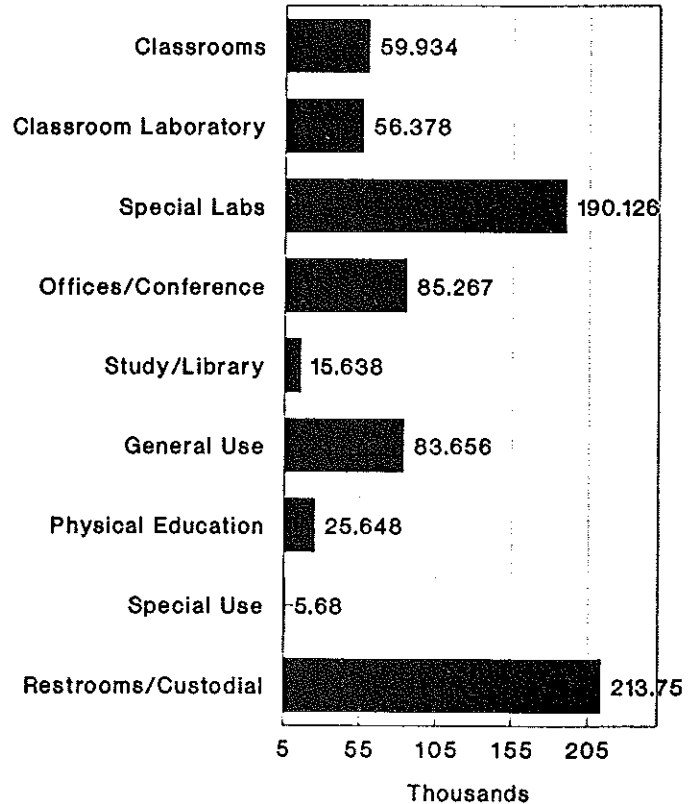
## AGE OF PHYSICAL FACILITIES Placed in Service



Source: Utah Valley Community College, Office of Institutional Research and Strategic Planning

# PHYSICAL FACILITIES

## Net Square Feet



Source: Utah Valley Community College, Office of Institutional Research and Strategic Planning

