

PREFACE

This FACT BOOK is the first for Utah Valley Community College and will be an annual publication of the Office of Institutional Research and Strategic Planning. This document is designed to serve our community by translating accumulated data into useful information to those within and outside the College.

While every effort has been made to solicit input for what data should be represented in this FACT BOOK, not every "fact" about the College is represented here. The decision had to be made early in the development of the FACT BOOK to limit published data. Even though some sections may not be complete and some areas of the College may not be represented, the Office of Institutional Research and Strategic Planning offers no apologies, but instead asks users of the book for comments freely as to what data should or should not be included in the future. Please contact our office, (801)222-8000 ext. 365, with your comments.

The Office of Institutional Research and Strategic Planning wishes to thank the individuals or departments who contributed to this publication and appreciates the opportunity to provide this service.

Nancy M. Smith

Nancy M. Smith, Ph.D

Director

Office of Institutional Research and Strategic Planning

CONTENTS

DIVISION

ADMINISTRATION	1
GENERAL INFORMATION	11
ENROLLMENT	29
FACULTY	48
SUPPORT	51
BUDGET AND FINANCE	72
PHYSICAL FACILITIES	78

CONTENTS

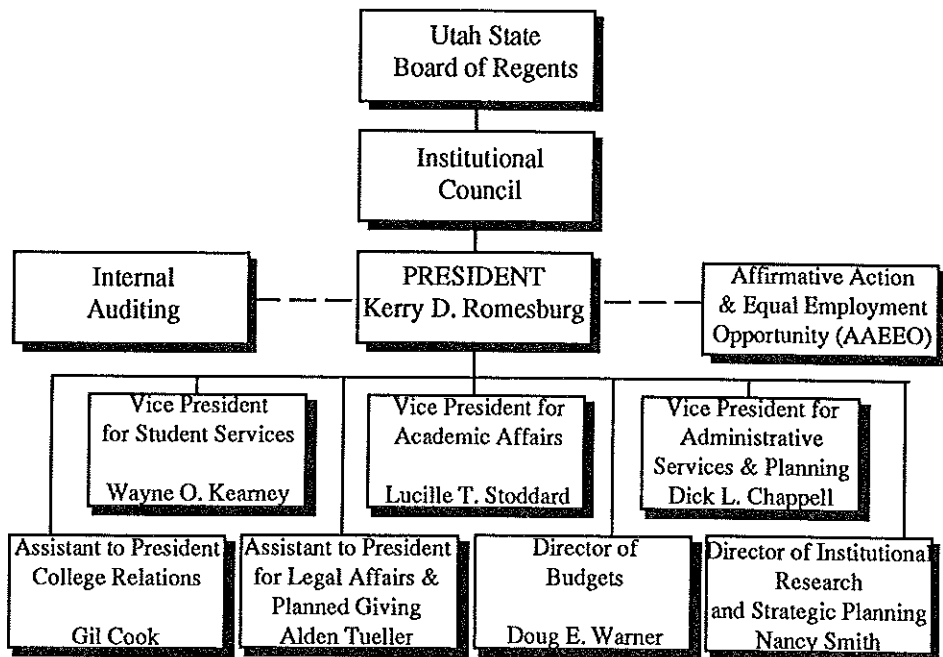
ADMINISTRATION

Institutional Mission	1
College Organizational Chart	2
Academic Affairs (Organizational Chart)	3
Academic Affairs (Organizational Chart, Continued)	4
Student Services (Organizational Chart)	5
Administrative Services (Organizational Chart)	6
College Relations (Organizational Chart)	7
Legal Affairs (Organizational Chart)	7
Institutional Council Members, Appointed as of June 30, 1989	8
Institutional Council Chairs, Since July 1978	9
Former Institutional Council Members	10

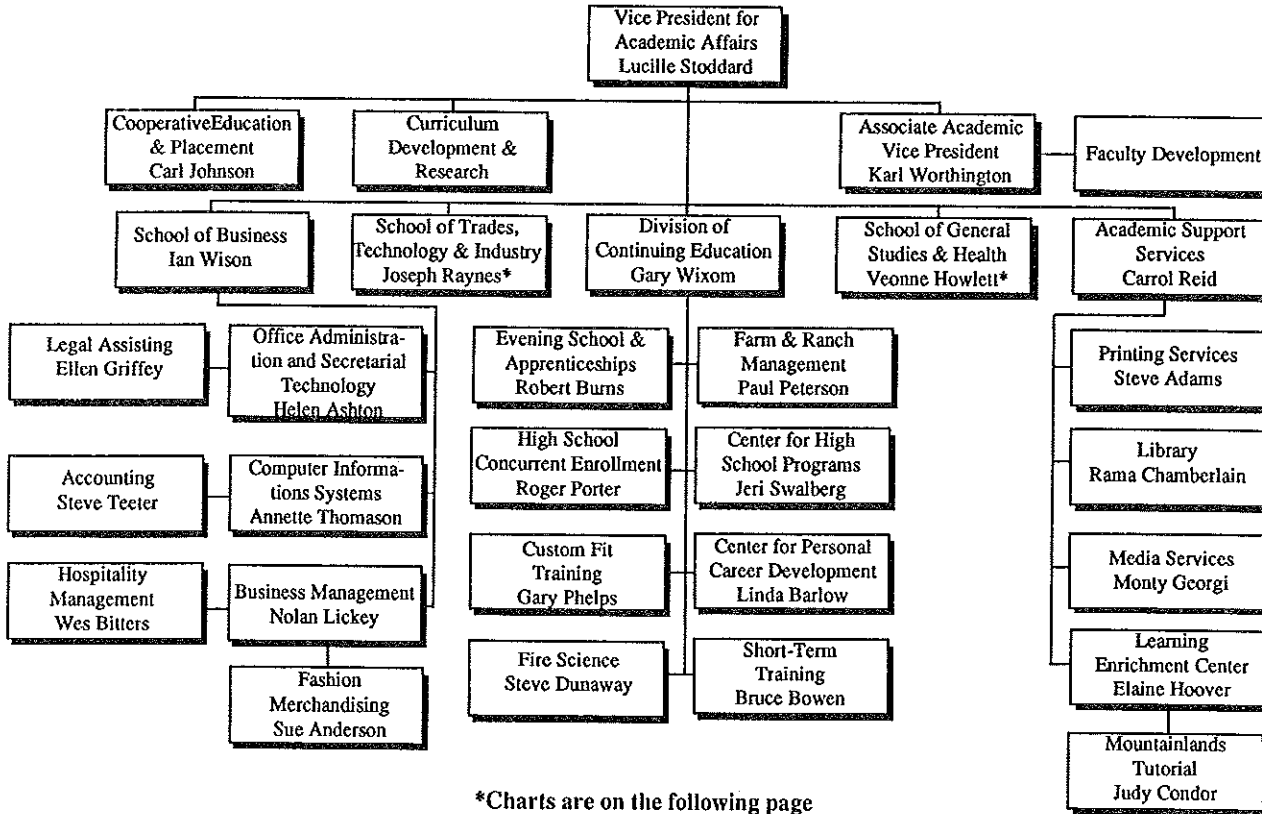
INSTITUTIONAL MISSION

Utah Valley Community College is dedicated to providing a broad range of academic, vocational, technical, and social opportunities and experiences designed to encourage and assist students in attaining their goals and maximizing their talents and potential, personally and professionally. The college is committed to meeting community needs for occupational training, general and transfer education, continuing education for personal enrichment and career enhancement, social and cultural opportunities, and student support services.

Utah Valley Community College Organizational Chart



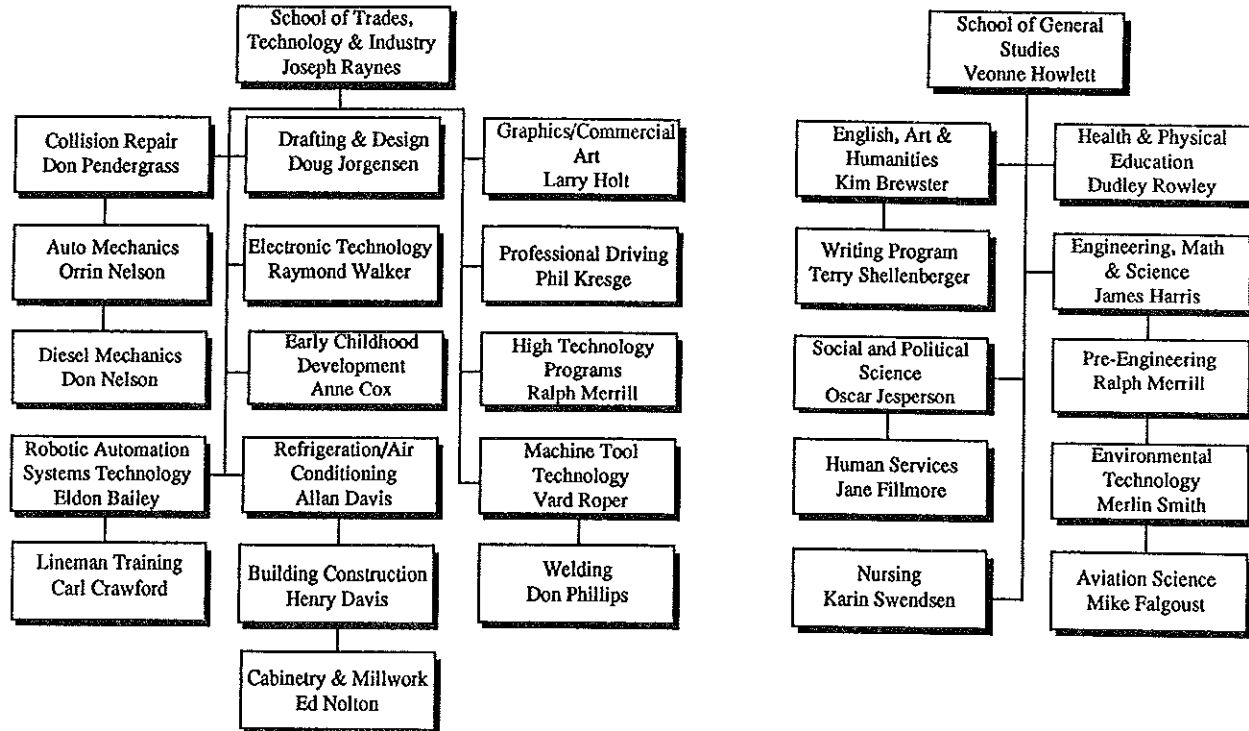
Academic Affairs



*Charts are on the following page

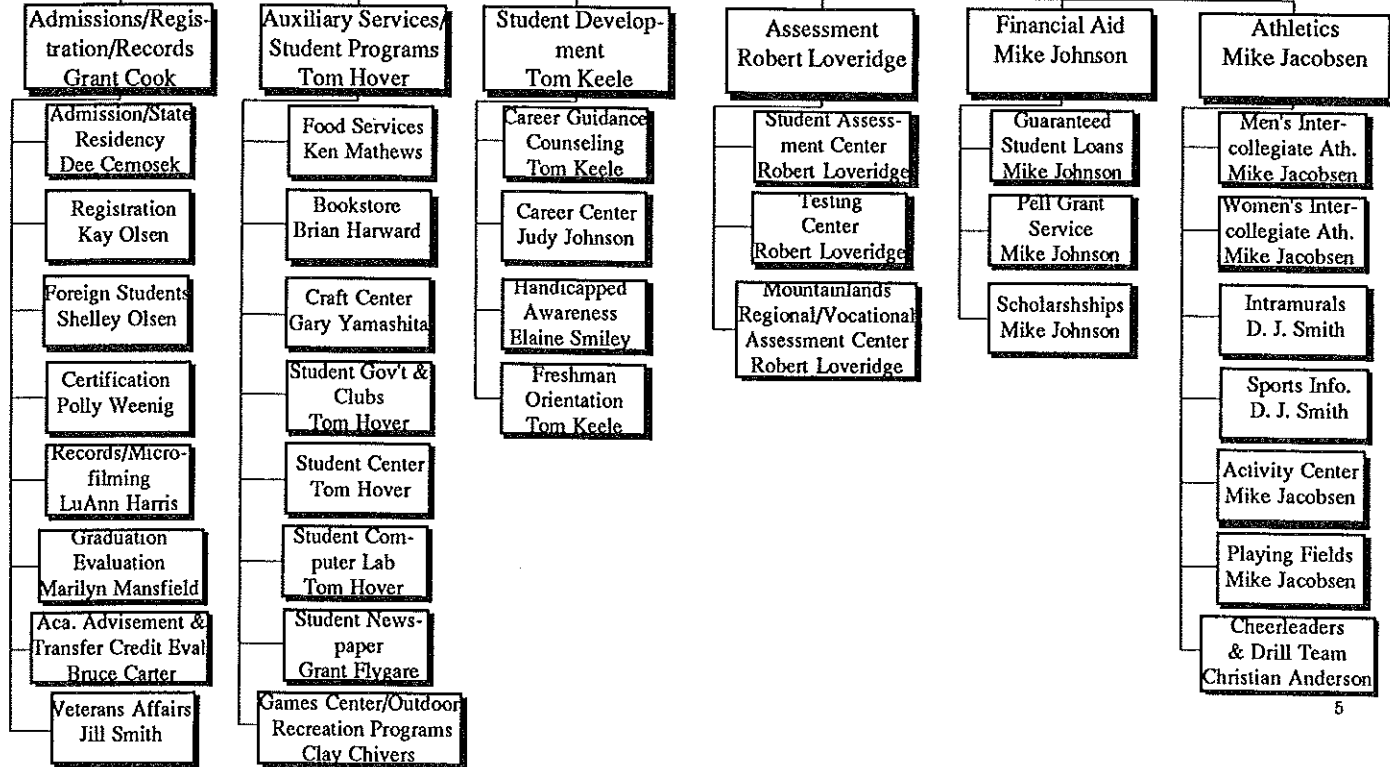
Academic Affairs

(Continued)

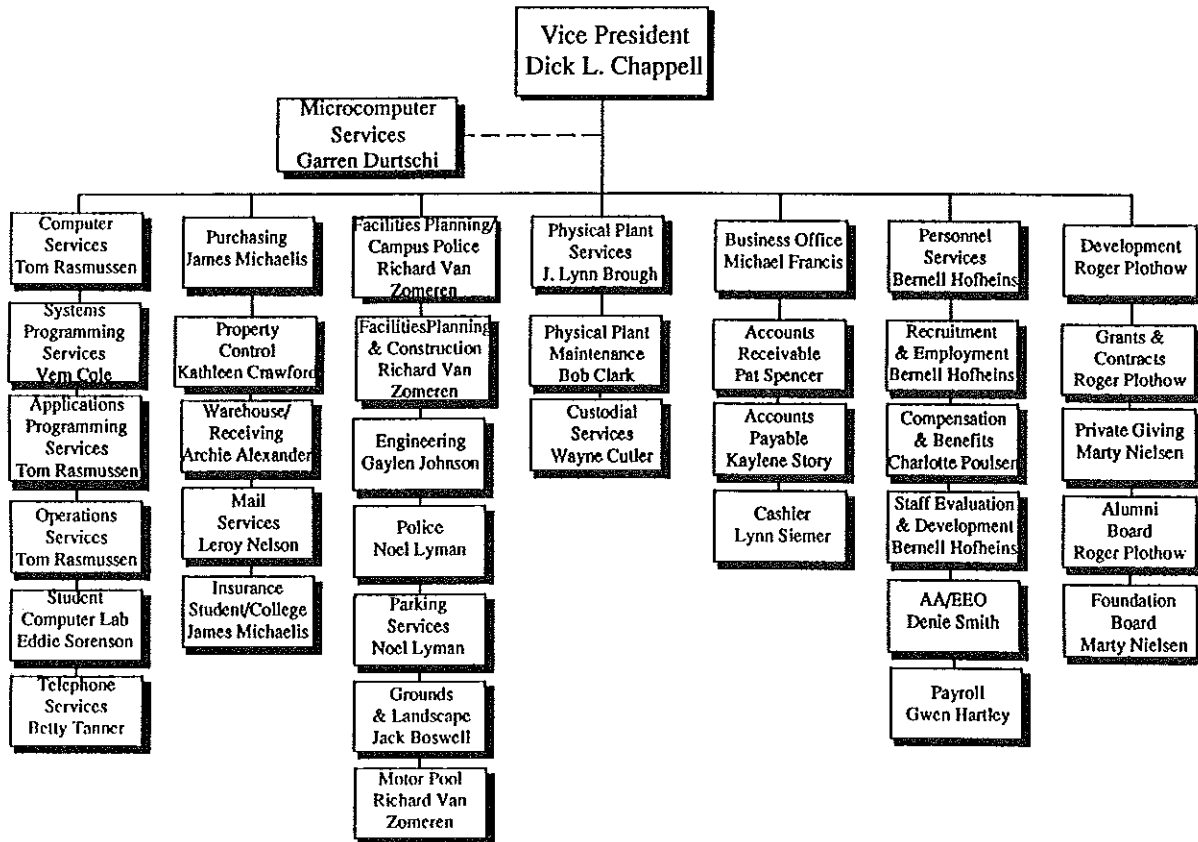


Student Services

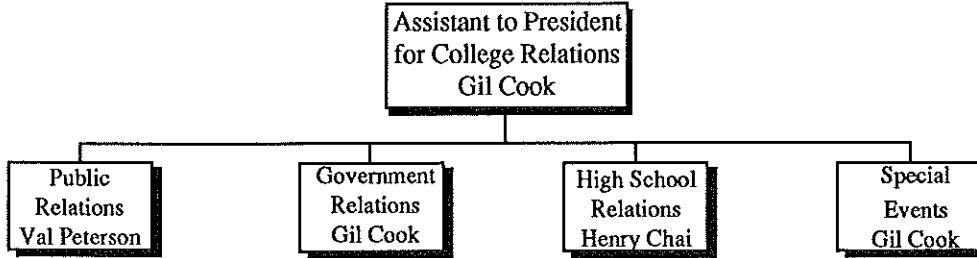
Vice President
Wayne Kearney



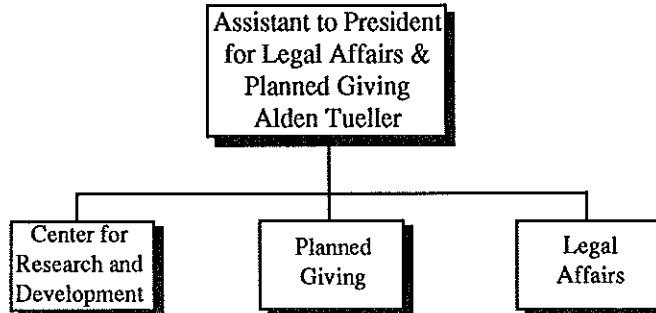
Administrative Services



College Relations



Legal Affairs



INSTITUTIONAL COUNCIL

Members Appointed by the Governor of Utah
as of June 30, 1989

<u>NAME</u>	<u>TERM EXPIRES</u>
Alan C. Ashton	6/30/93
Joseph A. Cannon	6/30/93
Ray M. Harding, Jr.	6/30/91
Nancy M. Heuston	6/30/91
DeLance W. Squire, Chair	6/30/93
Jon W. Startup	1/11/90
Jay Weaver	6/30/91
Brent J. Welch	6/30/91
Mary Anne Q. Wood	6/30/93
Deryn Young	6/30/90

INSTITUTIONAL COUNCIL CHAIRS

	<u>When Elected</u>
Grant Burgon	July 1978
Charles Bates	July 1980
Howard Pace	July 1982
Mary Anne Wood	September 1985
DeLance Squire	July 1989

Source: Utah Valley Community College, Office of the President

FORMER INSTITUTIONAL COUNCIL MEMBERS

Warren E. Bartel

Charles L. Bates

Grant C. Burgon

Aileen Clyde

Bruce T. Griffin

Robert E. Halladay

David A. Jacobsen

Wm. Rolfe Kerr

Robert D. McDougall

Raymond J. Noorda

Margaret L. Nelson

Howard Pace

Philip Perlman

Howard J. Ruff

Eris Y. Sumner

Boyd C. Sunderland

Provo, Utah

Springville, Utah

Orem, Utah

Springville, Utah

Ogden, Utah

Murray, Utah

Provo, Utah

Provo, Utah

Provo, Utah

Provo, Utah

Salt Lake City, Utah

American Fork, Utah

Salt Lake City, Utah

Springville, Utah

Orem, Utah

Chester, Utah

CONTENTS

GENERAL INFORMATION

History of Utah Valley Community College	11
College Calendar, 1989 Fall Quarter	15
College Calendar, 1990 Winter Quarter	16
College Calendar, 1990 Spring Quarter	17
College Calendar, 1990 Summer Block	17
College Presidents	18
College Name Changes	18
Student Body President History	19
Utah State Board of Regent Chairs	21
Utah Commissioners of Higher Education	21
Utah State Board of Education Chairs	22
Utah State Board for Vocational Education Chairs	22
Athletics, Final Records and Conference Finishes	23
Tuition and Student Fees, Fall 1986, 1987, 1988, 1989	24
Utah Valley Population, 1970, 1980, 1988, Change 1970-80	25
Population Growth Projections, 1988, Projected 2000	26
Utah County Growth Indicators	26
Utah Valley Employment by Occupation, 1987	27
Race and Sex Composition of Employed Persons in Utah Valley, 1987	28

HISTORY OF UTAH VALLEY COMMUNITY COLLEGE

Utah Valley Community College, Orem, is situated in the heart of Utah County. Nestled beneath mountains on all sides, the name Utah Valley has become synonymous with Utah County and is used interchangeably throughout the state. With a population of 260,000 it is the second largest county in the State and includes twenty incorporated cities. The college serves primarily the Mountainlands District of students with Utah County residents comprising 70 percent of it's enrollment.

The college was established when the Utah State Legislature passed an appropriation of \$100,000 for the biennium of 1936-38 for vocational education. Central Utah residents who had been supported by government funding, wanted to upgrade their skills in order to obtain better jobs and many enrolled in vocational classes administered by the school districts. However, the school districts were not able to give adequate supervision to organize, conduct, coordinate, and supervise adult programs, and in the spring of 1938, Hyrum E. Johnson of Provo was appointed supervisor of vocational education for Utah and Heber Valleys.

*In the fall of 1941 the scattered classes throughout the two valleys were moved to a central location in south Provo and the Fairgrounds Campus was enthusiastically welcomed by the staff and students. Provo School District assumed the financial supervision of the new school and both federal and state monies flowed through the District to the school. It became imperative that the school have proper identification and the name **Central Utah Vocational School** was selected. With the advent of World War II, most of the school's operating budget came from federal government funds for war production training.*

The birth of the school as a state institution was March 15, 1945 when Governor Herbert B. Maw signed a bill appropriating \$50,000 to operate for the biennium of 1945-47. A second bill was introduced and adopted in 1947 making the school a permanent state institution without any cut-off date. In 1946 Wilson W. Sorensen was appointed director of the school by the Utah State Board for Vocational Education and was the chief executive officer until June 1982.

In 1948 a new site, located between 1200 and 1400 North on 150 East in Provo, was obtained. The site was purchased by the four school districts (Alpine, Nebo, Provo and Wasatch) as well as Provo City and Utah County, with the understanding, if the property were given to the school, the state would appropriate the money for buildings. The location of the campus was considered ideal because of accessibility to students from Provo High School, the Vocational School, or Brigham Young University.

In March 1953 the name of the school was changed from Central Utah Vocational School to Utah Trade Technical Institute. In March 1967 the name was again changed to Utah Technical College at Provo.

In February 1966 the Utah State Board for Vocational Education approved granting Associate of Applied Science Degrees and on July 14, 1967 the State Board approved offering general education courses. In August of 1971 the Associate of Science Degree was approved.

Enrollment growth became so immense the Provo Campus was no longer adequate and a search for a new site was begun. Several locations in Provo and Orem were reviewed and a decision was made to purchase 185 acres in southwest Orem. This location was chosen because of its landscape, excellent traffic flow and accessibility. The business education building, student center, heating plant and auto trades building were occupied at the beginning of the 1976-77 school year.

In 1974 the Associate of Science Degree was discontinued, but approval was given by the Board of Regents to again award the degree in December 1980. In 1981 the Legislature approved granting an Associate of Science Degree in general education on a three-year probationary basis with permanent approval in 1985.

On June 1, 1982 Wilson W. Sorensen retired as President and Dr. J. Marvin Higbee was selected by the Board of Regents as the new President.

Since the move to the Orem Campus the College has continued to grow with a trades building, learning resource building, athletic center and administration building added. As classes and service facilities were moved from Provo to Orem the vacated areas were filled by new programs, thus maintaining a split campus. A new science building was occupied in fall 1989.

In 1987 the legislature approved a name change better reflecting the location and mission of the college--Utah Valley Community College.

In October 1987 Dr. J. Marvin Higbee resigned as President and Dr. Lucille T. Stoddard was appointed Acting President until a new chief executive officer was selected.

Dr. Kerry D. Romesburg was appointed as President of Utah Valley Community College on July 17, 1988.

The Associate of Arts Degree was approved by the Board of Regents in 1987 and in 1989 the Regents and State Legislature approved funding for the Associate Degree Nursing program.

On October 21, 1988 the College was granted permission by the State Board of Regents to convert from a quarter to a semester calendar system. This change is scheduled to become effective summer semester 1990.

Sources: Utah Valley Community College--Office of the President
Utah Valley Community College--Office of Vice President for Academic Affairs
A Miracle in Utah Valley--The Story of Utah Technical College 1941-1982 by Wilson W. Sorensen

COLLEGE CALENDAR

1989 FALL QUARTER

Orientation and Advisement for New Students	August 28-30
Labor Day	September 4
Third Priority Phone-in Registration for Continuing and Readmitted Students	September 5, 6
Third Priority Walk-in Registration for Continuing and Readmitted Students	September 7, 8, 11-15
Payment Deadline for Early & Priority Registrations	September 15
Registration Closed	September 18, 19, 20
Late Registration	September 26
Instruction Begins	September 27
Harvest Holiday	October 23
Thanksgiving Holiday	November 22, 23, 24
Last Day of Classes	December 8
Final Examinations	December 11, 12, 13
Fall Quarter Ends	December 13

COLLEGE CALENDAR

1990 WINTER QUARTER

First Priority Phone-in Registration for Continuing & Readmitted Students	November 20, 21, 22
Second Priority Walk-in Registration for Continuing & Readmitted Students	November 28-30, December 1
Third Priority Phone-in Registration for Continuing & Readmitted Students	December 4
Winter Quarter Registration Closed	December 5, 6
New Student Orientation, Advisement & Registration by Appointment	December 7, 8
Third Priority Walk-in Registration for Continuing & Readmitted Students	December 12, 13, 14
Registration Closed	December 18 - January 1
Instruction Begins	January 4
President's Day Holiday	February 19
Last Day of Classes	March 14
Final Examinations	March 15, 16, 19
Winter Quarter Ends	March 19

COLLEGE CALENDAR

1990 SPRING QUARTER

Instruction Begins	March 27
Memorial Day Holiday	May 28
Instruction Ends	June 4
Preparation/Study Day	June 5
Final Examinations	June 6, 7, 8
Spring Quarter Ends	June 8
Commencement	June 8

1990 SUMMER BLOCK

Instruction Begins	June 19
Independence Day Holiday	July 4
Pioneer Day Holiday	July 24
Last Day of Classes	August 6
Preparation/Study Day	August 7
Final Examinations	August 8, 9, 10
Summer Block Ends	August 10

COLLEGE PRESIDENTS

Mr. Wilson W. Sorensen	1946-1982
Dr. J. Marvin Higbee	1982-1988
Dr. Kerry D. Romesburg	1988-present

COLLEGE NAME CHANGES

1941	Central Utah Vocational School
1963	Utah Trade Technical Institute
1967	Utah Technical College at Provo
1987	Utah Valley Community College

STUDENT BODY PRESIDENT HISTORY

Don A. Taylor	Spanish Fork, Utah	1946-1947
Mark H. Nilsen	Provo, Utah	1947-1948
Lee Russell Cardall	Salt Lake City, Utah	1948-1949
Thomas Donald Forsyth	Provo, Utah	1949-1950
Bill Hales	Pocatello, Idaho	1950-1951
Mark Anderson	Provo, Utah	1951-1952
William H. White	Goshen, Utah	1952-1953
Calvin Davies	Panguitch, Utah	1953-1954
Clark Jolley	Pleasant Grove, Utah	1954-1955
Blane Elton	Santaquin, Utah	1955-1956
Lynn Powell	Nephi, Utah	1956-1957
James G. Goodman	Roy, Utah	1957-1958
William Nuttall	Provo, Utah	1958-1959
Duane Johnson	Showlow, Arizona	1959-1960
Duane Johnson	Showlow, Arizona	1960-1961
Paul Hart	Orem, Utah	1961-1962
Robert Button	Provo, Utah	1962-1963
Glen LaVar Cox	Hinkley, Utah	1963-1964
Chuck Goodyear	Indianapolis, Indiana	1964-1965
Donald P. Fordham	Pleasant Grove, Utah	1965-1966
Jim Tilson	Spanish Fork, Utah	1966-1967
Gary Houser	Orem, Utah	1967-1968
Bruce Smith	Orem, Utah	1968-1969

STUDENT BODY PRESIDENT HISTORY

(continued)

Doug Wright	Provo, Utah	1969-1970
Richard L. Evans	Orem, Utah	1970-1971
Norm Thorson	Provo, Utah	1970-1971
Ken Law	Springville, Utah	1971-1972
Terry K. Holt	Brigham City, Utah	1972-1973
Randy Kidman	Ogden, Utah	1973-1974
LaVerl Crosby	Provo, Utah	1974-1975
Mel Poulsen	Richfield, Utah	1975-1976
William Reese	Vernal, Utah	1976-1977
Blake Buhler	American Fork, Utah	1977-1978
Bruce Burnett	Provo, Utah	1978-1979
Lee Barrus	Othello, Washington	1979-1980
Mark Fisher	Lanham, Maryland	1980-1981
Kerry Graves	Mapleton, Utah	1981-1982
Scott Banasky	Green River, Utah	1982-1983
Gordon Wilson	Lehi, Utah	1983-1984
Jay Deuel	Tucson, Arizona	1984-1985
Bobby Thomas	California	1985-1986
George Marshall	Orem, Utah	1986-1987
Ben Gould	Orem, Utah	1987-1988
Jim Woods	Provo, Utah	1988-1989
Deryn Young	Alton, Utah	1989-1990

UTAH STATE BOARD OF REGENT CHAIRS

Peter W. Billings	1969-1973
Donald B. Holbrook	1973-1973
George G. Hatch	1973-1977
Donald B. Holbrook	1977-1981
Kem C. Gardner	1981-1985
Sue Marie Young	1985-1987
W. Eugene Hansen	1987-1989
Douglas S. Foxley	1989-present

UTAH COMMISSIONERS OF HIGHER EDUCATION

G. Homer Durham	1969-1976
Terrel H. Bell	1976-1981
Arvo Van Alstyne	1981-1985
Wm. Rolfe Kerr	1985-present

UTAH STATE BOARD OF EDUCATION UTAH STATE BOARD FOR VOCATIONAL EDUCATION CHAIRS

1988-present	Ruth Hardy Funk	1970-72	Helen B. Ure
1985-88	Keith T. Checketts	1968-70	LeGrand P. Backman
1984-85	M. Richard Maxfied	1966-68	Lynn S. Richards
1982-84	Oscar McConkie	1964-66	Sheldon S. Allred
1981-82	Jay Monson	1962-64	LeGrand P. Backman
1980-81	W. Dean Belnap	1960-62	Moroni H. Brown
1979-80	Lila Bjorklund	1958-60	W. C. Cole
1978-79	Jay Monson	1956-58	Charles A. White
1977-78	W. Dean Belnap	1954-56	R. V. Larson
1976-77	Joan Burnside	1952-54	Rulon Hinkley
1975-76	Reuben D. Law	1950-52	William O. Bentley
1973-75	W. Robert Wright	1944-50	E. Allen Bateman
1972-73	John L. Owen	1940-44	Charles H. Skidmore

Source: Utah State Office of Education

ATHLETICS

FINAL RECORDS AND CONFERENCE FINISHES

	<u>1982-83</u>	<u>1983-84</u>	<u>1984-85</u>	<u>1985-86</u>	<u>1986-87</u>	<u>1987-88</u>	<u>1988-89</u>
WOMEN							
Basketball	0-14 (6th)	6-8 (4th)	20-3 (1st)	25-1 (1st)	23-4 (1st)	23-4 (1st)	17-8 (5th)
Softball			19-16 (2nd)	19-14 (2nd)	27-8 (1st)	17-12 (1st)	22-17 (1st)
Volleyball	26-5 (2nd)	29-8 (1st)	25-6 (2nd)	30-8 (1st)	21-12 (2nd)	35-6 (1st)	26-5 (1st)
Rodeo	3rd	2nd	3rd	4th	3rd	3rd	3rd
MEN							
Basketball	12-16 (4th)	18-12 (4th)	18-12 (3rd)	21-11 (1st)	16-14 (5th)	22-10 (4th)	29-5 (1st)
Baseball	30-10 (1st)	28-12 (1st)	19-18 (2nd)	30-15 (1st)	18-19 (1st)	21-16 (2nd)	33-11 (2nd)
Rodeo	3rd	3rd	3rd	2nd	2nd	3rd	1st

Source: Utah Valley Community College, Sports Information Director
 Utah Valley Community College, Rodeo Club

TUITION AND STUDENT FEES

	<u>FALL 1986</u>	<u>FALL 1987</u>	<u>FALL 1988</u>	<u>FALL 1989</u>
Resident				
Based on:				
5 Credit Hours	\$151	\$161	\$169	\$178
10 Credit Hours	\$246	\$266	\$279	\$308
15 Credit Hours	\$312	\$342	\$363	\$389
 Non-Resident				
Based on:				
5 Credit Hours	\$374	\$400	\$429	\$457
10 Credit Hours	\$644	\$705	\$749	\$818
15 Credit Hours	\$831	\$927	\$995	\$1,071

The tuition and fee schedule is partially linear; therefore, the amounts charged for tuition and fees change at each increment of total credit hours enrolled. The above figures show the amounts for three of these increments: 5, 10 and 15 credit hours.

Source: Utah Valley Community College, Fall Quarter 1986, 1987, 1988 and 1989 Class Schedules.

UTAH VALLEY POPULATION

<u>AREA</u>	<u>1970</u>	<u>1980</u>	<u>1988*</u>	<u>CHANGE 1970-80 (Percent)</u>
Provo	53,131	73,907	79,683	39.1
Orem	25,729	52,399	66,884	103.7
American Fork	7,713	12,417	16,178	61.0
Springville	8,790	12,101	14,651	37.7
Pleasant Grove	5,327	10,669	13,929	100.3
Spanish Fork	7,284	9,825	11,883	34.9
Payson	4,501	8,246	10,303	83.2
Lehi	4,659	6,848	8,713	47.0
Lindon	1,644	2,796	3,780	70.1
Mapleton	1,980	2,726	3,346	37.7
Alpine	1,047	2,649	3,577	153.0
Highland	--	2,435	3,884	--
Salem	1,081	2,233	2,773	106.6
Santaquin	1,236	2,175	2,855	76.0
Genola	424	630	754	48.6
Goshen	459	582	759	26.8
Cedar Hills	--	571	719	--
Elk Ridge	--	381	550	--
Unincorporated	12,771	14,516	19,779	13.7
COUNTY TOTAL	137,776	218,106	265,000	58.3

*Estimates based on figures prepared by the Utah Department of Employment Security, Labor Market Information.

Source: UVEDA Databook, 1988

POPULATION GROWTH PROJECTIONS

<u>Location</u>	<u>Estimated 1988 Population Total</u>	<u>1970-1988 Percent Increase</u>	<u>Projected 2000 Population Total</u>	<u>1980-2000 Percent Increase</u>
Utah County	260,000	59.4	340,027	55.9
Salt Lake County	700,000	35.0	849,320	36.0
Wasatch Front	1,700,000	36.9	2,193,302	89.6

UTAH COUNTY GROWTH INDICATORS

YEAR	ELEMENTARY AND SECONDARY		LABOR FORCE	ANNUAL UNEMPLOYMENT RATE	TOTAL FIRMS	WHOLESALE AND RETAIL FIRMS	NON-AG MONTHLY AVERAGE WAGE	PER CAPITA INCOME	JOB OPENINGS RECEIVED
	POPULATION JULY 1	SCHOOL ENROLLMENT							
1970	139,300	36,510	47,000	6.2	1,934	702	455	2,600	5,425
1975	166,000	40,072	61,300	6.3	2,572	866	653	3,700	9,578
1980	221,000	49,821	82,200	7.2	3,800	1,068	992	5,900	11,936
1985	251,000	61,178	92,631	6.6	4,208	1,244	1,210	7,946	11,037
1986	253,000	62,156	97,584	6.4	4,250	1,256	1,233	8,195	9,392
1987	257,000	63,150	99,154	5.9	4,261	1,269	NA	8,441	13,828

Source: UVEDA Databook, 1988

UTAH VALLEY EMPLOYMENT BY OCCUPATION 1987

<u>Occupation</u>	<u>Employed Persons</u>
Professional, Technical & Related	17,045
Nonfarm Managers & Administrators	8,300
Sales Workers	9,430
Clerical Workers	12,160
Craftsmen, Foremen & Related	14,696
Operatives, except Transportation	10,468
Transport Equipment Operatives	1,811
Nonfarm Laborers	4,369
Service Workers	12,248
Private Household Workers	511
Farm Workers	2,025
TOTAL	93,063

Source: UVEDA Databook, 1988

RACE AND SEX COMPOSITION OF EMPLOYED PERSONS
IN UTAH VALLEY LABOR MARKET
(1987)

<u>Race/Sex</u>	<u>Percent</u>
White (Non-Hispanic)	95.6
Black (Non-Hispanic)	0.1
Hispanic	2.3
Other	2.0
Male	59.2
Female	40.8

Source: UVEDA Databook, 1988

CONTENTS

ENROLLMENT

Headcount Enrollment, Fall Quarter 1988	29
Full-Time Equivalent Enrollment, Fall Quarter 1988	30
Geographic Origin of Students, United States, Fall 1988 (map)	31
Citizenship of Foreign Students, Fall 1988	32
Average Credit Hours Per Student, Fall Quarter 1988, (bar graph)	33
Enrollment History, Fall Quarters 1978-1988, (bar graph)	34
Resident/Non-Resident Headcount, Fall Quarters 1982-1988	35
Resident/Non-Resident Headcount, Fall Quarters 1982-1988 (bar graph)	36
Part-Time/Full-Time Headcount, Fall Quarters 1982-1988	37
Part-Time/Full-Time Student Headcount, Fall Quarters 1982-1988 (bar graph)	38
Headcount Distribution by Age, Fall Quarters 1982-1988	39
Mean Age of Students, Fall Quarters 1983-1988 (bar graph)	40
Headcount Distribution by Ethnic Group, Fall Quarters 1984-1988	41
Male/Female Student Headcount, Fall Quarters 1982-1988 (bar graph)	42
Headcount by Major Area of Study, Fall Quarters 1982-1988 (bar graph)	43
Average Credit Hours Per Student by School, Fall Quarters 1985-1988	44
Average Credit Hours Per Student, Fall Quarters 1982-1988 (bar graph)	45
Graduate Degrees & Certificates Awarded, 1987-88 and 1988-89 School Years	46
Enrollment Comparison of Utah Colleges/Universities, Fall 1988	47

HEADCOUNT ENROLLMENT Fall Quarter 1988

TOTAL HEADCOUNT 6833

Male	3779	55%		Freshmen	5021	73%
Female	3054	45%		Sophomores	1812	27%

Resident	6309	92%		Part-time	2800	41%
Non-resident	524	8%		Full-time	4033	59%

Vocational-Technical Majors	3720	54%
General Studies Majors	3113	46%

Average Age 24.4

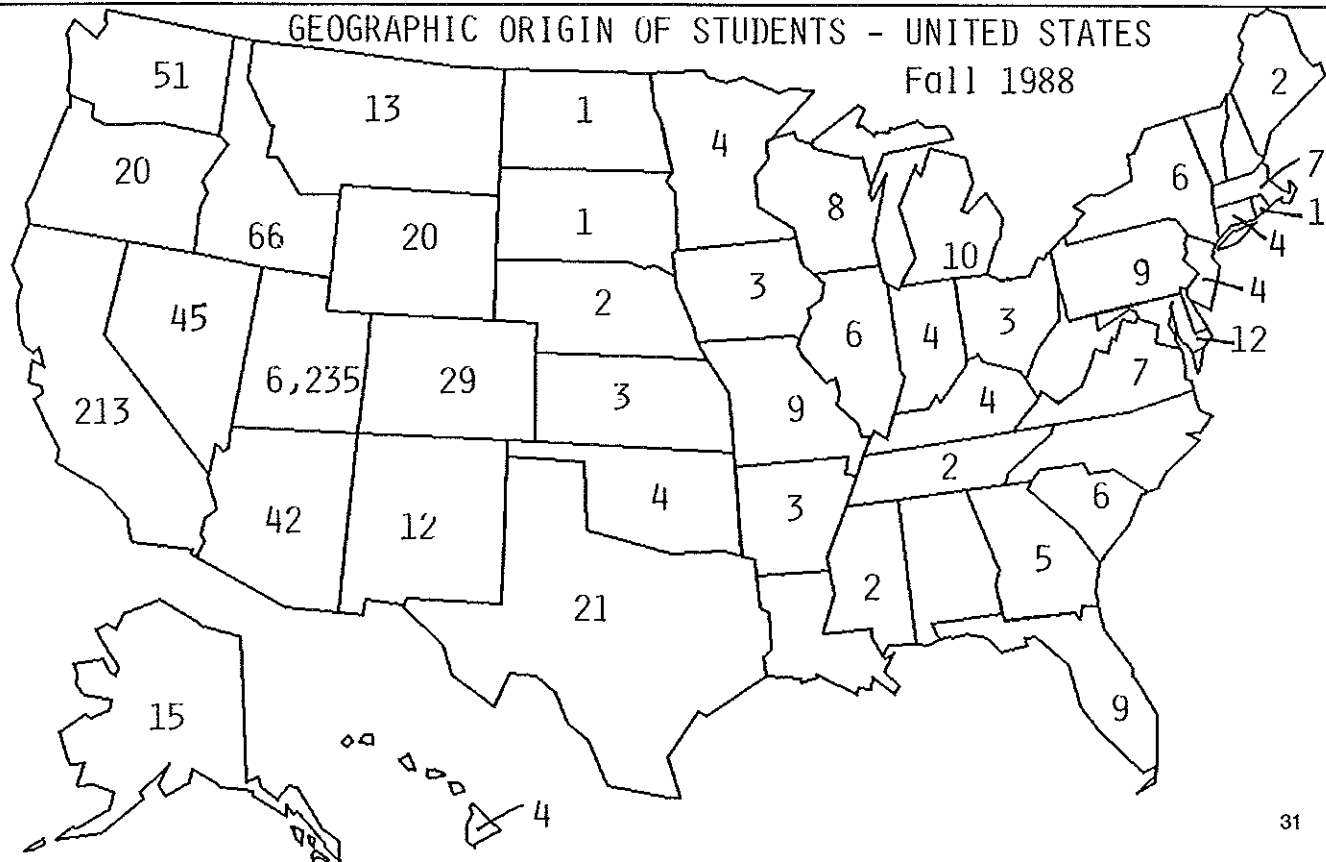
Source: Utah Valley Community College, Office of Institutional Research and Strategic Planning

FULL-TIME EQUIVALENT ENROLLMENT Fall Quarter 1988

TOTAL FULL-TIME EQUIVALENT (FTE)*	5319	
Vocational-Technical Majors	2873.3	54%
General Studies Majors	2445.7	46%
Residents	4877.0	92%
Non-residents	442.0	8%
Part-time	1296.0	24%
Full-time	4023.0	76%

*Full-time equivalent is the total number of credit hours in which students are enrolled divided by 15 (the credit hour load of a hypothetical "full-time" student).

GEOGRAPHIC ORIGIN OF STUDENTS - UNITED STATES
Fall 1988



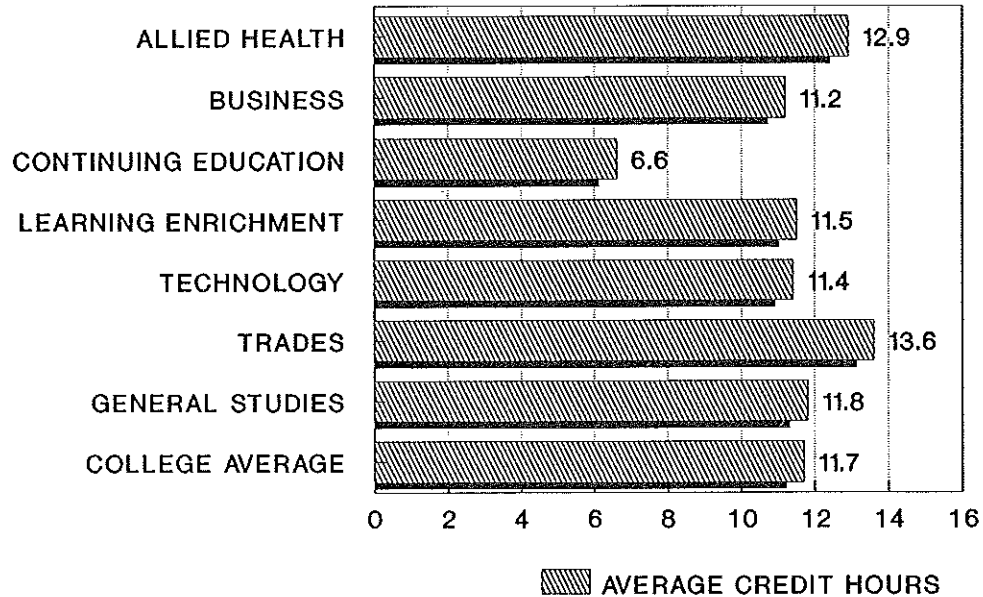
CITIZENSHIP OF FOREIGN STUDENTS

Fall 1988

Argentina	1	Austria	1
Belize	2	Bolivia	3
Brazil	10	Canada	25
People's Republic of China	2	Chile	4
Cameroon	3	Colombia	2
Denmark	1	Ecuador	2
England	3	France	8
Germany	1	Hong Kong	10
Indonesia	2	Iran	3
Italy	2	Japan	31
Jordan	2	Kenya	1
Korea	1	Mexico	7
New Caledonia	1	Netherlands	1
New Zealand	2	Paraguay	1
Peru	2	Pakistan	1
Poland	1	Panama	1
Portugal	2	Rwanda	2
South Africa	2	Sri Lanka	1
Spain	1	Sweden	2
Tahiti	1	Thailand	13
Taiwan	4	Uganda	1
Venezuela	2		

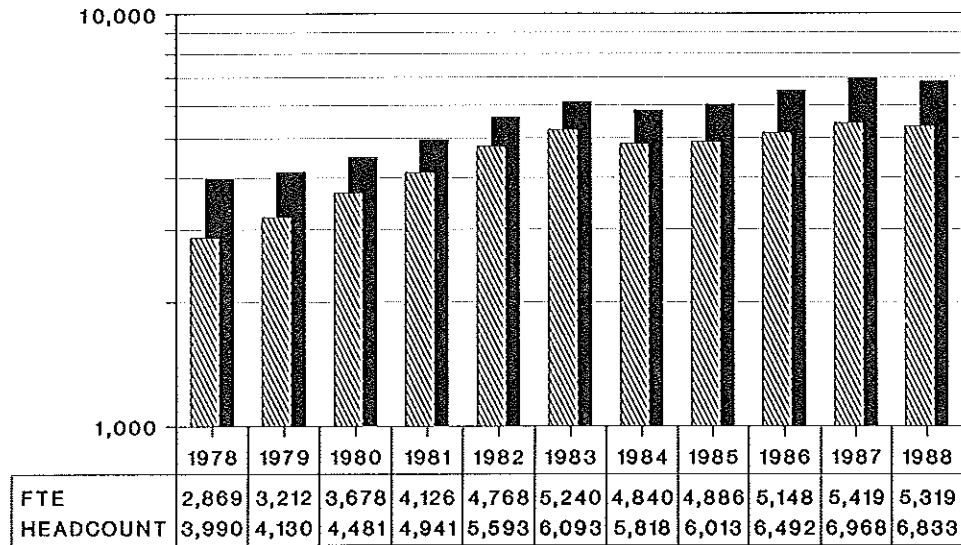
AVERAGE CREDIT HOURS PER STUDENT

Fall Quarter 1988



Source: Utah Valley Community College, Office of Institutional Research and Strategic Planning

ENROLLMENT HISTORY FALL QUARTERS 1978 - 1988



FTE
 HEADCOUNT

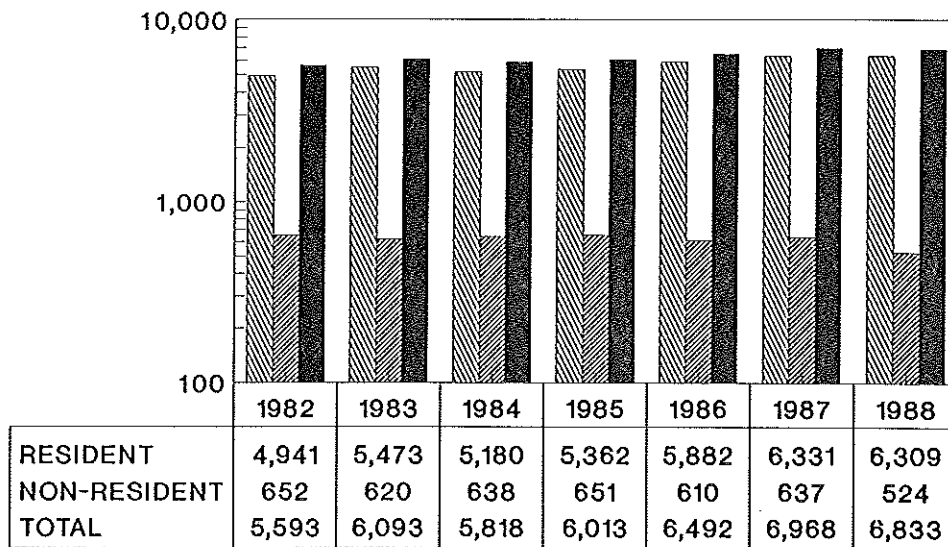
Source: Utah Valley Community College, Office of Institutional Research and Strategic Planning

RESIDENT/NON-RESIDENT HEADCOUNT - FALL QUARTERS 1982-1988

	<u>1982</u>	<u>1983</u>	<u>1984</u>	<u>1985</u>	<u>1986</u>	<u>1987</u>	<u>1988</u>
TOTAL	5,593	6,093	5,818	6,013	6,492	6,968	6,833
Resident	4,941	5,473	5,180	5,362	5,882	6,331	6,309
%	88	90	89	89	91	91	92
Utah County	4,065	4,510	4,204	4,405	NA	5,325	4,790
%	73	74	72	73		76	70
Salt Lake County	201	204	234	227	NA	255	274
%	4	3	4	4		4	4
Wasatch County	80	83	100	85	NA	90	96
%	1	1	2	1		1	1
Other County	595	676	642	645	NA	661	1,149
%	11	11	11	11		9	17
Non-resident	652	620	638	651	610	637	524
%	12	10	11	11	9	9	8
Other States	474	432	476	489	NA	506	433
%	8	7	8	8		7	6
Foreign	178	188	162	162	162	131	91
%	3	3	3	3	3	2	1

Source: Utah Valley Community College, Office of Institutional Research and Strategic Planning

RESIDENT/NON-RESIDENT STUDENT HEADCOUNT FALL QUARTERS 1982 - 1988



RESIDENT
 NON-RESIDENT
 TOTAL

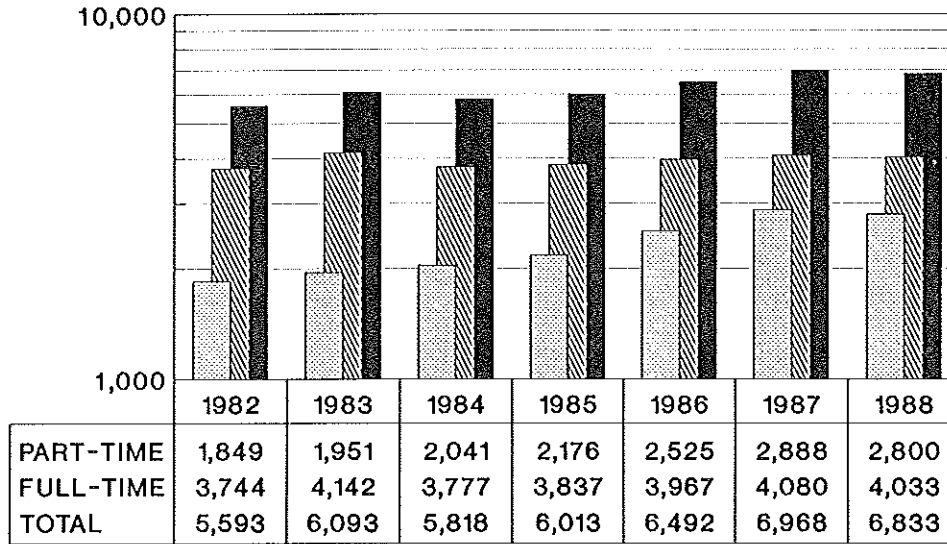
Source: Utah Valley Community College, Office of Institutional Research and Strategic Planning

PART-TIME/FULL-TIME HEADCOUNT - FALL QUARTERS 1982-1988

	<u>1982</u>	<u>1983</u>	<u>1984</u>	<u>1985</u>	<u>1986</u>	<u>1987</u>	<u>1988</u>
TOTAL	5,593	6,093	5,818	6,013	6,492	6,968	6,833
Part-time	1,849	1,951	2,041	2,176	2,525	2,888	2,800
< 7 hours	1,223	1,237	1,192	1,065	1,144	1,387	1,337
7 - 11 hours	626	714	849	1,111	1,381	1,501	1,463
Full-time	3,744	4,142	3,777	3,837	3,967	4,080	4,033
12 hours	302	327	361	511	545	556	604
13 hours	402	498	468	600	771	682	661
14 hours	285	336	354	468	473	423	442
15 hours	692	736	765	754	812	1,163	1,194
16 hours	495	508	365	378	366	372	320
17 hours	331	439	453	303	237	211	237
18 hours	414	461	431	321	341	268	246
19 hours	210	239	211	151	135	162	86
20 hours	415	392	202	183	146	135	141
> 20 hours	198	206	167	168	141	108	102

Source: Utah Valley Community College, Office of Institutional Research and Strategic Planning

PART-TIME/FULL-TIME STUDENT HEADCOUNT FALL QUARTERS 1982 - 1988



PART-TIME
 FULL-TIME
 TOTAL

Source: Utah Valley Community College, Office of Institutional Research and Strategic Planning

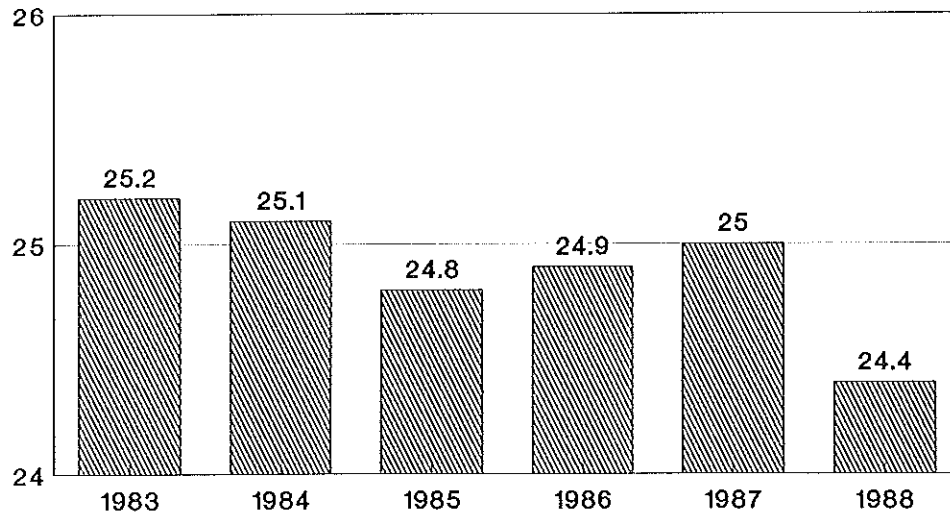
HEADCOUNT DISTRIBUTION BY AGE - FALL QUARTERS 1982-1988

	<u>1982</u>	<u>1983</u>	<u>1984</u>	<u>1985</u>	<u>1986</u>	<u>1987</u>	<u>1988</u>
TOTAL	5,593	6,093	5,818	6,013	6,492	6,968	6,833
Under 19 years	704	703	694	751	855	969	1,032
19-20 years	1,087	1,068	1,062	1,116	1,214	1,362	1,405
21-22 years	1,042	1,135	1,053	1,071	1,126	1,215	1,273
23-24 years	740	843	826	862	846	884	871
25-29 years	958	1,081	1,019	1,061	1,129	1,107	1,009
30-34 years	471	589	510	527	587	584	535
35-39 years	198	307	291	290	331	353	297
Over 39 years	393	366	363	334	382	4886	395
Unknown	0	1	0	1	22	6	16
Mean Age	NA	25.2	25.1	24.8	24.9	25.0	24.4

Source: Utah Valley Community College, Office of Institutional Research and Strategic Planning

MEAN AGE OF STUDENTS

Fall Quarters 1983 - 1988



 MEAN AGE

Source: Utah Valley Community College, Office of Institutional Research and Strategic Planning

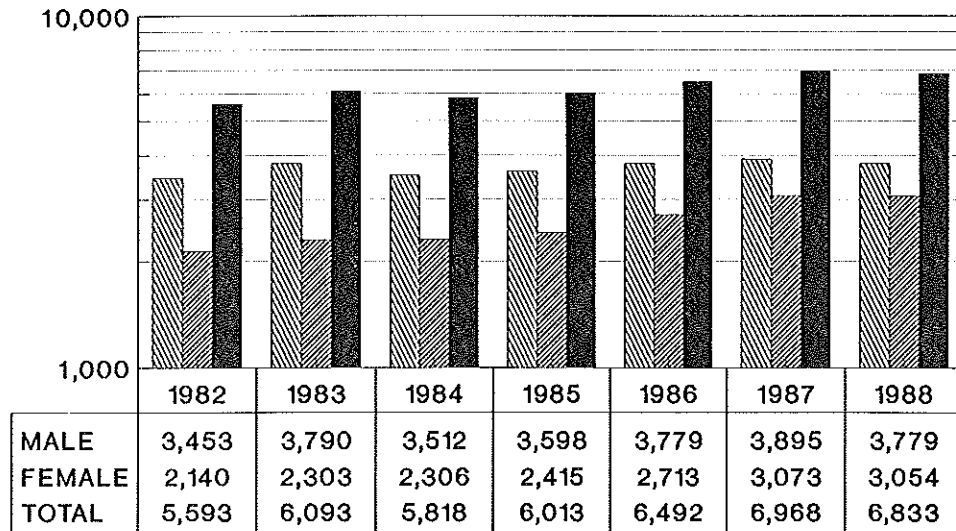
HEADCOUNT DISTRIBUTION BY ETHNIC GROUP

Fall Quarters 1984 - 1988

	<u>1984</u>	<u>1985</u>	<u>1986</u>	<u>1987</u>	<u>1988</u>
Total	5818	6013	6492	6968	6833
White	5327	5511	5934	6452	6341
Hispanic	117	139	138	142	122
Asian-Islander	121	107	118	110	90
American Indian	93	102	103	111	112
Black	12	5	5	6	9
Non-Resident Alien	148	149	194	147	159

Source: Utah Valley Community College, Office of Institutional Research and Strategic Planning

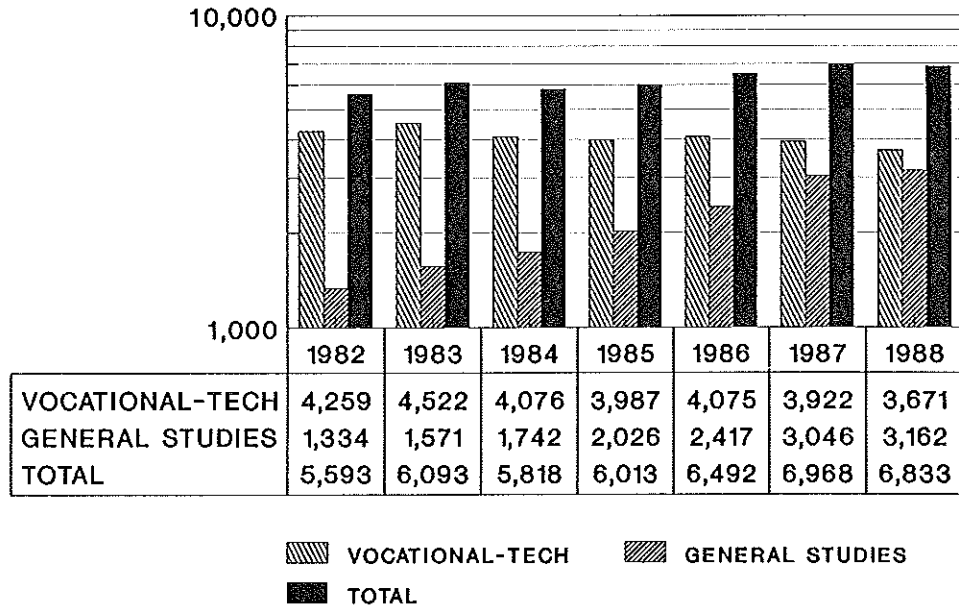
MALE/FEMALE STUDENT HEADCOUNT FALL QUARTERS 1982 - 1988



MALE
 FEMALE
 TOTAL

Source: Utah Valley Community College, Office of Institutional Research and Strategic Planning

HEADCOUNT BY MAJOR AREA OF STUDY Fall Quarters 1982 - 1988



Source: Utah Valley Community College, Office of Institutional Research and Strategic Planning

AVERAGE CREDIT HOURS PER STUDENT BY SCHOOL

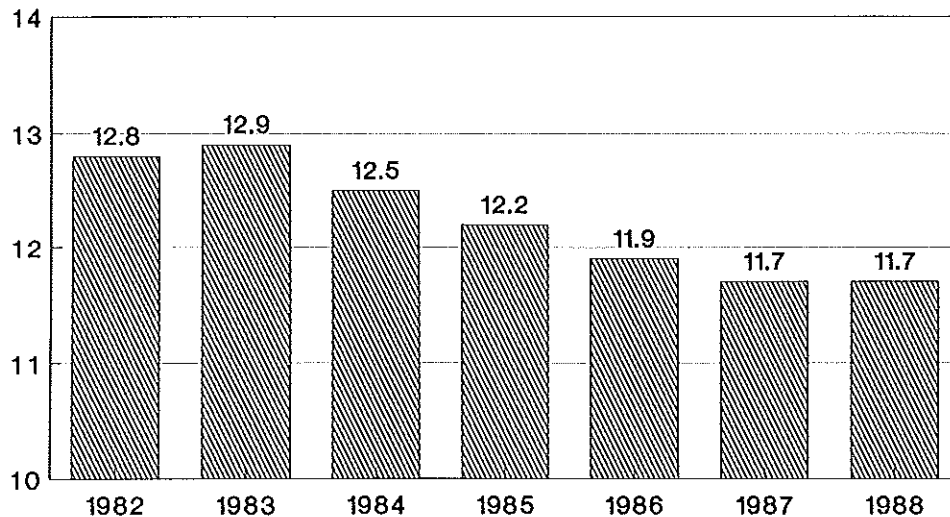
Fall Quarters 1985 - 1988

<u>SCHOOL OF</u>	<u>1985</u>	<u>1986</u>	<u>1987</u>	<u>1988</u>
Allied Health	13.4	12.9	12.6	12.9
Business	11.6	11.4	11.2	11.2
Continuing Education	6.3	6.8	6.2	6.6
General Studies	11.5	11.5	11.3	11.8
Learning Enrichment	13.0	12.5	12.0	11.5
Technology	14.5	13.7	13.7	11.4
Trades	15.2	13.3	13.2	13.6
<hr/>				
College Average	12.2	11.9	11.7	11.7

Source: Utah Valley Community College, Office of Institutional Research and Strategic Planning

AVERAGE CREDIT HOURS PER STUDENT

Fall Quarters 1982 - 1988



 CREDIT HOURS

Source: Utah Valley Community College, Office of Institutional Research and Strategic Planning

GRADUATE DEGREES & CERTIFICATES AWARDED
1987-1988 and 1988-1989 School Years

	<u>1987-88</u>	<u>1988-89</u>
Associate of Science	284	277
Associate of Arts	1	9
Associate in Applied Science	339	271
Diploma	108	97
One-Year Certificate	183	180
Two-Year Certificate	1	1
Two-Quarter Certificate	21	11
TOTAL	937	846

Source: Utah Valley Community College, Graduation Office

ENROLLMENT COMPARISON OF UTAH COLLEGES/UNIVERSITIES

FALL 1988

<u>University/College</u>	<u>Headcount</u>	<u>FTE</u>
University of Utah	24,046	18,574
Utah State University	14,236	10,086
Weber State University	12,730	9,077
Salt Lake Community College	9,048	5,806
Utah Valley Community College	6,833	5,319
Southern Utah State University	2,952	2,770
Dixie College	2,201	1,873
College of Eastern Utah	2,059	1,391
Snow College	1,544	1,421

Source: Utah Valley Community College, Office of Institutional Research and Strategic Planning

CONTENTS

FACULTY

Universities Represented by Doctorates of Contract Faculty, 1988-1989	48
Ethnic Distribution of Full-Time Faculty by Degree and Gender, 1988-1989	49
Age Distribution of Full-Time Faculty by Degree and Gender, 1988-1989	50

UNIVERSITIES REPRESENTED BY
DOCTORATES OF CONTRACT FACULTY

1988 - 1989

FACULTY

Edwards, Clyde
Greer, Dennis P.
Harris, James G.
Jenkins, Robert B.
Mecham, Harvey Dee
Nield, John
Oyler, Edward Dee
Richan, Frederic P.
Shumway, Del K.
Smith, Nancy M.
Staples, Sharon L.
Tayler, Paul L.
Thomason, Annette J.
Winter, Mark L.
Worthington, J. Karl

UNIVERSITY

Brigham Young University
Utah State University
University of Alberta Edmonton
Utah State University
Brigham Young University
Idaho State University
Brigham Young University
University of Northern Colorado
Washington University, St. Louis
Brigham Young University
University of Utah
University of Utah
Oklahoma State University
University of Utah
University of Iowa

**ETHNIC DISTRIBUTION OF FULL-TIME FACULTY
BY DEGREE AND GENDER**

1988 - 1989

	<u>American Indian Alask/Nat</u>	<u>Asian Pacific Islander</u>	<u>Black</u>	<u>Caucasian</u>	<u>Hispanic</u>	<u>Other</u>
Doctorate						
Male				12		
Female				3		
Masters						
Male		1		46		
Female				18		
Bachelors						
Male			1	30		
Female				14		
Associate						
Male				16		
Female						
Total Male		1	1	104		
Total Female				35		

Source: Utah Valley Community College, Personnel Office

**AGE DISTRIBUTION OF FULL-TIME FACULTY
BY DEGREE AND GENDER
1988 - 1989**

	<u>26-30</u>	<u>31-35</u>	<u>36-40</u>	<u>41-45</u>	<u>46-50</u>	<u>51-55</u>	<u>56-60</u>	<u>Over 60</u>
Doctorate								
Male		2			7	1	2	
Female			1		2			
Masters								
Male	1	2	6	8	13	11	4	2
Female		3	1	6	2	2	3	1
Bachelors								
Male	1	3	6	9	5	1	6	
Female		3	1	1	4	1	3	1
Associate								
Male		3	2	4	1	3	3	
Female								
Total	2	16	17	28	34	19	21	4

Source: Utah Valley Community College, Personnel Office

CONTENTS

SUPPORT

Scholarships and Waivers Through Financial Aid Office, 1987-88, 1988-89	51
Financial Aid Activity Report, 1988-1989	52
Grants and Contracts, 1986-87, 1987-88, 1988-89	53
Private Funding, 1986-87, 1987-88, 1988-89	55
Utah Valley Community College Foundation Board, 1988-1989	57
Utah Valley Community College Alumni Association Board of Directors, 1988-1989 . . .	58
Advisory Committees, 1988-1989, Accounting, Auto Mechanics, Building Construction, Business Management, Cabinet and Millwork	59
Advisory Committees, 1988-1989, Computer Information Systems, Collision Repair, Diesel and Heavy Duty Mechanics, Drafting and Design	60
Advisory Committees, 1988-1989, Early Childhood Development, Electronic Technology, Environmental Technology	61
Advisory Committees, 1988-1989, Fashion Merchandising, Fire Science, General Studies, General Vocational	62
Advisory Committees, 1988-1989, Graphics/Commercial Art, Hospitality Management, Human Services, Learning Enrichment, Lineman Training	63
Advisory Committees, 1988-1989, Legal Assistant, Machine Tool Technology, Physical Plant Management, Office Administration and Secretarial Technology . . .	64

CONTENTS

SUPPORT (Continued)

Advisory Committees, 1988-1989, Practical Nursing, Professional Driving, Refrigeration and Air Conditioning, Robotic Automation Systems Technology, Welding	65
Clubs and Organizations, AREC, Cheerleaders, Clube Portuguese, CCDC	66
Clubs and Organizations, Country Western Dance Club, DPMA, DEX, Drafting Club	67
Clubs and Organizations, German Club, Ham Radio, Karate, Lambda Delta Sigma	68
Clubs and Organizations, LDSSA, Law Society, PCDC, PBL	69
Clubs and Organizations, Rodeo Club, Sigma Gamma Chi, Ski Team, VICA	70
Library Patrons, Academic Years 1982-83 through 1988-89	71

SCHOLARSHIPS AND WAIVERS THROUGH FINANCIAL AID OFFICE

<u>Name</u>	<u>1987-1988</u>		<u>1988-1989</u>	
	<u>Number</u>	<u>Amount</u>	<u>Number</u>	<u>Amount</u>
Athletic Non-Resident Waiver	4	\$7,089	3	\$8,396
Athletic Scholarship	49	\$12,634	44	\$8,422
Athletic Waivers	63	\$28,820	60	\$34,852
Continuing Student Waivers	190	\$90,594	154	\$73,806
Crouch Auto Mechanic Scholarships	1	\$1,510	2	\$6,000
Department Discretionary Waiver			70	\$19,526
First-time Student Waivers	140	\$82,927	145	\$91,210
Governor's Craftsmen Waivers	22	\$12,706	18	\$10,565
Gunther Scholarship	6	\$1,476	1	\$693
Institutional Discretionary Scholarship	7	\$2,180	5	\$2,110
LPN Scholarship	4	\$874	4	\$1,316
Miscellaneous Scholarship	2	\$513	4	\$2,150
Non-Resident Miscellaneous Waiver	2	\$1,427	1	\$100
PG Health Scholarship	3	\$1,375	2	\$938
Pearson Trust Scholarship	32	\$9,759	26	\$8,438
Resident Miscellaneous Waivers	15	\$7,080	5	\$2,619
Student Act. Waivers	33	\$15,694	32	\$16,643
Studentbody Scholarship	20	\$3,626	5	\$1,381
Utah Career Teaching Scholarship	4	\$3,886	7	\$8,856
TOTAL	592	\$284,170	588	\$298,021

Source: Utah Valley Community College, Financial Aid Office

FINANCIAL AID ACTIVITY REPORT 1988 - 1989

	<u>NUMBER OF STUDENTS</u>	<u>AMOUNT</u>	<u>% OF TOTAL</u>
<u>GRANTS</u>			
Pell	2,079	\$2,596,407	52%
SEOG	231	115,356	2%
SSIG	136	84,578	2%
<u>LOANS</u>			
Perkins	111	155,703	3%
Stafford	629	1,275,516	26%
Short-Term	1,081	288,542	6%
SLS	9	33,290	1%
PLUS	4	11,218	0%
<u>SCHOLARSHIPS</u>			
State Waivers	546	271,780	5%
Private Scholarships	35	17,385	0%
<u>EMPLOYMENT</u>			
College Work-Study	126	126,455	3%
Hourly, Part-Time		NA	
TOTAL	4,987	\$4,976,230	100%

Source: Utah Valley Community College, Office of Financial Aids

GRANTS AND CONTRACTS

	<u>1986-87</u>	<u>1987-88</u>	<u>1988-89</u>
Academic Facilities		\$ 94,920	
Adult Training	\$ 79,000		
Adult IIB		90,000	
Business/Industry		44,960	
CETSEG/STIT			\$123,466
Continuing Education			3,000
Co-op Supplemental	13,847	6,076	20,000
Co-op Title VIII Demo Grant	165,295	175,168	171,291
Disadvantaged		206,604	196,024
Displaced Homemaker		15,642	12,703
Economic Development	12,000		
Energy Conservation	40,000		
Environmental Technology	40,000		31,000
Equipment	99,157	123,601	19,150
Fire Science Training	75,000	70,000	70,000
FIPSE/Accounting		25,000	
FIPSE/Electornics		84,720	
General Equity			28,000
General Studies/Band Instruments			18,000
Guidance/Placement		42,000	29,979

UTAH VALLEY COMMUNITY COLLEGE FOUNDATION BOARD

1988 - 1989

	Business:	Merrill Lynch
G. William Aaron		Business Consultant
* Bill J. Anderson		Squire & Company
* Ray Bartholomew		Bonneville Bank
Roger Bjarnson		Geneva Rock
Louise Clyde		Geneva Rock
* Wilford W. Clyde		Horne Lodging Properties
Doug Horne		Jones Paint & Glass
Merlynn K. Jones		First Security Bank
Jeffrey Kahn		Business Consultant
* James B. Lindahl		Daily Herald
Renee Nelson		SCERA
* Norman Nielsen		Heritage Schools
Glen A. Overton		Central Bank & Trust
David K. Palfreyman		Retired business woman
Florence Ragan		Business Consultant
C. Dee Sandgren		UVCC President Emeritus
Wilson W. Sorensen		Word Perfect, Hard Disk Cafe
Maria Vargas		Wing Enterprises
* Harold R. Wing		
* Member Executive Committee		

Source: Utah Valley Community College, Development Office

UTAH VALLEY COMMUNITY COLLEGE
ALUMNI ASSOCIATION BOARD OF DIRECTORS

1988 - 1989

Anagene Meecham Cottrell

Brent J. DeMille

Ben K. Gould, Jr.

David D. Halladay

Scott P. Hancock

Randy J. Kester

Polly Weenig

George Marshall

Provo City Council

Mansell & Associates Realty

Novell, Inc.

First Security Bank

Scott Hancock Studio

Attorney at Law

UVCC - Registration Office

Student - Utah State University

ADVISORY COMMITTEES

1988 - 1989

Accounting

Joe Squire - Chairman
Lois Anderson
Steve Densley
Diane Hicken
E. Dee Hubbard
Gene Hughes
Joseph Raynes
C. Joseph Rowberry
Mercedes Smith
Lewis Tippets
Kelley Ward
Karen Anderson
Ben Bean
Dean Cluff
Dennis Greer
Robert Jenkins
Annette Thomason

Auto Mechanics

Chris Bassett
Art Bowman
Melvin Ferguson
Steve Frandsen
Miles Morris
Alvin Washburn

Building Construction

Cont Jones
Gordon Dawe
Robert Hansen
Dave Hardy
Jay Sisson
Karl Stum

Business Management

William Anderson
Ladd Black
Mac Boyer
Kelly Liljenquist
Brad Mortensen
Ron Tiffany

Cabinet and Millwork

David Barlow
Richard Fetzter
Lloyd Hone
Markay Johnson

ADVISORY COMMITTEES

1988 - 1989

(continued)

Computer Information Systems

Richard Hodson, Chairman
Lois Anderson
Alan Ashton
Elaine Bonham
Richard Bradford
Steve Carter
Alan Dixon
Lee Murdock
Brett Parkinson
Joseph Raynes
Norm Wright
Robert Harrington
Robert Jenkins
Larry Johnson
Pat Ormond
Elizabeth Valencia
Annette Thomason

Collision Repair

Lee Mackey, Chairman
Lee Bellows
Ralph Chidester
Robin Roberts
Steve Whitlock

Diesel and Heavy Duty Mechanics

John Crandall
Fred Fairbanks
Albert Harmer
Art Johnson
Don Jones
Brent Mickelsen

Drafting and Design

Jerry Barker
Wayne Hillier
Bryan Jacobsen
Dan Olsen
Eric Sandstrom
Jerry Sermersheim
Mary Valerio
Alan York

ADVISORY COMMITTEES

1988 - 1989

(continued)

Early Childhood Development

Ruby Anderson
Paul Buckingham
Janet Geary
Marleen Hirschi
Ronilynn Jenkins
Ginger Lewis
Ireta Midgley
Mary Olsen
Diane Pace
Anita Spainhower
Wendy Turley
Cheryl Wright

Electronic Technology

Bill Gillman, Chairman
Tony Coates
John Greenhalgh
Mark Hoyt
Stephen Jeppson
Gary Maag
Dick Morrell
Richard Ohran
David Owen
Peter Underlin
A. Parker Wood
Paula Hardman

Environmental Technology

Gordon Beals
Travis Black
Brent Bradford
Carol Kotler
Willard Devault
Dennis Downs
David Gunn
Chris Horting
Charles Jeffs
Garland Mayne
Jay Pitkin
Judy Sims
Merlin Smith
Gayle Smith
Neil Taylor

ADVISORY COMMITTEES

1988 - 1989

(continued)

Fashion Merchandising

Diane Downs
Gail Ellsworth
Jana Linnell
Ron Sumner
Julie Wiscomber

General Studies

Phil Allsen
Don Carpenter
D. Russell Crane
Avery Glenn
Nancy Heuston
J.R. Kearl
Ivan Muse
Harold Smith
Karen Thorn

Fire Science

Ralph Anderson
Dave Bentley
Lynn Borg
J. Steve Dunaway
William Feeney
Lorayne Frank
Andrew Glad
D. Pete Hansen
Larry Hinman
Max Lowe
John Nielsen
Peter Pederson
John Shield
Grant Walker

General Vocational

Lois Ashby
Elaine Bonham
Lee Christensen
Rodney Crockett, Chairman
Bill Fisher
Flora Green
Brian Schiller
Lucille Stoddard
Ron Tiffany
Ken Walker

ADVISORY COMMITTEES

1988 - 1989

(continued)

Graphics/Commercial Art

Stephen Adams
Doug Anderson
Jeff Bell
Steve Bushman
Jeff Colyar
Bob DeWitt
Larry Esmay
Dave Harmon
Wayne Harwood
Lisa Hatch
Larry Holt
Steve Keele
Janel Mitchell
Levor Oldham
Carrol Reid
Chuck Revill
Karren Turner
Bevin Wulfenstein

Hospitality Management

Jerry Anderson
Owen Black
Sam Brooks
Jim Ferguson
Max Fillmore
John Warner

Human Services

Jay Bawden
Al Carlisle
Lloyd Evans
Brian Miller
Daile Pikus
Dick Urban

Learning Enrichment

Rod Barlow
Anagene Mecham Cottrell
Karin Swendsen
Joseph Raynes
Jack White

Lineman Training

Dean Cordus
Doug Gadd
Carl Jones
Rick Marchal
Lyle Powell
Glen Spivey
Brent Thomas

ADVISORY COMMITTEES

1988 - 1989

(continued)

Legal Assistant

Renee Allan
Billie Casper
Maxine Christensen
Rama Chamberlain
Carol Elggren
Laurie Hart
Byron Harward
Stuart Hinckley
William Huish
Joseph Raynes
Peter Reynolds
Hugh Rode
David Sam
Brent Scott
Marie Smith
Claude Zobell

Machine Tool Technology

Steve Allred
Duane Carrier
Rod Merrell
Evan Mitchell
Lee Morris
Vard Roper

Physical Plant Management

Lynn Brough
Marshall Leach
Phil Lott
Don Underwood
Mark Woods

Office Administration and Secretarial Technology

Lisa Circiako
Jody Gonzales
Dawn Hales
Norma Nelson
Mike Lamkin
Donna Payne
Nancy Sanchez
Bob Wood
Oris Boan
Dorothy Farnworth
Rob Metcalf
Toni Sullivan
Lorena Aiken
Melody Downey
Lois Anderson
Kay Peterson
Jolene Succo

ADVISORY COMMITTEES

1988 - 1989

(continued)

Practical Nursing

Linda Barlow
John Bramall
Marie Hamilton
Vicki Johnson
Lane Pederson
Linda Tulimafua
Guy Thompson
Linda Walton

Professional Driving

Dick Allen
Wayne Cedarholme
Paul Garrett
Ted Lockhart
Robert Morrey
Lee Porter
Marlon Snow

Refrigeration and Air Conditioning

Gaylen Atkinson
Richard Carman
Thoral Collings
Steve Fordham
Dean Gunther

Robotic Automation Systems Technology

O. Dewey Bennett
Richard Bogus
Bernard Cope
Howard Eves
Boyd Miner
Rulon Wells

Welding

Nile Christofferson
Duane Corrier
Wallace Hamblin
Kevin Kessler
Max Knight
Ron Noyes
Robert Patch
Robert Max Walker

CLUBS AND ORGANIZATIONS

AREC The Adaptive Recreation Education Club offers all types of recreational and educational activities, adapted to suit the needs of the physically challenged. Some activities are: skiing, camping, and scuba diving.

Advisor: Christa Jensen.

CHEERLEADERS

Cheerleaders are a branch of the student government with the specific purpose to promote and increase school spirit and unity.

Advisor: Kristen Anderson

CLUBE PORTUGUESE

Members participate in activities and cultural experiences related to the Spanish and Portuguese languages.

Advisor: Karen D'Andrea

CCDC Community College Deaf Club promotes deaf awareness and a positive interaction between the school and the student. Membership is open to those interested in or already capable of using sign language as well as those who are deaf.

Advisor: Elaine Smiley

CLUBS AND ORGANIZATIONS

(continued)

COUNTRY WESTERN DANCE CLUB

This club offers members the opportunity to update dance skills, create new dance steps and meet people who share an interest in country dancing.

Advisor: D.J. Smith

DPMA

The Data Processing Management Information Club is for those interested in computers and pursuing a career in data processing. Members participate in a national programming contest.

Advisor: Bob Harrington

DEX

Delta Epsilon Chi, better known as DECA, centers around professional activities such as marketing, management, merchandising and hospitality.

Advisor: Mike McNall

DRAFTING CLUB

This club promotes professional activities and social contact within the drafting departments of other schools and professionals in the field. Activities include tours to local companies and guest speakers.

Advisor: Bart Lynn

CLUBS AND ORGANIZATIONS

(continued)

GERMAN CLUB

Cultural activities related to the German language are sponsored for those who speak German or wish to learn.

Advisor: Rudy Lehnhardt

HAM RADIO

Complete amateur radio facilities are available to club members. Members participate in rescue missions and relaying public information locally and throughout the world.

Advisor: Rod Kendall

KARATE

The main purpose of this club is to learn the mental, physical and spiritual aspects of Kenpo Karate. Karate tournaments are sponsored throughout the year.

Advisor: Doug Anderson

LAMBDA DELTA SIGMA

This sorority, sponsored by the LDS Church, is available to strengthen women, allow them to have influence in student affairs, render campus and community services, enjoy wholesome social activities and build lasting bonds.

Advisor: Gerrie Bills

CLUBS AND ORGANIZATIONS

(continued)

LDSSA The goal of the Latter-day Saint Student Association is to bring students unto Christ through student participation with religious education and student activities which include community service, dances, choir and many other events.

Advisor: Dave Litchford

LAW SOCIETY

Members learn about law through activities, seminars and working with those already established in the field of law.

Advisor: Sheila Underwood

PCDC The Personal and Career Development Club for non-traditional students will provide socialization, networking and help in building self-esteem. It is especially designed to help students become emotionally and economically self-sufficient and provide a safe environment for growth and learning.

Advisor: Anita Musto

PBL Phi Beta Lambda's purpose is to bring business and education together in a positive working relationship by promoting competition, developing character, teaching leadership and achieving self-confidence.

Advisor: Colleen Vawdrey

CLUBS AND ORGANIZATIONS

(continued)

RODEO CLUB Club members compete in college rodeos throughout Utah and Idaho and also participate in other rodeo activities.

Advisor: Russ Black

SIGMA GAMMA CHI

This fraternity is sponsored by the LDS Church to promote leadership, scholarship, spirituality, service, patriotism and brotherhood.

Advisor: Wes Bitters

SKI TEAM

The ski team provides students the opportunity to ski competitively. Current competitors are Weber State, University of Utah, Utah State and Montana State.

Advisor: Bart Jacobs

VICA

Vocational Industrial Clubs of America is for all trade, industrial, technical and health students. An emphasis is placed on dignity of work, education, fair play and high moral and spiritual standards.

Advisor: Ken Ewell

LIBRARY PATRONS

Academic Years 1982-83 through 1988-89

	<u>1982-83</u>	<u>1983-84</u>	<u>1984-85</u>	<u>1985-86</u>	<u>1986-87</u>	<u>1987-88</u>	<u>1988-89</u>
Patrons (counted 10:30 a.m.)	18,741	19,992	19,791	20,459	23,012	25,635	27,288
Materials Checked Out	5,028	5,269	4,474	5,953	7,398	9,019	11,758
Reshelled	8,991	9,159	11,336	12,672	14,786	16,708	18,223

Source: Utah Valley Community College, Library

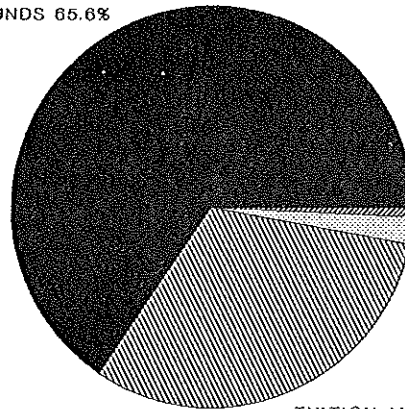
CONTENTS

BUDGET AND FINANCE

Education and General Revenue Sources, 1989-1990 (pie chart)	72
Education and General Operating Funds Use Expenditure Category, 1989-90 (pie chart)	73
Ten Year History of Education and General Operating Budgets and Appropriations, 1979-80 through 1988-89	74
Ten Year History--Education and General Operating Budget and Appropriation 1979-80 through 1988-89 (bar graph)	75
Ten Year History of State Appropriation Per FTE, 1979-80 through 1988-89	76
Fuel and Power Expenditures, 1983-84 through 1988-89, 1989-90 budgeted (bar graph)	77

EDUCATION AND GENERAL REVENUE SOURCES 1989 - 1990

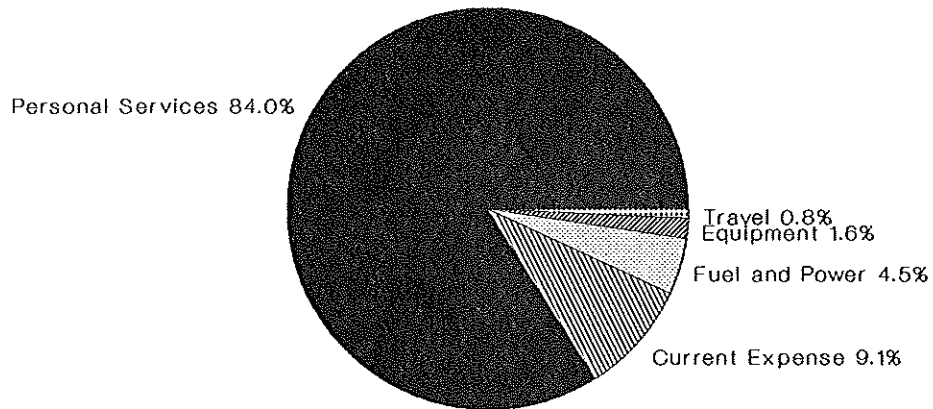
STATE GENERAL FUNDS 65.6%



OTHER 0.7%
MINERAL LEASE 2.2%

TUITION AND FEES 31.5%

EDUCATION & GENERAL OPERATING FUNDS USE EXPENDITURE CATEGORY 1989-90



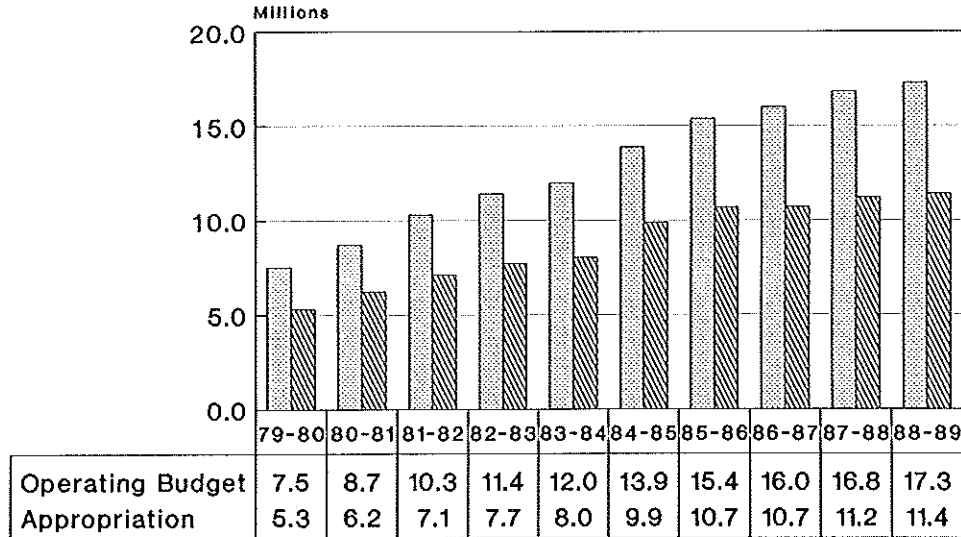
Source: Utah Valley Community College, Budget Office

TEN YEAR HISTORY OF EDUCATION AND GENERAL OPERATING BUDGETS AND APPROPRIATIONS

<u>Year</u>	<u>Total Budget</u>	<u>Amount Appropriated</u>	<u>Percentage</u>
1979-80	\$7,462,800	\$5,346,500	72.85%
1980-81	\$8,656,400	\$6,206,500	71.70%
1981-82	\$10,281,200	\$7,054,100	68.61%
1982-83	\$11,377,500	\$7,671,400	67.43%
1983-84	\$12,021,700	\$7,997,700	66.53%
1984-85	\$13,854,100	\$9,963,500	71.92%
1985-86	\$15,400,281	\$10,723,475	69.63%
1986-87	\$15,967,752	\$10,716,500	67.11%
1987-88	\$16,796,426	\$11,162,400	66.46%
1988-89	\$17,268,400	\$11,449,800	66.30%

Source: Utah Valley Community College, Budget Office
Excludes supplementals and one-time reductions

TEN YEAR HISTORY-EDUCATION AND GENERAL OPERATING BUDGET AND APPROPRIATION



Operating Budget
 Appropriation

Source: Utah Valley Community College, Budget Office

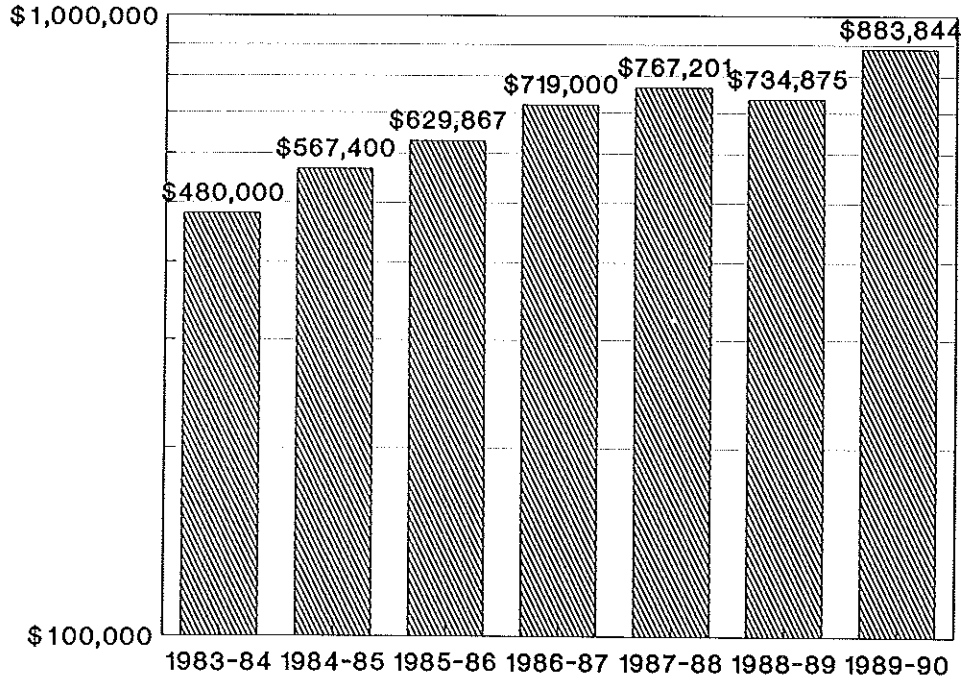
TEN YEAR HISTORY OF STATE APPROPRIATION PER FTE*

<u>Year</u>	<u>State Appropriation</u>	<u>Annualized FTE</u>	<u>Appropriation Per FTE</u>
1979-80	\$5,346,500	3,250	\$1,645
1980-81	\$6,206,500	3,840	\$1,616
1981-82	\$7,054,100	4,349	\$1,622
1982-83	\$7,671,400	5,035	\$1,524
1983-84	\$7,997,700	5,272	\$1,517
1984-85	\$9,963,500	4,947	\$2,014
1985-86	\$10,723,475	4,899	\$2,189
1986-87	\$10,716,500	5,206	\$2,058
1987-88	\$11,162,400	5,302	\$2,105
1988-89	\$11,449,800	5,329	\$2,149

*FTE = Full-time equivalent

Source: Utah Valley Community College, Budget Office

FUEL AND POWER EXPENDITURES



Source: Utah Valley Community College, Budget Office

Budgeted

CONTENTS

PHYSICAL FACILITIES

Physical Facilities, Building, Net Square Feet	78
Physical Facilities, Type of Space, Net Square Feet	79
Age of Physical Facilities, Placed in Service, Square Footage	80
Age of Physical Facilities, Placed in Service, Square Footage, 1950-1959, 1960-1969, 1970-1979, 1980-1988 (bar graph)	81

PHYSICAL FACILITIES

<u>Building</u>	<u>Net Square Feet</u>
Activity Center	35,927
Administration	52,659
Assessment Center (Trailer)	1,718
Auto Trades	92,450
Business Building	59,214
Business Concourse	8,400
Engineering (Trailer)	1,342
Environmental Lab	6,971
Learning Resource Center	56,496
Pioneer House	1,257
Planning Center	1,690
Provo Campus	157,346
Student Center	49,807
Trades	133,719
Other Buildings	13,605
Total Net Square Feet*	672,601

*SQUARE FOOTAGE FIGURES ARE APPROXIMATE

Source: Utah Valley Community College, Office of Institutional Research and Strategic Planning

PHYSICAL FACILITIES

<u>Type of Space</u>	<u>Net Square Feet</u>
Classrooms	60,358
Classroom Laboratories	186,285
Other Laboratories	33,899
Offices/Conference Rooms	80,338
Study/Library Facilities	12,345
General Use Facilities	84,889
Physical Education Facilities	23,997
Special Use Facilities	4,335
Restrooms	12,067
Circulation Area	135,685
Custodial Area	2,008
Mechanical Area	36,395
Total Net Square Feet*	672,601

*SQUARE FOOTAGE FIGURES ARE APPROXIMATE

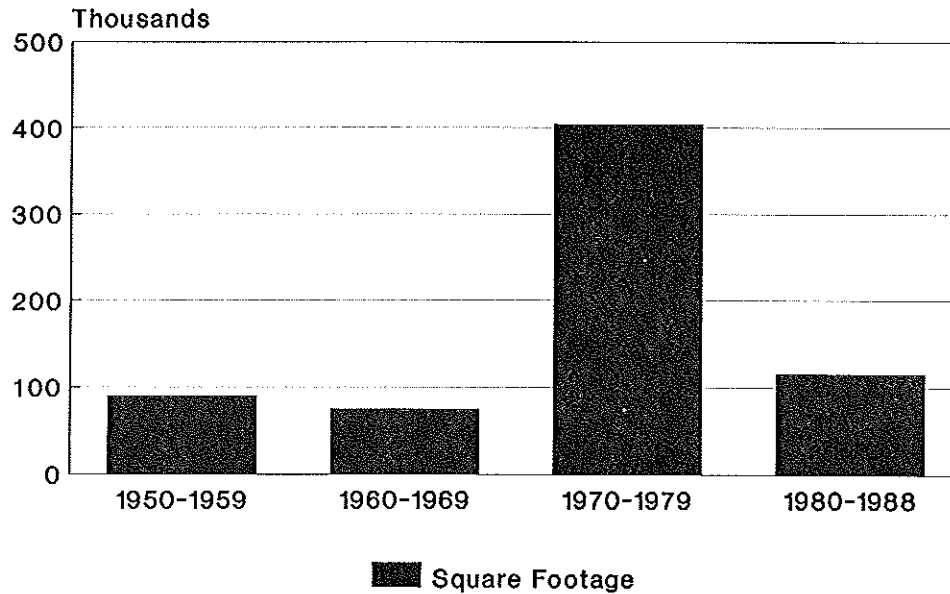
Source: Utah Valley Community College, Office of Institutional Research and Strategic Planning

AGE OF PHYSICAL FACILITIES

<u>Placed in Service</u>	<u>Square Footage</u>
1950-1959	89,393
1960-1969	74,800
1970-1979	404,275
1980-1988	<u>115,202</u>
Total Square Footage	686,670

Source: Utah Valley Community College, Institutional Research and Strategic Planning

AGE OF PHYSICAL FACILITIES Placed in Service



Source: Utah Valley Community College, Office of Institutional Research and Strategic Planning