



1999-2000

Fact Book

PREFACE

*This **FACT BOOK** is an annual publication of Utah Valley State College and the Office of Institutional Research and Management Studies. The purpose of the **FACT BOOK** is to translate accumulated data into useful information to those within and outside our college environment.*

*Every effort has been made to include within this publication the data most often requested. A decision had to be made early in the development of the **FACT BOOK** to limit the published data. We invite the users of this book to freely comment on what data they would like to have included in the future. Please contact our office, (801) 764-7923, with your comments.*

The Office of Institutional Research and Management Studies wishes to thank the individuals and departments who have contributed to this publication.

*Office of Institutional Research
and Management Studies*

UTAH VALLEY STATE COLLEGE
FACT BOOK
1999-00 DATA
TABLE OF CONTENTS

GENERAL INFORMATION	1
ADMINISTRATION	27
FACULTY	29
ENROLLMENT	38
STUDENT PROFILE	55
SUPPORT ORGANIZATIONS	68
FINANCE	81
FACILITIES	96
INDEX/GLOSSARY	99
MAP OF COLLEGE CAMPUS	back cover

CONTENTS

GENERAL INFORMATION

Institutional Mission	1
History of Utah Valley State College	2
College Calendar, 1999 Fall Semester	7
College Calendar, 2000 Spring Semester	8
College Calendar, 2000 Summer Semester	9
College Presidents	11
College Name Changes	11
Utah State Board of Regents	12
Utah State Board of Regents Chairs	13
Utah Commissioners of Higher Education	13
Utah State Board for Vocational Education Chairs	14
Utah System of Higher Education	15
Tuition and Student Fees	16
Student Body Presidents	17
Teacher of the Year	20
Employee Awards	21
Athletics, Final Records and Conference Finishes	22
Honorary Degree Recipients	23
Utah Valley Population	25
Employment in Utah County by Type	26

INSTITUTIONAL MISSION

Utah Valley State College is a state college comprised of two interdependent divisions. The lower division embraces and preserves the philosophy and mission of a comprehensive community college, while the upper division consists of programs leading to baccalaureate degrees in areas of high community demand and interest.

Utah Valley State College is dedicated to providing a broad range of quality academic, vocational, technical, cultural, and social opportunities and experiences designed to encourage and assist students in attaining their goals and realizing their talents and potential, personally and professionally. The College is committed to meeting student and community lower division and upper division needs for occupational training; providing developmental, general, and transfer education; meeting the needs for continuing education for personal enrichment and career enhancement; and providing diverse social, cultural, and international opportunities, and student support services.

HISTORY OF UTAH VALLEY STATE COLLEGE

Utah Valley State College, Orem, is situated in the heart of Utah County. Nestled beneath mountains on all sides, the name Utah Valley has become synonymous with Utah County and is used interchangeably throughout the state. With a population of more than 263,000 it is the second largest county in the State and includes twenty incorporated cities. The College serves primarily the Mountainlands District of students with Utah County residents comprising 60 percent of its enrollment.

*The College was established when the Utah State Legislature passed an appropriation of \$100,000 for the biennium of 1936-38 for vocational education. Central Utah residents who had been supported by government funding, wanted to upgrade their skills in order to obtain better jobs and many enrolled in vocational classes administered by the school districts. However, the school districts were not able to give adequate supervision to organize, conduct, coordinate, and supervise adult programs, and in the spring of 1938, **Hyrum E. Johnson** of Provo was appointed supervisor of vocational education for Utah and Heber Valleys.*

*In the fall of 1941 the scattered classes throughout the two valleys were moved to a central location in south Provo and the Fairgrounds Campus was enthusiastically welcomed by the staff and students. Provo School District assumed the financial supervision of the new school and both federal and state monies flowed through the District to the school. It became imperative that the school have proper identification and the name **Central Utah Vocational School** was selected. With the advent of World War II, most of the school's operating budget came from federal government funds for war production training.*

*The birth of the school as a state institution was March 15, 1945, when Governor Herbert B. Maw signed a bill appropriating \$50,000 to operate for the biennium of 1945-47. A second bill was introduced and adopted in 1947 making the school a permanent state institution without any cut-off date. In 1946 **Wilson W. Sorensen** was appointed director of the school by the Utah State Board for Vocational Education and was the chief executive officer until June 1982.*

In 1948 a new site, located between 1200 and 1400 North on 150 East in Provo, was obtained. The site was purchased by the four school districts (Alpine, Nebo, Provo and Wasatch) as well as Provo City and Utah County, with the understanding, if the property were given to the school, the state would appropriate the money for buildings. The location of the campus was considered ideal because of accessibility to students from Provo High School, the Vocational School, or Brigham Young University.

*In March 1953 the name of the school was changed from Central Utah Vocational School to **Utah Trade Technical Institute**. In March 1967 the name was again changed, this time to **Utah Technical College at Provo**. In February 1966 the Utah State Board for Vocational Education approved granting Associate of Applied Science Degrees and on July 14, 1967, the State Board approved offering general education courses. In August of 1971 the Associate of Science Degree was approved.*

Enrollment growth became so immense the Provo Campus was no longer adequate and a search for a new site was begun. Several locations in Provo and Orem were reviewed and a decision was made to purchase 185 acres in southwest Orem. This location was chosen because of its landscape, excellent traffic flow, and accessibility. The business education building, student center, heating plant, and auto trades building were occupied at the beginning of the 1976-77 school year.

In 1974 the Associate of Science Degree was discontinued, but approval was given by the Board of Regents to again award the degree in December 1980. In 1981 the Legislature approved granting an Associate of Science Degree in general education on a three-year probationary basis with permanent approval in 1985.

*On June 1, 1982, Wilson W. Sorensen retired as President and **Dr. J. Marvin Higbee** was selected by the Board of Regents as the new President.*

Since the move to the Orem Campus the College continued to grow with a trades building, learning resource center, athletic center and administration building added. As classes and service facilities were moved from Provo to Orem the vacated areas were filled by new programs, thus maintaining a split campus. A new science building was occupied in fall 1989. An extensive addition to the Learning Resource building was completed for use in 1992.

Beginning fall quarter 1985 articulation was completed with Weber State College to offer a four-year bachelor's degree in electronic technology while students continue their advanced courses on this campus. In winter quarter 1987 the same opportunity was offered students in the computer information systems program.

*In 1987 the legislature approved a name change better reflecting the location and mission of the College--**Utah Valley Community College.***

*In October 1987 Dr. J. Marvin Higbee resigned as President and **Dr. Lucille T. Stoddard** was appointed Acting President until a new chief executive officer was selected.*

***Dr. Kerry D. Romesburg** was appointed President of Utah Valley Community College on July 17, 1988.*

The Associate of Arts Degree was approved by the Board of Regents in 1987 and in 1989 the Regents and State Legislature approved funding for the Associate Degree Nursing program.

October 21, 1988, the College was granted permission by the State Board of Regents to convert from the quarter to the semester calendar system. This change became effective fall semester 1990.

A four-year accounting program became available to students beginning fall semester 1990.

In 1989 the College added an International Studies Center to coordinate exchange programs, bring international students on campus, and assist in giving faculty exchange opportunities. During this same period Utah Valley Community College became one of the first community colleges in the United States to sign an exchange agreement with Soviet Russia. Exchange agreements were reached with Central America and Caribbean countries, China, Hong Kong, Japan, Taiwan and Germany.

August 1, 1991, Dr. Sharon Staples was appointed Director of the new **University Center** and assumed responsibility for bachelor's degree programs in accounting, criminal justice, and electronic engineering technology. These programs are offered on the UVSC campus and degrees are awarded through Utah State and Weber State Universities.

January 17, 1992, the Utah State Board of Regents directed Utah Valley Community College and the Commissioner of Higher Education to develop a proposed model or plan for offering a limited number of high demand bachelor's degree programs directed to the needs of the region. The Regents' action directed that the model include the following: full data on costs with a 5-year projection, enrollment projections, program offerings, deployment of faculty, quality safeguards, accreditation processes, library and other requirements. Underscoring all of the process was the Regents' expressed concern for the undiminished continuation of UVCC's present lower division academic and technical programs.

A five-year, renewable consortium agreement was established between **Utah Valley Community College** and the **Kiev College of Hotel Management**. The program began in September, 1992 in Kiev, Ukraine.

On July 1, 1993, the name of the College was changed by the Board of Regents to **Utah Valley State College** and UVSC was given provisional accreditation by Northwest Accrediting Association to offer four year degree programs. The mission of the college was expanded to include four year degree programs. At the same time, UVSC became the first U.S. institution to receive accreditation for programs offered in the former Soviet Union.

During the 1993-94 school year, construction was completed on the Student Center Expansion and the new Theater. Accreditation was granted on June 22, 1994, by Northwest Accrediting Association.

Spring of 1995 saw the retirement of Dr. Tom Perkins as Women's Basketball Coach. During a 12-year span, his teams compiled 275 wins and 46 losses, the highest winning percentage of any active junior college coach.

December 14, 1995, the Northwest Association of Schools and Colleges granted full accreditation for all programs offered by the College, including the baccalaureate programs.

The Special Events Center was completed in January of 1996. The facility was named the David O. McKay Events Center after a multimillion dollar anonymous donation. The arena is a multi-purpose facility that will not only meet the need for physical education class space, but also be home to many community events. In January of 1997, the single game attendance record for any National Junior College Athletic Association team was set. The NBA-like atmosphere was witnessed by 8,063 fans.

The fall semesters of 1996 and 1997 brought Elementary Education and Hospitality Management as new four-year degrees, respectively. A two-year Dental Hygiene program was also added in January 1998.

*Sources: A Miracle in Utah Valley--The Story of Utah Technical College 1941-1982 by Wilson W. Sorensen
Utah Valley State College--Office of Vice President for Academic Affairs
Utah Valley State College--Office of the President
Utah Valley State College--College Relations*

COLLEGE CALENDAR 1999 FALL SEMESTER

Classes Begin	August 25
Labor Day Holiday	September 6
Student Fall Break	October 7,8
Thanksgiving Holiday	November 24, 25, 26
Classes End	December 10
Final Examinations	December 13, 14, 15, 16
Fall Semester Ends	December 16

COLLEGE CALENDAR 2000 SPRING SEMESTER

Classes Begin	January 3
Human Rights Day Holiday	January 15
President's Day Holiday	February 19
Spring Break	March 14, 15, 16
Good Friday Holiday	April 13
Classes End	April 20
Final Examinations	April 23, 24, 25, 26
Commencement	April 27

COLLEGE CALENDAR 2000 SUMMER SEMESTER

Session I (First 5 weeks - 24 days)

Classes Begin	May 1
Memorial Day Holiday	May 29
Classes End	June 2

Session II (First 7 1/2 weeks - 36 days)

Classes Begin	May 1
Memorial Day Holiday	May 29
Classes End	June 20

Session III (Full 15 weeks - 72 days)

Classes Begin	May 1
Memorial Day Holiday	May 29
Independence Day Holiday	July 4
Pioneer Day Holiday	July 24
Classes End	August 11

COLLEGE CALENDAR
2000 SUMMER SEMESTER
(Continued)

Session IV (Last 10 weeks - 48 days)

Classes Begin	June 5
Independence Day Holiday	July 4
Pioneer Day Holiday	July 24
Classes End	August 11

Session V (Second 7 1/2 weeks - 36 days)

Classes Begin	June 21
Independence Day Holiday	July 4
Pioneer Day Holiday	July 24
Classes End	August 11

COLLEGE PRESIDENTS

Mr. Wilson W. Sorensen	1946-1982
Dr. J. Marvin Higbee	1982-1988
Dr. Kerry D. Romesburg	1988-present

COLLEGE NAME CHANGES

1941	Central Utah Vocational School
1963	Utah Trade Technical Institute
1967	Utah Technical College at Provo
1987	Utah Valley Community College
1993	Utah Valley State College

Source: Utah Valley State College, Office of the President

UTAH STATE BOARD OF REGENTS

<u>Name</u>	<u>Term*</u>
Kenneth G. Anderton	2001
Jerry C. Atkin	2005
Pamela J. Atkinson	2003
Brian D. Brown (student)	2000
Aileen H. Clyde, Vice Chair	2001
David J. Grant	2001
L. Brent Hoggan	2003
Karen H. Huntsman	2001
James S. Jardine	2005
Michael R. Jensen	2005
Charles E. Johnson, Chair	2003
David J. Jordan	2003
Winn L. Richards	2003
Paul S. Rogers	2001
Maria Sweeten	2005
Cecelia H. Foxley, Commissioner	

* Term expires June 30 of year indicated.

Source: Utah State Board of Regents Office Website

UTAH STATE BOARD OF REGENT CHAIRS

Charles E. Johnson	1998-Present
Kenneth G. Anderton	1994-1997
Steven E. Snow	1993-1994
Douglas S. Foxley	1989-1993
W. Eugene Hansen	1987-1989
Sue Marie Young	1985-1987
Kem C. Gardner	1981-1985
Donald B. Holbrook	1977-1981
George G. Hatch	1973-1977
Donald B. Holbrook	1973-1973
Peter W. Billings	1969-1973

UTAH COMMISSIONERS OF HIGHER EDUCATION

Cecilia H. Foxley	1993-present
Wm. Rolfe Kerr	1985-1993
Arvo Van Alstyne	1981-1985
Terrel H. Bell	1976-1981
G. Homer Durham	1969-1976

Source: Utah State Board of Regents Office Website

**UTAH STATE BOARD OF EDUCATION
UTAH STATE BOARD FOR APPLIED TECHNOLOGY EDUCATION CHAIRS**

1998-present	John L. Watson	1973-75	W. Robert Wright
1997-98	Katharine B. Garff	1972-73	John L. Owen
1995-96	Marvin O. Snow	1970-72	Helen B. Ure
1991-95	Neola Brown	1968-70	LeGrand P. Backman
1990-91	Jay Liechty	1966-68	Lynn S. Richards
1988-90	Ruth Hardy Funk	1964-66	Sheldon S. Allred
1985-88	Keith T. Checketts	1962-64	LeGrand P. Backman
1984-85	M. Richard Maxfield	1960-62	Moroni H. Brown
1982-84	Oscar McConkie	1958-60	W. C. Cole
1981-82	Jay Monson	1956-58	Charles A. White
1980-81	W. Dean Belnap	1954-56	R. V. Larson
1979-80	Lila Bjorklund	1952-54	Rulon Hinkley
1978-79	Jay Monson	1950-52	William O. Bentley
1977-78	W. Dean Belnap	1944-50	E. Allen Bateman
1976-77	Joan Burnside	1940-44	Charles H. Skidmore
1975-76	Reuben D. Law		

Source: Utah State Office of Education

UTAH SYSTEM OF HIGHER EDUCATION

Institution

College of Eastern Utah
Dixie College
Salt Lake Community College
Snow College
Southern Utah University
University of Utah
Utah State University
Utah Valley State College
Weber State University

President

Dr. Grace Sawyer Jones
Dr. Robert C. Huddleston
Dr. Frank W. Budd
Dr. Gerald J. Day
Dr. Steven D. Bennion
Dr. J. Bernard Machen
Dr. George H. Emert
Dr. Kerry D. Romesburg
Dr. Paul H. Thompson

Source: Utah System of Higher Education

TUITION AND STUDENT FEES

	<u>Fall 1995</u>	<u>Fall 1996</u>	<u>Fall 1997</u>	<u>Fall 1998</u>	<u>Fall 1999</u>
Resident					
Based on:					
5 Credit Hours	\$359.45	\$371.50	\$383.50	\$400.80	\$415.35
10 Credit Hours	\$632.35	\$644.00	\$663.50	\$688.92	\$713.25
15 Credit Hours	\$727.85	\$737.00	\$759.50	\$786.92	\$814.25
Non-Resident					
Based on:					
5 Credit Hours	\$1065.70	\$1077.75	\$1114.50	\$1147.80	\$1187.60
10 Credit Hours	\$1953.60	\$1965.25	\$2034.50	\$2095.92	\$2163.00
15 Credit Hours	\$2295.10	\$2304.25	\$2386.50	\$2457.92	\$2535.00

The tuition and fee schedule is partially linear; therefore, the amounts charged for tuition and fees change at each increment of total credit hours enrolled. The above figures show the amounts for three of these increments: 5, 10 and 15 credit hours.

Source: Utah Valley State College, Class Schedules

STUDENT BODY PRESIDENTS

Baron Rohbock	Lindon, Utah	1999-2000
Dave Nabrotzky	Corona, California	1998-1999
J. Steven Beck	Provo, Utah	1997-1998
Phil L. Clegg	Kamas, Utah	1996-1997
Terry Ann Harward	Provo, Utah	1995-1996
Shad Sorenson	Oakley, Utah	1994-1995
Stephen Hatch	American Fork, Utah	1993-1994
Paul Von Strahl	Orem, Utah	1992-1993
Ken Patey	Orem, Utah	1991-1992
Kelly Bitters	Orem, Utah	1990-1991
Deryn Young	Alton, Utah	1989-1990
Jim Woods	Provo, Utah	1988-1989
Ben Gould	Orem, Utah	1987-1988
George Marshall	Orem, Utah	1986-1987
Bobby Thomas	California	1985-1986
Jay Deuel	Tucson, Arizona	1984-1985
Gordon Wilson	Lehi, Utah	1983-1984
Scott Banasky	Green River, Utah	1982-1983
Kerry Graves	Mapleton, Utah	1981-1982
Mark Fisher	Lanham, Maryland	1980-1981
Lee Barrus	Othello, Washington	1979-1980
Bruce Burnett	Provo, Utah	1978-1979

STUDENT BODY PRESIDENTS

(continued)

Blake Buhler	American Fork, Utah	1977-1978
William Reese	Vernal, Utah	1976-1977
Mel Poulsen	Richfield, Utah	1975-1976
LaVerl Crosby	Provo, Utah	1974-1975
Randy Kidman	Ogden, Utah	1973-1974
Terry K. Holt	Brigham City, Utah	1972-1973
Ken Law	Springville, Utah	1971-1972
Norm Thorson	Provo, Utah	1970-1971
Richard L. Evans	Orem, Utah	1970-1971
Doug Wright	Provo, Utah	1969-1970
Bruce Smith	Orem, Utah	1968-1969
Gary Houser	Orem, Utah	1967-1968
Jim Tilson	Spanish Fork, Utah	1966-1967
Donald P. Fordham	Pleasant Grove, Utah	1965-1966
Chuck Goodyear	Indianapolis, Indiana	1964-1965
Glen LaVar Cox	Hinkley, Utah	1963-1964
Robert Button	Provo, Utah	1962-1963
Paul Hart	Orem, Utah	1961-1962
Duane Johnson	Showlow, Arizona	1960-1961

STUDENT BODY PRESIDENTS

(continued)

Duane Johnson	Showlow, Arizona	1959-1960
William Nuttall	Provo, Utah	1958-1959
James G. Goodman	Roy, Utah	1957-1958
Lynn Powell	Nephi, Utah	1956-1957
Blane Elton	Santaquin, Utah	1955-1956
Clark Jolley	Pleasant Grove, Utah	1954-1955
Calvin Davies	Panguitch, Utah	1953-1954
William H. White	Goshen, Utah	1952-1953
Mark Anderson	Provo, Utah	1951-1952
Bill Hales	Pocatello, Idaho	1950-1951
Thomas Donald Forsyth	Provo, Utah	1949-1950
Lee Russell Cardall	Salt Lake City, Utah	1948-1949
Mark H. Nilsen	Provo, Utah	1947-1948
Don A. Taylor	Spanish Fork, Utah	1946-1947

Source: Utah Valley State College, Student Government

TEACHER OF THE YEAR

1998-1999	John Jarvis David Richard Keller David O. Litchford Don Ray Nelson Michael Jay Shively	1993-1994	Bret H. Boyer Loretta Palmer Anita Musto G. Randall King Gordon B. Garrett
1997-1998	William B. Cobb, Jr. Karin Sue Davidson K.D. Taylor Renee Van Buren	1992-1993	Steve Adams
1996-1997	JaNae Brown Haas Doug Bradley Deborah Marrott Pat Ormond Christine Walker	1991-1992	Del Shumway
1995-1996	Darin Taylor Joseph Hwang Benjamin Bean John Nield Kathryn Hall	1990-1991	Larry B. Marsing
1994-1995	Clixie Larson Larry E. Roberts Susanne R. Loris Ronald J. Hammond Doris Garner	1989-1990	Barbra Ann Hoge
		1988-1989	David O. Litchford
		1987-1988	Elma Mack
		1986-1987	Kim I. Brewster
		1985-1986	Wesley M. Bitters
		1984-1985	Douglas L. Jorgensen
		1983-1984	Rulon J. Wells
		1982-1983	James E. Barnes
		1980-1981	Stephen M. Trane
		1979-1980	Robert F. Steele
		1978-1979	Rex Losee
		1977-1978	J.D. Davidson
		1976-1977	Elma Mack

Source: Utah Valley State College, Vice President of
Academic Affairs

DISTINGUISHED EMPLOYEE OF THE SEMESTER

SPRING 1999 Data Unavailable

FALL 1998 Data Unavailable

SPRING 1998 Junko Watabe
Helen Kennington
Margaret Bellon

FALL 1997 Tara Yates
Joyce Oliphant
Michael Jacobsen

SPRING 1997 Kristi Dockstader
Jolene Nuttall
Ann Lickey

FALL 1996 Dan Lukins
Claudine Boothe
Richard Nielson

SPRING 1996 Data unavailable

FALL 1995 Irene Young
Bart Jacobs
Julie Bagley

SPRING 1995 Lynnae Marsing
Denise Pino
Rhondelle Rasmussen

FALL 1994 Nancy Bartlett
Mark Bezzant
Judy Bleggi

Source: Utah Valley State College, Professional Association of College Employees

ATHLETICS

FINAL RECORDS AND CONFERENCE FINISHES

	<u>1994-95</u>	<u>1995-96</u>	<u>1996-97</u>	<u>1997-98</u>	<u>1998-99</u>
WOMEN					
Basketball	28-4(2nd)	29-6(1st)	25-7(1st)	23-10(2nd)	15-17(7th)
Softball	15-30(3rd)	14-26(5th)	32-20(2nd)	31-17(2nd)	43-10(1st)
Volleyball	28-9(1st)	28-9(1st)	31-12(2nd)	31-11(1st)	46-9(2nd)
Rodeo	4 th	4 th	6 th	*	*
MEN					
Basketball	22-10(4th)	29-6(1st)	24-8(3rd)	22-9(5th)	24-8(3rd)
Baseball	24-21(3rd)	31-21(2nd)	37-20(2nd)	42-15(1st)	19-32(8th)
Rodeo	3 rd	2 nd	3 rd	*	*

* Rodeo information was unavailable at the time of publication.
 Source: Utah Valley State College, Sports Information Director

HONORARY DEGREE RECIPIENTS

Kurt Bestor	1999	DeLance W. Squire	1993
Bill Pope	1998	Alan Ashton	1992
Margaret Pope	1998	Lavorn Sparks	1992
Dr. Steven R. Covey	1997	Joe Cannon	1991
Karen Ashton	1997	Veonne Howlett	1991
Dr. Wm. Rolfe Kerr	1997		
Honorable Michael O. Leavitt	1996	Donald Holbrook	1990
Marlon O. Snow	1996	Orville Gunther	1990
Ronald A. Rasband	1995	Roy Despain	1989
Shunji Aoki	1995	Florence Ragan	1989
Honorable LeRay L. McAllister	1995		
Larry H. Miller	1994	Raymond J. Norda	1988
Janine Pease-Windy Boy	1994		
Neal Savage	1994		

HONORARY DEGREE RECIPIENTS

(Continued)

Grant Burgeon	1987	Sylvia C. Anderson	1977
Paul Rogers	1987	Calvin L. Rampton	1977
Bill Anderson	1986	J.C. Moffitt	1975
James R. Moss	1985	ElRoy Nelson	1975
		Glen R. Swenson	1975
Don E. James	1984	Seth P. Billins	1974
Charles E. Peterson	1984	Frank S. Dain	1974
Hyrum E. Johnson	1983	Richard DeJong	1973
Wilson W. Sorensen	1983	Jack C. Higbee	1973
		Richard S. Prows	1973
James S. Clark	1978	Edna H. Baker	1971
Theron J. Luke	1978	John O. Beesley	1971
Helen B. Ure	1978	Edmund M. Evans	1971
		Von H. Robertson	1971

Source: Utah Valley State College, College Relations

UTAH VALLEY POPULATION

<u>AREA</u>	<u>1970</u>	<u>1980</u>	<u>1994</u>
Alpine	1,047	2,649	4,547
American Fork	7,713	12,564	18,194
Cedar Hills	NA	571	1,465
Elk Ridge	NA	381	1,036
Genola	424	630	1,069
Goshen	459	582	610
Highland	NA	2,435	5,909
Lehi	4,659	6,848	10,535
Lindon	1,644	2,796	4,989
Mapleton	1,980	2,726	4,203
Orem	25,729	52,399	74,402
Payson	4,501	8,246	10,837
Pleasant Grove	5,327	10,833	15,813
Provo	53,131	74,108	88,519
Salem	1,081	2,233	3,091
Santaquin	1,236	2,175	2,676
Spanish Fork	7,284	9,825	13,522
Springville	8,790	12,101	15,762

Source: Statistical Abstract of Utah, 1996

EMPLOYMENT IN UTAH COUNTY BY TYPE
1993

<u>OCCUPATION</u>	<u>1993</u>
Agricultural Services	1,209
Construction	8,314
Farm Workers	2,214
Finance, Insurance, and Real Estate	5,824
Government	18,589
Manufacturing	15,149
Mining	91
Proprietors	22,241
Services	54,845
Transportation, Communication, and Utilities	2,512
Wholesale and Retail Trade	28,199

Source: Statistical Abstract of Utah, 1996

CONTENTS

ADMINISTRATION

Board of Trustees	27
Board of Trustees Chairs	28

BOARD OF TRUSTEES

Members Appointed by the Governor of Utah

<u>NAME</u>	<u>TERM EXPIRES</u>
David Adams	November 30, 1999
David R. Bradford	June 30, 2001
Wilford W. Clyde (Co-Vice Chair)	June 30, 1999
Ronald J. Dallin	June 30, 2003
Marianne F.G. Heaps (Co-Vice Chair)	June 30, 1999
Corrine Paxman Hill	June 30, 2003
Douglas W. Morrison (Chair)	June 30, 2001
Baron Rohbock	April 30, 2000
Paul K. Sybrowsky	June 30, 2001
John H. Zenger	June 30, 2001

Source: Utah Valley State College, Office of the President

BOARD OF TRUSTEES CHAIRS

	<u>When Elected</u>
Douglas W. Morrison	August 1999
Paul Sybrowsky	August 1997
Beth Tolbert	August 1995
Alan Ashton	September 1993
Ray Harding	September 1991
DeLance Squire	July 1989
Mary Anne Wood	September 1985
Howard Pace	July 1982
Charles Bates	July 1980
Grant Burgon	July 1978

Source: Utah Valley State College, Office of the President

CONTENTS

FACULTY

Age Distribution of Full-Time Faculty by Degree and Gender	29
Ethnic Distribution of Full-Time Faculty by Degree and Gender	30
Universities Represented by Doctorates of Contract Faculty and Administrators	31
Rank by Department	34
Total Number of Employees	37

**AGE DISTRIBUTION OF FULL-TIME FACULTY
BY DEGREE AND GENDER
OCTOBER 1999**

		<u>26-30</u>	<u>31-35</u>	<u>36-40</u>	<u>41-45</u>	<u>46-50</u>	<u>51-55</u>	<u>56-60</u>	<u>Over 60</u>
Doctorate	Male	0	3	6	5	11	13	12	3
	Female	0	2	2	6	2	3	3	1
Masters	Male	1	6	7	6	9	16	15	14
	Female	0	5	6	8	7	7	12	5
Bachelors	Male	2	5	5	5	5	6	6	5
	Female	0	3	3	1	2	0	1	3
Associate	Male	0	1	0	1	1	7	1	2
	Female	0	0	0	1	0	0	0	0
Trade School	Male	0	0	2	1	2	1	1	0
	Female	0	0	0	0	1	0	0	0
Not Specified	Male	0	0	5	4	1	3	3	3
	Female	0	0	1	1	1	2	2	2
Total		3	25	37	39	42	58	56	38

Source: Utah Valley State College, Human Resources Department

**ETHNIC DISTRIBUTION OF FULL-TIME FACULTY
BY DEGREE AND GENDER
OCTOBER 1999**

		<u>American Indian Alaska/Native</u>	<u>Asian Pacific Islander</u>	<u>Black</u>	<u>Caucasian</u>	<u>Hispanic</u>	<u>Not Specified</u>
Doctorate	Male	0	1	0	51	1	0
	Female	0	1	0	18	0	0
Masters	Male	1	2	0	71	0	0
	Female	0	0	0	50	0	0
Bachelors	Male	0	0	2	37	0	0
	Female	0	0	0	13	0	0
Associate	Male	0	0	0	13	0	0
	Female	0	0	0	1	0	0
Trade School	Male	0	0	0	7	0	0
	Female	0	0	0	0	1	0
Not Specified	Male	0	1	0	14	0	4
	Female	0	0	0	7	1	1
Total		1	5	2	282	3	5

Source: Utah Valley State College, Human Resources Department

**UNIVERSITIES REPRESENTED BY
DOCTORATES OF CONTRACT FACULTY & ADMINISTRATORS
1999-00**

<u>Faculty</u>	<u>University</u>	<u>Faculty</u>	<u>University</u>
Abbott, Scott	Princeton University	Corrigan, Stephanie	University of Virginia, Charlottesville
Anderson, Russell	University of Arizona	Cousins, Robert J.	Purdue University
Aslett, Richard	Brigham Young University	deBry, Roger K.	University of Utah
Bahr, Damon L.	Brigham Young University	Dodwell, Karen	University of Houston
Baker, William L.	University of Utah	Eagar, L. Brent	University of Washington
Barthel, Brian R.	Southern Illinois University, Carbondale	Eldredge, Bryan	University of Iowa
Bennett, Lyn	University of Kansas	Englehardt, Elaine	University of Utah
Bennion, Janet	University of Utah	Farnsworth, Briant J.	Brigham Young University
Benson, Linda F.	Brigham Young University	Fillmore, Jane	Brigham Young University
Birch, Brian D.	Claremont Graduate School, Claremont	Foster, Chuck	Brigham Young University
Bracken, Mark E.	Brigham Young University	Fritz, Tamara	Washington State University
Buchman, Joseph	Indiana University	Gardner, Norman	University of Utah
Bule, Steven C.	Ohio State University	Glenn, Lowell M.	George Washington University
Bulger, Jeffrey	University of Tennessee	Gomm, Annette J.	Oklahoma State University
Bullock, Brent	Brigham Young University	Gordon, Philip	University of Illinois, Urbana-Champaign
Butler, Rusty	University of Arizona	Gray, Lawrence J.	Arizona State University
Bybee, Paul	Brigham Young University	Greer, Dennis	Utah State University
Byrd, Elaine	Brigham Young University	Gunawardena, Gamini	University of Utah
Callison, James	University of Arizona	Gygi, Janice	University of Utah
Carey, Ernest	University of Hawaii	Hamblin, Laura	University of Denver
Carney, Rob	University of SW Louisiana, Lafayette	Hammond, Ronald	Brigham Young University
Chipman, Ken	Brigham Young University	Harris, James G.	University of Alberta Edmonton
Cobb, William W.	University of Colorado	Hillman, Vance	Southern Illinois University
Cook, Bradley J.	Oxford University		

**UNIVERSITIES REPRESENTED BY
DOCTORATES OF CONTRACT FACULTY & ADMINISTRATORS
1999-00
(continued)**

<u>Faculty</u>	<u>University</u>	<u>Faculty</u>	<u>University</u>
Hover, Thomas	Brigham Young University	Nield, John	Idaho State University
Islam, Fairdul	University of Illinois, Urbana	Olson, Floyd	University of Northern Iowa
Iroz, Kathryn	Northern Illinois University	Oyler, Dee	Brigham Young University
Jackson, Malan R.	Arizona State University	Price, James V.	University of Colorado, Boulder
Jaspersen, Jill	Brigham Young University	Palmer, Loretta	Brigham Young University
Jensen, Jack	Brigham Young University	Parker, Bruce	Utah State University
John, Cameron R.	University of Arizona	Perkins, Thomas	Brigham Young University
Jones, Christopher D.	West Virginia University	Peterson, Nancy L.	University of Virginia
Jones, Christopher G.	Utah State University	Plothow, Roger H.	Brigham Young University
Kazemzadeh, Masoud	University of Southern California, LA	Rasmussen, Kirk	University of Utah
Keller, David	University of Georgia	Raynes, Joseph L.	Texas A & M University
Kyburz, Bonnie L.	University of South Florida	Riboldi, Liliana	University of Utah
Lehnardt, Eberhard	Rice University	Richan, Pat	University of Northern Colorado
Lewis, Scott C.	Montana State University	Richards, Grant L.	Brigham Young University
Li, Ya	University of Utah	Robbins, Robert	University of Illinois
Loveridge, Robert	New Mexico State University	Roberson, Philip	Oklahoma State University
Martin, D. Dee	Oregon State University	Romesburg, Kerry D.	Arizona State University
McKenna, Hazel	Brigham Young University	Seagle, Donald B.	Southern Illinois University, Carbondale
Mecham, Harvey	Brigham Young University	Shively, Michael	Purdue University
Merrin, Christine Rossi	New Mexico State University	Shumway, Del K.	Washington University, St. Louis
Merrin, Stephen	New Mexico State University	Sievers, Raymond A.	University of Northern Colorado
Miraglia, Stephen J.	Arizona State University	Silvia, Alfred	University of Pittsburgh
Mizell, Karen L.	University of Oklahoma	Slover, Timothy W.	University of Michigan

**UNIVERSITIES REPRESENTED BY
DOCTORATES OF CONTRACT FACULTY & ADMINISTRATORS
1999-00
(continued)**

<u>Faculty</u>	<u>University</u>	<u>Faculty</u>	<u>University</u>
Smith, D. J.	University of Utah	Van Buren, Renee	Arizona State University
Snedegar, Keith	University of Oxford	Vawdrey, Colleen	Utah State University
Spafford, Ann	Brigham Young University	Vogel, Charles	University of California, Davis
Spencer, Mark	Ohio State University	Wager, Jans B.	University of California, Davis
Staples, Sharon L.	University of Utah	Warner, Douglas E.	Arizona State University
Stoddard, Lucille T.	Utah State University	Whaley, Wayne	Brigham Young University
Strange, Joe C.	University of Arkansas, Little Rock	Wilson, Ian Kenneth	University of Calgary
Taylor, Paul L.	University of Utah	Winn, Bradley A.	University of Michigan
Thomas, Ryan	Brigham Young University	Worthington, J. Karl	University of Iowa
Thomton, Debra L.	University of New Mexico, Albuquerque	Yells, David P.	University of Nebraska
Tueller, Alden B.	University of California		

Source: Utah Valley State College, Vice President for Academic Affairs

**RANK BY DEPARTMENT
1999-00**

<u>DEPARTMENT</u>	<u>PROFESSOR</u>	<u>ASSOCIATE PROFESSOR</u>	<u>ASSISTANT PROFESSOR</u>	<u>INSTRUCTOR</u>
Accounting	2	2	1	1
Air Conditioning/Refrigeration	0	2	0	0
Art & Visual Comm.	4	3	0	0
Automotive/Diesel	0	1	3	0
Aviation	0	0	1	2
Behavioral Science	3	2	3	0
Building Construction & Construction Management	1	0	1	2
Business Communications And Office Technology	2	5	1	3
Business Management	7	3	5	2
Cabinetry Woodworking	0	1	0	1
Collision Repair Technology	0	0	2	1
Computer Science and Information Systems	3	3	6	3
Co-op	0	0	0	1
Dental Hygiene	1	0	0	1
Diesel Mechanics Technology	2	2	0	0
Drafting Technology	3	0	2	1
Education, Child & Family Studies	0	1	9	0
Electrical Automation/Robotics	1	0	0	1
Electronic & Computer Tech	3	2	0	0
English & Literature	1	3	15	1

RANK BY DEPARTMENT

1999-00 (continued)

<u>DEPARTMENT</u>	<u>PROFESSOR</u>	<u>ASSOCIATE PROFESSOR</u>	<u>ASSISTANT PROFESSOR</u>	<u>INSTRUCTOR</u>
Environmental Technology	0	0	1	1
Fire Science	0	1	1	1
Foreign Languages	2	1	1	1
Health & Physical Education	6	2	3	6
Hospitality Management	1	0	2	2
Humanities & Philosophy	3	2	5	0
Learning Enrichment ESL/English	0	4	3	1
Learning Enrichment Mathematics	5	2	1	0
Learning Enrichment Reading/Studies Skills	0	3	1	2
Legal Studies	1	1	1	2
Life Science	3	4	2	3
Lineman Technology	0	0	1	1
Machine Tool & Weld Tech.	0	0	3	0
Mathematics	3	6	4	2
Multimedia Technology	0	1	1	1
Nursing	0	3	8	1
Performing Arts & Comm.	1	0	3	0
Physical Sciences	7	0	3	3
Pre-Engineering	1	0	0	1
Political Science & History	3	2	4	0

RANK BY DEPARTMENT

1999-00 (continued)

<u>DEPARTMENT</u>	<u>PROFESSOR</u>	<u>ASSOCIATE PROFESSOR</u>	<u>ASSISTANT PROFESSOR</u>	<u>INSTRUCTOR</u>
Professional Driving	0	1	0	0
Technology Management	1	0	3	0
Welding Technology	2	0	0	0

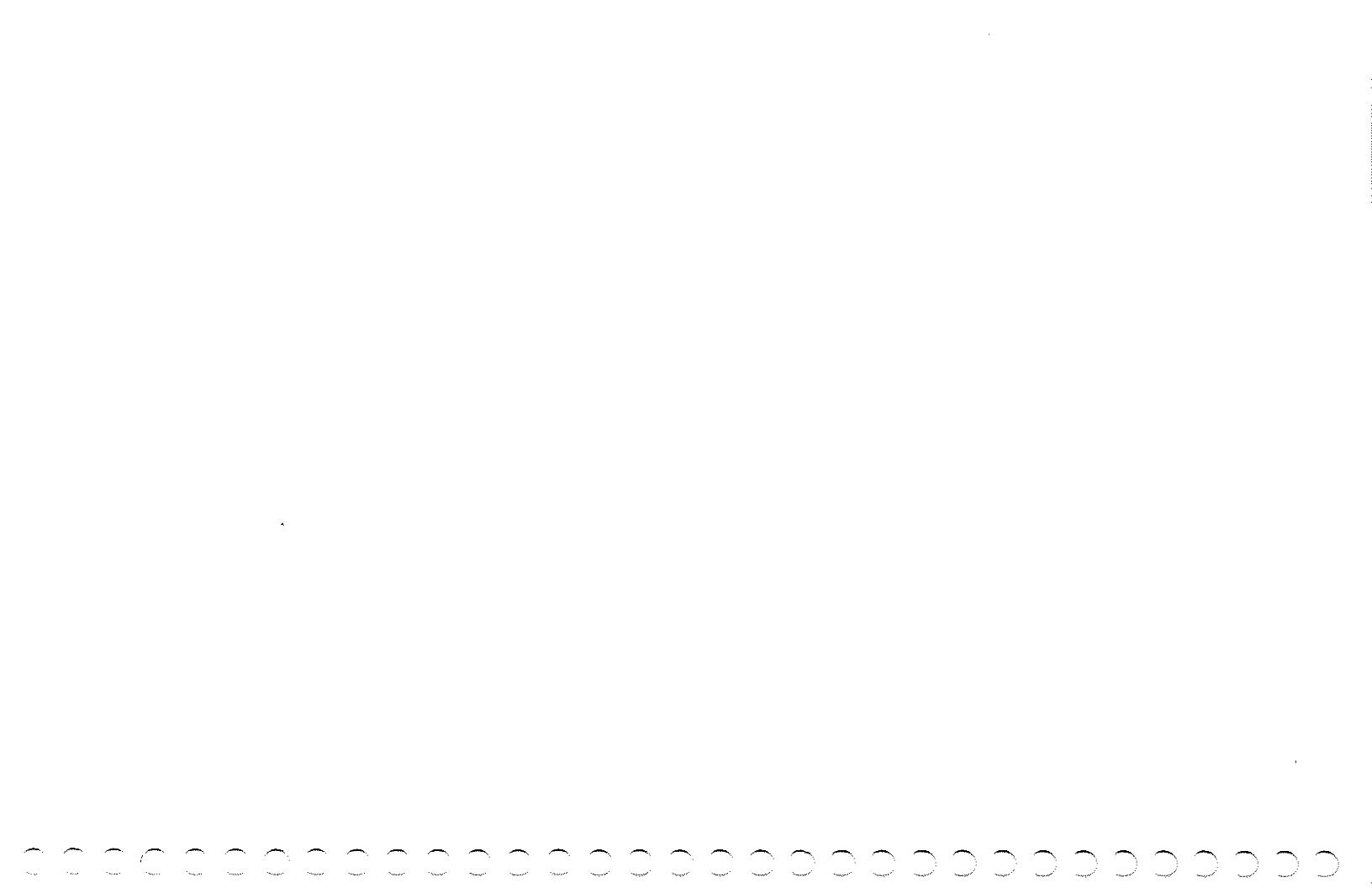
Source: Utah Valley State College, Vice President of Academic Support

TOTAL NUMBER OF EMPLOYEES
October 1, 1999

	<u>Male</u>	<u>Female</u>	<u>Total</u>
Executive/Administrative/Managerial	46	12	58
Faculty	189	81	270
Professional/Non-Faculty	150	91	241
Classified	95	197	292
Early Retirees	<u>14</u>	<u>9</u>	<u>23</u>
Total Head Count	494	390	884

HOURLY	<u>Male</u>	<u>Female</u>	<u>Total</u>
Professional/Administrative	36	30	66
Adjunct Faculty	518	289	807
Classified	251	361	612
Work Study Students	55	128	183
Other Students	<u>252</u>	<u>361</u>	<u>613</u>
Total Head Count	1112	1169	2281

Source: Utah Valley State College, Human Resources Department



CONTENTS

ENROLLMENT

Headcount Enrollment, Fall Semester 1999	38
Full-Time Equivalent Enrollment, Fall Semester 1999	39
Enrollment Comparison - Annualized FTE Students (graph)	40
Enrollment History, Fall Semesters 1995-1999 (graph)	41
Enrollment History, Spring Semesters 1995-1999 (graph)	42
Enrollment History, Summer Terms 1995-1999 (graph)	43
County Resident/Non-Resident Headcount, Fall Semesters 1994-1998	44
Enrollment from Utah Counties, Fall Semester 1999	45
Main Feeder High Schools for UVSC, Fall Semester 1999	47
Resident/Non-Resident Headcount (graph)	48
Utah System of Higher Education - Headcount Enrollment by Utah County Residency (graph)	49
Part-Time/Full-Time Headcount, Fall Semesters 1995-1999	50
Part-Time/Full-Time Headcount, Fall Semesters 1995-1999 (graph)	51
Headcount by Area of Study, Fall Semester 1999 (graph)	52
Enrollment Comparison of Utah Universities/Colleges, Fall 1998	53
Fall Enrollment Projections, (graph)	54

HEADCOUNT ENROLLMENT FALL SEMESTER 1999

	TOTAL HEADCOUNT	20,062*			
Female	9,267	46%	Non-resident	1,836	9%
Male	10,795	54%	Resident	18,226	91%
Full-time	8,811	44%	Concurrent	4,295	21%
Part-time	11,251	56%	Non-concurrent	15,767	79%
Freshmen	12,801	64%	Continuing	11,157	56%
Sophomores	3,745	19%	New	6,850	34%
Juniors	2,117	11%	Readmitted	1,935	10%
Seniors	1,395	7%	Transfer	117	1%
Other/Not Specified	4	0%	Other/Not Specified	3	0%
American Indian	123	1%			
Asian-Islander	286	1%			
Black	30	0%			
Hispanic	533	3%			
White	18,745	93%			
Other/Not Specified	345	2%	Mean Age	21.7	

*Includes concurrent enrollment

Source: Utah Valley State College, Office of Institutional Research and Management Studies

**FULL-TIME EQUIVALENT ENROLLMENT
FALL SEMESTER 1999**

TOTAL FULL-TIME EQUIVALENT (FTE)* 12,770**

Non-Resident***	1,456	11%
Resident	11,314	89%
Full-time	8,218	64%
Part-time	4,552	36%

*Full-time equivalent is the total number of credit hours in which students are enrolled divided by 15 (the credit hour load of a hypothetical "full-time" student).

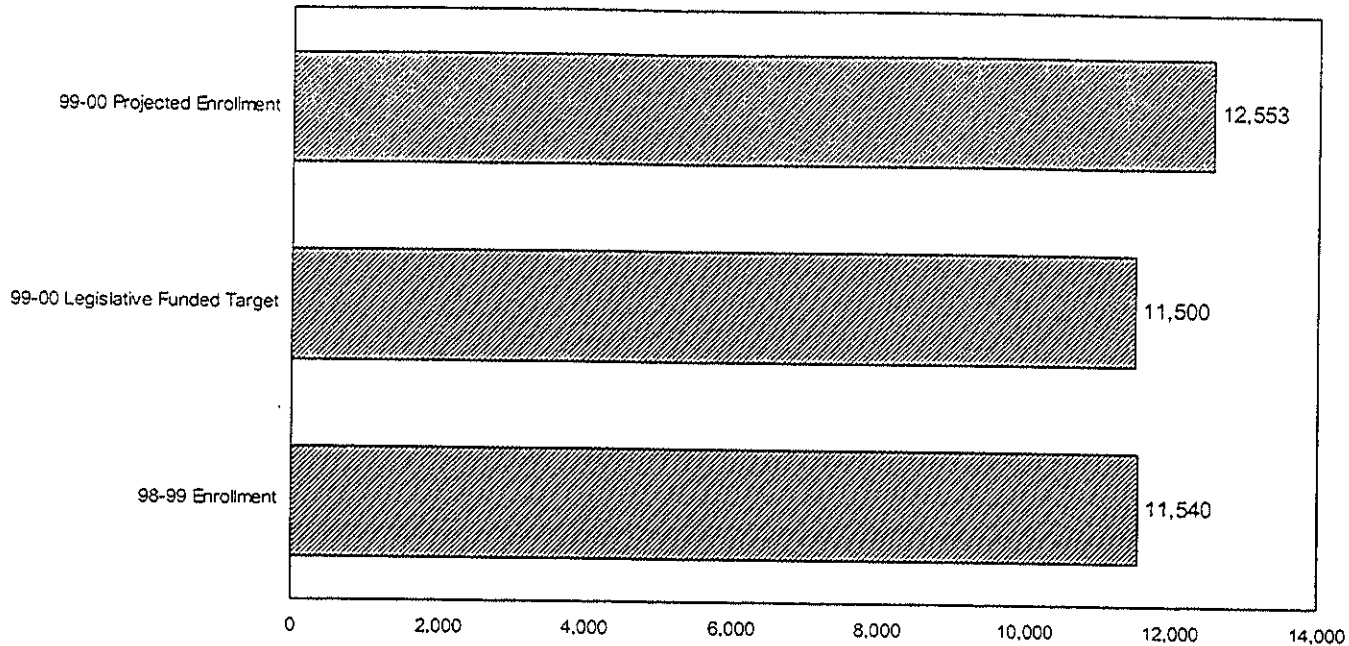
**Includes concurrent enrollment

***Numbers will not total to the total FTE due to rounding error

Source: Utah Valley State College, Office of Institutional Research and Management Studies

ENROLLMENT COMPARISON

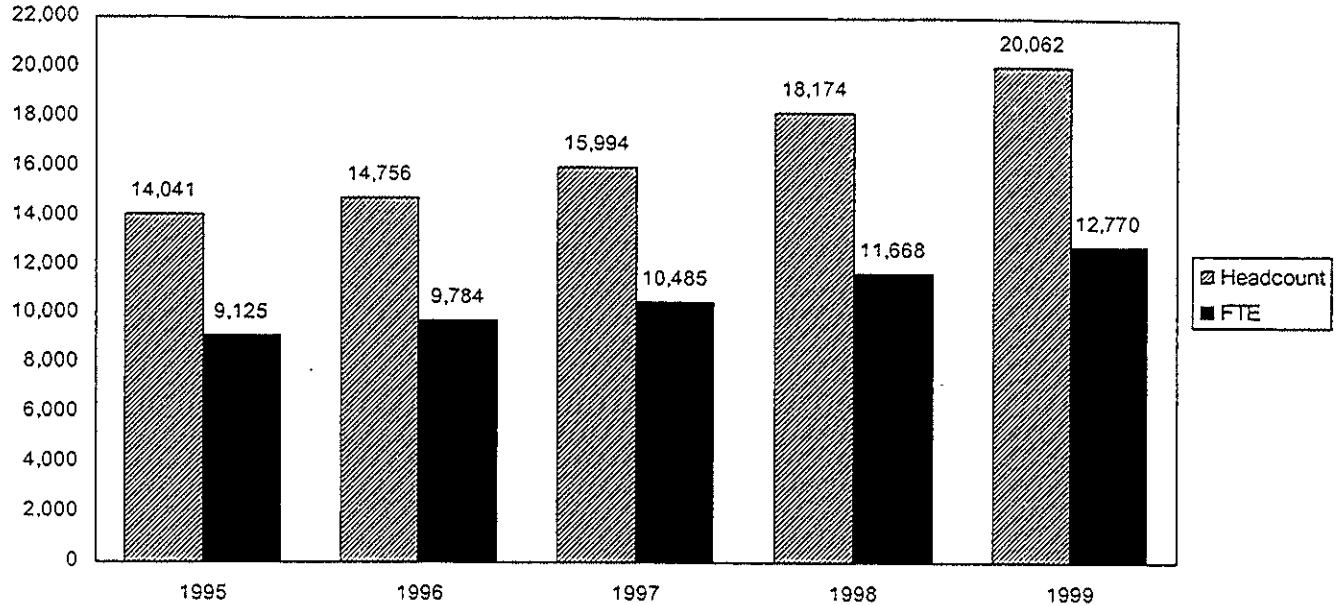
Annualized FTE Students - Budget Related



Source: Utah Valley State College, Budget Office

ENROLLMENT HISTORY

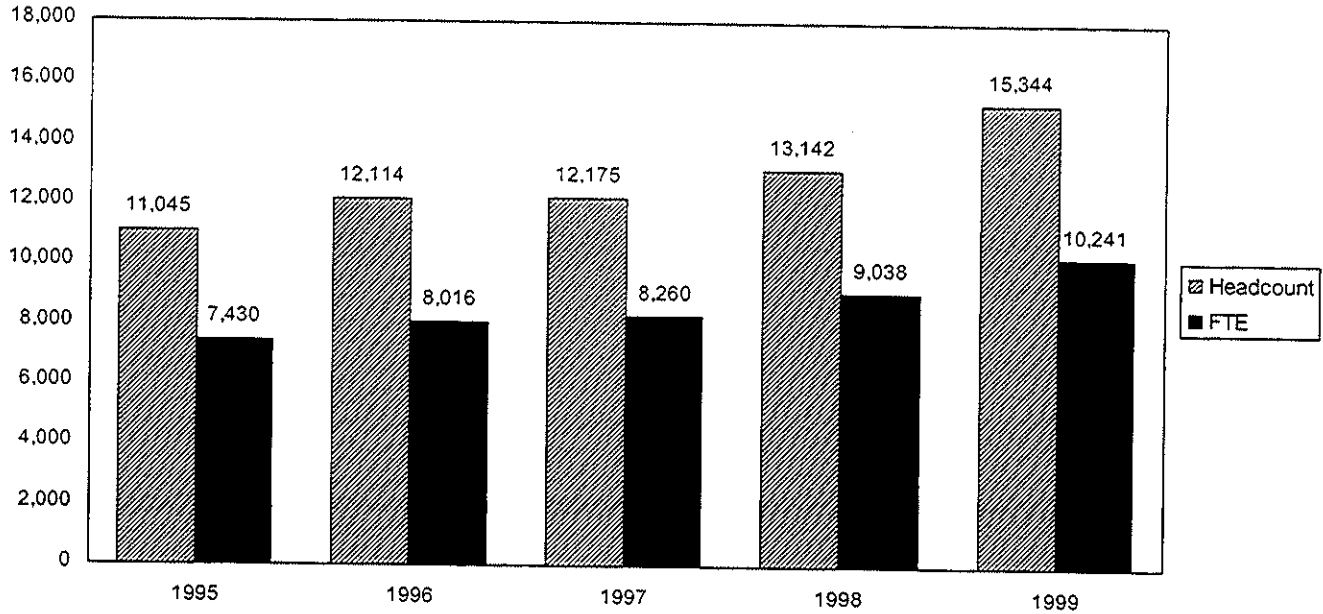
Fall Semester 1995-1999



Source: Utah Valley State College, Office of Institutional Research and Management Studies

ENROLLMENT HISTORY

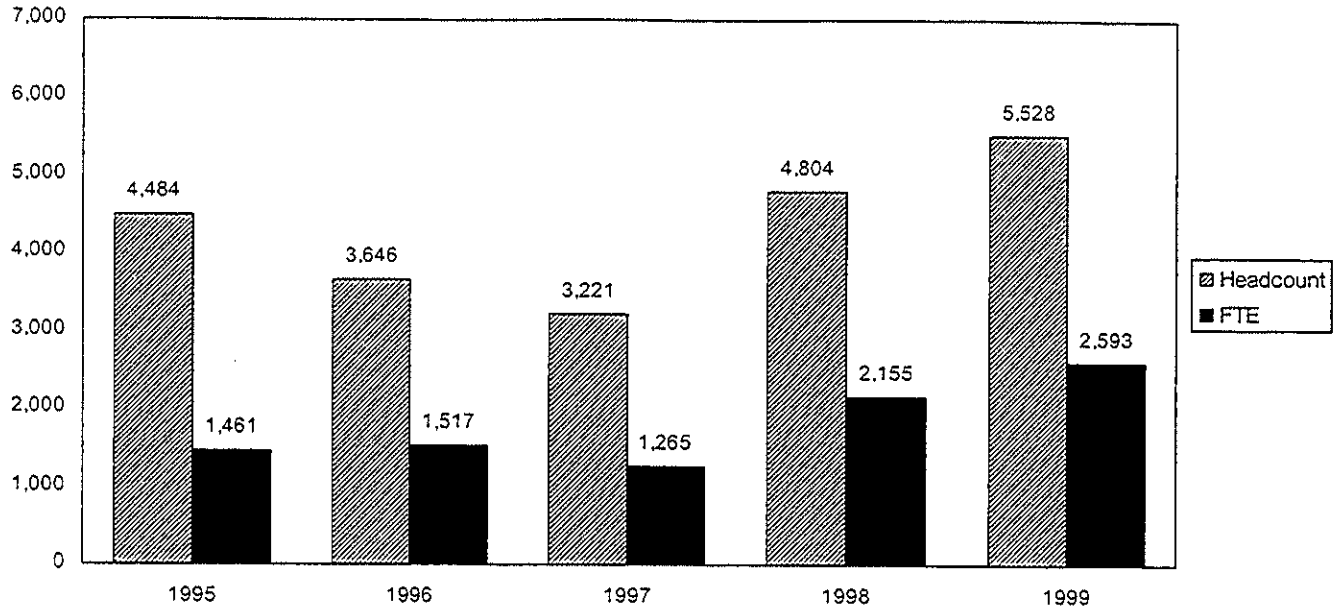
Spring Semester 1995-1999



Source: Utah Valley State College, Office of Institutional Research and Management Studies

ENROLLMENT HISTORY

Summer Semester 1995-1999



Source: Utah Valley State College, Office of Institutional Research and Management Studies

COUNTY RESIDENT/NON-RESIDENT HEADCOUNT FALL SEMESTERS 1994-1998

	<u>1994</u>	<u>1995</u>	<u>1996</u>	<u>1997</u>	<u>1998</u>
TOTAL	13,293	14,041	14,756	15,994	18,174
Resident	11,832	12,609	13,374	14,430	16,462
%	89	90	91	90	91
Utah County	7,064	8,369	7,019	8,325	12,757
%	53	60	48	52	70
Salt Lake County	513	555	1,185	1,386	1,488
%	4	4	8	9	8
Wasatch County	252	262	216	275	420
%	2	2	2	2	2
Other Counties	4,003	3,423	4,954	4,444	1,797
%	30	24	33	28	10
Non-resident	1,461	1,432	1,382	1,564	1,712
%	11	10	9	10	9
Other States	1,193	1,161	1,087	1,228	1,340
%	9	8	7	8	7
International	268	271	295	336	372
%	2	2	2	2	2

781
 11/5
 4/9/6
 222 Weber State

Source: Utah System of Higher Education, 1999-00 Data Book

**ENROLLMENT FROM UTAH COUNTIES
FALL SEMESTER 1999**

<u>COUNTY</u>	<u>NUMBER OF STUDENTS</u>
Beaver	16
Box Elder	43
Cache	86
Carbon	42
Daggett	3
Davis	198
Duchesne	70
Emery	37
Garfield	35
Grand	11
Iron	41
Juab	149
Kane	18
Millard	111
Morgan	7
Piute	14

**ENROLLMENT FROM UTAH COUNTIES
FALL SEMESTER 1999**

(continued)

<u>COUNTY</u>	<u>NUMBER OF STUDENTS</u>
Rich	3
Salt Lake	1,577
San Juan	46
Sanpete	197
Sevier	129
Summit	214
Tooele	64
Uintah	80
Utah	14,308
Wasatch	496
Washington	120
Wayne	8
Weber	89

Source: Utah Valley State College, Office of Institutional Research and Management Studies

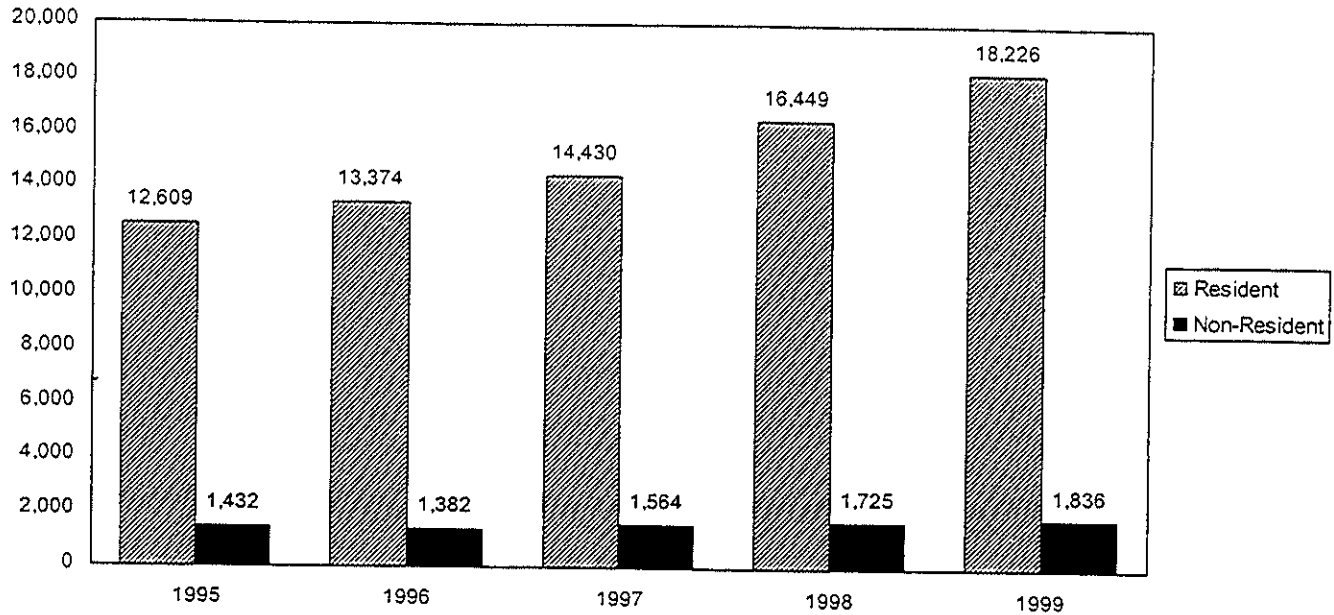
**MAIN FEEDER HIGH SCHOOLS FOR UVSC
FALL SEMESTER 1999**

<u>HIGH SCHOOL</u>	<u>NUMBER OF STUDENTS</u>
American Fork	825
Lehi	578
Mountain View	1,490
Orem	1,236
Payson	764
Pleasant Grove	1,045
Provo	985
Spanish Fork	873
Springville	971
Timpanogas	518
Timpview	947

Source: Utah Valley State College, Office of Institutional Research and Management Studies

RESIDENT/NON-RESIDENT HEADCOUNT

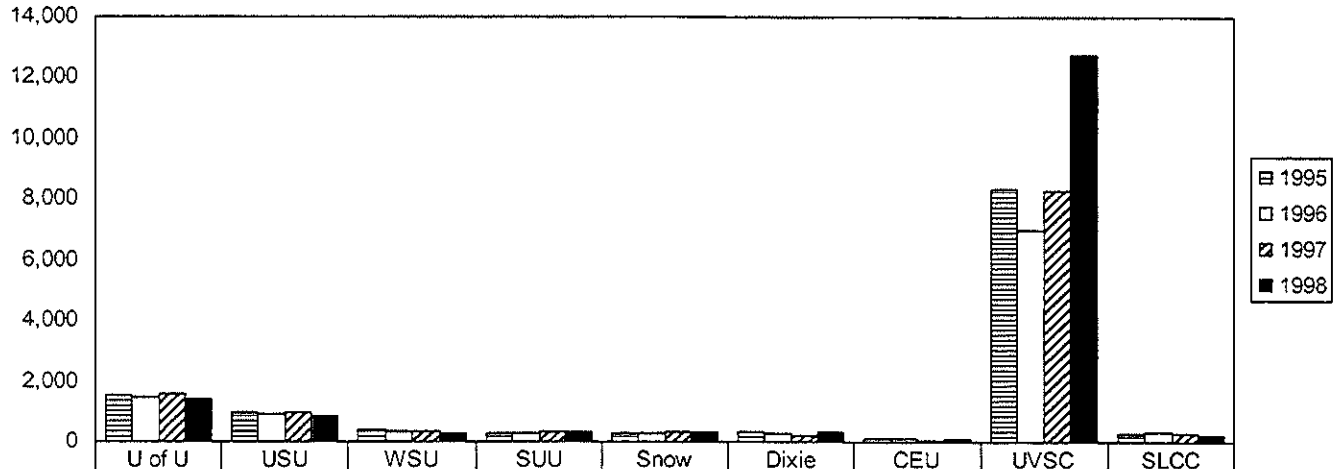
Fall Semester 1995-1999



Source: Utah Valley State College, Office of Institutional Research and Management Studies

UTAH SYSTEM OF HIGHER EDUCATION

Headcount Enrollment by Utah County Residency



	U of U	USU	WSU	SUU	Snow	Dixie	CEU	UVSC	SLCC
1995	1500	965	383	257	291	330	106	8369	307
1996	1460	879	356	301	294	276	92	7019	363
1997	1553	970	334	349	364	251	76	8325	291
1998	1415	862	305	362	334	362	111	12757	243

Source: Utah System of Higher Education, 1999-00 Data Book

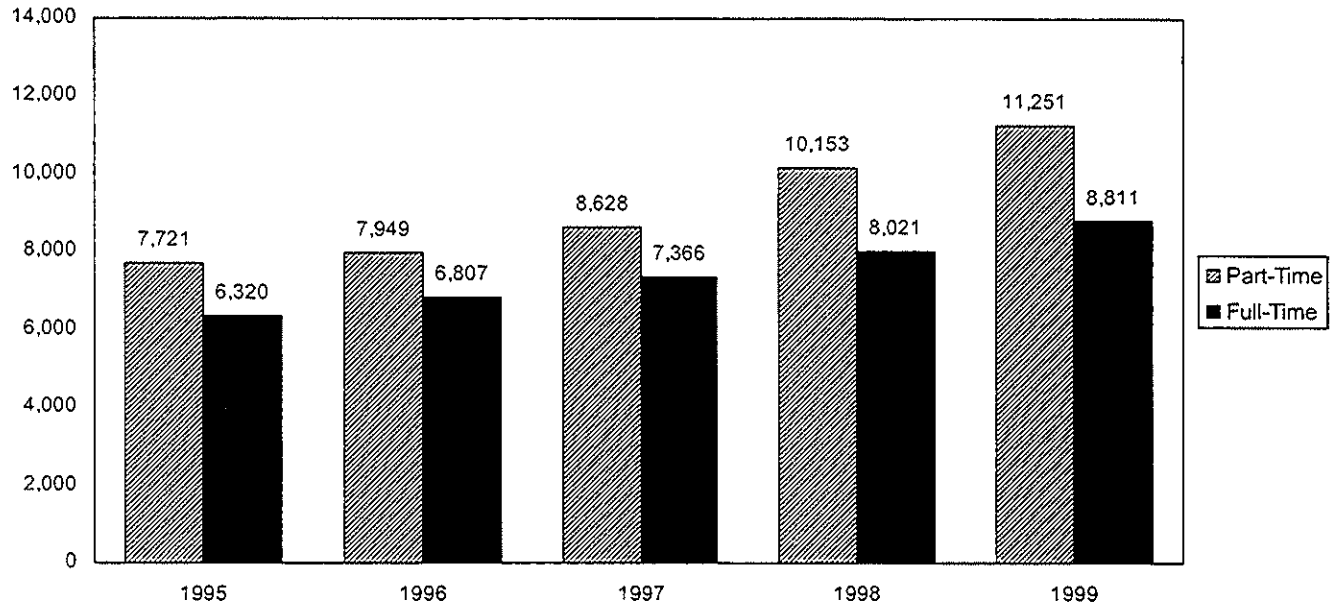
**PART-TIME/FULL-TIME HEADCOUNT
FALL SEMESTERS 1995-1999**

	<u>1995</u>	<u>1996</u>	<u>1997</u>	<u>1998</u>	<u>1999</u>
TOTAL	14,041	14,756	15,994	18,174	20,062
Part-time	7,721	7,949	8,628	10,153	11,251
Full-time	6,320	6,807	7,366	8,021	8,811

Source: Utah Valley State College, Office of Institutional Research and Management Studies

PART-TIME/FULL-TIME HEADCOUNT

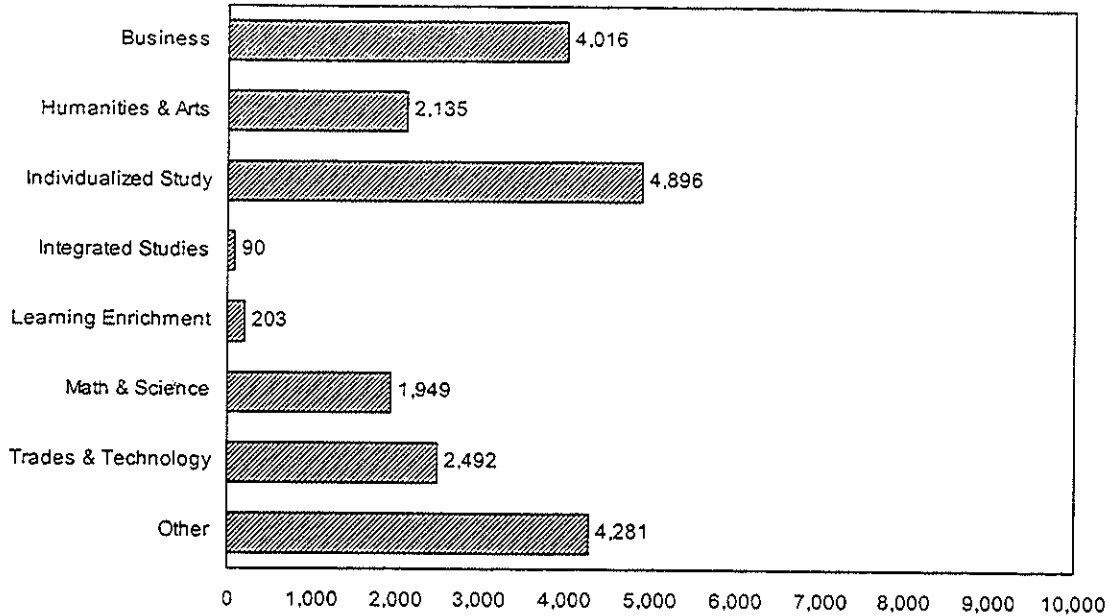
Fall Semester 1995-1999



Source: Utah Valley State College, Office of Institutional Research and Management Studies

HEADCOUNT BY AREA OF STUDY

Fall Semester 1999



Source: Utah Valley State College, Office of Institutional Research and Management Studies

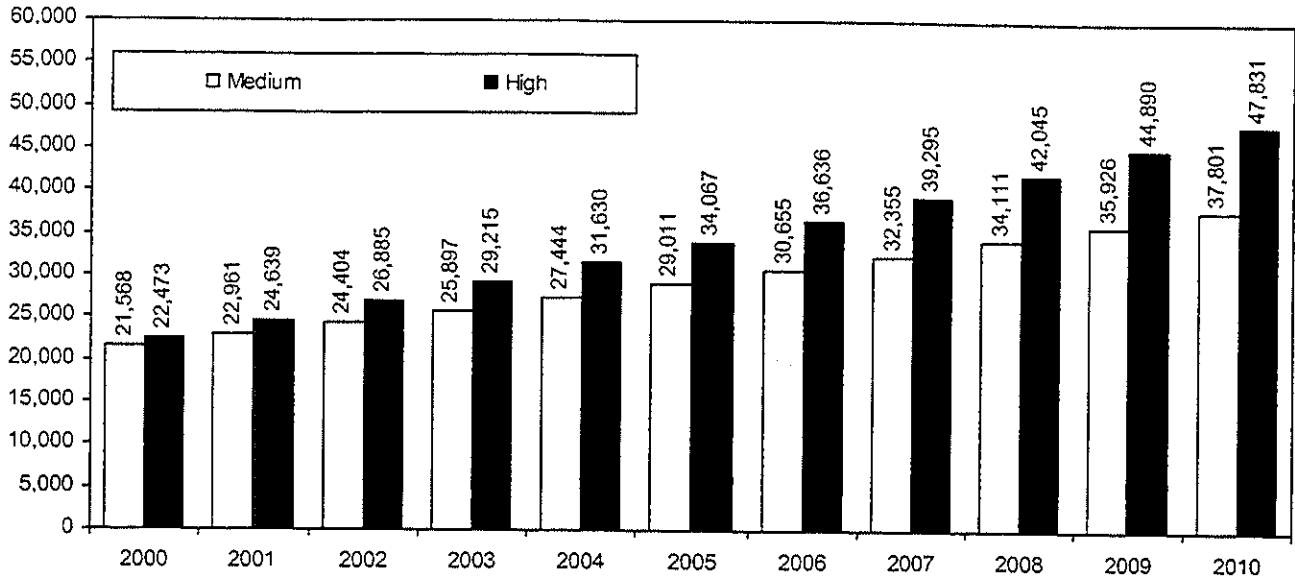
ENROLLMENT COMPARISON OF UTAH UNIVERSITIES AND COLLEGES

<u>University/College</u>	<u>Fall 1998</u>		<u>Five-Year *</u> <u>Growth Rate</u>	
	<u>Headcount</u>	<u>FTE</u>	<u>Headcount</u>	<u>FTE</u>
University of Utah	25,203	19,677	-1.5%	-1.2%
Utah State University	19,322	14,554	1.0%	0.7%
Weber State University	14,136	10,144	-2.3%	-1.7%
Southern Utah University	5,725	4,815	4.5%	3.5%
Salt Lake Community College	19,754	10,519	1.5%	-1.6%
Utah Valley State College	18,174	11,668	11.6%	10.2%
Dixie College	5,455	3,454	12.4%	6.3%
College of Eastern Utah	2,617	1,827	-1.7%	-2.1%
Snow College	<u>3,318</u>	<u>2,735</u>	<u>2.6%</u>	<u>1.7%</u>
USHE	113,704	79,394	1.9%	0.9%

* Compounded Annually

Source: Utah System of Higher education, 1999-00 Data Book

UTAH VALLEY STATE COLLEGE
FALL ENROLLMENT PROJECTIONS
Headcount 2000 to 2010



Source: Utah Valley State College, Office of Institutional Research and Management Studies

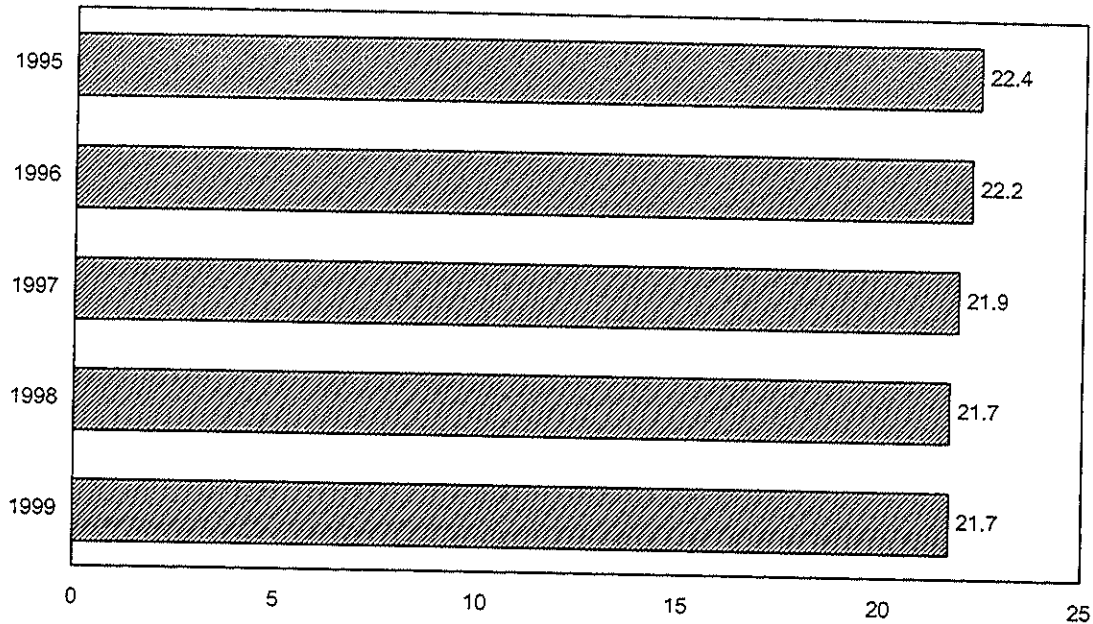
CONTENTS

STUDENT PROFILE

Mean Age of Students, 1995-1999 (graph)	55
Headcount Distribution by Age, Fall 1995-1999	56
Headcount Distribution by Ethnic Group, Fall 1995-1999	57
Male/Female Headcount, Fall 1995-1999 (graph)	58
Headcount by Class Standing, 1995-1999 (graph)	59
Geographic Origin of Students, United States	60
Citizenship of Foreign Students	64
Number of Degrees and Certificates Awarded 1998-1999	67

MEAN AGE OF STUDENTS

Fall Semesters 1995-1999



Source: Utah Valley State College, Office of Institutional Research and Management Studies

**HEADCOUNT DISTRIBUTION BY AGE
FALL SEMESTERS 1995-1999**

	<u>1995</u>	<u>1996</u>	<u>1997</u>	<u>1998</u>	<u>1999</u>
	14,041	14,756	15,994	18,174	20,062
Under 18 years	2,569	2,814	3,076	3,786	4,508
18-19 years	3,524	3,686	3,990	4,294	4,228
20-21 years	2,068	2,309	2,556	3,041	3,230
22-24 years	2,711	2,804	3,166	3,623	4,314
25-29 years	1,542	1,570	1,760	1,909	2,163
30-34 years	666	570	521	577	617
35-39 years	417	412	396	374	400
Over 39 years	544	591	529	570	602
Mean Age	22.4	22.2	21.9	21.7	21.7

Source: Utah Valley State College, Office of Institutional Research and Management Studies

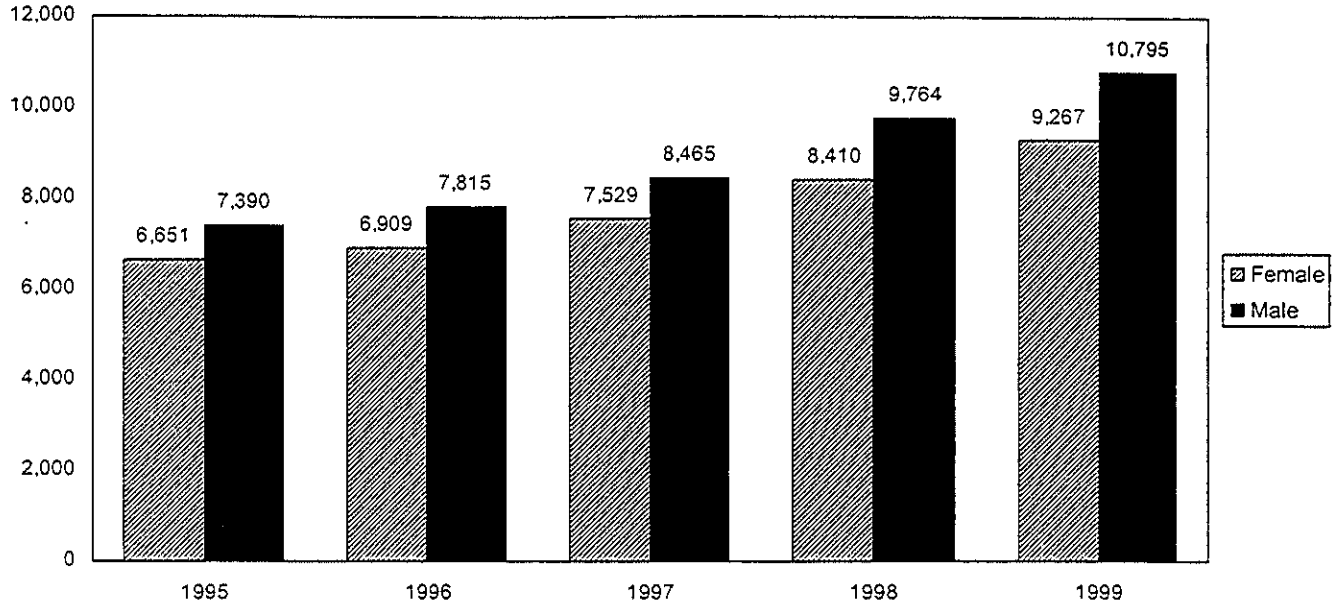
**HEADCOUNT DISTRIBUTION BY ETHNIC GROUP
FALL SEMESTERS 1995 - 1999**

	<u>1995</u>	<u>1996</u>	<u>1997</u>	<u>1998</u>	<u>1999</u>
Total	14,041	14,756	15,994	18,174	20,062
White	12,940	13,624	14,855	16,917	18,745
Hispanic	390	407	414	494	533
Asian-Islander	213	204	227	250	286
American Indian	113	107	110	130	123
Black	38	36	32	35	30
Other/Not Specified	347	378	356	348	345

Source: Utah Valley State College, Office of Institutional Research and Management Studies

MALE/FEMALE HEADCOUNT

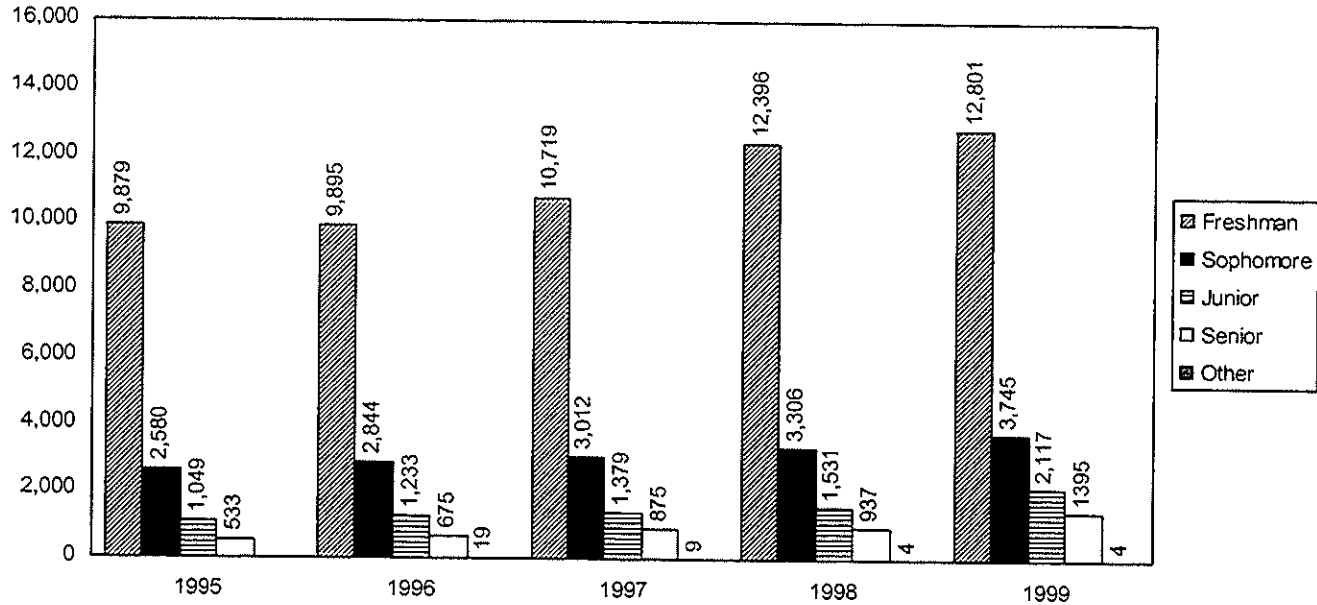
Fall Semester 1995-1999



Source: Utah Valley State College, Office of Institutional Research and Management Studies

HEADCOUNT BY CLASS STANDING

Fall Semester 1995-1999



Source: Utah Valley State College, Office of Institutional Research and Management Studies

**GEOGRAPHIC ORIGIN OF STUDENTS - UNITED STATES
FALL SEMESTER 1999**

<u>States Represented</u>	<u>Number</u>
Alabama	0
Alaska	24
Arizona	65
Arkansas	2
California	445
Colorado	71
Connecticut	10
Delaware	4
District of Columbia	0
Florida	9
Georgia	15
Hawaii	5
Idaho	63
Illinois	13

GEOGRAPHIC ORIGIN OF STUDENTS - UNITED STATES
FALL SEMESTER 1999
(continued)

<u>States Represented</u>	<u>Number</u>
Indiana	2
Iowa	9
Kansas	9
Kentucky	5
Louisiana	6
Maine	5
Maryland	17
Massachusetts	6
Michigan	15
Minnesota	6
Mississippi	4
Missouri	18
Montana	11
Nebraska	1
Nevada	80

GEOGRAPHIC ORIGIN OF STUDENTS - UNITED STATES
FALL SEMESTER 1999
(continued)

<u>States Represented</u>	<u>Number</u>
New Hampshire	3
New Jersey	8
New Mexico	23
New York	13
North Carolina	9
North Dakota	0
Ohio	18
Oklahoma	8
Oregon	48
Pennsylvania	21
Rhode Island	1
South Carolina	9
South Dakota	1
Tennessee	9

GEOGRAPHIC ORIGIN OF STUDENTS - UNITED STATES
FALL SEMESTER 1999
(continued)

<u>States Represented</u>	<u>Number</u>
Texas	52
Utah	18,386
Vermont	2
Virginia	27
Washington	82
West Virginia	5
Wisconsin	6
Wyoming	28

Source: Utah Valley State College, Office of Institutional Research and Management Studies

**CITIZENSHIP OF FOREIGN STUDENTS
FALL SEMESTER 1999**

<u>Countries</u> <u>Represented</u>	<u>Number</u>
Albania	4
Argentina	2
Bolivia	2
Brazil	19
Canada	31
Cape Verde	1
Chile	4
China	13
Colombia	7
Denmark	1
Dominican Republic	1
Ecuador	3
El Salvador	1
Fiji	1
France	3
French Polynesia	3
Germany	2
Ghana	1
Grenada	1
Guatemala	1
Honduras	1

**CITIZENSHIP OF FOREIGN STUDENTS
FALL SEMESTER 1999**

<u>Countries</u> <u>Represented</u>	<u>Number</u>
Hong Kong	6
Hungary	1
India	2
Indonesia	1
Iran	1
Italy	7
Jamaica	1
Japan	70
Jordan	1
Kenya	1
Korea	21
Lebanon	1
Macau	1
Malaysia	1
Mexico	19
Mongolia	50
Nepal	1
New Zealand	2
Norway	2
Panama	1

**CITIZENSHIP OF FOREIGN STUDENTS
FALL SEMESTER 1999**

<u>Countries</u> <u>Represented</u>	<u>Number</u>
Peru	9
Philippines	1
Russia	7
Saudia Arabia	1
Singapore	2
South Africa	4
Spain	3
Sweden	3
Switzerland	5
Taiwan	17
Thailand	3
Tonga	1
Ukraine	6
United Kingdom	2
Uruguay	1
Venezuela	3
Vietnam	1
Western Samoa	1
Yemen	6
TOTAL NUMBER OF COUNTRIES, FALL 1999	60

**NUMBER OF DEGREES & CERTIFICATES AWARDED
1998-99 SCHOOL YEAR**

Associate of Arts	161
Associate in Applied Science	265
Associate of Science	1140
Bachelor of Science	287
Certificate	138
Diploma	5
TOTAL	1,996

Source: Utah Valley State College, Office of Institutional Research and Management Studies

CONTENTS

SUPPORT ORGANIZATIONS

Faculty Senate Presidents	68
Ace/Pace Presidents	69
Utah Valley State College Foundation Board	70
Utah Valley State College Foundation Board Members	71
Utah Valley State College Alumni Association Board of Directors	72
Utah Valley State College Alumni Past President's Club	73
Advisory Committees	74

FACULTY SENATE PRESIDENTS

1998-00	Grant Richards	1986-87	F. Dennis Farnsworth
1997-98	Gaya Carlton	1985-86	Larry B. Marsing
1996-97	Ernie L. Carey	1984-85	Kenneth M. Foster
1995-96	Larry Holt	1983-84	Wesley M. Bitters
1994-95	Hugh Rode	1982-83	J. D. Davidson
1993-94	D. J. Rowley	1981-82	Kenneth M. Foster
1992-93	Douglas Bradley	1980-81	Robert F. Steele
1991-92	Del Shumway	1979-80	Russell C. Black
1990-91	Bonnie G. Henrie	1978-79	Douglas E. Warner
1989-90	J. D. Davidson	1977-78	Stephen L. Adams
1988-89	Orrin A. Nelson		
1987-88	Barbra Ann Hoge		

Source: Utah Valley State College, Faculty Senate Minutes

ACE/PACE PRESIDENTS

1998-99	PACE	Gary Griffin
1997-98	PACE	Jeanette Hall
1996-97	PACE	Robert Rasmussen
1995-96	PACE	Nancy Bartlett
1994-95	PACE	Marilyn Mansfield
1993-94	PACE	Tara Yates
1992-93	PACE	Michael L. Jones
1991-92	PACE	Leah J. Holt
1990-91	PACE	Michael V. Jacobsen
1989-90	PACE	Noel C. Lyman
1988-89	PACE	Thomas R. Rasmussen
1987-88	PACE	Evan A. Frampton
1986-87	ACE	Linda L. Makin
1985-86	ACE	Lucile M. Steele
1984-85	ACE	Duane Jacobs
1983-84	ACE	Barbara Dabbling

Source: Utah Valley State College, Office of Institutional Research and Management Studies

**UTAH VALLEY STATE COLLEGE FOUNDATION BOARD
1999-2000**

Dave Adams
Leland Bird
Dan Campbell, Chair-elect
Craig Carlile
H. Clyde Davis
Cory L. Duckworth, Vice Chair
David D. Halladay
Ronald K. Hawkins
Tom Heal
Thone Heppler, Chairman
Sandy Hirsche
Jeff Kahn
Carla B. Miller, Executive Director
Greg Nelson
Brenda Powell
Bob Rasmussen
Kerry D. Romesburg
Barbara Smith
Carol Walker
John West
Craig Willett
Brent York

Classic Auto Repair, Inc.
C & A Realty
ESNET
Ray Quinney & Nebeker
Davis & Associates
UVSC
Trust Consult
Hawkins, Cloward, Simister
Real Estate
Zion's 1st National Bank

First Security Bank of Utah
UVSC
Calorimetry Sciences Corp.

UVSC
UVSC
KTVX Channel 4

Cottonwood Realty
Willett & Associates
Sentral Distribution Co., Inc.

Source: Utah Valley State College, Institutional Advancement

UTAH VALLEY STATE COLLEGE FOUNDATION MEMBERS 1999-2000

G. William "Bill" Aaron	Merrill Lynch	Renee Nelson	The Daily Herald
Bill J. Anderson	Business Consultant	Norm Nielsen	SCERA Corporation
Merrill Bushnell	Century 21 Bushnell Realty	H. Don Norton	Far West Bank
Louise Clyde	Retired	Davis Palfreyman	Central Bank & Trust
Wilford W. Clyde	Geneva Rock	Florence B. Ragan	Retired
Stanley E. Collins	Smith Barney Shearson	David W. Reeves	Beneficial Life
Ronald J. Dallin	Storehouse Markets	Neal Savage	Savage Brothers
David Gunther	Merrill Lynch	Marlon O. Snow	MST Trucking, Inc.
Ronald Hawkins	Hawkins, Cloward, and Simister	Wilson W. Sorensen	UVSC Pres. Emeritus
J. Marvin Higbee	Jostens Learning	LaVorn G. Sparks	
Doug Horne	Horne's Lodging Properties	Paul Sybrowsky	Dynix, Inc.
Jeffrey Kahn	First Security Bank	Maria Vargas	Hard Disk Cafe
JoAnn B. Losee	Losee Jewelers	Hall Wing	Wing Enterprises
Beck Nelson	Utah Senior Service Home Care	Steve Winn	Mr. Mac's

Source: Utah Valley State College, Institutional
Advancement

**UTAH VALLEY STATE COLLEGE
ALUMNI ASSOCIATION BOARD OF DIRECTORS
1999-00**

Dave Adams, President
Tom Heal
Jeffrey Kahn, Past President
Cameron Martin
Becky Nelson
John Nielsen
Bob Rasmussen
Baron Rohbock
Barbara Smith
Brent E. York

Classic Auto Repair, Inc.
Tom Heal Commercial Real Estate, Inc.
First Security Bank of Utah
Alumni Director
Utah Senior Service Home Care
Heritage Schools
UVSC Director, Student Services
UVSC Student Body President
KTVX Channel 4

Source: Utah Valley State College, Alumni Office

**UTAH VALLEY STATE COLLEGE
ALUMNI PAST PRESIDENT'S CLUB**

Jeffrey Kahn
Bill Brown
Geri Clements
Brent J. DeMille
David D. Halladay
Greg Nelson
Jon W. Startup

First Security Bank
Nicholas & Company Food Services Dist.

Mansell & Associates Realty
Zion's First National Bank
Magnetic Research, Inc.
Startup Candy Company

Source: Utah Valley State College, Alumni Office

ADVISORY COMMITTEES 1999-2000

Accounting

Shane Edwards
Connie Ewing
Robert Gardner
Layne Peterson
Clifford Skousen
Glen Twede

Air Cond & Refrig Tech

Gaylen Atkinson
Richard Carmen
Randy Farnworth
Dean Gunther
Bob Remund

Art/Visual Comm

Jeff Bell
David Cannon
Sharon Grey
Trent Ith
Steve Keele
Mike Lee

Art/Visual Comm (cont)

Mike Whitehead

Apprenticeship - HVAC

Charles Adams
Dennis Baker
Mont Barney
Elvin Clark
Randy Fransworth
Steve Fordham
Brian Gillman
Blaine Gunther
Brent Harvey
Mike Holmes
Carma Johnson
Jerry Lewis
Jeff Lindstrom
Dick Moore
Kelly Porter
Rick Roberts
Frank Smith
Andy Snider

Apprenticeship - HVAC (cont)

Mark Spencer
Brad Tanner
Brad Thalman

Apprenticeship - Plumbing

Doug Carter
Earl Carter
Bob Gradhead
Burke Davis
Dave Freeman
Mont Hales
Joe Lindord
Dan Martin
Del Merkley
Michael Puriri
Brent Taylor
Ken Tuttle

ADVISORY COMMITTEES

1999-2000

(continued)

Automotive Technology

Phil Crockett
Jeff Hollingworth
Rich Lamb
Steve Livingston
Norm Miller
Glen Mitchell
Tom Moore
Pat Patterson
Jeff Pugh
Bri Raven
Lee Rosenhan
Brad Storms
Fred Ward

Aviation Science

Michael Burnham
Robert Burns
Rich Crandall
Doug Jensen
Gordon McIntosh

Aviation Science (cont)

Greg Meiners
Jim Pyles
Steve Smith
William Stocks

Bldg Const/Const Mgmt

Russ Berry
John Dester
Bill Fairbanks

Building Inspection Tech

Robert Hansen
Roger Evans
Paul Hayward
Chuck Hugo
Frank Robinette
Greg Sauter
Alicia Timm
Jerry Wray

Bus Comm & Office Tech

Joyce Bell
Marilyn Dean
Diane Heap
Carolyn Kuehne
Mikki O'Connor
Carol Rhone
Skip Standifird
Toni Sullivan
Vickie Walker

ADVISORY COMMITTEES

1999-2000

(continued)

Business Management

Randy Armstrong
Scott Baird
Don Black
Ladd Black
Anne Coleman
Sandy Coleman
Charlie Coombs
Ken Fakler
Norm Finlinson
T.J. James
Neal Larson
Gary McKinnon
Brad Mortensen
Todd Mortensen
Jon Startup
Steve Winn

Cabinet & Archit Woodwork

Jon Fondell
Dennis Hardcastler

Cabinet & Archit Woodwork (cont)

Michael Marcum

Child Ed/Family Studies

Becky Carlisle
Wayne Crabb
RoniLynn Jenkins
Anita Spainhower
Toni Tomlinson
Ginger Wooley
Cheryl Wright

Collision Repair Tech

Dave Adams
Clay Atkinson
Lee Bellows
Pat Griffiths
Dale Peterson
Steve Whitlock

Computer Science & Info

Jim Baird
Ted Crowther
Meg Fisher
Tim Petru
Gordon Stokes
Dan Masterson

Criminal Justice

David Bateman
Robert Kelshaw
Wayne Dance
David Paul

Culinary Arts

Steve Berzansky
Connie Bullock
Marshal Fuguhti
Don Highdel
Maralyn Thorne

ADVISORY COMMITTEES

1999-2000

(continued)

Dental Hygiene

George M. Bailey
Gordon Christensen
Sherman Cloward
Alene Harrison
Alexander Lansen
Karen Preston
Marti Santizo
Gary Weist
Debby Schiffman

Diesel Mechanics

Ron Dallinga
Jamie Evans
Dick Fazzio
Albert Harmer
Don Jones
Terry Pollack
Brent Wright

Drafting Tech - Mechanical

Dan Olson
Mike Thompson

Drafting Tech - Electrical

Keith Hegerhorst

Draft Tech - Civil

Carl Cook
Clyde Naylor
Al York

Draft Tech - Structural

Terry L. Beighley
David Patten

Drafting - Architectural

Kevin Madson
Paul Magleby
Mark Stevenson

Elect Auto Tech

Bernard Cope
Gary Crawford
Kyle Walters
Rulon Wells

Elect & Comp Tech

Phil Adams
Tom Bennett
Mel Crouch
John Ellsworth
Bill Gillman
John Greenhaigh
Mark Hoyt
Gary Maag
Richard Ohran
David Owens
Ralph Merrill

ADVISORY COMMITTEES

1999-2000

(continued)

Environmental Tech

David Gunn
John Hays
Ron Kidd
Dean Miner
Neil Taylor
Rand Webb

Facilities Mgmt

Lynn Brough
Phil Lott
Mark Stanley
Don Underwood
Mark Woods

Finance & Banking

Rick Anderson
Mike Crossley
Dennis Dunn
Sharon Hammer
Thone Heppler

Finance & Banking (cont)

Richard Hillam
Nanette Lassen
Wendy Holloway
Jim Stead
Brian Thompson

Fire Science

Jim Bacon
Merlin Baker
Don Berry
D. Blair Camp
Gary Cornell
Kris Garcia
Coy Porter
Dianna Shumway
Lynn A. Steffensen
Van Summers

Honors Program

Janae Brown Haas
Larry Harper
Steve Revelli
Mark Spencer
Joe Wixom

Hospitality Management

Ann Gambrino
Dennis Hall
Katherine Halter
Loretta King
Susan Landgraf
Britt Mathwich
Brian McDonough
Randy Millet
Rus Olsen
Glen Overton
David Petersen
Dave Webster

ADVISORY COMMITTEES

1999-2000

(continued)

International Business

Greg Crandall
Edmond Dosch
Barbara Evert
Malan Jackson
Randy Lindstrom
David Pearson
Kent Pinney
Lee Radebaugh
Stan Reese
Barry Thompson

Legal Studies

Tena Boswell
W. Brent Bullock
Randy Kester
Sandra Kirkham
Kathy Kurtz
Eric Mausser
JoAnn Nielson
Robert Schumacher
Ryan Thomas

Legal Studies (cont)

Sue Warnick

Lineman Technology

Calvin Christensen
Dean Cordner
Leon Fredrickson
Rich Olsen
Lyle Powell
Brent Thomas

Machine Tool

Nick Bigney
Jack Brady
Jack Diamond
Rich Garrick
Bruce Jacobsen
Ken Jensen
Danny Olsen

Nursing

Donna Cartwright
Lee Duke
Linda Johnson
Jo Nielsen
Lane Pedersen
Nan Nicponski

Technology Management

Scott Baird
Joe Diamond
Blaine Gunther
Robert Hansen
Val Hawkes
Don Jones
Jim Redford

ADVISORY COMMITTEES

1999-2000

(continued)

Teacher Education

Dennis Allison

Garth Bird

Melanie Harris

Vance Hillman

Mike Jacobsen

Gail Johnson

Mitchell Pratt

Kim Roper

Tim Rowley

Anita Spainhower

Lee Stoor

Kristen Webb

Welding Technology

Steve Anderton

Chris Dulos

Sam Freeman

Max Knight

Mike Leikum

Dennis Lloyd

Welding Technology (cont)

Dave Miller

Ron Noys

Robert Patch

George Patuatua

Skip Peterson

Bill Rowbuck

Ron Voran

Doniell Vorheis

CONTENTS

FINANCE

History of Education and General Operating Budgets and Appropriations	81
History of State Appropriations Per FTE	82
Education and General Operating Funds Use Expenditure Category 1999-2000 (graph)	83
Education and General Operating Funds Expenditure Purpose 1999-2000 (graph)	84
Education and General Revenue Sources 1999-2000 (graph)	85
History of Education and General Operating Budget and Appropriation (graph)	86
Fuel and Power Expenditures (graph)	87
Scholarship Activity Report 1998-1999	88
Tuition Waiver Activity Report 1998-1999	90
Financial Aid Activity Report 1998-99	92
Grants and Contracts Summary 1998-99	93

HISTORY OF EDUCATION AND GENERAL OPERATING BUDGETS AND STATE APPROPRIATIONS

<u>Year</u>	<u>Total Budget</u>	<u>State General/ Income Tax Fund</u>	<u>Percentage</u>
1999-00	\$53,270,000	\$32,823,600	61.62%
1998-99	\$48,065,900	\$29,503,600	61.38%
1997-98	\$43,568,200	\$26,758,700	61.42%
1996-97	\$40,060,000	\$24,380,200	60.86%
1995-96	\$37,960,000	\$22,138,100	58.32%
1994-95	\$33,800,000	\$19,454,300	57.56%
1993-94	\$29,663,000	\$17,364,100	58.54%
1992-93	\$26,416,500	\$16,121,200	61.03%
1991-92	\$23,538,800	\$14,994,600	63.70%
1990-91	\$21,319,500	\$13,939,400	65.38%
1989-90	\$18,856,800	\$12,370,900	65.60%
1988-89	\$17,268,400	\$11,449,800	66.30%
1987-88	\$16,796,426	\$11,162,400	66.46%
1986-87	\$15,967,752	\$10,716,500	67.11%
1985-86	\$15,400,281	\$10,723,475	69.63%
1984-85	\$13,854,100	\$9,963,500	71.92%
1983-84	\$12,021,700	\$7,997,700	66.53%
1982-83	\$11,377,500	\$7,671,400	67.43%
1981-82	\$10,281,200	\$7,054,100	68.61%
1980-81	\$8,656,400	\$6,206,500	71.70%
1979-80	\$7,462,800	\$5,346,500	71.64%

Source: Utah Valley State College, Budget Office

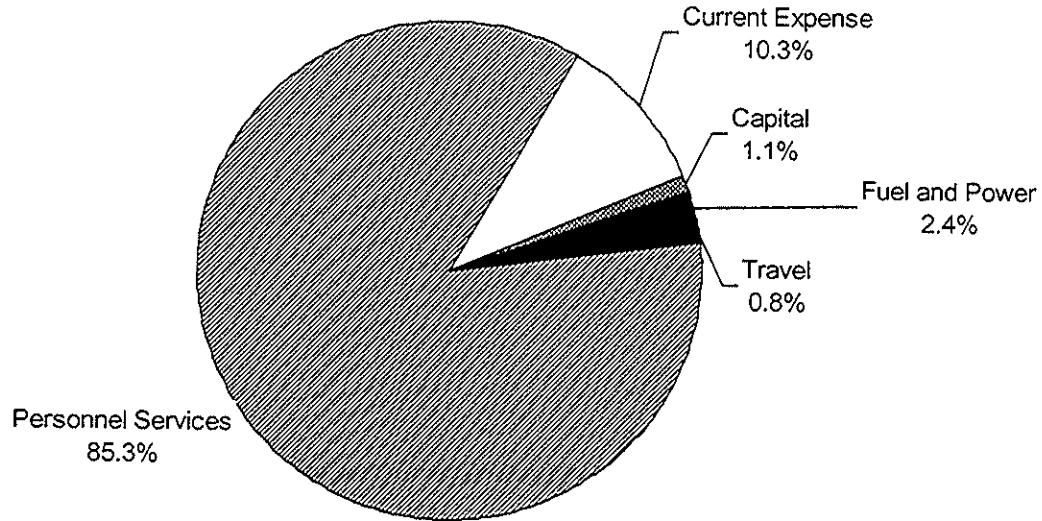
HISTORY OF STATE TAX FUNDS PER FTE*

<u>Year</u>	<u>Base State Tax Funds</u>	<u>Annualized FTE</u>	<u>Appropriation Per FTE</u>
1998-99	\$29,503,600	11,540	\$2,557
1997-98	\$26,758,700	10,056	\$2,661
1996-97	\$24,380,200	9,721	\$2,508
1995-96	\$22,138,100	8,988	\$2,463
1994-95	\$19,454,300	8,437	\$2,306
1993-94	\$17,364,100	8,021	\$2,165
1992-93	\$16,121,200	7,472	\$2,158
1991-92	\$14,994,600	6,732	\$2,227
1990-91	\$13,939,400	5,787	\$2,409
1989-90	\$12,370,900	5,854	\$2,113
1988-89	\$11,449,800	5,329	\$2,149
1987-88	\$11,162,400	5,302	\$2,105
1986-87	\$10,716,500	5,206	\$2,058
1985-86	\$10,723,475	4,899	\$2,189
1984-85	\$9,963,500	4,947	\$2,014
1983-84	\$7,997,700	5,272	\$1,517
1982-83	\$7,671,400	5,035	\$1,524
1981-82	\$7,054,100	4,349	\$1,622
1980-81	\$6,206,500	3,840	\$1,616
1979-80	\$5,346,500	3,250	\$1,645

*FTE = Full-time equivalent

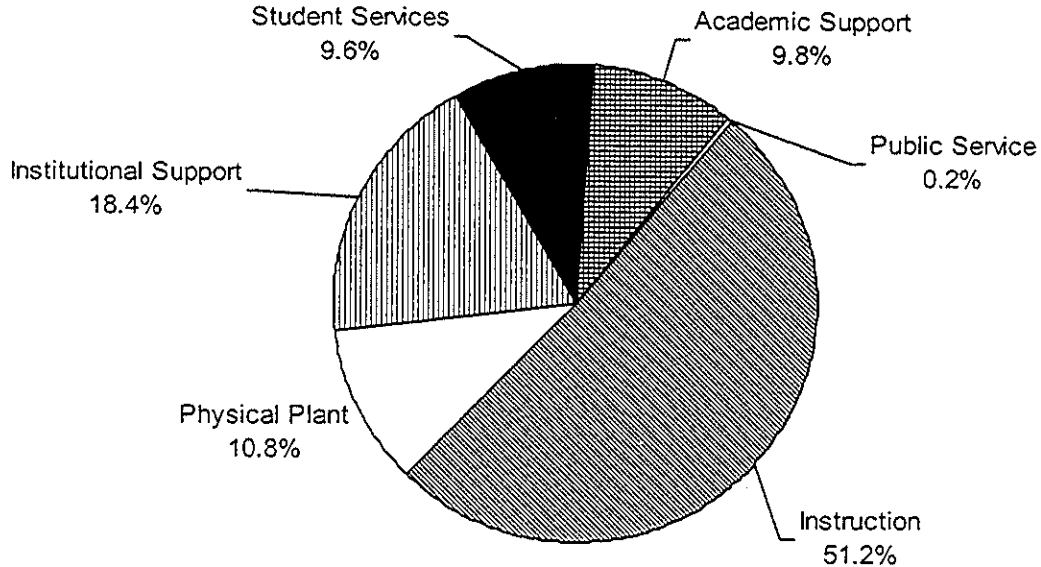
Source: Utah Valley State College, Budget Office

EDUCATION & GENERAL OPERATING FUNDS USE EXPENDITURE CATEGORY 1999-2000



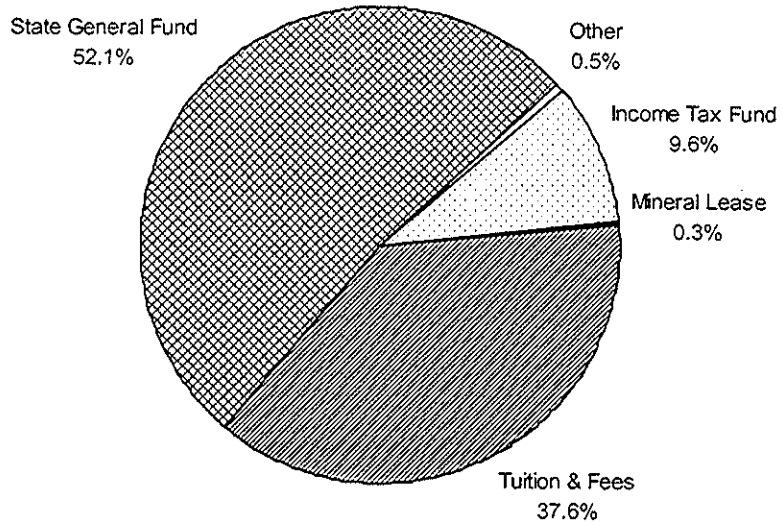
Source: Utah Valley State College, Budget Office

EDUCATION & GENERAL OPERATING FUNDS EXPENDITURE PURPOSE 1999-2000



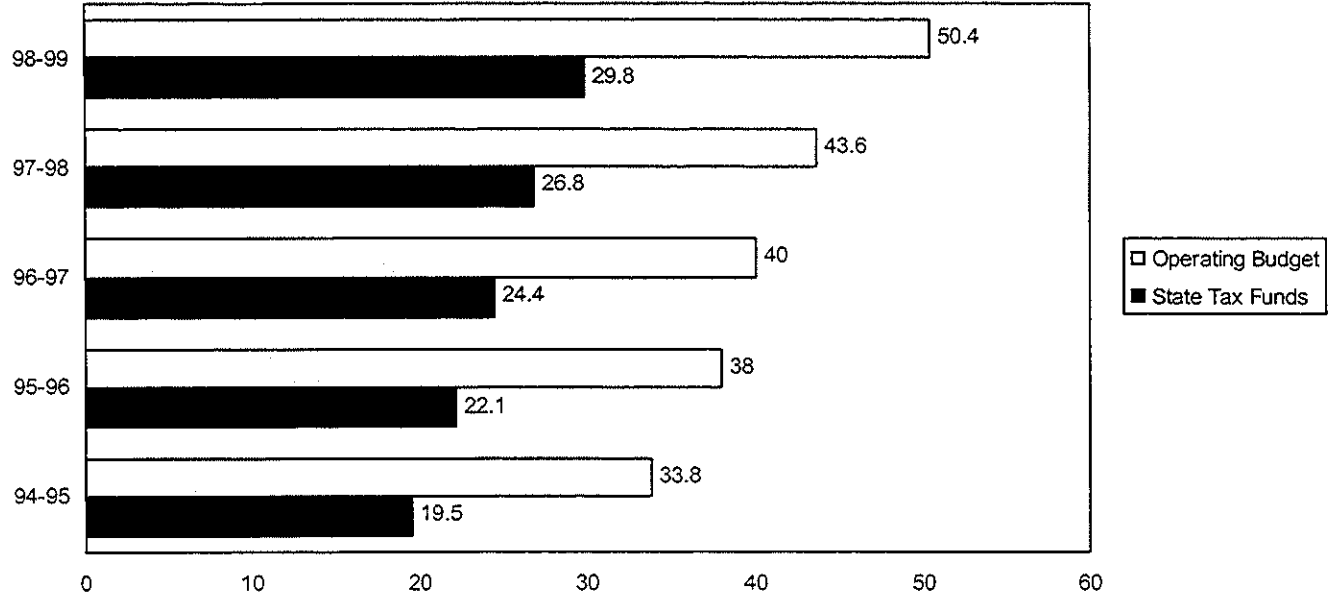
Source: Utah Valley State College, Budget Office

EDUCATION & GENERAL REVENUE SOURCES 1999-2000



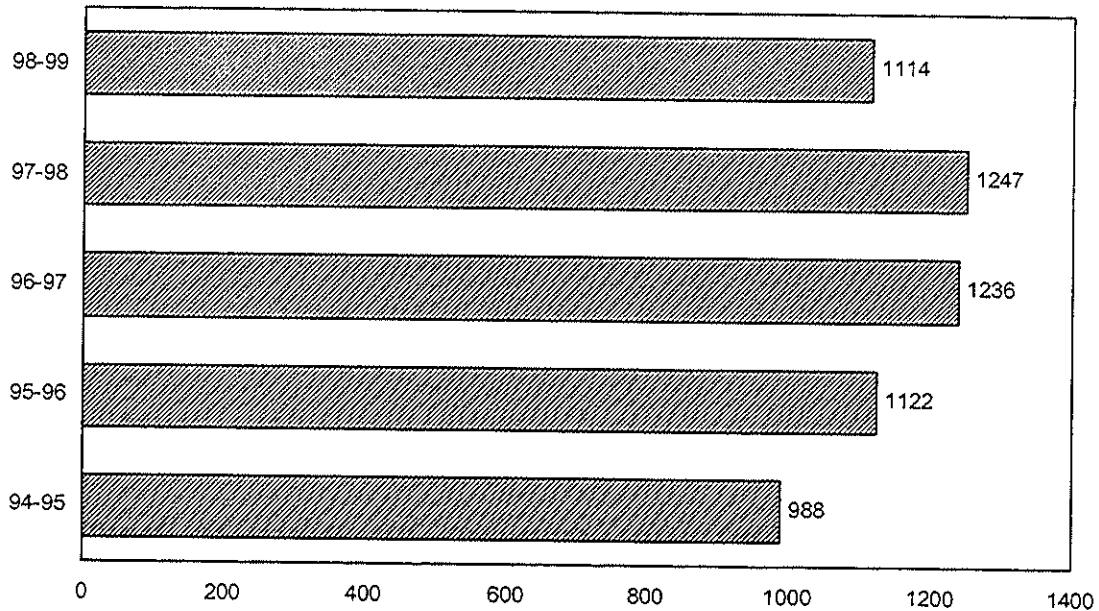
Source: Utah Valley State College, Budget Office

HISTORY OF EDUCATION AND GENERAL OPERATING BUDGET AND STATE TAX FUNDS



Source: Utah Valley State College, Budget Office

FUEL AND POWER EXPENDITURES (INCLUDES ENERGY PROJECTS APPROVED BY THE BOARD OF REGENTS)



Source: Utah Valley State College, Budget Office

SCHOLARSHIP ACTIVITY REPORT

1998-99

<u>Name</u>	<u>Number</u>	<u>Amount</u>
1 st Security Foundation	3	\$ 2,500
Allen Taylor	1	500
Allyson Walker Ollivier	2	1,042
Athletic	67	41,811
B R Minority	8	3,200
Bamberger Student with Disabilities	18	10,801
Beth Tolbert	1	572
Bill & Margaret Pope	21	18,634
Blaine/Lousie Clyde	5	1,350
Browning Trust	6	4,160
Business Faculty/Staff	2	1,500
Carrol Reid Memorial	1	1,574
Central Bank & Trust	1	1,000
Crouch Auto Mechanic	1	500
Don/Renee Butler	1	1,800
Electrical Wholesale	2	2,500
F ar West Bank	1	1,000
Fawn Walker	22	18,516
Florence B. Ragan (General)	5	3,498
Florence Ragan Theater	1	414
General	37	14,040
General Endowment	1	136
Geneva Steel Employees	2	1,500
Greer Nursing	18	10,679
Gunther Nursing	6	4,272
Gunther Trades	24	22,213
Henrietta Herwig	12	8,977
Home Builders	15	4,700
Irma Burg (Peo)	2	1,105
Joanne B. Losee	1	1,272

SCHOLARSHIP ACTIVITY REPORT

1998-99 (continued)

<u>Name</u>	<u>Number</u>	<u>Amount</u>
Joseph Ollivier Business School	1	1,000
Key Bank	1	500
Larsen Foundation	1	650
Marvin & Ethelynn Higbee	3	900
Marlon Snow	1	636
Miscellaneous	1	787
Mountain Fuel - A Questar Co.	1	636
Nadine Gillmore	5	5,400
New Opportunities	1	1,000
Pacific Corp	9	2,922
Pearson Trust	18	10,176
Perry Foundation	12	25,855
PGA	1	500
Premier Administration	1	500
Presidential	25	29,291
Rashband	2	3,000
Rodeo	10	8,928
School of Business	1	500
Springville Rotary	11	12,848
Student Alumni	2	938
Student Government	5	1,952
Symmetry Auto	2	1,272
TTI	2	636
Utah County Realtors	1	800
Utah Valley Business Expo	4	2,000
Utah Valley Management	2	1,000
Victor & Fae Cartwright	2	786
TOTAL	412	\$301,178

Source: Utah Valley State College, Financial Aid Office and Institutional Advancement

**TUITION WAIVER ACTIVITY REPORT
1998-99**

<u>Name</u>	<u>Number</u>	<u>Amount</u>
Accessibility Services Half-Tuition	6	\$ 2,544
Athletic Non-Resident	18	16,218
Athletic Non-Resident Full	4	13,842
Athletic	108	105,606
Business Half-Tuition	73	35,151
Center for Personal & Career Dev. Half-Tuition	21	8,268
College Relations Half-Tuition	24	11,130
Dean's Scholarship	149	165,360
Education & Bus. Partn. Half-Tuition	2	954
Education Talent Search UB Half-Tuition	23	9,392
First-Time Student	10	8,904
Financial Aid Discretionary	21	11,909
Financial Aid Impecunious	23	10,812
Financial Aid Non-Resident	1	636
GED Tuition	5	3,816
Governor Vocational	20	16,536
Hum., Arts & Social Sci. Half-Tuition	63	32,754
Learning Enrichment Center	3	3,816
Mac Cultural Diversity Full-tuition	30	27,984
Mac Cultural Diversity Half-tuition	47	21,306

TUITION WAIVER ACTIVITY REPORT

1998-99

(continued)

<u>Name</u>	<u>Number</u>	<u>Amount</u>
Multi-Media & Communications Half-Tuition	10	4,134
OCSS Half-Tuition	22	12,402
Performing Arts	129	87,971
President & Vice President Discretionary	18	10,884
President Scholarship	25	28,620
Public Relations	26	8,957
Schools Discretionary	406	292,349
Science & Health Half-Tuition	59	30,466
Sterling Scholar Half-Tuition	28	12,720
Student Activities	65	42,049
Student Activities Non-resident	14	10,176
Student Programs Half-tuition	42	19,080
Trades & Tech Half-Tuition	144	66,848
Trio-Student Support Half-Tuition	26	7,950
UVSC Outstanding Sterling Scholars	21	19,080
Vice-Presidential Academic	38	45,792
Wellness Center Half-Tuition	8	4,390
TOTAL	1,732	\$1,210,806

Source: Utah Valley State College, Office of Financial Aid

FINANCIAL AID ACTIVITY REPORT 1998-1999

<u>GRANTS</u>	<u>NUMBER OF STUDENTS</u>	<u>AMOUNT</u>
Federal Pell	3,517	\$5,461,780
Federal SEOG	699	278,879
State Supplement	457	97,870
UCOPE	153	63,320
 <u>LOANS</u>		
Federal Perkins	143	\$297,667
PLUS	23	137,994
Stafford	3,835	4,312,008
Short -Term	3,522	2,631,424
Unsubsidized Stafford	664	644,110
 <u>EMPLOYMENT</u>		
Federal Work-Study	118	\$156,613
UCOPE Work-Study	42	61,705
 TOTAL	 13,173	 \$14,143,370

Source: Utah Valley State College, Office of Financial Aid

GRANTS AND CONTRACTS SUMMARY 1998-99

<u>General</u>	<u>Amount</u>
Library Horizon	2,759
UMEP	124,022
WSU-UMEP	46,986
Dep. Pub. Safety	5,000
Substance Abuse	4,500
Small Bus. Dev. Cntr.	93,591
Y2K upgrades	401,728
Fire Marshall	1,830,092
Wildland Fire Trng.	85,000
Child Care R&R	240,310
BLM Lt. Monitoring	820
Student S.S.	188,021
NEH-Ethics	8,775
USIA Mongolian U.	4,656
BLM Genetic Study	2,021
BLM Genetic	5,016
FIPSI Disseminating Reform	81,598
Talent Search	240,253
NIST	1,498,672
Upward Bound	255,360
Upward Bound Child Nut.	4,135
BLM Poppy	1,542
Title II D-R & Demo	16,641
NIST Res. Net.	1,658,741
NIST Environmental	56,433
Student Support Tutoring	14,687
FEMA - Terrorism	40,000
NSEP	<u>66,876</u>
TOTAL	\$6,978,235

GRANTS AND CONTRACTS SUMMARY 1998-99
(continued)

<u>Foundation/Corporation</u>	<u>Amount</u>
Utah/Russia Days	2,000
Center for Personal and CD	9,335
CRA - Anti Terrorism	1,600
Utah Humanities Council	6,796
Inst Student Assistance	2,197
Bilders Associates	190,000
Browning Trust	45,298
Nursing	889
Colo Plateau	20,000
Care Center	4,000
Aqua Training	2,360
Water Quality	1,987
Gender Awareness	2,500
Int. Student.	<u>9,358</u>
TOTAL	\$298,321

GRANTS AND CONTRACTS SUMMARY 1998-99
(continued)

<u>Flow Through</u>	<u>Amount</u>
Soar	3,175
ATST	292,178
ATC USOE	327,159
Mtland JTPA	5,000
APPR Distr.	21,500
CHAMP-Sch. Distr.	154,000
School to Career	337,622
Gender Equity	24,829
Perkins Formula	702,417
Perkins Gender Equity	79,842
Perkins Adult School/Career	19,610
Perkins-Workforce S.	146,662
Tech. Prep.	117,270
TOTAL	\$2,607,909

Source: Utah Valley State College, Development Office

CONTENTS

FACILITIES

Physical Facilities, Building Square Feet	96
Physical Facilities, Buildings in Progress	97
Physical Facilities, Priority Requests	98

PHYSICAL FACILITIES AS OF JULY 1, 1999

<u>Building</u>	<u>Gross Square Feet</u>
Administration Building	81,645
Automotive Building	96,878
Business Building	71,520
Central Plant & Auxiliary Buildings	16,174
Continuing Education	5,500
Driver's Education	2,140
Environmental Technology Lab	6,715
Faculty Annex	7,977
Foundation Building	35,564
Institutional Residence	3,442
Learning Resource Center	91,577
Mountainland Applied Technology Center	58,194
Pioneer House	1,243
Physical Education /Special Events Building	225,410
Planning Center & Auxiliary Buildings	19,737
Provo Airport/Hanger	66,174
Public Safety	4,001
Science Building	78,180
SCUP	3,349
Student Center	<u>92,023</u>
Total Square Feet	1,160,643

Source: Utah Valley State College, Planning Facilities Office

**PHYSICAL FACILITIES
BUILDINGS IN PROGRESS 1999**

Buildings in Progress

Information Sciences Building
Student Center Expansion

Source: Utah Valley State College, Planning Facilities Office

PHYSICAL FACILITIES

<u>Priority Requests for 2001</u>	<u>Gross Square Feet</u>
Classroom Additions	10,000
Classroom Building	100,000
Humanities & Arts Building	80,000
Total Net Square Feet*	190,000

* SQUARE FOOTAGE FIGURES ARE APPROXIMATE

Source: Utah Valley State College, Planning Facilities Office

INDEX/GLOSSARY

ACE/PACE Presidents	69
Advisory Committees	74
Age Distribution of Contract Faculty by Degrees and Gender	29
Athletics, Final Records and Conference Finishes	22
Board of Trustees	27
Board of Trustees Chairs	28
Citizenship of Foreign Students	64
College Presidents	11
College Calendar, 1999 Fall Term	7
College Calendar, 2000 Spring Term	8
College Calendar, 2000 Summer Term	9
College Name Changes	11
County Resident/Non-Resident Headcount, Fall Semesters 1995-1999	44
Education and General Operating Funds, Expenditure Category 1998-1999 (graph)	83
Education and General Operating Funds, Expenditure Purpose 1998-1999 (graph)	84
Education and General Revenue Sources 1998-1999 (graph)	85
Employee Awards	21
Employment in Utah County by Type	26
Enrollment Comparison--Annualized FTE Students (graph)	40
Enrollment Comparison of Utah Universities and Colleges, Fall 1998	53
Enrollment from Utah Counties, Fall 1999	45

INDEX/GLOSSARY (continued)

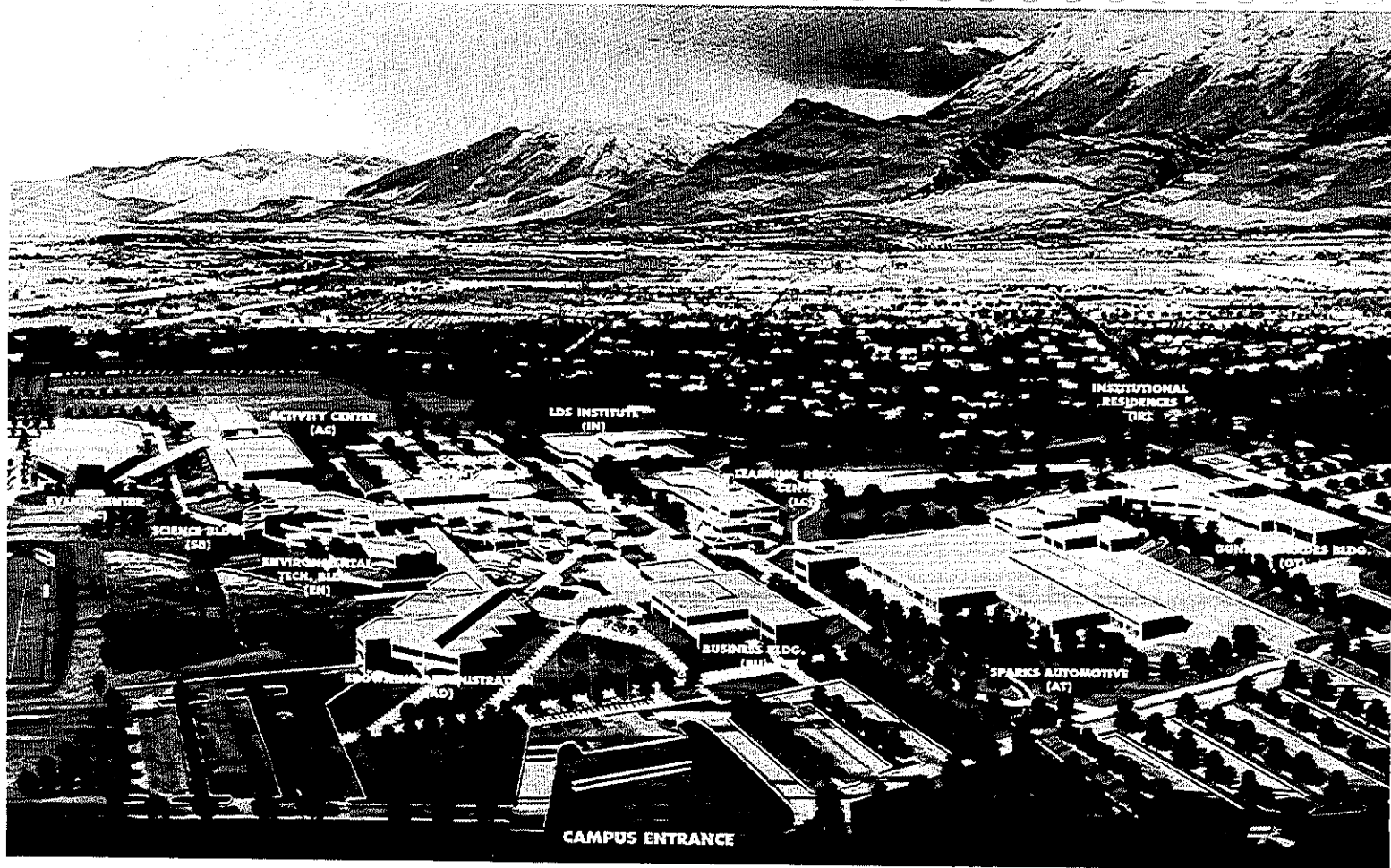
Enrollment History, Fall 1995-1999 (graph)	41
Enrollment History, Spring Semesters 1995-1999 (graph)	42
Enrollment History, Summer Terms 1995-1999 (graph)	43
Ethnic Distribution of Contract Faculty by Degree and Gender	30
Faculty Senate Presidents	68
Fall Enrollment Projections (graph)	54
Financial Aid Activity Report	92
Fuel and Power Expenditures (graph)	87
Full-time Equivalent, Fall Semester 1999	39
Geographic Origin of Students, United States	60
Grants and Contracts Summary 1998-99	93
Headcount by Area of Study, Fall Semester 1999 (graph)	52
Headcount by Class Standing, Fall Semesters 1995-1999 (graph)	59
Headcount Distribution by Age, Fall Semesters 1995-1999	56
Headcount Distribution by Ethnic Group, Fall Semesters 1995-1999	57
Headcount Enrollment, Fall Semester 1999	38
History of Education and General Operating Budget and State Appropriation	81
History of Education and General Operating Budget and State Appropriation (graph)	86
History of State Appropriation per FTE	82
History of Utah Valley State College	2
Honorary Degree Recipients	23

INDEX/GLOSSARY (continued)

Institutional Mission	1
Main Feeder High Schools for UVSC, Fall Semester 1999	47
Male/Female Headcount, Fall Semesters 1995-1999 (graph)	58
Mean Age of Students, Fall Semesters 1995-1999 (graph)	55
Number of Degrees and Certificates Awarded, 1995-1999	67
Part-time/Full-time Headcount, Fall Semesters 1995-1999	50
Part-time/Full-time Headcount, Fall Semesters 1995-1999 (graph)	51
Physical Facilities, Buildings in Progress	97
Physical Facilities, Buildings Square Feet	96
Physical Facilities, Priority Requests	98
Rank by Department	34
Resident/Non-Resident Headcount (graph)	48
Scholarship Activity Report 1998-1999	88
Student Body Presidents	17
Teacher of the Year	20
Total Number of Employees	37
Tuition and Student Fees	16
Tuition Waiver Activity Report 1998-1999	90
Universities Represented by Doctorates of Contract Faculty and Administrators	31
Utah Commissioners of Higher Education	13
Utah State Board of Regents	12

INDEX/GLOSSARY (continued)

Utah State Board of Regents Chairs	13
Utah State Board for Vocational Education Chairs	14
Utah System of Higher Education	15
Utah System of Higher Education, Headcount by Utah County Residency (graph)	49
Utah Valley Population	25
Utah Valley State College Alumni Association Board of Directors	72
Utah Valley State College Alumni Past President's Club	73
Utah Valley State College Foundation Board	70
Utah Valley State College Foundation Board Members	71

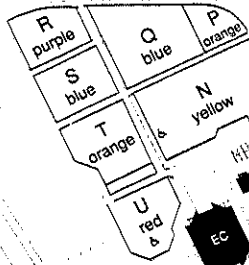




1999-2000 PARKING MAP

LCUP COLLEGE POLICE

ALPHE LUTZ & LEARNING CENTER



SCHOOL OF CONTINUING EDUCATION

INSTITUTIONAL HERBERGENCE

green



- SO SCIENCE BLDG.
- SC STUDENT CENTER
- LC LEARNING RESOURCE CENTER
- AD ADMINISTRATION
- EN ENVIRONMENTAL TECH
- SU BUSINESS BLDG.
- CP CENTRAL PLANT
- AT AUTOMOTIVE TRADES BLDG.
- GT GUNTHER TRADES BLDG.
- PE PHYSICAL EDUCATION
- EC EVENTS CENTER
- FB FOUNDATION BLDG.
- MT MOUNTAINLAND APPLIED TECHNOLOGY CENTER



EXIT 272

TO PROVO AIRPORT CAMPUS
3101 W. ANNE JENSE PKWY
EXIT #204

FACILITY ANNEX



- BICYCLE RACK
- UTA BUS STOP
- ADA PARKING
- MOTORCYCLE STALL

- RED: PAY LOT
- GREEN: EMPLOYEE
- YELLOW: \$60
- ORANGE: \$40
- BLUE: \$20
- PURPLE: FREE LOT (MUST HAVE PERMIT)

NOTE: ALL INDIVIDUALS WHO PURCHASE A HIGHER COST PERMIT WILL BE ABLE TO PARK IN ANY LOT THAT HAS BEEN ASSESSED AT A LOWER RATE.
ANY CHANGES, ERRORS, OR OMISSIONS ON MAPS PROVIDED BY THE COLLEGE SHALL NOT RELIEVE THE VEHICLE OPERATOR OF RESPONSIBILITY FOR PARKING IN A LEGAL PARKING SPACE.

PARKING SERVICES (801) 222-8188
MONDAY, THURSDAY, FRIDAY 7 - 5 PM
TUESDAY, WEDNESDAY 7 - 6 PM

