



DAVID ECCLES SCHOOL OF BUSINESS

Utah County Demographic Insights

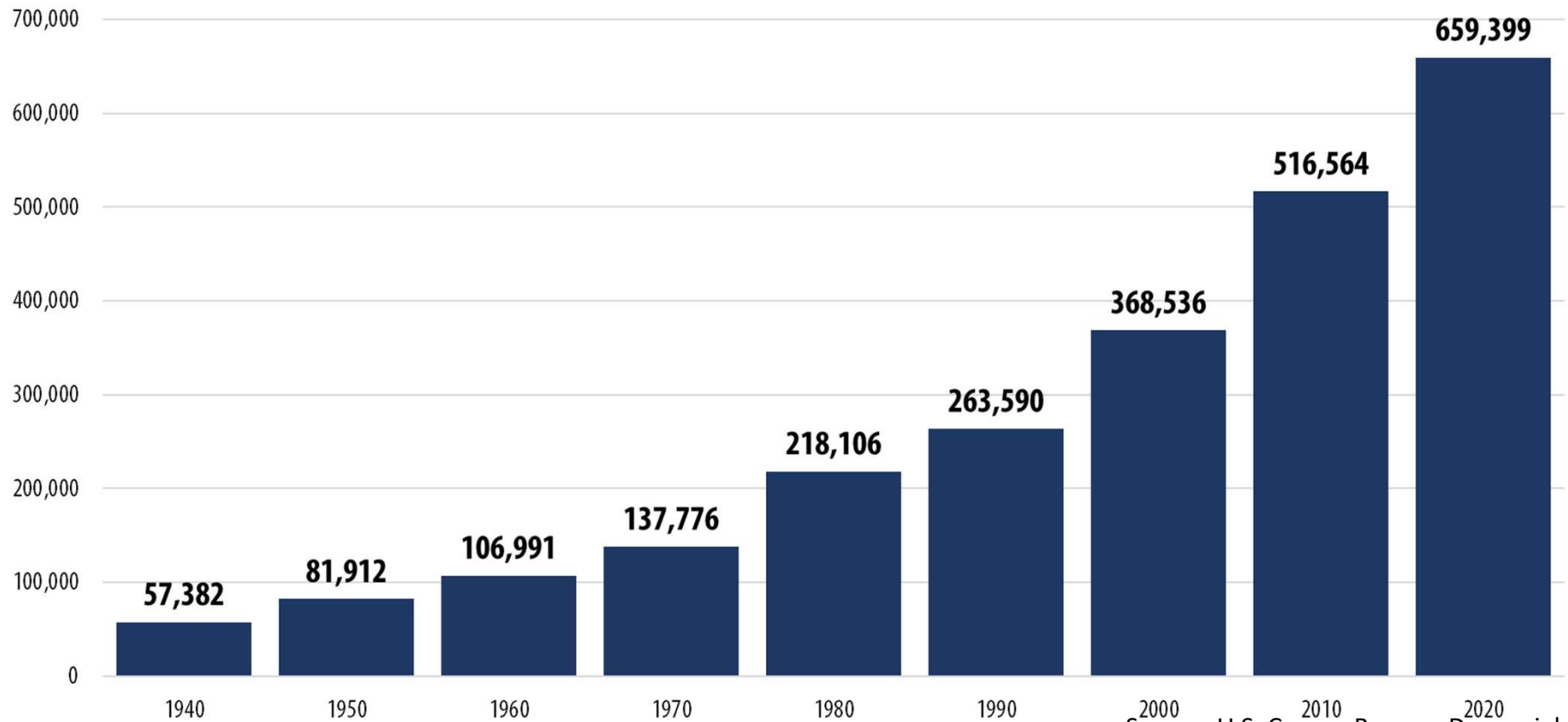
November 7, 2022

INFORMED DECISIONS™

Kem C. Gardner Policy Institute | 411 East South Temple Street, Salt Lake City, Utah 84111 | 801-585-5618 | gardner.utah.edu

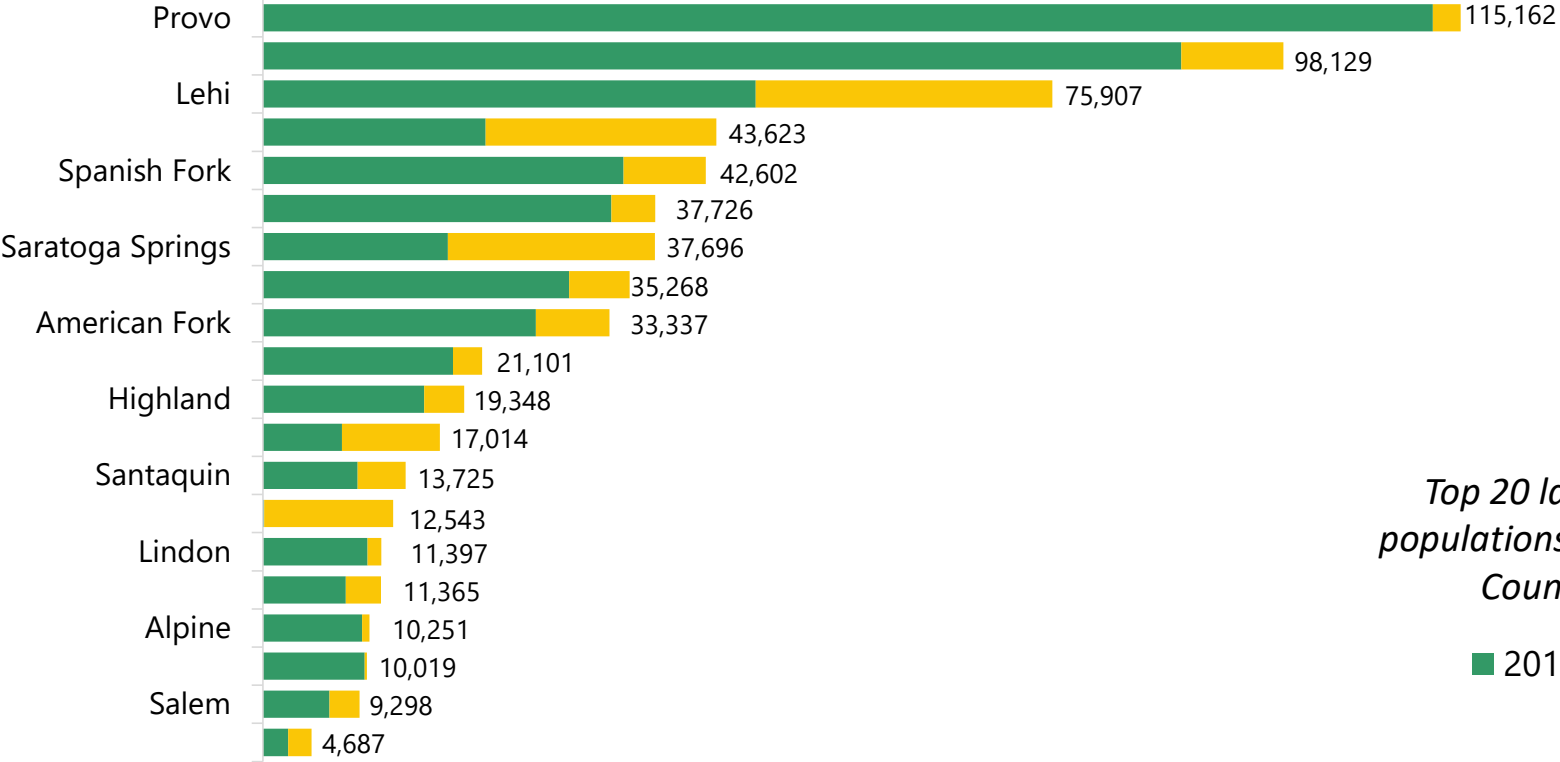
Growth of Population in Utah County

1940-2020



Source: U.S. Census Bureau, Decennial Census

Communities in Utah County grew between 2010 and 2020, with Lehi, Eagle Mountain, Saratoga Springs, and Vineyard increasing the most.



Top 20 largest populations in Utah County

■ 2010

Source: U.S. Census Bureau, Redistricting Data

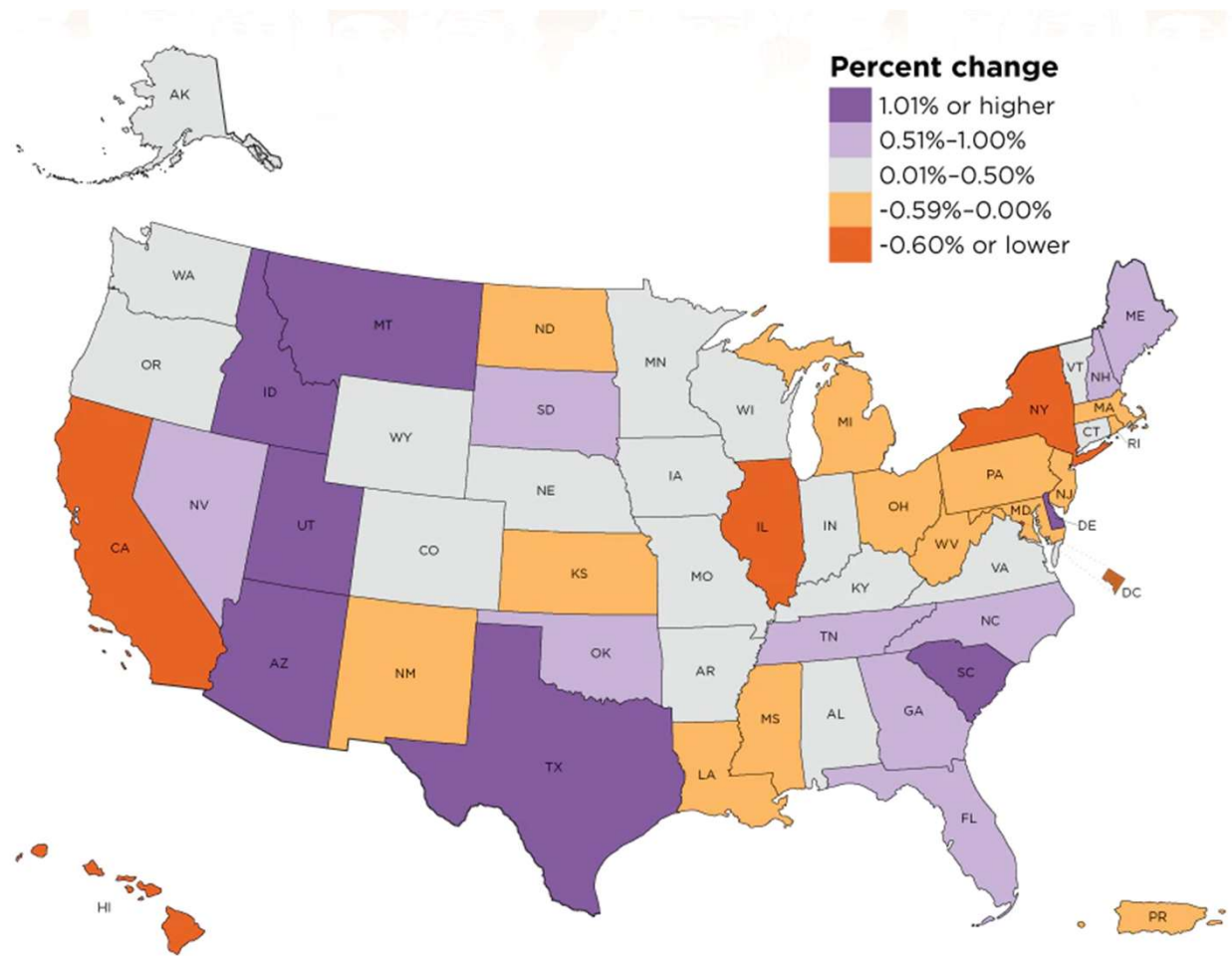
Slide 3

HPO

I couldn't fit all 31 of the cities/towns so these are just the top 20 in population. 3 of the smallest decreased in population, all others grew.

Heidi Prior, 2022-10-20T20:42:15.804

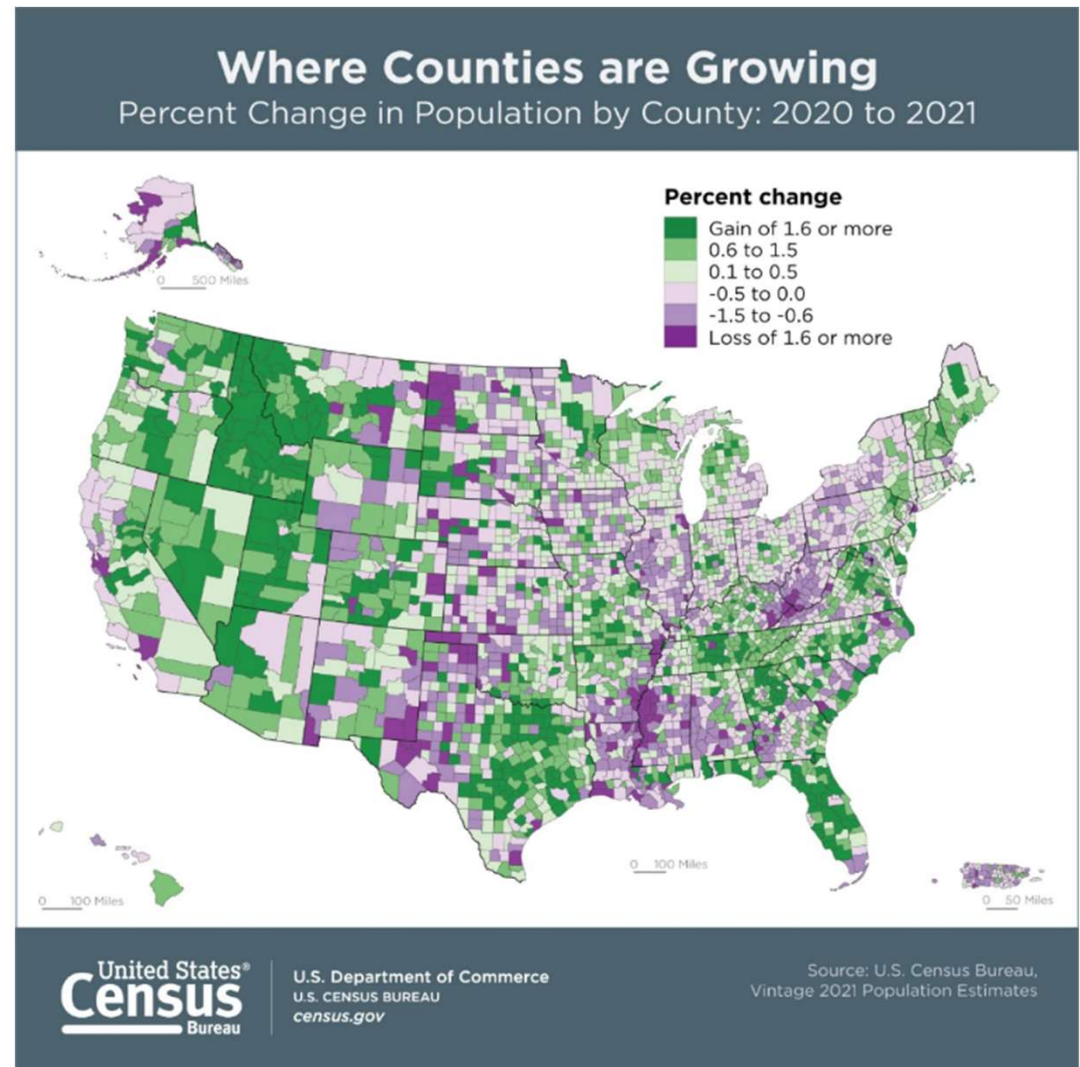
Between 2020 and 2021, "COVID-19, declining birth rates and international migration resulted in historically small population gains"



Source: U.S. Census Bureau

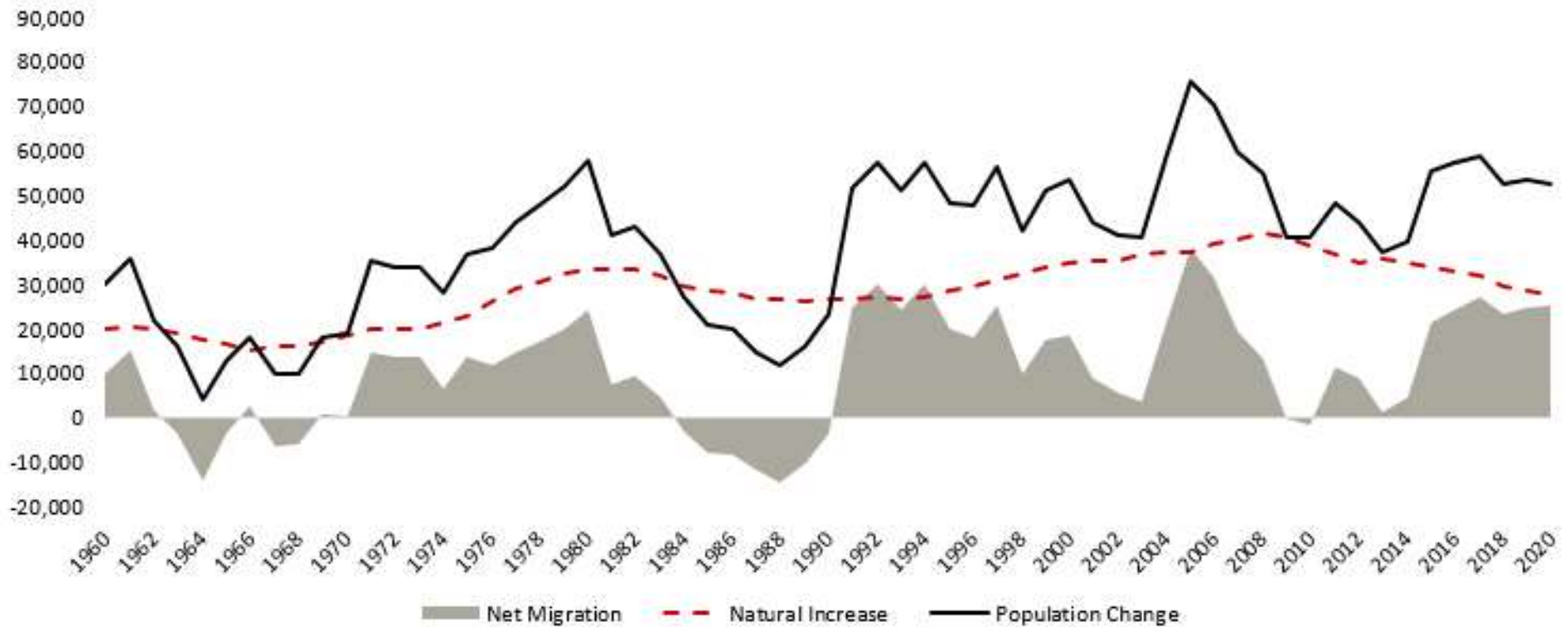
County-level population change varied between 2020 and 2021, but Utah County added the 10th most new residents in the nation with nearly 22,000.

Utah County Population, 2021: 684,986



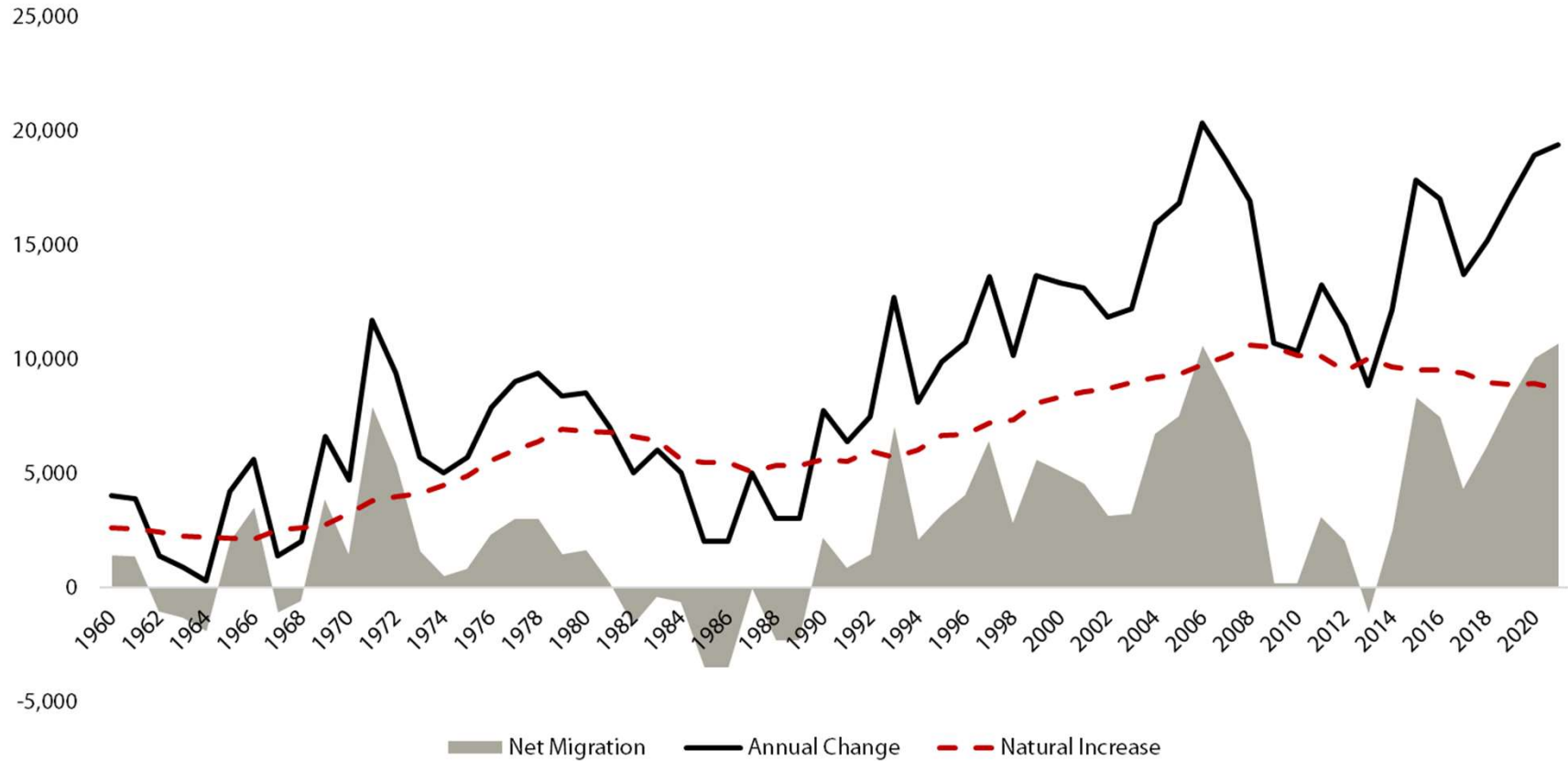
Migration has become a more consistent component of change

Utah Population Change with Components of Change, 1960-2020



Source: Utah Population Estimates Committee and Utah Population Committee

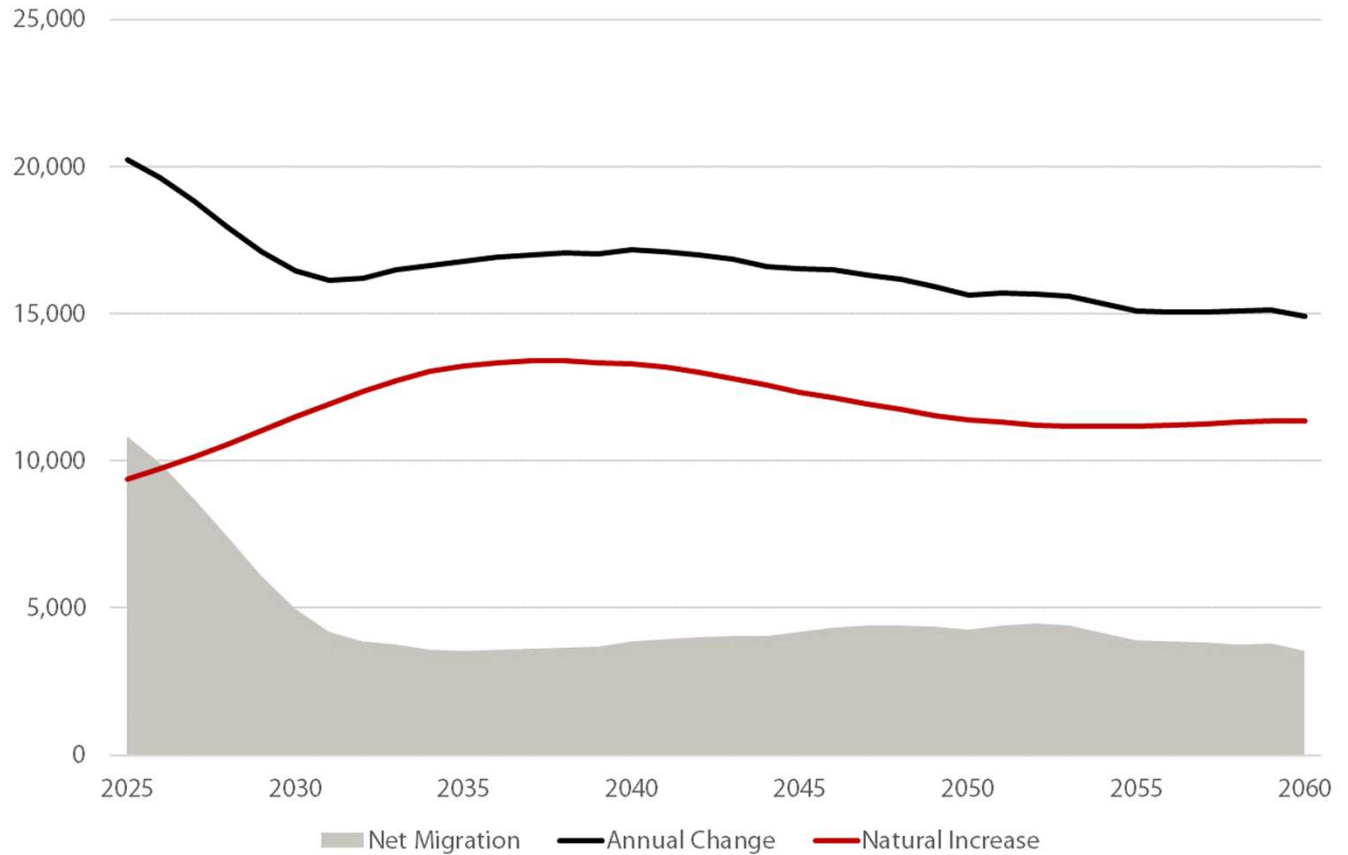
Utah County Population Change with Components of Change, 1960-2020



Source: Utah Population Estimates Committee and Utah Population Committee

Natural increase is projected to be the primary driver of growth in Utah County.

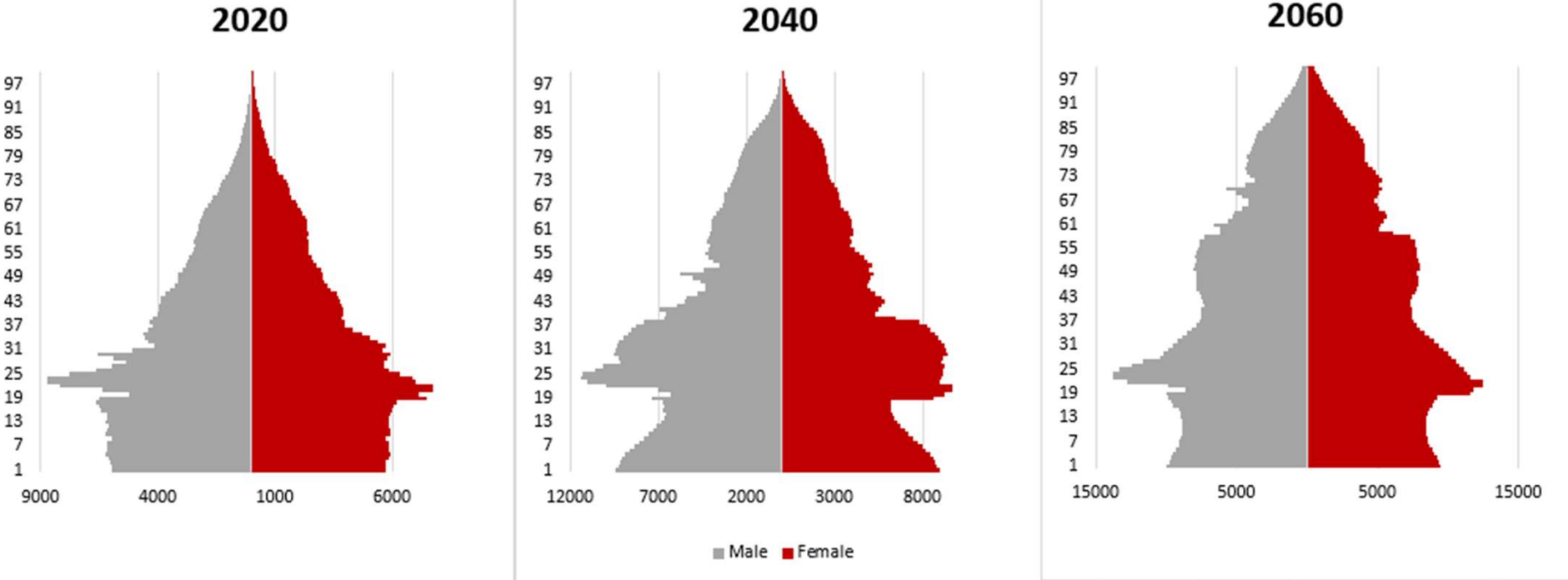
Projected Population Growth with Components of Change in Utah County, 2025-2060



Source: Kem C. Gardner Policy Institute, 2020-2060 Projections

Changes to age structure differ by county

Utah County Population Pyramids, 2020, 2040, 2060

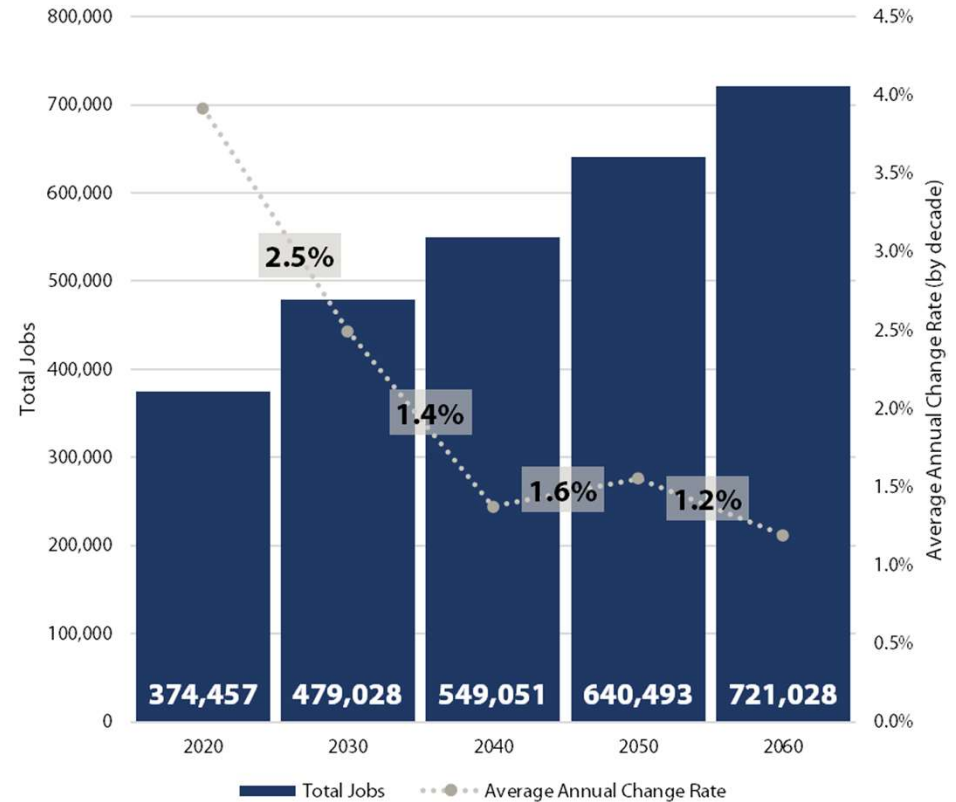


Source: Kem C. Gardner Policy Institute, 2020-2060 Projections

In Utah County, projected increases result in:

Employment increasing from nearly **375,000 in 2020** to over **720,000 in 2060**.

Construction, health care and social assistance, and professional, scientific and technical services drive **44% of this growth**

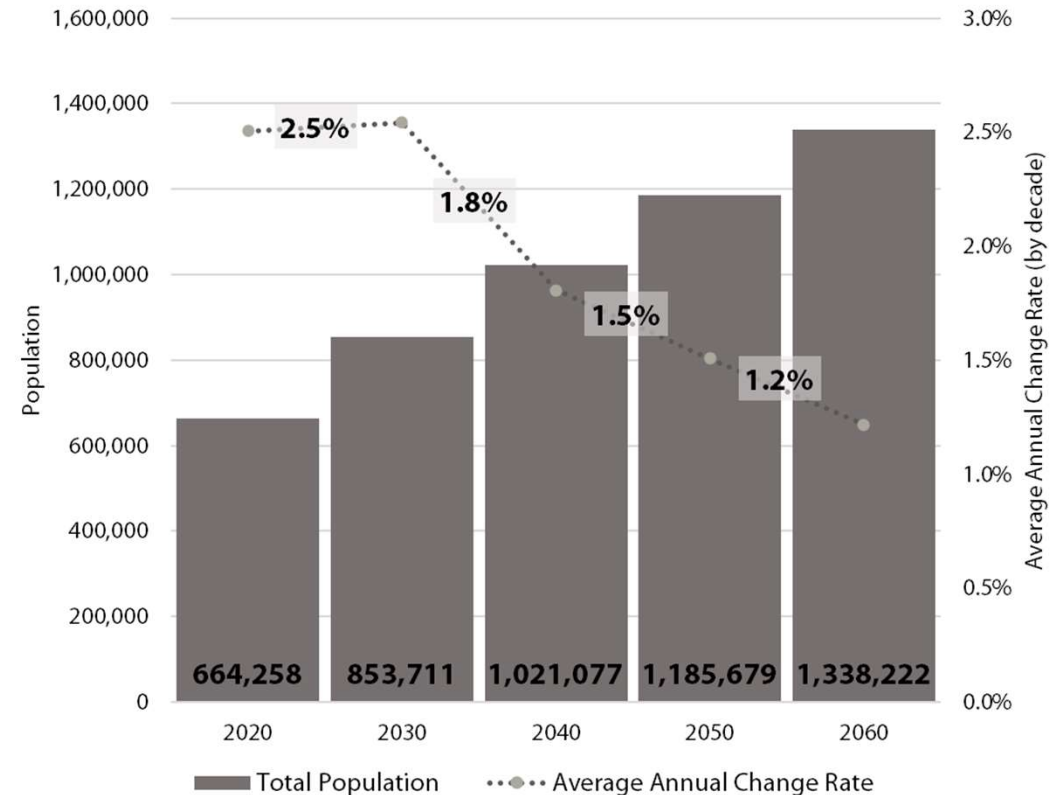


Source: Kem C. Gardner Policy Institute, 2020-2060 Projections

In Utah County, projected increases result in:

An additional 217,000 residents or a 60% increase over 40 years – the most of any county in the state.

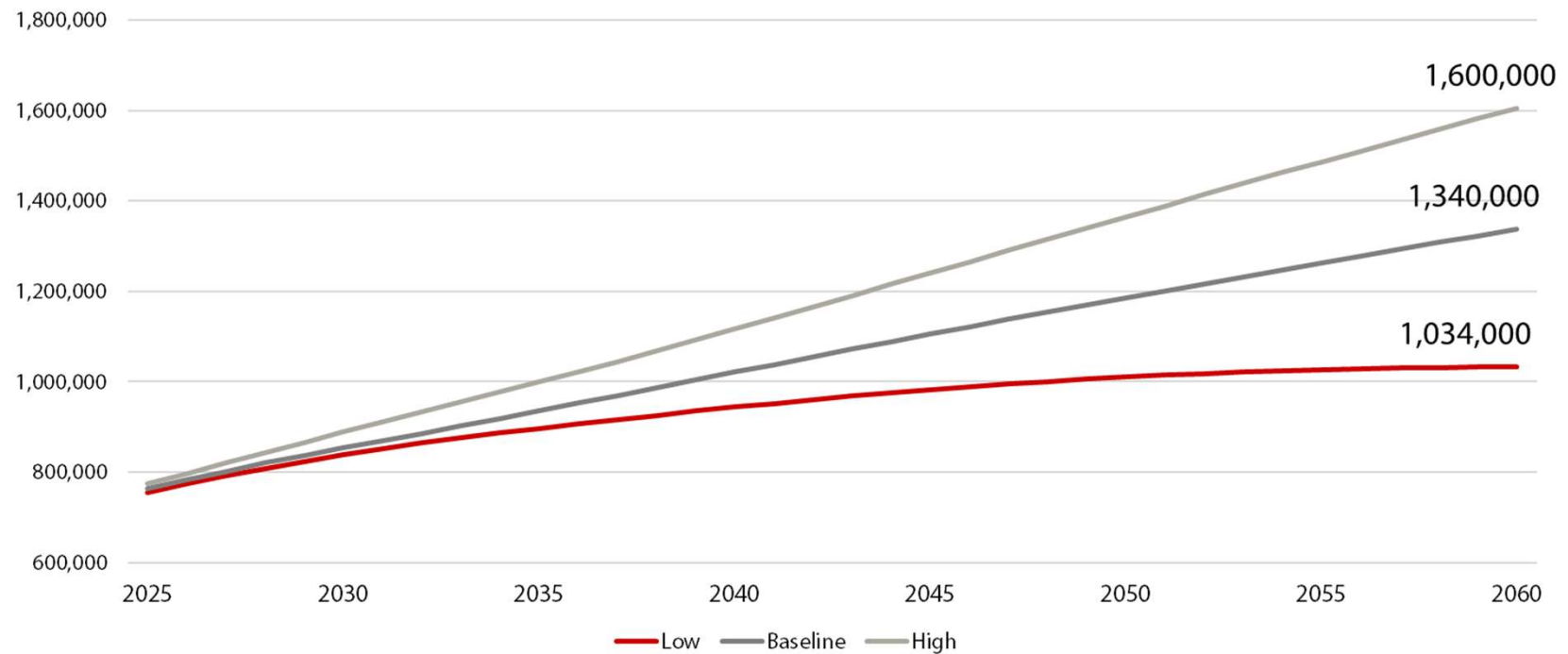
Remaining the **2nd largest county** in Utah.



Source: Kem C. Gardner Policy Institute, 2020-2060 Projections

If assumptions change, so does the projected future.

Low, Baseline, and High Population Scenarios for Utah County



Source: Kem C. Gardner Policy Institute, 2020-2060 Projection Scenarios