

Platform

# Make Every Message Count With Cadence

Higher ed's premier engagement platform - intuitively designed to create and encourage meaningful conversations across student, alumni, and donor lifecycles.

Book a Demo

SMS Texting

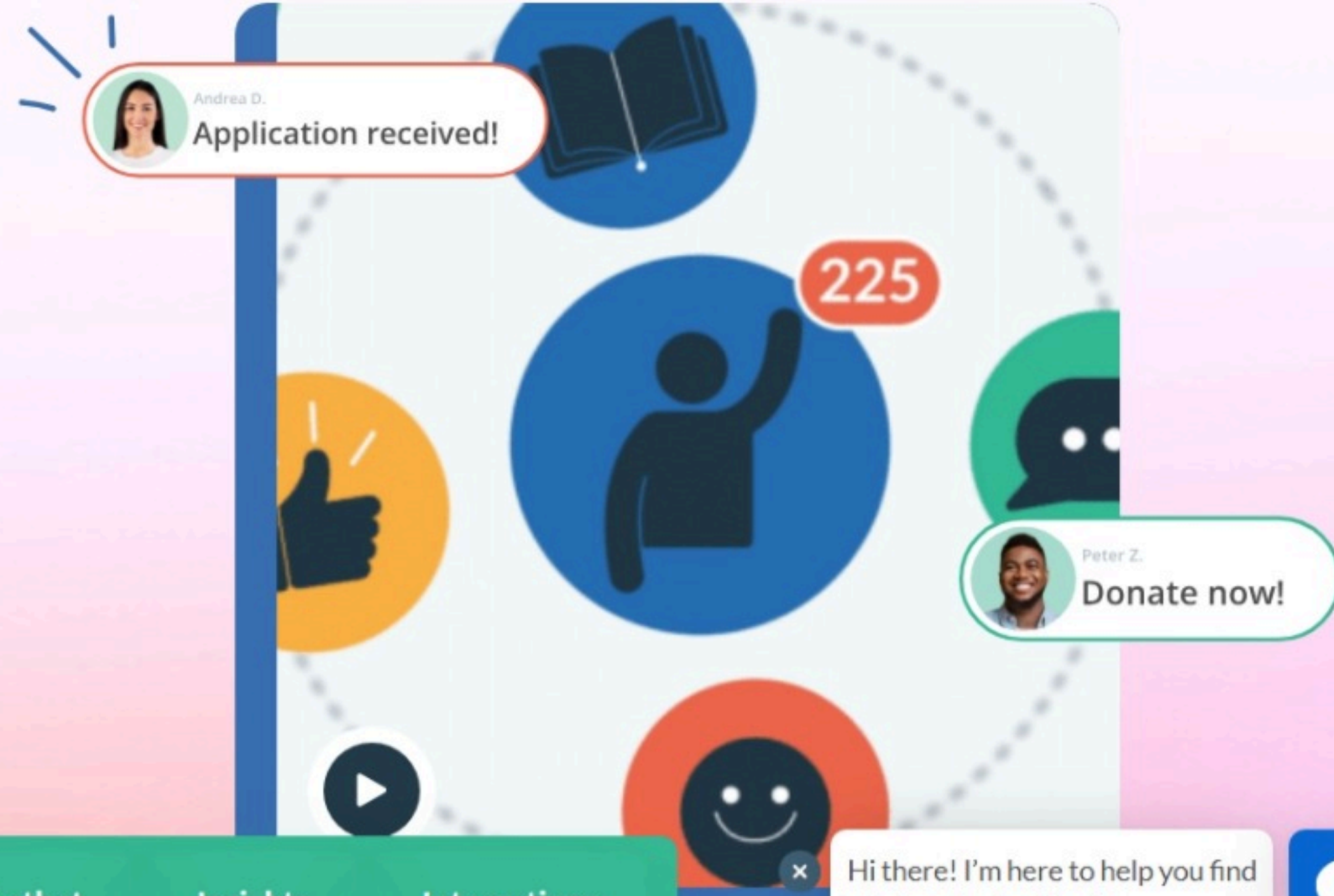
Live Chat

AI Chatbot

Insights

Integrations

Hi there! I'm here to help you find what you're looking for.



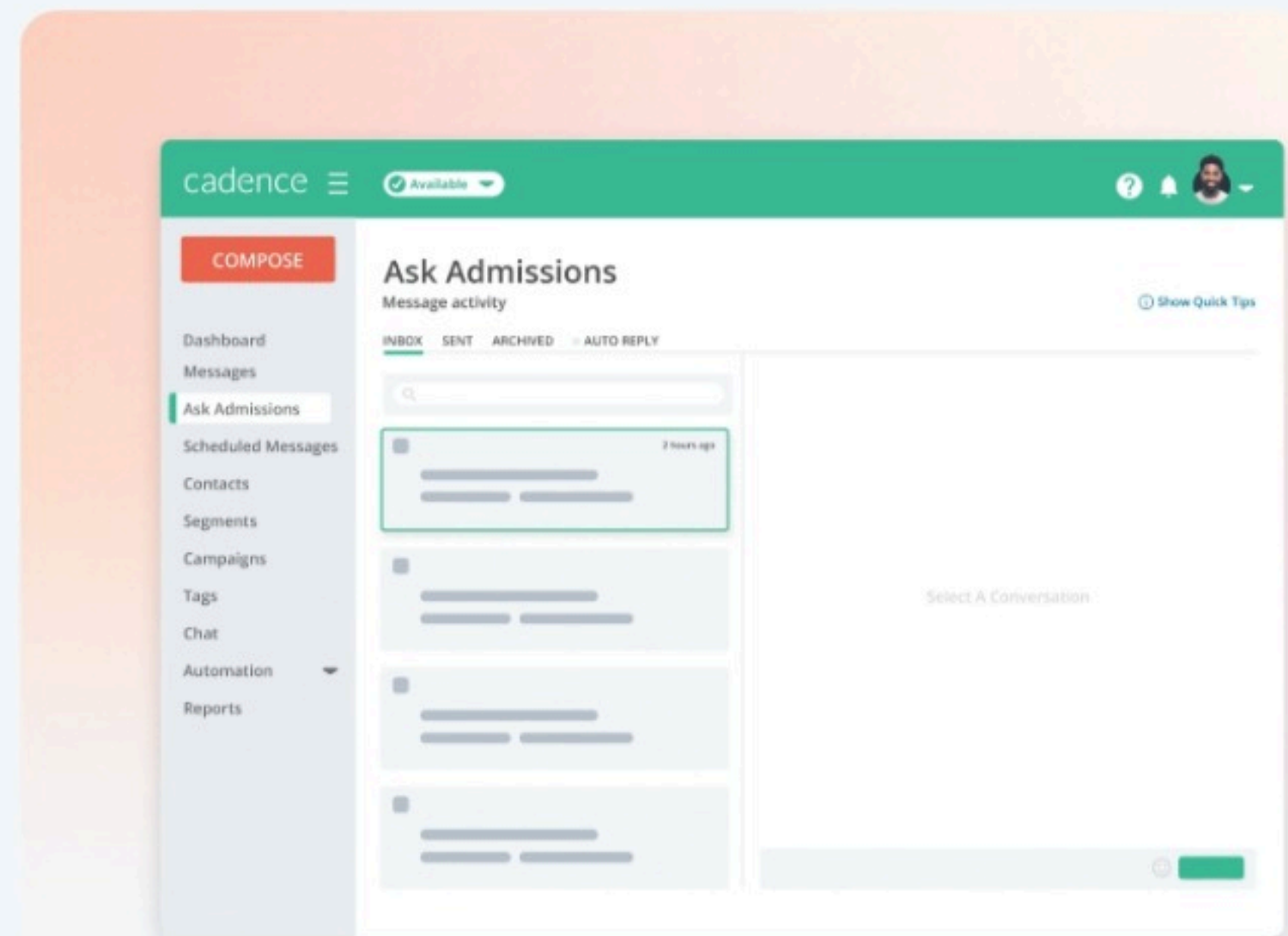
SMS Texting

## Targeted messages that actually get read

Easy-to-use two-way messaging with preset templates, contact segmentation, powerful automation, smart messages, and campaign tracking.

- Thoughtfully nurture applicants toward enrollment
- Meet students where they are to boost retention efforts
- Personalize donor outreach to exceed fundraising goals

Learn More



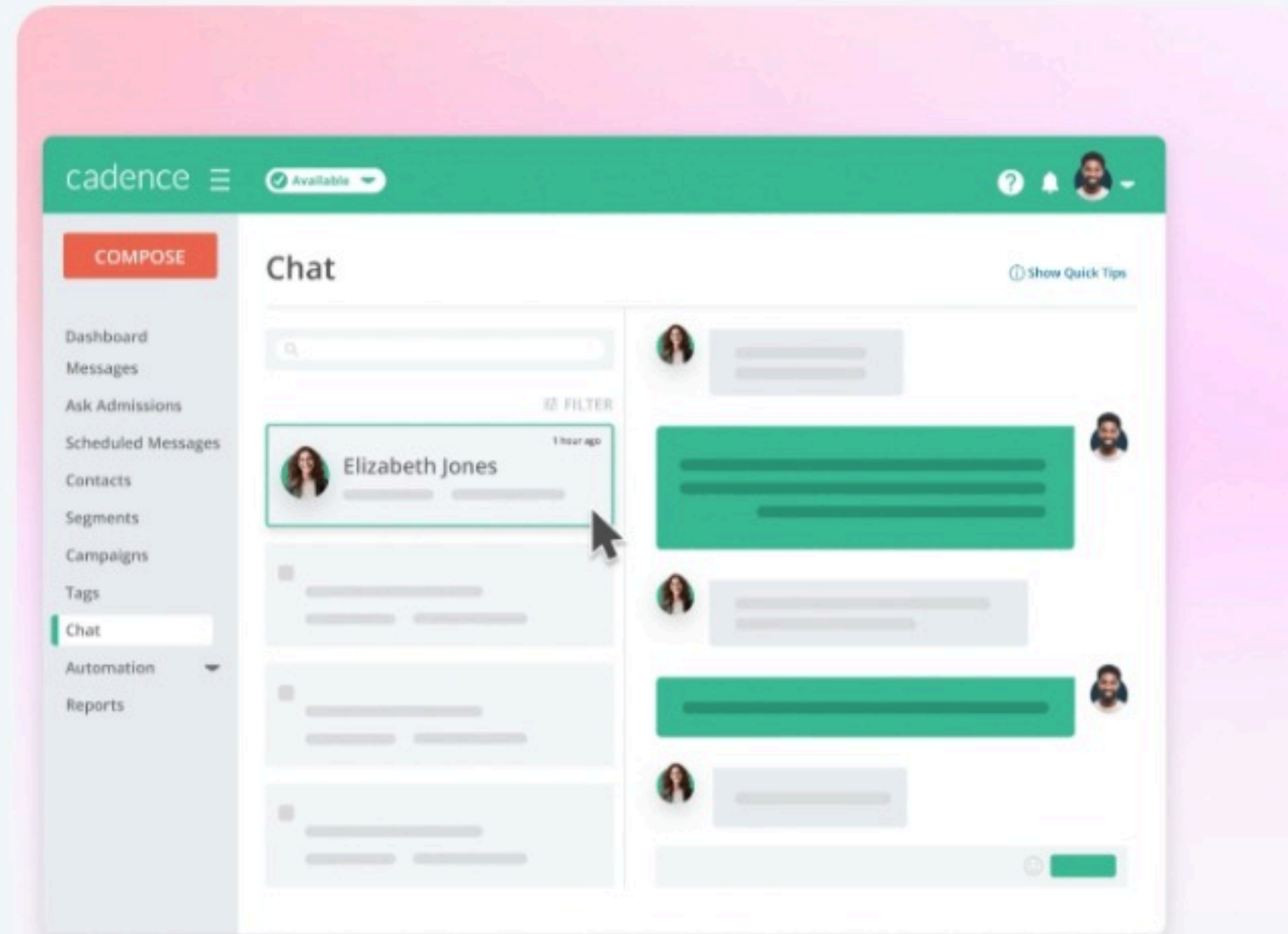
Live Chat

## Fast, personalized campus-wide support

Authentic web-based conversations elevated with automated contact capture, interactive info boards, conversation history, department routing, and personalized branding.

- Assist with urgent questions while adding a personal touch
- Let visitors message you at all times and reply when convenient
- Easily follow up via SMS texting via our chat-to-text functionality

Learn More



2021, and most."

**"Cadence reduced our workflow. The students reaching out were more serious... online and graduate staff were excited from the get-go."**

Conner Ellinghuysen  
Director of Admissions, Buena Vista University

Read More

"This is a... We have... there's a l...

Natalie Wagoner  
Director of Admissions, P...

Read More

AI Chatbot

## Perfect balance of AI and personal connection

GPT model-trained chatbot powered by all your institution-based data points to ensure accuracy when providing instant answers and guidance.

- Save time for high-value tasks with reduced call and email volume
- Seamlessly collect prospect contact info to achieve departmental goals
- Expertise in enrollment, success, finance, alumni, and fundraising

Learn More

Insights

## Turn your conversations into action

Natural language processing AI that accelerates your understanding of campus-wide conversations through the analysis of topics, themes, and nuanced emotions.

- Uncover what wording impacted admits, yield, retention, and fundraising
- Proactively understand student sentiment to take actions that reduce melt
- Learn what is working for your competitors and where prospecting overlaps

Learn More



## Integrate with your go-to apps

Learn More